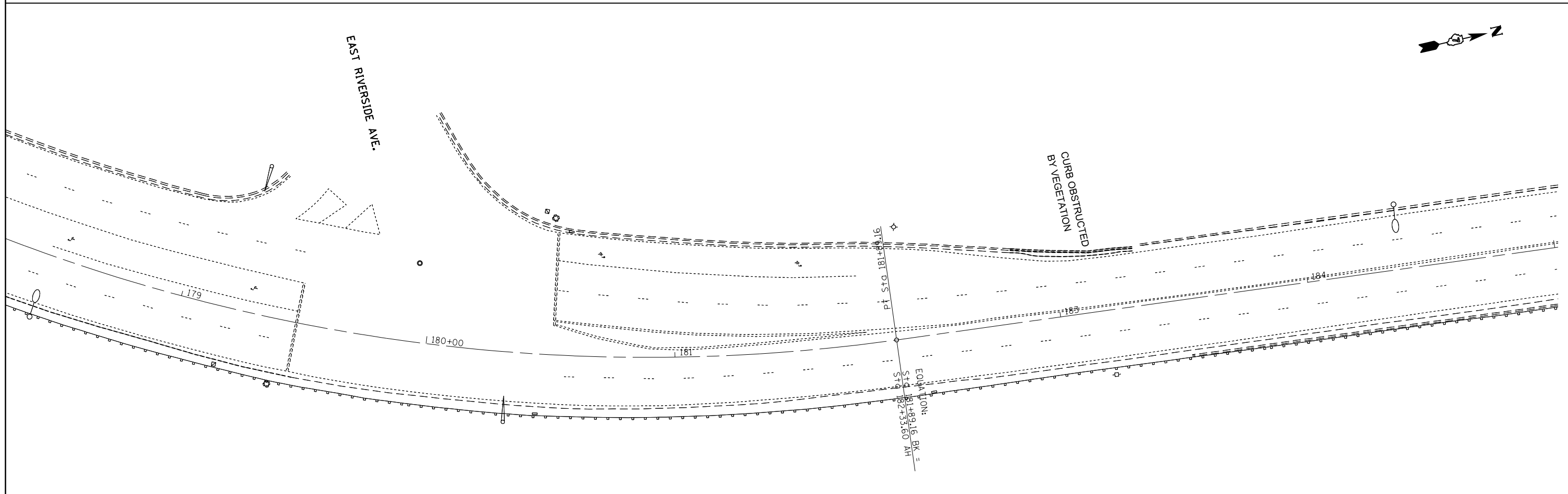


EXIST. CURVE 4
 PI STA. = 177+85.32
 Δ = 82° 10' 11" (LT)
 D = 7° 58' 37"
 R = 718.27'
 T = 626.26'
 L = 1,030.10'
 E = 234.68'
 e = -----
 T.R. = -----
 S.E. RUN = -----
 P.C. STA. = 171+59.06
 P.T. STA. = 181+89.16



FILE NAME =	USER NAME = steffenmk	DESIGNED -	REVISED -
ei:\pw\work\p\idot\steffenmk\d0187107\074475-SHT-plan.dgn	4475-SHT-plan.dgn	DRAWN -	REVISED -
	PLOT SCALE = 40.0000' / in.	CHECKED -	REVISED -
D774498-SHT-plan 31	PLOT DATE = 4/4/2014	DATE -	REVISED -

**STATE OF ILLINOIS
 DEPARTMENT OF TRANSPORTATION**

PLAN SHEET

SCALE: SHEET OF SHEETS STA. TO STA.

F.A.P. RTE.	SECTION	COUNTY	TOTAL SHEETS	SHEET NO.
712	128RS-4,148KIRS-2	Macon	73	31
ILLINOIS FED. AID PROJECT			CONTRACT NO. 74475	