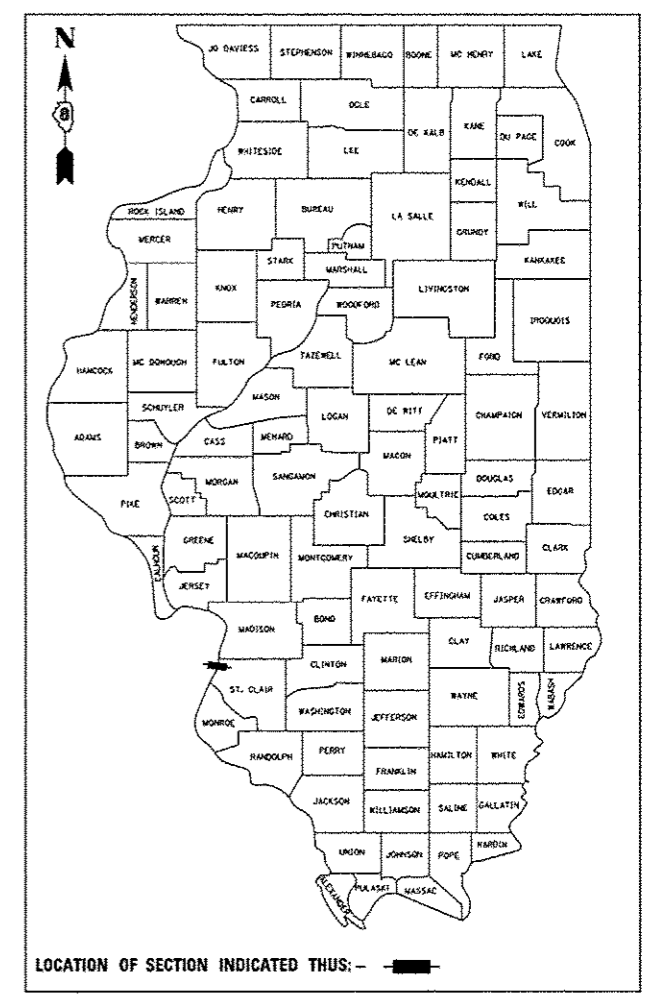


F.A.P. RTE.	SECTION	COUNTY	TOTAL SHEETS	SHEET NO.
799	1BR, DRS-2	ST. CLAIR	156	1
FED. ROAD DIST. NO. 8		ILLINOIS	CONTRACT NO. 76B03	

* 156+3 + 159 TOTAL SHEETS

D-98-074-07



LOCATION OF SECTION INDICATED THUS: — ■ —

STATE OF ILLINOIS
DEPARTMENT OF TRANSPORTATION
DIVISION OF HIGHWAYS

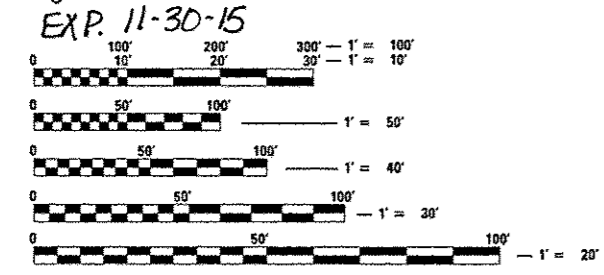
**PROPOSED
HIGHWAY PLANS**

FAP ROUTE 799 ILLINOIS AVENUE OVER THE MISSISSIPPI RIVER
SECTION 1BR, DRS-2
PROJECT NO. ACNHPP-0799 (003)
PARTIAL DECK REPLACEMENT AND STRUCTURAL REPAIRS
ST. CLAIR COUNTY
JOB NO. C-98-080-07

FOR INDEX OF SHEETS, SEE SHEET NO. 2
FOR LIST OF STANDARDS, SEE SHEET NO. 2
MLK BRIDGE (OTHER PRINCIPAL ARTERIAL)
ADT = 26000 (2011)
ADT = 26700 (2015)
ADT = 30700 (2032)
SU = 1.9%
MU = 6.2%
POSTED SPEED = 45 MPH



Jerilyn M. Hassard
5/2/14
EXP. 11-30-15

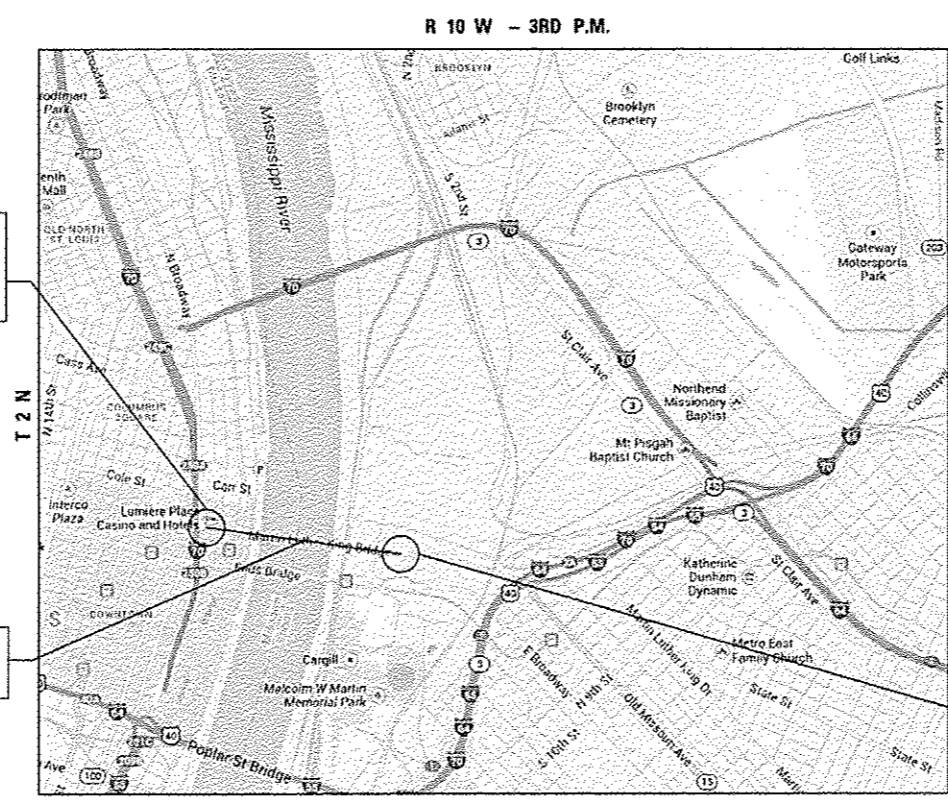


FULL SIZE PLANS HAVE BEEN PREPARED USING STANDARD ENGINEERING SCALES. REDUCED SIZED PLANS WILL NOT CONFORM TO STANDARD SCALES. IN MAKING MEASUREMENTS ON REDUCED PLANS, THE ABOVE SCALES MAY BE USED.

J.U.L.I.E.
JOINT UTILITY LOCATION INFORMATION FOR EXCAVATION
1-800-892-0123
OR 811
MISSOURI ONE CALL (800 DIG RITE)

PROJECT ENGINEER: TIM PADGETT (618) 346-3325
PROJECT MANAGER: PHIL COPPERNOLL (618) 346-3480
CONTRACT NO.: 76B03

MLK BRIDGE & 3RD ST
BEGIN IMPROVEMENTS
STA. 3+28.07



MLK BRIDGE
SN 082-6001

MLK BRIDGE
END IMPROVEMENTS
STA. 43+38.39

EAST ST. LOUIS TOWNSHIP
ST. CLAIR COUNTY
LOCATION MAP

GROSS AND NET LENGTH OF IMPROVEMENT = 4010.32 FT = 0.76 MILES



Shiraz Tariq
5/2/14
SHIRAZ TARIQ, P.E.
ILLINOIS REGISTERED ENGINEER NO. 062-064219
REGISTRATION EXPIRES NOV. 30, 2015



LI LIN ENGINEERING, LTD.
WESTMONT, ILLINOIS 60559
(630) 323-5168

STATE OF ILLINOIS
DEPARTMENT OF TRANSPORTATION
DIVISION OF HIGHWAYS
SUBMITTED *Mar 21 20 14*
Jeffrey L. K...
DEPUTY DIRECTOR OF HIGHWAYS, REGION ENGINEER
May 9 20 14
John D. Baranzelli, P.E.
ENGINEER OF DESIGN AND ENVIRONMENT
May 9 20 14
Chris Connor, P.E.
DIRECTOR OF HIGHWAYS, CHIEF ENGINEER

**PRINTED BY THE AUTHORITY
OF THE STATE OF ILLINOIS**