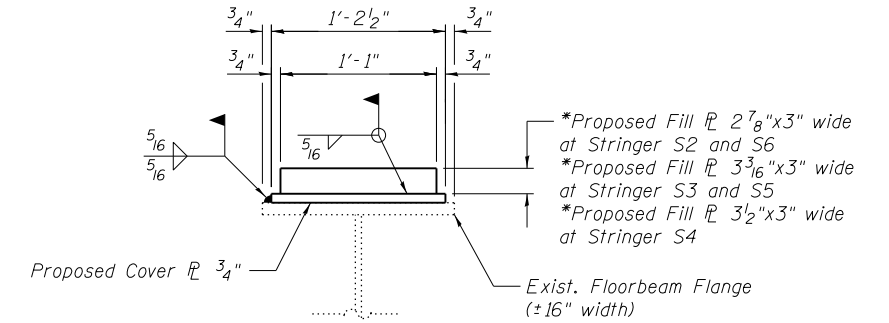
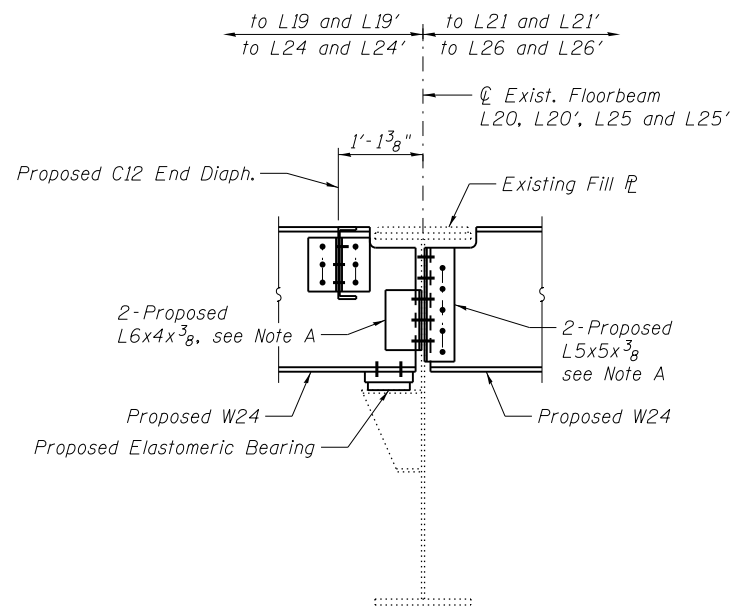


**ELEVATION - FLOORBEAM L20 AND L25 (SHOWN)**  
**ELEVATION - FLOORBEAM L20' AND L25' (SIMILAR)**

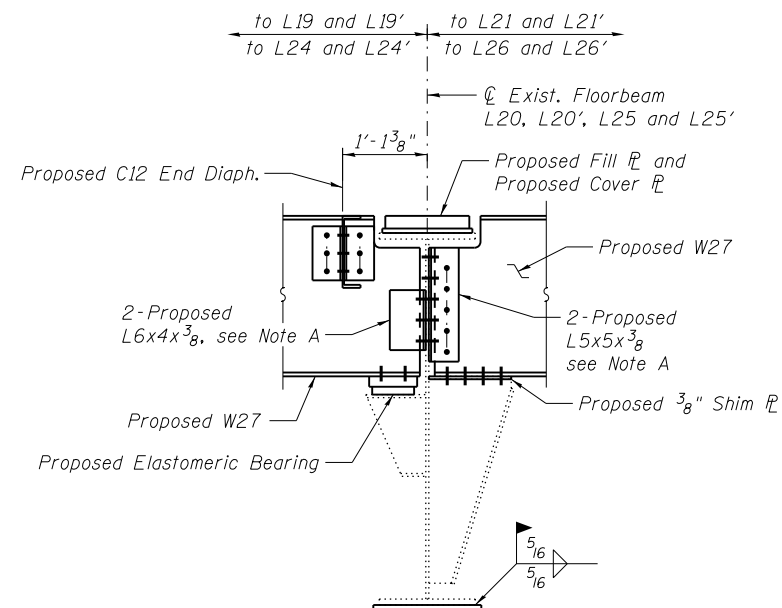


**DETAIL OF COVER PLATE AND FILL PLATE**  
 at Stringer S2, S3, S4, S5 and S6

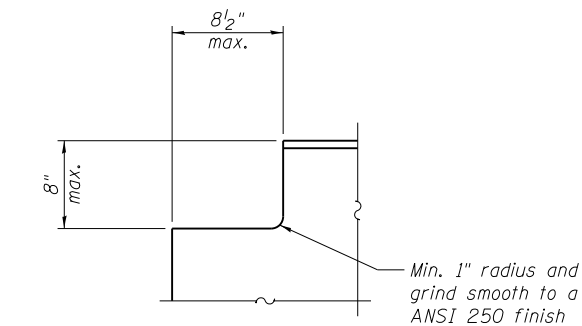
\*Proposed Fill  $\ell$  2 7/8" x 3" wide at Stringer S2 and S6  
 \*Proposed Fill  $\ell$  3 3/8" x 3" wide at Stringer S3 and S5  
 \*Proposed Fill  $\ell$  3 1/2" x 3" wide at Stringer S4  
 \* Remove existing fill  $\ell$  and center proposed fill  $\ell$  along  $\ell$  stringer line, attach to proposed cover  $\ell$



**SECTION A-A**



**SECTION B-B**



**TYPICAL STRINGER COPING DETAIL**

Note A:  
 Field drill holes using existing holes as template. Remainder of holes may be shop or field drilled.

Notes:  
 For diaphragm and connection angle details, see sheet S24.  
 For elastomeric bearing details and quantities, see sheet S23.  
 For additional cover plate details for floorbeam strengthening, see sheet S21.  
 Cost of stringer connection angles and shim plates shall be included in Furnishing and Erecting Structural Steel.  
 Cost of cover plates and fill plates shall be included in Structural Steel Repair.  
 Load carrying components designated "NTR" shall conform to the Impact Testing Requirement, Zone 2.

**BILL OF MATERIAL**

Item	Unit	Total
Structural Steel Repair	Pound	11,330



USER NAME =	DESIGNED - MEL/YSS	REVISED
	CHECKED - CDB/ZJB	REVISED
PLOT SCALE =	DRAWN - PRC	REVISED
PLOT DATE = 05/02/2014	CHECKED - MEL/YSS	REVISED

**STATE OF ILLINOIS**  
**DEPARTMENT OF TRANSPORTATION**

**MAIN SPANS GRID DECK FRAMING DETAILS - 2**  
**S.N. 082-6001 MLK BRIDGE OVER MISSISSIPPI RIVER**

SHEET NO. S18 OF S138 SHEETS

F.A.P. RTE.	SECTION	COUNTY	TOTAL SHEETS	SHEET NO.
799	1BR, DRS-2	ST. CLAIR	156	36
CONTRACT NO. 76B03				
ILLINOIS FED. AID PROJECT				