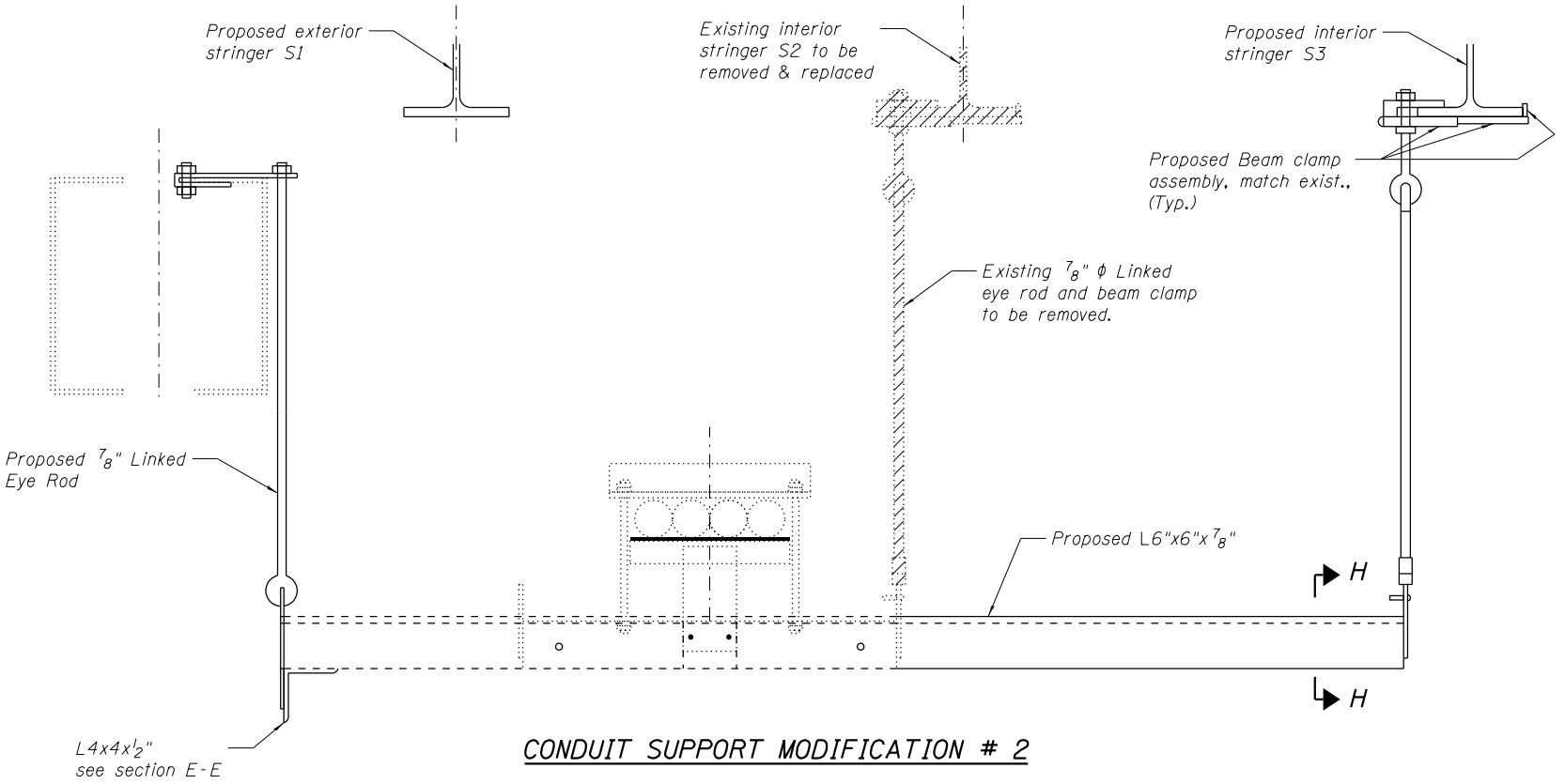
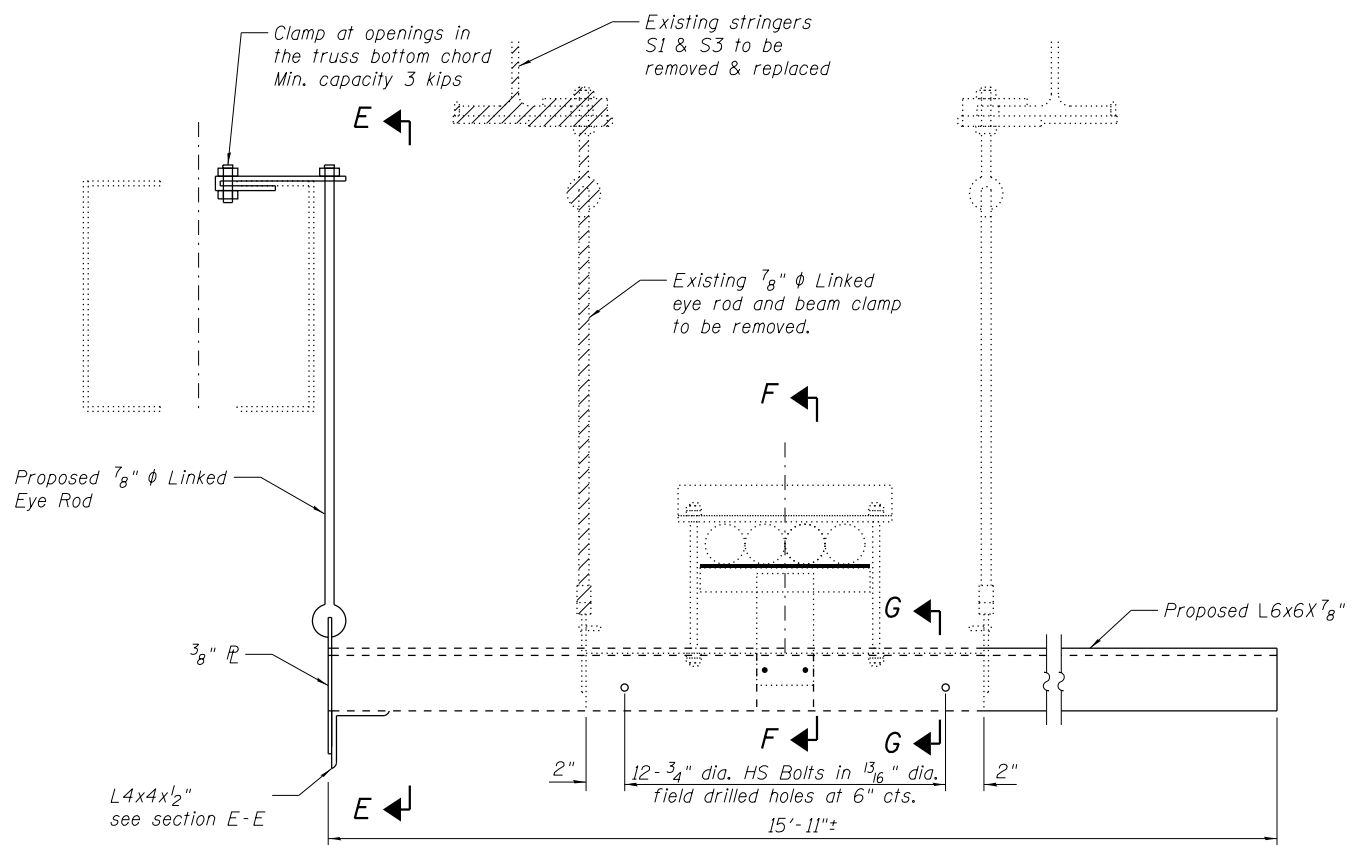


**EXISTING CONFIGURATION**  
 (Existing Hangers - H6 & H12)  
 (Total 40 Locations, 4-H6 and 36-H12)

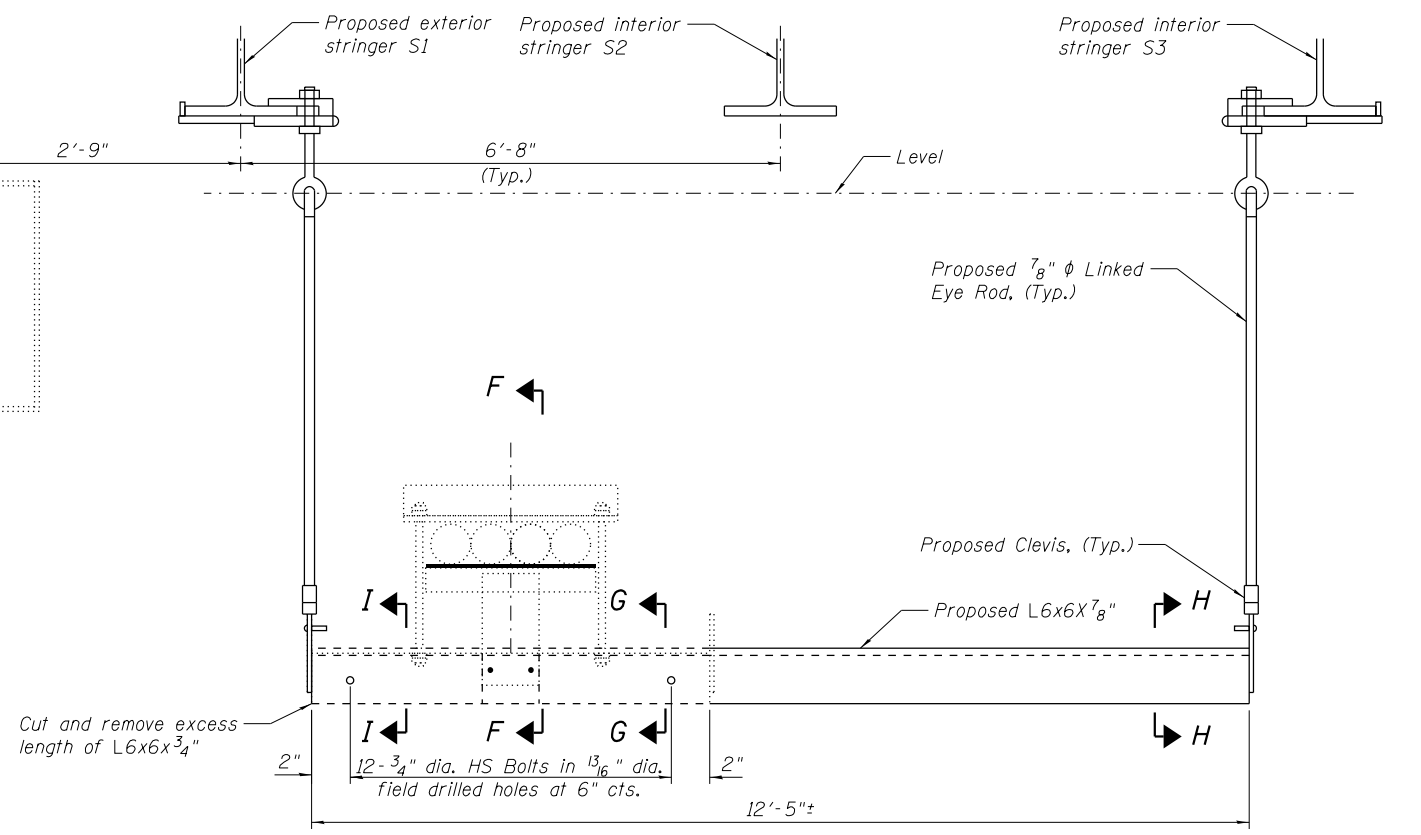


**CONDUIT SUPPORT MODIFICATION # 2**



**CONDUIT SUPPORT MODIFICATION # 1**

Notes:  
 See sheet S027 of S138 for bill of material, cross sections, locations of hangers, notes and other details.



**FINAL CONFIGURATION**  
 (Modified Hangers - H6 & H12)  
 (Total 40 Locations, 4-H6 and 36-H12)

(Sheet 2 of 3)



USER NAME =	DESIGNED - JJA	REVISED -
FILE NAME =	CHECKED - TBP	REVISED -
PLOT SCALE =	DRAWN - AJF	REVISED -
PLOT DATE = 05/02/2014	CHECKED - VPT	REVISED -

**STATE OF ILLINOIS**  
**DEPARTMENT OF TRANSPORTATION**

**MAIN SPANS CONDUIT HANGER MODIFICATION DETAILS**  
**S.N. 082-6001 MLK BRIDGE OVER MISSISSIPPI RIVER**

SHEET NO. S026 OF S138 SHEETS

F.A.P. RTE. = 799	SECTION = IBR, DRS-2	COUNTY = ST. CLAIR	TOTAL SHEETS = 156	SHEET NO. = 044
CONTRACT NO. 76B03				
ILLINOIS FED. AID PROJECT				