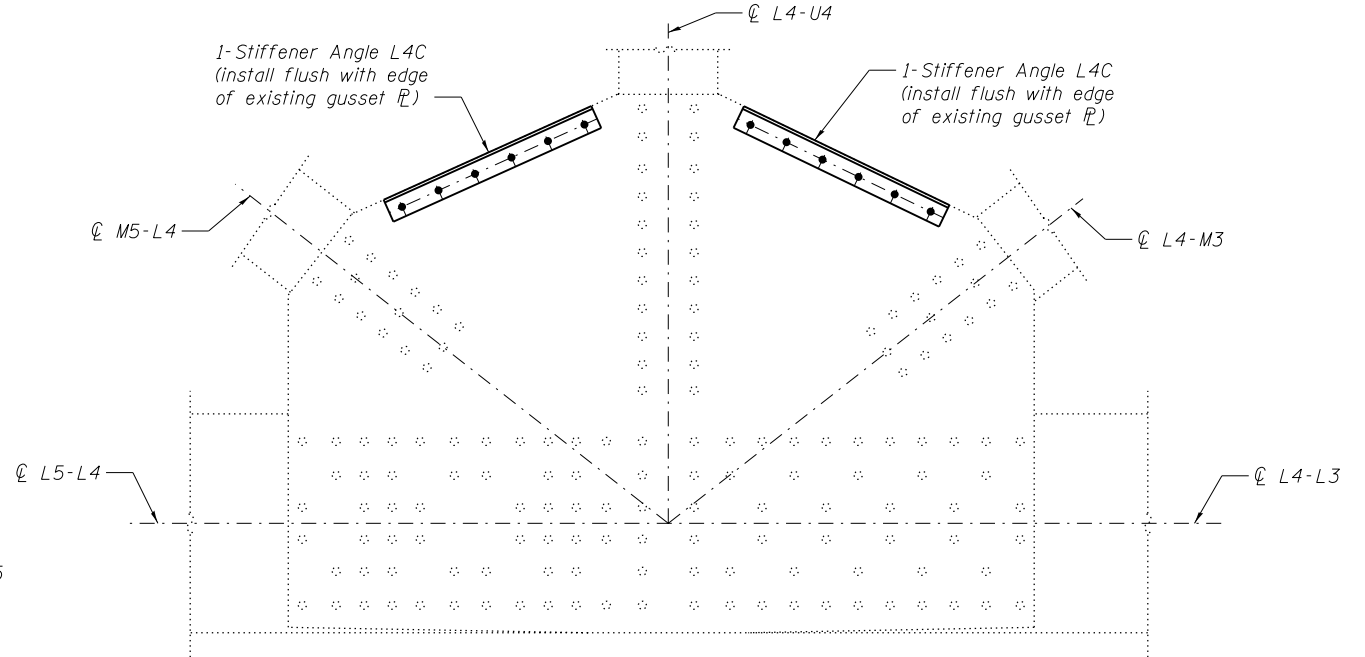


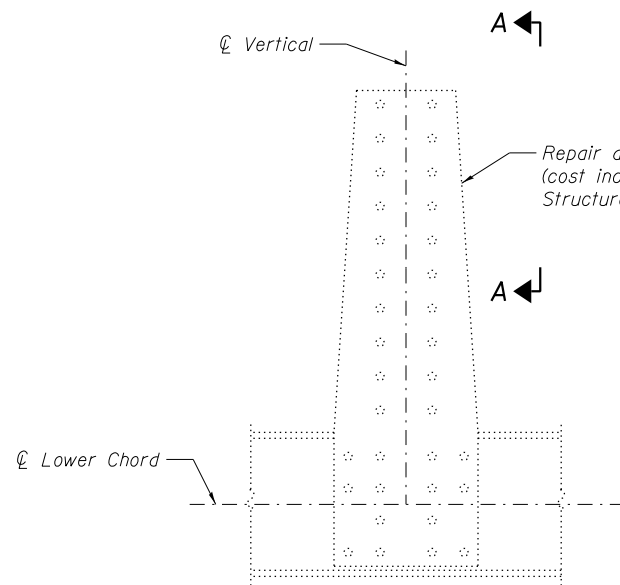
**OUTSIDE PLATE AT PANEL POINT L4N AND L4S**  
**(L4'N AND L4'S SIMILAR)**  
 (Span 9 and 11)



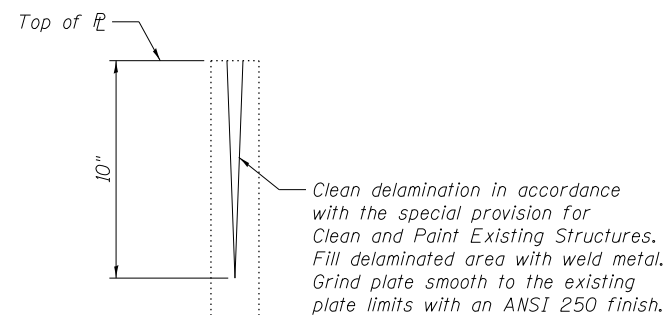
**INSIDE PLATE AT PANEL POINT L4N AND L4S**  
**(L4'N AND L4'S SIMILAR)**  
 (Span 9 and 11)

\* Outside gusset plate at L4'N is warped both sides of vertical L4-U4. Plates shall be straightened prior to attaching stiffener angles. Contractor shall submit a straightening procedure to the Engineer for review and approval prior to the performing work.

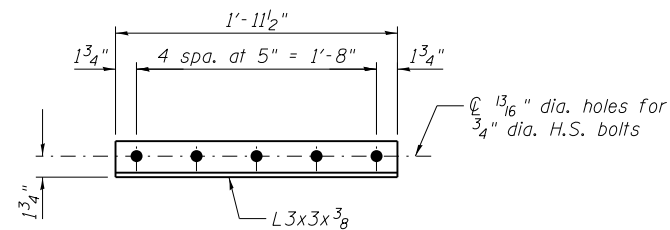
**GUSSET PLATE STRENGTHENING**



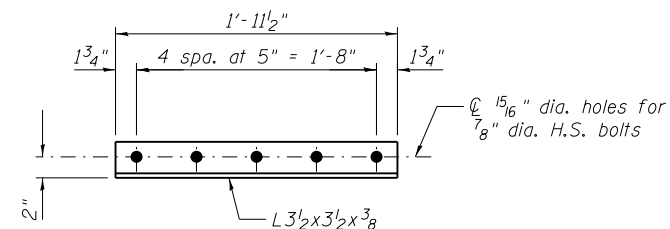
**INSIDE PLATE AT PANEL POINT L25N**  
 (Span 10)



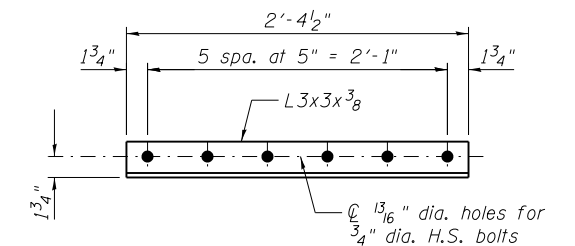
**VIEW A-A**



**STIFFENER ANGLE L4A**



**STIFFENER ANGLE L4B**



**STIFFENER ANGLE L4C**

Notes:  
 Field drill holes in existing gusset plate using new material as template.

**BILL OF MATERIAL**

Item	Unit	Total
Structural Steel Repair	Pound	340



USER NAME =	DESIGNED - MEL	REVISED
	CHECKED - CDB	REVISED
PLOT SCALE =	DRAWN - PRC	REVISED
PLOT DATE = 05/02/2014	CHECKED - MEL	REVISED

**STATE OF ILLINOIS**  
**DEPARTMENT OF TRANSPORTATION**

**MAIN SPANS GUSSET PLATE STRENGTHENING - 2**  
**S.N. 082-6001 MLK BRIDGE OVER MISSISSIPPI RIVER**

SHEET NO. S47 OF S138 SHEETS

F.A.P. RTE.	SECTION	COUNTY	TOTAL SHEETS	SHEET NO.
799	1BR, DRS-2	ST. CLAIR	156	65
ILLINOIS FED. AID PROJECT			CONTRACT NO. 76B03	