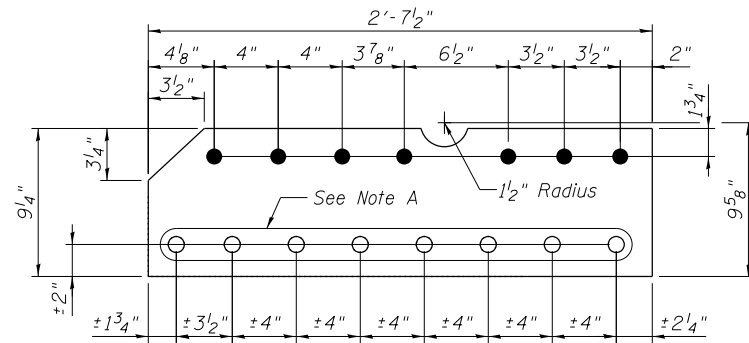


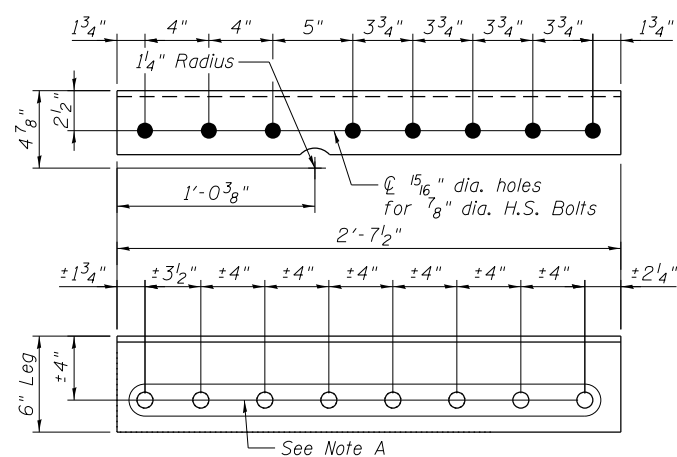
REPAIR ANGLE L8F

L6 x 4 x 3/8 x 2'-7"



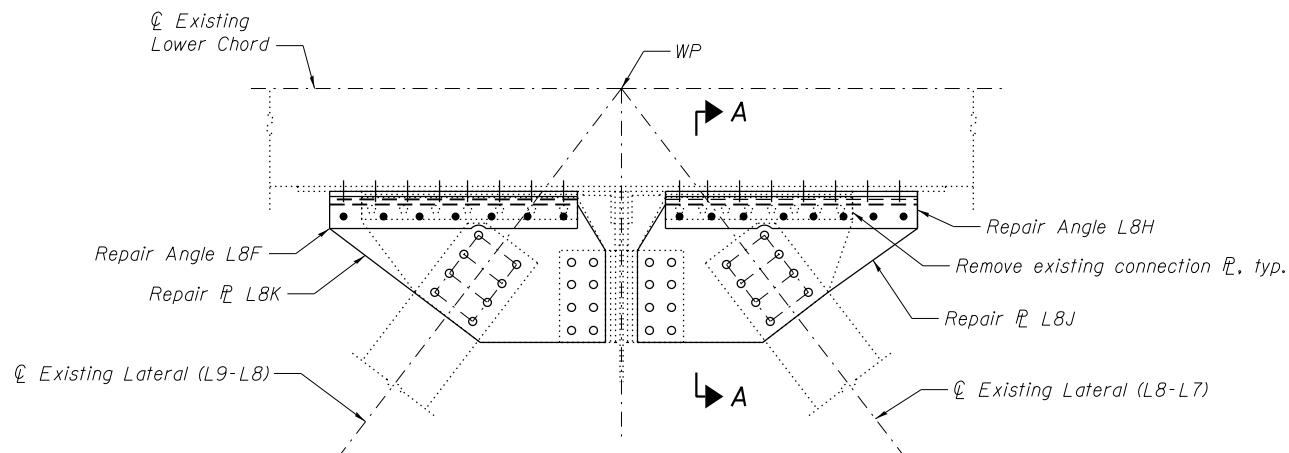
REPAIR PL L8G

PL 5/8 x 9/4 x 2'-7 1/2"



REPAIR ANGLE L8H

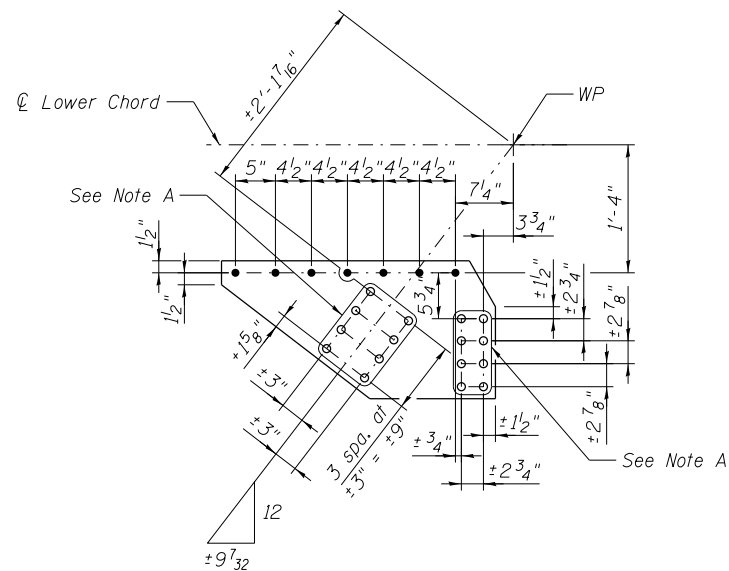
L6 x 4 x 3/8 x 2'-7 1/2"



LOWER LATERAL AT PANEL POINT L8N AND L8S

(L8'N AND L8'S SIMILAR)

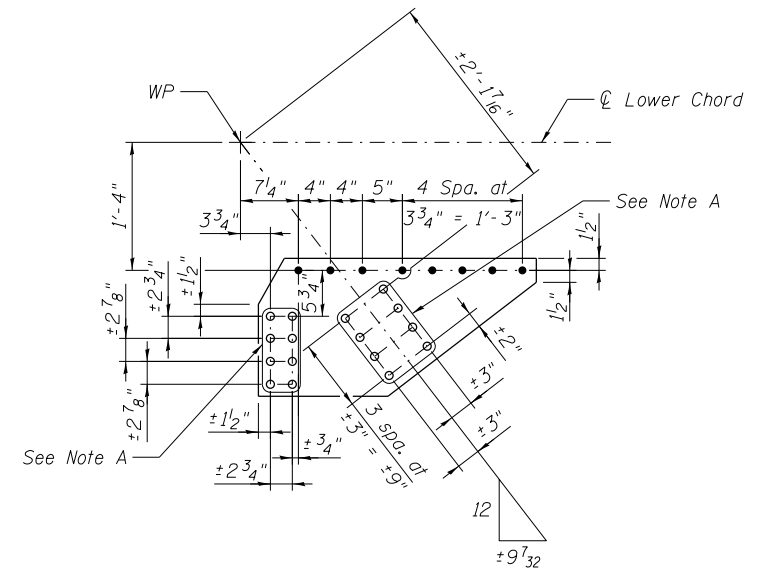
(Span 9 and Span 11)



REPAIR PL L8K

PL 5/8 x 17 1/4 x 2'-10 1/4"

Note: Repair PL L8K requires 15/16" ϕ holes for 7/8" ϕ H.S. bolts.



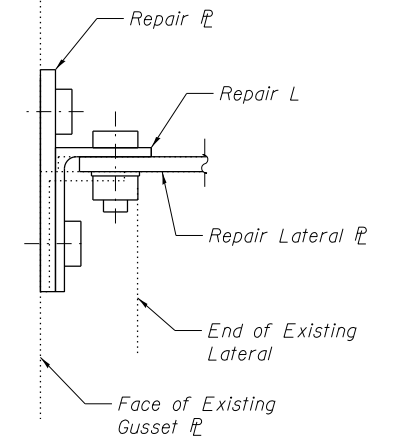
REPAIR PL L8J

PL 5/8 x 17 1/4 x 2'-10 3/4"

Note: Repair PL L8J requires 15/16" ϕ holes for 7/8" ϕ H.S. bolts.

Note A:
Field drill holes using existing holes as template.
Remainder of holes may be shop or field drilled.

Notes:
All bolted connections shown on this sheet shall be made with 1" dia. H.S. bolts unless otherwise noted.
For locations of pieces L8F, L8G and L8H, see sheet S50.



SECTION A-A



USER NAME =	DESIGNED - MEL/YSS	REVISED
	CHECKED - CDB	REVISED
PLOT SCALE =	DRAWN - AEC	REVISED
PLOT DATE = 05/09/2014	CHECKED - MEL	REVISED

STATE OF ILLINOIS
DEPARTMENT OF TRANSPORTATION

MAIN SPAN GUSSET PLATE STRENGTHENING - 5A
S.N. 082-6001 MLK BRIDGE OVER MISSISSIPPI RIVER

SHEET NO. S50A OF S138 SHEETS

F.A.P. RTE.	SECTION	COUNTY	TOTAL SHEETS	SHEET NO.
799	1BR, DRS-2	ST. CLAIR	156	68A
CONTRACT NO. 76B03				

ILLINOIS FED. AID PROJECT