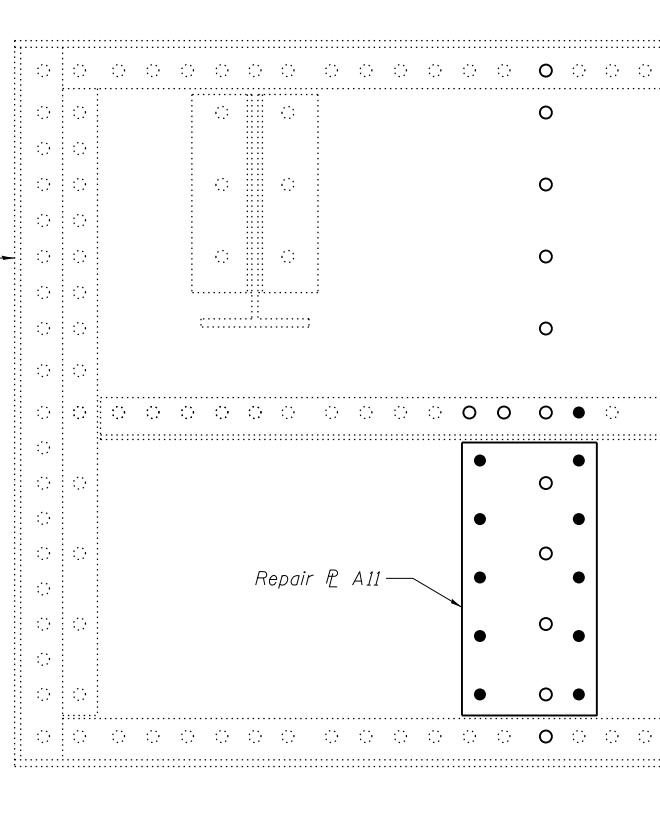
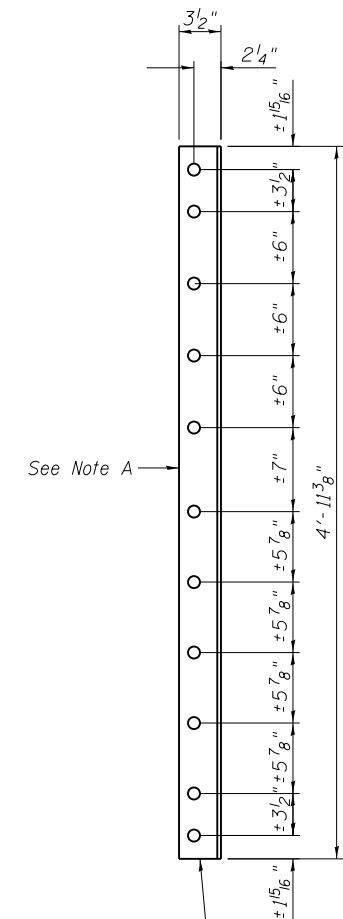


NORTH END AT PANEL POINT L9'
EAST FACE
(Span 11)



NORTH END AT PANEL POINT L9'
WEST FACE
(Span 11)

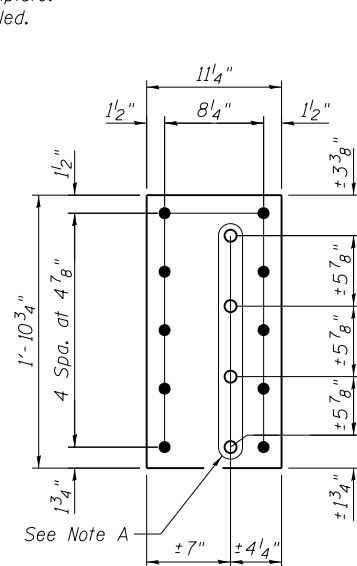
FLOORBEAM WEB REPAIRS



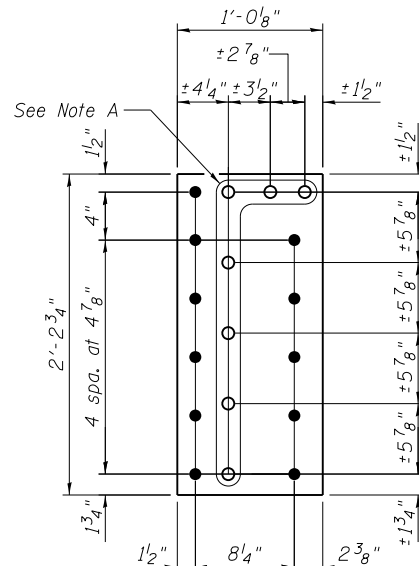
REPAIR ANGLE D11
L5x3 1/2 x 5/16 x 4'-11 3/8"

Grind edge of angle leg (short side) to fit existing fillet, top and bottom

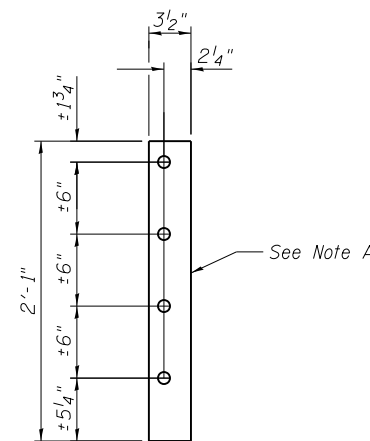
Note A:
Field drill holes using existing holes as template.
Remainder of holes may be shop or field drilled.



REPAIR P A11
P 3/8" x 11 1/4" x 1'-10 3/4"



REPAIR P B11
P 9/16" x 12 1/8" x 2'-2 3/4"



FILL P C11
P 9/16" x 3 1/2" x 2'-1"

BILL OF MATERIAL

Item	Unit	Total
Structural Steel Repair	Pound	160



USER NAME =	DESIGNED - PRC	REVISED
	CHECKED - CDB	REVISED
PLOT SCALE =	DRAWN - PRC	REVISED
PLOT DATE = 05/02/2014	CHECKED - CDB	REVISED

STATE OF ILLINOIS
DEPARTMENT OF TRANSPORTATION

MAIN SPANS FLOORBEAM WEB REPAIRS - 11
S.N. 082-6001 MLK BRIDGE OVER MISSISSIPPI RIVER

SHEET NO. S75 OF S138 SHEETS

F.A.P. RTE. 799	SECTION 1BR, DRS-2	COUNTY ST. CLAIR	TOTAL SHEETS 156	SHEET NO. 93
CONTRACT NO. 76B03				ILLINOIS FED. AID PROJECT