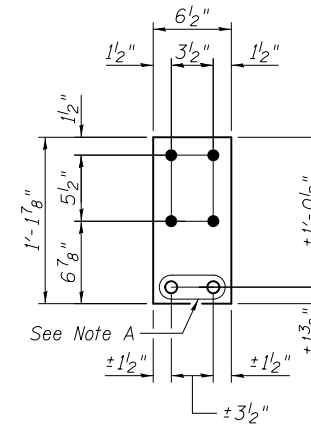


SOUTH END AT PANEL POINT L4'
WEST FACE
(Span 11)

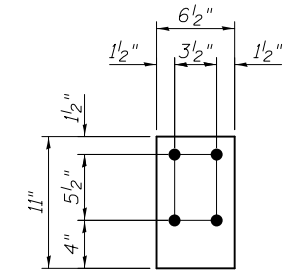
SOUTH END AT PANEL POINT L4'
EAST FACE
(Span 11)

FLOORBEAM WEB REPAIRS

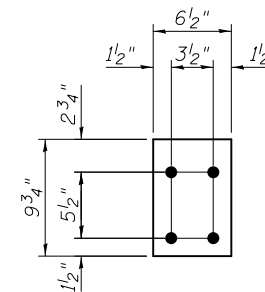
Note A:
Field drill holes using existing holes as template.
Remainder of holes may be shop or field drilled.



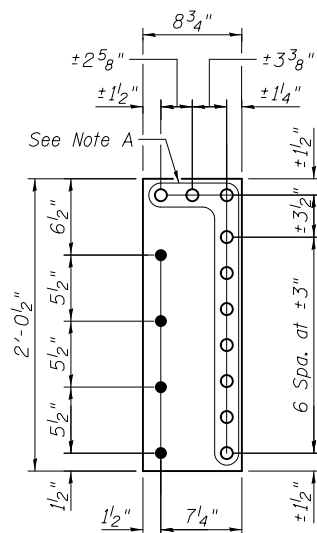
REPAIR R F13
R 3/8" x 6 1/2" x 1'-1 7/8"



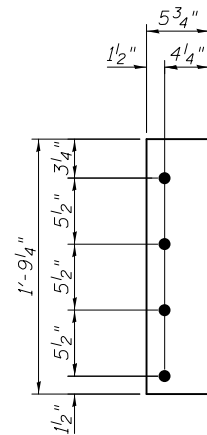
FILL R H13
R 5/16" x 6 1/2" x 0'-11"



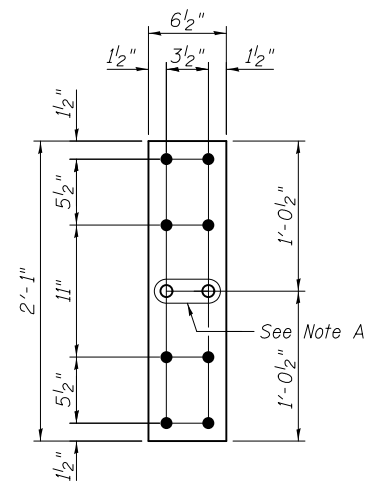
REPAIR R G13
R 3/8" x 6 1/2" x 0'-9 3/4"



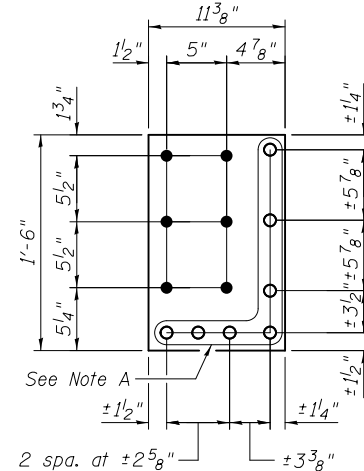
REPAIR R A13
R 3/8" x 8 3/4" x 2'-0 1/2"



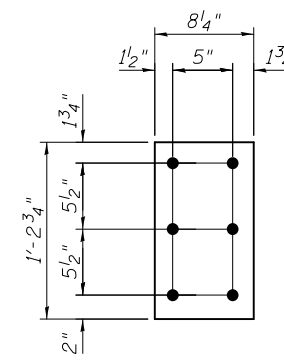
FILL R B13
R 9/16" x 5 3/4" x 1'-9 1/4"



REPAIR R C13
R 3/8" x 6 1/2" x 2'-1"



REPAIR R D13
R 3/8" x 11 3/8" x 1'-6"



FILL R E13
R 9/16" x 8 1/4" x 1'-2 3/4"

BILL OF MATERIAL

Item	Unit	Total
Structural Steel Repair	Pound	250



USER NAME =
DESIGNED - PRC
CHECKED - CDB
PLOT SCALE =
DRAWN - PRC
PLOT DATE = 03/20/2014
CHECKED - CDB

DESIGNED - PRC
CHECKED - CDB
DRAWN - PRC
CHECKED - CDB

REVISED
REVISED
REVISED
REVISED

STATE OF ILLINOIS
DEPARTMENT OF TRANSPORTATION

MAIN SPANS FLOORBEAM WEB REPAIRS - 13
S.N. 082-6001 MLK BRIDGE OVER MISSISSIPPI RIVER

SHEET NO. S77 OF S138 SHEETS

F.A.P. RTE.	SECTION	COUNTY	TOTAL SHEETS	SHEET NO.
799	IBR, DRS-2	ST. CLAIR	156	95
CONTRACT NO. 76B03				
ILLINOIS FED. AID PROJECT				