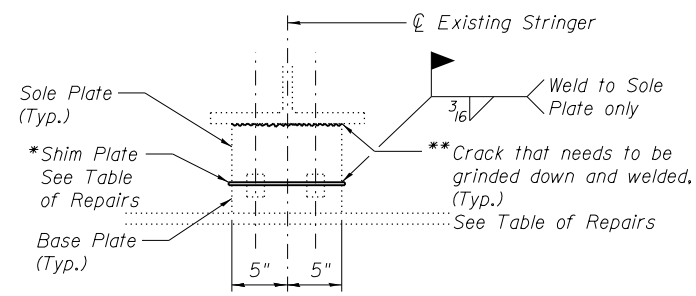
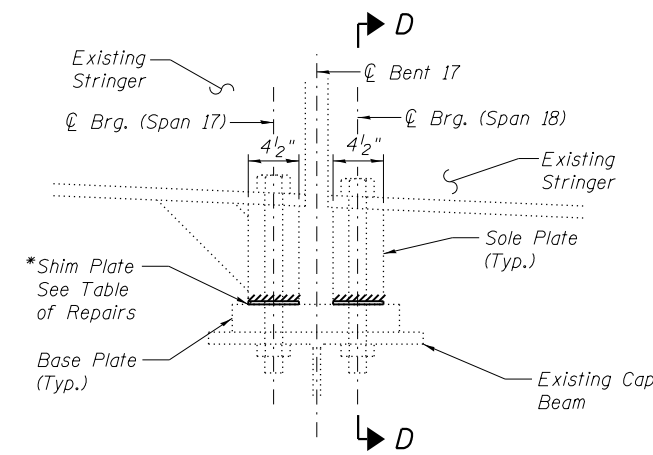


ELEVATION

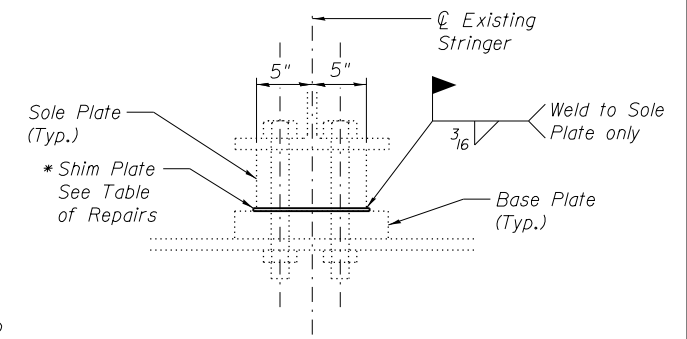


SECTION A-A

BEARINGS FOR S2, S3, S4, S5, S6, AND S7 AT BENT W

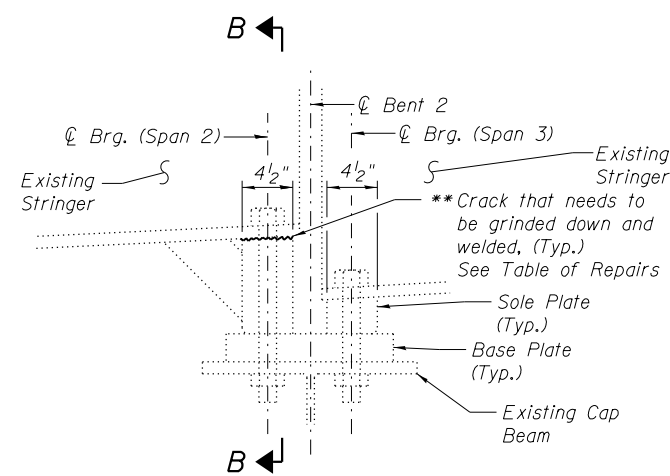


ELEVATION

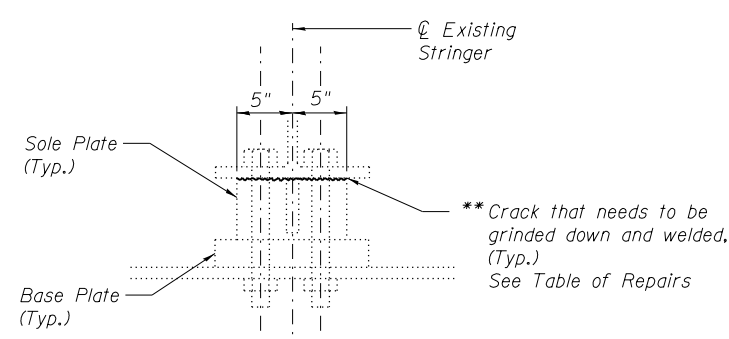


SECTION D-D

BEARINGS FOR S2, S3, AND S6 AT BENT 17

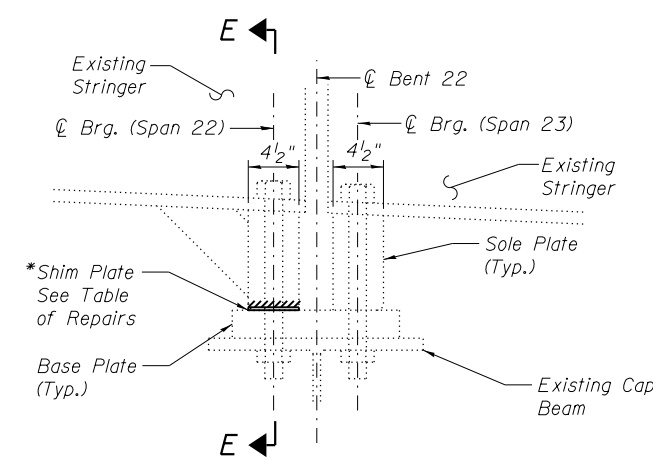


ELEVATION

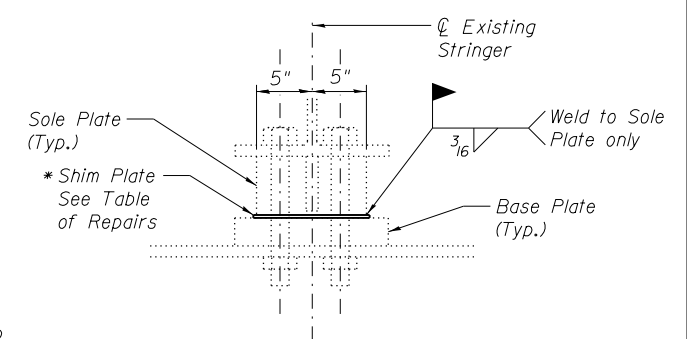


SECTION B-B

BEARINGS FOR S3 AT BENT 2

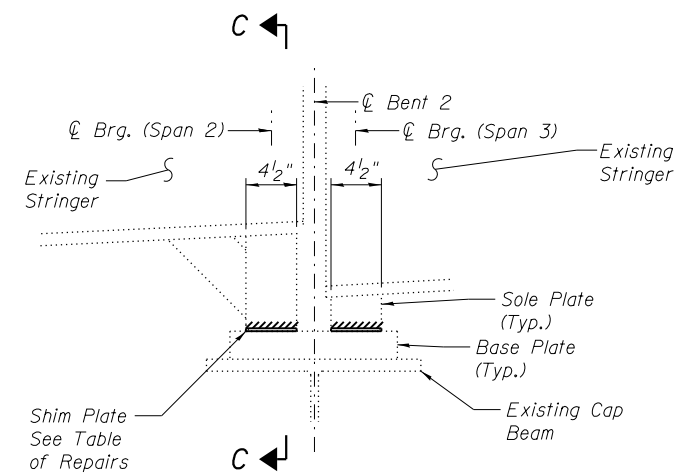


ELEVATION

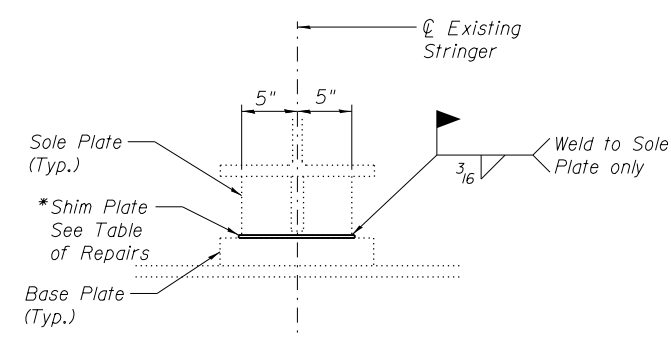


SECTION E-E

BEARINGS FOR S2 AT BENT 22

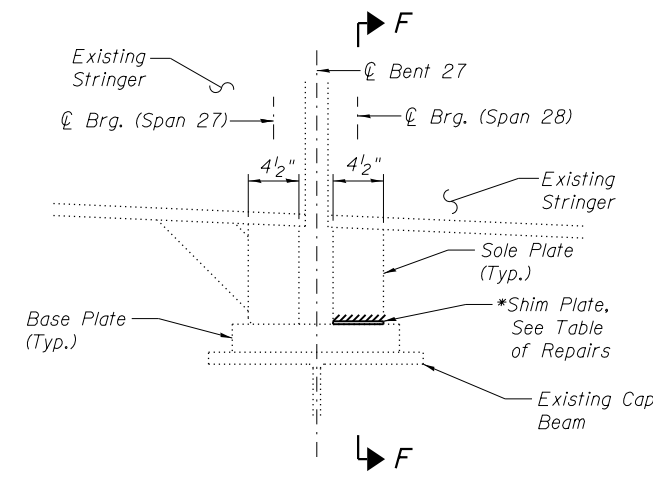


ELEVATION

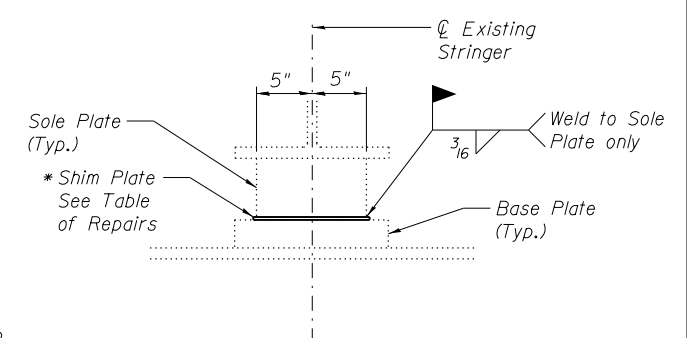


SECTION C-C

BEARINGS FOR S4 AT BENT 2



ELEVATION



SECTION F-F

BEARINGS FOR S4 AT BENT 27

Notes:
 See Sheet S090 of S138 for Bearing locations, other details, Table of Repairs and notes.
 See Illinois Approach bent repair sheets for details of existing 3/4" H.S. bolt repairs at Stringer 3 on Bent 17.

(Sheet 1 of 2)

USER NAME =	DESIGNED - JJA	REVISED -
FILE NAME =	CHECKED - TBP	REVISED -
PLOT SCALE =	DRAWN - AJF	REVISED -
PLOT DATE = 05/02/2014	CHECKED - VPT	REVISED -

F.A.P. RTE.	SECTION	COUNTY	TOTAL SHEETS	SHEET NO.
799	IBR, DRS-2	ST. CLAIR	156	107
CONTRACT NO. 76B03				