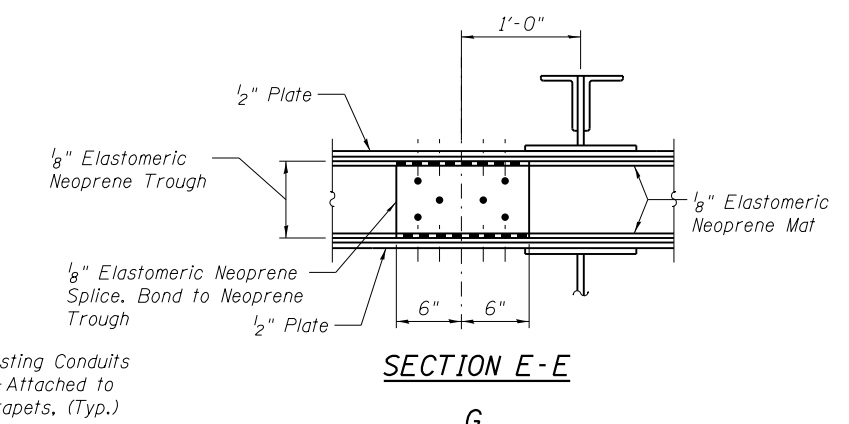
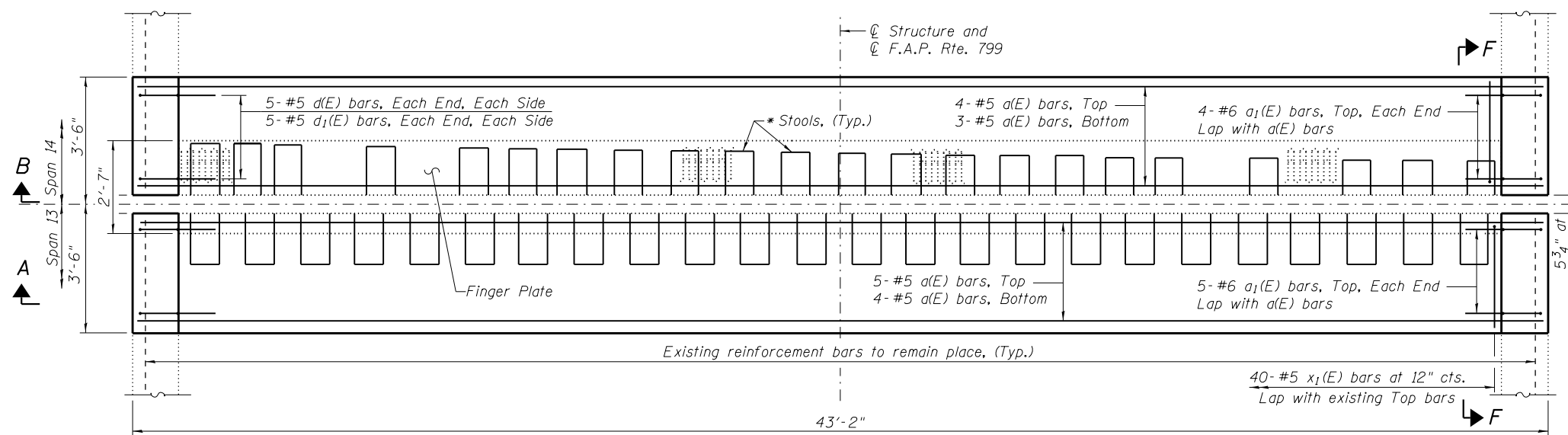
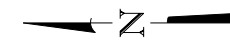


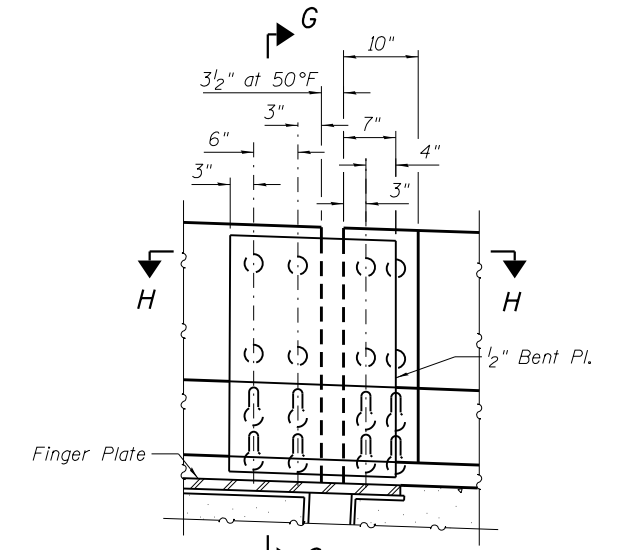
SECTION A-A AT PIER 13



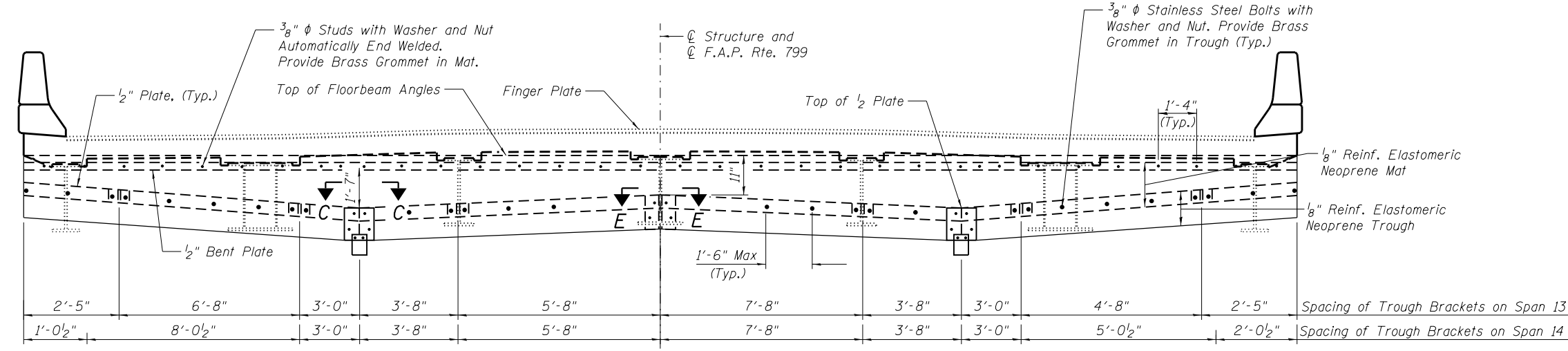
SECTION E-E



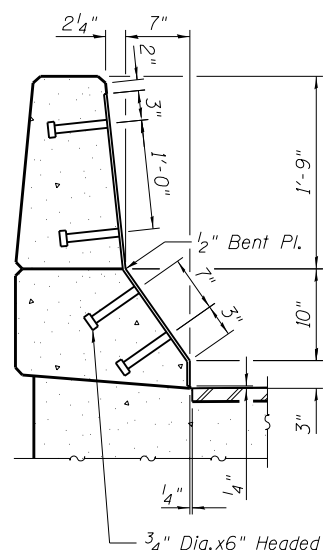
PLAN VIEW AT PIER 13



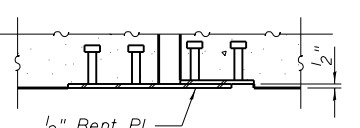
SECTION F-F



SECTION B-B



SECTION G-G



SECTION H-H

Note:
 See Sheet S104 of S138 for Section C-C and Section at End of Trough.
 See Sheet S105 of S138 for Bill of Material.
 For cross-section thru expansion joint and additional notes, see sheet S103 of S138.
 Re-attach existing conduit to parapets. Cost included with Concrete Superstructure.
 See Sheet S129 of S138 for Proposed Drainage System at Pier 13.

* Stools at the locations where cover plates are provided over floor beams shall be replaced. Use existing stools at all other locations.

(Sheet 2 of 5)



USER NAME =	DESIGNED - JJA	REVISED -
FILE NAME =	CHECKED - TBP	REVISED -
PLOT SCALE =	DRAWN - AJF	REVISED -
PLOT DATE = 05/02/2014	CHECKED - VPT	REVISED -

STATE OF ILLINOIS
 DEPARTMENT OF TRANSPORTATION

FINGER PLATE JOINT REPAIR
 S.N. 082-6001 MLK BRIDGE OVER MISSISSIPPI RIVER

F.A.P. RTE. 799	SECTION IBR, DRS-2	COUNTY ST. CLAIR	TOTAL SHEETS 156	SHEET NO. 120
CONTRACT NO. 76B03				ILLINOIS FED. AID PROJECT

SHEET NO. S102 OF S138 SHEETS