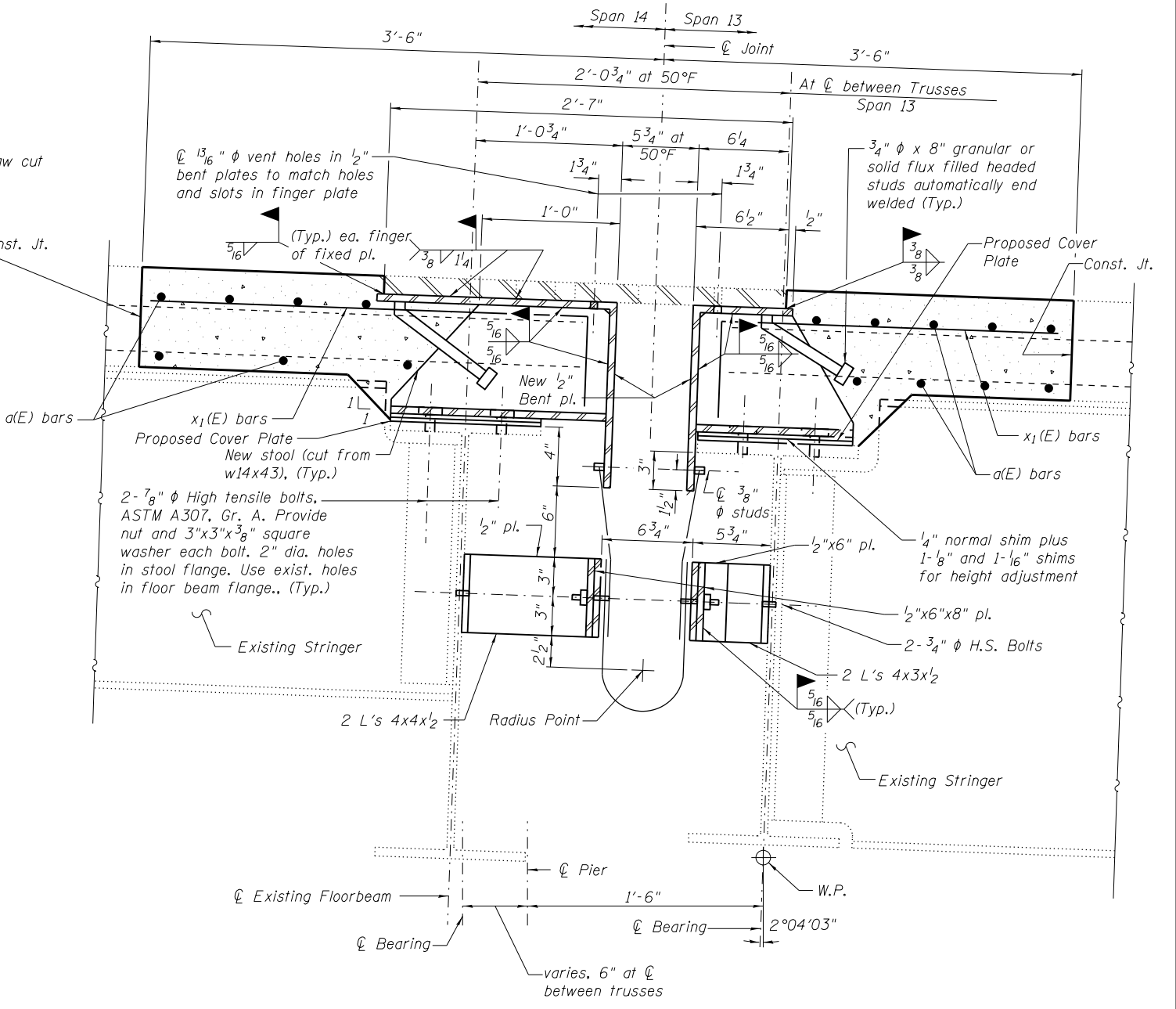


**SECTION THRU EXPANSION JOINT AT PIER 11**



**SECTION THRU EXPANSION JOINT AT PIER 13**

**Notes:**

- Existing finger and sliding plates shall be removed, stored and reused. The finger plate shall be separated from stools by removing weld using air-arc method and grind smooth all weld material remaining on finger plate.
- The Contractor shall provide new stools with revised heights at the locations where cover plates are provided over floor beam. The Contractor will keep log of stools and shall provide same number of stools except the height of the new stools shall be less. Holes for the fasteners shall be field drilled for proposed stools.
- Existing reinforcement shall be cleaned and incorporated into the new construction. Cost included with Concrete Removal.
- See Sheet S105 of S138 for Bill of Material.
- For proposed floorbeam top flange cover plates see Illinois Approach End Floorbeam Strengthening.
- Cost of proposed stools, bent plates and all the fasteners required shall be included with the pay item Remove and Reinstall Finger Plate Joint.
- Cost of proposed elastomeric trough shall be included with the pay item Fabric Reinforced Elastomeric Trough.

(Sheet 3 of 5)

<p><b>LIN ENGINEERING, LTD.</b> Consulting Engineers Springfield, Illinois</p>	USER NAME =	DESIGNED - JJA	REVISED -	<p><b>STATE OF ILLINOIS</b> <b>DEPARTMENT OF TRANSPORTATION</b></p>	<p><b>FINGER PLATE JOINT REPAIR</b> <b>S.N. 082-6001 MLK BRIDGE OVER MISSISSIPPI RIVER</b></p>	F.A.P. R.T.E. =	SECTION	COUNTY	TOTAL SHEETS	SHEET NO.
	FILE NAME =	CHECKED - TBP	REVISED -			799	IBR, DRS-2	ST. CLAIR	156	121
	PLOT SCALE =	DRAWN - AJF	REVISED -			CONTRACT NO. 76B03				
PLOT DATE = 05/02/2014	CHECKED - VPT	REVISED -	SHEET NO. S103 OF S138 SHEETS				ILLINOIS FED. AID PROJECT			