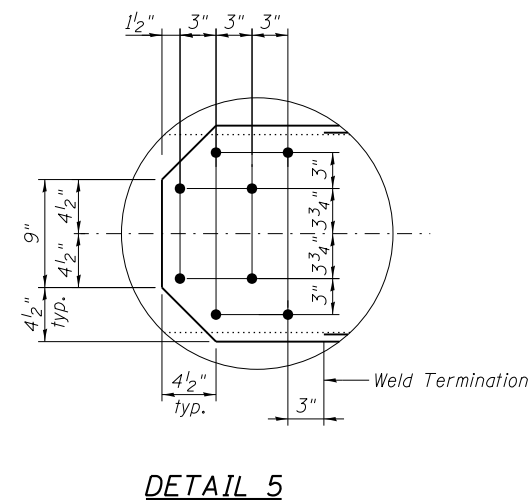
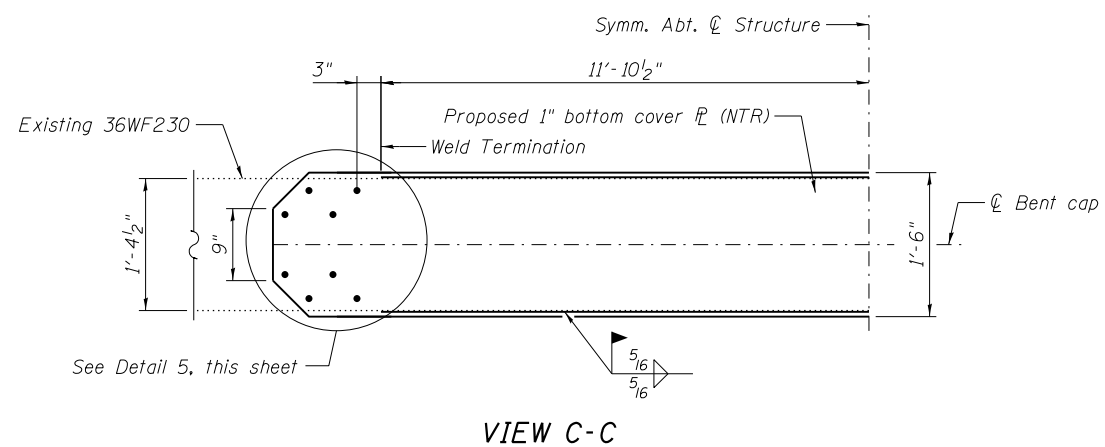
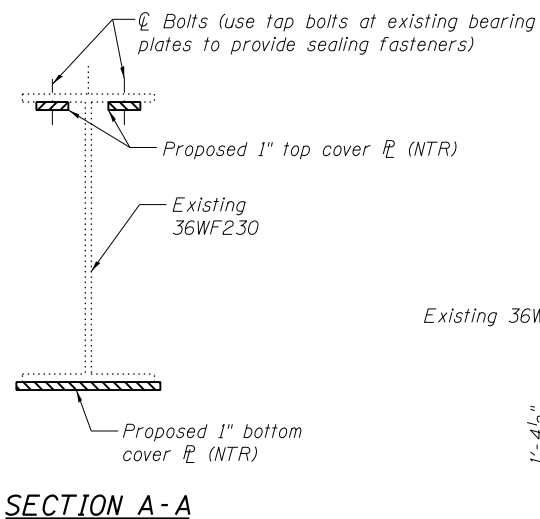
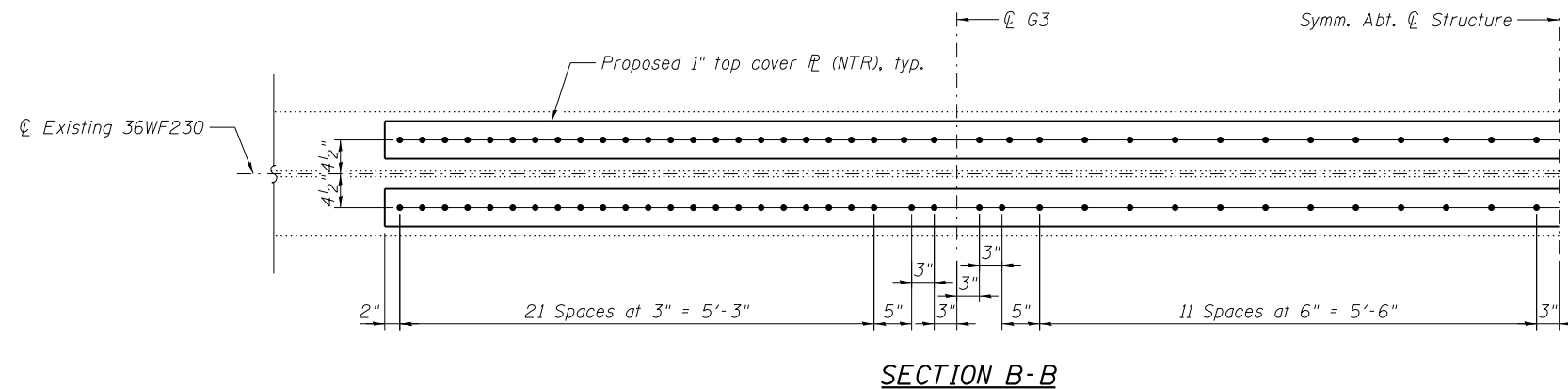
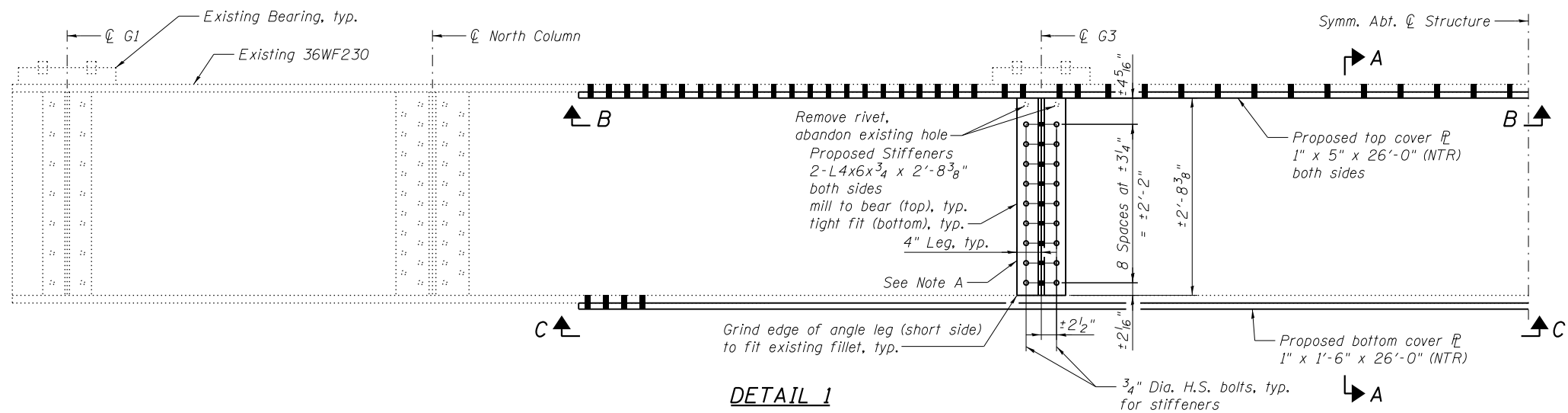


**BENT 6**  
(Looking East)



**BILL OF MATERIAL**

Item	Unit	Total
Structural Steel Repair	Pound	4,260

Notes:  
Load carrying components designated "NTR" shall conform to the Impact Testing Requirement, Zone 2.  
For Details 2, 3, and 4, see sheet S111.

Note A:  
Field drill holes using existing holes as template.  
Remainder of holes may be shop or field drilled.



USER NAME =	DESIGNED - YSS	REVISED
	CHECKED - ZJB	REVISED
PLOT SCALE =	DRAWN - AEC	REVISED
PLOT DATE = 05/02/2014	CHECKED - YSS	REVISED

STATE OF ILLINOIS  
DEPARTMENT OF TRANSPORTATION

MISSOURI APPROACH BENT 6 REPAIRS - 1  
S.N. 082-6001 MLK BRIDGE OVER MISSISSIPPI RIVER

SHEET NO. S110 OF S138 SHEETS

F.A.P. RTE.	SECTION	COUNTY	TOTAL SHEETS	SHEET NO.
799	IBR, DRS-2	ST. CLAIR	156	128
CONTRACT NO. 76B03				

ILLINOIS FED. AID PROJECT