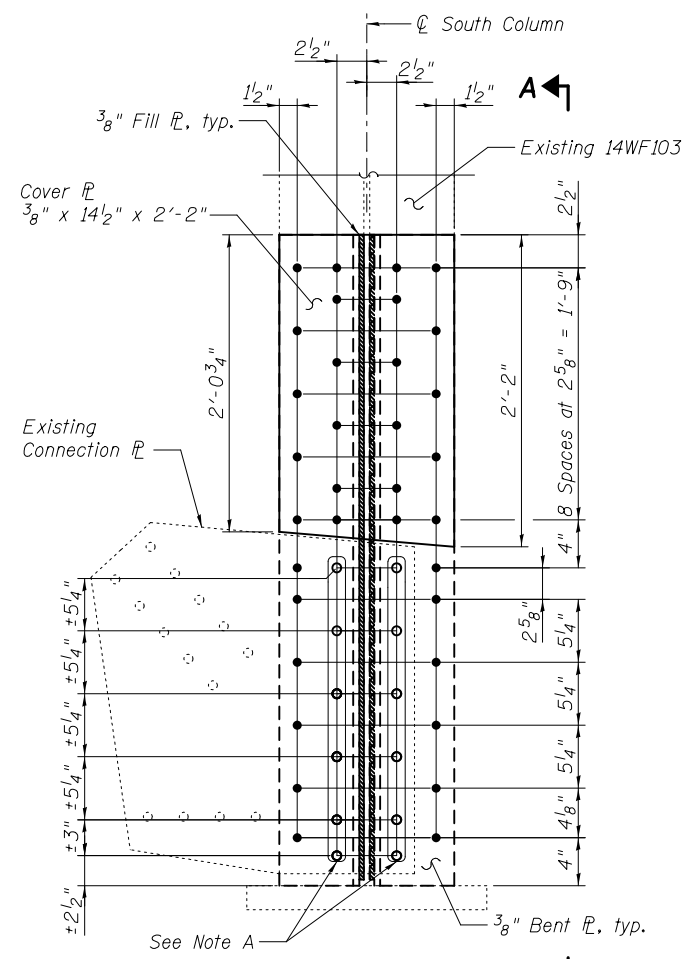


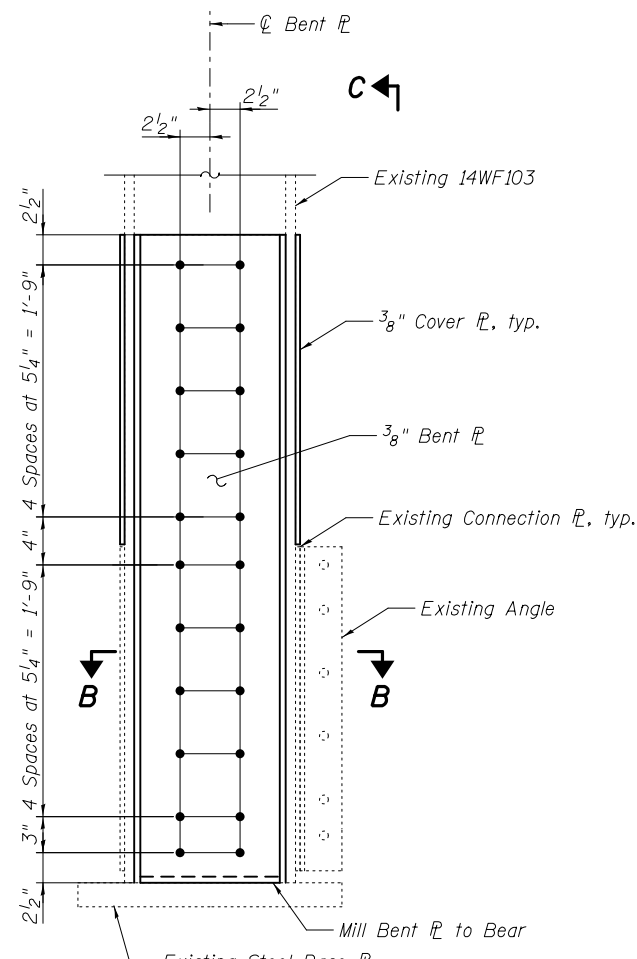
**SECTION B-B**

**DETAIL 2**  
(West Face)

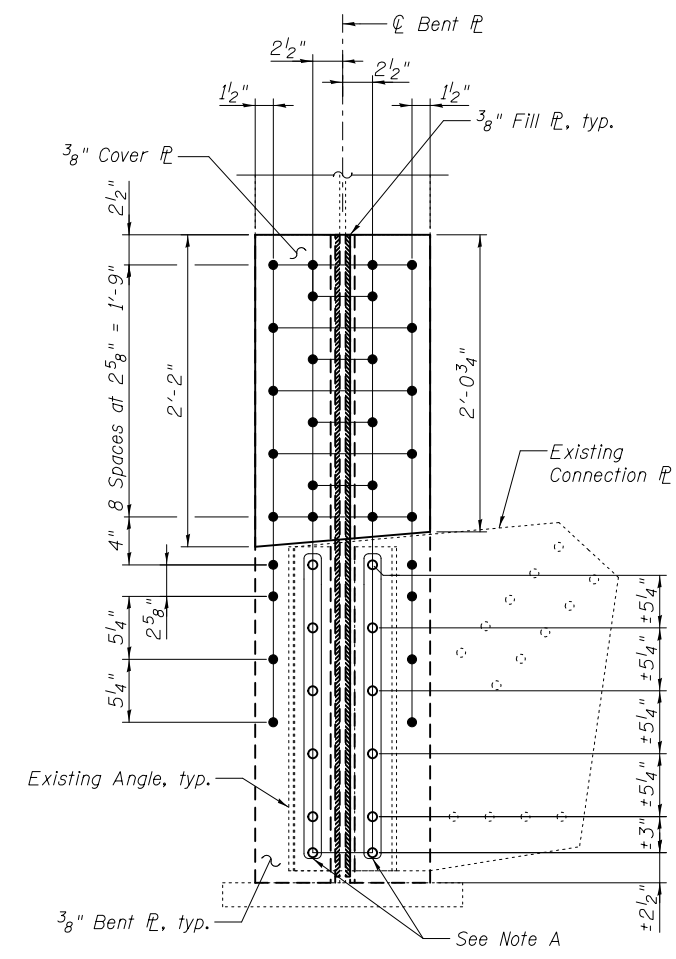
**DETAIL 3**  
(East Face)



**DETAIL 4**



**VIEW A-A**



**VIEW C-C**

Note A:  
Field drill holes using existing holes as template.  
Remainder of holes may be shop or field drilled.

Notes:  
All bolted connections shown on this sheet shall be made with 3/4" dia. H.S. bolts.  
For location of Detail 2, 3, 4 and Bill of Material see sheet S110.



USER NAME =	DESIGNED - YSS	REVISED
	CHECKED - ZJB	REVISED
PLOT SCALE =	DRAWN - AEC	REVISED
PLOT DATE = 03/20/2014	CHECKED - YSS	REVISED

STATE OF ILLINOIS  
DEPARTMENT OF TRANSPORTATION

MISSOURI APPROACH BENT 6 REPAIRS - 2  
S.N. 082-6001 MLK BRIDGE OVER MISSISSIPPI RIVER

SHEET NO. S111 OF S138 SHEETS

F.A.P. RTE.	SECTION	COUNTY	TOTAL SHEETS	SHEET NO.
799	IBR, DRS-2	ST. CLAIR	156	129
CONTRACT NO. 76B03				
ILLINOIS FED. AID PROJECT				