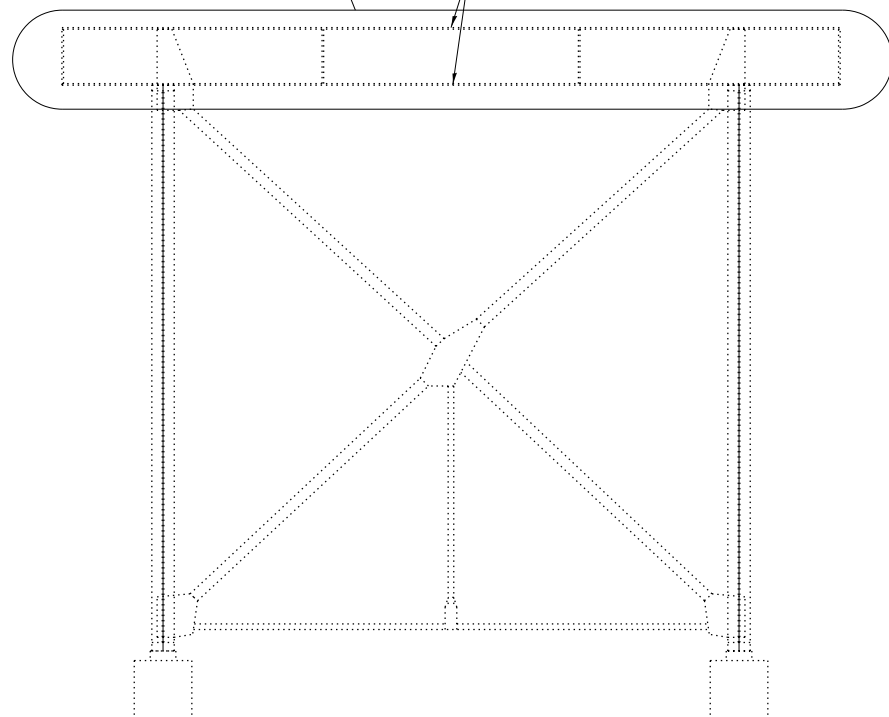


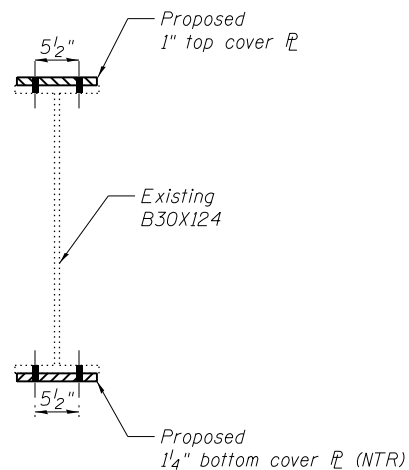
Strengthen Bent Cap
see Detail 1, this sheet.

Remove existing cover

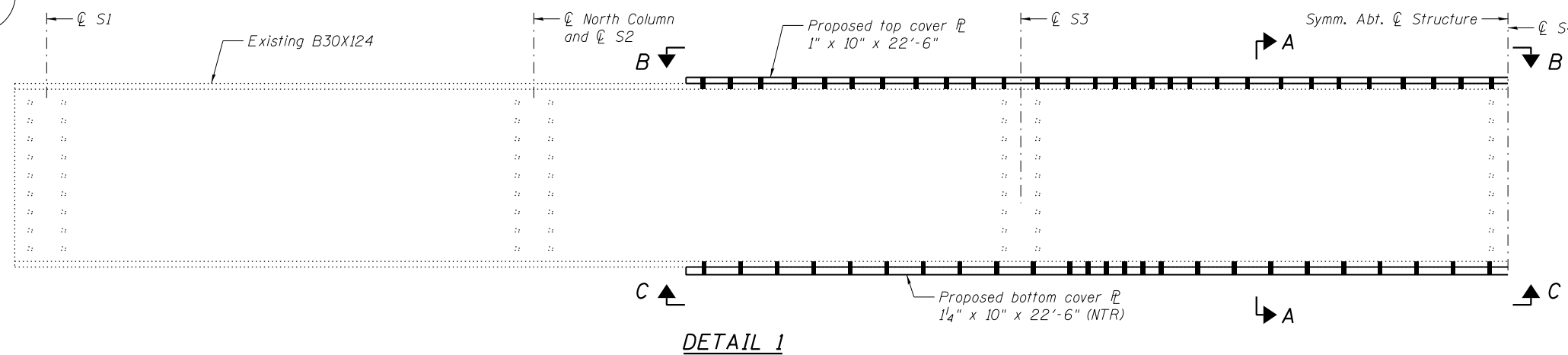


BENT 13
(Looking East)

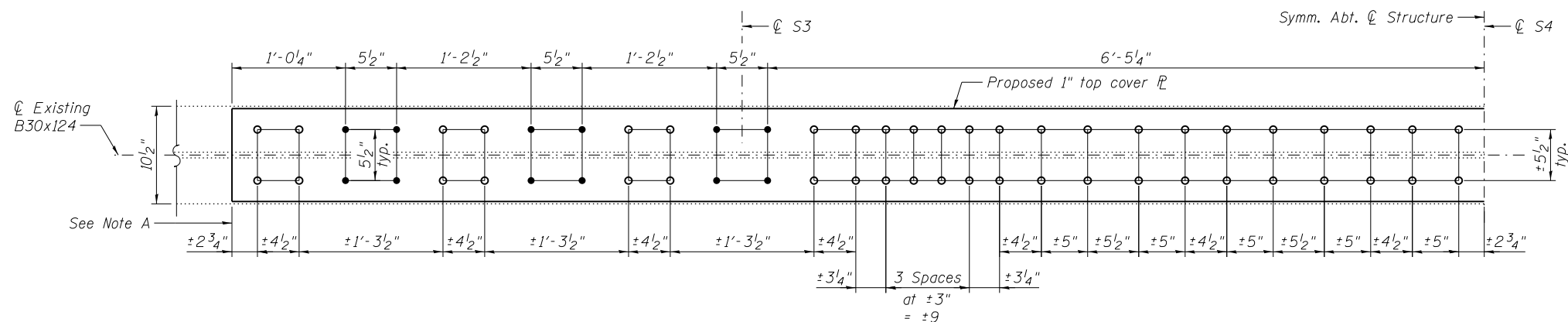
Procedure:
Remove and install top cover plate.
After top cover plate is installed, remove
and install bottom cover plate.



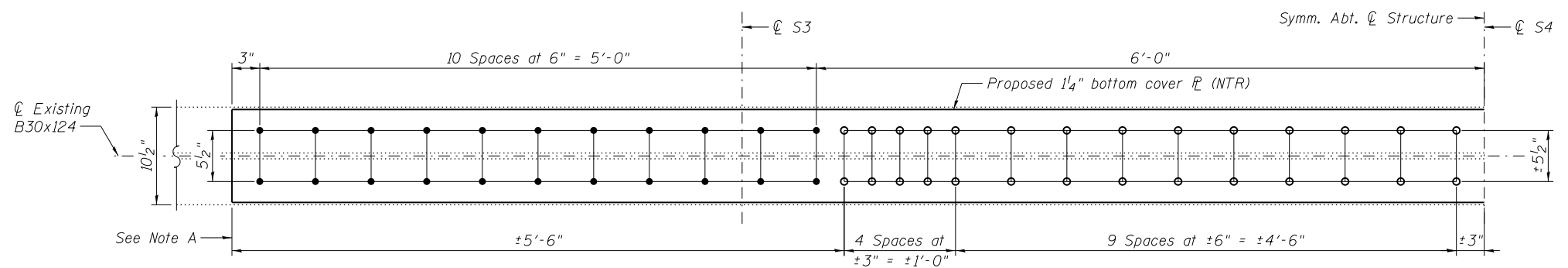
SECTION A-A



DETAIL 1



VIEW B-B



VIEW C-C

BILL OF MATERIAL

Item	Unit	Total
Structural Steel Repair	Pound	1,930

Note A:
Field drill holes using existing holes as template.
Remainder of holes may be shop or field drilled.

Note:
Load carrying components designated "NTR" shall conform
to the Impact Testing Requirement, Zone 2.



USER NAME =
DESIGNED - YSS
CHECKED - ZJB
PLOT SCALE =
DRAWN - AEC
PLOT DATE = 05/02/2014
CHECKED - YSS

DESIGNED - YSS
CHECKED - ZJB
DRAWN - AEC
CHECKED - YSS

REVISED
REVISED
REVISED
REVISED

STATE OF ILLINOIS
DEPARTMENT OF TRANSPORTATION

MISSOURI APPROACH BENT 13 REPAIRS
S.N. 082-6001 MLK BRIDGE OVER MISSISSIPPI RIVER

SHEET NO. S113 OF S138 SHEETS

F.A.P. RTE.	SECTION	COUNTY	TOTAL SHEETS	SHEET NO.
799	IBR, DRS-2	ST. CLAIR	156	131
CONTRACT NO. 76B03				
ILLINOIS FED. AID PROJECT				