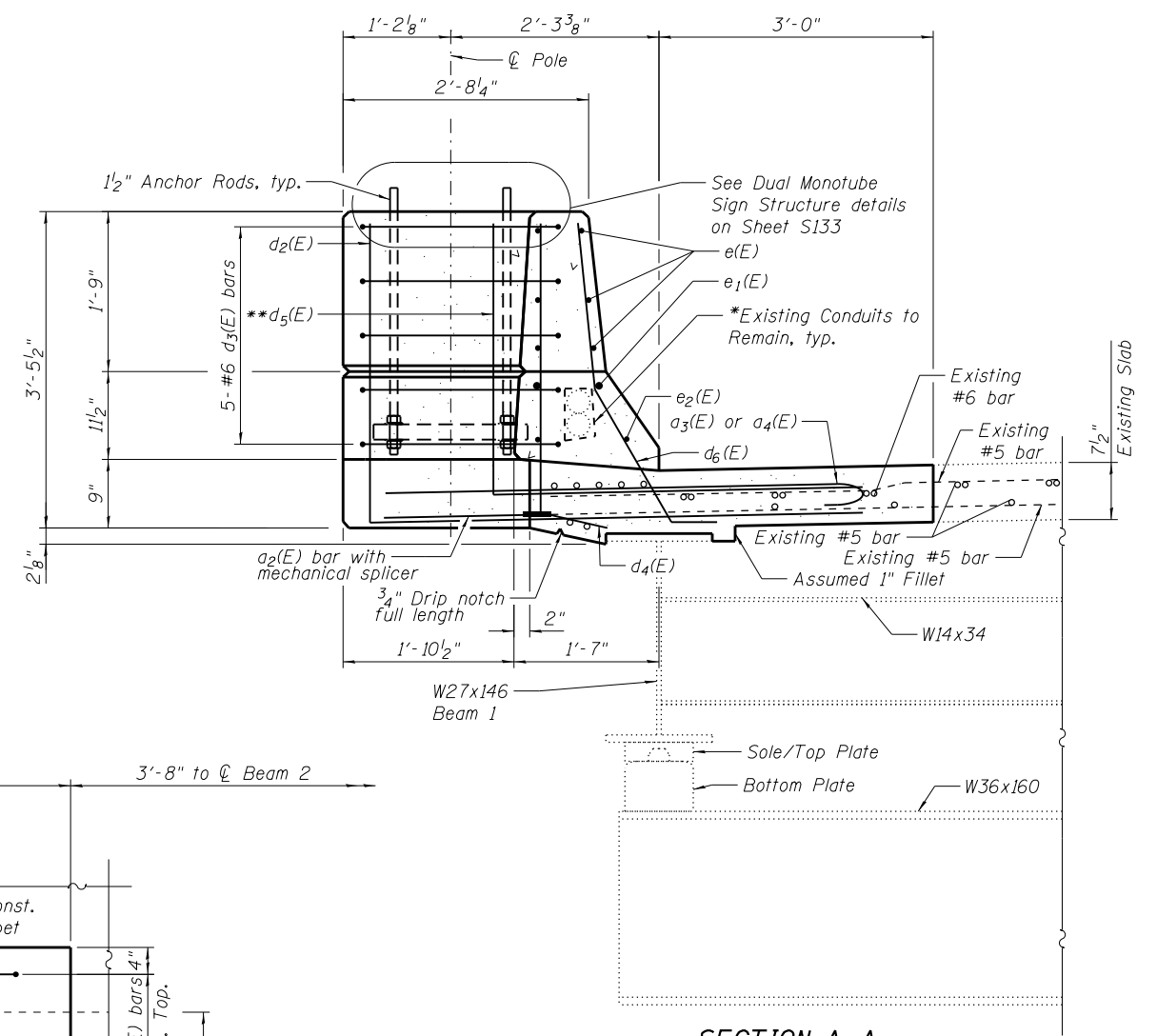


**INSIDE ELEVATION OF PARAPET**

\*Adjust bar locations as required to miss existing reinforcement and conduit. Maintain 1/2\"/>



**SECTION A-A**

**Design Notes:**

The foundations were designed to support 18\"/>

**DESIGN SPECIFICATIONS**

2002 AASHTO Standard Specification for Highway Bridges and the Manual for Bridge Evaluation, 2nd Edition, with 2011 and 2013 Interims  
 2001 AASHTO Standard Specifications for Structural Supports for Highway Signs, Luminaires and Traffic Signals with 2002, 2003, and 2006 Interims

**DESIGN STRESSES**

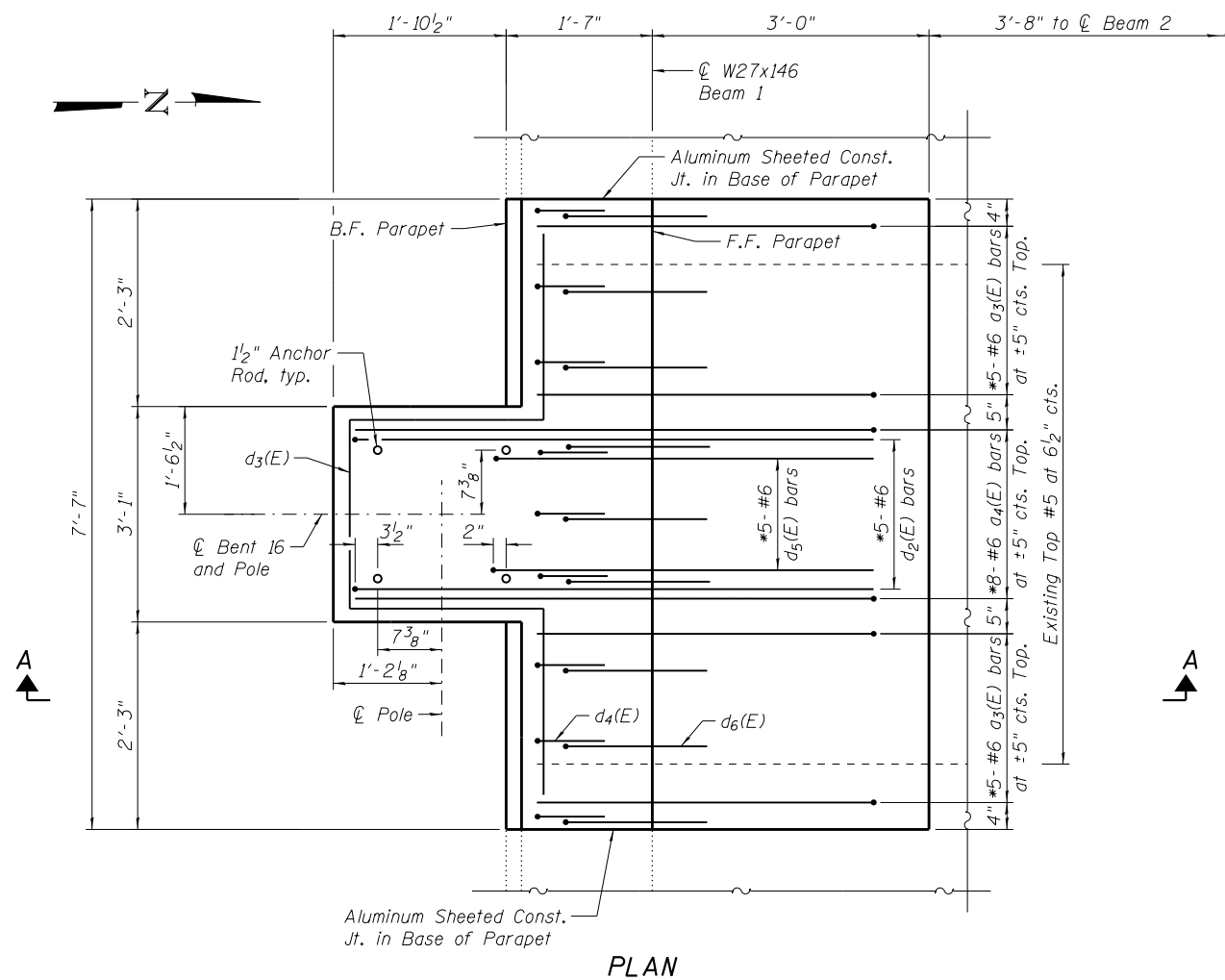
**FIELD UNITS**

f'c = 3,500 psi  
 fy = 60,000 psi (Reinforcement)  
 fy = 50,000 psi (Anchor Plate)

**EXISTING CONSTRUCTION**

**FIELD UNITS**

f'c = 3,500 psi  
 fy = 60,000 psi (Reinforcement)



**PLAN**

(Not showing Bottom bars or longitudinal bars in Deck for clarity)  
 (South Parapet Shown, North Parapet Similar)

**Notes:**

Cost of Anchor Rods included with Concrete Superstructure. See Sheet S136 for Anchor Rod Details.  
 All existing longitudinal bars in deck to remain in place. Minimum clearance to be 1/2\"/>

ANCHOR RODS: Shall conform to ASTM F1554 Grade 105.



USER NAME =	DESIGNED - RPW	REVISED -
FILE NAME =	CHECKED - LMS	REVISED -
PLOT SCALE =	DRAWN - AJF	REVISED -
PLOT DATE = 05/02/2014	CHECKED - LMS	REVISED -

**STATE OF ILLINOIS  
 DEPARTMENT OF TRANSPORTATION**

**FOUNDATION DETAILS 1  
 S.N. 082-6001 MLK BRIDGE OVER MISSISSIPPI RIVER**

SHEET NO. S135 OF S138 SHEETS

F.A.P. RTE.	SECTION	COUNTY	TOTAL SHEETS	SHEET NO.
799	IBR, DRS-2	ST. CLAIR	156	153
CONTRACT NO. 76B03				

ILLINOIS FED. AID PROJECT