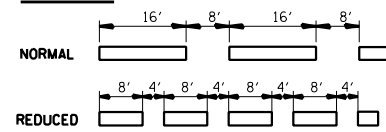


**NOTES**

1. PAINT CURB AND NOSE SOLID FOR 10 FEET OR RADIUS OF NOSE, WHICHEVER IS GREATER.
2. PAINT MINIMUM OF 3 STRIPES IN DIRECTION OF TRAFFIC.
3. REDUCED SPACING USED TO OBTAIN 3 STRIPS MINIMUM.
4. STRIPING RECOMMENDED ONLY WHERE OPERATIONAL PROBLEMS DICTATE.
5. PAINT SOLID WHERE A MINIMUM OF 3 STRIPES CANNOT BE PLACED.

**SPACING**



**PAIN T CURB**

**NOT TO SCALE**

FILE NAME = *FILEL*	USER NAME = *USER*	DESIGNED -	REVISED -	<b>STATE OF ILLINOIS DEPARTMENT OF TRANSPORTATION</b>	<b>DETAIL SHEET</b>				F.A. RTE.	SECTION	COUNTY	TOTAL SHEETS	SHEET NO.	
	PLOT SCALE = *SCALE*	DRAWN -	REVISED -		SCALE:	SHEET	OF	SHEETS	STA.	TO STA.	*	6-3N-1	73	73
*MODELNAME*	PLOT DATE = *DATE*	CHECKED -	REVISED -		<b>CONTRACT NO. 76F41</b>									
		DATE -	REVISED -		ILLINOIS FED. AID PROJECT									