

STATE OF ILLINOIS
DEPARTMENT OF TRANSPORTATION
DIVISION OF HIGHWAYS
PROPOSED
HIGHWAY PLANS

F.A.I. RTE.	SECTION	COUNTY	TOTAL SHEETS	SHEET NO.
270	DIST 8 ITS 2014-2	MADISON	37	1
FED. ROAD DIST. NO.	ILLINOIS	CONTRACT NO. 76G95		

D-98-021-14

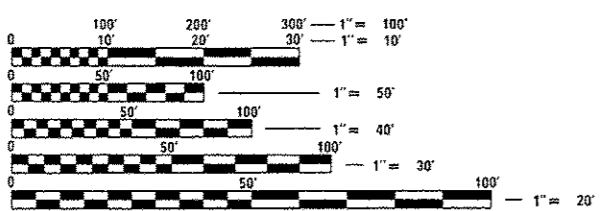


LOCATION OF SECTION INDICATED THUS: - [black rectangle] -

FAI ROUTE 270 (I-270)
SECTION DIST 8 ITS 2014-2
PROJECT ACCM - 0270 (403)
MADISON COUNTY
ITS SURVEILLANCE DEVICES AND
FIBER OPTIC COMMUNICATION CONVERSION
ALONG I-270 FROM 0.8 MI W OF IL 157
TO 0.8 MI E OF IL 159
C-98-021-14

- INDEX OF SHEETS
1. COVER SHEET
 2. GENERAL NOTES AND LEGEND
 - 3.-4. SUMMARY OF QUANTITIES
 5. ITS POLE LOCATION MAP
 6. TRAFFIC DATA SCHEDULE, LANE RESTRICTIONS SCHEDULE AND TRAFFIC CONTROL AND PROTECTION SCHEDULE
 7. POLE MOUNTED CCTV DETAIL WITH CAMERA LOWERING DEVICE
 8. CCTV AND RADAR VEHICLE DETECTION MOUNTING DETAIL
 - 9.-19. ITS PLANS 1A - 11A OF 11
 - 20.&21. CONDUIT ATTACHED TO STRUCTURE
 - 22.-32. EROSION CONTROL PLANS 1A - 11A OF 11
 33. FIBER NETWORK DETAIL
 34. FIBER TERM-SPL SUMMARY & OPTICAL EQUIPMENT SCHEDULE
 - 35.-37. COMMUNICATION SHEETS

- STANDARDS
- 701101-04 701106-02 701400-07
 - 701401-08 701406-08 701411-08
 - 701428 701456-03 701501-06
 - 701601-09 701901-03 814001-02

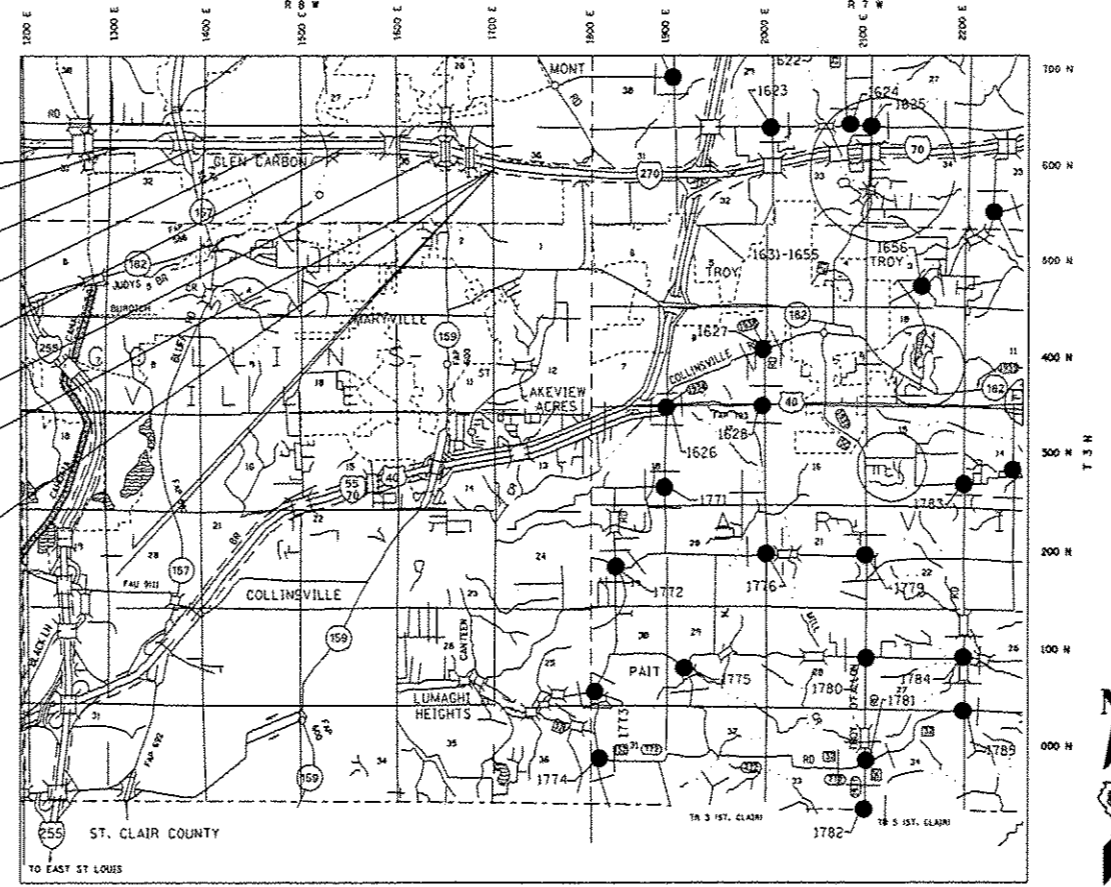


FULL SIZE PLANS HAVE BEEN PREPARED USING STANDARD ENGINEERING SCALES. REDUCED SIZED PLANS WILL NOT CONFORM TO STANDARD SCALES. IN MAKING MEASUREMENTS ON REDUCED PLANS, THE ABOVE SCALES MAY BE USED.

J.U.L.I.E.
 JOINT UTILITY LOCATION INFORMATION FOR EXCAVATION
 1-800-892-0123
 OR 811

PROJECT ENGINEER: PATTI LeBEAU (618)-346-3179
SQUAD LEADER: MICHAEL PRESTON (618) 346-3143
LIAISON ENGINEER: LINDA LEONARD (618) 346-3285
CONTRACT NO. 76G95

PROJECT BEGINS
I-270 STA. 528 + 00
 027008.4W.035
 STA. 528+00
 027009.0A.76D
 STA. 571+45
 027009.9A.77D
 STA. 618+80
 027010.8A.78D
 STA. 667+50
 027012.0A.79D
 STA. 716+20
 027012.6A.80D
 STA. 758+00
PROJECT ENDS
I-270 STA. 758 + 00



PROJECT LENGTH: 4.35 MILES
 LAYOUT
 0 MI 1 MI 2 MI 3 MI
 1" = 1 MILE

STATE OF ILLINOIS
 DEPARTMENT OF TRANSPORTATION
 DIVISION OF HIGHWAYS

SUBMITTED *Mar 19 20 14*
Jeffrey Z. Keenan
 DEPUTY DIRECTOR OF HIGHWAYS, REGION 5 ENGINEER
May 9 20 14
John D. Baranzelli, PE, Jr
 ENGINEER OF DESIGN AND ENVIRONMENT
May 9 20 14
Omer Osman, PE, Jr
 DIRECTOR OF HIGHWAYS, CHIEF ENGINEER

PRINTED BY THE AUTHORITY
OF THE STATE OF ILLINOIS

PLOT DATE = 2/19/2014
 FILE NAME = G:\New Work\pilot\pilot.dwg
 PLOT SCALE = 1/8"=1'-0"
 REFERENCE = NONE