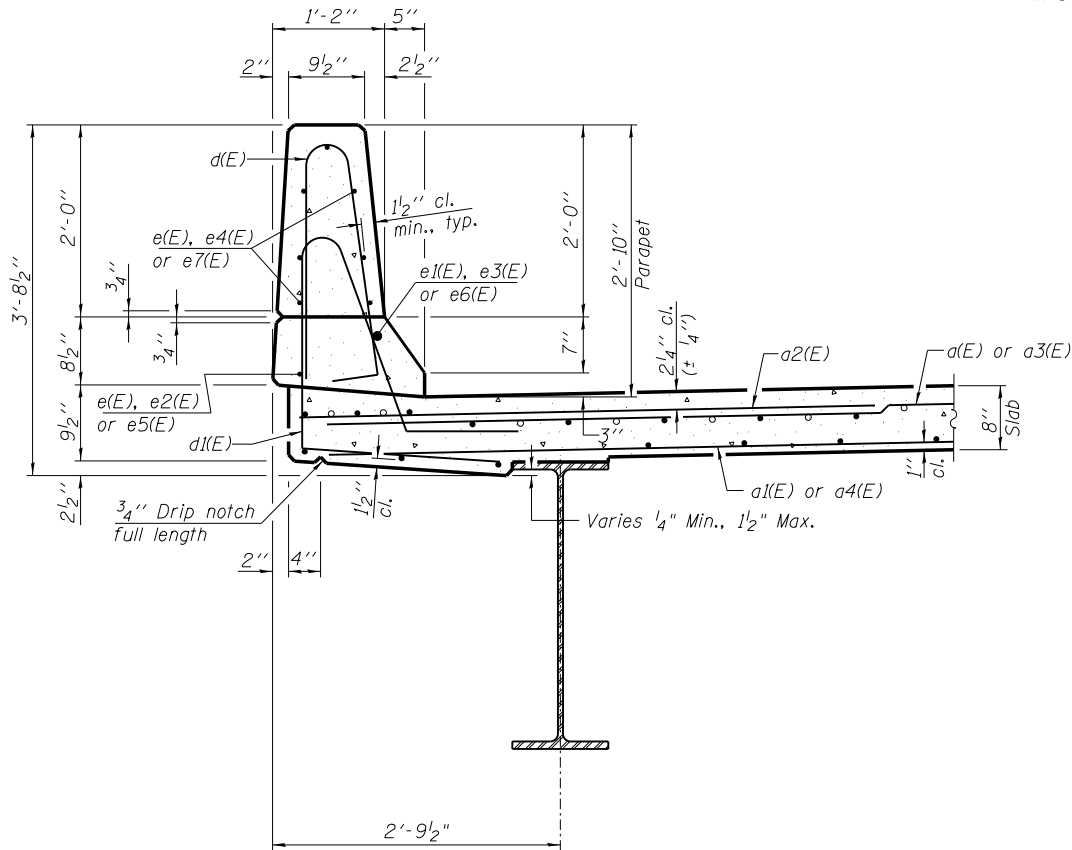
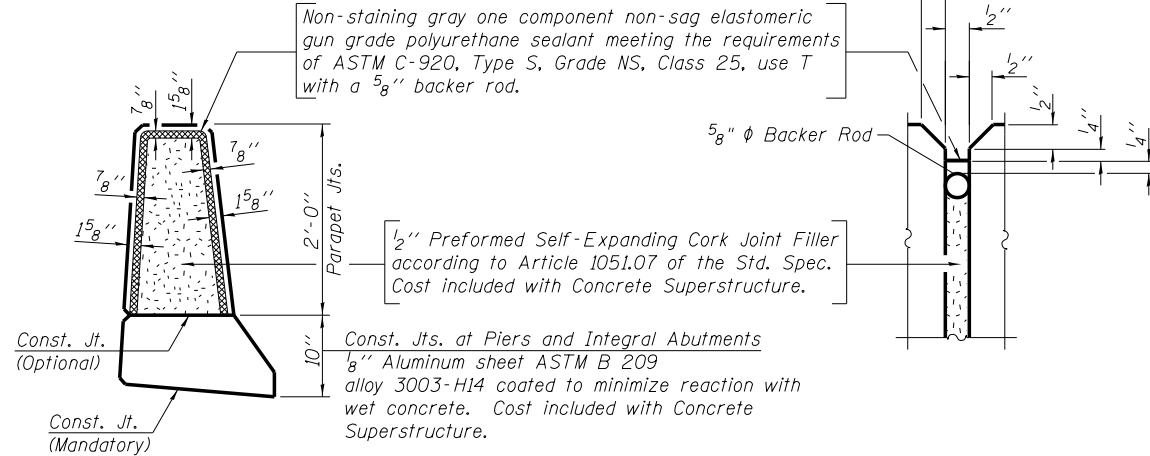


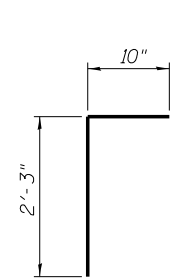
INSIDE ELEVATION OF PARAPET



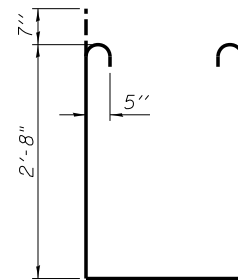
SECTION THRU PARAPET



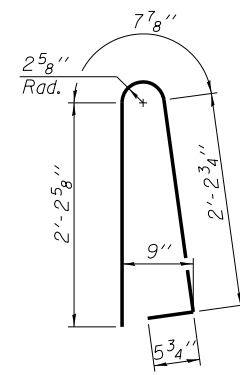
PARAPET JOINT DETAILS



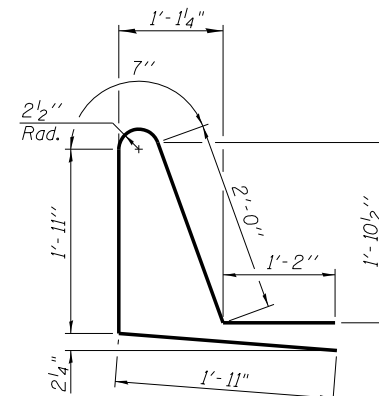
BAR v(E)



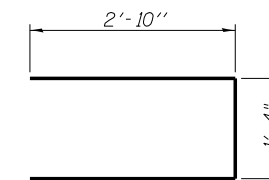
BAR s1(E)



BAR d(E)



BAR d1(E)



BAR s(E)

**SUPERSTRUCTURE
BILL OF MATERIAL**

Bar	No.	Size	Length	Shape
a(E)	233	#5	16'-7"	—
a1(E)	163	#5	15'-11"	—
a2(E)	466	#6	6'-6"	—
a3(E)	233	#5	17'-7"	—
a4(E)	163	#5	16'-11"	—
b(E)	319	#5	29'-8"	—
b1(E)	70	#6	31'-6"	—
b2(E)	62	#5	16'-4"	—
d(E)	296	#5	5'-7"	⌋
d1(E)	296	#5	7'-7"	⌋
e(E)	64	#4	7'-8"	—
e1(E)	8	#8	7'-8"	—
e2(E)	4	#4	28'-4"	—
e3(E)	4	#8	28'-4"	—
e4(E)	56	#4	14'-0"	—
e5(E)	4	#4	23'-10"	—
e6(E)	4	#8	25'-5"	—
e7(E)	42	#4	15'-0"	—
m(E)	4	#6	18'-6"	—
m1(E)	4	#6	17'-9"	—
m2(E)	24	#6	5'-6"	—
m3(E)	36	#5	4'-0"	—
m4(E)	9	#6	3'-5"	—
m5(E)	3	#6	4'-2"	—
m6(E)	6	#6	2'-1"	—
m7(E)	6	#6	3'-1"	—
m8(E)	8	#6	18'-9"	—
s(E)	77	#5	7'-0"	⌋
s1(E)	77	#5	8'-6"	⌋
v(E)	76	#5	3'-1"	⌋
Reinforcement Bars, Epoxy Coated		Pound	41280	
Concrete Superstructure		Cu. Yds.	191.2	

Bars indicated thus 1 x 3 - #5 etc. indicates 1 line of bars with 3 lengths per line.

MINIMUM BAR LAP

#4 bar = 2'-0"
#8 bar = 5'-2"

c:\working\dms24893\0978279-st-bridge.dgn



USER NAME = dwd01573	DESIGNED - JGT	REVISED -
PLOT SCALE =	CHECKED - TEH	REVISED -
PLOT DATE = 03/01/2014 10:50:29 AM	DRAWN - DAP	REVISED -
	CHECKED - JGT	REVISED -

STATE OF ILLINOIS
DEPARTMENT OF TRANSPORTATION

SUPERSTRUCTURE DETAILS
STRUCTURE NO. 044-0061

SHEET NO. 13 OF 29 SHEETS

F.A.P. RTE.	SECTION	COUNTY	TOTAL SHEETS	SHEET NO.
885	110B-1	JOHNSON	52	36
CONTRACT NO. 78279				

ILLINOIS FED. AID PROJECT