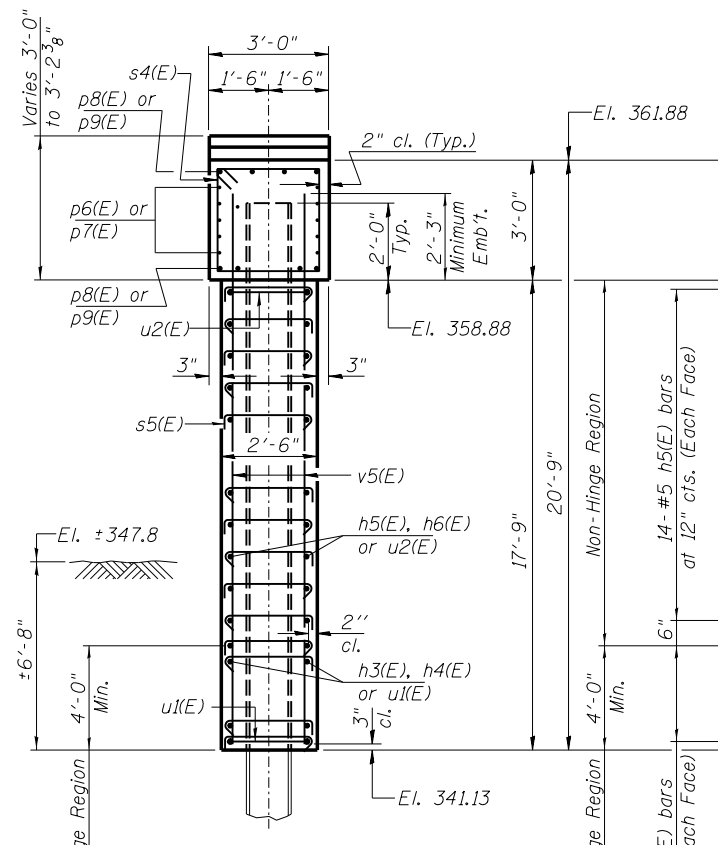
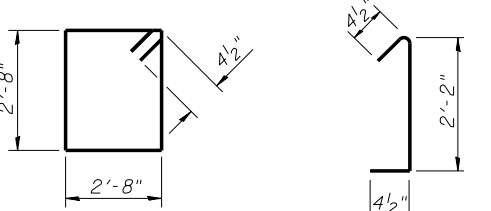
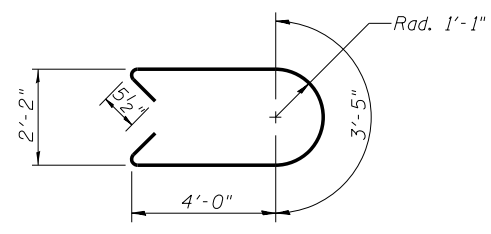
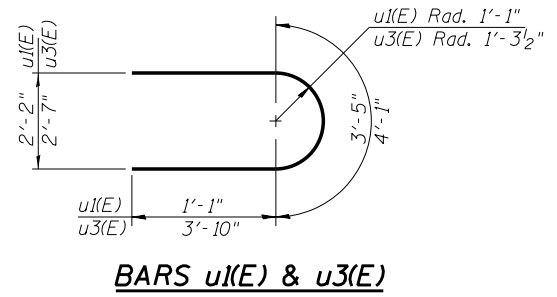
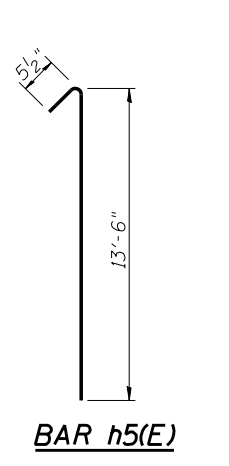
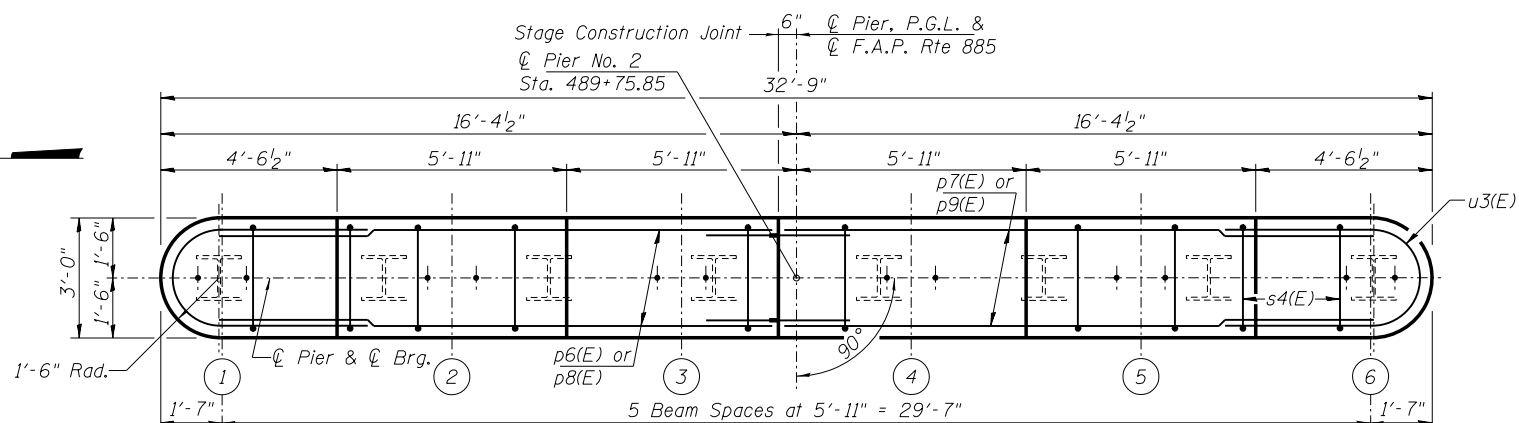
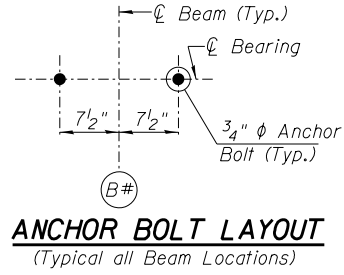
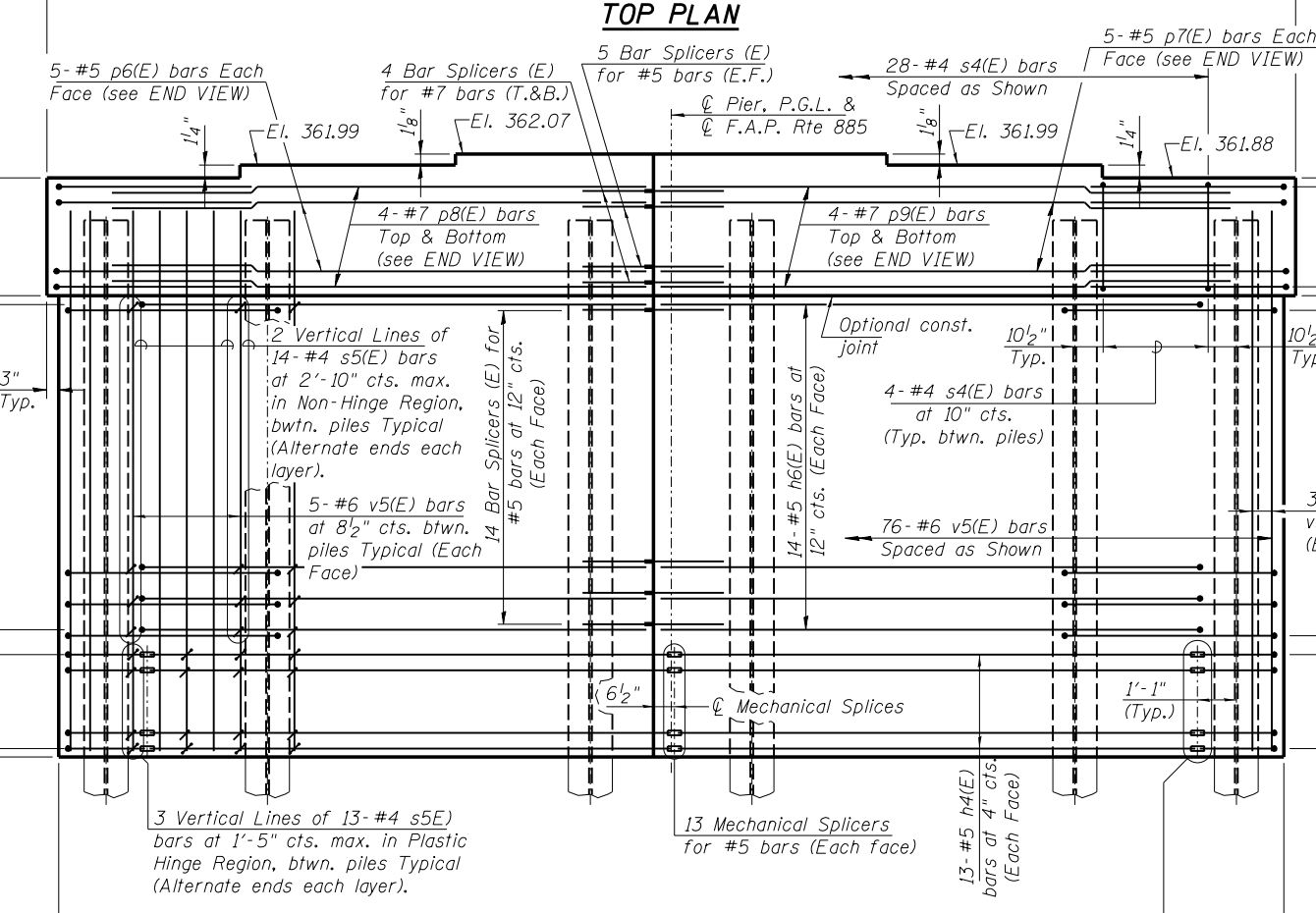


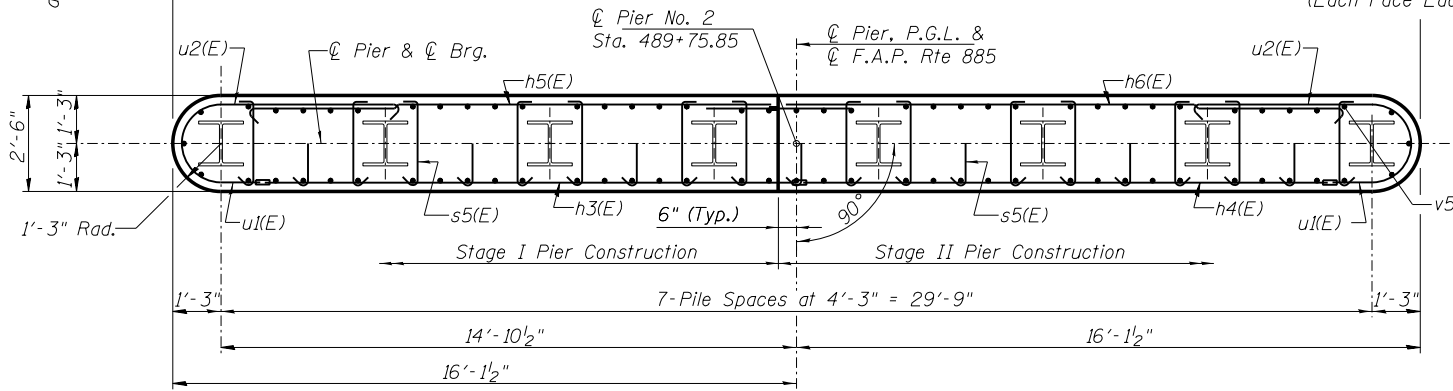
Notes:
 Space reinforcement in cap to miss anchor bolts.
 Pour steps monolithically with cap.
 For details of piles, See Sheet 25 of 29.
 For Stage Construction Details, See Sheets 4 & 5 of 29.



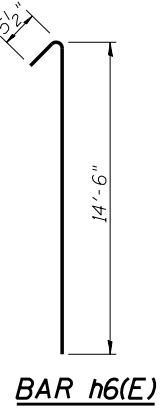
END VIEW



ELEVATION (Looking East)



PLAN



PILE DATA

Type: HP 14x89
 Nominal Required Bearing: 705 kips
 Factored Resistance Available: 388 kips
 Factored Resistance Available During an Extreme Event I: 705 kips
 Est. Length: 49 Feet
 No. Production Piles: 8
 No. Test Piles: 0
 Est. Top of Rock Elevation: 324.0
 Rock Socket Depth: 12 Feet
 Rock Socket Diameter: 2 Feet

BILL OF MATERIAL (Pier 2)

Bar	No.	Size	Length	Shape
h3(E)	26	#5	13'-10"	—
h4(E)	26	#5	13'-9"	—
h5(E)	28	#5	14'-0"	—
h6(E)	28	#5	15'-0"	—
p6(E)	10	#5	14'-3"	—
p7(E)	10	#5	15'-3"	—
p8(E)	8	#7	14'-3"	—
p9(E)	8	#7	15'-3"	—
s4(E)	28	#4	11'-5"	□
s5(E)	469	#4	2'-11"	┌┐
u1(E)	26	#5	5'-7"	U
u2(E)	28	#5	12'-4"	U
u3(E)	14	#6	11'-9"	U
v5(E)	76	#6	19'-11"	—
Cofferdam Excavation		Cu. Yd.	105	
Concrete Structures		Cu. Yd.	63.2	
Reinforcement Bars, Epoxy Coated		Pound	6540	
Furnishing Steel Piles, HP 14x89		Foot	392	
Setting Piles in Rock		Each	8	

c:\working\dms24893\0978279-st-bridge.dgn

PROFESSIONAL DESIGN FIRM LICENSE #184-001084 © Copyright Hanson Professional Services Inc. 2014	USER NAME = dwd01573	DESIGNED - JGT	REVISIONS -
	PLOT SCALE =	CHECKED - TEH	REVISIONS -
	PLOT DATE = 03/01/2014 10:50:35 AM	DRAWN - Rod	REVISIONS -
		CHECKED - JGT	REVISIONS -

STATE OF ILLINOIS
 DEPARTMENT OF TRANSPORTATION

PIER NUMBER 2
 STRUCTURE NO. 044-0061

SHEET NO. 24 OF 29 SHEETS

F.A.P. RTE. 885	SECTION 110B-1	COUNTY JOHNSON	TOTAL SHEETS 52	SHEET NO. 47
CONTRACT NO. 78279			ILLINOIS FED. AID PROJECT	