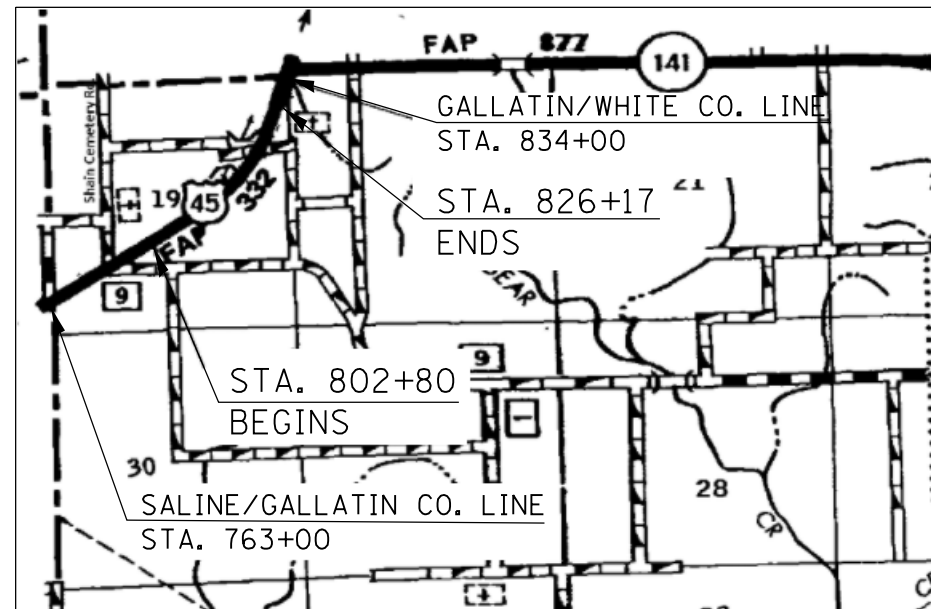
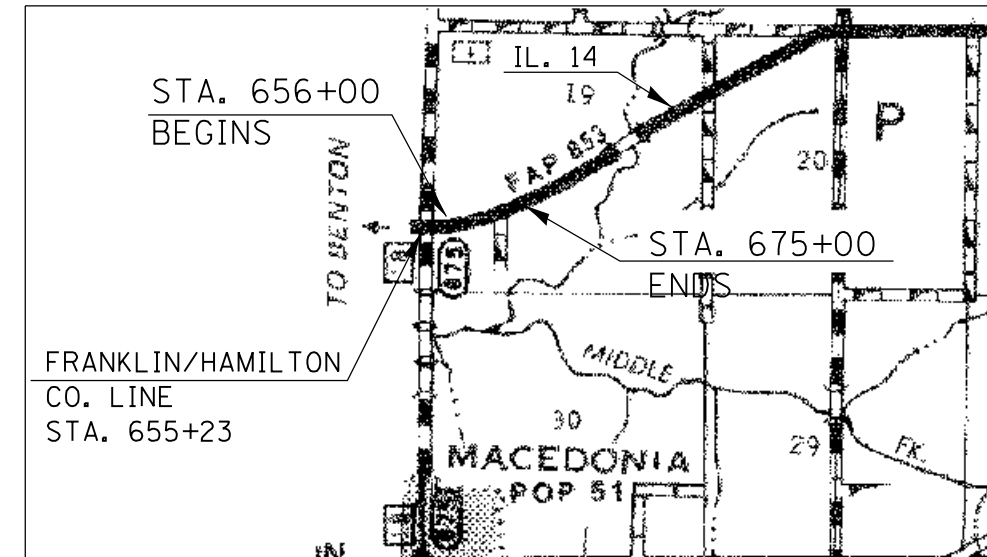


LOCATION 1
US 45 IN GALLATIN CO.
SOUTH OF IL 141



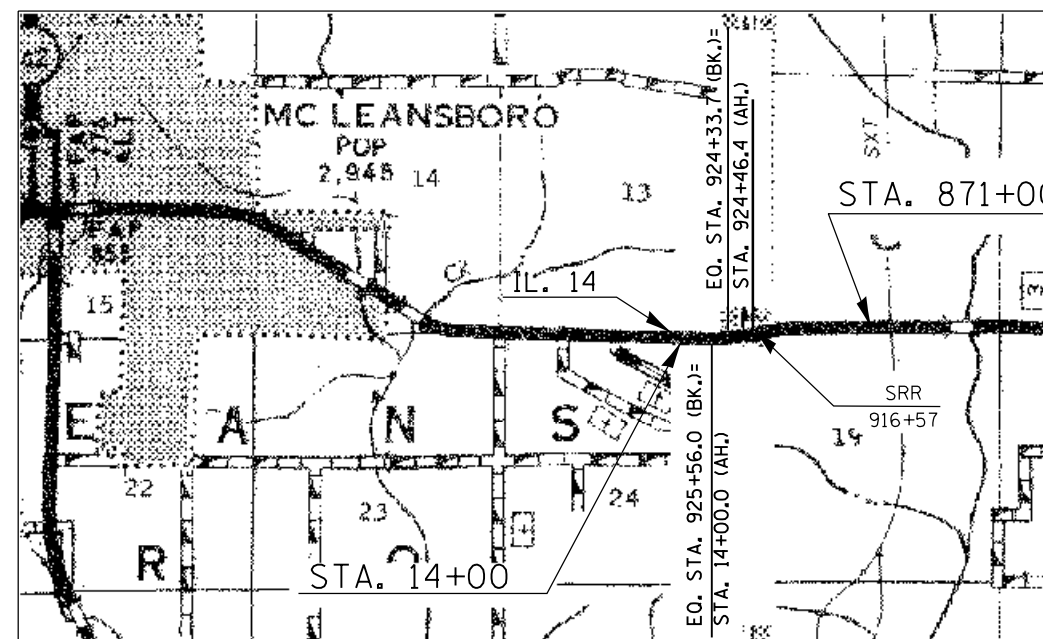
PAY ITEMS:
3' HMA SHOULDERS, 8"
SHOULDER RUMBLE STRIPS, 8 INCH
CHERVRON SIGNS
HIGH FRICTION SURFACE TREATMENT

LOCATION 2
IL. 14 IN HAMILTON CO.
EAST OF FRANKLIN CO. LINE



PAY ITEMS:
4' HMA SHOUDERS, 8"
SHOULDER RUMBLE STRIPS, 8 INCH
CHERVRON SIGNS

LOCATION 3
IL. 14 IN HAMILTON CO.
EAST OF MCLEANSBORO



PAY ITEMS:
4' HMA SHOULDER, 8"
SHOULDER RUMBLE STRIPS, 8 INCH
CHEVRON WARNING SIGNS

FILE NAME =	USER NAME = mccordkr	DESIGNED -	REVISED -
et:\pw\work\p\dot\mccordkr\0371602\78396-sh1-plan.dgn		DRAWN -	REVISED -
Default	PLOT SCALE = 100.0000' / in.	CHECKED -	REVISED -
	PLOT DATE = 3/20/2014	DATE -	REVISED -

STATE OF ILLINOIS
DEPARTMENT OF TRANSPORTATION

LOCATION MAPS -
SHEET 1

SCALE: SHEET OF SHEETS STA. TO STA.

F.A. RTE.	SECTION	COUNTY	TOTAL SHEETS	SHEET NO.
	D9 SAFETY 2014-2	**	17	12
			CONTRACT NO. 78396	
ILLINOIS FED. AID PROJECT				

• VARIOUS ROUTES
•• VARIOUS COUNTIES