

STATE OF ILLINOIS
DEPARTMENT OF TRANSPORTATION
DIVISION OF HIGHWAYS

**PROPOSED
HIGHWAY PLANS**

VARIOUS ROUTES
SECTION D9 SAFETY 2014-2
PROJECT ACHSIP-0005(994)
CURVE SAFETY IMPROVEMENTS
VARIOUS COUNTIES

C-99-020-14

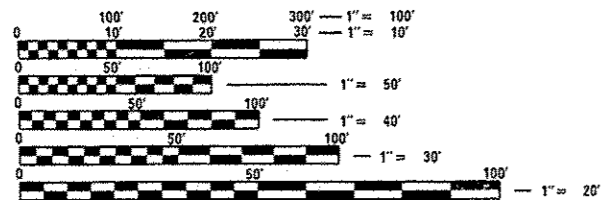
| F.A. RTE. | SECTION | COUNTY | TOTAL SHEETS | SHEET NO. |
|-----------|------------------|----------|--------------------|-----------|
| * | D9 SAFETY 2014-2 | ** | 17 | 1 |
| | | ILLINOIS | CONTRACT NO. 78396 | |

• VARIOUS ROUTES
•• VARIOUS COUNTIES

FOR INDEX OF SHEETS, SEE SHEET NO. 3

TOWNSHIPS & PRECINCTS:
Precincts - Crab Orchard, East Rosiclare
Townships - Shiloh, Benton, McClellan,
Knight Prairie, McLeansboro, Omaha.

FOR EQUATION STATIONS, SEE
LOCATION MAPS, SHEETS 11 - 13.

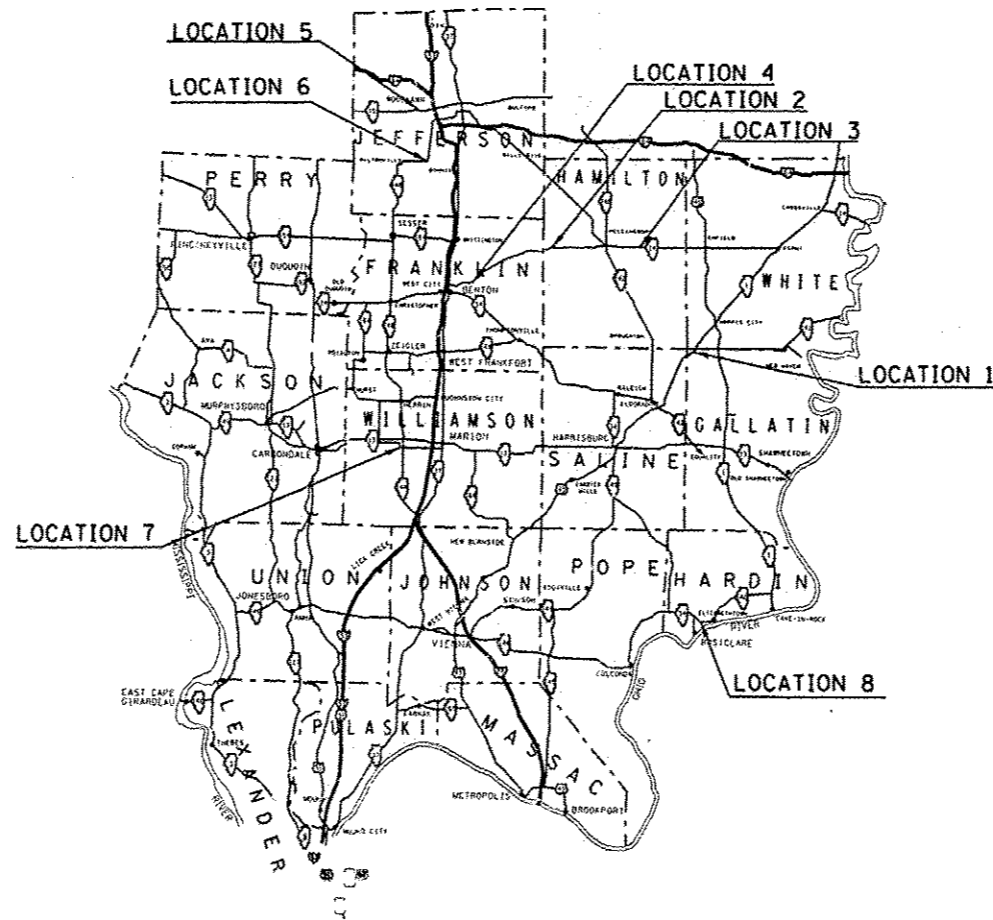


FULL SIZE PLANS HAVE BEEN PREPARED USING STANDARD
ENGINEERING SCALES. REDUCED SIZED PLANS WILL NOT
CONFORM TO STANDARD SCALES. IN MAKING MEASUREMENTS
ON REDUCED PLANS, THE ABOVE SCALES MAY BE USED.

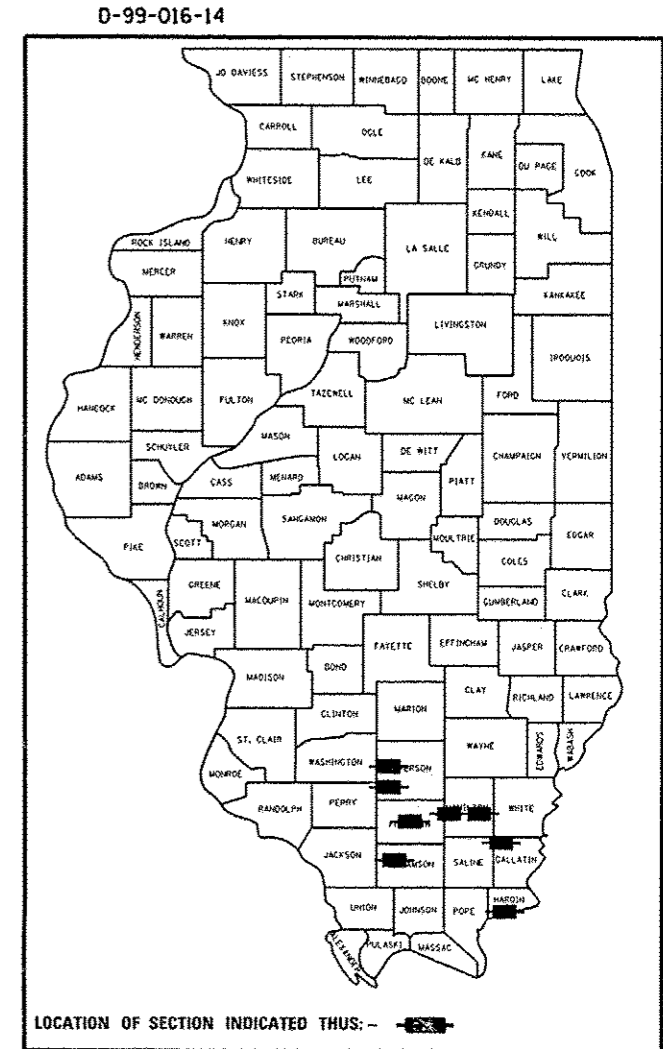
J.U.L.I.E.
JOINT UTILITY LOCATION INFORMATION FOR EXCAVATION
1-800-892-0123
OR 811

PROJECT ENGINEER - Charles Stein (618) 351-5210
PROJECT MANAGER - Kathi McCord (618) 351-5319

CONTRACT NO. 78396



GROSS LENGTH = 47,758 FT. = 9.04 MILE
NET LENGTH = 47,447 FT. = 8.98 MILE



LOCATION OF SECTION INDICATED THUS: - [shaded area symbol]

STATE OF ILLINOIS
DEPARTMENT OF TRANSPORTATION
DIVISION OF HIGHWAYS

SUBMITTED March 18 20 14

Jeffrey D. Keen
DEPUTY DIRECTOR OF HIGHWAYS, REGION ENGINEER

May 9 20 14
John D. Baranzelli P.E.
ENGINEER OF DESIGN AND ENVIRONMENT

May 9 20 14
Omur Osman P.E.
DIRECTOR OF HIGHWAYS, CHIEF ENGINEER

PRINTED BY THE AUTHORITY
OF THE STATE OF ILLINOIS

Prepared By: *Joe Blankiewicz*
DISTRICT STUDIES & PLANS ENGINEER

Examined By: *[Signature]*
DISTRICT LAND ACQUISITION ENGINEER

Examined By: *Carrie Nelson*
DISTRICT PROGRAM DEVELOPMENT ENGINEER

Examined By: *Karl Wiley*
DISTRICT OPERATIONS ENGINEER

Examined By: *KR [Signature]*
DISTRICT PROJECT IMPLEMENTATION ENGINEER

Examined By: *Daryl J. [Signature]*
DISTRICT CONSTRUCTION ENGINEER

Examined By: *Bruce W. [Signature]*
DISTRICT MATERIALS ENGINEER

• VARIOUS ROUTES
•• VARIOUS COUNTIES

| | | | | | | | | | | | |
|--|------------------------------|------------------|-----------------|---|---|--|--------------------|---------|--------|--------------|-----------|
| FILE NAME * | USER NAME * mccordkr | DESIGNED - _____ | REVISED - _____ | STATE OF ILLINOIS DEPARTMENT OF TRANSPORTATION | SIGNATURE SHEET | | F.A. RTE. | SECTION | COUNTY | TOTAL SHEETS | SHEET NO. |
| c:\pwwork\pwwork\mccordkr\0371602\78318-sh1-plon.dgn | DRAWN - _____ | REVISED - _____ | • | | | | 09 SAFETY 2014-2 | ** | 17 | 2 | |
| *MODELNAME* | PLOT SCALE = 100.0000 / 1" = | CHECKED - _____ | REVISED - _____ | | SCALE: _____ SHEET _____ OF _____ SHEETS STA. _____ TO STA. _____ | | CONTRACT NO. 78396 | | | | |
| | PLOT DATE = 2/19/2014 | DATE - _____ | REVISED - _____ | | ILLINOIS FED. AID PROJECT | | | | | | |

INDEX OF SHEETS

| SHEET NO. | DESCRIPTION |
|-----------|--|
| 1 | COVER SHEET |
| 2 | SIGNATURE SHEET |
| 3 | INDEX OF SHEETS, STANDARDS |
| | GENERAL NOTES, MIXTURE REQUIREMENTS |
| 4 - 5 | SUMMARY OF QUANTITIES |
| 6 | TYPICAL SECTION |
| 7 - 10 | SCHEDULES OF QUANTITIES |
| 11 | LOCATION MAP OF PROJECTS |
| 12 - 14 | INDIVIDUAL LOCATION MAPS & EQUATION STATIONS |
| 15 | DETAIL: ENTRANCE & SIDE ROAD DETAIL |
| 16 - 17 | DETAIL: GUARDRAIL REMOVAL AND REPLACEMENT |

STANDARDS

| | |
|-----------|---|
| 000001-06 | STANDARD SYMBOLS, ABBREVIATIONS, AND PATTERNS |
| 482001-02 | HMA SHOULDER ADJACENT TO FLEXIBLE PAVEMENT |
| 630001-10 | STEEL PLATE BEAM GUARDRAIL |
| 630201-06 | PCC/HMA STABILIZATION AT STEEL PLATE BEAM GUARDRAIL |
| 630301-06 | SHOULDER WIDENING FOR TYPE 1 (SPECIAL) GUARDRAIL TERMINALS |
| 635006-03 | REFLECTOR AND TERMINAL MARKER PLACEMENT |
| 635011-02 | REFLECTOR MARKER AND MOUNTING DETAILS |
| 642006 | SHOULDER RUMBLE STRIPS, 8 IN. |
| 701001-02 | OFF-ROAD OPERATIONS, 2L, 2W, MORE THAN 15' AWAY |
| 701006-05 | OFF-ROAD OPERATIONS, 2L, 2W, 15' TO 24" FROM PAVEMENT EDGE |
| 701011-04 | OFF-ROAD MOVING OPERATIONS, 2L, 2W, DAY ONLY |
| 701301-04 | LANE CLOSURE, 2L, 2W, SHORT TIME OPERATIONS |
| 701306-03 | LANE CLOSURE, 2L, 2W, SLOW MOVING OPERATIONS, DAY ONLY FOR SPEEDS \geq 45 MPH |
| 701326-04 | LANE CLOSURE, 2L, 2W, PAVEMENT WIDENING, FOR SPEEDS \geq 45 MPH |
| 701901-03 | TRAFFIC CONTROL DEVICES |
| 720001-01 | SIGN PANEL MOUNTING DETAILS |
| 720006-04 | SIGN PANEL ERECTION DETAILS |
| 720011-01 | METAL POSTS FOR SIGNS, MARKERS AND DELINEATORS |
| 729001-01 | APPLICATIONS OF TYPE A AND B METAL POSTS |

GENERAL NOTES

FACTORS USED FOR ESTIMATING PLAN QUANTITIES ARE AS FOLLOWS AND SHALL NOT BE USED FOR THE BASIS OF FINAL QUANTITIES:

| | |
|----------------------------|--------------------|
| ALL HOT-MIX ASPHALT | 2.016 TONS/CU. YD. |
| ALL AGGREGATE | 2.05 TONS/CU. YD. |
| BITUMINOUS MATERIALS: | |
| ON SHOULDER (TOP LAYER) | 0.05 LBS./SQ. FT. |
| ON SHOULDER (BOTTOM LAYER) | 0.025 LBS./SQ. FT. |
| | |
| RIPRAP | 1.50 TONS/CU. YD. |

THE ALGEBRAIC DIFFERENCE BETWEEN THE PAVEMENT AND SHOULDER SLOPES SHALL NOT EXCEED 8%. THE SHOULDER ON THE OUTSIDE OF SUPERELEVATED CURVES SHALL BE FLATTENED ACCORDINGLY.

THERE ARE NO AVAILABLE WASTE SITES ON THE EXISTING RIGHT OF WAY WITHIN THE PROJECT LIMITS. DISPOSAL WILL BE THE RESPONSIBILITY OF THE CONTRACTOR AND WASTE MUST BE DISPOSED OF IN ACCORDANCE WITH ARTICLE 202.03 OF THE STANDARD SPECIFICATIONS.

STATIONING SHOWN IN THE SCHEDULES IS BASED ON STAMPED STATIONS IN THE EXISTING PAVEMENT AND FROM OLD PLANS. MINOR ADJUSTMENTS MAY BE REQUIRED AS DIRECTED BY THE ENGINEER.

THE EXCAVATED AGGREGATE/EARTH FOR THE PROPOSED SHOULDER SHALL BE WASTED ON THE SHOULDER AND GRADED BACK TO THE EDGE OF THE PROPOSED SHOULDER. DO NOT PLACE WASTE MATERIAL ONTO EXISTING ENTRANCES, SIDE ROADS, OR ON MAINTAINED LAWNS. THE GRADING OF THE WASTE MATERIAL WILL BE PAID FOR AS GRADING AND SHAPING FORESLOPES.

THE HMA SHOULDER SHALL BE 3' OR 4' WIDE AS SHOWN ON THE HMA SHOULDER SCHEDULE. THE SHOULDER SHALL BE AS WIDE AS POSSIBLE THROUGHOUT EACH LOCATION EXCEPT IN LOCATIONS THAT THE EXISTING SHOULDER IS NOT WIDE ENOUGH TO SUSTAIN. IN THESE LOCATIONS THE SHOULDER SHALL BE A MINIMUM OF 2' WIDE. THESE LOCATIONS SHALL BE DETERMINED BY THE ENGINEER. NO EXTRA COMPENSATION WILL BE GIVEN FOR THE VARYING WIDTH. THE HMA SHOULDER WILL BE PAID FOR BY THE SQUARE YARD.

AT LOCATIONS WHERE EXISTING GUTTER OUTLETS ARE NO LONGER IN USE, THEY SHALL BE FILLED WITH THE NEW HMA SHOULDER AND LEFT AS IS. AT LOCATIONS WHERE EXISTING V-GUTTER IS FILLED, BUT TOP LIP IS STILL VISIBLE, IT SHALL BE GROUND OFF AND THE NEW HMA SHOULDER SHALL BE PLACED BEHIND IT AS SHOWN ON THE TYPICALS AND AS DIRECTED BY THE ENGINEER. THE COST OF GRINDING OFF ANY EXISTING V-GUTTER LIP SHALL BE INCLUDED IN THE HMA SHOULDERS, 8".

MIXTURE REQUIREMENTS

| | |
|---|--------------------------------|
| LOCATION(S): | HOT-MIX ASPHALT SHOULDERS |
| MIXTURE USE(S): | HOT-MIX ASPHALT SHOULDERS, N30 |
| AC/PG: | PG58-22 |
| ABR% (MAX): | SEE SPECIAL PROVISION |
| DESIGN AIR VOIDS: | 2.0%, 30 GYRATION DESIGN |
| MIXTURE COMPOSITION: (GRADATION MIXTURE) | HMA SHOULDER |
| FRICTION AGGREGATE: | NONE |
| QUALITY MANAGEMENT PROGRAM: | QC/QA |

• VARIOUS ROUTES
•• VARIOUS COUNTIES

| | | | | | | | | | | | |
|---|-------------|------------|-----------|---|--|------------------------------|------------------|--------|--------------|-----------|--|
| FILE NAME : | USER NAME : | DESIGNED : | REVISED : | STATE OF ILLINOIS DEPARTMENT OF TRANSPORTATION | INDEX OF SHEETS, STANDARDS, GENERAL NOTES, MIXTURE REQUIREMENTS | F.A. RATE: | SECTION | COUNTY | TOTAL SHEETS | SHEET NO. | |
| e:\p\work\p\dot\mccordr\2014\2014-2\78396 | mccordr | DRAWN : | REVISED : | | | * | 09 SAFETY 2014-2 | ** | 17 | 3 | |
| | | CHECKED : | REVISED : | | | CONTRACT NO. 78396 | | | | | |
| Default | | DATE : | REVISED : | | | ILLINOIS FED. AID PROJECT | | | | | |
| | | | | | SCALE: | SHEET OF SHEETS STA. TO STA. | | | | | |

SUMMARY OF QUANTITIES

VARIOUS ROUTES
 RURAL
 90% FED. ; 10% STATE
 VARIOUS COUNTIES
 CONSTRUCTION TYPE
 CODE 0021

| CODE NUMBER | ITEM DESCRIPTION | UNIT | TOTAL QUANTITY |
|-------------|--|--------|----------------|
| X0327693 | HIGH FRICTION SURFACE TREATMENT | SQ YD | 23,450 |
| X4060110 | BITUMINOUS MATERIALS (PRIME COAT) | POUND | 18,379 |
| 20200600 | EXCAVATING AND GRADING EXISTING SHOULDERS | UNIT | 782 |
| 28100209 | STONE RIPRAP, CLASS A5 | TON | 30 |
| 45100200 | CRACK FILLING | POUND | 6134 |
| 48203029 | HOT-MIX ASPHALT SHOULDERS, 8" | SQ YD | 27,224 |
| * 63000001 | STEEL PLATE BEAM GUARDRAIL, TYPE A, 6 FOOT POSTS | FOOT | 262.5 |
| * 63000025 | STEEL PLATE BEAM GUARDRAIL, ATTACHED TO STRUCTURES | FOOT | 150 |
| * 63100167 | TRAFFIC BARRIER TERMINAL, TYPE 1 (SPECIAL) TANGENT | EACH | 12 |
| 63200310 | GUARDRAIL REMOVAL | FOOT | 850 |
| 64200108 | SHOULDER RUMBLE STRIPS, 8 INCH | FOOT | 99,233 |
| 67000400 | ENGINEER FIELD OFFICE, TYPE A | CAL MO | 1 |
| 67100100 | MOBILIZATION | L SUM | 1 |

* SPECIALTY ITEM

• VARIOUS ROUTES
 ** VARIOUS COUNTIES

SUMMARY OF QUANTITIES

VARIOUS ROUTES
 RURAL
 90% FED.; 10% STATE
 VARIOUS COUNTIES
 CONSTRUCTION TYPE
 CODE 0021

| CODE NUMBER | ITEM DESCRIPTION | UNIT | TOTAL QUANTITY |
|-------------|---|-------|----------------|
| 70100460 | TRAFFIC CONTROL AND PROTECTION, STANDARD 701306 | L SUM | 1 |
| 70100500 | TRAFFIC CONTROL AND PROTECTION, STANDARD 701326 | L SUM | 1 |
| * 72000100 | SIGN PANEL - TYPE 1 | SQ FT | 528 |
| * 72900100 | METAL POST - TYPE A | FOOT | 2464 |
| * 78001110 | PAINT PAVEMENT MARKING - LINE 4" | FOOT | 19,320 |
| * 78200410 | GUARDRAIL MARKERS, TYPE A | EACH | 24 |
| * 78201000 | TERMINAL MARKER - DIRECT APPLIED | EACH | 12 |
| 78300100 | PAVEMENT MARKING REMOVAL | SQ FT | 4832 |

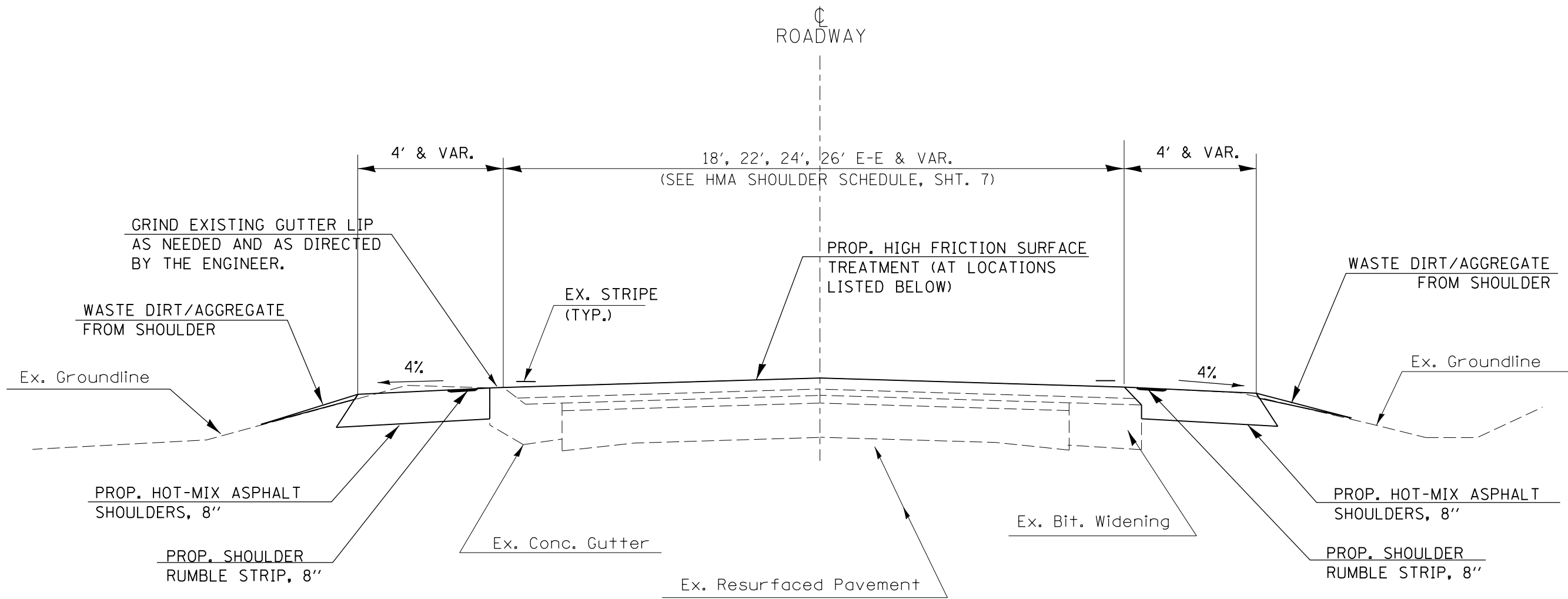
8

* SPECIALTY ITEM

• VARIOUS ROUTES
 ** VARIOUS COUNTIES

| | | | | | | | | | | | | |
|--|---------------------|------------|-----------|---|--|------------------|----|---------------------------|---------|---------|-----------------|--------------|
| FILE NAME = | USER NAME = mecardr | DESIGNED - | REVISED - | STATE OF ILLINOIS DEPARTMENT OF TRANSPORTATION | SUMMARY OF QUANTITIES SHEET 2 | | | F.A. RTE. | SECTION | COUNTY | TOTAL SHEETS | SHEET NO. |
| o:\pvc_work\pvc\dot\mccardr\0371602\78396-sh1-plan.dgn | | DRAWN - | REVISED - | | • | D9 SAFETY 2014-2 | ** | 17 | 5 | | | |
| PLOT SCALE = 1/8" = 1'-0" | | CHECKED - | REVISED - | | CONTRACT NO. 78396 | | | ILLINOIS FED. AID PROJECT | | | | |
| PLOT DATE = 4/2/2014 | | DATE - | REVISED - | | SCALE: | SHEET | OF | SHEETS | STA. | TO STA. | | |

TYPICAL FOR HMA SHOULDERS, 8"



TO BE USED:
AT EXISTING CONCRETE
GUTTER LOCATIONS.

TO BE USED:
AT EXISTING AGGREGATE
SHOULDER LOCATIONS.

LOCATIONS FOR
HIGH FRICTION SURFACE TREATMENT:

- LOCATION 1
- LOCATION 4
- LOCATION 6
- LOCATION 7
- LOCATION 8

(SEE SCHEDULE, SHT. 10)

- VARIOUS ROUTES
- VARIOUS COUNTIES

| | | | |
|---|------------------------------|------------|-----------|
| FILE NAME = | USER NAME = mccordkr | DESIGNED - | REVISED - |
| ei:\pw\work\p\dot\mccordkr\0371602\78396-sh1-plan.dgn | | DRAWN - | REVISED - |
| Default | PLOT SCALE = 100.0000' / in. | CHECKED - | REVISED - |
| | PLOT DATE = 3/20/2014 | DATE - | REVISED - |

**STATE OF ILLINOIS
DEPARTMENT OF TRANSPORTATION**

TYPICAL SECTION

SCALE: SHEET OF SHEETS STA. TO STA.

| F.A. RTE. | SECTION | COUNTY | TOTAL SHEETS | SHEET NO. |
|---------------------------|------------------|--------|--------------------|-----------|
| • | D9 SAFETY 2014-2 | •• | 17 | 6 |
| | | | CONTRACT NO. 78396 | |
| ILLINOIS FED. AID PROJECT | | | | |

HMA SHOULDER SCHEDULE

| LOCATION STATION TO STATION | EXIST. PAVEMENT LENGTH (INFOR. ONLY) FOOT | EXIST. PAVEMENT WIDTH FOOT | EXIST. AGG./BIT. SHOULDER WIDTH FOOT | HMA SHOULDERS, 8" | | BITUMINOUS MATERIALS (PRIME COAT) POUND | SHOULDER RUMBLE STRIPS, 8 INCH FOOT | EXC. & GRADING EX. SHOULDER UNIT | NOTES |
|---|--|-------------------------------------|--|-------------------------------|----------------|---|---|---|------------|
| | | | | 3 FT. SQ YD | 4 FT. SQ YD | | | | |
| | | | | | | | | | |
| LOCATION 1 - US 45 IN GALLATIN CO. | | | | | | | | | |
| STA. 802+80.00 TO STA. 826+17.00 | 2,337 | 26 | 2 | 1,558 | | 1052 | 4,674 | 46 | |
| GALLATIN CO TOTALS | | | | 1,558 | 0 | 1052 | 4,674 | 46 | |
| LOCATION 2 - IL 14 IN HAMILTON CO. (NEAR FRANKLIN CO LINE) | | | | | | | | | |
| STA. 656+00.00 TO STA. 675+00.00 | 1,900 | 26 | 2 | | 1,689 | 1140 | 3,800 | 38 | |
| LOCATION 3 - IL 14 IN HAMILTON CO. (NEAR MCLEANSBORO) | | | | | | | | | |
| STA. 871+00.00 TO STA. 924+33.70 BK | 5,334 | 28 | 3 | | 4,741 | 3200 | 10,667 | 107 | |
| STA. 924+46.40 AH TO STA. 925+56.00 BK | 110 | 28 | 3 | | 97 | 66 | 219 | 2 | |
| STA. 14+00.00 AH TO STA. 18+00.00 | 400 | 28 | 3 | | 356 | 240 | 800 | 8 | |
| HAMILTON CO TOTALS | | | | 0 | 6,883 | 4646 | 15,487 | 155 | |
| LOCATION 4 - IL 14 IN FRANKLIN CO. (NEAR BENTON) | | | | | | | | | |
| STA. 18+45.00 TO STA. 30+30.80 BK | 1,186 | 24 | 2 | 791 | | 534 | 2,372 | 24 | |
| STA. 30+32.90 AH TO STA. 49+63.30 BK | 1,930 | 24 | 2 | 1,287 | | 869 | 3,861 | 39 | |
| STA. 49+62.80 AH TO STA. 78+95.90 BK | 2,933 | 24 | 2 | 1,955 | | 1320 | 5,866 | 59 | |
| STA. 78+98.46 AH TO STA. 115+27.00 | 3,629 | 24 | 2 | 2,419 | | 1633 | 7,257 | 73 | |
| FRANKLIN CO TOTALS | | | | 6,452 | 0 | 4355 | 19,356 | 195 | |
| LOCATION 5 - IL 15 IN JEFFERSON CO. (WOODLAWN RD. TO DIVERS LN.) | | | | | | | | | |
| STA. 1052+50.00 TO STA. 1113+81.50 BK | 6,132 | 28 | 3 | | | | 12,263 | | |
| STA. 1114+00.00 AH TO STA. 1123+06.60 BK | 907 | 28 | 3 | | | | 1,813 | | |
| STA. 1135+52.00 AH TO STA. 1151+76.00 BK | 1,624 | 28 | 3 | | | | 3,248 | | |
| STA. 1151+80.00 AH TO STA. 1163+96.00 | 1,216 | 28 | 3 | | | | 2,432 | | |
| OMIT SN 041-0104: STA. 1163+96 TO STA. 1166+30 | -237 | | | | | | | | |
| STA. 1166+30.00 TO STA. 1173+90.00 | 760 | 28 | 3 | | | | 1,520 | | |
| LOCATION 6 - IL 148 IN JEFFERSON CO. (WALTONVILLE RD.) | | | | | | | | | |
| STA. 194+00.00 TO STA. 231+21.45 BK | 3,721 | 24 | 3 | | 3,308 | 2233 | 11,164 | 112 | NOTE 1 |
| STA. 235+78.70 AH TO STA. 242+00.00 | 621 | 24 | 3 | | 552 | 373 | 1,864 | 19 | NOTE 1 |
| JEFFERSON CO TOTALS | | | | 0 | 3,860 | 2606 | 34,304 | 131 | |
| LOCATION 7 - OLD IL 13 IN WILLIAMSON CO. (WEST OF IL 148) | | | | | | | | | |
| STA. 498+00.00 TO STA. 524+64.00 | 2,664 | 23 | 2 | 1,776 | | 1200 | 5,328 | 53 | |
| OMIT SN 100-0045: STA. 524+64 TO STA. 525+38 | -74 | | | | | | | | |
| STA. 525+38.00 TO STA. 534+25.90 BK | 888 | 23 | 2 | 592 | | 400 | 1,776 | 18 | |
| STA. 534+35.60 AH TO STA. 560+10.50 BK | 2,575 | 23 | 2 | 1,717 | | 1159 | 5,150 | 52 | |
| STA. 560+51.40 AH TO STA. 582+20.00 | 2,169 | 23 | 2 | 1,446 | | 976 | 4,337 | 43 | |
| WILLIAMSON CO. TOTALS | | | | 5,530 | 0 | 3734 | 16,591 | 166 | |
| LOCATION 8 - IL 146 IN HARDIN CO. (WEST OF ELIZABETHTOWN) | | | | | | | | | |
| STA. 187+00.00 TO STA. 225+82.70 BK | 3,883 | 26 | 3 | 2588 | | 1747 | 7,765 | 78 | |
| STA. 232+71.90 AH TO STA. 238+00.00 | 528 | 26 | 3 | 352 | | 238 | 1,056 | 11 | |
| HARDIN CO. TOTALS | | | | 2941 | 0 | 1985 | 8,822 | 89 | |
| PROJECT TOTAL | | 47,347 | | | 16,481 | 10,743 | 18,379 | 99,233 | 782 |
| | | | | HMA SHOULDER, 8" TOTAL | | 27,224 | | | |

NOTE 1: AT LOCATION 6 ON IL. 148, THE SHOULDER RUMBLE STRIPS, 8 INCH SHALL BE CONSTRUCTED ON THE CENTERLINE AS WELL AS THE SHOULDER.

NOTE 2: ANY EXISTING GUTTER OUTLETS IN AREA WHERE NEW HMA SHOULDER, 8" IS TO BE CONSTRUCTED SHALL BE FILLED AS DIRECTED BY THE ENGINEER. SEE GENERAL NOTES, SHEET 3.

• VARIOUS ROUTES
• VARIOUS COUNTIES

GUARDRAIL SCHEDULE

| LOCATION STATION TO STATION | Existing Length (Inform. Only) | GUARDRAIL REMOVAL | SPBGR TYPE A, 6 FT. POSTS | TRAFFIC BARRIER TERMINAL, TY. 1 SPL. (TANG) | SPBGR ATTACHED TO STRUCTURE | TERMINAL MARKERS - DA | GUARDRAIL MARKERS TY. A | STONE RIPRAP, CLASS A5 |
|--|-----------------------------------|----------------------|------------------------------|---|--------------------------------|-----------------------------|----------------------------|------------------------------|
| | FOOT | FOOT | FOOT | EACH | FOOT | EACH | EACH | TON |
| LOCATION 4 - IL 14 IN FRANKLIN CO. | | | | | | | | |
| 028-7049 (North Side) | | | | | | | | |
| LT 20+50.00 | | | | 1 | | 1 | | |
| LT 20+65.00 TO LT 21+65.00 | 100 | 100 | | | | | | |
| LT 21+00.00 TO LT 21+37.50 | | | | | 37.5 | | 4 | |
| LT 21+92.00 | | | | 1 | | 1 | | |
| 028-7049 (South Side) | | | | | | | | |
| RT 20+78.00 | | | | 1 | | 1 | | 30 |
| RT 21+00.00 TO RT 22+00.00 | 100 | 100 | | | | | | |
| RT 21+28.00 TO RT 21+65.50 | | | | | 37.5 | | 4 | |
| RT 22+16.00 | | | | 1 | | 1 | | |
| 028-7051 (North Side) | | | | | | | | |
| LT 34+05.00 | | | | 1 | | 1 | | |
| LT 34+30.00 TO LT 35+20.00 | 90 | 90 | | | | | | |
| LT 34+55.00 TO LT 34+92.50 | | | | | 37.5 | | 4 | |
| LT 35+43.00 | | | | 1 | | 1 | | |
| 028-7051 (South Side) | | | | | | | | |
| RT 33+82.00 | | | | 1 | | 1 | | |
| RT 34+00.00 TO RT 34+90.00 | 90 | 90 | | | | | | |
| RT 34+32.00 TO RT 34+69.50 | | | | | 37.5 | | 4 | |
| RT 35+20.00 | | | | 1 | | 1 | | |
| Exist. Guardrail over 18" pipe (North Side) | | | | | | | | |
| LT 103+64.00 | | | | 1 | | 1 | | |
| LT 103+64.00 TO LT 106+34.00 | 270 | 270 | | | | | | |
| LT 104+14.00 TO LT 105+76.50 | | | 162.5 | | | | 4 | |
| LT 106+26.50 | | | | 1 | | 1 | | |
| Exist. Guardrail over 18" pipe (North Side) | | | | | | | | |
| RT 103+64.00 | | | | 1 | | 1 | | |
| RT 103+64.00 TO RT 105+64.00 | 200 | 200 | | | | | | |
| RT 104+14.00 TO RT 105+14.00 | | | 100.0 | | | | 4 | |
| RT 105+64.00 | | | | 1 | | 1 | | |
| PROJECT TOTALS: | | 850 | 262.5 | 12 | 150.0 | 12 | 24 | 30 |

NOTE 1: ANY WIDENING AND EXTRA DIRT NECESSARY TO CONSTRUCT THE TYPE 1, SPECIAL (TANGENT) GUARDRAIL TERMINAL SHALL BE INCLUDED IN THE COST OF THE **TRAFFIC BARRIER TERMINAL, TYPE 1 SPECIAL (TANGENT)**.

NOTE 2: STONE RIPRAP, CLASS A5 SHALL BE PLACED AT LOCATION INDICATED AND AS DIRECTED BY THE ENGINEER.

- VARIOUS ROUTES
- VARIOUS COUNTIES

| | | | | | | | | | | |
|-------------|---|------------|-----------|---|---------------------------|-----------|------------------|--------|--------------|---------------------------|
| FILE NAME = | USER NAME = mccordkr | DESIGNED - | REVISED - | STATE OF ILLINOIS DEPARTMENT OF TRANSPORTATION | GUARDRAIL SCHEDULE | F.A. RTE. | SECTION | COUNTY | TOTAL SHEETS | SHEET NO. |
| Default | et:\pwork\pwork\mccordkr\0371602\78396-sh1-plan.dgn | DRAWN - | REVISED - | | | • | D9 SAFETY 2014-2 | •• | 17 | 8 |
| | PLOT SCALE = 100.0000' / 1". | CHECKED - | REVISED - | | SCALE: | | | | | |
| | PLOT DATE = 3/20/2014 | DATE - | REVISED - | | SHEET | OF | SHEETS | STA. | TO | STA. |
| | | | | | | | | | | ILLINOIS FED. AID PROJECT |
| | | | | | | | | | | CONTRACT NO. 78396 |

SIGN SCHEDULE

| LOCATION | SIGN ID NO. | DESCRIPTION | SIGN SIZE | AREA PER SIGN SO. FT. | TOTAL SIGN REQUIRED | SIGN PANEL - TYPE 1 | METAL POST - TYPE A |
|--|-------------|-------------------|-----------|-----------------------|---------------------|---------------------|---------------------|
| | | | | | | SQ FT | FOOT |
| LOCATION 1 - US 45 IN GALLATIN CO. | | | | | | | |
| STA. 804+00.00 TO STA. 821+00.00 | W1-8 | CHEVRON ALIGNMENT | 18"X24" | 3 | 18 | 54 | 252 |
| GALLATIN CO TOTALS | | | | | | 54 | 252 |
| LOCATION 2 - IL 14 IN HAMILTON CO. (NEAR FRANKLIN CO. LINE) | | | | | | | |
| STA. 659+50.00 TO STA. 670+00.00 | W1-8 | CHEVRON ALIGNMENT | 18"X24" | 3 | 10 | 30 | 140 |
| LOCATION 3 - IL 14 IN HAMILTON CO. (NEAR MCLEANSBORO) | | | | | | | |
| STA. 908+00.00 TO STA. 924+33.70 BK | W1-8 | CHEVRON ALIGNMENT | 18"X24" | 3 | 28 | 84 | 392 |
| STA. 924+46.40 AH TO STA. 925+00.00 | W1-8 | CHEVRON ALIGNMENT | 18"X24" | 3 | 0 | 0 | 0 |
| HAMILTON CO TOTALS | | | | | | 114 | 532 |
| LOCATION 4 - IL 14 IN FRANKLIN CO. (NEAR BENTON) | | | | | | | |
| STA. 22+50.00 TO STA. 30+30.00 | W1-8 | CHEVRON ALIGNMENT | 18"X24" | 3 | 10 | 30 | 140 |
| FRANKLIN CO TOTALS | | | | | | 30 | 140 |
| LOCATION 6 - IL 148 IN JEFFERSON CO. (WALTONVILLE RD.) | | | | | | | |
| STA. 199+00.00 TO STA. 231+21.45 BK | W1-8 | CHEVRON ALIGNMENT | 18"X24" | 3 | 40 | 120 | 560 |
| STA. 235+78.70 AH TO STA. 242+00.00 | W1-8 | CHEVRON ALIGNMENT | 18"X24" | 3 | 8 | 24 | 112 |
| JEFFERSON CO TOTALS | | | | | | 144 | 672 |
| LOCATION 7 - OLD IL 13 IN WILLIAMSON CO. (WEST OF IL 148) | | | | | | | |
| STA. 498+00.00 TO STA. 502+00.00 | W1-8 | CHEVRON ALIGNMENT | 18"X24" | 3 | 10 | 30 | 140 |
| STA. 504+00.00 TO STA. 508+35.00 | W1-8 | CHEVRON ALIGNMENT | 18"X24" | 3 | 10 | 30 | 140 |
| STA. 529+00.00 TO STA. 534+25.00 | W1-8 | CHEVRON ALIGNMENT | 18"X24" | 3 | 14 | 42 | 196 |
| STA. 555+40.00 TO STA. 560+00.00 | W1-8 | CHEVRON ALIGNMENT | 18"X24" | 3 | 12 | 36 | 168 |
| WILLIAMSON CO. TOTALS | | | | | | 138 | 644 |
| LOCATION 8 - IL 146 IN HARDIN CO. (WEST OF ELIZABETHTOWN) | | | | | | | |
| STA. 213+00.00 TO STA. 225+82.70 | W1-8 | CHEVRON ALIGNMENT | 18"X24" | 3 | 16 | 48 | 224 |
| HARDIN CO. TOTALS | | | | | | 48 | 224 |
| PROJECT TOTAL | | | | | | 528 | 2,464 |

• VARIOUS ROUTES
•• VARIOUS COUNTIES

| | | | | | | | | | | | |
|---|----------------------|------------|-----------|---|----------------------|--------------------|------------------|--------|--------------|-----------|----|
| FILE NAME = | USER NAME = mccordkr | DESIGNED - | REVISED - | STATE OF ILLINOIS DEPARTMENT OF TRANSPORTATION | SIGN SCHEDULE | F.A. RTE. | SECTION | COUNTY | TOTAL SHEETS | SHEET NO. | |
| et:\pw\work\p1dot\mccordkr\0371602\78396-sh1-plan.dgn | | DRAWN - | REVISED - | | | • | D9 SAFETY 2014-2 | •• | 17 | 9 | |
| Default | | CHECKED - | REVISED - | | | CONTRACT NO. 78396 | | | | | |
| | | DATE - | REVISED - | | | SCALE: | SHEET | OF | SHEETS | STA. | TO |

HIGH FRICTION SURFACE TREATMENT SCHEDULE

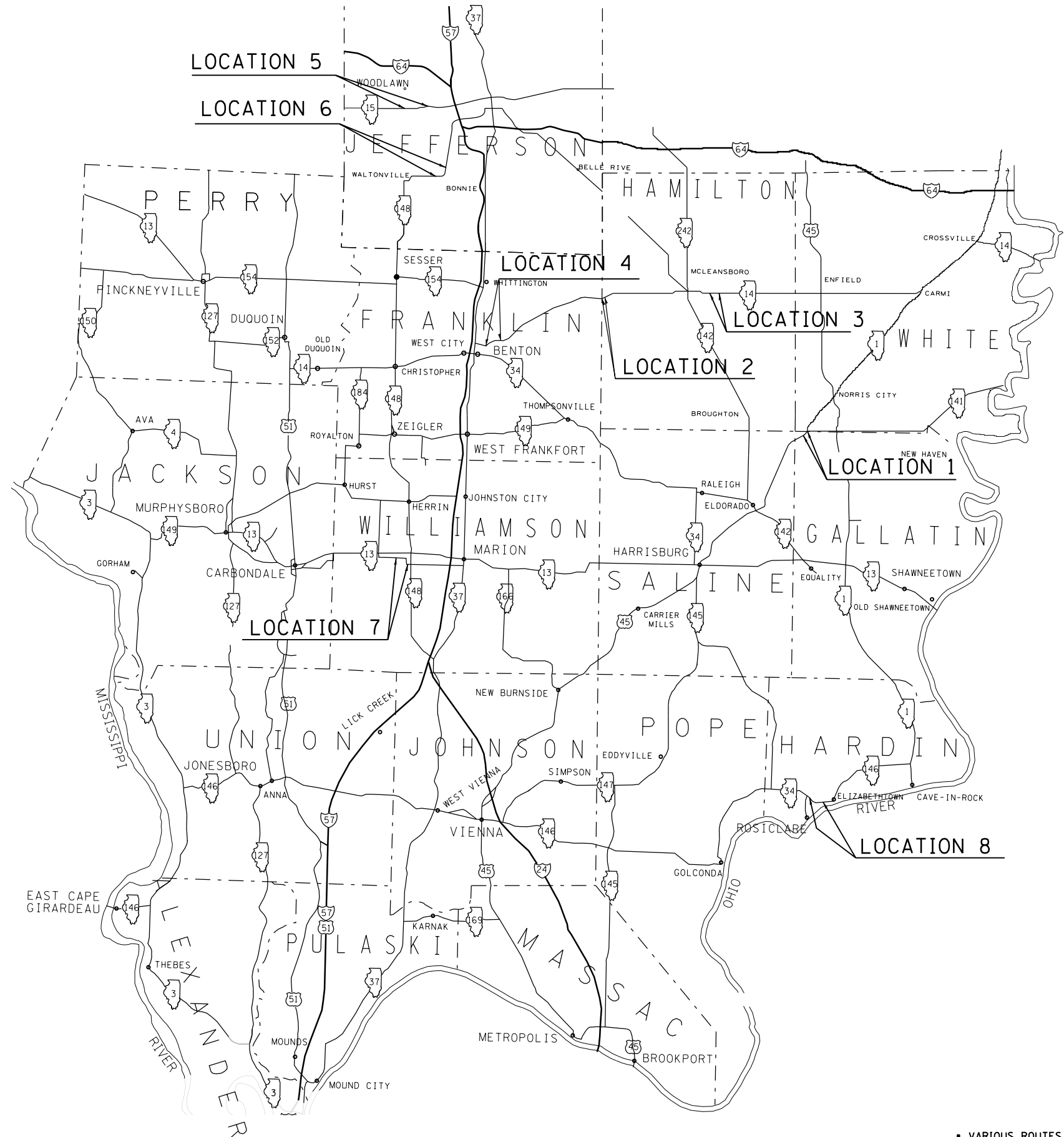
| LOCATION STATION TO STATION | EXIST. PAVEMENT LENGTH (INFOR. ONLY) FOOT | EXIST. PAVEMENT WIDTH FOOT | HIGH FRICTION SURFACE TREATMENT GALLON | PAVEMENT MARKING REMOVAL (SEE NOTE 2) SQ FT | PAINT PAVEMENT MARKING - 4" | | CRACK FILLING (SEE NOTE 1) POUND |
|--|--|-------------------------------------|--|---|---|----------------|---|
| | | | | | WHITE FOOT | YELLOW FOOT | |
| | | | | | LOCATION 1 - US 45 IN GALLATIN CO. | | |
| STA. 802+96.00 TO STA. 821+73.00 | 1,877 | 26 | 5422 | 1,056 | 3,754 | 469 | 1,341 |
| GALLATIN CO TOTALS | | | | | | | |
| LOCATION 4 - IL 14 IN FRANKLIN CO. (NEAR BENTON) | | | | | | | |
| STA. 20+71.00 TO STA. 30+30.80 BK | 960 | 24 | 2559 | 540 | 1,920 | 240 | 686 |
| STA. 30+32.90 AH TO STA. 33+41.00 BK | 308 | 24 | 822 | 174 | 616 | 77 | 220 |
| FRANKLIN CO TOTALS | | | | | | | |
| LOCATION 6 - IL 148 IN JEFFERSON CO. (WALTONVILLE RD.) | | | | | | | |
| STA. 203+93.00 TO STA. 231+21.45 BK | 2,728 | 24 | 7276 | 1,535 | 5,456 | 682 | 1,949 |
| STA. 235+78.70 AH TO STA. 236+80.00 | 101 | 24 | 270 | 57 | 202 | 25 | 72 |
| JEFFERSON CO TOTALS | | | | | | | |
| LOCATION 7 - OLD IL 13 IN WILLIAMSON CO. (WEST OF IL 148) | | | | | | | |
| STA. 528+44.00 TO STA. 534+25.90 BK | 582 | 23 | 1487 | 327 | 1,164 | 145 | 416 |
| STA. 534+35.60 AH TO STA. 535+36.00 | 100 | 23 | 257 | 56 | 200 | 25 | 72 |
| STA. 554+50.00 TO STA. 560+10.50 BK | 561 | 23 | 1433 | 316 | 1,122 | 140 | 400 |
| STA. 560+51.40 AH TO STA. 561+51.00 | 100 | 23 | 255 | 56 | 200 | 25 | 71 |
| WILLIAMSON CO. TOTALS | | | | | | | |
| LOCATION 8 - IL 146 IN HARDIN CO. (WEST OF ELIZABETHTOWN) | | | | | | | |
| STA. 187+37.00 TO STA. 200+07.00 | 1,270 | 26 | 3669 | 715 | 2,540 | 318 | 907 |
| HARDIN CO. TOTALS | | | | | | | |
| PROJECT TOTAL | | | | | | | |
| | | 47,347 | | 23,450 | 4,832 | 19,320 | 6,134 |

NOTE 1: CRACK FILLING IS CALCULATED USING 1 LB. OF MATERIAL PER 2.8 LINEAL FOOT. USED 1 STRIP FOR EACH LANE THROUGH THE LENGTH OF THE CURVES, UNLESS OTHERWISE NOTED ON THE PLANS.
 NOTE 2: QUANTITIES AT EACH LOCATION INCLUDE EDGE OF PAVEMENT STRIPING AND CENTERLINE STRIPING.

• VARIOUS ROUTES
 •• VARIOUS COUNTIES

LOCATION MAP

- LOCATION 1: US 45 IN GALLATIN CO. SOUTH OF IL. 141
- LOCATION 2: IL. 14 IN HAMILTON CO. EAST OF THE FRANKLIN COUNTY LINE.
- LOCATION 3: IL. 14 IN HAMILTON CO. EAST OF MCLEANSBORO.
- LOCATION 4: IL. 14 IN FRANKLIN CO. EAST OF BENTON.
- LOCATION 5: IL. 15 IN JEFFERSON CO. SOUTH OF WOODLAWN.
- LOCATION 6: IL. 148 IN JEFFERSON CO. EAST OF WALTONVILLE.
- LOCATION 7: OLD IL. 13 IN WILLIAMSON CO. WEST OF IL. 148.
- LOCATION 8: IL. 146 IN HARDIN CO. WEST OF ELIZABETHTOWN.



• VARIOUS ROUTES
 •• VARIOUS COUNTIES

| | | | |
|---|------------------------------|------------|-----------|
| FILE NAME = | USER NAME = mccordkr | DESIGNED - | REVISED - |
| et:\pw\work\p\idot\mccordkr\d0371602\78396-sh1-plan.dgn | | DRAWN - | REVISED - |
| Default | PLOT SCALE = 100.0000' / in. | CHECKED - | REVISED - |
| | PLOT DATE = 3/20/2014 | DATE - | REVISED - |

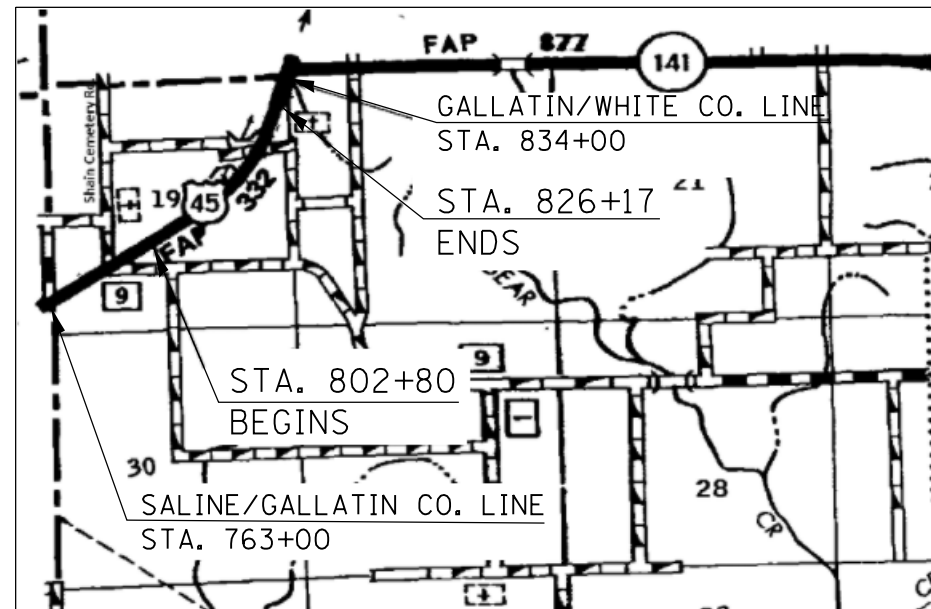
**STATE OF ILLINOIS
 DEPARTMENT OF TRANSPORTATION**

LOCATION MAP OF PROJECTS

SCALE: SHEET OF SHEETS STA. TO STA.

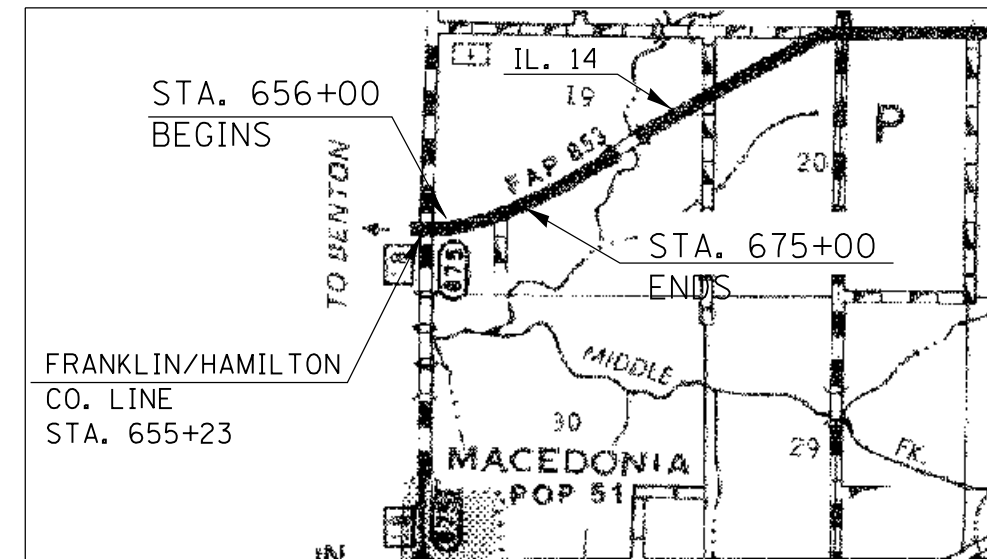
| F.A. RTE. | SECTION | COUNTY | TOTAL SHEETS | SHEET NO. |
|---------------------------|------------------|--------|--------------|-----------|
| • | D9 SAFETY 2014-2 | •• | 17 | 11 |
| CONTRACT NO. 78396 | | | | |
| ILLINOIS FED. AID PROJECT | | | | |

LOCATION 1
US 45 IN GALLATIN CO.
SOUTH OF IL 141



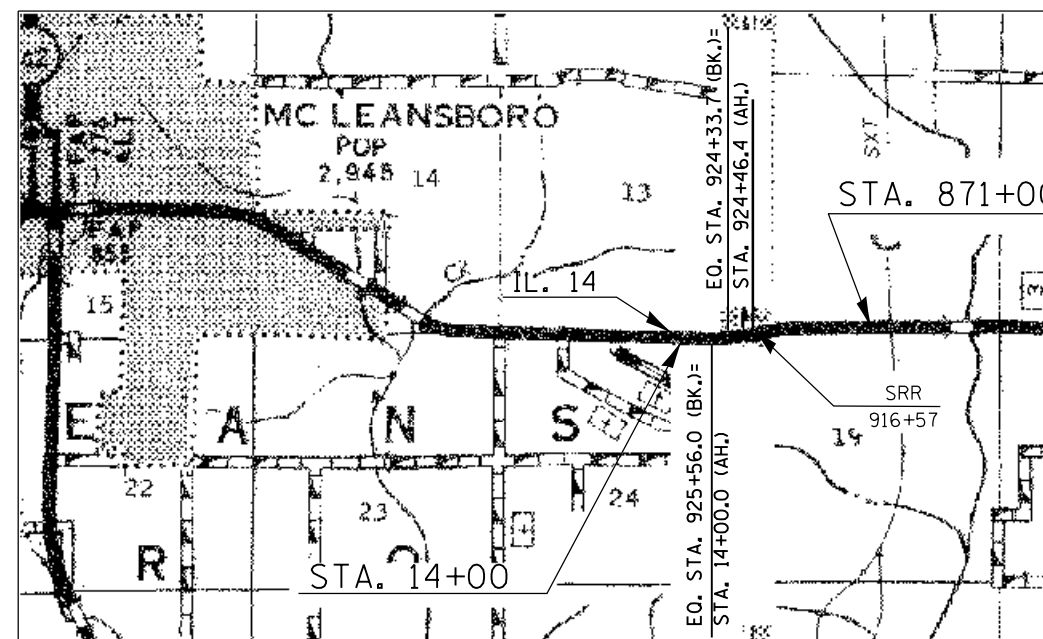
PAY ITEMS:
3' HMA SHOULDERS, 8"
SHOULDER RUMBLE STRIPS, 8 INCH
CHERVRON SIGNS
HIGH FRICTION SURFACE TREATMENT

LOCATION 2
IL. 14 IN HAMILTON CO.
EAST OF FRANKLIN CO. LINE



PAY ITEMS:
4' HMA SHOUDERS, 8"
SHOULDER RUMBLE STRIPS, 8 INCH
CHERVRON SIGNS

LOCATION 3
IL. 14 IN HAMILTON CO.
EAST OF MCLEANSBORO



PAY ITEMS:
4' HMA SHOULDER, 8"
SHOULDER RUMBLE STRIPS, 8 INCH
CHEVRON WARNING SIGNS

| | | | |
|---|------------------------------|------------|-----------|
| FILE NAME = | USER NAME = mccordkr | DESIGNED - | REVISED - |
| c:\pwwork\pwwork\mccordkr\d0371602\78396-sh1-plan.dgn | | DRAWN - | REVISED - |
| Default | | CHECKED - | REVISED - |
| | PLOT SCALE = 100.0000' / in. | DATE - | REVISED - |
| | PLOT DATE = 3/20/2014 | | |

STATE OF ILLINOIS
DEPARTMENT OF TRANSPORTATION

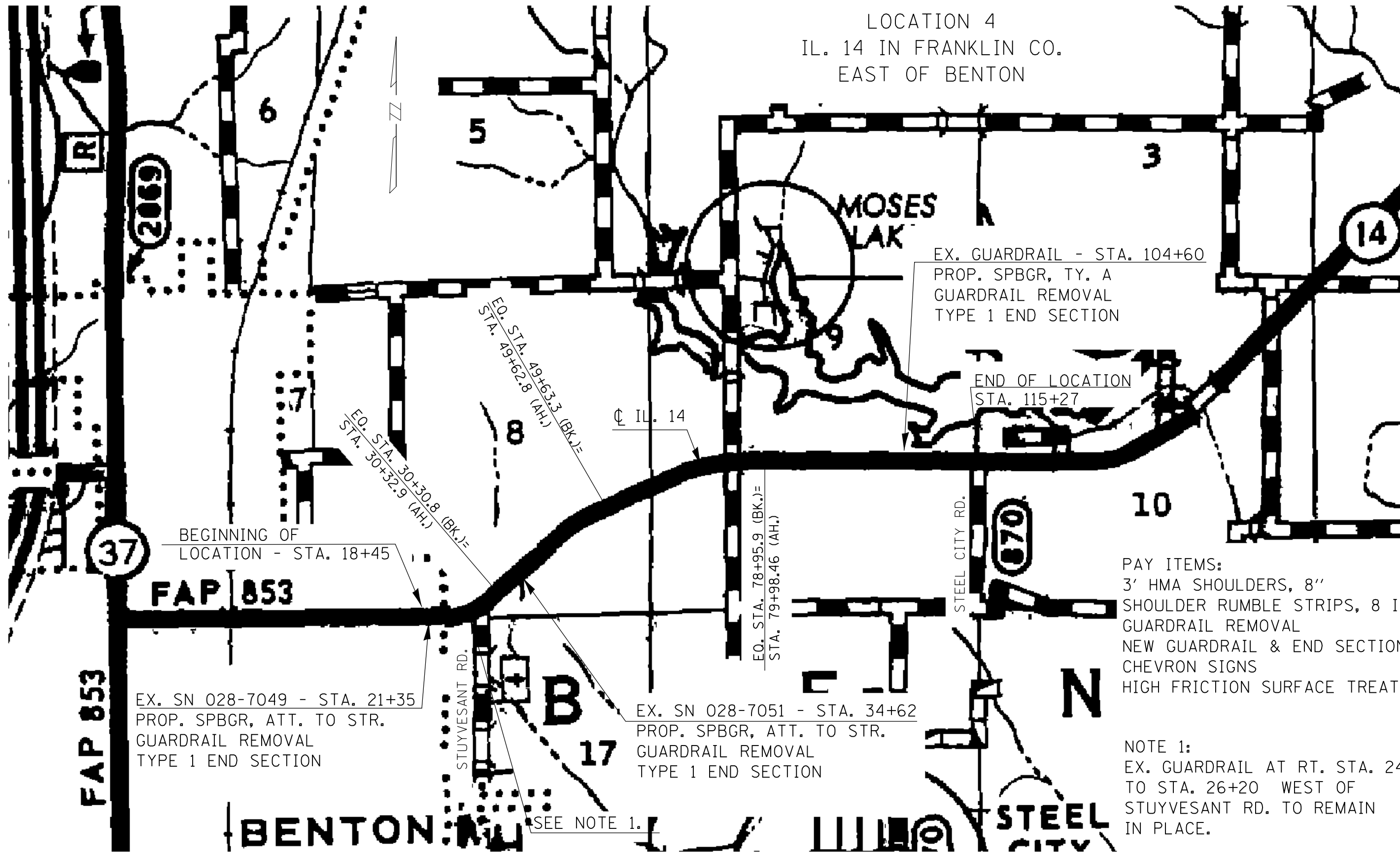
LOCATION MAPS -
SHEET 1

SCALE: SHEET OF SHEETS STA. TO STA.

| F.A. RTE. | SECTION | COUNTY | TOTAL SHEETS | SHEET NO. |
|---------------------------|------------------|--------|--------------------|-----------|
| | D9 SAFETY 2014-2 | ** | 17 | 12 |
| | | | CONTRACT NO. 78396 | |
| ILLINOIS FED. AID PROJECT | | | | |

• VARIOUS ROUTES
•• VARIOUS COUNTIES

LOCATION 4
 IL. 14 IN FRANKLIN CO.
 EAST OF BENTON



EX. GUARDRAIL - STA. 104+60
 PROP. SPBGR, TY. A
 GUARDRAIL REMOVAL
 TYPE 1 END SECTION

END OF LOCATION
 STA. 115+27

BEGINNING OF
 LOCATION - STA. 18+45

FAP 853

EX. SN 028-7049 - STA. 21+35
 PROP. SPBGR, ATT. TO STR.
 GUARDRAIL REMOVAL
 TYPE 1 END SECTION

EX. SN 028-7051 - STA. 34+62
 PROP. SPBGR, ATT. TO STR.
 GUARDRAIL REMOVAL
 TYPE 1 END SECTION

PAY ITEMS:
 3' HMA SHOULDERS, 8"
 SHOULDER RUMBLE STRIPS, 8 INCH
 GUARDRAIL REMOVAL
 NEW GUARDRAIL & END SECTIONS
 CHEVRON SIGNS
 HIGH FRICTION SURFACE TREATMENT

NOTE 1:
 EX. GUARDRAIL AT RT. STA. 24+92
 TO STA. 26+20 WEST OF
 STUYVESANT RD. TO REMAIN
 IN PLACE.

FAP 853

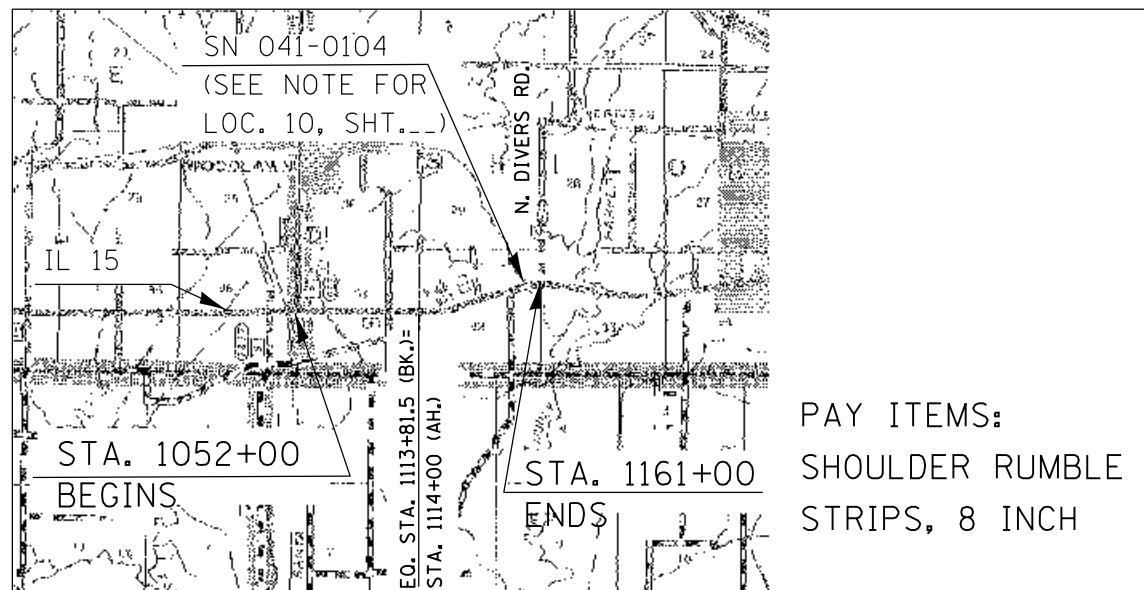
BENTON

STEEL CITY

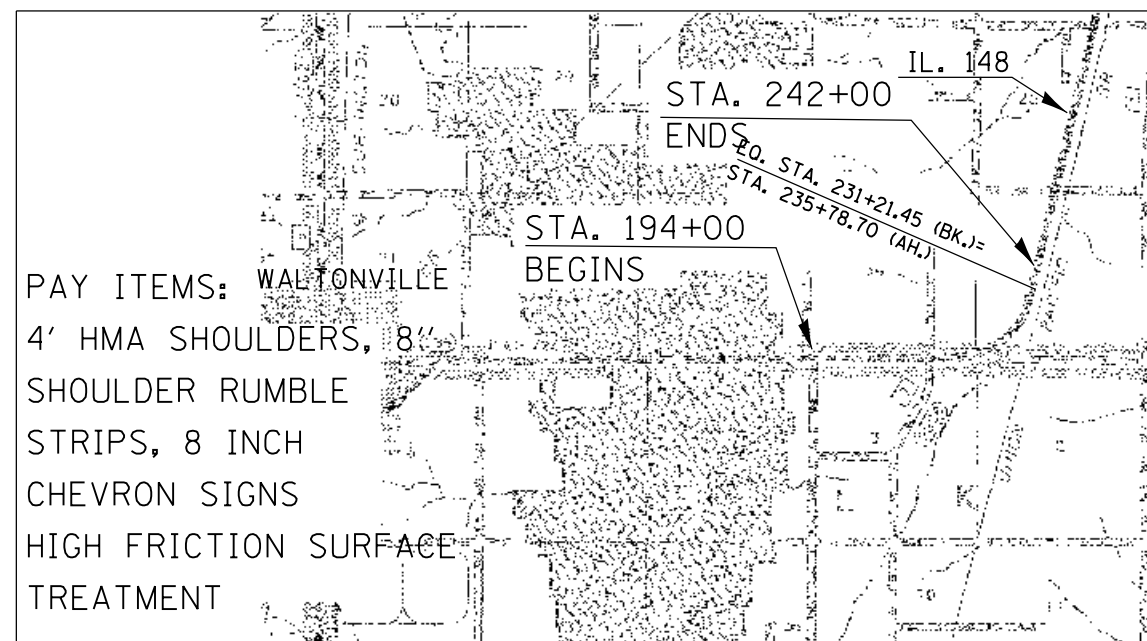
• VARIOUS ROUTES
 •• VARIOUS COUNTIES

| | | | | | | | | | | | | | | | | |
|-------------|---|------------|-----------|---|---------------------------|-------|----|--------|-----------|---------|--------|--------------|------------------|----|----|----|
| FILE NAME = | USER NAME = mccordkr | DESIGNED - | REVISED - | STATE OF ILLINOIS DEPARTMENT OF TRANSPORTATION | LOCATION MAPS- SHEET 2 | | | | F.A. RTÉ. | SECTION | COUNTY | TOTAL SHEETS | SHEET NO. | | | |
| Default | et:\pw\work\p1dot\mccordkr\0371602\78396-sh1-plan.dgn | DRAWN - | REVISED - | | SCALE: | SHEET | OF | SHEETS | STA. | TO | STA. | • | D9 SAFETY 2014-2 | •• | 17 | 13 |
| | PLOT SCALE = 100.0000' / in. | CHECKED - | REVISED - | | CONTRACT NO. 78396 | | | | | | | | | | | |
| | PLOT DATE = 3/20/2014 | DATE - | REVISED - | | ILLINOIS FED. AID PROJECT | | | | | | | | | | | |

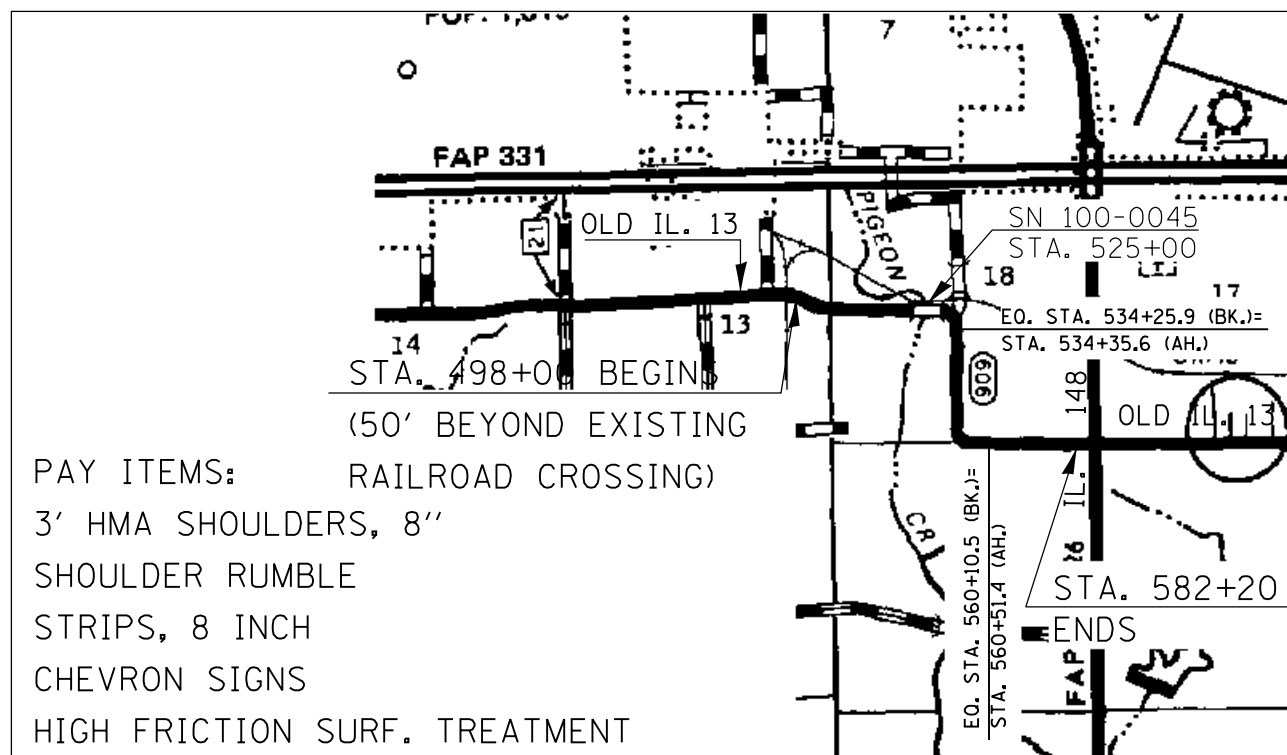
LOCATION 5
IL. 15 IN JEFFERSON CO.
SOUTH OF WOODLAWN



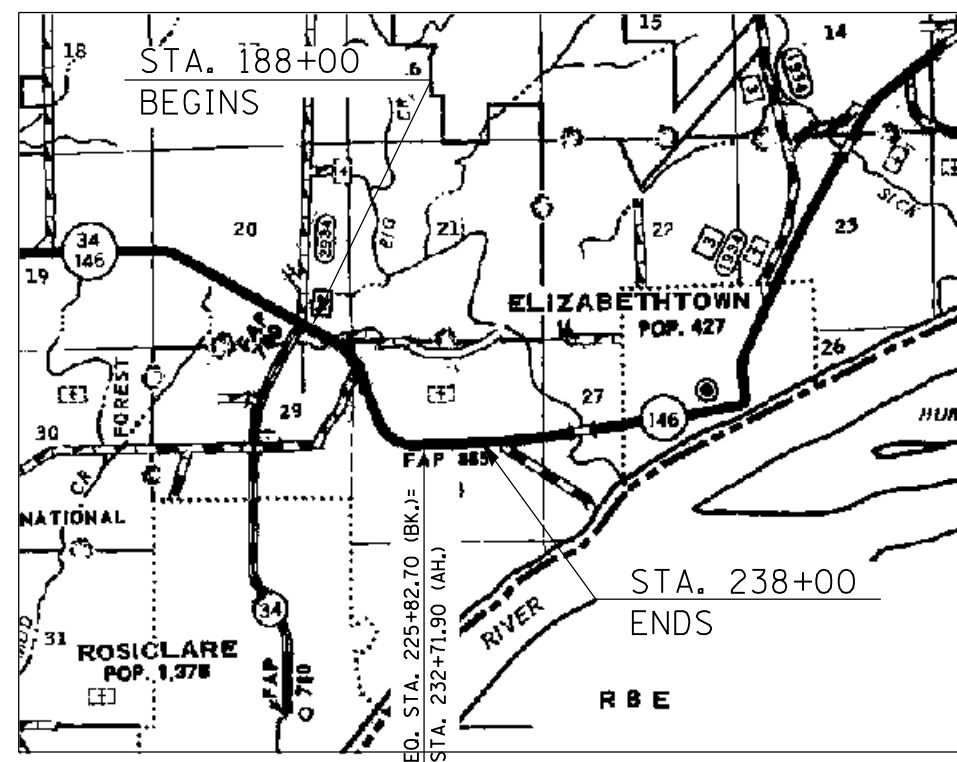
LOCATION 6
IL 148 IN JEFFERSON CO.
EAST OF WALTONVILLE



LOCATION 7
OLD IL. 13 IN WILLIAMSON CO.
WEST OF IL 148



LOCATION 8
IL 146 IN HARDIN CO.
WEST OF ELIZABETHTOWN



PAY ITEMS:
3' HMA SHOULDERS, 8"
SHOULDER RUMBLE
STRIPS, 8 INCH
CHEVRON SIGNS
HIGH FRICTION
SURFACE TREATMENT

• VARIOUS ROUTES
•• VARIOUS COUNTIES

| | | | |
|---|------------------------------|------------|-----------|
| FILE NAME = | USER NAME = mccordkr | DESIGNED - | REVISED - |
| et:\pw\work\p\dot\mccordkr\0371602\78396-sht-plan.dgn | | DRAWN - | REVISED - |
| Default | | CHECKED - | REVISED - |
| | PLOT SCALE = 100.0000' / in. | DATE - | REVISED - |
| | PLOT DATE = 3/20/2014 | | |

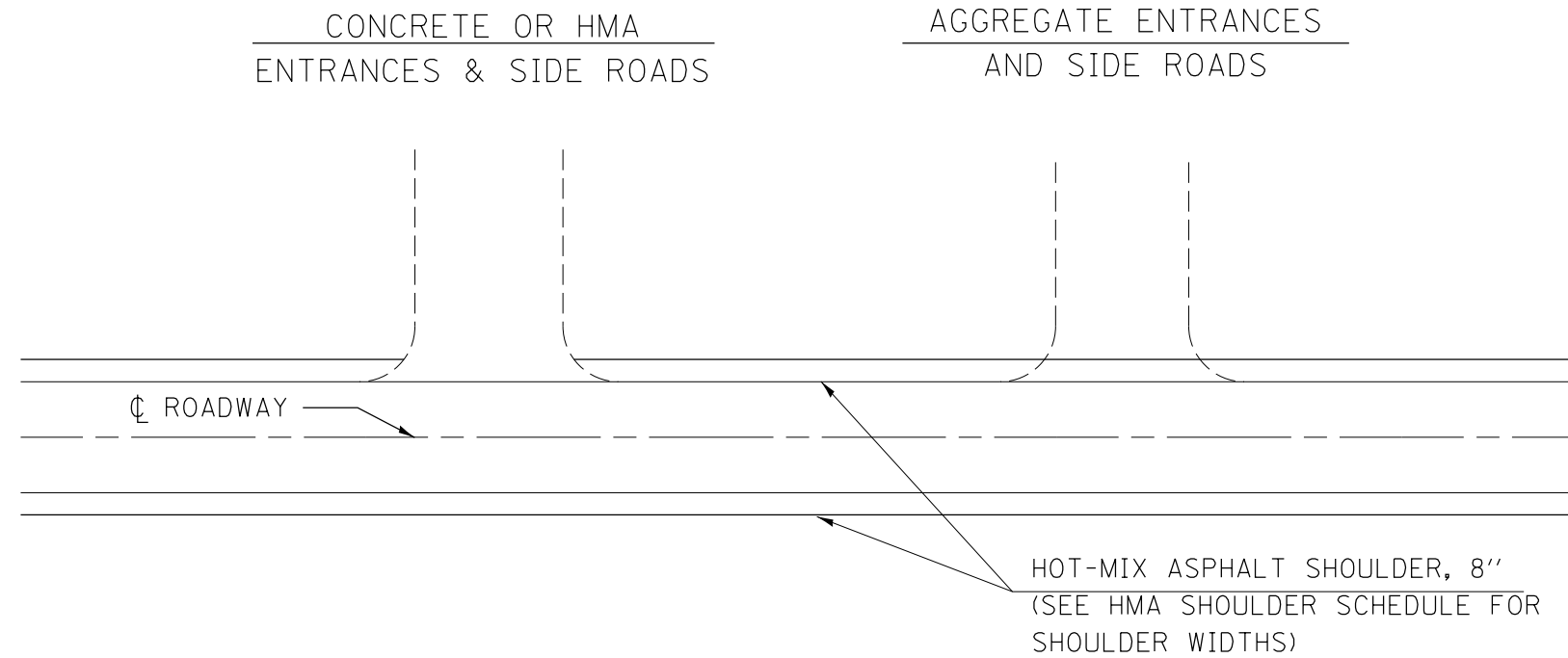
STATE OF ILLINOIS
DEPARTMENT OF TRANSPORTATION

LOCATION MAPS -
SHEET 3

SCALE: SHEET OF SHEETS STA. TO STA.

| F.A. RTE. | SECTION | COUNTY | TOTAL SHEETS | SHEET NO. |
|---------------------------|------------------|--------|--------------------|-----------|
| • | D9 SAFETY 2014-2 | •• | 17 | 14 |
| | | | CONTRACT NO. 78396 | |
| ILLINOIS FED. AID PROJECT | | | | |

ENTRANCE AND SIDE ROAD DETAILS

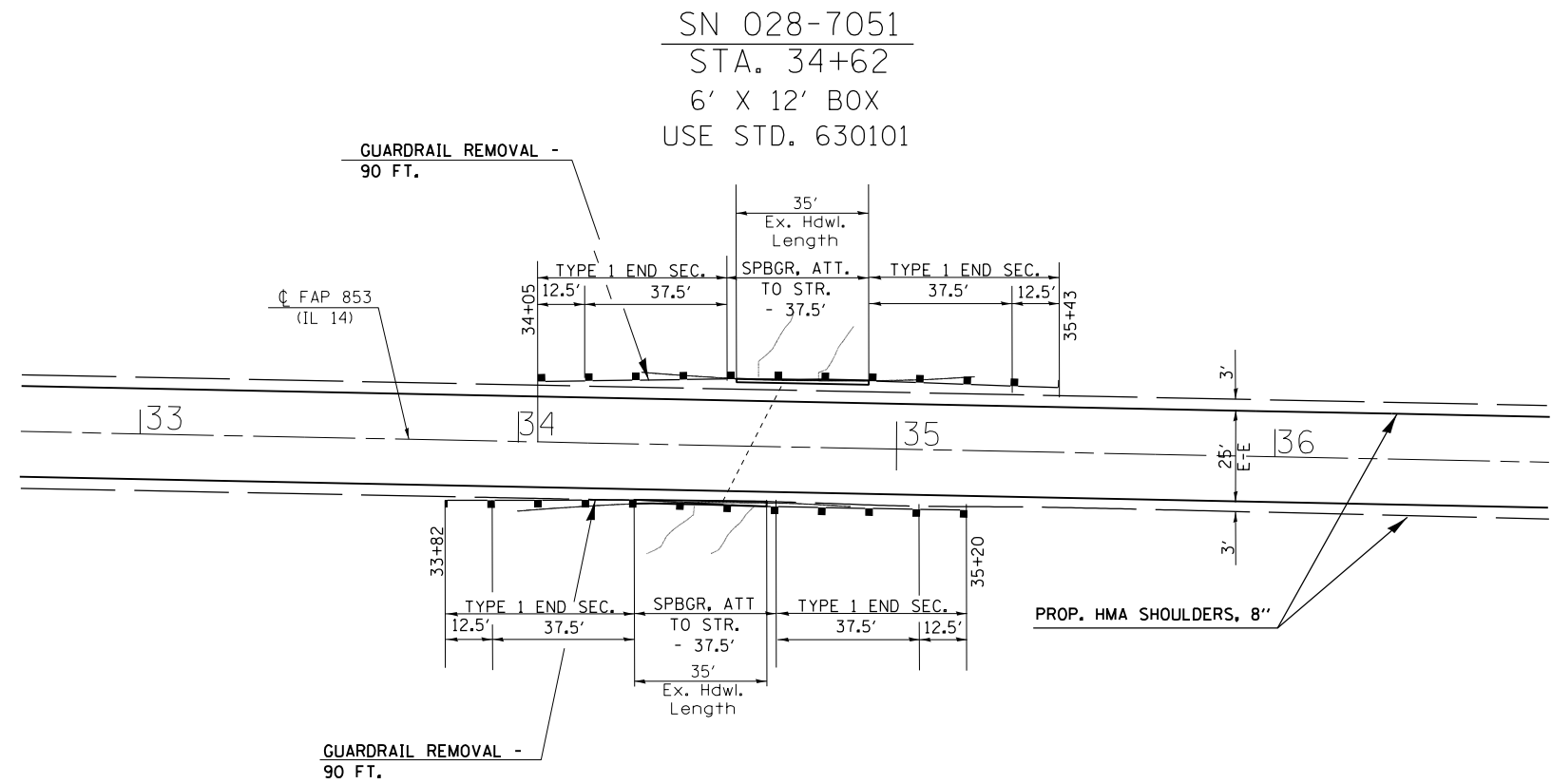
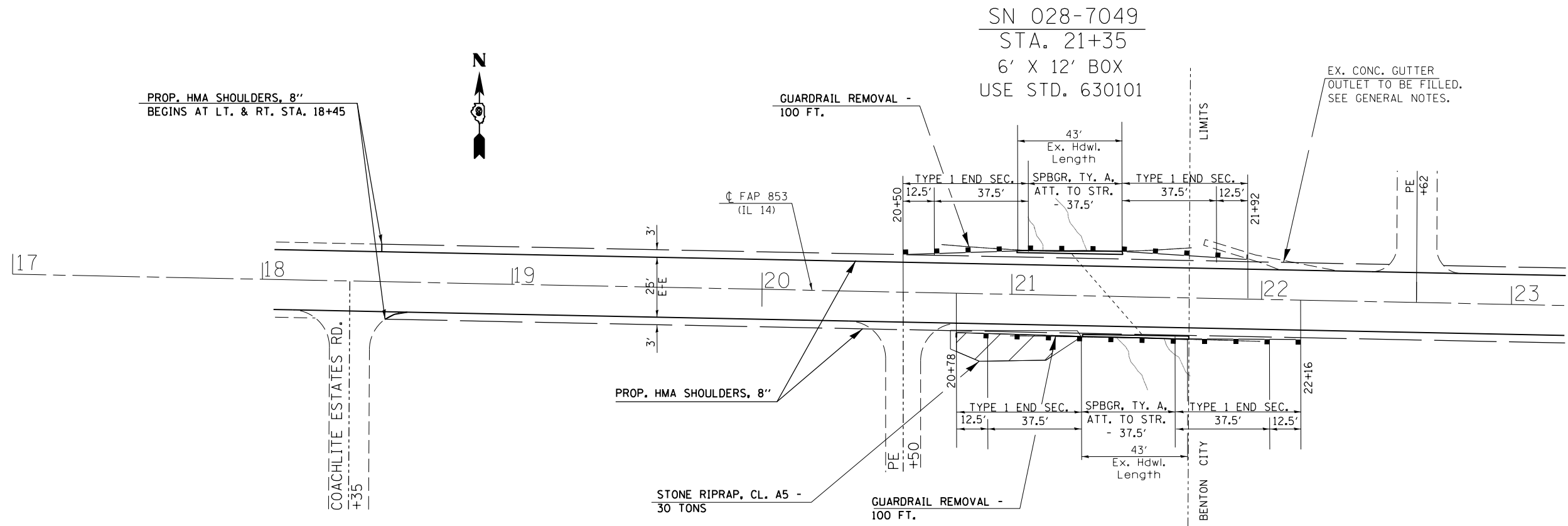


GENERAL NOTES

1. CONSTRUCT HOT-MIX ASPHALT SHOULDER THROUGH AGGREGATE ENTRANCE OR SIDE ROADS. IF THE ENTRANCE OR SIDE ROAD IS CONCRETE OR HMA, THEN PLACE SHOULDER UP TO EDGE OF THE ENTRANCE OR SIDE ROAD PAVEMENT.
2. THE MATERIAL THAT IS REMOVED TO PLACE THE SHOULDER SHALL BE WASTED ON THE FORESLOPE AND GRADED BACK TO THE EDGE OF THE PROPOSED SHOULDER. DO NOT PLACE WASTE MATERIAL ONTO EXISTING ENTRANCES, SIDE ROADS OR ON MAINTAINED LAWNS.

• VARIOUS ROUTES
•• VARIOUS COUNTIES

| | | | | | | | | | | | |
|--|------------------------------|------------|-----------|---|---------------------------------------|--------------------|------------------|--------|--------------|-----------|---------|
| FILE NAME = | USER NAME = mccordkr | DESIGNED - | REVISED - | STATE OF ILLINOIS DEPARTMENT OF TRANSPORTATION | ENTRANCE AND SIDE ROAD DETAILS | F.A. RTE. | SECTION | COUNTY | TOTAL SHEETS | SHEET NO. | |
| ci:\pwork\pwork\mccordkr\0371602\78396 | sh-t-plan.dgn | DRAWN - | REVISED - | | | • | D9 SAFETY 2014-2 | •• | 17 | 15 | |
| Default | PLOT SCALE = 100.0000' / in. | CHECKED - | REVISED - | | | CONTRACT NO. 78396 | | | | | |
| | PLOT DATE = 3/20/2014 | DATE - | REVISED - | | | SCALE: | SHEET | OF | SHEETS | STA. | TO STA. |



| | | | |
|--|------------------------------|------------|-----------|
| FILE NAME = | USER NAME = mccordkr | DESIGNED - | REVISED - |
| e:\pwwork\pwwork\mccordkr\0371602\78396-sh1-plan.dgn | | DRAWN - | REVISED - |
| Default | PLOT SCALE = 100.0000' / in. | CHECKED - | REVISED - |
| | PLOT DATE = 3/20/2014 | DATE - | REVISED - |

**STATE OF ILLINOIS
DEPARTMENT OF TRANSPORTATION**

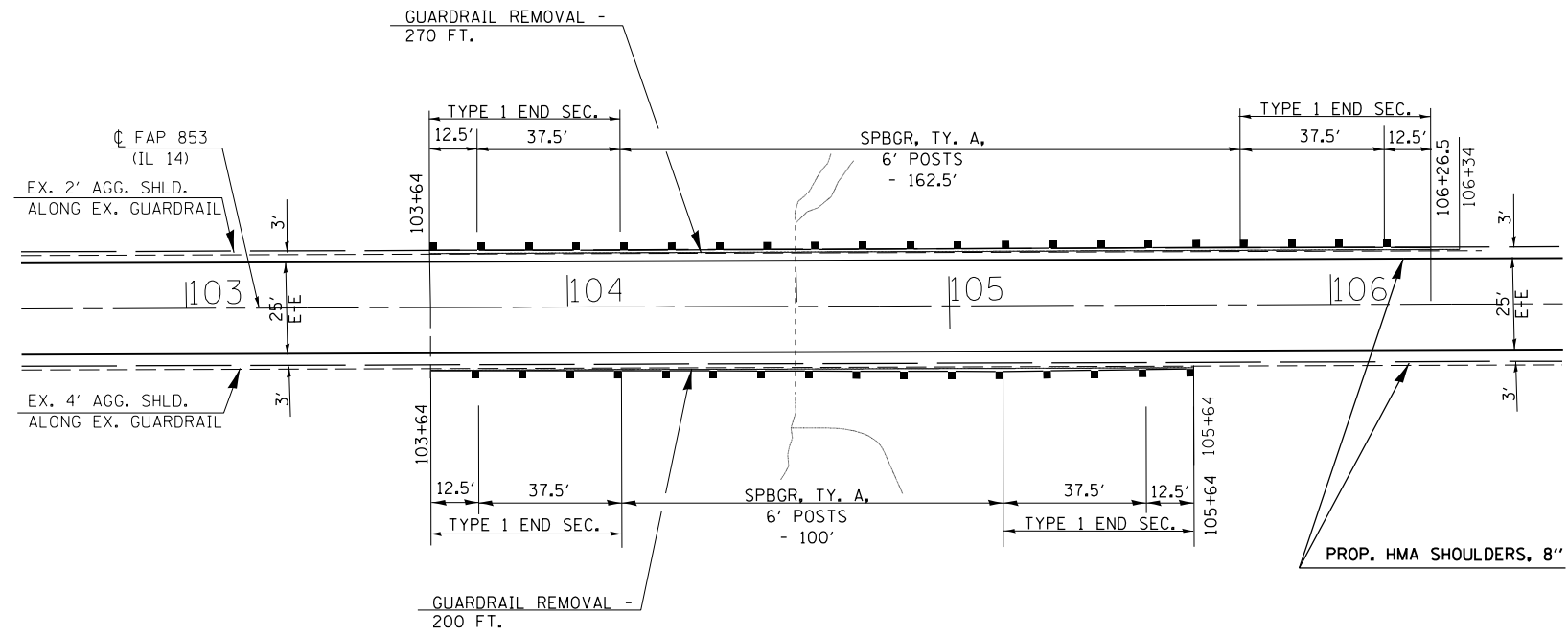
**GUARDRAIL DETAILS -
SN 028-7049 & SN 028-7051**

SCALE: SHEET OF SHEETS STA. TO STA.

| | | | | |
|---------------------------|------------------|--------|--------------------|-----------|
| F.A. RTE. | SECTION | COUNTY | TOTAL SHEETS | SHEET NO. |
| • | D9 SAFETY 2014-2 | •• | 17 | 16 |
| | | | CONTRACT NO. 78396 | |
| ILLINOIS FED. AID PROJECT | | | | |

• VARIOUS ROUTES
•• VARIOUS COUNTIES

STA. 104+60
 Ex. 18" PCC Pipe
 USE STD. 630101



- VARIOUS ROUTES
- VARIOUS COUNTIES

| | | | |
|--|------------------------------|------------|-----------|
| FILE NAME = | USER NAME = mcoordkr | DESIGNED - | REVISED - |
| c:\pwwork\pwwork\mcoordkr\0371602\78396-sh1-plan.dgn | | DRAWN - | REVISED - |
| Default | PLOT SCALE = 100.0000' / in. | CHECKED - | REVISED - |
| | PLOT DATE = 3/20/2014 | DATE - | REVISED - |

STATE OF ILLINOIS
 DEPARTMENT OF TRANSPORTATION

GUARDRAIL DETAILS -
 STA. 104 + 60

SCALE: SHEET OF SHEETS STA. TO STA.

| F.A. RTE. | SECTION | COUNTY | TOTAL SHEETS | SHEET NO. |
|---------------------------|------------------|--------|--------------------|-----------|
| • | D9 SAFETY 2014-2 | •• | 17 | 17 |
| | | | CONTRACT NO. 78396 | |
| ILLINOIS FED. AID PROJECT | | | | |