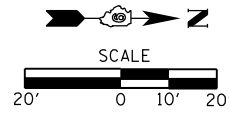


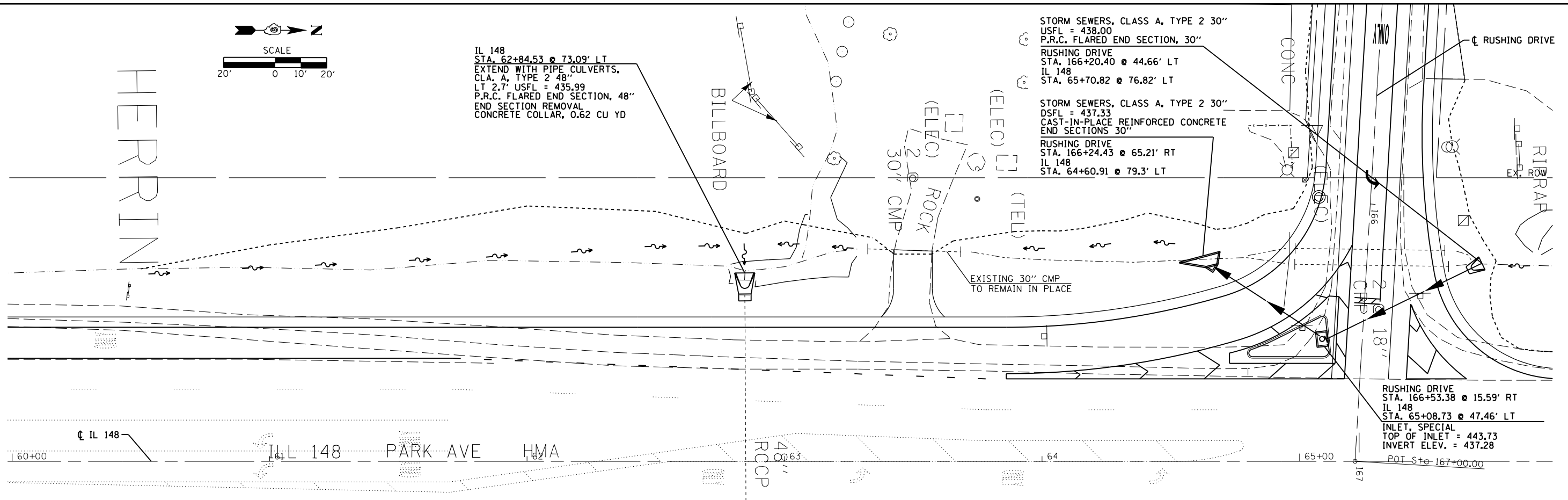
PLAN	SURVEYED	DATE
	PLOTTED	BY
	NOTED	
	CHECKED	
	FILED	
	NO.	



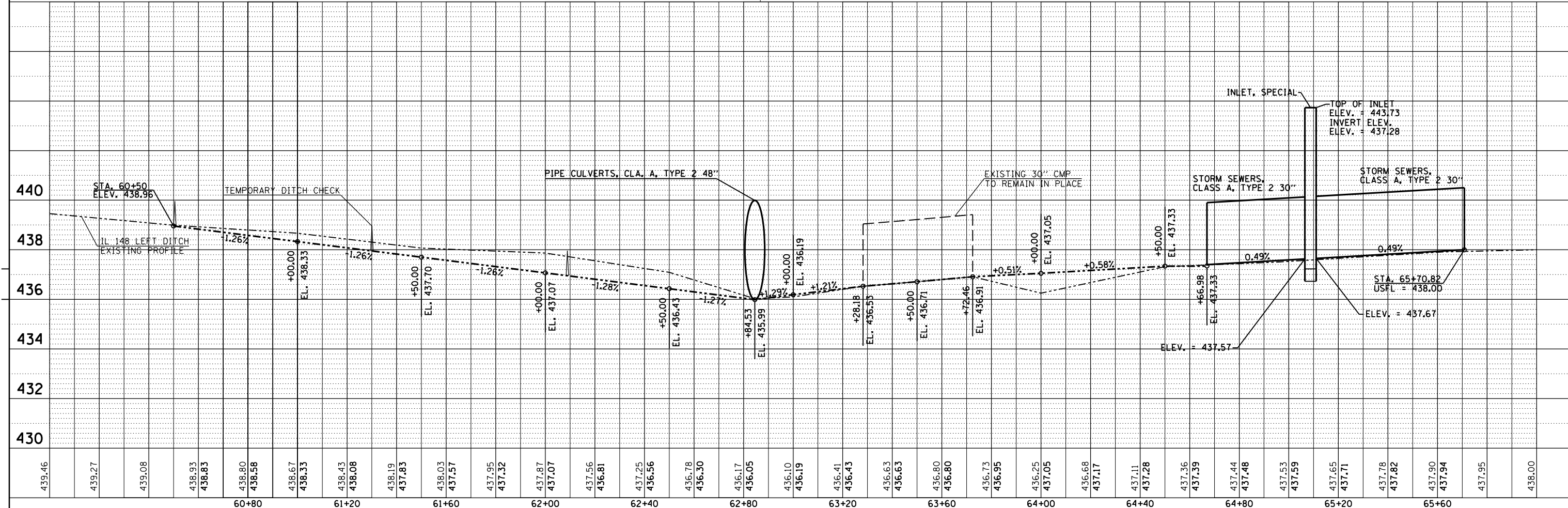
IL 148  
 STA. 62+84.53 @ 73.09' LT  
 EXTEND WITH PIPE CULVERTS,  
 CL. A, TYPE 2 48"  
 LT 2.7' USFL = 435.99  
 P.R.C. FLARED END SECTION, 48"  
 END SECTION REMOVAL  
 CONCRETE COLLAR, 0.62 CU YD

STORM SEWERS, CLASS A, TYPE 2 30"  
 USFL = 438.00  
 P.R.C. FLARED END SECTION, 30"  
 RUSHING DRIVE  
 STA. 166+20.40 @ 44.66' LT  
 IL 148  
 STA. 65+70.82 @ 76.82' LT

STORM SEWERS, CLASS A, TYPE 2 30"  
 DSFL = 437.33  
 CAST-IN-PLACE REINFORCED CONCRETE  
 END SECTIONS 30"  
 RUSHING DRIVE  
 STA. 166+24.43 @ 65.21' RT  
 IL 148  
 STA. 64+60.91 @ 79.3' LT



PROFILE	SURVEYED	DATE
	PLOTTED	BY
	NOTED	
	CHECKED	
	FILED	
	NO.	



FILE NAME =	USER NAME = \$USER\$	DESIGNED -	REVISED -	<b>STATE OF ILLINOIS          DEPARTMENT OF TRANSPORTATION</b>	<b>DRAINAGE PROFILE          IL 148 LEFTSIDE DITCH</b>	F.A.P. RTF.	SECTION	COUNTY	TOTAL SHEETS	SHEET NO.	
c:\pwork\pwork\kellykd\0374570\78402	shh\p\p\p\p\p\p	DRAWN -	REVISED -			726	(1-2) N-3	WILLIAMSON	50	20	
\$MODELNAME\$	PLOT SCALE = 40.0000' / in.	CHECKED -	REVISED -			CONTRACT NO. 78402					
	PLOT DATE = 3/20/2014	DATE -	REVISED -			ILLINOIS FED. AID PROJECT					