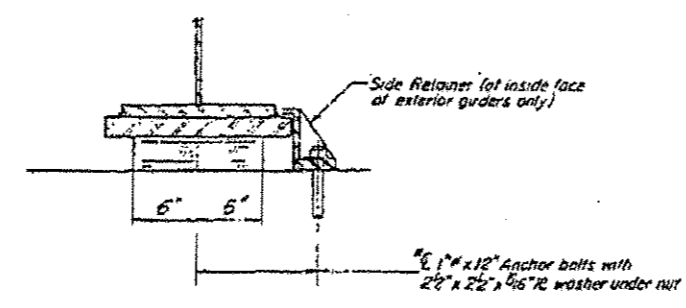
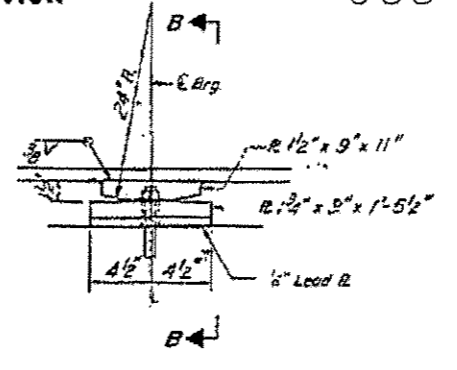


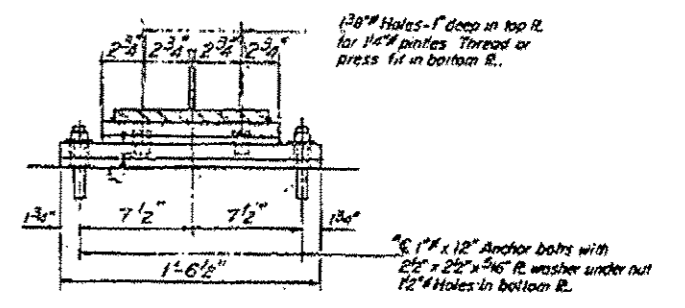
SECTION AT ABUT.



SECTION A-A



ELEVATION AT PIER



SECTION B-B

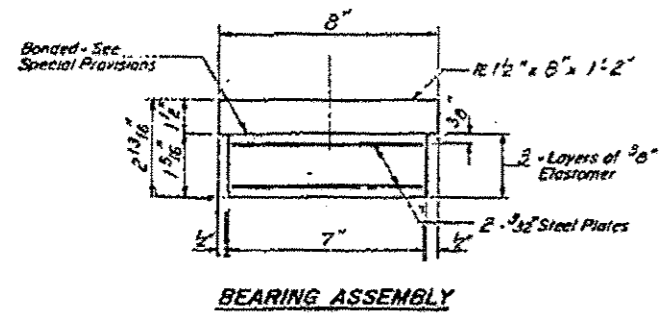
TYPE I ELASTOMERIC EXP. BRG.

FIXED BEARING

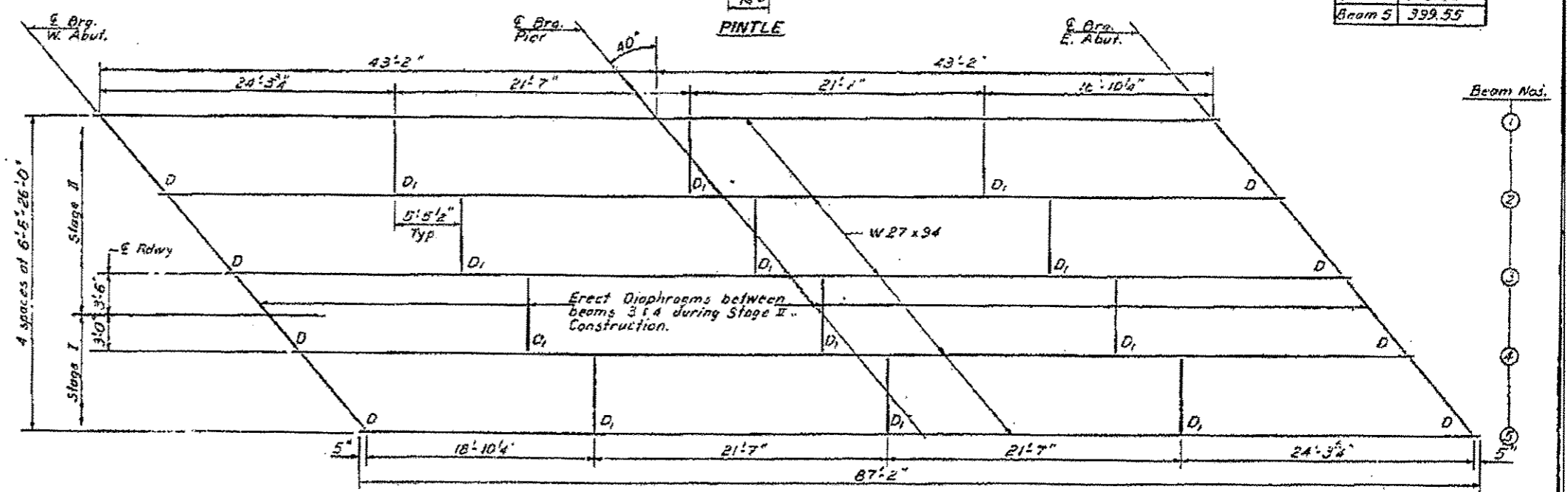
TOP OF BEAM ELEVATIONS

Beam 1	398.56
Beam 2	396.81
Beam 3	399.05
Beam 4	399.30
Beam 5	399.55

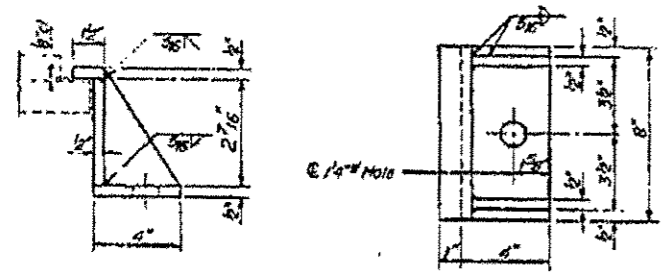
Note: After beams have been erected holes of expansion bearings shall be drilled and anchor bolts grouted in place. Anchor bolts at fixed bearings may be bolted into the masonry.



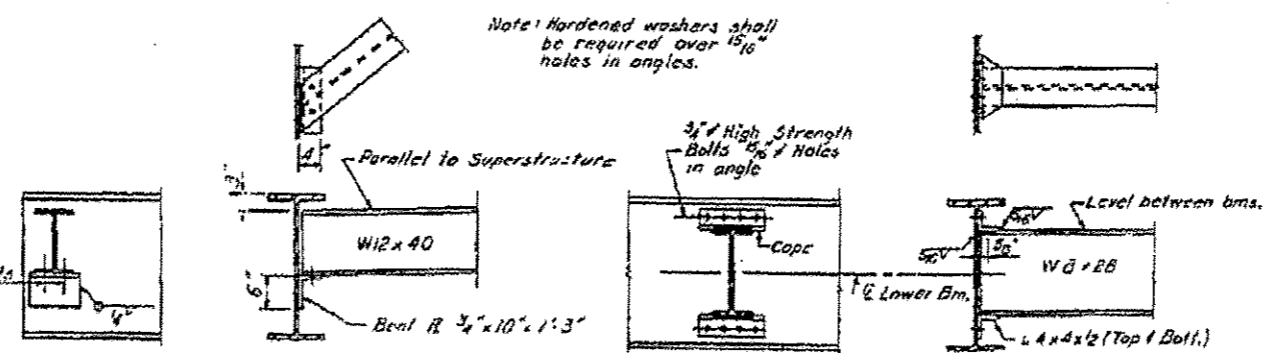
BEARING ASSEMBLY



FRAMING PLAN



SIDE RETAINER



DIAPHRAGM D

DIAPHRAGM D1

INTERIOR BEAM MOMENT TABLE

	Abut.	Pier
I (k-ft)	3270	3270
Q (k-ft)	0.9707	0.9707
M <sub>0</sub> (k-ft)	127.01	226.87
M <sub>1</sub> (k-ft)	238.49	176.31
Imp. (k-ft)	71.55	52.89
M <sub>max</sub> (k-ft)	437.05	456.07
F <sub>s</sub> (k-ft)	21.38	22.52

INTERIOR BEAM REACTION TABLE

	Abut.	Pier
R <sub>B</sub> (k)	15.74	52.46
R <sub>4</sub> (k)	91.56	39.82
Imp. (k)	9.47	11.95
Total (k)	56.77	104.23

DESIGNED: *[Signature]*  
CHECKED: *[Signature]*  
DRAWN: R. P. Summer  
CHECKED: *[Signature]*

EXAMINED: *[Signature]*  
APPROVED: *[Signature]*  
DIRECTOR OF HIGHWAYS

STRUCTURAL STEEL  
F.A. RT. 778 SEC. 3B-DR  
HARDIN COUNTY  
STA. 783+80.00

FOR INFORMATION ONLY