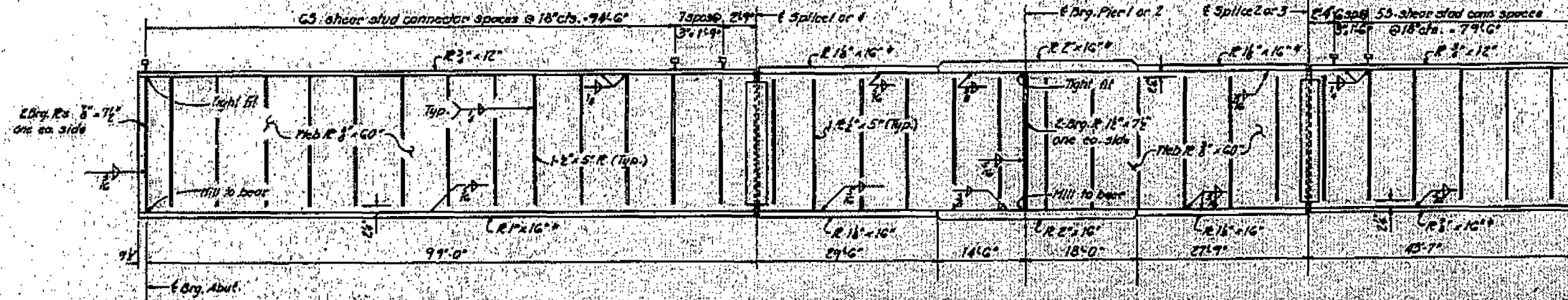
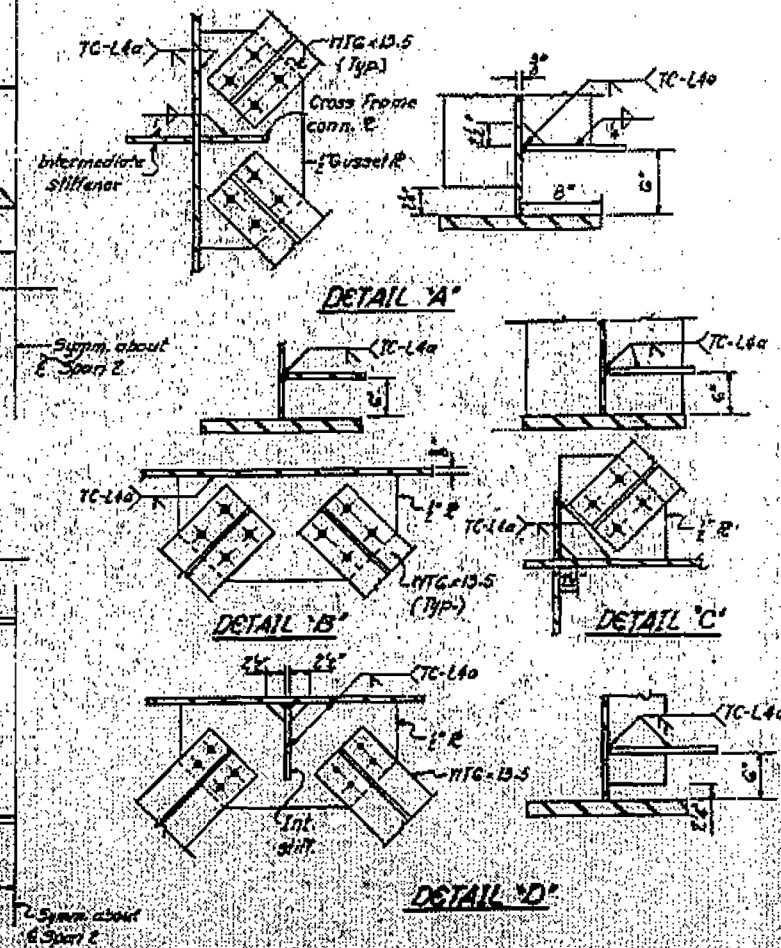
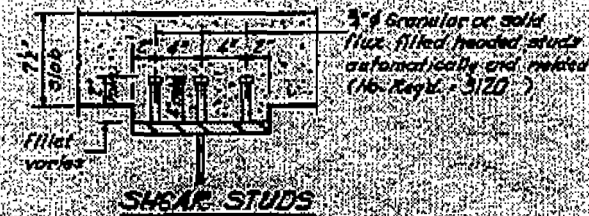


HALF FRAMING PLAN



HALF ELEVATION

Note:
The main load carrying member components subject to tensile stress shall conform to the supplemental requirements for North Business Zone C. These components are the tension flanges (identified with checkmark), webs and all splice plate material of the steel girders.



DESIGNED: K. J. ...	DATE: 3/21/2014
DRAWN: ...	APPROVED: ...
CHECKED: ...	DATE: 3/21/2014

FOR INFORMATION ONLY

STRUCTURAL STEEL
PART 100 500-10-10
GALLATIN COUNTY
STA 348+00.00

FILE NAME: c:\pwwork\p1\dot\dahmer.je\0382426\78408-sht-plen.dgn	USER NAME = Dahmer.je	DESIGNED -	REVISED -	STATE OF ILLINOIS DEPARTMENT OF TRANSPORTATION	030-0021 IL 1 OVER SALINE RIVER	SCALE: SHEET OF SHEETS STA. TO STA.	F.A. RTE.	SECTION	COUNTY	TOTAL SHEETS	SHEET NO.
	PLOT SCALE = 2.7375' / in.	CHECKED -	REVISED -				D9 BRIDGE PAINT 2014-1	*	13	9	
	Default	DATE -	REVISED -				CONTRACT NO. 78418				
	PLOT DATE = 3/21/2014	DATE -	REVISED -				ILLINOIS FED. AID PROJECT				