

STATE OF ILLINOIS  
DEPARTMENT OF TRANSPORTATION  
DIVISION OF HIGHWAYS

**PROPOSED  
HIGHWAY PLANS**

IL 1 & IL 34 (FAP 782 & FAP 778)  
D9 BRIDGE PAINT 2014-1  
BRIDGE PAINTING  
GALLATIN & HARDIN COUNTIES

C-99-044-14

F.A. RTE.	SECTION	COUNTY	TOTAL SHEETS	SHEET NO.
VAR. D9 BRIDGE PAINT 2014-1		ILLINOIS	13	1
CONTRACT NO. 78418			* GALLATIN & HARDIN	

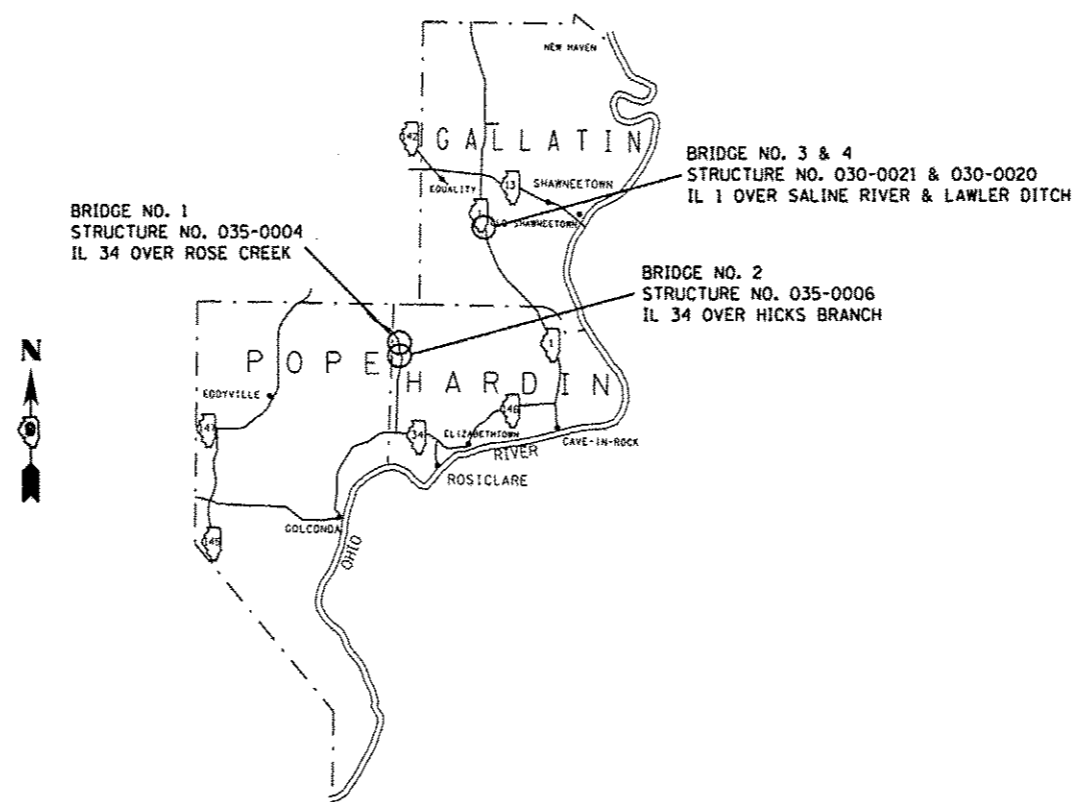
D-99-038-14



LOCATION OF SECTION INDICATED THUS: - [black box] -

FOR INDEX OF SHEETS, SEE SHEET NO. 2

- BRIDGE NO. 1**  
SN. 035-0004  
IL 34 2013 ADT=3100, 33% TRUCKS  
TOWNSHIP-COUNTY UNIT ROAD DISTRICT
- BRIDGE NO. 2**  
SN. 035-0006  
IL 34 2013 ADT=2800, 31% TRUCKS  
TOWNSHIP- COUNTY UNIT ROAD DISTRICT
- BRIDGE NO. 3**  
SN. 030-0021  
IL 1 2013 ADT=2100, 24% TRUCKS  
TOWNSHIP-EQUALITY
- BRIDGE NO. 4**  
SN. 030-0020  
IL 1 2013 ADT= 2100, 24% TRUCKS  
TOWNSHIP-EQUALITY



J.U.L.I.E.  
JOINT UTILITY LOCATION INFORMATION FOR EXCAVATION  
1-800-892-0123  
OR 811

PROJECT ENGINEER: JOHN DAHMER  
PROJECT MANAGER: DAVID PICHE (618) 351-5227

CONTRACT NO. 78418

STATE OF ILLINOIS  
DEPARTMENT OF TRANSPORTATION  
DIVISION OF HIGHWAYS

SUBMITTED March 18, 2014

Arthur J. Keenan  
DEPUTY DIRECTOR OF HIGHWAYS, REGION ENGINEER

May 9, 2014  
John D. Baranzelli, P.E.  
acting ENGINEER OF DESIGN AND ENVIRONMENT

May 9, 2014  
Omer Osman, P.E.  
DIRECTOR OF HIGHWAYS, CHIEF ENGINEER

**PRINTED BY THE AUTHORITY  
OF THE STATE OF ILLINOIS**

**GENERAL NOTES**

**INDEX OF SHEETS**

SHEET NO.	DESCRIPTION
1	COVER SHEET
2	INDEX OF SHEETS, HIGHWAY STANDARDS, GENERAL NOTES
3	SUMMARY OF QUANTITIES
4, 5	SN 035-0004 STRUCTURE INFORMATION
6, 7	SN 035-0006 STRUCTURE INFORMATION
8-10	SN 030-0021 STRUCTURE INFORMATION
11-13	SN 030-0020 STRUCTURE INFORMATION

EXTRA TRAFFIC CONTROL DEVICES MAY BE REQUIRED TO CHANNEL TRAFFIC AT COMMERCIAL AND/OR PRIVATE ENTRANCE AS DIRECTED BY THE ENGINEER. ALL TRAFFIC CONTROL DEVICES ARE INCLUDED IN THE COST OF THE TRAFFIC CONTROL AND PROTECTION STANDARD USED AT THE SITE, AND WILL NOT BE PAID FOR SEPARATELY.

THE CONTRACTOR IS REQUIRED TO BE SSPC QP1 CERTIFIED.

PLAN DIMENSIONS AND DETAILS RELATIVE TO EXISTING PLANS ARE SUBJECT TO ROUTINE VARIATIONS. THE CONTRACTOR SHALL FIELD VERIFY EXISTING DIMENSIONS AND DETAILS AFFECTING NEW CONSTRUCTION AND MAKE NECESSARY APPROVED ADJUSTMENTS PRIOR TO CONSTRUCTION OR ORDERING OF MATERIALS. SUCH VARIATIONS SHALL NOT BE CAUSE FOR ADDITIONAL COMPENSATION FOR A CHANGE IN SCOPE OF THE WORK, HOWEVER, THE CONTRACTOR WILL BE PAID FOR THE QUANTITY ACTUALLY FURNISHED AT THE UNIT PRICE BID FOR THE WORK.

TRAFFIC CONTROL SIGNS SHALL BE PLACED SO THAT THEY DO NOT INTERFERE WITH EXISTING SIGNS OR FLASHING BEACONS. THE DIMENSIONS BETWEEN SIGNS MAY BE MODIFIED SLIGHTLY SO AS TO AVOID CONFLICTS WITH EXISTING SIDE ROADS, COMMERCIAL ENTRANCES, AND PRIVATE ENTRANCES. THE BUREAU OF OPERATIONS SHOULD APPROVE FINAL PLACEMENT OF TRAFFIC CONTROL SIGNING.

IN ADDITION TO THE REQUIREMENTS OF ARTICLE 107.16 THE CONTRACTOR SHALL PROTECT THE SURFACE OF ALL BRIDGE DECKS AND BRIDGE APPROACH PAVEMENTS IN A MANNER SATISFACTORY TO THE ENGINEER BEFORE ANY EQUIPMENT IS ALLOWED TO CROSS THE STRUCTURE. PROTECTION SHALL BE PROVIDED FOR ALL EQUIPMENT AS DEFINED IN ARTICLE 101.16 REGARDLESS IF TRACK MOUNTED OR WHEELED.

CLEANING AND PAINTING OF ALL EXISTING STRUCTURAL STEEL SHALL BE AS SPECIFIED IN THE SPECIAL PROVISIONS FOR "CLEANING AND PAINTING EXISTING STEEL STRUCTURES" AND "CONTAINMENT AND DISPOSAL OF NON-LEAD PAINT CLEANING RESIDUES." ALL BEAMS, BEARINGS, AND OTHER STRUCTURAL STEEL WITHIN 5 FT. (MEASURED ALONG THE BEAM) OF EITHER SIDE OF SPECIFIED DECK JOINTS SHALL BE CLEANED PER NEAR WHITE BLAST CLEANING - SSPC-SP10 AND PAINTED ACCORDING TO THE REQUIREMENTS OF PAINT SYSTEM 1 - OZ/E/U. THE COLOR OF THE FINAL FINISH COAT FOR BOTH INTERIOR AND EXTERIOR SURFACES SHALL BE REDDISH BROWN, MUNSELL NO. 2.5YR 3/4.

**STANDARDS**

- 701101-04 OFF-RD OPERATIONS, MULTILANE, 15' (4.5 m) TO 24" (600mm) FROM PAVEMENT EDGE
- 701106-02 OFF-RD OPERATIONS, MULTILANE, MORE THAN 15' (4.5 m) AWAY
- 701201-04 LANE CLOSURE, 2L, 2W, DAY-ONLY
- 701901-03 TRAFFIC CONTROL DEVICES

Prepared By:	<i>Joe Zlatos</i> DISTRICT STUDIES & PLANS ENGINEER
Examined By:	<i>[Signature]</i> DISTRICT LAND ACQUISITION ENGINEER
Examined By:	<i>[Signature]</i> DISTRICT PROGRAM DEVELOPMENT ENGINEER
Examined By:	<i>[Signature]</i> DISTRICT OPERATIONS ENGINEER
Examined By:	<i>[Signature]</i> DISTRICT PROJECT IMPLEMENTATION ENGINEER
Examined By:	<i>[Signature]</i> DISTRICT CONSTRUCTION ENGINEER
Examined By:	<i>[Signature]</i> DISTRICT MATERIALS ENGINEER

FILE NAME *	USER NAME * Dahmerje	DESIGNED -	REVISED -	<b>STATE OF ILLINOIS DEPARTMENT OF TRANSPORTATION</b>	<b>INDEX OF SHEETS, STANDARDS, GENERAL NOTES</b>			F.A. RTE.	SECTION	COUNTY	TOTAL SHEETS	SHEET NO.
Default	09-ahf-plen.dgn	DRAWN -	REVISED -					VAR.	09 BRIDGE PAINT 2014-1	*	13	2
	PLOT SCALE * 100.0000' / in.	CHECKED -	REVISED -		SCALE:	SHEET	OF	SHEETS	STA.	TO STA.	CONTRACT NO. 78418	
	PLOT DATE * 3/13/2014	DATE -	REVISED -		ILLINOIS FED. AID PROJECT							

# SUMMARY OF QUANTITIES

	HARDIN COUNTY		GALLATIN COUNTY	
FUNDING:	100% STATE			
LOCATION:	RURAL	RURAL	RURAL	RURAL
ROUTE:	IL 34	IL 34	IL 1	IL 1

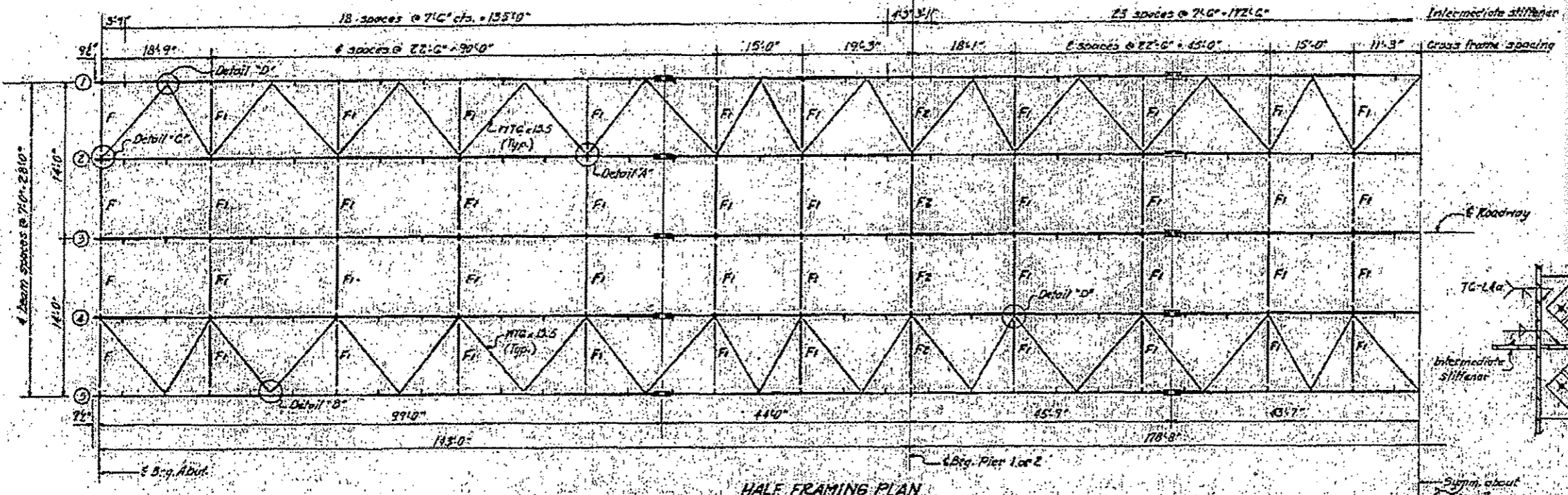
CODE NUMBER	ITEM DESCRIPTION	UNIT	TOTAL QUANTITY	100% STATE			
				BRIDGE NO. 1 035-0004	BRIDGE NO. 2 035-0006	BRIDGE NO. 3 030-0021	BRIDGE NO. 4 030-0020
67000400	ENGINEER'S FIELD OFFICE, TYPE A	CAL MO	3	0.75	0.75	0.75	0.75
67100100	MOBILIZATION	L SUM	1	0.25	0.25	0.25	0.25
70100450	TRAFFIC CONTROL AND PROTECTION, STANDARD 701201	L SUM	1	0.25	0.25	0.25	0.25
70106800	CHANGEABLE MESSAGE SIGN	CAL MO	4	1	1	1	1
Z0007114	CONTAINMENT AND DISPOSAL OF NON-LEAD PAINT CLEANING RESIDUES	L SUM	1	0.25	0.25	0.25	0.25
Z0010501	CLEANING AND PAINTING STEEL BRIDGE NO. 1	L SUM	1	1			
Z0010502	CLEANING AND PAINTING STEEL BRIDGE NO. 2	L SUM	1		1		
Z0010503	CLEANING AND PAINTING STEEL BRIDGE NO. 3	L SUM	1			1	
Z0010504	CLEANING AND PAINTING STEEL BRIDGE NO. 4	L SUM	1				1

9

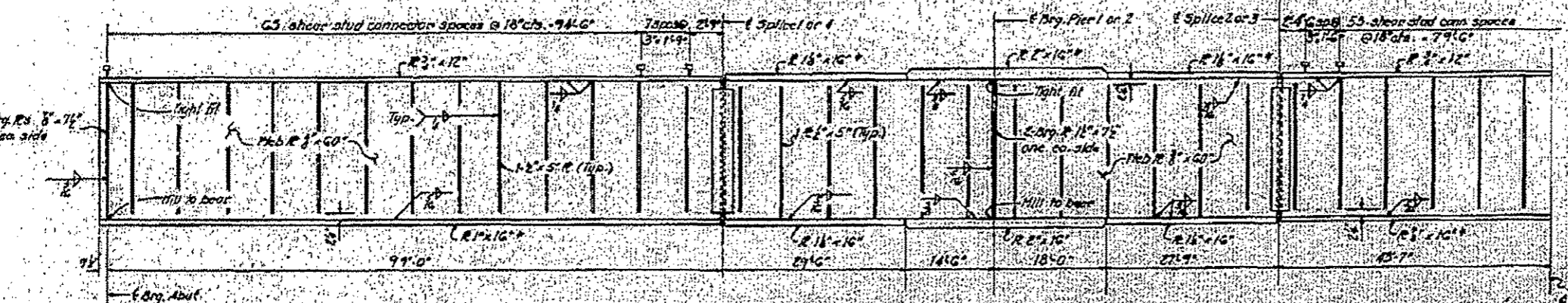
STATE OF ILLINOIS  
DEPARTMENT OF TRANSPORTATION

030-0021

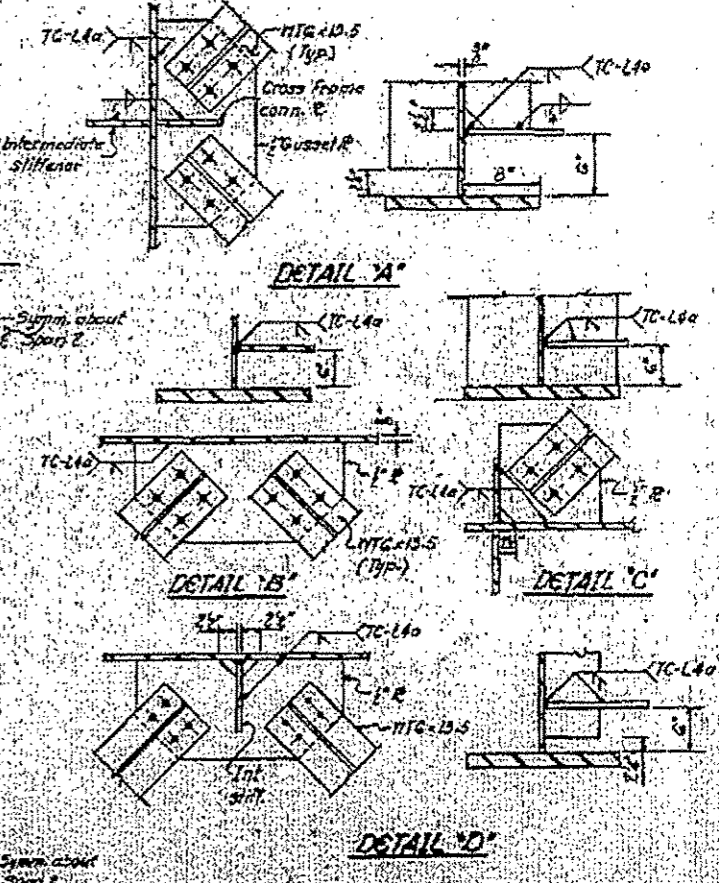
DATE	REVISED	BY	NO.	REASON	SHEET NO.
11-18-12		Gallatin	74		13
File Name: C:\pwork\p1dot\dahmerja\0302426\78\8-sht-plan.dgn Plot Scale: 2.7375 / in. Plot Date: 3/21/2014					CONTRACT NO. 78418 ILLINOIS FED. AID PROJECT



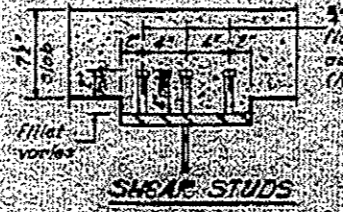
**HALF FRAMING PLAN**



**HALF ELEVATION**



Note:  
The main load carrying members analyzed to meet stress shall conform to the supplemental requirements for Match Business Zone. These components are the tension flanges (identified with orange), webs and all appendage material of the steel girders.



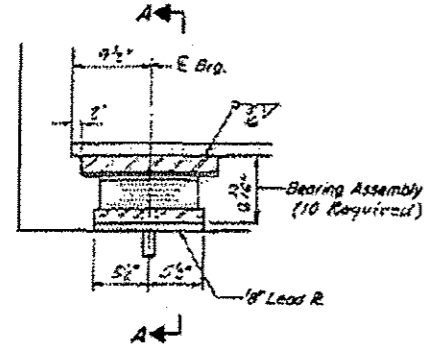
**SHEAR STUDS**

DESIGNED	DRAWN	CHECKED	APPROVED
[Signature]	[Signature]	[Signature]	[Signature]

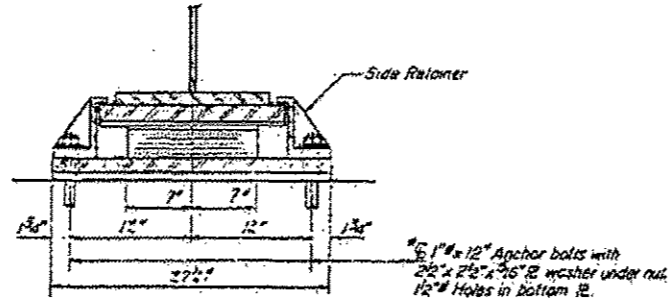
**STRUCTURAL STEEL**  
**PART 18 SECTION 18-1B**  
**GALLATIN COUNTY**  
**STA. 348+00.00**

**FOR INFORMATION ONLY**

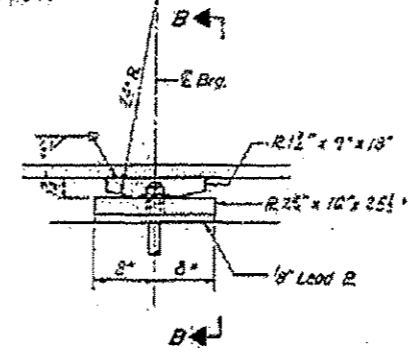
FILE NAME: C:\pwork\p1dot\dahmerja\0302426\78\8-sht-plan.dgn	USER NAME: Dahmerja	DESIGNED: -	REVISIONS: -	STATE OF ILLINOIS DEPARTMENT OF TRANSPORTATION	030-0021 IL 1 OVER SALINE RIVER	SCALE: 1" = 12'-0"	SHEET OF SHEETS STA. TO STA.	SHEET NO. 13	TOTAL SHEETS 13	SHEET NO. 9
--	---------------------	-------------	--------------	---	------------------------------------	--------------------	------------------------------	--------------	-----------------	-------------



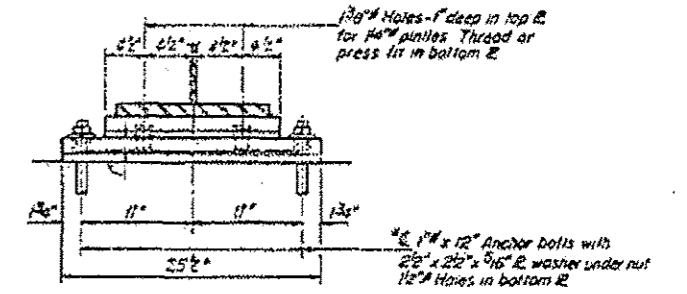
SECTION AT ABUT.



SECTION A-A

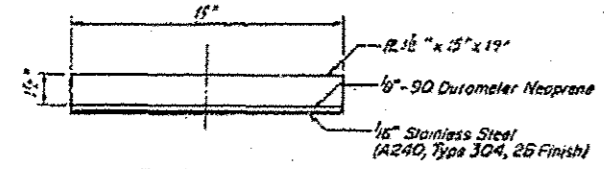


ELEVATION AT PIER

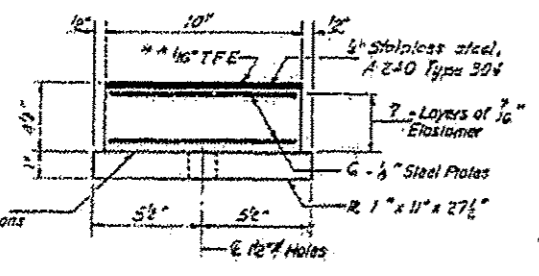


SECTION B-B

**TYPE II TFE ELASTOMERIC EXP BRG AT ABUTMENTS**

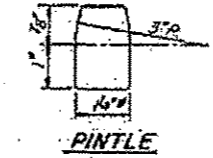


TOP BEARING ASSEMBLY



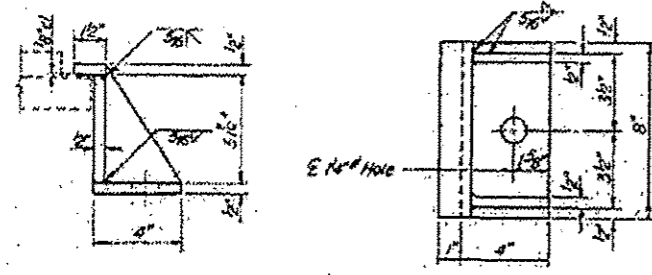
BOTTOM BEARING ASSEMBLY

Note: After beams have been erected holes of expansion bearings shall be drilled and anchor bolts grouted in place. Anchor bolts of fixed bearings may be built into the masonry.



PINTLE

Note: The 1/16" TFE sheet shall be bonded directly to the top steel laminate sheet with a two-component, medium viscosity epoxy resin, conforming to the requirements of the Federal Specification HMM-A-154, Type I. The bond agent shall be applied on the full area of the contact surfaces.



SIDE RETAINER  
10 Required

DESIGNED <i>[Signature]</i>	EXAMINED <i>[Signature]</i>
CHECKED <i>[Signature]</i>	PAINTED <i>[Signature]</i>
DRAWN <i>[Signature]</i>	APPROVED <i>[Signature]</i>
CHECKED <i>[Signature]</i>	SECTION OF PROJECT

BEARING-DETAILS  
F.A.R.T. 782 SEC. 113-1B  
GALLATIN COUNTY  
STA. 348+30.00  
113-1B  
COUNT

FOR INFORMATION ONLY

FILE NAME c:\pwwork\pwwork\dahmarjo\d0302426178	USER NAME Dahmarjo	DESIGNED -	REVISED -	STATE OF ILLINOIS DEPARTMENT OF TRANSPORTATION	030-0021 IL 1 OVER SALINE RIVER		F.A. RTE.	SECTION	COUNTY	TOTAL SHEETS	SHEET NO.	
Default	B-sht-plan.dgn	DRAWN -	REVISED -		SCALE 2.7296 / in.	CHECKED -	REVISED -	VAR.	09 BRIDGE PAINT 2014-1	*	13	10
	PLOT DATE 3/21/2014	DATE -	REVISED -		SCALE	SHEET	OF SHEETS	STA.	TO STA.	CONTRACT NO. 78418		

B.M.: R.R. Spike in Power Pole 39' Left Sta. 337+56  
Elev. 360.71.  
Existing Structure: #030-0005 Built as S.B.I.  
Rte. 140, Sec. 113-B, at Sta. 331+85 in 1931. The  
existing 3 span R.C.D.G. superstructure on R.C.  
substructure shall be removed by the Contractor  
before the new structure is built.  
No salvage.

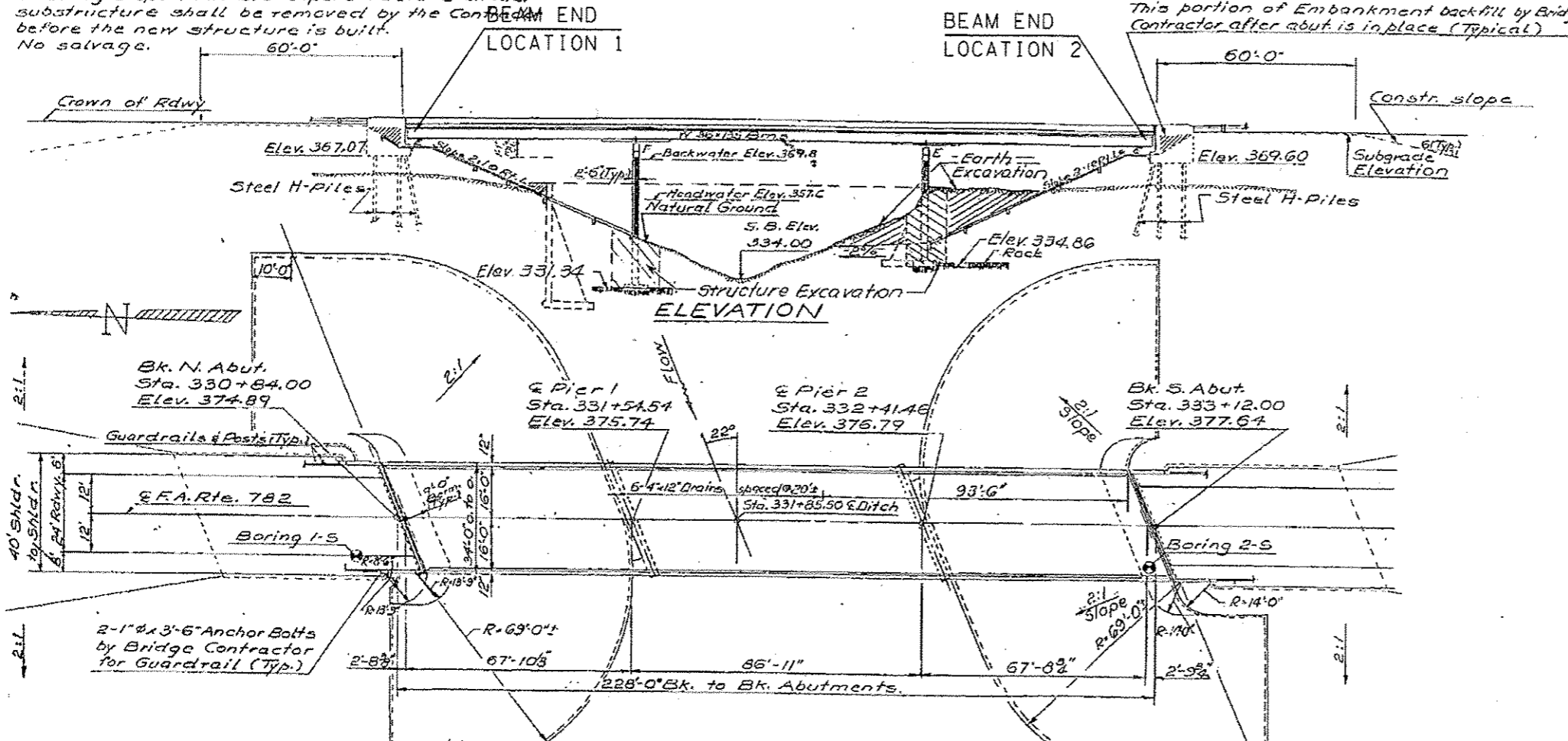
STATE OF ILLINOIS  
DEPARTMENT OF TRANSPORTATION

030-0020

ROUTE NO.	SECTION	PROJECT	SHEET NO.	SHEET TOTAL
782	113-B	Gallatin	74	21
SHEET NO. / 12 SHEETS				

GENERAL NOTES

Fasteners shall be high strength bolts. Bolts 3/8", open holes 1/2", unless otherwise noted.  
Calculated weight of Structural Steel = 177,910 lbs.  
All structural steel shall be AASHTO: M 222 unpainted except expansion joint angles and attached bars which shall be AASHTO: M 183 and shop painted with two coats of basic lead silico chromate paint.  
Field welding of construction accessories will not be permitted to the bottom flange of beams or girders nor to the top flange for a distance equal to one-fourth the span length each way from the pier supports. Field welding in other areas will be permitted only when approved by the Engineer.  
Anchor bolts shall be set before bolting diaphragms over supports.  
Slope wall shall be reinforced with welded wire fabric 6"x6" mesh, weighing 58# per 100 sq. ft.  
Layout of slope walls may be varied in the field to suit ground conditions as directed by the Engineer.  
The Contractor shall drive one test pile in a permanent location at the North Abut. as directed by the Engineer before ordering the remainder of piles.  
Protective Coat shall be applied in accordance with Art. 503.12 of Standard Specifications.  
Reinf. bars shall conform to the requirements of AASHTO M 31 Grade 60.  
The embankment configuration shown shall be the minimum embankment that must be constructed prior to construction of the abutments.  
The concrete rail section above the mandatory construction joint at the top of the slab shall be constructed of Class X Concrete, except the aggregates shall conform to the requirements of Standard Specifications.  
The main load carrying member components subject to tensile stress shall conform to the Supplemental Requirements for Notch Toughness Zone 2. These components are the tension flanges, webs and all splice plate material of the steel girders or wide flange beams.  
For Boring Data see Proposal.



TOTAL BILL OF MATERIALS

Item	Unit	Super	Sub	Total
Class X Concrete	Cu. Yds	2361	2470	4831
Reinforcement Bars	Lbs.	25940	34470	60410
Structural Steel	L.S.			L.S.
Steel Piles (Steel HP10x22)	Lin. Ft.		786	786
Test Piles (Steel HP10x4E)	Each		1	1
Slope Wall (6")	Sq. Yds		2870	2870
Preformed Joint Sealer (2")	Lin. Ft.	37		37
Neoprene Expansion Joint (2")	Lin. Ft.	38		38
Structure Excavation	Cu. Yds.		395	395
Name Plate	Each		1	1
Protective Coat	Sq. Yds	972		972
Stud Shear Connectors	Each	2985		2985
Reinforcement Bars (epoxy coated)	Lbs.	35,570		35,570
Removal of Existing Structures	Each		1	1
Rock Excavation	Cu. Yds		8	8

STATION 331+85.50  
BUILT 197 BY  
STATE OF ILLINOIS  
F.A. RT. 782 SEC. 113-B-1

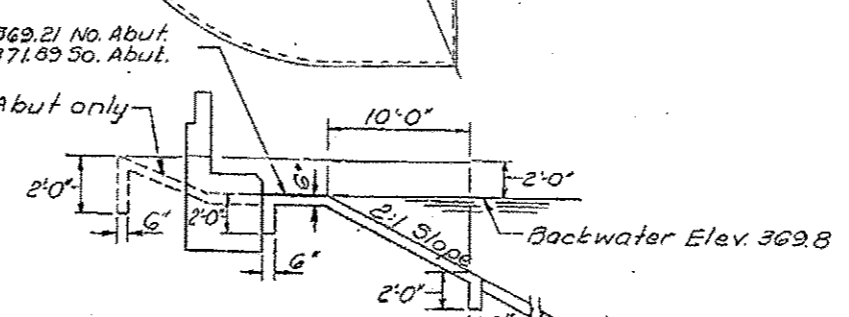
LOADING HS20  
\*STR. NO. 030-0005  
NAME PLATE  
See Std. 213  
\*Structure number to be  
supplied by District.

Sta. Equation:  
Sta. 330+00.00 Back +  
Sta. 330+02.30 Ahead  
Elev. 373.904 +1.207%  
Sta. Increase

PLAN

No. Abut only

Elev. 369.21 No. Abut.  
Elev. 371.89 So. Abut.



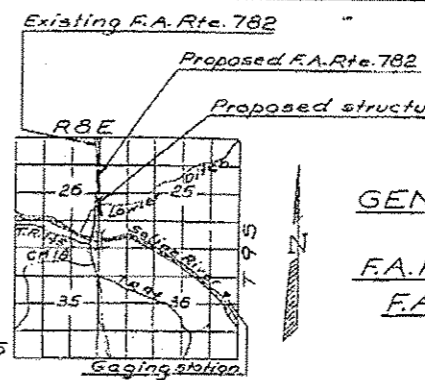
WATERWAY INFORMATION

	Lawler Ditch	Saline River	Both Structures
Drainage Area	3.32 <sup>mi</sup>	1022 <sup>mi</sup>	1025.32 <sup>mi</sup>
Required Opening	1690 <sup>ft</sup>	8190 <sup>ft</sup>	9880 <sup>ft</sup>
Proposed Opening	1690 <sup>ft</sup>	8190 <sup>ft</sup>	9880 <sup>ft</sup>
Headwater Elev. (50)	357.6	357.6	357.6
Q <sub>(50)</sub>	6046 c.f.s.	36154 c.f.s.	42200 c.f.s.
Headwater Elev. (100)	359.4	359.4	359.4
Q <sub>(100)</sub>	7013 c.f.s.	44687 c.f.s.	51700 c.f.s.
Backwater Elev. (50)	369.8	369.8	369.8
Created Head (50)			0.15'
Backwater Elev. (100)	372.4	372.4	372.4
Created Head (100)			0.23'

DESIGN STRESSES

fc = 3500 psi  
fy = 60,000 psi (Reinf.)  
fs = 27,000 psi (Struct.)  
n = 8.5

Loading HS20-44.  
Allow 25% a' for Future W.S.  
Design Specifications: 1973 AASHTO, 1974, 1975  
and 1976 Interim Specifications  
\*\* Epoxy Coated Reinf. Bars shall be used  
in the top layer of the slab.



PROF. PROFILE F.A. RTE. 782  
(@ E Rdwy.)

DESIGNED: [Signature]  
CHECKED: [Signature]  
DRAWN: F.M.  
CHECKED: [Signature]

EXAMINED: [Signature]  
PASSED: [Signature]  
APPROVED: [Signature]

GENERAL PLAN & ELEVATION  
F.A. RTE. 782 OVER LAWLER DITCH  
F.A. RTE. 782 SECTION 113-B-1

GALLATIN CO.  
STA. 331+85.50 (DITCH)

F.A. RTE.	SECTION	COUNTY	TOTAL SHEETS	SHEET NO.
VAR. 09	BRIDGE PAINT 2014-1	*	13	11
CONTRACT NO. 78418				

ILLINOIS FED. AID PROJECT

FILE NAME: [Path]  
USER NAME: Dohmerja  
DESIGNED: [Signature]  
DRAWN: VAR. 09 BRIDGE  
CHECKED: [Signature]  
DATE: [Date]

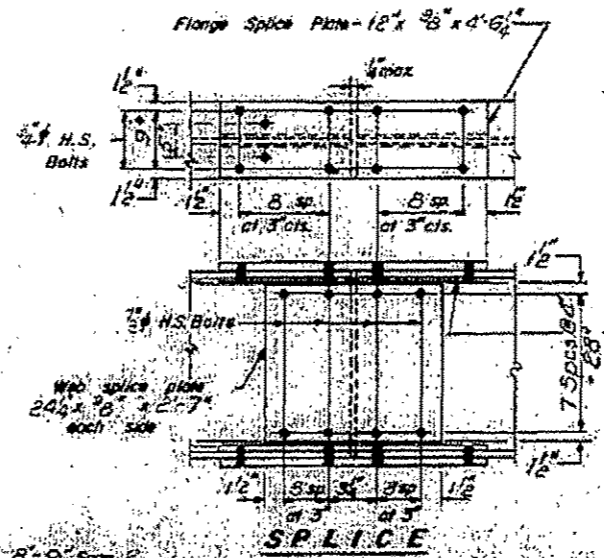
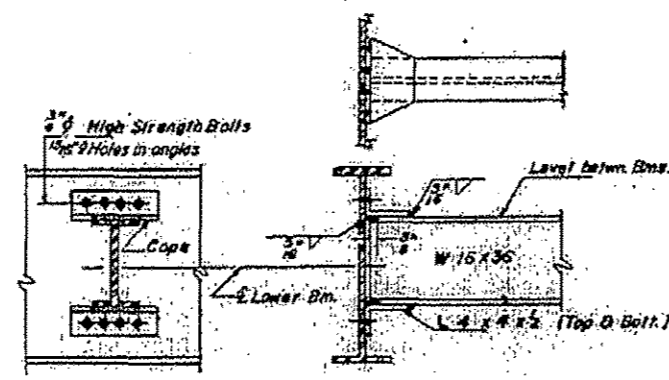
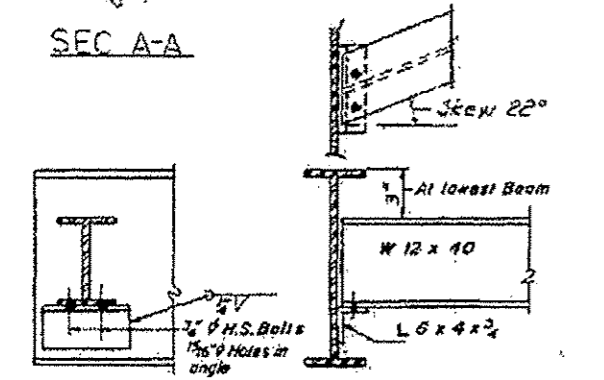
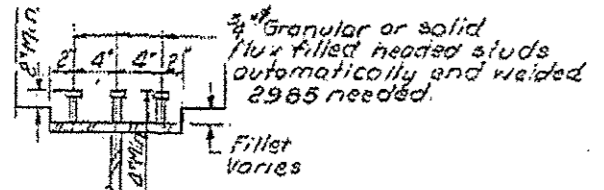
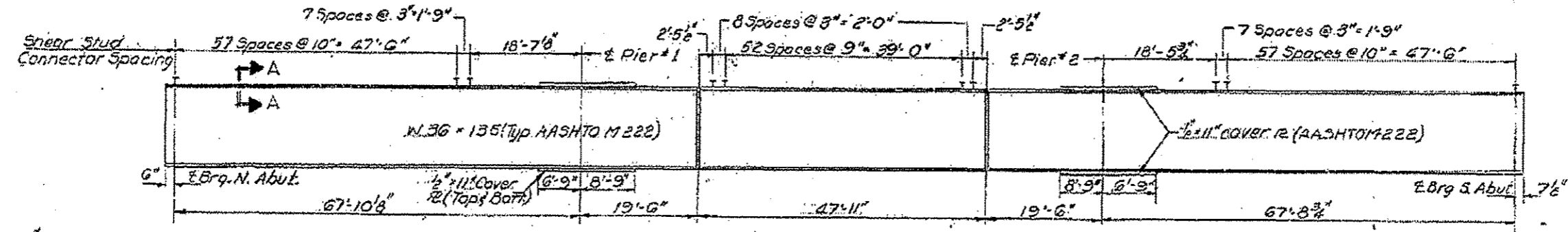
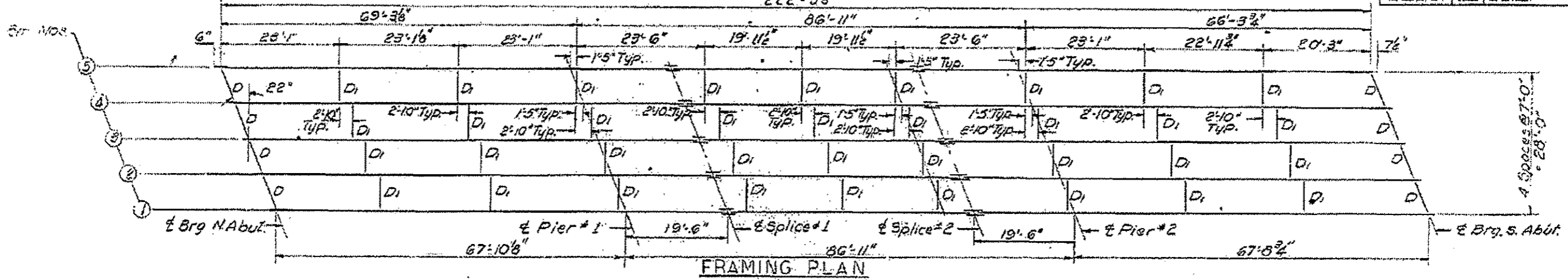
STATE OF ILLINOIS  
DEPARTMENT OF TRANSPORTATION

030-0020  
IL 1 OVER LAWLER DITCH

SCALE: SHEET OF SHEETS STA. TO STA.

FOR INFORMATION ONLY

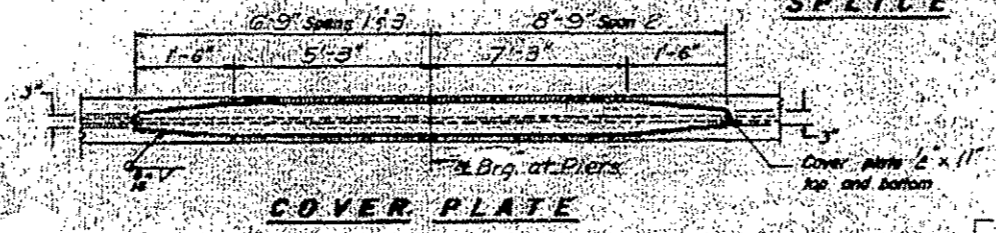
DATE	BY	REVISION	NO.
1/12/14	JLH	Initial	1
1/12/14	JLH	Initial	2



TOP OF BEAM ELEVATIONS  
(For fabrication only)

	Beam #1	Beam #2	Beam #3	Beam #4	Beam #5
E Brq. N. Abut.	374.05	374.14	374.22	374.07	373.92
E Pier #1	374.87	374.96	375.03	374.89	374.74
E Splice #1	375.11	375.19	375.27	375.15	374.97
E Splice #2	375.69	375.77	375.85	375.70	375.55
E Pier #2	375.92	376.01	376.08	375.94	375.79
E Brq. S. Abut.	376.74	376.83	376.90	376.76	376.60

Note: The design Moment and Reaction Tables are on sheet # 2.



DESIGNED: [Signature]  
CHECKED: [Signature]  
DRAWN: F.M.  
APPROVED: [Signature]  
Director of Highways

FILE NAME: 0:\pwork\p1\dat\dahmer.jk\0302426178-10-whit-plan.dgn  
USER NAME: dahmer.jk  
DESIGNED: [Signature]  
DRAWN: [Signature]  
CHECKED: [Signature]  
DATE: [Signature]

DESIGNED: [Signature]  
DRAWN: [Signature]  
CHECKED: [Signature]  
DATE: [Signature]

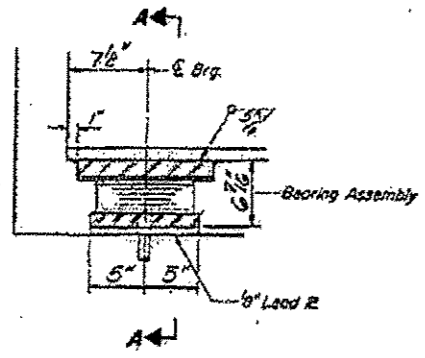
STATE OF ILLINOIS  
DEPARTMENT OF TRANSPORTATION

030-0020  
IL 1 OVER LAWLER DITCH  
SCALE: SHEET OF SHEETS STA. TO STA.

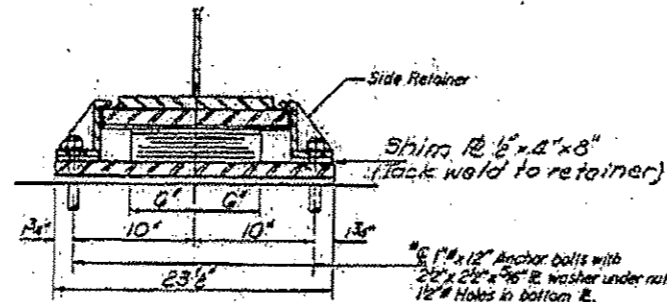
STRUCTURAL STEEL  
PART 782 SEC. 113-1B-1  
GALLATIN COUNTY

F.A. RTE.	SECTION	COUNTY	TOTAL SHEETS NO.
VAR. 09 BRIDGE PAINT 2014-1	*	*	13 12
			CONTRACT NO. 78418

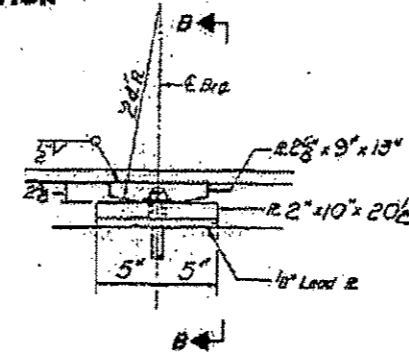
FOR INFORMATION ONLY STA 331+85.50



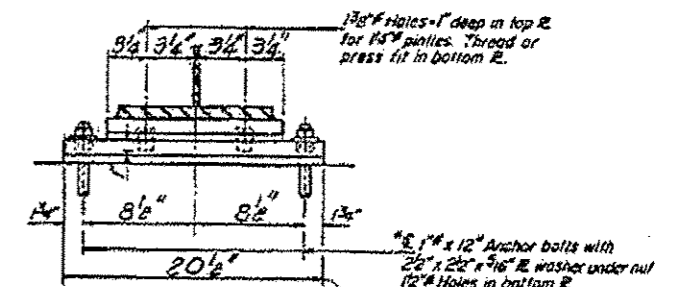
SECTION AT ABUT SOUTH



SECTION A-A



ELEVATION AT PIER #1

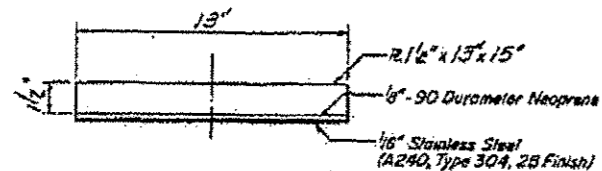


SECTION B-B

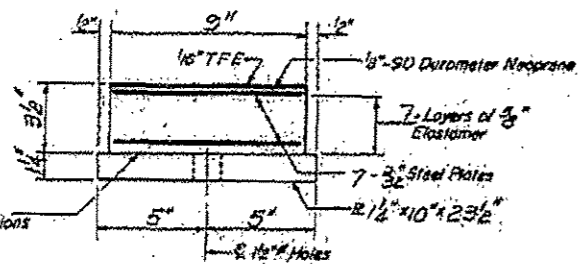
FIXED BEARING

TYPE II TFE ELASTOMERIC EXP. BRG.  
(South Abutment)

Note: After beams have been erected holes of expansion bearings shall be drilled and anchor bolts grouted in place. Anchor bolts or fixed bearings may be built into the masonry.



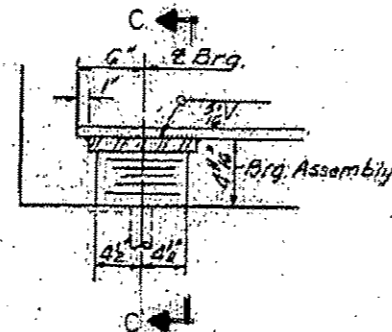
TOP BEARING ASSEMBLY



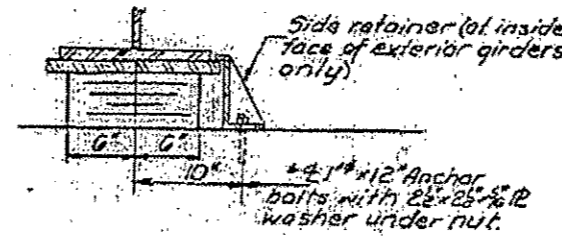
BOTTOM BEARING ASSEMBLY

Banded - See Special Provisions

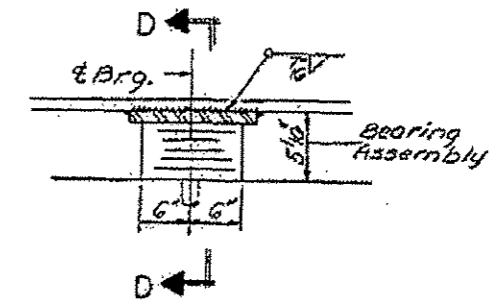
These Elastomeric Bearings contain features for which patents have been granted or applied for. Free license for projects governed by these standards may be obtained by applying to Fel-Pro Incorporated, Skokie, Illinois.



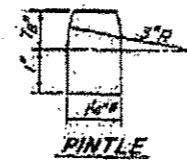
SECTION AT ABUT. NORTH



SECTION C-C

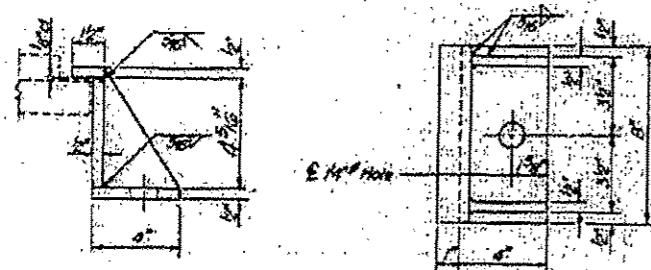


SECTION AT PIER #2

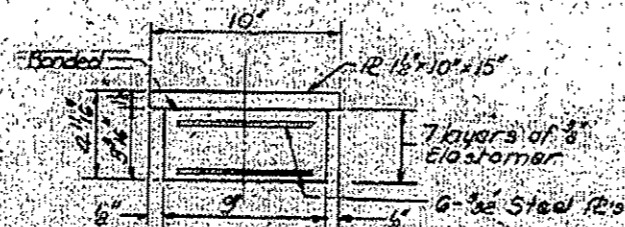


PINTLE

TYPE I ELASTOMERIC EXP. BRG.  
(North Abut)

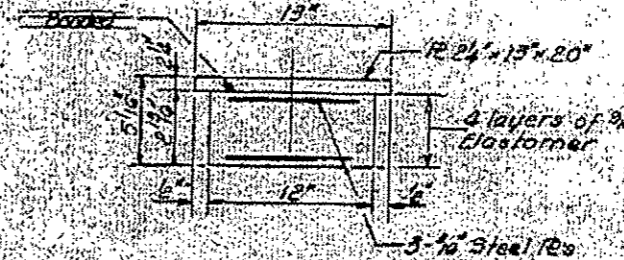


SIDE RETAINER

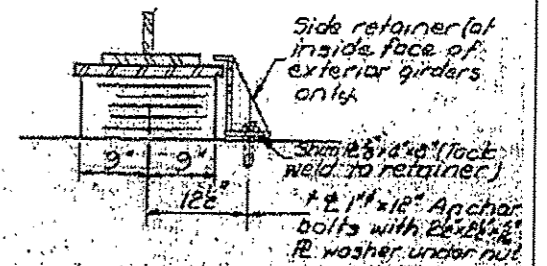


BEARING ASSEMBLY  
At North Abut

Note: Steel Brg. Plates and retainers shall be fabricated from AASHTO M-222 steel.



BEARING ASSEMBLY  
of Pier #2



SECTION D-D

DESIGNED: <i>[Signature]</i>	SCALE: <i>[Signature]</i>
DRAWN: <i>[Signature]</i>	DATE: <i>[Signature]</i>
CHECKED: <i>[Signature]</i>	APPROVED: <i>[Signature]</i>

BEARING DETAILS  
E A RT 782 SEC II 3-B-1  
GALLATIN COUNTY

FOR INFORMATION ONLY STA 43+85.50

FILE NAME: c:\pwork\p1\dot\dahmer\j\0302426178	USER NAME: Dahmer_j	DESIGNED: -	REVISED: -
Plot Scale: 2.72917 in.	Plot Date: 3/21/2014	DRAWN: -	REVISED: -
		CHECKED: -	REVISED: -
		DATE: -	REVISED: -

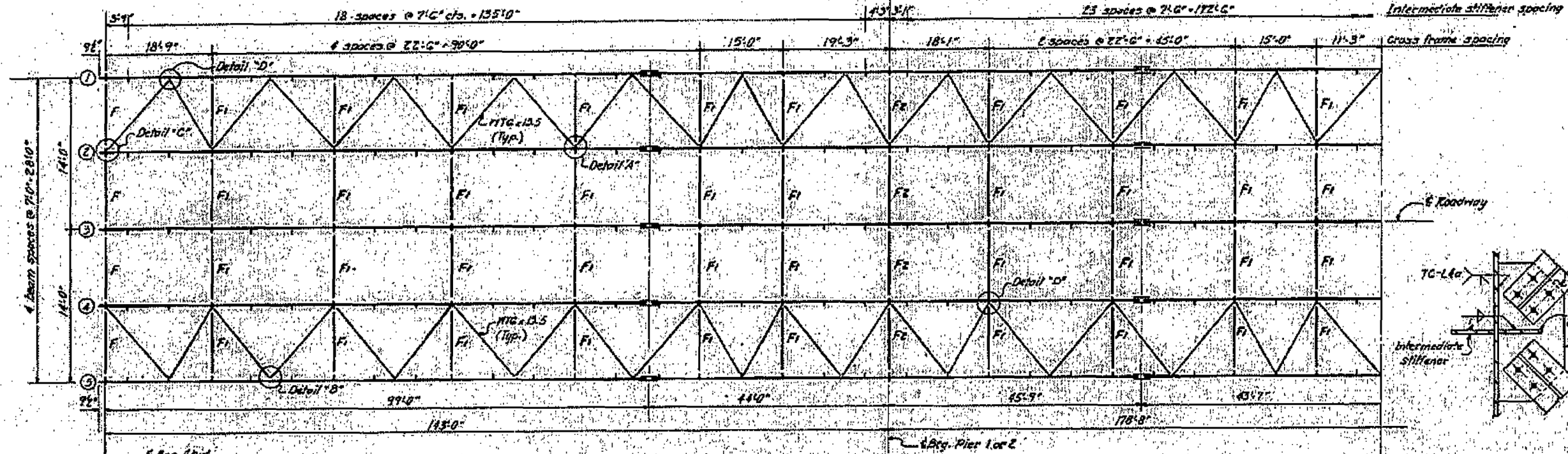
STATE OF ILLINOIS  
DEPARTMENT OF TRANSPORTATION

030-0020  
IL 1 OVER LAWLER DITCH

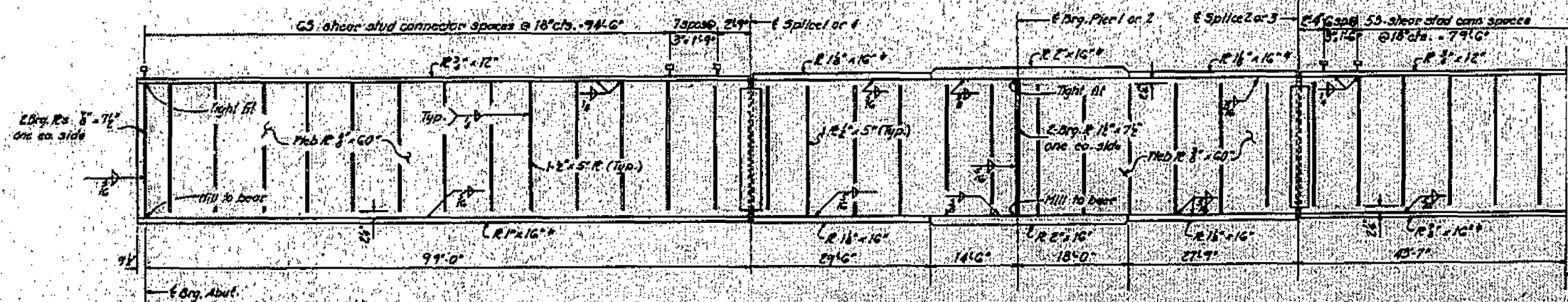
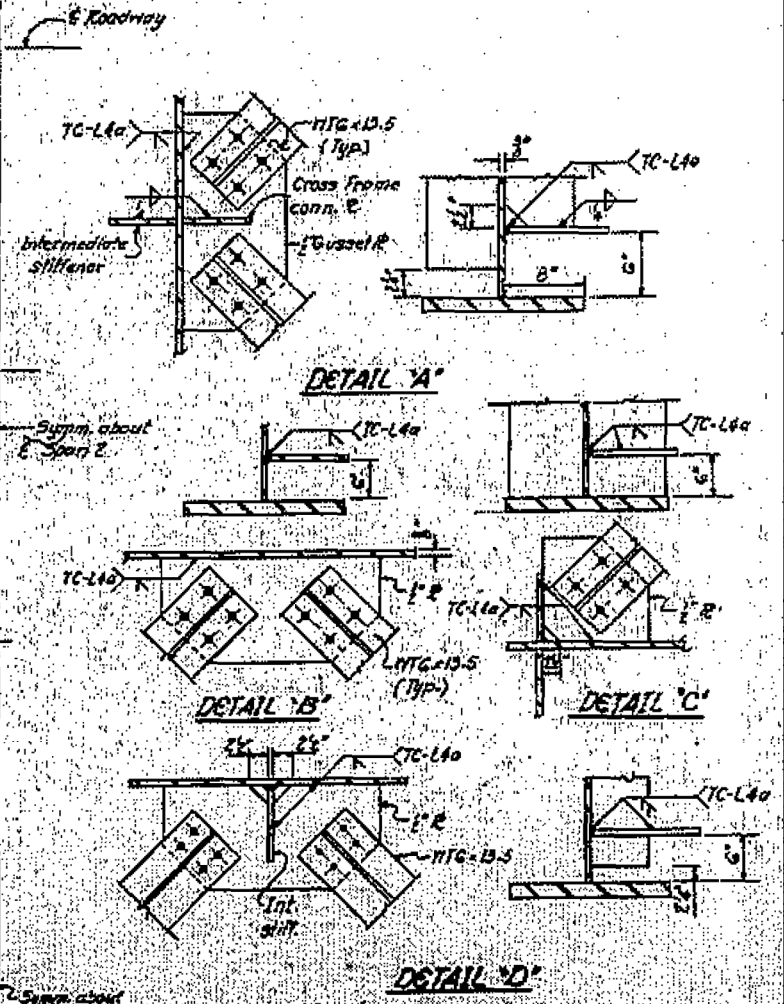
F.A. RTE.	SECTION	COUNTY	TOTAL SHEETS	SHEET NO.
09	BRIDGE PAINT 2014-1	*	13	13
CONTRACT NO. 78418			ILLINOIS FED. AID PROJECT	

SCALE: SHEET OF SHEETS STA. TO STA.



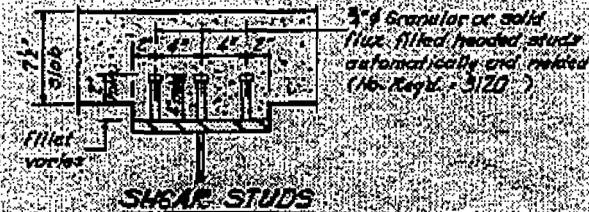


HALF FRAMING PLAN



HALF ELEVATION

Note:  
The main load carrying member components subject to fatigue stress shall conform to the supplemental requirements for North Business Zone C. These components are the tension flanges (identified with checkmark), webs and all splice plate material of the steel girders.



DESIGNED	K. J. ...
CHECKED	...
APPROVED	...

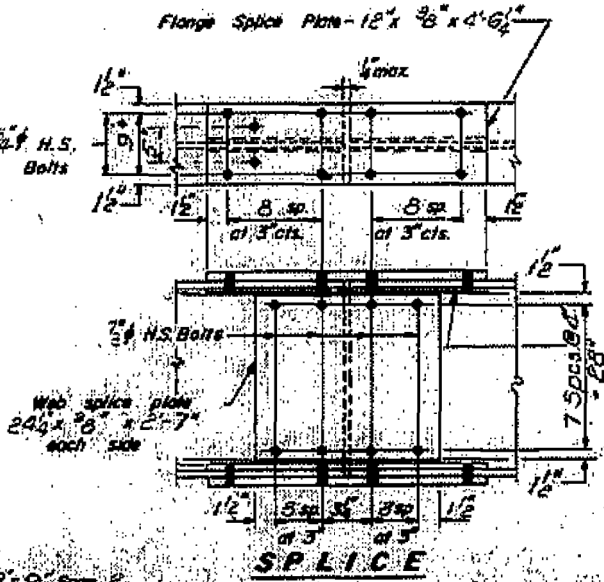
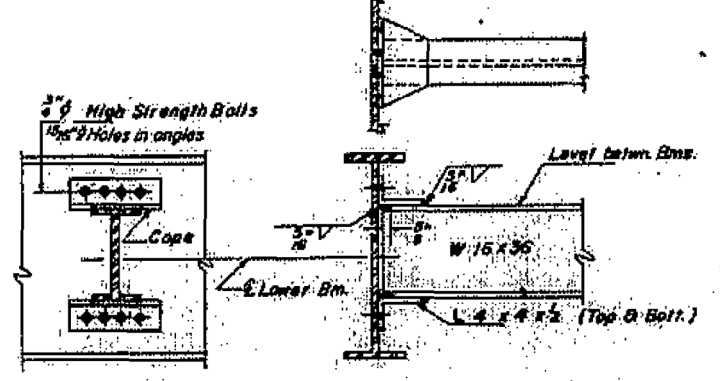
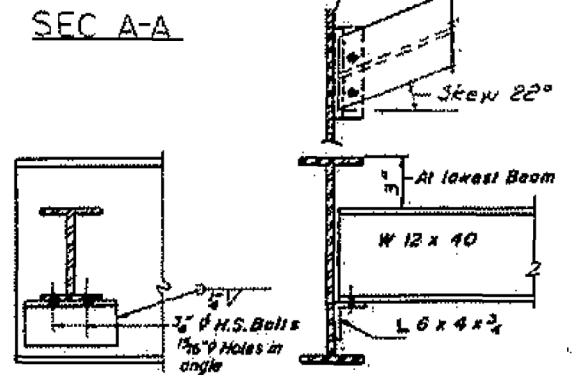
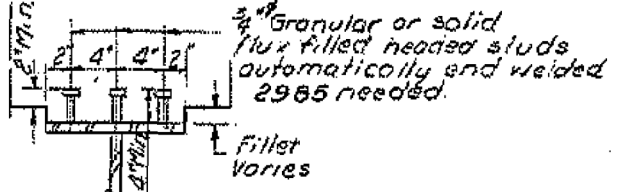
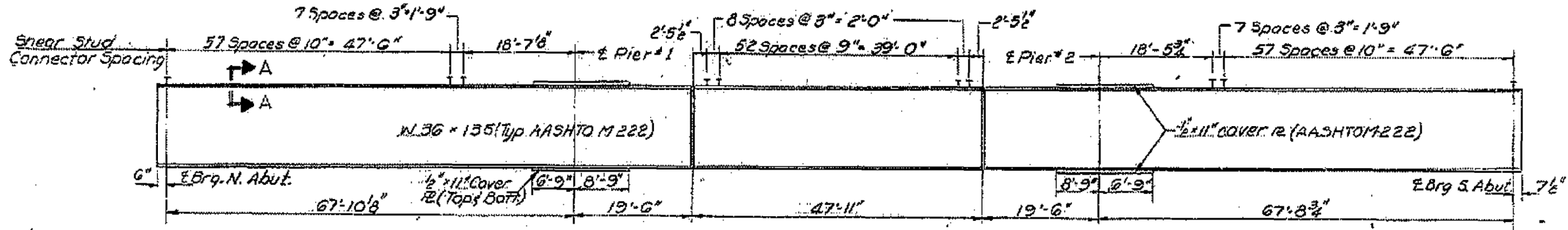
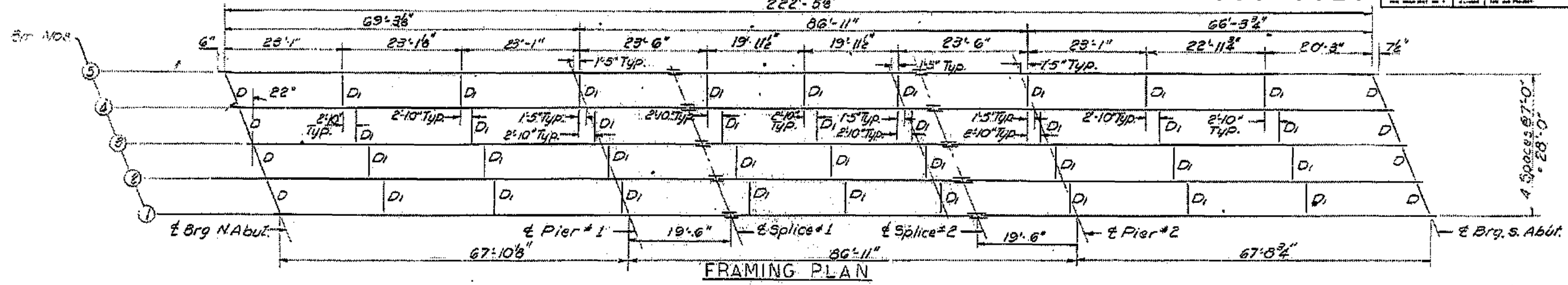
STRUCTURAL STEEL  
PART 100 500-113-1B  
GALLATIN COUNTY  
STA 348+00.00

FOR INFORMATION ONLY

FILE NAME	USER NAME = Dahmer,ja	DESIGNED -	REVISED -	STATE OF ILLINOIS DEPARTMENT OF TRANSPORTATION	030-0021 IL 1 OVER SALINE RIVER	F.A. RTE.	SECTION	COUNTY	TOTAL SHEETS	SHEET NO.	
Default	Plot Scale = 2.7375" / in.	DRAWN -	REVISED -			D9 BRIDGE PAINT 2014-1	*	ILLINOIS	13	9	
	Plot Date = 3/21/2014	CHECKED -	REVISED -			SCALE: SHEET OF SHEETS STA. TO STA.		CONTRACT NO. 78418		ILLINOIS FED. AID PROJECT	
		DATE -	REVISED -								



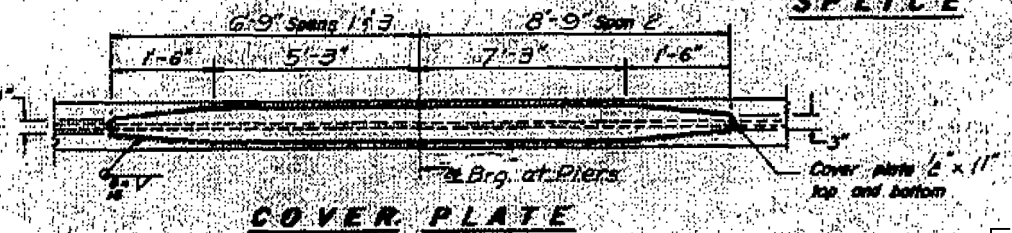




TOP OF BEAM ELEVATIONS  
(For fabrication only)

	Beam #1	Beam #2	Beam #3	Beam #4	Beam #5
Brig. N. Abut.	374.05	374.14	374.22	374.07	373.92
Pier #1	374.87	374.96	375.03	374.89	374.74
Splice #1	375.11	375.19	375.27	375.15	374.97
Splice #2	375.69	375.77	375.85	375.70	375.55
Pier #2	375.92	376.01	376.08	375.94	375.79
Brig. S. Abut.	376.74	376.83	376.90	376.76	376.60

Note: The design Moment and Reaction Tables are on sheet # 2



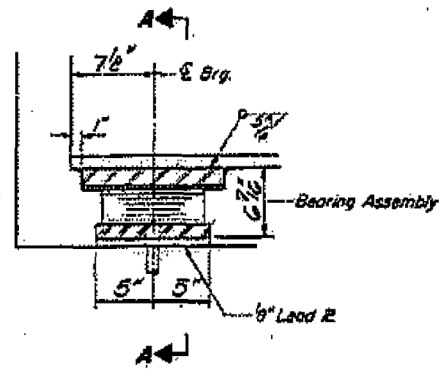
DESIGNED: [Signature]  
CHECKED: [Signature]  
DRAWN: F.M.  
CHECKED: [Signature]

EXAMINED: [Signature]  
APPROVED: [Signature]  
Director of Highways

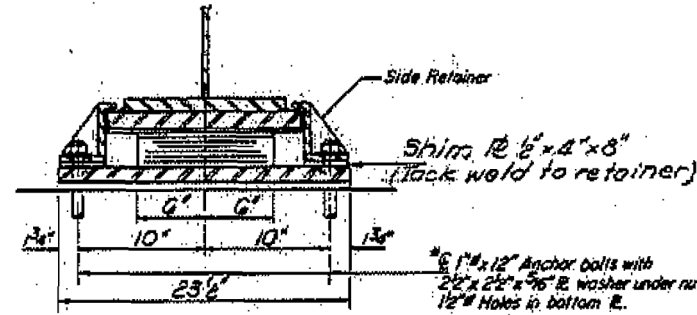
STRUCTURAL STEEL  
PART 782 SEC. 113-1B-1  
GALLATIN COUNTY

FOR INFORMATION ONLY STA 331+85.50

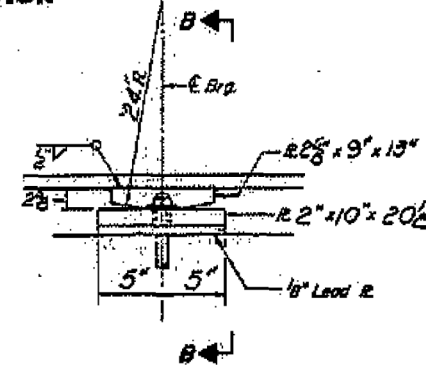
PROJECT NO.	SECTION	SHEET NO.	TOTAL SHEETS
782	113-1B-1	74	27



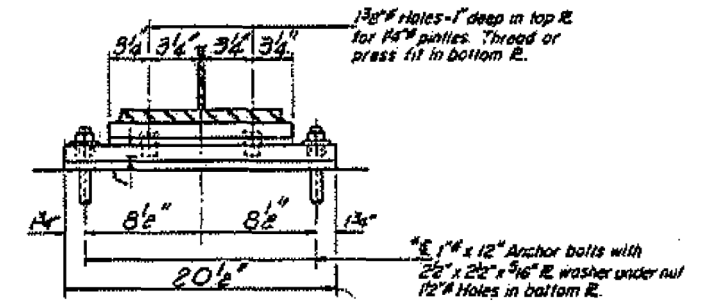
SECTION AT ABUT. SOUTH



SECTION A-A

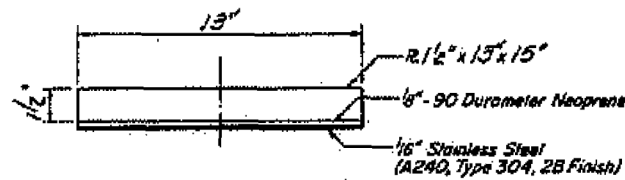


ELEVATION AT PIER #1

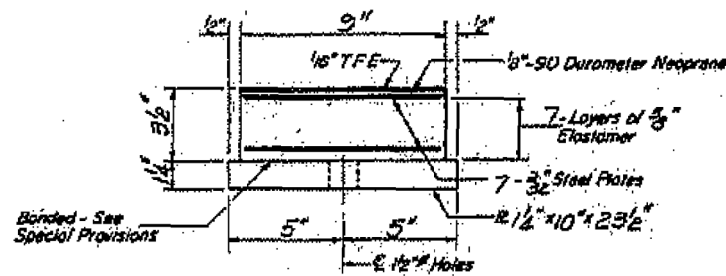


SECTION B-B

**TYPE II TFE ELASTOMERIC EXP. BRG.**  
(South Abutment)

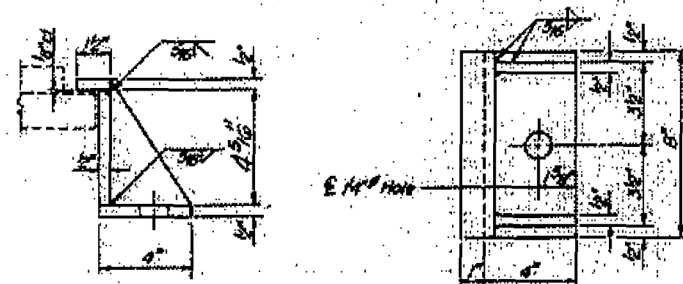


TOP BEARING ASSEMBLY



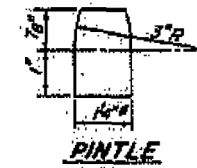
BOTTOM BEARING ASSEMBLY

These Elastomeric Bearings contain features for which patents have been granted or applied for. Free license for projects governed by these standards may be obtained by applying to Fel-Pro Incorporated, Skokie, Illinois.

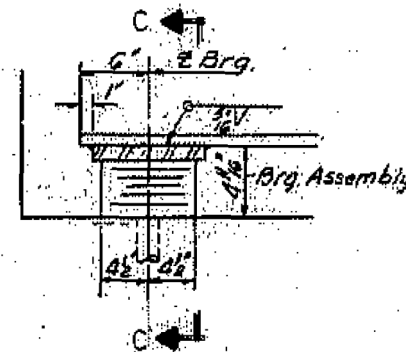


SIDE RETAINER

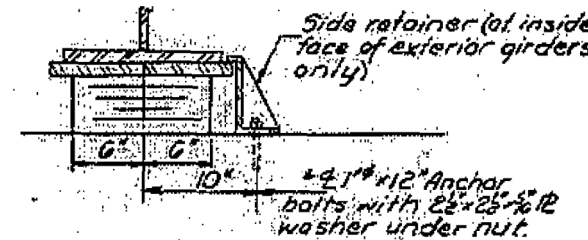
Note: After beams have been erected holes of expansion bearings shall be drilled and anchor bolts grouted in place. Anchor bolts of fixed bearings may be built into the masonry.



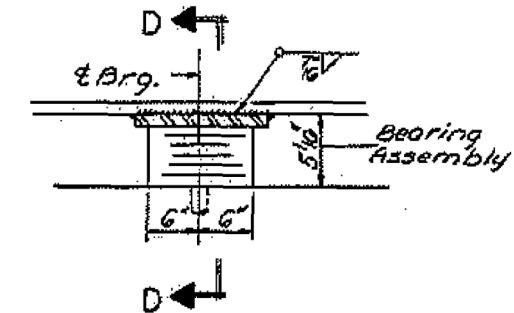
PINTLE



SECTION AT ABUT. NORTH

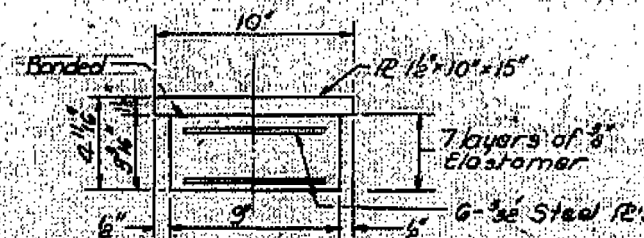


SECTION C-C

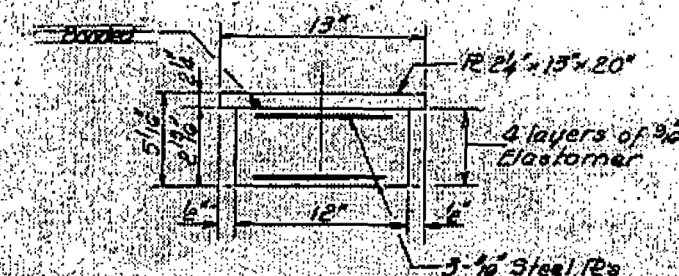


SECTION AT PIER #2

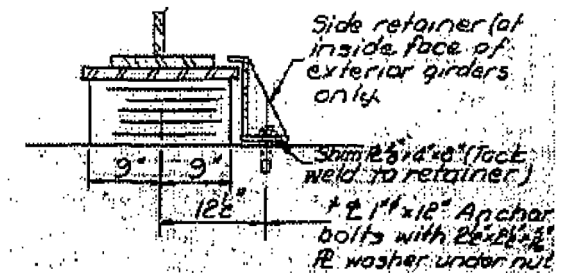
**TYPE I ELASTOMERIC EXP. BRG.**  
(North Abut)



BEARING ASSEMBLY  
At North Abut



BEARING ASSEMBLY  
at Pier #2



SECTION D-D

Note: Steel Brg. Plates and retainers shall be fabricated from AASHTO M-222 steel.

**BEARING DETAILS**

F.A. RT. 782 SEC 113-1B-1

GALLATIN COUNTY

FOR INFORMATION ONLY STA. 331+85.50

DESIGNED	DAHMER, J.
DRAWN	DAHMER, J.
CHECKED	DAHMER, J.
APPROVED	DAHMER, J.

FILE NAME	USER NAME	DESIGNED	REVISED
et:\pwork\p1dot\dahmer.je\0382426178	DAHMER, J.	-	-
		DRAWN	REVISED
		-	-
		CHECKED	REVISED
		-	-
		DATE	REVISED
		-	-

STATE OF ILLINOIS  
DEPARTMENT OF TRANSPORTATION

030-0020			
IL 1 OVER LAWLER DITCH			
SCALE:	SHEET	OF SHEETS	STA. TO STA.

F.A. RT.	SECTION	COUNTY	TOTAL SHEETS	SHEET NO.
VAR. D9	BRIDGE PAINT 2014-1	*	13	13
CONTRACT NO. 78418				
ILLINOIS FED. AID PROJECT				