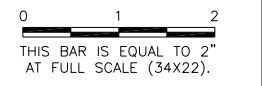


CE032

REVISIONS

NUMBER	BY	DATE



CITY OF CENTRALIA, ILLINOIS
 CENTRALIA MUNICIPAL AIRPORT
 CENTRALIA, ILLINOIS

CONSTRUCT NEW ELECTRICAL VAULT; REHABILITATE
 MRLS, PAPI & REILS ON RUNWAY 18/36
 CONSTRUCTION ACTIVITY PLAN 2

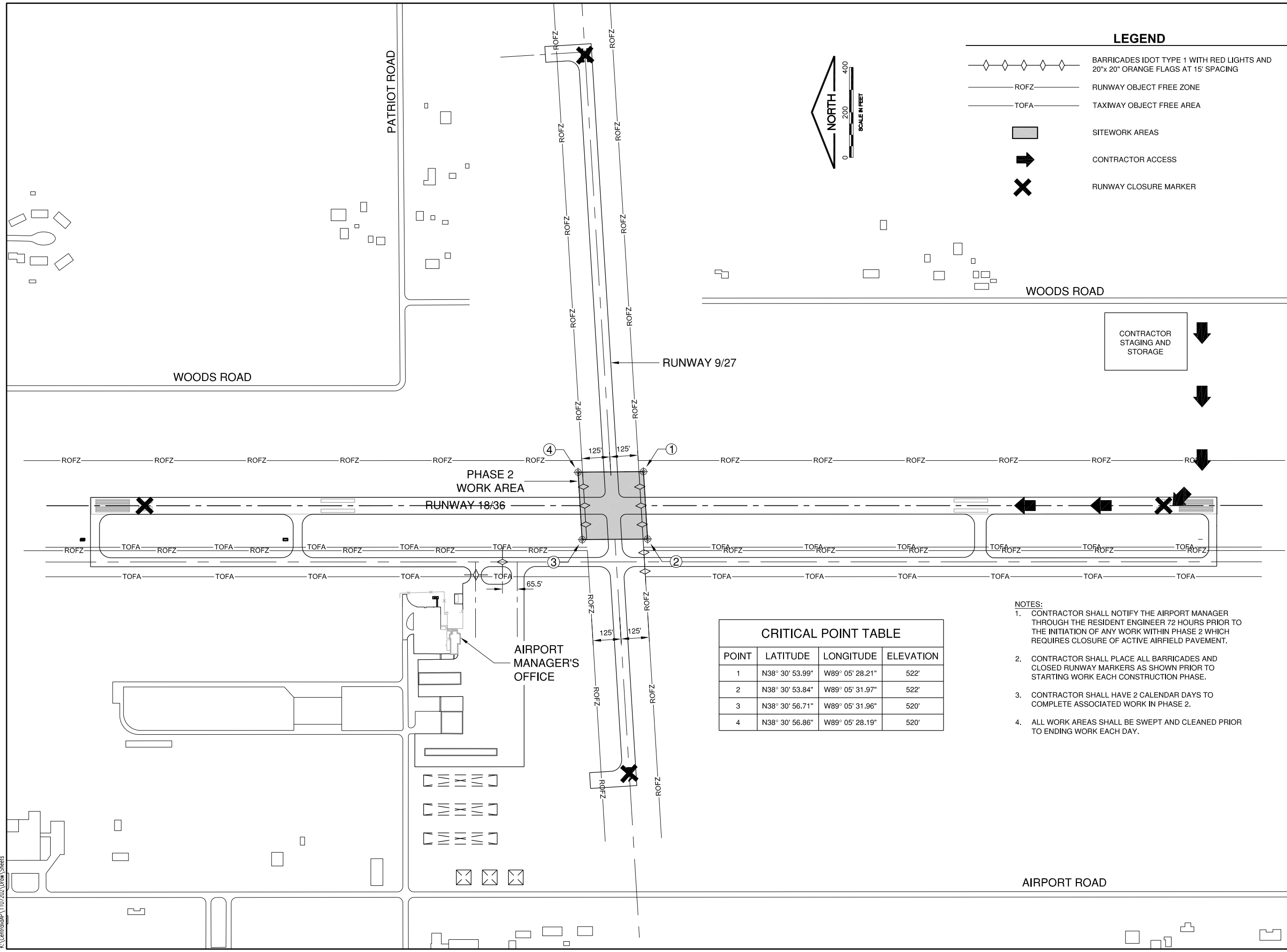
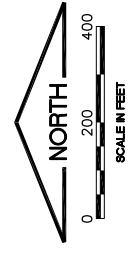
© Copyright CMT, Inc.

CMT
 CRAWFORD, MURPHY & TILLY, INC.
 CONSULTING ENGINEERS
 License No. 184-000613

DESIGN BY:	KLB
DRAWN BY:	ADD, DPA
CHECKED BY:	KLB
APPROVED BY:	RLV
DATE:	MAY 2, 2014
JOB No:	11072-02

LEGEND

- BARRICADES IDOT TYPE 1 WITH RED LIGHTS AND 20"x 20" ORANGE FLAGS AT 15' SPACING
- RUNWAY OBJECT FREE ZONE
- TAXIWAY OBJECT FREE AREA
- SITework AREAS
- CONTRACTOR ACCESS
- RUNWAY CLOSURE MARKER



CRITICAL POINT TABLE

POINT	LATITUDE	LONGITUDE	ELEVATION
1	N38° 30' 53.99"	W89° 05' 28.21"	522'
2	N38° 30' 53.84"	W89° 05' 31.97"	522'
3	N38° 30' 56.71"	W89° 05' 31.96"	520'
4	N38° 30' 56.86"	W89° 05' 28.19"	520'

- NOTES:**
- CONTRACTOR SHALL NOTIFY THE AIRPORT MANAGER THROUGH THE RESIDENT ENGINEER 72 HOURS PRIOR TO THE INITIATION OF ANY WORK WITHIN PHASE 2 WHICH REQUIRES CLOSURE OF ACTIVE AIRFIELD PAVEMENT.
 - CONTRACTOR SHALL PLACE ALL BARRICADES AND CLOSED RUNWAY MARKERS AS SHOWN PRIOR TO STARTING WORK EACH CONSTRUCTION PHASE.
 - CONTRACTOR SHALL HAVE 2 CALENDAR DAYS TO COMPLETE ASSOCIATED WORK IN PHASE 2.
 - ALL WORK AREAS SHALL BE SWEEPED AND CLEANED PRIOR TO ENDING WORK EACH DAY.

K:\Centralia\1107202\Drawn Sheets