

REVISIONS		
NUMBER	BY	DATE

0 1 2
THIS BAR IS EQUAL TO 2"
AT FULL SCALE (34X22).

CITY OF CENTRALIA, ILLINOIS
CENTRALIA MUNICIPAL AIRPORT
CENTRALIA, ILLINOIS

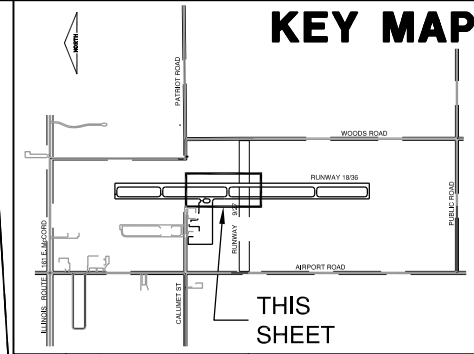
CONSTRUCT NEW ELECTRICAL VAULT; REHABILITATE
MIRLS, PAPI & REILS ON RUNWAY 18/36
ELECTRICAL & LIGHTING PLAN 2

© Copyright CMT, Inc.
CMT
CRAWFORD, MURPHY & TILLY, INC.
CONSULTING ENGINEERS
License No. 184-000613

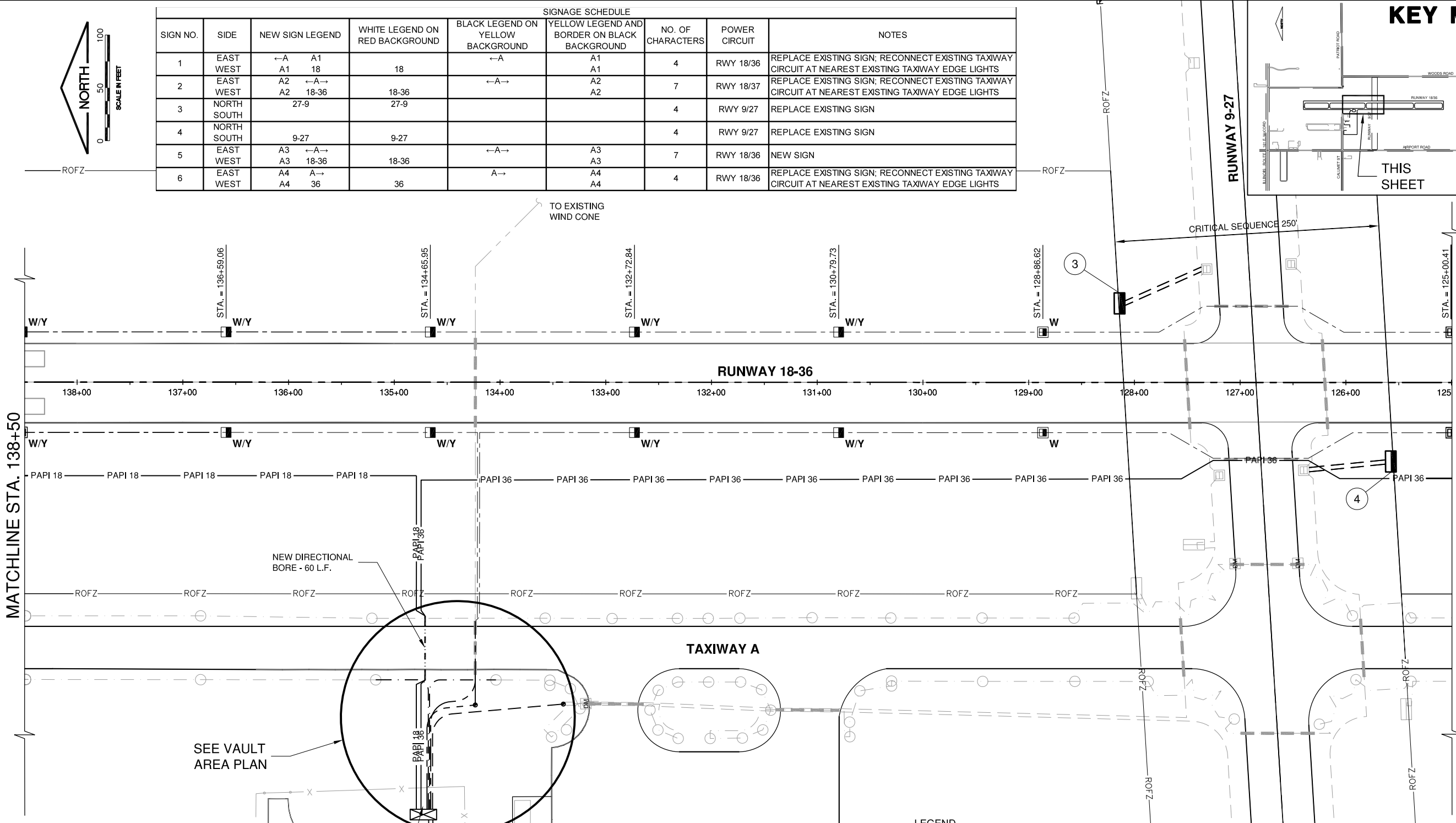
DESIGN BY:	KLB
DRAWN BY:	ADD, DPA
CHECKED BY:	KLB
APPROVED BY:	RLV
DATE:	MAY 2, 2014
JOB No:	11072-02
IL PROJ. NO.	ENL-4230
PROJ. NO.	3-17-SBGP-XX
SHEET	13 OF 30 SHEETS

SIGNAGE SCHEDULE								
SIGN NO.	SIDE	NEW SIGN LEGEND	WHITE LEGEND ON RED BACKGROUND	BLACK LEGEND ON YELLOW BACKGROUND	YELLOW LEGEND AND BORDER ON BLACK BACKGROUND	NO. OF CHARACTERS	POWER CIRCUIT	NOTES
1	EAST WEST	←A A1 A1 18	18	←A	A1 A1	4	RWY 18/36	REPLACE EXISTING SIGN; RECONNECT EXISTING TAXIWAY CIRCUIT AT NEAREST EXISTING TAXIWAY EDGE LIGHTS
2	EAST WEST	A2 ←A→ A2 18-36	18-36	←A→	A2 A2	7	RWY 18/37	REPLACE EXISTING SIGN; RECONNECT EXISTING TAXIWAY CIRCUIT AT NEAREST EXISTING TAXIWAY EDGE LIGHTS
3	NORTH SOUTH	27-9	27-9			4	RWY 9/27	REPLACE EXISTING SIGN
4	NORTH SOUTH	9-27	9-27			4	RWY 9/27	REPLACE EXISTING SIGN
5	EAST WEST	A3 ←A→ A3 18-36	18-36	←A→	A3 A3	7	RWY 18/36	NEW SIGN
6	EAST WEST	A4 A→ A4 36	36	A→	A4 A4	4	RWY 18/36	REPLACE EXISTING SIGN; RECONNECT EXISTING TAXIWAY CIRCUIT AT NEAREST EXISTING TAXIWAY EDGE LIGHTS

KEY MAP



THIS SHEET



LEGEND	
	NEW STAKE MOUNTED RUNWAY EDGE LIGHT
	NEW BASE MOUNTED RUNWAY EDGE LIGHT
	NEW STAKE MOUNTED RUNWAY THRESHOLD LIGHT
	NEW BASE MOUNTED RUNWAY THRESHOLD LIGHT
	NEW AIRFIELD GUIDANCE SIGN
	NEW PAPI
	NEW REIL
	NEW SPLICE CAN
	WHITE OMNIDIRECTIONAL LENS
	WHITE/YELLOW BIDIRECTIONAL LENS
	GREEN/RED BIDIRECTIONAL LENS
	NEW 18/36 RUNWAY CIRCUIT -1/C #8 5 KV UG CABLE IN UD NEW 1836 RUNWAY HOMERUN -2/C #8 5KV UG CABLE IN UD
	PAPI 18
	PAPI 36
	NEW 4" DIRECTIONAL BORE
	EXISTING AIRFIELD DUCT
	EXISTING 9/27 RUNWAY CIRCUIT
	EXISTING TAXIWAY CIRCUIT
	EXISTING WIND CONE CIRCUIT

NOTES

1. LIGHTS SHALL BE LOCATED NO MORE THAN 10' FROM THE EXISTING PAVEMENT EDGE.