

CE032

REVISIONS		
NUMBER	BY	DATE

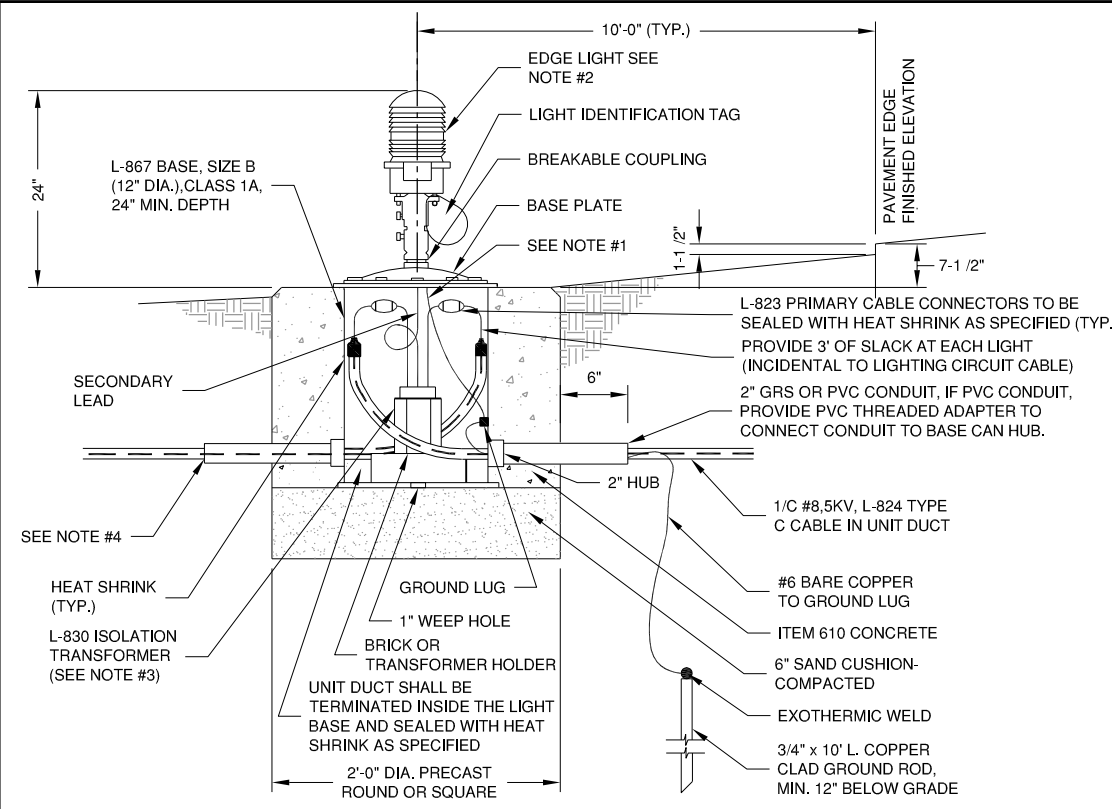
0 1 2
 THIS BAR IS EQUAL TO 2" AT FULL SCALE (34x22).

CITY OF CENTRALIA, ILLINOIS
 CENTRALIA MUNICIPAL AIRPORT
 CENTRALIA, ILLINOIS

CONSTRUCT NEW ELECTRICAL VAULT; REHABILITATE
 MRLS, PAPI & REILS ON RUNWAY 18/36
 ELECTRICAL DETAILS

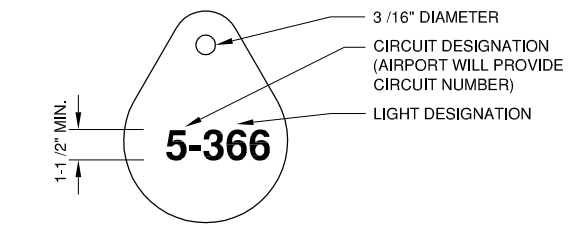
© Copyright CMT, Inc.
CMT
 CRAWFORD, MURPHY & TILLY, INC.
 CONSULTING ENGINEERS
 License No. 184-000613

DESIGN BY:	KLB
DRAWN BY:	ADD, DPA
CHECKED BY:	KLB
APPROVED BY:	RLV
DATE:	MAY 2, 2014
JOB No:	11072-02
IL PROJ. NO.	ENL-4230
PROJ. NO.	3-17-SBGP-XX
SHEET	16 OF 30 SHEETS



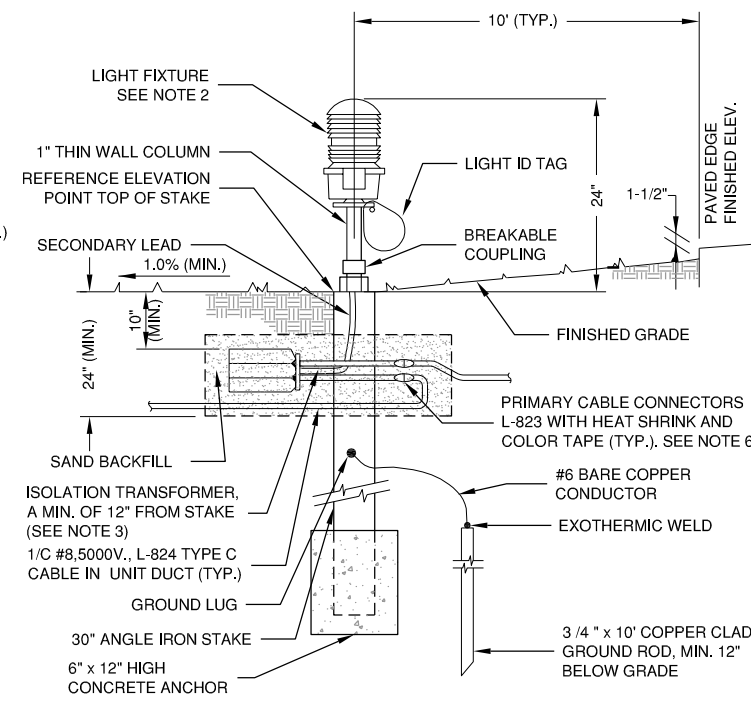
- NOTES**
- THE LIGHT FIXTURE SHALL BE BONDED TO THE LIGHT BASE INTERNAL GROUND LUG VIA A #6 AWG STRANDED COPPER WIRE RATED FOR 600 VOLTS WITH GREEN XHHW INSULATION. THE GROUND WIRE LENGTH SHALL BE SUFFICIENT TO ALLOW THE REMOVAL OF THE LIGHT FIXTURE FROM THE LIGHT BASE FOR ROUTINE MAINTENANCE. SEE THE LIGHT FIXTURE MANUFACTURER'S INSTRUCTIONS FOR PROPER METHODS OF ATTACHING THIS BONDING WIRE.
 - LIGHT FIXTURES SHALL BE AS INDICATED IN NOTE 2 OF STAKE MOUNTED LIGHT DETAIL.
 - L-830 ISOLATION TRANSFORMERS SHALL BE AS INDICATED IN NOTE 3 OF STAKE MOUNTED LIGHT DETAIL.
 - AFTER INSTALLATION OF CABLE IN UNIT DUCT, SEAL END OF CONDUIT TO MAKE WATERTIGHT.
 - THE TOLERANCE FOR THE HEIGHT OF RUNWAY/TAXIWAY EDGE LIGHTS MUST BE ± 1 INCH. THE TOLERANCE FOR THE LATERAL SPACING (LIGHT LANE TO RUNWAY/TAXIWAY CENTERLINE) OF RUNWAY/TAXIWAY EDGE LIGHTS MUST BE ± 1 INCH.
 - DIRECTION OF PRIMARY CABLES MUST BE IDENTIFIED BY COLOR CODING AS FOLLOWS: WHEN FACING LIGHT WITH BACK FACING PAVEMENT., CABLE TO THE LEFT IS CODED RED AND CABLE TO THE RIGHT IS CODED BLUE.
 - APPLY A CORROSION INHIBITING, ANTI-SEIZE COMPOUND TO ALL SCREWS, NUTS AND FRANGIBLE COUPLING THREADS. IF COATED BOLTS ARE USED PER ENGINEERING BRIEF #83, DO NOT APPLY ANTI-SEIZE COMPOUND.
 - ELECTRICAL INSULATING GREASE MUST BE APPLIED WITHIN THE L-830 ISOLATION TRANSFORMER SECONDARY TWO CONDUCTOR CONNECTORS TO PREVENT WATER ENTRANCE. THE CONNECTORS MUST NOT BE TAPED.

BASE MOUNTED EDGE LIGHT
 N.T.S.



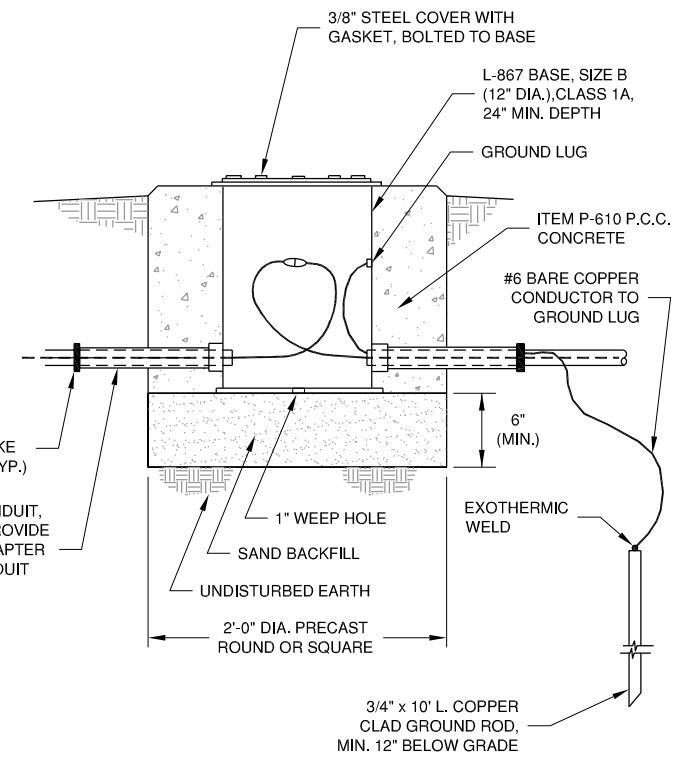
LIGHT IDENTIFICATION TAG DETAIL
 N.T.S.

- NOTES**
- INSTALL A NONCORROSIVE DISC OF 2" MINIMUM DIAMETER WITH THE NUMBER PERMANENTLY STAMPED, CUT OUT, OR ENGRAVED UNDER THE HEAD OF THE BASE PLATE BOLT OR ATTACHED TO LIGHT FLANGE WITH SET SCREW.
 - NUMERALS SHOWN ARE FOR ILLUSTRATIVE PURPOSES ONLY, AND SHALL BE AS DIRECTED BY THE RESIDENT ENGINEER.
 - AIRFIELD SIGNS SHALL BE TAGGED AND NUMBERED.
 - THE CONTRACTOR SHALL NUMBER THE EXISTING AND PROPOSED LIGHTS AND SIGNS IN EACH CIRCUIT, STARTING AT THE HOMERUN AND CONTINUING AROUND THE ENTIRE CIRCUIT, BACK TO THE HOMERUN.

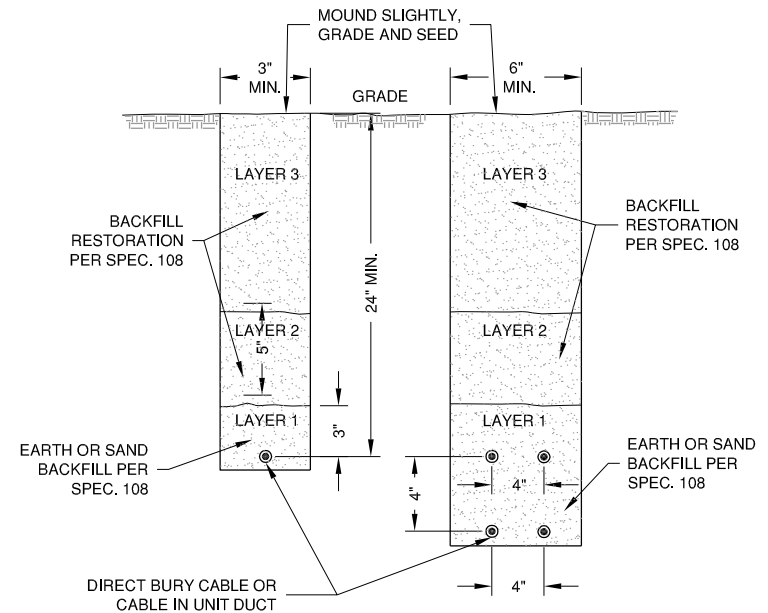


- CABLES SHALL NOT BE LESS THAN 24" DEEP. ENCASE ISOLATION TRANSFORMER, L-823 CONNECTORS, AND 2 FOOT MINIMUM OF L-824 CABLE SLACK IN SAND BACKFILL.
- LIGHT FIXTURES SHALL BE L-861, L-861E, AS INDICATED ON THE PLANS AND SPECIFICATIONS. LED EDGE LIGHTS SHALL BE INDICATED WITH THE SUFFIX (L). WHERE INDICATED TO BE QUARTZ, LAMPS SHALL BE 30W OR 45W AS REQUIRED BY LIGHT FIXTURE MANUFACTURER TO MEET MINIMUM DISTRIBUTION AND OUTPUT REQUIREMENTS OF AC 150/5345-46(LATEST EDITION).
- L-830 ISOLATION TRANSFORMERS FOR QUARTZ EDGE LIGHTS AND LED EDGE LIGHTS WITH HEATERS SHALL BE L-830-1, 30/45 WATT. LED EDGE LIGHTS WITHOUT HEATERS SHALL BE L-830-16, 10/15 WATT OR L-830-17, 20/25 WATT, AS RECOMMENDED BY LIGHT FIXTURE MANUFACTURER.
- UNIT DUCT, WHERE INSTALLED, SHALL BE TERMINATED AT L-823 CONNECTORS AND SEALED TO MAKE WATERTIGHT.
- DO NOT INSTALL ANGLE IRON STAKE BY DRIVING. MAKE ELECTRICAL CONNECTIONS AND BACKFILL AROUND THE STAKE WITH EARTH PASSING THE 1-INCH SIEVE. COMPACT AS REQUIRED TO PROVIDE FIRM SUPPORT FOR STAKE, AND TO THE SATISFACTION OF THE RESIDENT ENGINEER.
- DIRECTION OF PRIMARY CABLES MUST BE IDENTIFIED BY COLOR CODING AS FOLLOWS WHEN FACING LIGHT WITH BACK FACING PAVEMENT: CABLE TO THE LEFT IS CODED RED AND CABLE TO THE RIGHT IS CODED BLUE.
- THE TOLERANCE FOR THE HEIGHT OF RUNWAY/TAXIWAY EDGE LIGHTS MUST BE ± 1 INCH. THE TOLERANCE FOR THE LATERAL SPACING (LIGHT LANE TO RUNWAY/TAXIWAY CENTERLINE) OF RUNWAY/TAXIWAY EDGE LIGHTS MUST BE ± 1 INCH.

STAKE MOUNTED MEDIUM INTENSITY LIGHTS
 N.T.S.



SPLICE CAN DETAIL
 N.T.S.



- NOTES:**
- CABLES SHALL NOT BE PLACED LESS THAN 24" DEEP IN ANY ONE TRENCH UNLESS PERMITTED BY ENGINEER.
 - WHERE PERMITTED, CONTRACTOR MAY INSTALL CABLE IN UNIT DUCT BY PLOWING METHOD.

CABLE TRENCH DETAIL
 N.T.S.

K:\Centralia\1107202\Drawn Sheets