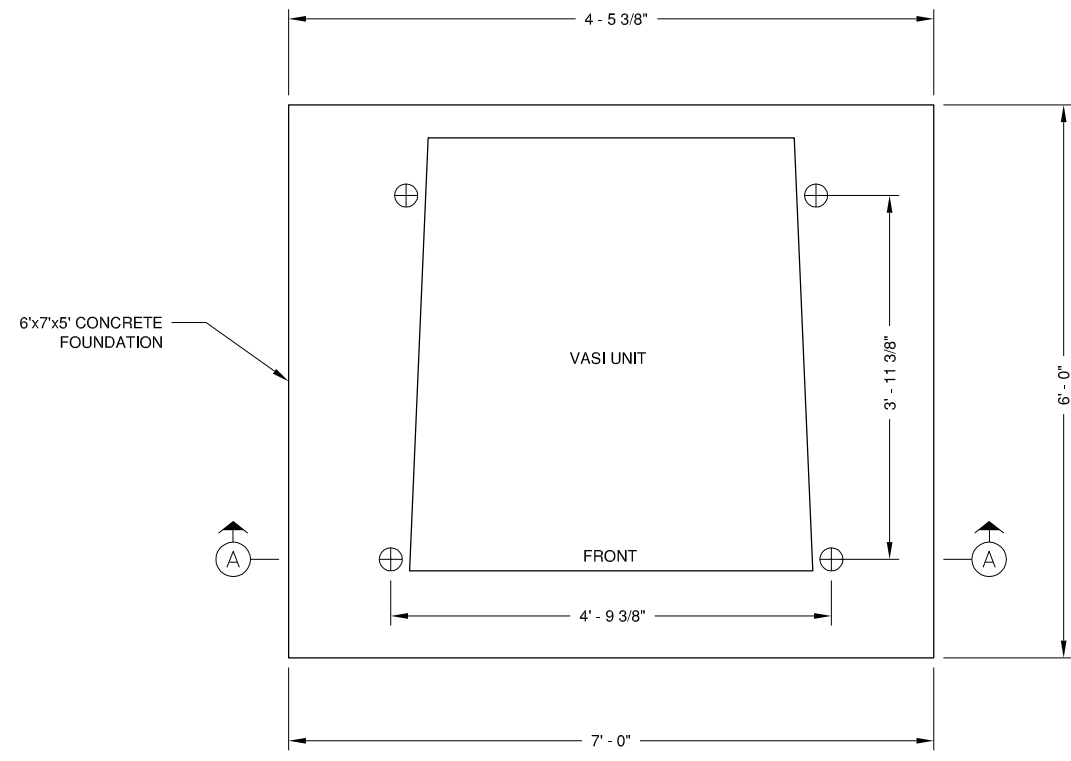
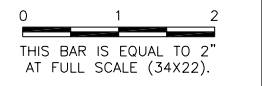
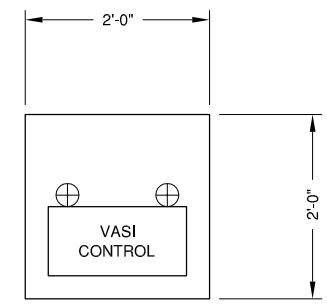


**CE032**

REVISIONS		
NUMBER	BY	DATE



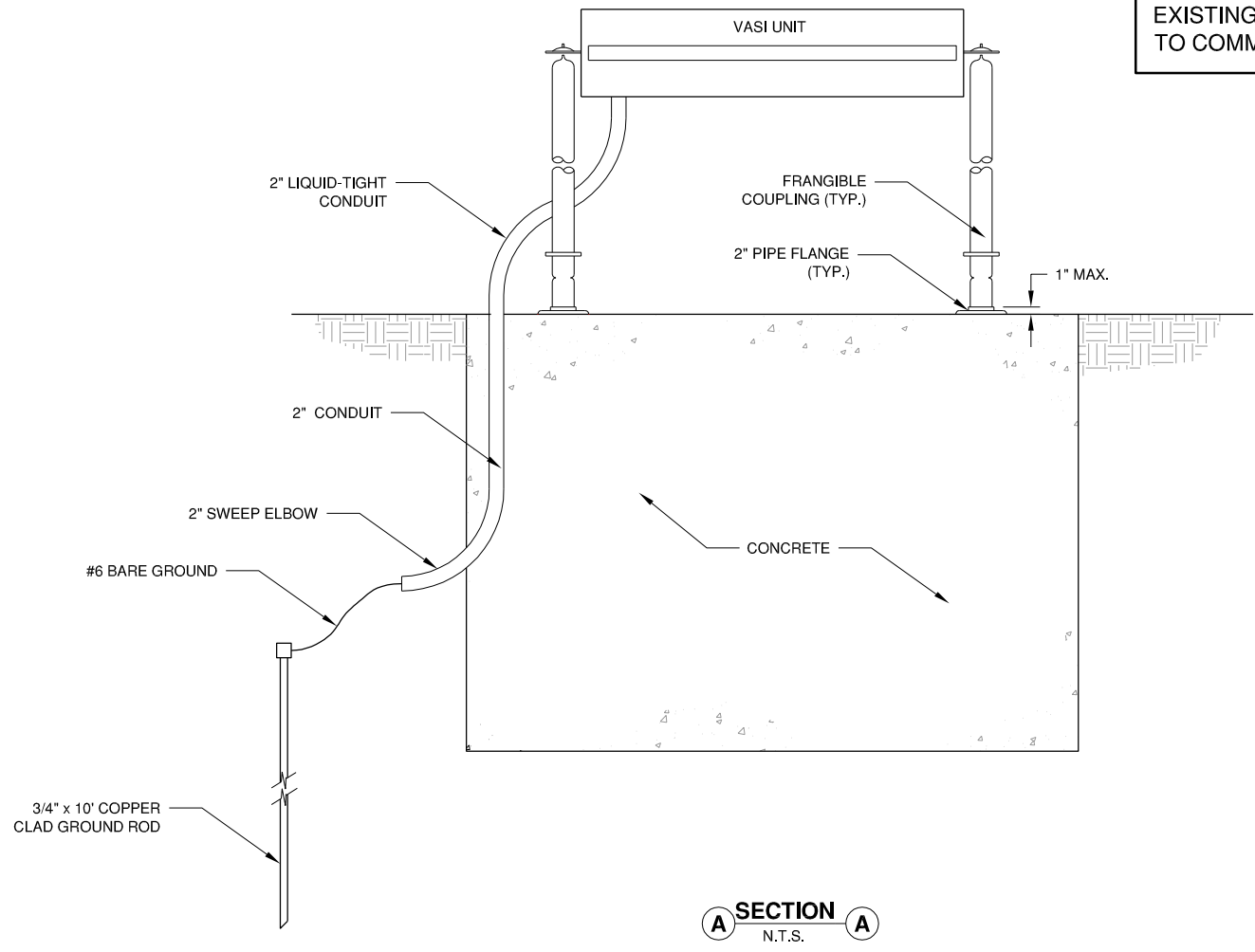
**PLAN VIEW**  
N.T.S.



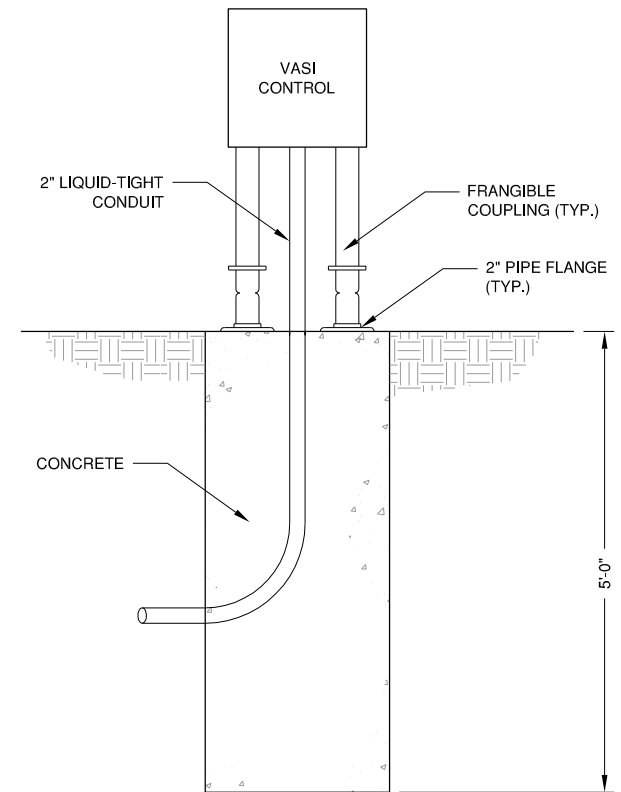
**PLAN VIEW**  
N.T.S.

- NOTE:**
- EACH VASI REMOVAL INCLUDES (2) VASI UNITS AND (1) CONTROL UNIT.
  - BACKFILL AND COMPACT AT EACH REMOVAL WITH CLEAN EARTH AND SEED TO MATCH SURROUNDING TURF.

DETAILS SHOWN ARE FOR INFORMATION ONLY.  
 CONTRACTOR SHALL VERIFY EXISTING CONDITIONS PRIOR TO COMMENCING WORK.



**SECTION A-A**  
N.T.S.



**ELEVATION**  
N.T.S.

**CITY OF CENTRALIA, ILLINOIS**  
**CENTRALIA MUNICIPAL AIRPORT**  
**CENTRALIA, ILLINOIS**  
**CONSTRUCT NEW ELECTRICAL VAULT; REHABILITATE**  
**MIRLS, PAPI & REILS ON RUNWAY 18/36**  
**VASI REMOVAL DETAIL**

© Copyright CMT, Inc.  
**CMT**  
 CRAWFORD, MURPHY & TILLY, INC.  
 CONSULTING ENGINEERS  
 License No. 184-000613

DESIGN BY:	KLB
DRAWN BY:	ADD, DPA
CHECKED BY:	KLB
APPROVED BY:	RLV
DATE:	MAY 2, 2014
JOB No:	11072-02
IL PROJ. NO.	ENL-4230
PROJ. NO.	3-17-SBGP-XX
SHEET	17 OF 30 SHEETS