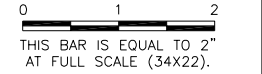


CE032

REVISIONS		
NUMBER	BY	DATE

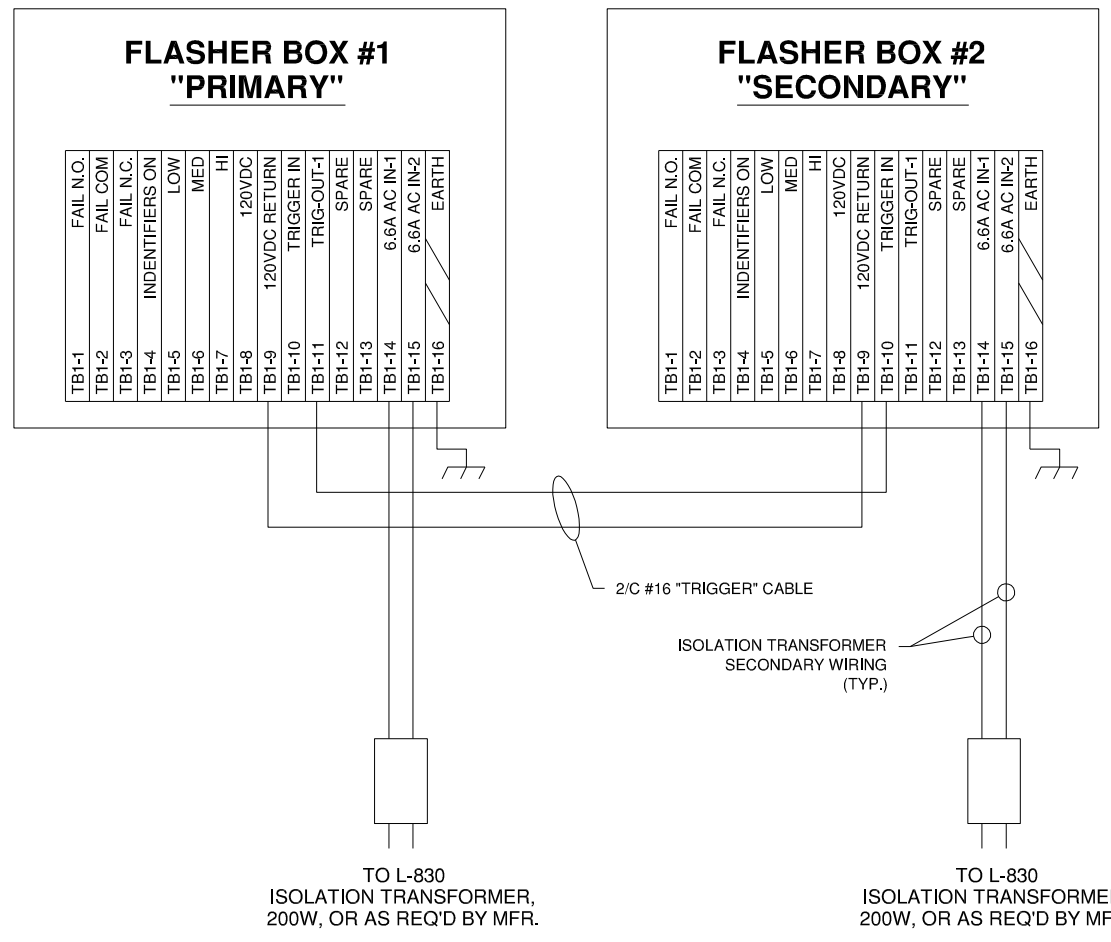


CITY OF CENTRALIA, ILLINOIS
 CENTRALIA MUNICIPAL AIRPORT
 CENTRALIA, ILLINOIS

CONSTRUCT NEW ELECTRICAL VAULT; REHABILITATE
 MRLS, PAPI & REILS ON RUNWAY 18/36
 LED REIL DETAILS

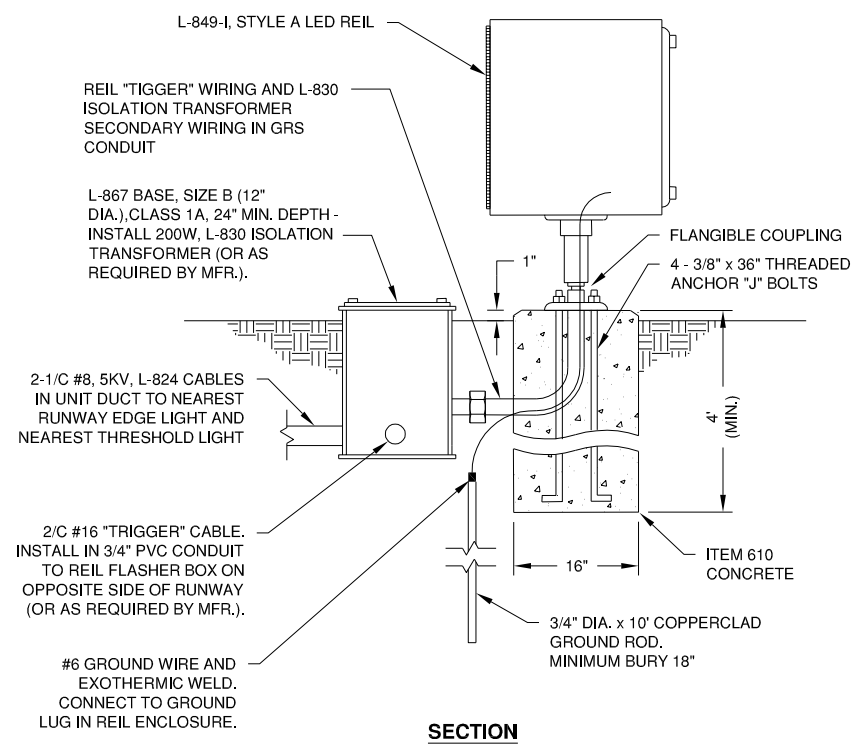
© Copyright CMT, Inc.
CMT
 CRAWFORD, MURPHY & TILLY, INC.
 CONSULTING ENGINEERS
 License No. 184-000613

DESIGN BY:	KLB
DRAWN BY:	ADD, DPA
CHECKED BY:	KLB
APPROVED BY:	RLV
DATE:	MAY 2, 2014
JOB No:	11072-02
IL PROJ. NO.	ENL-4230
PROJ. NO.	3-17-SBGP-XX
SHEET	19 OF 30 SHEETS



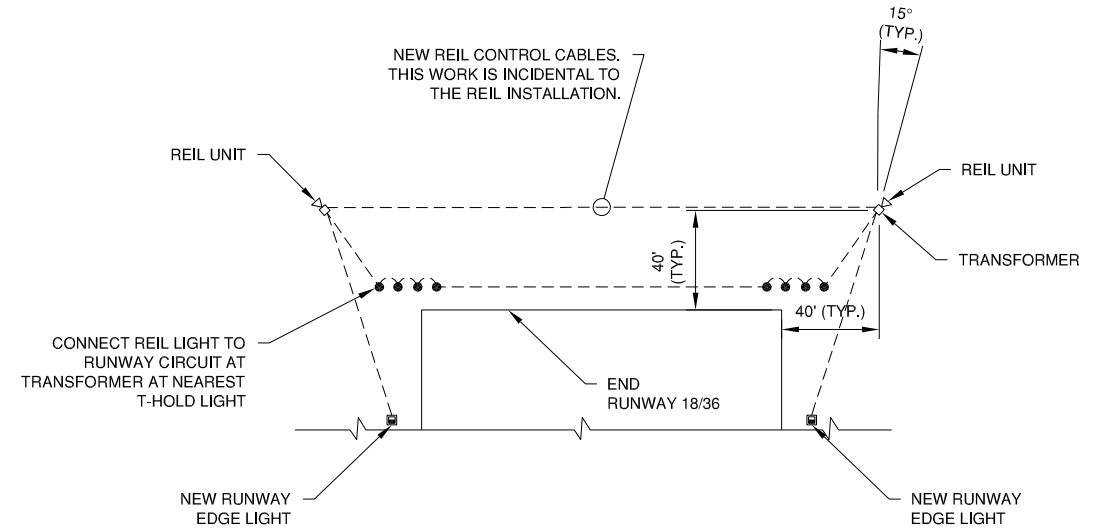
REIL WIRING NOTE
 REIL WIRING SHOWN IS BASED ON ONE MANUFACTURER. REQUIRED REIL WIRING FROM ANOTHER REIL MANUFACTURER MAY VARY FROM WIRING SHOWN. CONTRACTOR SHALL OBTAIN REIL WIRING DIAGRAM FROM MANUFACTURER OF REIL TO BE INSTALLED AND VERIFY REIL WIRING PRIOR TO INSTALLATION OF WIRING. INCLUDE WIRING DIAGRAM WITH REIL SUBMITTAL.

REIL EXTERNAL WIRING DIAGRAM
 N.T.S.



REIL DETAILS
 N.T.S.

- NOTES**
- ORIENT THE BEAM AXIS OF AN UN-BAFFLED REIL UNIT 15 DEGREES OUTWARD FROM A LINE PARALLEL TO THE RUNWAY AND INCLINED AT AN ANGLE 10 DEGREES ABOVE THE HORIZONTAL (AS SHOWN).
 IF THIS STANDARD SETTING IS OPERATIONALLY OBJECTIONABLE, PROVIDE OPTICAL BAFFLES (PER THE MANUFACTURER'S INSTRUCTIONS) AND ORIENT THE BEAM AXIS OF THE UNIT 10 DEGREES OUTWARD FROM A LINE PARALLEL TO THE RUNWAY CENTERLINE AND INCLINED AT AN ANGLE OF 3 DEGREES ABOVE THE HORIZONTAL. THIS SHALL BE INCIDENTAL TO THE PROJECT WORK.
 - THE OPTIMUM LOCATION OF THE LIGHTS IS 40 FT. FROM THE RUNWAY EDGE AND IN LINE WITH THE EXISTING RUNWAY THRESHOLD LIGHTS (AS SHOWN).
 - STENCIL HORIZONTAL AND VERTICAL AIMING ANGLES ON EACH REIL FLASH HEAD OR EQUIPMENT ENCLOSURE. THE NUMERALS MUST BE BLACK AND ONE INCH (1") MINIMUM HEIGHT.



PLAN VIEW
 N.T.S.