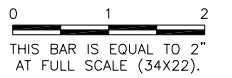


CE032

REVISIONS		
NUMBER	BY	DATE



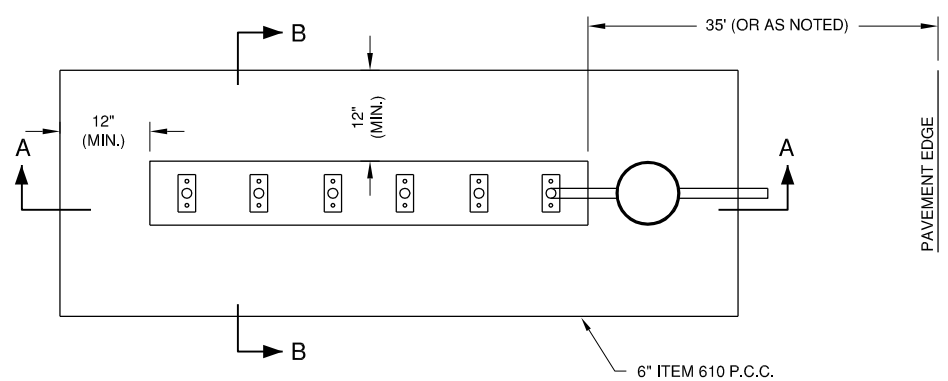
CITY OF CENTRALIA, ILLINOIS
 CENTRALIA MUNICIPAL AIRPORT
 CENTRALIA, ILLINOIS

CONSTRUCT NEW ELECTRICAL VAULT; REHABILITATE
 MIRLS, PAPI & REILS ON RUNWAY 18/36
 AIRFIELD SIGN DETAILS

© Copyright CMT, Inc.



DESIGN BY:	KLB
DRAWN BY:	ADD, DPA
CHECKED BY:	KLB
APPROVED BY:	RLV
DATE:	MAY 2, 2014
JOB No:	11072-02
IL PROJ. NO. ENL-4230 PROJ. NO. 3-17-SBGP-XX	
SHEET	20 OF 30 SHEETS



PLAN VIEW
 N.T.S.

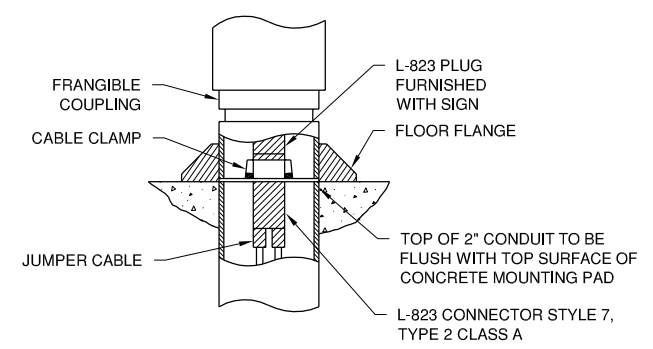
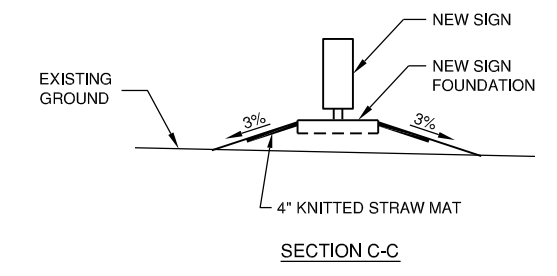
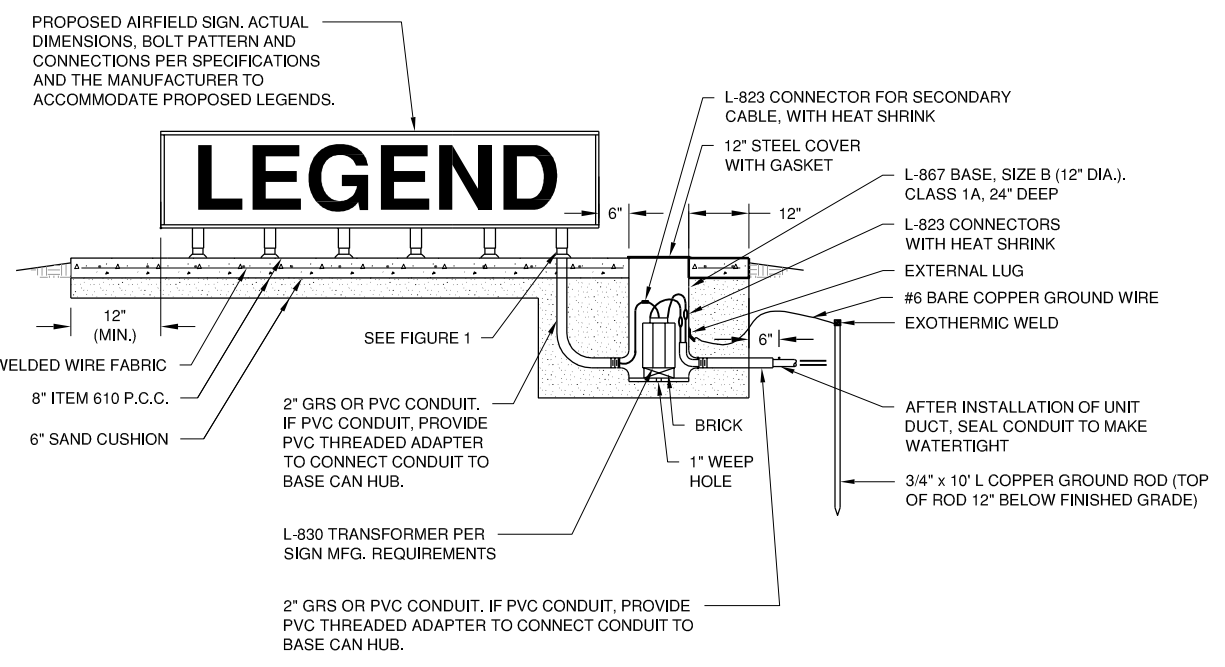


FIGURE 1 - ELECTRICAL CONNECTION DETAIL
 N.T.S.

- NOTES:**
- ESTIMATED 1 C.Y. OF EMBANKMENT MAY BE REQUIRED TO CONSTRUCT SIGN BASE FOUNDATION. COSTS TO CONSTRUCT SHALL BE INCIDENTAL TO SIGN PAY ITEM.
 - 4" OF KNITTED STRAW MAT SHALL BE PLACED AROUND THE PROTECTION APRON. COST FOR MAT SHALL BE INCIDENTAL TO SIGN PAY ITEM.



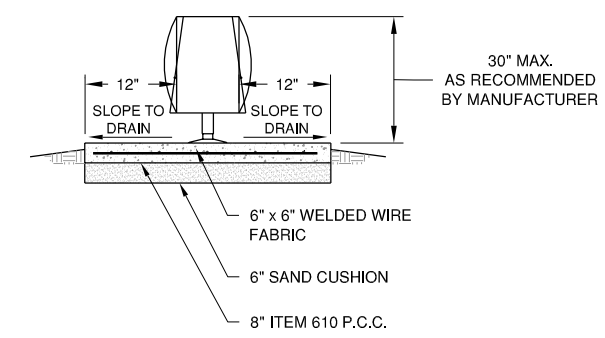
L-858 AIRFIELD SIGN EMBANKMENT DETAILS
 N.T.S.



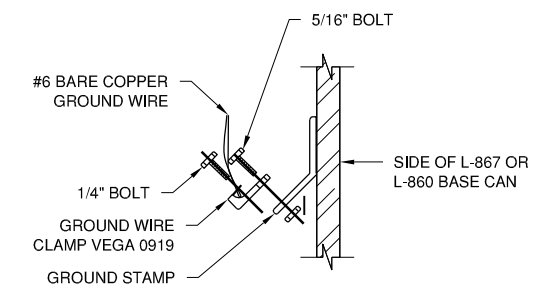
SECTION A-A
 N.T.S.

L-858Y GUIDANCE - BLACK LEGEND ON YELLOW BACKGROUND
 L-858L LOCATION - YELLOW LEGEND AND BORDER ON A BLACK BACKGROUND
 L-858R MANDATORY - WHITE LEGEND ON A RED BACKGROUND

- AIRFIELD SIGN NOTES**
- TRANSFORMER WATTAGE SHALL BE AS REQUIRED BY SIGN MANUFACTURER.
 - SIGN LEGEND SHALL BE AS SHOWN IN THE PLANS.
 - SIGNS SHALL BE SIZE 2, STYLE 2, CLASS 2.
 - CONTRACTOR SHALL SUBMIT SHOP DRAWINGS WITH NEW LEGENDS FOR APPROVAL PRIOR TO MANUFACTURING SIGN.
 - PROVIDE 3 FEET OF CABLE SLACK IN BASE CAN.



SECTION B-B
 N.T.S.



FACTORY GROUND LUG DETAIL
 N.T.S.

K:\Centralia\1107202\Drawn Sheets