

- EXISTING TERMINAL BUILDING. FOR INFORMATION ON REMOVAL OF EXISTING ITEMS, EQUIPMENT, CONDUIT AND WIRING IN THIS BUILDING, SEE TERMINAL BLDG ELECTRICAL 1 SHEET. FOR INFORMATION ON NEW ITEMS, EQUIPMENT, CONDUIT AND WIRING IN THIS BUILDING, SEE TERMINAL BLDG ELECTRICAL 2 SHEET.
- EXISTING AIRFIELD LIGHTING VAULT. FOR INFORMATION ON REMOVAL OF EXISTING ITEMS, EQUIPMENT, CONDUIT AND WIRING, SEE TERMINAL BLDG ELECTRICAL 1 SHEET.
- NEW 300A, 208Y/120V SERVICE TO NEW AIRFIELD LIGHTING VAULT: TWO #1/0 PER PHASE, TWO #1/0 NEUTRAL, TWO #4 GROUND IN TWO 2" PVC CONDUITS.
- NEW L-821 PANEL CONTROL WIRING IN 3" PVC CONDUIT TO L-821 RELAY PANEL IN NEW VAULT: FOUR 5/C #14 (RWY & TXY CONTROL) THREE 4/C #14 (PCAL INDICATING LIGHT/SPARE TOGGLE SWITCH CONTROL), ONE 5/C #14 (SPARE), AND A #10 GROUND.
- SEE NOTES #3 & #4, ABOVE, FOR CONTENTS.
- NEW PRE-ENGINEERED VAULT BUILDING, 10' X 25' X 9'H, DELIVERED TO JOB SITE AND PLACED ON A CONCRETE SLAB. FOR ADDITIONAL INFORMATION ON THIS BUILDING, SEE THE SPECIFICATIONS AND VARIOUS PLAN SHEETS. DO NOT INSTALL NEW VAULT CLOSER THAN 20 FEET FROM FENCES.

- NEW 4" WIDE, 4" THICK CONCRETE SIDEWALK ON UNDISTURBED OR COMPACTED SOIL.
- NEW POLYMER CONCRETE HANDHOLE, OPEN-BOTTOM DESIGN, 24" X 36" X 42" DEEP, QUAZITE/HUBBELL #PG-2436-BA-42 WITH #PG-2436-HH-00-17 COVER LABELED "ELECTRICAL", OR EQUIVALENT.
- EXISTING RUNWAY 09/27 HOMERUN CABLES.
- CONTRACTOR SHALL FIELD LOCATE THE EXISTING RUNWAY 09/27 HOMERUN CABLES, AND SHALL CAREFULLY DIG THEM UP BY HAND. RE-ROUTE THE CABLES AS NEEDED TO A NEW L-867 SPLICE CAN. SPLICE EXISTING CABLES TO TWO NEW #8 L-824 5KV CABLES IN SPLICE CAN.
- TWO #8 L-824 5KV CABLES IN UNIT DUCT. RUNWAY 09/27 HOMERUN.
- EXISTING WIND CONE WIRING.
- CONTRACTOR SHALL FIELD LOCATE THE EXISTING WIND CONE WIRING, AND SHALL CAREFULLY DIG THEM UP BY HAND. RE-ROUTE THE CABLES AS NEEDED TO A NEW L-867 SPLICE CAN. SPLICE EXISTING CABLES TO NEW POWER WIRING IN SPLICE CAN. SPLICES SHALL BE 3M TYPE 82-A, OR EQUIVALENT.
- TWO #10 THWN, ONE #10 GROUND IN 3/4" PVC CONDUIT. WIND CONE POWER WIRING.

- EXISTING TAXIWAY STAKE MOUNTED EDGE LIGHT. DISCONNECT EXISTING SERIES CIRCUIT WIRING BETWEEN LIGHT FIXTURES AND ABANDON IN PLACE. CONNECT NEW TAXIWAY EDGE LIGHT HOME RUN CABLES TO EDGE LIGHT ISOLATION TRANSFORMERS.
- NEW #8 L-824 5KV CABLE IN UNIT DUCT. TAXIWAY A HOMERUN.
- TWO #8 L-824 5KV CABLES IN UNIT DUCT. RUNWAY 18/36 HOMERUN.
- TWO #4 TYPE USE, ONE #8 GND IN 1" UNIT DUCT. PAPI 18 208V POWER WIRING.
- TWO #2 TYPE USE, ONE #8 GND IN 1-1/4" UNIT DUCT. PAPI 36 208V POWER WIRING.
- EXISTING ELECTRICAL / FURNACE ROOM & UTILITY TRANSFORMER & METERING. SEE TERMINAL BLDG ELECTRICAL 1 & TERMINAL BLDG ELECTRICAL 2 SHEETS FOR WORK IN THIS AREA.
- LOCATION OF EXISTING & NEW L-821 PANEL. SEE TERMINAL BLDG ELECTRICAL 1 SHEET & L-821 DETAILS 1 SHEET FOR ADDITIONAL INFORMATION.
- SEE TERMINAL BLDG ELECTRICAL 2 SHEET FOR ADDITIONAL INFORMATION ON WORK IN THIS AREA.

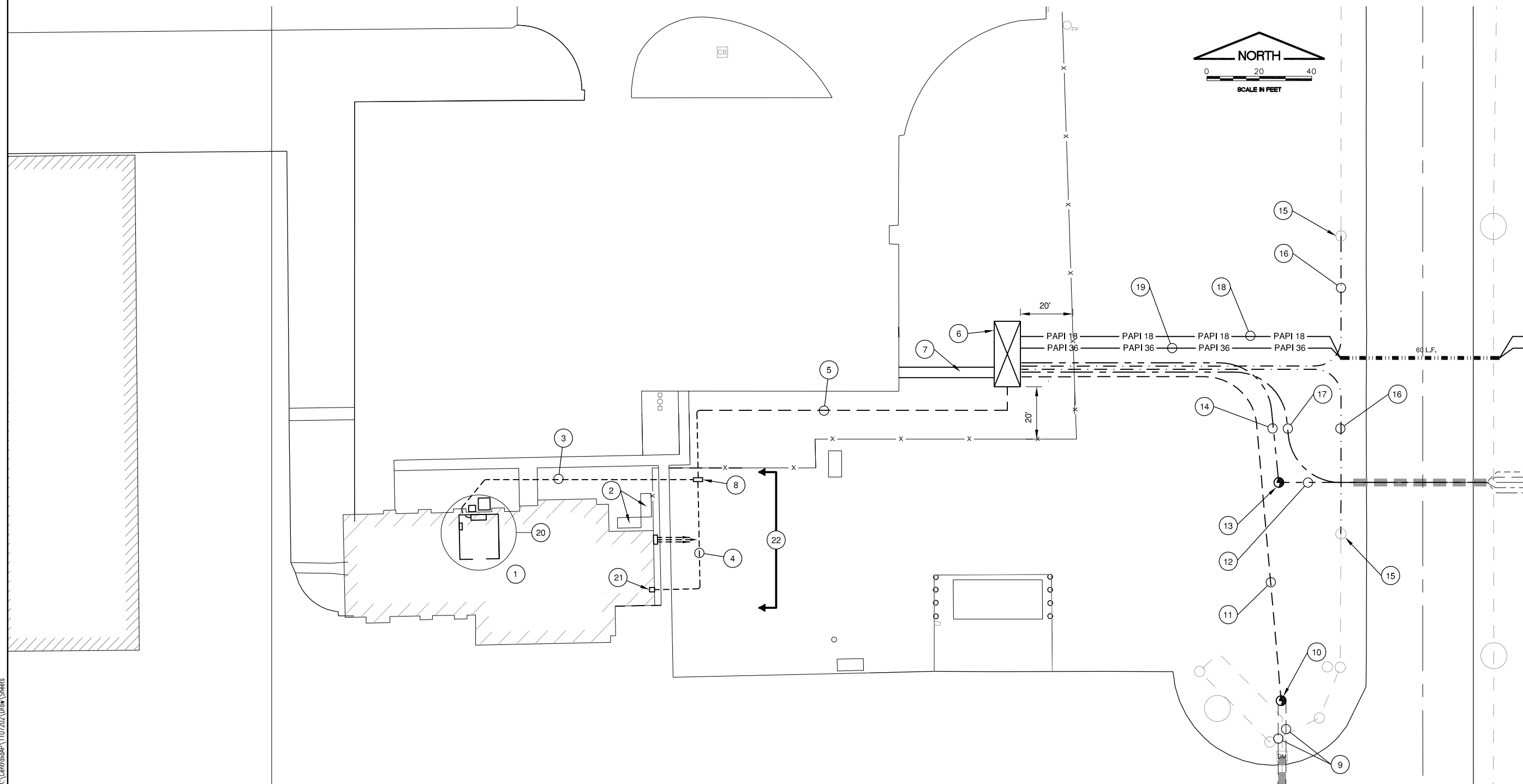
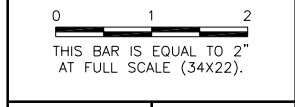
LEGEND	
	NEW STAKE MOUNTED RUNWAY EDGE LIGHT
	NEW BASE MOUNTED RUNWAY EDGE LIGHT
	NEW STAKE MOUNTED RUNWAY THRESHOLD LIGHT
	NEW BASE MOUNTED RUNWAY THRESHOLD LIGHT
	NEW AIRFIELD GUIDANCE SIGN
	NEW PAPI
	NEW REIL
	NEW SPLICE CAN
	WHITE OMNIDIRECTIONAL LENS
	WHITE/YELLOW BIDIRECTIONAL LENS
	GREEN/RED BIDIRECTIONAL LENS
	NEW 18/36 RUNWAY CIRCUIT -1/C #8 5 KV UG CABLE IN UD NEW 1836 RUNWAY HOMERUN -2/C #8 5KV CABLE IN UD
	PAPI 18
	PAPI 36
	NEW 4" DIRECTIONAL BORE
	EXISTING AIRFIELD DUCT
	EXISTING 9/27 RUNWAY CIRCUIT
	EXISTING TAXIWAY CIRCUIT
	EXISTING WIND CONE CIRCUIT

FILE: VAULT PLAN.dwg
 UPDATE BY: Dale Draughan
 PLOT DATE: 5/8/2014 12:25 PM

BASE
 Baselines
 BASE_PROP_ELEC
 1107202-V-VF2D
 LEGEND PROP LIGHT

CE032

REVISIONS		
NUMBER	BY	DATE



CITY OF CENTRALIA, ILLINOIS
 CENTRALIA MUNICIPAL AIRPORT
 CENTRALIA, ILLINOIS

 CONSTRUCT NEW ELECTRICAL VAULT; REHABILITATE
 MRLS, PAPI & REILS ON RUNWAY 18/36
 VAULT AREA PLAN

© Copyright CMT, Inc.

CMT
 CRAWFORD, MURPHY & TILLY, INC.
 CONSULTING ENGINEERS
 License No. 184-000613

DESIGN BY:	WDP
DRAWN BY:	ADD, DPA
CHECKED BY:	TM
APPROVED BY:	RLV
DATE:	MAY 2, 2014
JOB No:	11072-02
IL PROJ. NO.	ENL-4230
PROJ. NO.	3-17-SBGP-XX
SHEET	21 OF 30 SHEETS