

**CE032**

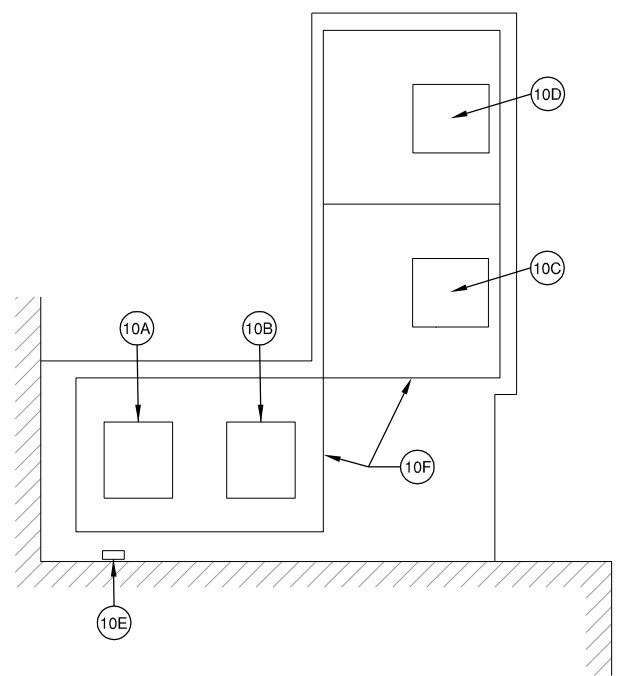
REVISIONS		
NUMBER	BY	DATE

0 1 2  
 THIS BAR IS EQUAL TO 2"  
 AT FULL SCALE (34X22).

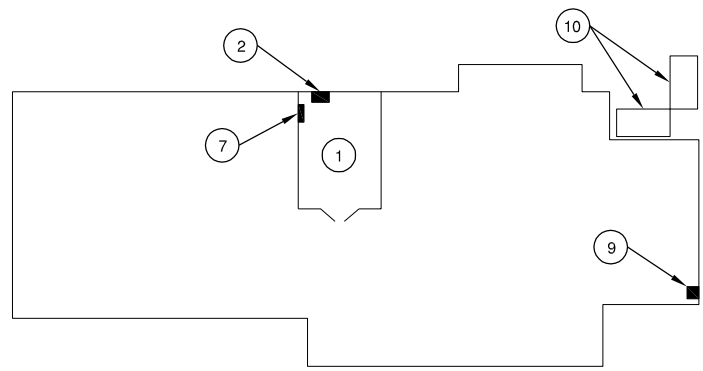
**CITY OF CENTRALIA, ILLINOIS**  
**CENTRALIA MUNICIPAL AIRPORT**  
**CENTRALIA, ILLINOIS**  
**CONSTRUCT NEW ELECTRICAL VAULT; REHABILITATE**  
**MIRLS, PAPI & REILS ON RUNWAY 18/36**  
**TERMINAL BUILDING ELECTRICAL 1**

© Copyright CMT, Inc.  
**CMT**  
 CRAWFORD, MURPHY & TILLY, INC.  
 CONSULTING ENGINEERS  
 License No. 184-000613

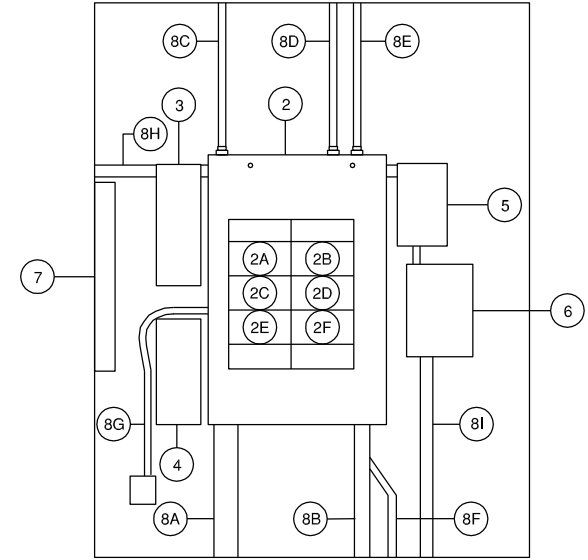
DESIGN BY:	WDP
DRAWN BY:	ADD, DPA
CHECKED BY:	TM
APPROVED BY:	RLV
DATE:	MAY 2, 2014
JOB No:	11072-02
IL PROJ. NO.	ENL-4230
PROJ. NO.	3-17-SBGP-XX
SHEET	22 OF 30 SHEETS



**EXISTING AIRFIELD LIGHTING VAULT PLAN VIEW**



**TERMINAL BUILDING**  
N.T.S.



**EXISTING POWER PANEL DETAIL**  
N.T.S.

NOTE: ALL INFORMATION ON THIS SHEET IS FROM BEST AVAILABLE INFORMATION. THE CONTRACTOR SHALL THOROUGHLY INVESTIGATE EXISTING CONDITIONS, EXISTING WIRING AND THE EQUIPMENT POWERED AND CONTROLLED. EXCEPT AS NOTED HEREIN, ALL EXISTING EQUIPMENT SHALL REMAIN POWERED IN TERMINAL BUILDING AT COMPLETION OF WORK.

1. TERMINAL BUILDING ELECTRICAL/FURNACE ROOM.
2. TERMINAL BLDG MAIN DISTRIBUTION PANELBOARD, FEDERAL PACIFIC, 400A, 208Y/120V, MAIN LUGS ONLY. TO BE DISCONNECTED AND REMOVED. TO BE REPLACED WITH NEW 800A MAIN DISTRIBUTION PANELBOARD.  
  
THIS PANELBOARD CONTAINS THE FOLLOWING FUSED DISCONNECTS, FEEDING THE FOLLOWING CIRCUITS:  
 2A. TO AVIATION GAS FUEL SYSTEM LOAD CENTER MOUNTED ON EXTERIOR EAST WALL OF TERMINAL BLDG. EXISTING CIRCUIT WIRING TO BE RECONNECTED TO NEW 800A MAIN DISTRIBUTION PANELBOARD.  
 2B. TO TERMINAL BLDG LIGHTING PANEL ON WEST WALL OF ELECTRIC ROOM (SEE BELOW).  
 2C. TO BOTH TAXIWAY REGULATOR CIRCUIT BREAKER AND RWY 09/27 REGULATOR CIRCUIT BREAKER, MOUNTED ON LEFT SIDE OF THIS PANELBOARD (SEE BELOW).  
 2D. TO TERMINAL BLDG AIR CONDITIONER ON ROOF. EXISTING CIRCUIT WIRING TO BE RECONNECTED TO NEW 800A MAIN DISTRIBUTION PANELBOARD.  
 2E. TO PARKING LOT LIGHTING CONTACTOR MOUNTED ON RIGHT SIDE OF THIS PANELBOARD (SEE BELOW).  
 2F. TO EXISTING RWY 18/36 REGULATOR IN EXISTING AIRFIELD LIGHTING VAULT AT NORTHEAST CORNER OF TERMINAL BLDG. REGULATOR TO BE RELOCATED TO NEW AIRFIELD LIGHTING VAULT. EXISTING WIRING TO REGULATOR AND EXPOSED CONDUIT SHALL BE REMOVED (SEE BELOW).
3. TAXIWAY REGULATOR CIRCUIT BREAKER. TO BE DISCONNECTED AND REMOVED. EXISTING WIRING TO REGULATOR AND EXPOSED CONDUIT SHALL BE REMOVED.
4. RWY 09/27 REGULATOR CIRCUIT BREAKER. TO BE DISCONNECTED AND REMOVED. EXISTING WIRING TO REGULATOR AND EXPOSED CONDUIT SHALL BE REMOVED.
5. PARKING LOT LIGHTING CONTACTOR. TO REMAIN AND BE RECONNECTED TO NEW 800A MAIN DISTRIBUTION PANELBOARD.
6. PARKING LOT LIGHTS LOAD CENTER. TO REMAIN UNDISTURBED.
7. TERMINAL BLDG LIGHTING PANEL. TO REMAIN AND BE RECONNECTED TO NEW

- 800A MAIN DISTRIBUTION PANELBOARD. DISCONNECT AND REMOVE EXISTING WIRING TO:
- A. EXISTING WIND CONE
  - B. EXISTING VAULT LIGHTING
  - C. EXISTING VAULT RECEPTACLES
  - D. EXISTING L-821 PANEL (IF ANY)
  - E. EXISTING REGULATOR CONTROL WIRING
  - F. ADDITIONAL CIRCUITS WIRING AS NEEDED AS PART OF THE REMOVAL OF THE EXISTING VAULT AND EXISTING L-821 PANEL.

NOTE: CONTRACTOR SHALL THOROUGHLY INVESTIGATE THE EXISTING CIRCUITS POWERED FROM THIS PANELBOARD. AT JOB COMPLETION, THE CONTRACTOR SHALL PROVIDE A NEW, TYPED (HANDWRITTEN IS NOT ACCEPTABLE) PANELBOARD SCHEDULE, LISTING ALL THE ITEMS AND LOCATIONS POWERED FROM THIS PANELBOARD.

8. EXISTING CONDUITS:
  - 8A. INCOMING SERVICE WIRING FROM UTILITY TRANSFORMER. REMOVE WIRING. REMOVE EXPOSED CONDUIT TO FLOOR AND SEAL OPENING WITH NON-SHRINK GROUT.
  - 8B. WIRING TO TERMINAL BLDG LIGHTING PANEL. TO BE RECONNECTED TO CIRCUIT BREAKER IN NEW 800A MAIN DISTRIBUTION PANELBOARD.
  - 8C. WIRING TO AVIATION GAS FUEL SYSTEM LOAD CENTER MOUNTED ON EXTERIOR EAST WALL OF TERMINAL BLDG. TO BE RECONNECTED TO CIRCUIT BREAKER IN NEW 800A MAIN DISTRIBUTION PANELBOARD.
  - 8D. 120V AND 208V WIRING TO EXISTING AIRFIELD LIGHTING VAULT EQUIPMENT IN VAULT AT NORTHEAST CORNER OF TERMINAL BLDG. REMOVE WIRING. REMOVE EXPOSED CONDUIT AND SEAL OPENING WITH NON-SHRINK GROUT.
  - 8E. WIRING TO AIR CONDITIONER ON ROOF. TO BE RECONNECTED TO CIRCUIT BREAKER IN NEW 800A MAIN DISTRIBUTION PANELBOARD.
  - 8F. THIS WIRING IS BELIEVED TO GO TO TERMINAL BUILDING BATTERY POWERED EXIT SIGNS AT DOORS. CONTRACTOR SHALL CONFIRM, AND IF SO, THIS WIRING SHALL BE RECONNECTED TO A SPARE 15A OR 20A CIRCUIT BREAKER IN TERMINAL BUILDING LIGHTING PANEL, WITH NEW CONDUIT AND WIRING AS NEEDED.
  - 8G. THIS WIRING IS BELIEVED TO BE ABANDONED WIRING TO A DEMOLISHED T-HANGAR. IF SO, REMOVE WIRING AND REMOVE EXPOSED CONDUIT. NOTE: ALSO REMOVE EXPOSED CONDUIT ON OUTSIDE OF BUILDING TO BELOW GRADE.
  - 8H. 120V POWER AND CONTROL WIRING FROM LIGHTING PANEL TO EXISTING AIRFIELD LIGHTING EQUIPMENT IN VAULT AT NORTHEAST CORNER OF TERMINAL BLDG. REMOVE WIRING AND CONDUIT. RELABELLED UNUSED CIRCUIT BREAKERS IN LIGHTING PANEL AS "SPARE".
  - 8I. EXISTING WIRING AND CONDUIT TO REMAIN UNDISTURBED.

9. L-821 CONTROL PANEL. TO BE REMOVED, INCLUDING CABINET. REMOVE ALL WIRING.
10. EXISTING AIRFIELD LIGHTING VAULT. DISCONNECT THE FOLLOWING:
  - 10A. EXISTING ABANDONED 4KW REGULATOR. THE REGULATOR SHALL BE DISPOSED OF OFFSITE UNLESS REQUESTED OTHERWISE BY THE OWNER.
  - 10B. EXISTING RUNWAY 18/36 REGULATOR. THE REGULATOR SHALL BE DISPOSED OF OFFSITE UNLESS REQUESTED OTHERWISE BY THE OWNER.
  - 10C. EXISTING TAXIWAY REGULATOR. THIS REGULATOR SHALL BE RELOCATED TO THE NEW VAULT.
  - 10D. EXISTING RUNWAY 09/27 REGULATOR. THIS REGULATOR SHALL BE RELOCATED TO THE NEW VAULT.
  - 10E. EXISTING PHOTOCELL AND CONTROLS ON TERMINAL BUILDING WALL. ITEMS NOT REQUESTED TO BE TURNED OVER TO THE OWNER SHALL BE DISPOSED OF OFFSITE.
  - 10F. AFTER THE REGULATORS HAVE BEEN REMOVED, ALL REMAINING EQUIPMENT, MATERIALS, CONDUITS AND WIRING INSIDE THE METAL TRANSCLUSURES SHALL BE REMOVED AND DISPOSED OF OFFSITE. ANY CONDUIT PENETRATIONS SHALL BE REMOVED TO FLUSH WITH THE CONCRETE PAD FLOORS, AND SHALL BE FILLED WITH NON-SHRINK GROUT, FLUSH WITH FLOOR.

AS REQUESTED BY THE OWNER, THE TRANSCLUSURES SHALL CLEANED AND LEFT EMPTY, FOR USE BY THE OWNER. THIS WORK SHALL BE AS DIRECTED BY THE OWNER AND THE R.E. CONTRACTOR SHALL COORDINATE THIS WORK.