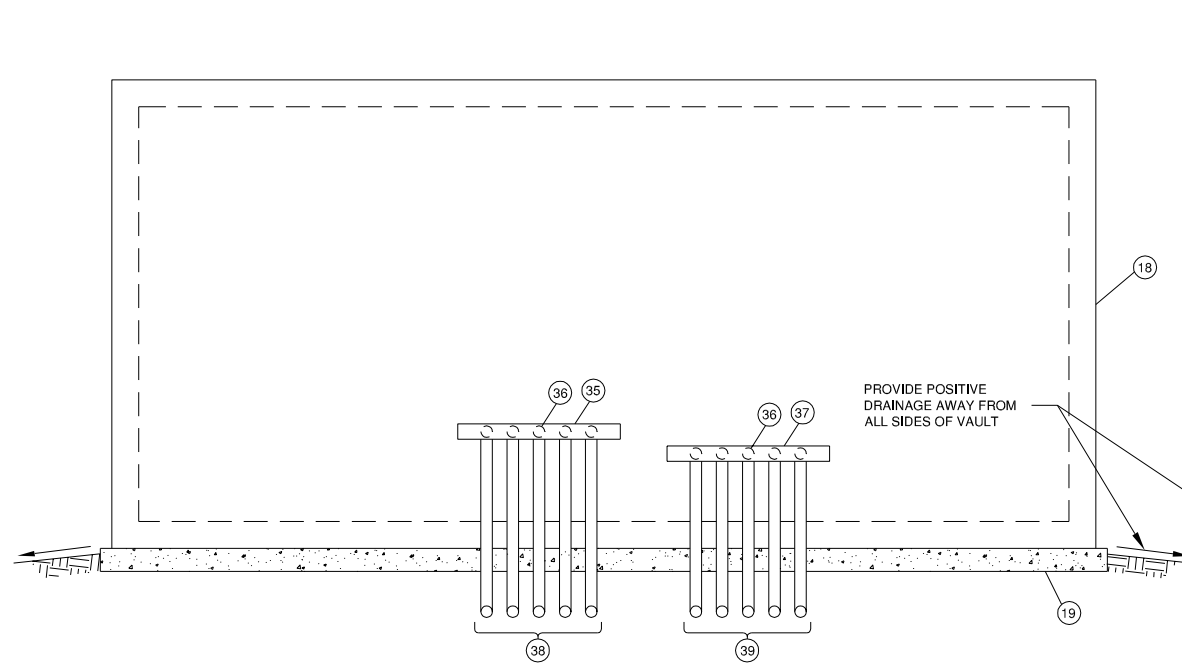
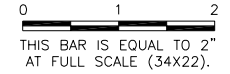
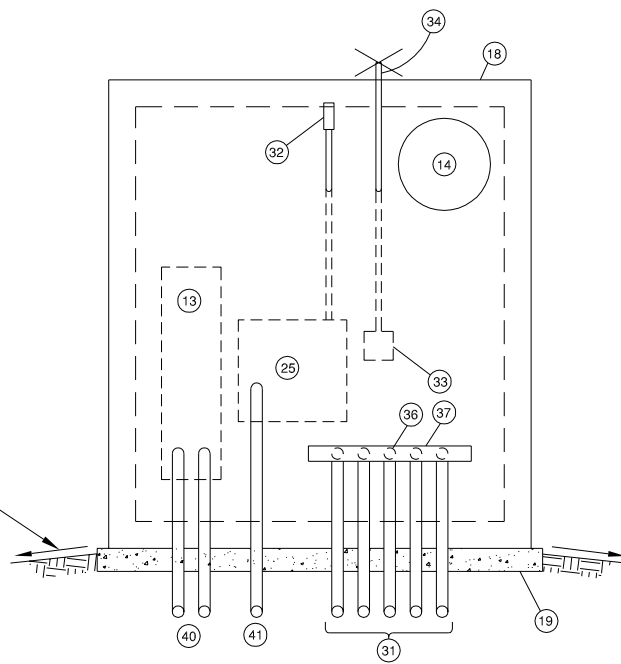


CE032

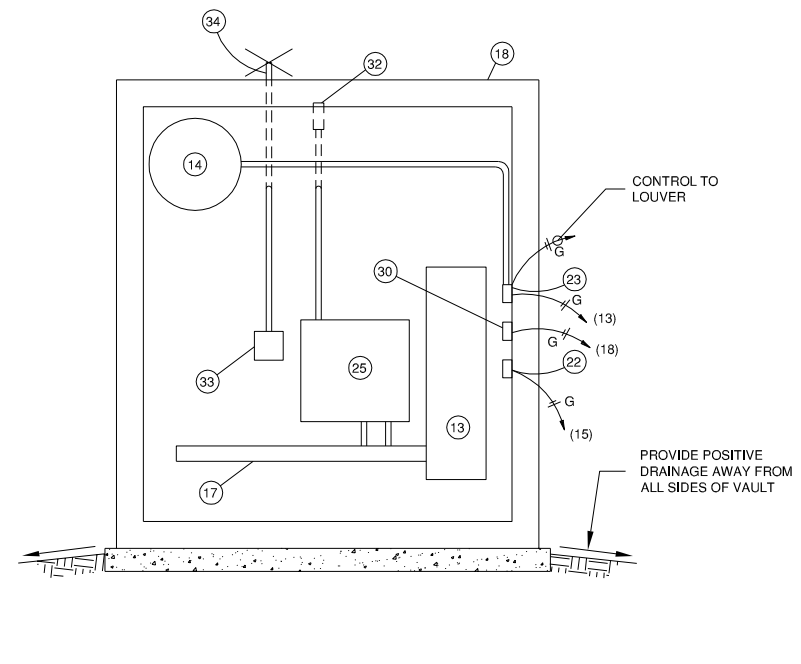
REVISIONS		
NUMBER	BY	DATE



SECTION C
N.T.S.



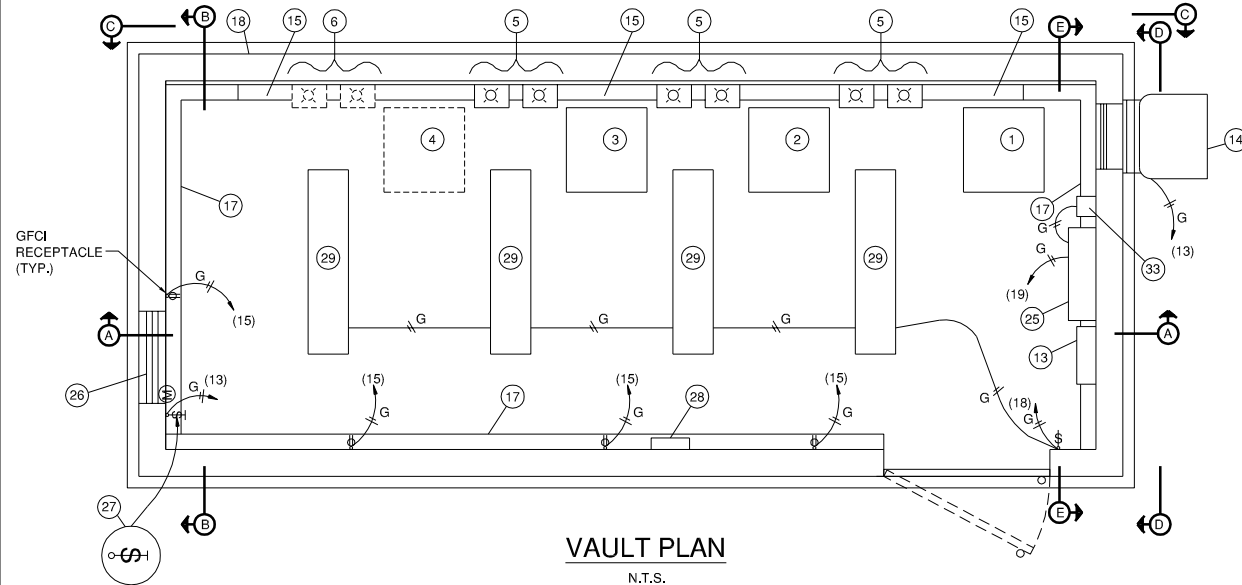
SECTION D
N.T.S.



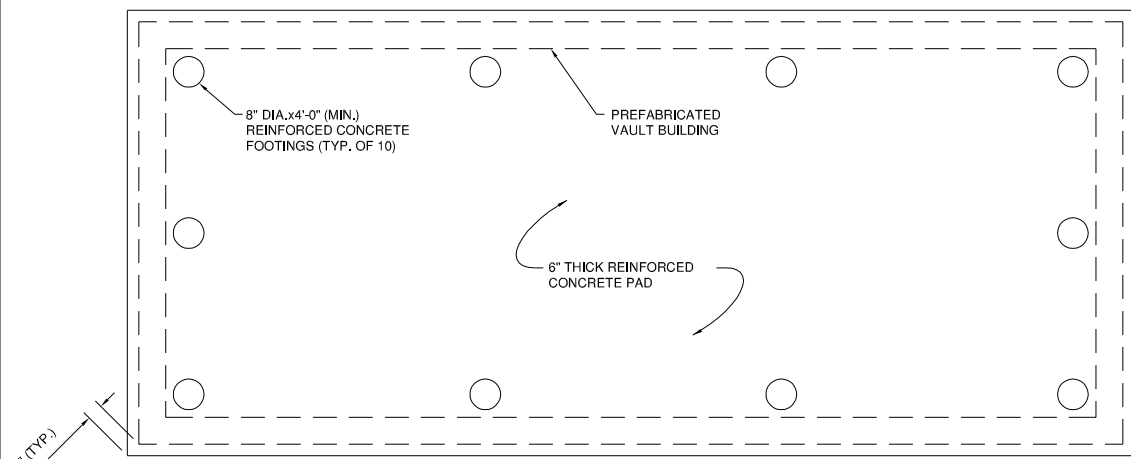
SECTION E
N.T.S.

VAULT DETAILS 2 NOTES

- NEW 7.5 KW REGULATOR, 208V INPUT, 3-STEP 6.6A OUTPUT. PROVIDE ENGRAVED NAMEPLATE READING "RUNWAY 18/36".
- RELOCATED 10 KW REGULATOR, 208V INPUT, 3-STEP 6.6A OUTPUT. PROVIDE ENGRAVED NAMEPLATE READING "TAXIWAY A".
- RELOCATED 7.5 KW REGULATOR, 208V INPUT, 3-STEP 6.6A OUTPUT. PROVIDE ENGRAVED NAMEPLATE READING "RUNWAY .09/27".
- SPACE FOR FUTURE 10 KW REGULATOR.
- REGULATOR INDICATING LIGHTS ASSEMBLY. FOR ADDITIONAL INFORMATION, SEE REGULATOR INDICATING LIGHT DETAILS SHEET.
- SPACE FOR FUTURE REGULATOR INDICATING LIGHTS ASSEMBLY.
- POWER DISTRIBUTION PANELBOARD, 30-POLE, 400A, 208Y/120V, 3-PHASE, 4-WIRE, WITH 300A, 3P MAIN CIRCUIT BREAKER, SQUARE D NQ, OR EQUIVALENT.
- EXHAUST FAN, GREENHECK MODEL CWB-300-7, 120V, 3/4 HP, 6,200 CFM, WITH MOTORIZED BACKDRAFT DAMPER AND MOTOR STARTER MS1P-1, OR EQUIVALENT.
- 4"x4" NEMA 1 HIGH VOLTAGE WIREWAY, INSTALLED ABOVE LOW VOLTAGE WIREWAY. INSTALL A MINIMUM OF TWO ADHESIVE WARNING LABELS ON HINGED DOOR, READING "CAUTION: HIGH VOLTAGE".
- 4"x4" LOW VOLTAGE WIREWAY.
- PRE-FABRICATED CONCRETE EQUIPMENT SHELTER, 25'x10'x9'H. SEE SPECIFICATIONS. PROVIDE WARNING SIGN ON DOOR READING "CAUTION: HIGH VOLTAGE".
- STEEL REINFORCED CONCRETE VAULT PAD.
- EXHAUST FAN THERMOSTAT, LINE VOLTAGE, HONEYWELL T6051A WITH HONEYWELL Q651A1009 AUTO-OFF-ON SUBBASE. PROVIDE ENGRAVED NAMEPLATE READING "EXHAUST FAN".
- L-821 RELAY CABINET.
- INTAKE LOUVER, RUSKIN ELF375DXH, 48"Wx42"H, MIN. FREE AREA 7.10 SQ.FT. WITH EXTENDED SILL, BIRD SCREEN, KYNAR FINISH TO MATCH SHELTER COLOR (OR AS DIRECTED BY OWNER), CD 35 MOTORIZED DAMPER (POWER-OPEN/SPRING-CLOSE), OR EQUIVALENT. NOTE: CONTRACTOR SHALL PROVIDE AN INTERIOR FILTER RACK WITH A REPLACEABLE FILTER.
- FRACTIONAL HORSEPOWER STARTER WITH OVERLOADS SIZED FOR LOUVER MOTOR. CONTRACTOR SHALL COORDINATE WITH MANUFACTURER.
- ARCHITECTURAL WALL HEATER, 4.8KW, 208V, SINGLE-PHASE, INDEECO WAI SERIES, CAT. #933U04800C, WITH SURFACE MOUNT FRAME, OR EQUIVALENT. WIRING TO PANELBOARD SHALL BE TWO #10 THWN, ONE #10 GROUND, IN 3/4" CONDUIT (CKT. 9).
- SURFACE MOUNT NON-METALLIC FLUORESCENT LIGHT FIXTURE, LITHONIA FEM4-2-54T5HO-S1-IMACL-MVOLT-GEB10IS-LP841-USPOM, OR EQUIVALENT, WITH TWO 54W T5HO FLUORESCENT BULBS.
- TOGGLE SWITCH.
- FIVE 2" SPARE CONDUITS. CAP AND MAKE WATER TIGHT.
- PHOTOCELL TORK 2100, OR EQUIVALENT
- L-854 RADIO CONTROLLER. PROVIDE ENGRAVED NAMEPLATE READING "L-854 RADIO CONTROLLER (PILOT CONTROL)".
- L-854 RADIO CONTROLLER ANTENNA. MOUNT TO VAULT WALL, AS NEEDED FOR PROPER RECEPTION FROM ALL AIRPLANES IN THE AIR (CONTRACTOR SHALL FIELD VERIFY). THE COAXIAL CABLE SHALL EXIT THROUGH WALL THROUGH SEALED OPENING. PROVIDE DRIP LOOP IN EXTERIOR SIGNAL CABLE.
- 6"x6" NEMA 3R HIGH VOLTAGE WIREWAY. MOUNT AT SAME HEIGHT AS INTERIOR HIGH VOLTAGE WIREWAY. INSTALL A WEATHERPROOF ADHESIVE WARNING LABEL ON HINGED DOOR READING "CAUTION: HIGH VOLTAGE".
- 2" GRS CONDUIT NIPPLES AS NEEDED BETWEEN INTERIOR AND EXTERIOR WIREWAYS.
- 6"x6" NEMA 3R LOW VOLTAGE WIREWAY. MOUNT AT SAME HEIGHT AS INTERIOR LOW VOLTAGE WIREWAY.
- 3" GRS CONDUITS TO MIN. 24" BELOW GRADE AND MIN. OF 5 FEET FROM BUILDING. INSTALL THE FOLLOWING CIRCUITS:
 - TWO 1/C #8, L-824, 5KV CABLES IN UNIT DUCT (RUNWAY 18/36 EDGE LIGHTS)
 - 1/C #8, L-824, 5KV CABLE IN UNIT DUCT (RWY 18/36 TAXIWAY EDGE LIGHTS)
 - 1/C #8, L-824, 5KV CABLE IN UNIT DUCT (RWY 18/36 TAXIWAY EDGE LIGHTS)
 - TWO 1/C #8, L-824, 5KV CABLES IN UNIT DUCT (RUNWAY 09/27 EDGE LIGHTS)
 UNUSED 3" CONDUITS SHALL BE CAPPED AND MADE WATERTIGHT.
- 3" GRS CONDUITS TO MIN. 24" BELOW GRADE AND MIN. OF 5 FEET FROM BUILDING. INSTALL THE FOLLOWING CIRCUITS:
 - TWO #4 TYPE USE, ONE #8 GND IN 1" UNIT DUCT (CKT.6). PAPI 18 208V POWER WIRING
 - TWO #2 TYPE USE, ONE #8 GND IN 1-1/4" UNIT DUCT (CKT. 14). PAPI 36 208V POWER WIRING
 - TWO #10 USE (120V, CKT. 17), ONE #10 GROUND IN UNIT DUCT TO PRIMARY WIND CONE
 UNUSED 3" GRS CONDUITS SHALL BE CAPPED AND MADE WATERTIGHT.
- TWO #1/0 THWN PER PHASE, TWO #1/0 NEUTRAL, ONE #4 GROUND IN TWO 2" PVC CONDUITS TO TERMINAL BLDG
- FOUR 5/C #14 (RWY & TXY CONTROL), THREE 4/C #14 (PCAL INDICATING LIGHT/SPARE TOGGLE SWITCH CONTROL), ONE 5/C #14 (SPARE), 600V, BELDEN, OR EQUIVALENT, ONE #10 GROUND, TO L-821 PANEL IN TERMINAL BLDG.



VAULT PLAN
N.T.S.



CONCRETE PAD DETAIL
N.T.S.

CITY OF CENTRALIA, ILLINOIS
CENTRALIA MUNICIPAL AIRPORT
CENTRALIA, ILLINOIS
CONSTRUCT NEW ELECTRICAL VAULT; REHABILITATE
MIRLS, PAPI & REILS ON RUNWAY 18/36
VAULT DETAILS 2

© Copyright CMT, Inc.

CMT
 CRAWFORD, MURPHY & TILLY, INC.
 CONSULTING ENGINEERS
 License No. 184-000613

DESIGN BY:	WDP
DRAWN BY:	ADD, DPA
CHECKED BY:	TM
APPROVED BY:	RLV
DATE:	MAY 2, 2014
JOB No:	11072-02
IL. PROJ. NO. ENL-4230 PROJ. NO. 3-17-SBGP-XX	
SHEET	25 OF 30 SHEETS

K:\Centralia\1107202\Drawn Sheets