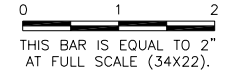


CE032

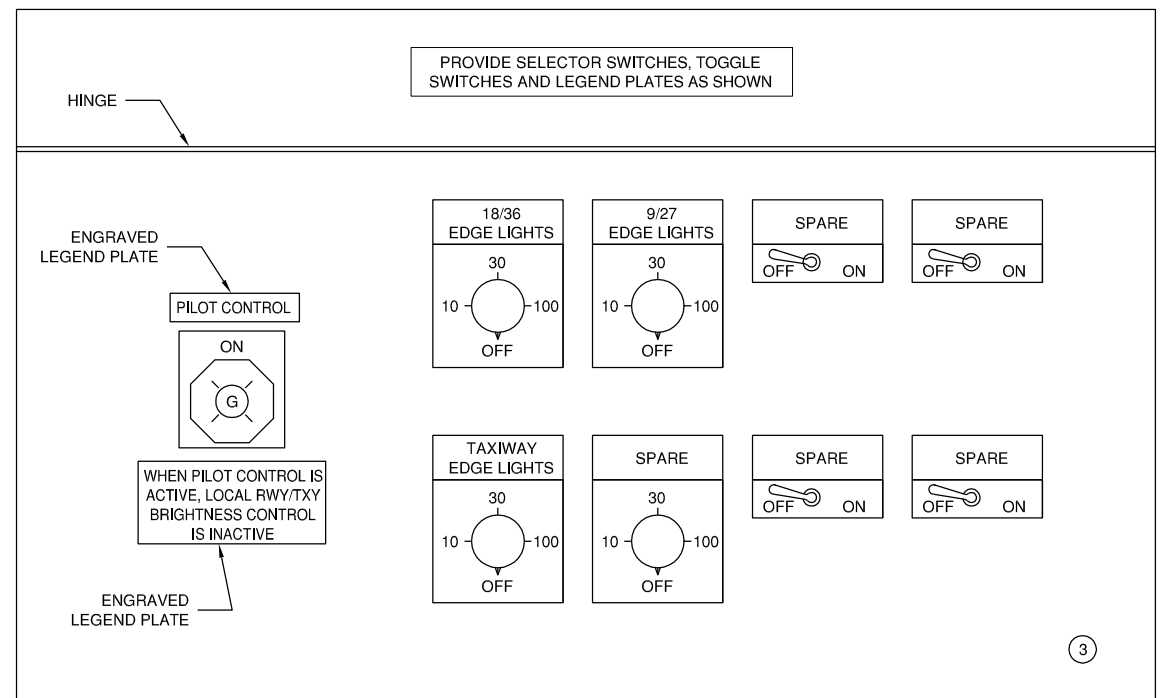
REVISIONS		
NUMBER	BY	DATE



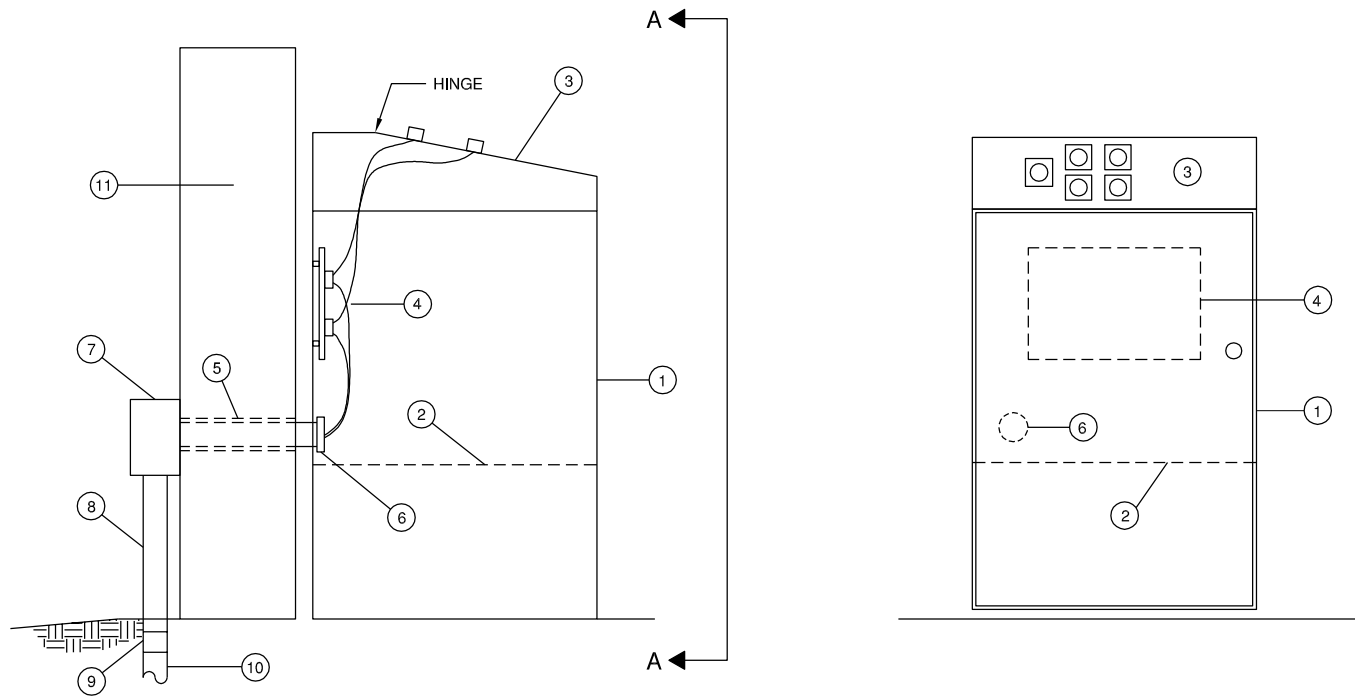
CITY OF CENTRALIA, ILLINOIS
 CENTRALIA MUNICIPAL AIRPORT
 CENTRALIA, ILLINOIS
 CONSTRUCT NEW ELECTRICAL VAULT; REHABILITATE
 MRSL, PAPI & REILS ON RUNWAY 18/36
 L-821 DETAILS 1

© Copyright CMT, Inc.
CMT
 CRAWFORD, MURPHY & TILLY, INC.
 CONSULTING ENGINEERS
 License No. 184-000613

DESIGN BY:	WDP
DRAWN BY:	ADD, DPA
CHECKED BY:	TM
APPROVED BY:	RLV
DATE:	MAY 2, 2014
JOB No:	11072-02
IL. PROJ. NO. ENL-4230 PROJ. NO. 3-17-SBGP-XX	
SHEET	27 OF 30 SHEETS



FLIP-UP TOP PANEL VIEW



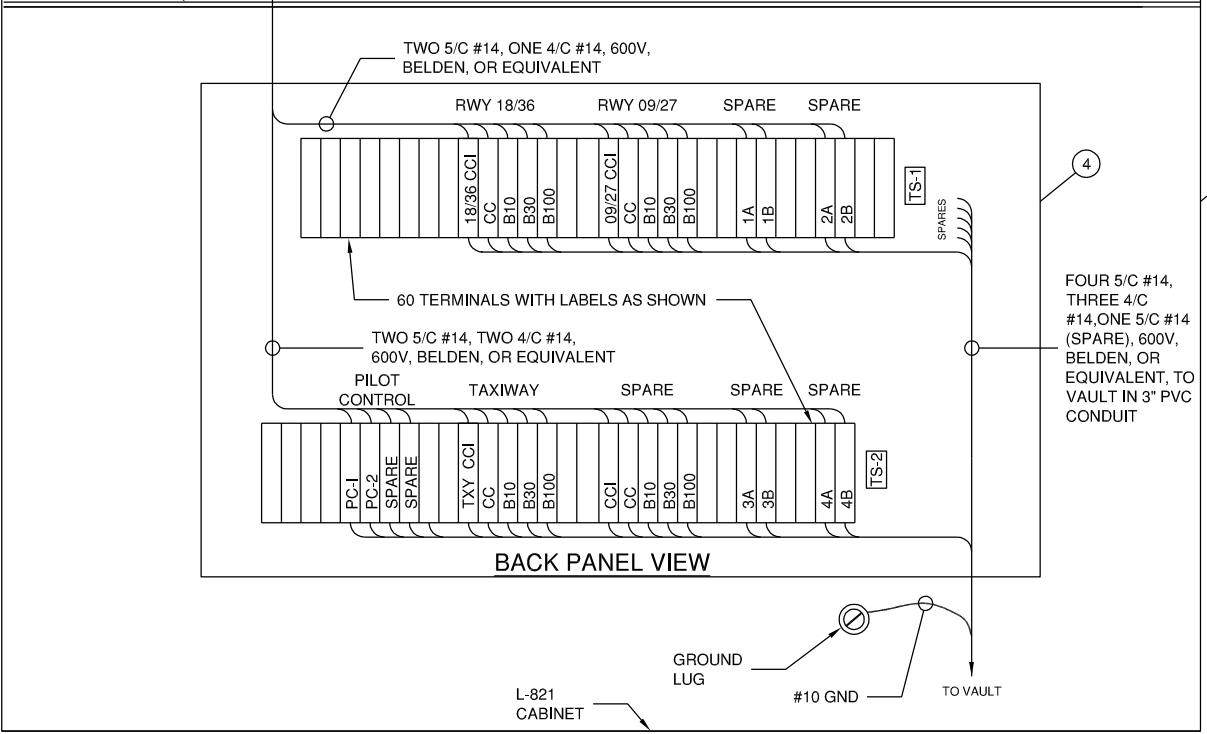
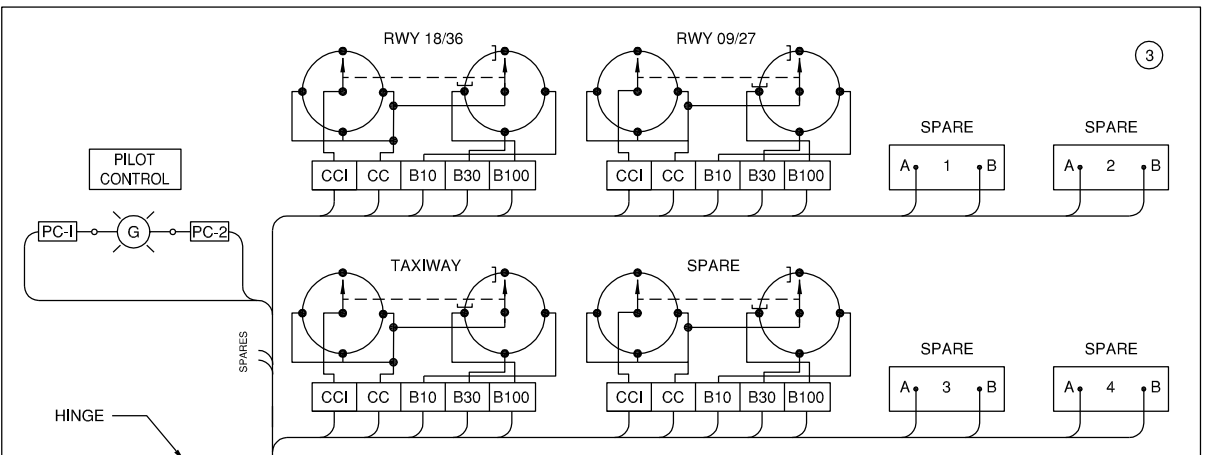
ELEVATION

SECTION A-A

- NOTES:
- L-821 STEEL CABINET SIZED AS REQUIRED (NOM. 24" SQ. X 36"H), WITH HINGED DOOR, BAKED ENAMEL CHARCOAL FINISH. PROVIDE OPEN TOP FOR MOUNTING L-821 PANEL ENCLOSURE.
 - ADJUSTABLE INTERIOR SHELF.
 - L-821 PANEL AND STEEL ENCLOSURE WITH BAKED ENAMEL CHARCOAL FINISH, MOUNTED ON TOP OF CABINET. PROVIDE HINGE AS NOTED AT TOP OF L-821 PANEL.
 - 600V TERMINAL STRIPS ON MOUNTING PANEL, STAND-OFF MOUNTED TO BACK OF ENCLOSURE.
 - CORE DRILL THROUGH TERMINAL BUILDING WALL AND INSTALL 3" GRS CONDUIT NIPPLE. SEAL AROUND CONDUIT AFTER INSTALLATION WITH NON-SHRINK GROUT.
 - INSULATED BUSHING.
 - NEMA 4 JUNCTION BOX, SIZED AS REQUIRED.
 - 3" GRS CONDUIT.
 - 3" GRS TO PVC ADAPTER.
 - 3" SCHEDULE 40 PVC CONDUIT, DIRECT BURY, TO NEW VAULT.
 - TERMINAL BUILDING WALL.

L-821 CABINET IN TERMINAL

NTS



BACK PANEL VIEW

K:\Centralia\1107202\Draws\Sheets