

P0018

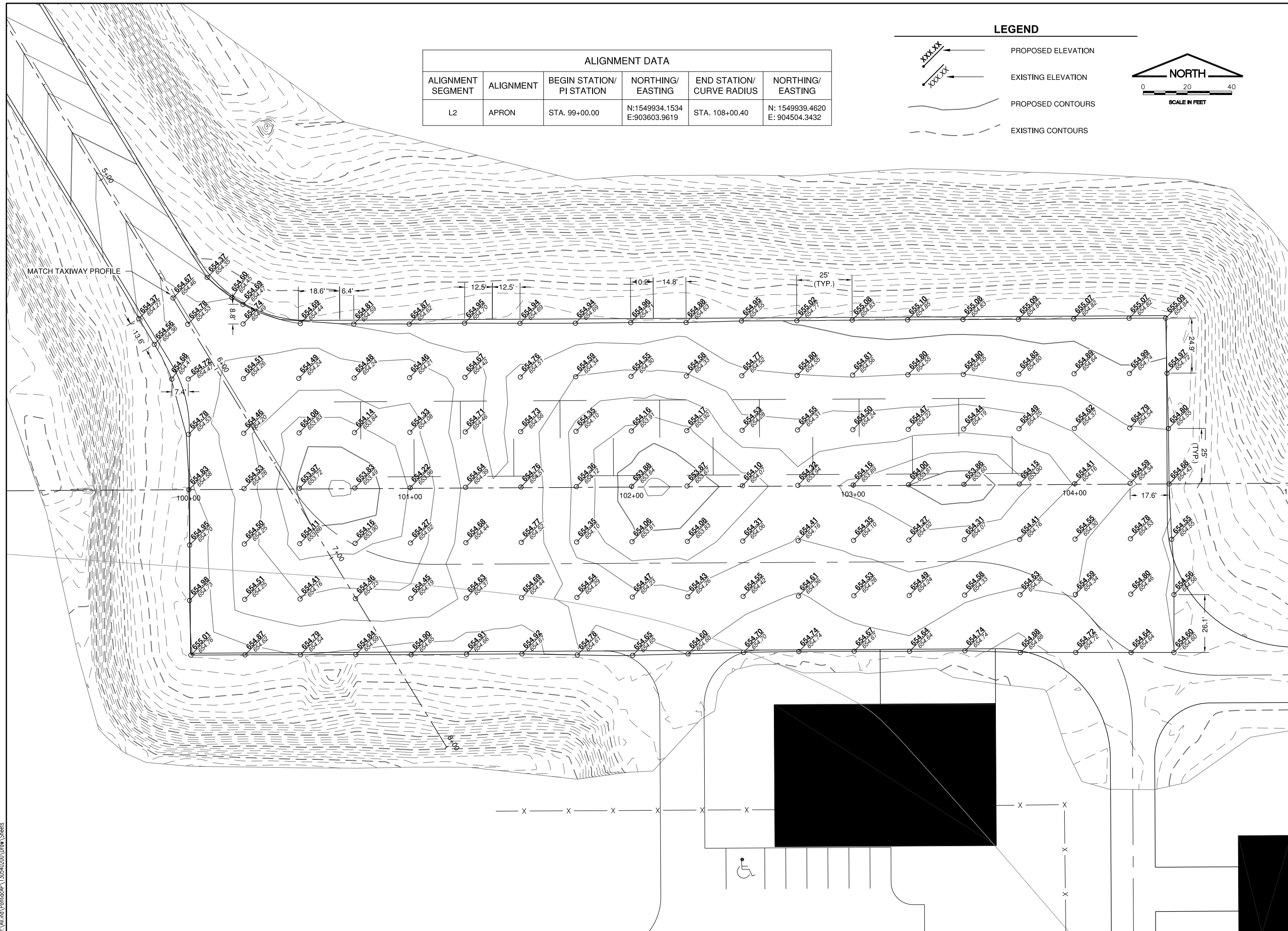
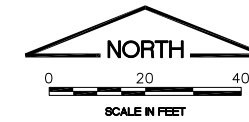
REVISIONS		
NUMBER	BY	DATE

0 1 2
 THIS BAR IS EQUAL TO 2"
 AT FULL SCALE (34X22).

ALIGNMENT DATA					
ALIGNMENT SEGMENT	ALIGNMENT	BEGIN STATION/ PI STATION	NORTHING/ EASTING	END STATION/ CURVE RADIUS	NORTHING/ EASTING
L2	APRON	STA. 99+00.00	N:1549934.1534 E:903603.9619	STA. 108+00.40	N: 1549939.4620 E: 904504.3432

LEGEND

- PROPOSED ELEVATION
- EXISTING ELEVATION
- PROPOSED CONTOURS
- EXISTING CONTOURS



**PONTIAC MUNICIPAL AIRPORT
 PONTIAC, ILLINOIS
 REHABILITATE APRON AND CONNECTING TAXIWAY
 APRON STAKING PLAN 1**

© Copyright CMT, Inc.

CMT
 CRAWFORD, MURPHY & TILLY, INC.
 CONSULTING ENGINEERS
 License No. 184-000613

DESIGN BY:	JEF
DRAWN BY:	CMT
CHECKED BY:	JEF
APPROVED BY:	JEF
DATE:	APRIL 18, 2014
JOB No:	1305402
IL PROJ. NO. PNT-4142 AIP PROJ. NO. 3-17-SBGP-XX	
SHEET 10 OF 17 SHEETS	

V:\AV\and\Pontiac\PI_1305402\Drawn\Sheets