

06-13-2025 LETTING ITEM 004

FOR INDEX OF SHEETS, SEE SHEET NO. 2

FOR INDEX OF HIGHWAY STANDARDS, SEE SHEET NO. 2

TRAFFIC DATA

NISH ROAD
MAJOR COLLECTOR
POSTED SPEED: 25-35 MPH
2021 ADT: 1,000

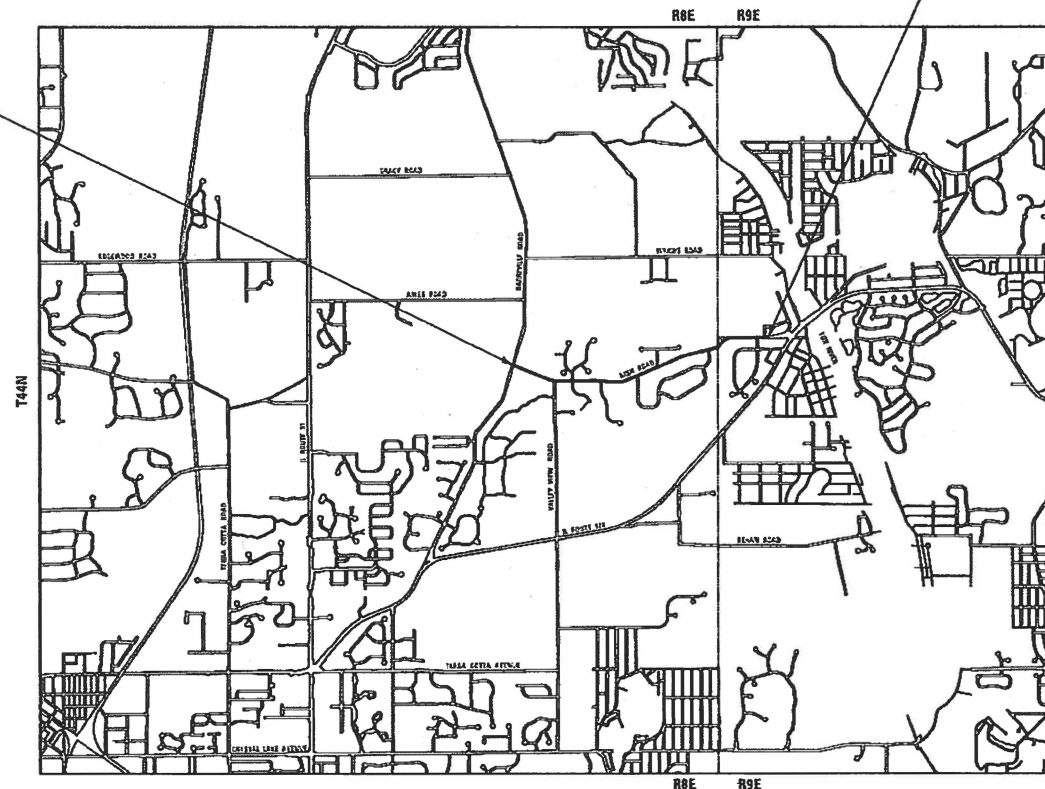
STATE OF ILLINOIS
DEPARTMENT OF TRANSPORTATION

**PLANS FOR PROPOSED
FEDERAL AID HIGHWAY**

MUN 0017/TR 177 (NISH ROAD)
FROM BARREVILLE ROAD TO IL ROUTE 176
RESURFACING
SECTION: 24-00012-00-RS
PROJECT: 06HH(261)
VILLAGE OF PRAIRIE GROVE
McHENRY COUNTY
C-91-143-25

NISH ROAD
IMPROVEMENT ENDS
STA. 96 + 20

NISH ROAD
IMPROVEMENT BEGINS
STA. 10 + 44

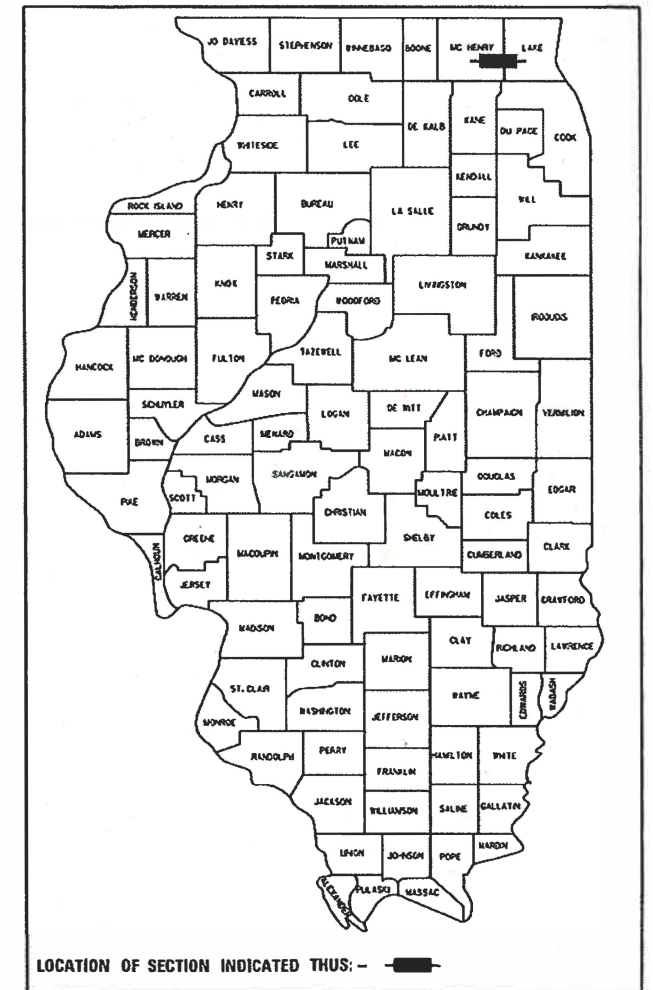


LOCATION MAP
NOT TO SCALE

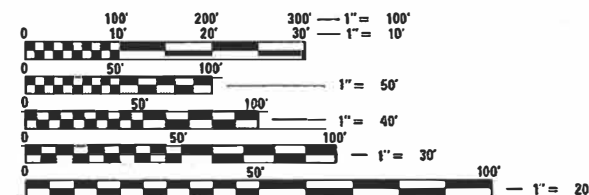
GROSS LENGTH = 8,576 FT. = 1.624 MILE
NET LENGTH = 8,576 FT. = 1.624 MILE

BAXTER & WOODMAN
Consulting Engineers

F.A. RTE.	SECTION	COUNTY	TOTAL SHEETS	SHEET NO.
0017	24-00012-00-RS	McHENRY	17	1
06HH(261)		ILLINOIS	CONTRACT NO. 61L51	



LOCATION OF SECTION INDICATED THUS: —



FULL SIZE PLANS HAVE BEEN PREPARED USING STANDARD ENGINEERING SCALES. REDUCED SIZED PLANS WILL NOT CONFORM TO STANDARD SCALES. IN MAKING MEASUREMENTS ON REDUCED PLANS, THE ABOVE SCALES MAY BE USED.

J.U.L.I.E. DESIGN STAGE REQUEST
DIG. No. X240731527

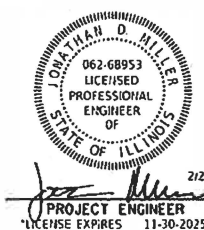


CONTACT JULIE AT 800-892-0123
WITH THE FOLLOWING:
COUNTY = McHENRY
CITY-TOWNSHIP = PRAIRIE GROVE
SEC. & 1/4 SEC. NO. = 23, 24, & 19
48 HOURS (2 working days) BEFORE YOU DIG

CONTRACT NO. 61L51


STATE OF ILLINOIS DEPARTMENT OF TRANSPORTATION DIVISION OF HIGHWAYS	
APPROVED <i>Josh S.</i>	2/26/25
VILLAGE OF PRAIRIE GROVE	
APPROVED <i>Mike A. Aquino</i>	2/26/25
HIGHWAY COMMISSIONER	
RUNDY TOWNSHIP	
PASSED <i>April 4, 2025</i>	
DISTRICT 1 ENGINEER OF LOCAL ROADS AND STREETS	
RELEASING FOR BID BASED ON LIMITED REVIEW	<i>April 4th, 2025</i>
REGIONAL ENGINEER	

PRINTED BY THE AUTHORITY
OF THE STATE OF ILLINOIS



STATE OF ILLINOIS - PROFESSIONAL DESIGN FIRM
LICENSE NO. - 184-001121 - EXPIRES 4/30/2026
J Miller 3/3/2025 9:24:42 AM
FILE NAME: P:\PRAGV\2326014-High Road Improvement\CAD\06_ORD_SHT-GenNotes.dgn

...\\DOT_PDF_Nolayers_BW.pltcfgr
...\\Prjs\2326014_Plansect.tu
P:\PRAGV\2326014-High Road Improvement\CAD\06_ORD_SHT-GenNotes.dgn

	USER NAME = j.miller	DESIGNED - JDM	REVISED -
		DRAWN - MVV	REVISED -
	PLOT SCALE = 20,000 ' / in.	CHECKED - JJF	REVISED -
	PLOT DATE = 3/3/2025	DATE -	FILE - 2326014_ORD_SHT-GenNotes.dgn

STATE OF ILLINOIS
DEPARTMENT OF TRANSPORTATION

INDEX OF SHEETS, HIGHWAY STANDARDS, AND GENERAL NOTES			
SCALE: N.T.S.	SHEET 1	OF 1 SHEETS	STA. TO STA.

F.A.U. RTE.	SECTION	COUNTY	TOTAL SHEETS	SHEET NO.
0017	24-00012-00-R5	McHENRY	17	2
		CONTRACT NO. 61L51		
		ILLINOIS	FED. AID PROJECT	06HH(261)

INDEX OF SHEETS

1	COVER
2	INDEX OF SHEETS, HIGHWAY STANDARDS, AND GENERAL NOTES
3 - 4	SUMMARY OF QUANTTTIES
5	TYPICAL SECTIONS AND HOT-MIX ASPHALT REQUIREMENTS
6 - 13	ROADWAY PLAN
14	BC-32 BUTT JOINT AND HMA TAPER DETAILS
15	TC-10 TRAFFIC CONTROL AND PROTECTION FOR SIDE ROADS, INTERSECTIONS, AND DRIVEWAYS
16	TC-13 DISTRICT ONE TYPICAL PAVEMENT MARKINGS
17	TC-22 ARTERIAL ROAD INFORMATION SIGN

GENERAL NOTES

1. ALL CONSTRUCTION SHALL BE DONE IN ACCORDANCE WITH THE DETAILS IN THE PLANS, THE SPECIAL PROVISIONS INCLUDED IN THE CONTRACT DOCUMENTS, AND THE FOLLOWING STATE OF ILLINOIS SPECIFICATIONS: “THE STANDARD SPECIFICATIONS FOR ROAD AND BRIDGE CONSTRUCTION” (REFERRED TO AS THE “STANDARD SPECIFICATIONS”), THE “SUPPLEMENTAL SPECIFICATIONS AND RECURRING SPECIAL PROVISIONS”, THE “MANUAL ON UNIFORM TRAFFIC CONTROL DEVICES FOR STREETS AND HIGHWAYS”, THE “MANUAL OF TEST PROCEDURES FOR MATERIALS” AND THE “STANDARD SPECIFICATIONS FOR WATER AND SEWER MAIN CONSTRUCTION IN ILLINOIS”.
2. UTILITY LOCATIONS HAVE NOT BEEN SHOWN ON THESE PLANS. THE CONTRACTOR SHALL BE RESPONSIBLE FOR THE PROTECTION OF ALL UNDERGROUND OR SURFACE UTILITIES, INCLUDING SPRINKLER SYSTEMS, EVEN THOUGH THEY MAY NOT BE SHOWN ON THE PLANS
3. ACCESS TO PRIVATE DRIVEWAYS SHALL BE PROVIDED AT ALL TIMES EXCEPT DURING ACTUAL CONSTRUCTION ADJACENT THERE TO.
4. IT WILL BE THE CONTRACTOR’S RESPONSIBILITY TO NOTIFY THE ENGINEER, RESIDENTS AND THE VILLAGE WHEN ACCESS TO DRIVEWAYS WILL BE TEMPORARILY CLOSED DUE TO DRIVEWAY REPLACEMENT. THE CONTRACTOR SHALL DISTRIBUTE NOTICES PROVIDED BY THE VILLAGE TO RESIDENTS AT LEAST 24 HOURS PRIOR TO PLANNED CLOSURE. EVERY EFFORT SHALL BE MADE TO ACCOMMODATE ACCESS TO THESE PROPERTIES INCLUDING KNOCKING ON DOORS WHEN DRIVEWAYS ARE ABOUT TO BE CLOSED.
5. THE DAYS PAVING OPERATION SHOULD RESULT IN A SINGLE TRANSVERSE JOINT. ANY COLD LONGITUDINAL JOINTS WILL NOT BE ACCEPTED. PROVIDING A SINGLE TRANSVERSE JOINT SHALL BE ACCOMPLISHED BY PAVING ONE LANE OF SUFFICIENT LENGTH THAT WILL ALLOW FOR THE PAVING OF THE ADJACENT LANE IN THE SAME DAY.
6. CONTRACTOR SHALL TAKE PRECAUTION BY PRESERVING EXISTING TREES WITHIN THE RIGHT OF WAY. IF ANY DAMAGE OCCURS, TREES SHALL BE REPLACED IN KIND PER ARTICLE 201.07 REPAIR OR REPLACEMENT OF EXISTING PLANT MATERIAL REQUIREMENTS STATED HEREIN.
7. THE PROPOSED EDGE OF PAVEMENT AND CENTERLINE SHALL MATCH EXISTING.
8. THE CONTRACTOR SHALL PROTECT ALL EXISTING DECORATIVE CONCRETE AND BRICK PAVERS TO REMAIN. ANY DAMAGE TO DECORATIVE CONCRETE OR BRICK PAVERS SHALL BE REPAIRED.
9. ALL STREETS SHALL BE OPEN TO TWO-WAY TRAFFIC AT THE END OF EACH DAY.
10. BEFORE BEGINNING ANY WORK, THE CONTRACTOR SHALL RETAIN AND RECORD FOR FUTURE REFERENCE, ALL EXISTING PAVEMENT MARKING LINES IN ORDER THAT THESE LOCATIONS CAN BE RE-ESTABLISHED FOR STRIPING. EXACT LOCATIONS OF ALL PAVEMENT MARKINGS SHALL BE SHOWN ON THE PLANS, PER DISTRICT 1 DETAILS, OR AS DIRECTED BY THE RESIDENT ENGINEER.

HIGHWAY STANDARDS

000001-08	STANDARD SYMBOLS, ABBREVIATIONS AND PATTERNS
442201-03	CLASS C AND D PATCHES
701006-05	OFF-RD OPERATIONS, 2L, 2W, 15' (4.5 m) TO 24" (600 mm) FROM PAVEMENT EDGE
701011-04	OFF-RD MOVING OPERATIONS, 2L, 2W, DAY ONLY
701301-04	LANE CLOSURE, 2L, 2W, SHORT TIME OPERATIONS
701311-03	LANE CLOSURE 2L, 2W MOVING OPERATIONS - DAY ONLY
701501-06	URBAN LANE CLOSURE, 2L, 2W, UNDIVIDED
701901-10	TRAFFIC CONTROL DEVICES
B.L.R. 24-2	MAILBOX TURNOUT FOR LOCAL ROADS

COMMITMENTS

NONE

STATE OF ILLINOIS - PROFESSIONAL DESIGN FIRM
LICENSE NO. - 184-001121 - EXPIRES 4/30/2026
jmillers
4/8/2025 9:47:42 AM
FILE NAME: P:\PRAGV\2326014-Nish Road Improvement\CAD\06_ORD\Sheets-ORD\2326014_ORD_SHT-SOQ.dgn
...\\DOT_PDF_NoLayers\BW.plt;cig
...\\Plots\2326014_Planset.tbl
P:\PRAGV\2326014-Nish Road Improvement

CODE NO.	ITEM	UNIT	TOTAL QUANTITY	CONSTRUCTION CODE	
				NISH ROAD VILLAGE OF PRAIRIE GROVE 80% FED 20% LOCAL	NISH ROAD NUNDA TOWNSHIP 80% FED 20% LOCAL
				ROADWAY 0005	ROADWAY 0005
				URBAN	URBAN
20201200	REMOVAL AND DISPOSAL OF UNSUITABLE MATERIAL	CU YD	202	158	44
21001000	GEOTECHNICAL FABRIC FOR GROUND STABILIZATION	SQ YD	605	473	132
21101615	TOPSOIL FURNISH AND PLACE, 4"	SQ YD	340	270	70
25000210	SEEDING, CLASS 2A	ACRE	0.25	0.125	0.125
25000400	NITROGEN FERTILIZER NUTRIENT	POUND	24	12	12
25000500	PHOSPHORUS FERTILIZER NUTRIENT	POUND	24	12	12
25000600	POTASSIUM FERTILIZER NUTRIENT	POUND	24	12	12
25100630	EROSION CONTROL BLANKET	SQ YD	340	270	70
25200200	SUPPLEMENTAL WATERING	UNIT	7	5	2
30300001	AGGREGATE SUBGRADE IMPROVEMENT	CU YD	202	158	44
40600290	BITUMINOUS MATERIALS (TACK COAT)	POUND	16,790	13,140	3,650
40600370	LONGITUDINAL JOINT SEALANT	FOOT	8,580	6,860	1,720
40600400	MIXTURE FOR CRACKS, JOINTS, AND FLANGEWAYS	TON	34	26	8
40600982	HOT-MIX ASPHALT SURFACE REMOVAL - BUTT JOINT	SQ YD	437	296	141
40603200	POLYMERIZED HOT-MIX ASPHALT BINDER COURSE, IL-4.75, N50	TON	1,045	818	227

* INDICATES SPECIALTY ITEM

CODE NO.	ITEM	UNIT	TOTAL QUANTITY	CONSTRUCTION CODE	
				NISH ROAD VILLAGE OF PRAIRIE GROVE 80% FED 20% LOCAL	NISH ROAD NUNDA TOWNSHIP 80% FED 20% LOCAL
				ROADWAY 0005	ROADWAY 0005
				URBAN	URBAN
40604060	HOT-MIX ASPHALT SURFACE COURSE, IL-9.5, MIX "D", N50	TON	2,089	1,635	454
42300200	PORTLAND CEMENT CONCRETE DRIVEWAY PAVEMENT, 6 INCH	SQ YD	70	70	
44000158	HOT-MIX ASPHALT SURFACE REMOVAL, 2 1/4"	SQ YD	24,860	19,460	5,400
44000200	DRIVEWAY PAVEMENT REMOVAL	SQ YD	416	290	126
44201717	CLASS D PATCHES, TYPE II, 6 INCH	SQ YD	473	370	103
44201721	CLASS D PATCHES, TYPE III, 6 INCH	SQ YD	672	526	146
44201723	CLASS D PATCHES, TYPE IV, 6 INCH	SQ YD	1,269	993	276
48102100	AGGREGATE WEDGE SHOULDER, TYPE B	TON	235	185	50
* 66900200	NON-SPECIAL WASTE DISPOSAL	CU YD	38	30	8
* 66900530	SOIL DISPOSAL ANALYSIS	EACH	2	1	1
* 66901001	REGULATED SUBSTANCES PRE-CONSTRUCTION PLAN	L SUM	1	0.78	0.22
* 66901003	REGULATED SUBSTANCES FINAL CONSTRUCTION REPORT	L SUM	1	0.78	0.22
* 66901006	REGULATED SUBSTANCES MONITORING	CAL DA	20	16	4
67100100	MOBILIZATION	L SUM	1	0.78	0.22
70102620	TRAFFIC CONTROL AND PROTECTION, STANDARD 701501	L SUM	1	0.78	0.22

* INDICATES SPECIALTY ITEM



USER NAME = jmillers	DESIGNED - JDM	REVISED -
PLOT SCALE = 20.000 ' / in	DRAWN - MVV	REVISED -
PLOT DATE = 4/8/2025	CHECKED - JJF	REVISED -
	DATE -	FILE - 2326014_ORD_SHT-SOQ.dgn

STATE OF ILLINOIS
DEPARTMENT OF TRANSPORTATION

SUMMARY OF QUANTITIES

SCALE N.T.S. SHEET 1 OF 2 SHEETS STA. TO STA.

F.A.U. RTE.	SECTION	COUNTY	TOTAL SHEETS	SHEET NO.
0017	24-00012-00-RS	McHENRY	17	3
CONTRACT NO. 61L51				
[ILLINOIS] FED. AID PROJECT 06HH(261)				

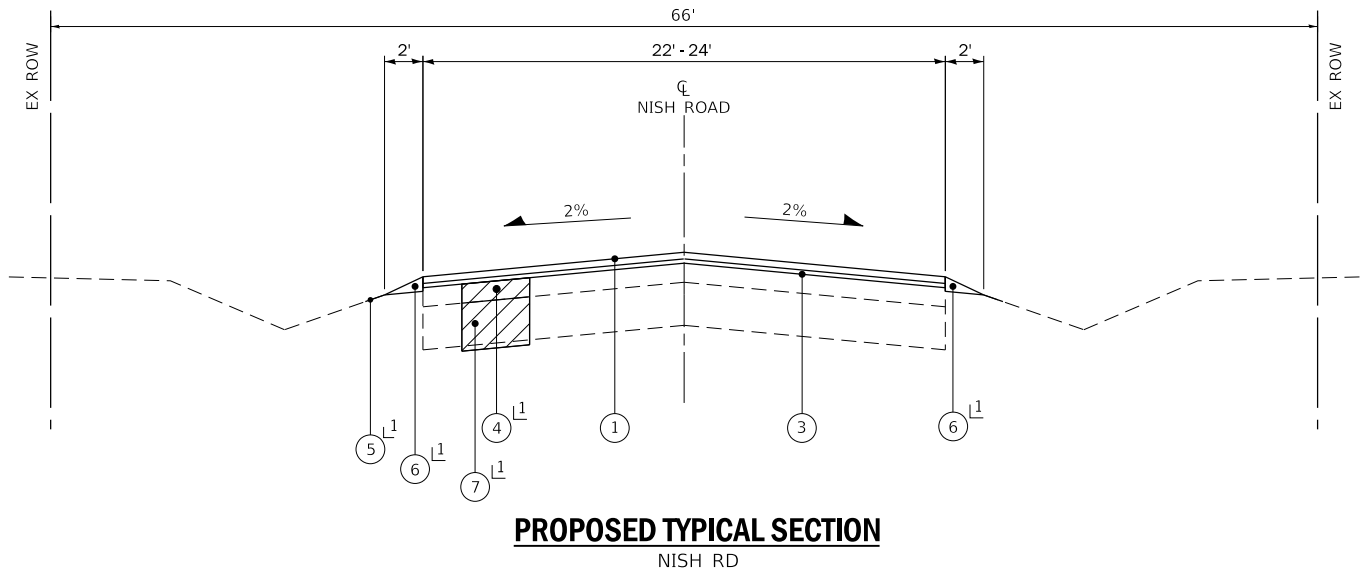
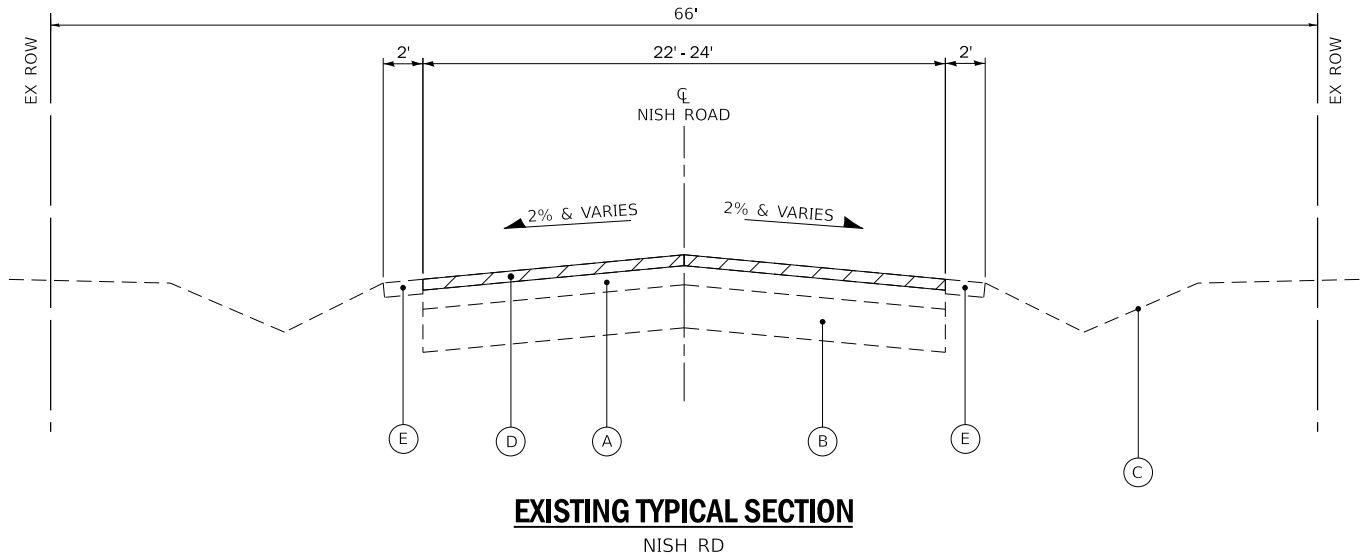
...\\DOT_PDF_NetLayers_BW.pltcf
...\\plots\\2326014_PlanSet.tbl
P:\\PRAGV\\2326014-Nish Road Im
Sheets-ORD\\2326014 ORD SHI-SOQ.dgn

INDICATES SPECIALTY ITEM

<div>FILE NAME:</div> <div><div><div><div>BAXTER & WOODMAN</div><div>Consulting Engineers</div></div></div></div>	USER NAME = jrmiller	DESIGNED - JDM	REVISED -	STATE OF ILLINOIS DEPARTMENT OF TRANSPORTATION	SUMMARY OF QUANTITIES					F.A.U. RTE.	SECTION	COUNTY	TOTAL SHEETS	SHEET NO.
	PLOT SCALE = 20.000' / in.	DRAWN - MVV	REVISED -							0017	24-00012-00-RS	McHENRY	17	4
	PLOT DATE = 3/3/2025	CHECKED - JJF	REVISED -		CONTRACT NO. 61L51									
	FILE - 2326014_ORD_SHT-SOQ.dgn	DATE -	FILE - 2326014_ORD_SHT-SOQ.dgn		SCALE: N.T.S.	SHEET 2	OF 2	SHEETS	STA.	TO STA.				

STATE OF ILLINOIS - PROFESSIONAL DESIGN FIRM
LICENSE NO. - 184-001121 - EXPIRES 4/30/2026
jtmiller
P:\PRAGV2326014-Nish Road Improvement\CAD\06_ORD\Sheets-ORD\2326014_ORD_SHT-TypSec.dgn
FILE NAME: P:\PRAGV2326014-Nish Road Improvement\CAD\06_ORD\Sheets-ORD\2326014_ORD_SHT-TypSec.dgn

...IDOT_PDF_Nolayers_BW.pltctg
...P\015\2326014_Plansect.tbl
P:\PRAGV2326014-Nish Road Improvement\CAD\06_ORD\Sheets-ORD\2326014_ORD_SHT-TypSec.dgn



1 AS DETERMINED BY ENGINEER

LONGITUDINAL JOINT SEALANT SHALL BE PLACED OVER THE POLYMERIZED HOT-MIX ASPHALT BINDER COURSE, IL-4.75, N50.

CONTRACTOR SHALL MILL BEFORE PATCHING.

NOTE:
GEOTECHNICAL FABRIC FOR GROUND STABILIZATION AND/OR AGGREGATE SUBGRADE IMPROVEMENT (CU YD) HAVE BEEN PROVIDED FOR USE AT THE LOCATIONS INDICATED FOR SOILS THAT TEND TO BE UNSTABLE AND/OR UNSUITABLE. THE ACTUAL NEED FOR REMOVAL AND REPLACEMENT WITH ABOVE ITEM WILL BE DETERMINED IN THE FIELD AT THE TIME OF CONSTRUCTION BY THE GEOTECHNICAL ENGINEER. ALL POTENTIALLY UNSTABLE SOILS SHOULD BE TESTED WITH A STATIC OR DYNAMIC CONE PENETROMETER AND TREATED IN ACCORDANCE WITH ARTICLE 301.04 OF THE STANDARD SPECIFICATIONS AND IDOT SUBGRADE STABILITY MANUAL. IF UNSTABLE AND/OR UNSUITABLE SOILS ARE NOT ENCOUNTERED, THEN THE QUANTITY SHALL BE DEDUCTED AND NO ADDITIONAL COMPENSATION WILL BE DUE TO THE CONTRACTOR.

ANY AGGREGATE SUBGRADE IMPROVEMENT CONTAMINATED AND/OR DAMAGED BY THE CONTRACTOR'S VEHICLES AND/OR EQUIPMENT IS TO BE REMOVED AND REPLACED AS DIRECTED BY THE ENGINEER AT CONTRACTOR EXPENSE.

EXISTING LEGEND

- (A) EXISTING HMA BINDER & SURFACE COURSE, 6" - 11.5"
- (B) EXISTING AGGREGATE BASE COURSE, 6.5" - 16.5"
- (C) GROUND SURFACE
- (D) HOT-MIX ASPHALT SURFACE REMOVAL, 2.25"
- (E) EXISTING AGGREGATE SHOULDER
- REMOVAL ITEM

PROPOSED LEGEND

- 1 HOT-MIX ASPHALT SURFACE COURSE, MIX "D", IL-9.5, N50 - 1.5"
- 2 NOT USED
- 3 POLYMERIZED HOT-MIX ASPHALT BINDER COURSE, IL-4.75, N50 - 0.75"
- 4 CLASS D PATCHES 6"
- 5 SEEDING, CLASS 2A TOPSOIL FURNISH AND PLACE, 4"
- 6 AGGREGATE WEDGE SHOULDER, TYPE B
- 7 AGGREGATE SUBGRADE IMPROVEMENT REMOVAL AND DISPOSAL OF UNSUITABLE MATERIAL

HOT-MIX ASPHALT MIXTURE REQUIREMENTS

MIXTURE TYPE	AIR VOIDS @ Ndes	QMP
PAVEMENT RESURFACING		
HOT-MIX ASPHALT SURFACE COURSE, IL-9.5, MIX "D", N50; 1.5"	4% @ 50 Gyr.	LR1030-2
POLYMERIZED HOT-MIX ASPHALT BINDER COURSE, IL-4.75, N50; 0.75"	3.5% @ 50 Gyr.	LR1030-2
HOT-MIX ASPHALT DRIVEWAY PAVEMENT, 3"		
HOT-MIX ASPHALT SURFACE COURSE, IL-9.5, MIX "D", N50; 3" (IN 2 LIFTS)	4% @ 50 Gyr.	LR1030-2
PATCHING		
CLASS D PATCHES (HMA BINDER IL-19.0mm); 6"	4% @ 70 Gyr.	LR1030-2
QMP designation: Quality Control/Quality Assurance (QC/QA) PER LR1030-2		

NOTES:

1. THE UNIT WEIGHT USED TO CALCULATE ALL HMA SURFACE MIXTURE QUANTITIES IS 112 LBS/SQ YD/IN.

2. THE "AC TYPE" FOR POLYMERIZED HMA MIXES SHALL BE "SBS/SBR PG 76 -22" AND FOR NON-POLYMERIZED HMA THE "AC TYPE" SHALL BE "PG 64 -22" UNLESS MODIFIED BY RECLAIMED MATERIALS SPECIFICATIONS.

BAXTER & WOODMAN
Consulting Engineers

USER NAME = jtmiller	DESIGNED - JDM	REVISED -
DRAWN - MVV	REVIS	ED -
PLOT SCALE = 20,000 ' / in.	CHECKED - JJF	REVISED -
PLOT DATE = 3/3/2025	DATE -	FILE - 2326014_ORD_SHT-TypSec.dgn

STATE OF ILLINOIS
DEPARTMENT OF TRANSPORTATION

TYPICAL SECTIONS AND HOT-MIX ASPHALT REQUIREMENTS

SCALE: N.T.S. SHEET 1 OF 1 SHEETS STA. TO STA.

F.A.U. RTE.	SECTION	COUNTY	TOTAL SHEETS	SHEET NO.
0017	24-00012-00-R5	McHENRY	17	5
CONTRACT NO. 61L51				
ILLINOIS FED. AID PROJECT 06HH(261)				

STATE OF ILLINOIS - PROFESSIONAL DESIGN FIRM
LICENSE NO. - 184-001121 - EXPIRES 4/30/2026
J Miller
PLOT SCALE = 20,000 ' / in.
PLOT DATE = 3/3/2025
FILE NAME: P:\PRAGV\2326014-Nish Road Improvement\CAD\06_ORD\Sheets-ORD\2326014_ORD_SHT-Plan1.dgn

...IDOT_PDF NoLayers_BW.pltctg

...P\015\2326014_Plansect.tbl

...

...

...

...

...

...

...

...

...

...

...

...

...

...

...

...

...

...

...

...

...

...

...

...

...

...

...

...

...

...

...

...

...

...

...

...

...

...

...

...

...

...

...

...

...

...

...

...

...

...

...

...

...

...

...

...

...

...

...

...

...

...

...

...

...

...

...

...

...

...

...

...

...

...

...

...

...

...

...

...

...

...

...

...

...

...

...

...

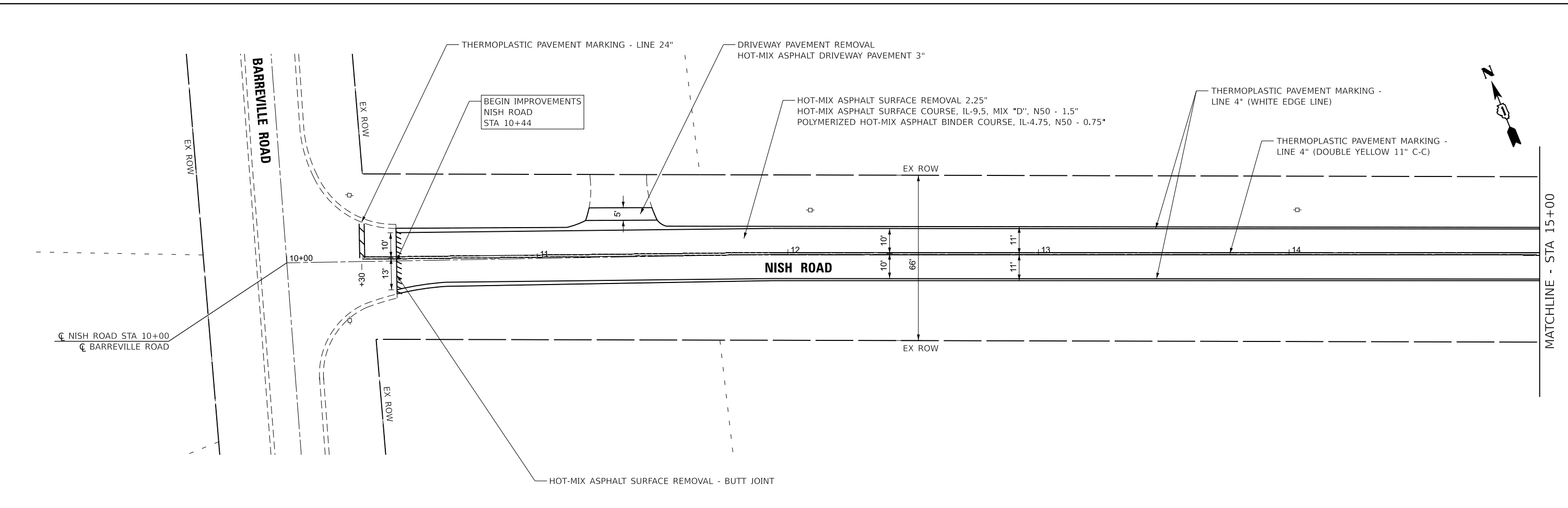
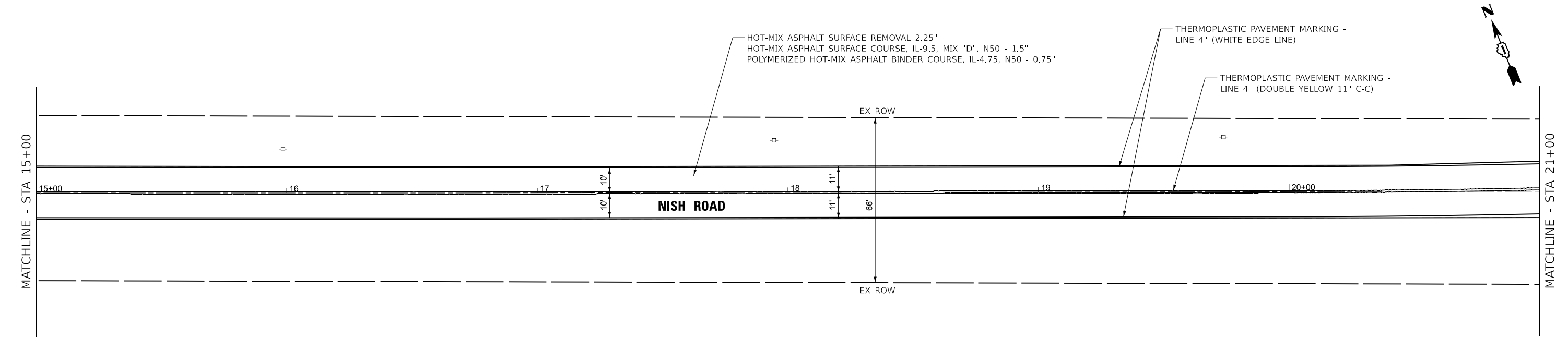
...

...

...

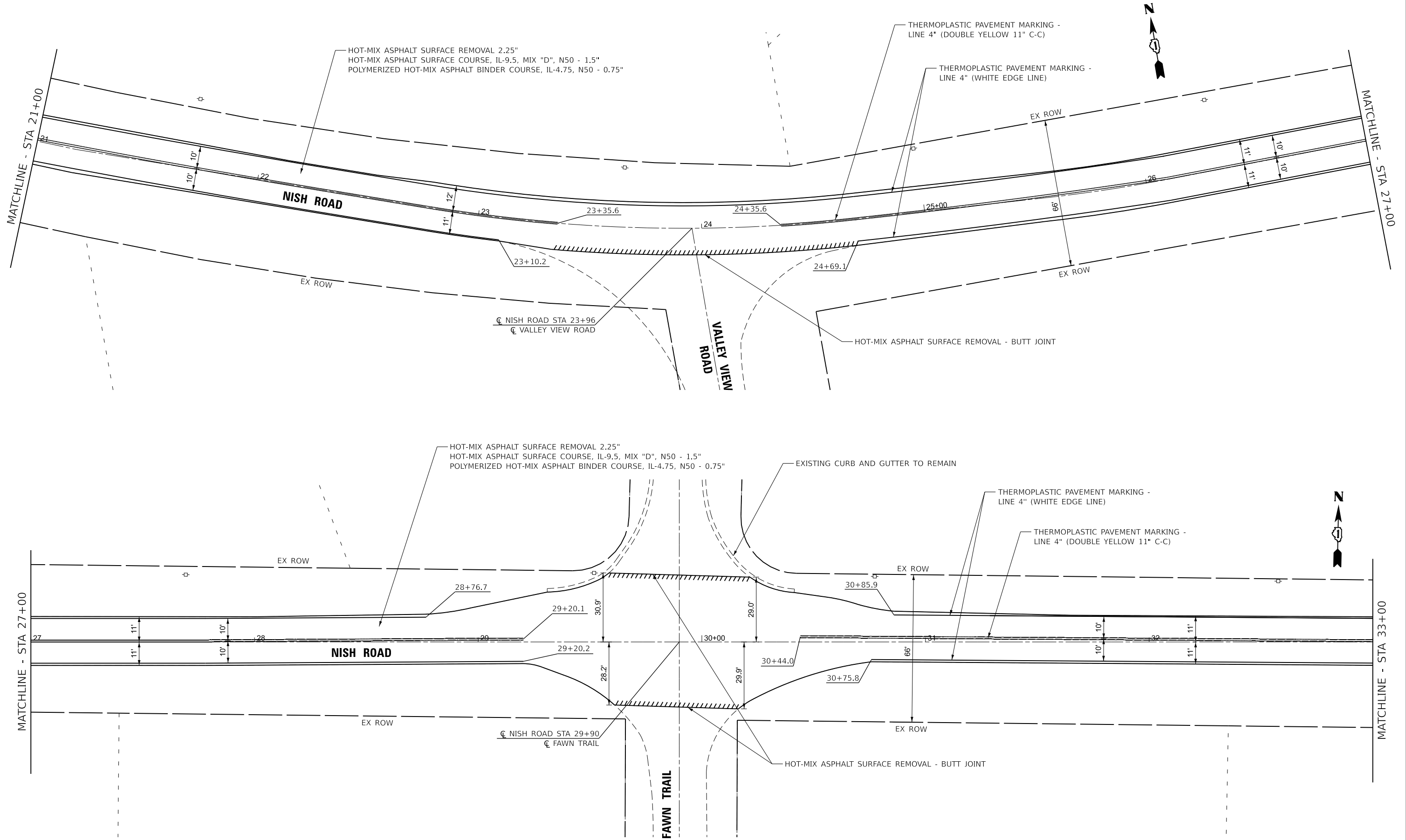
...

...



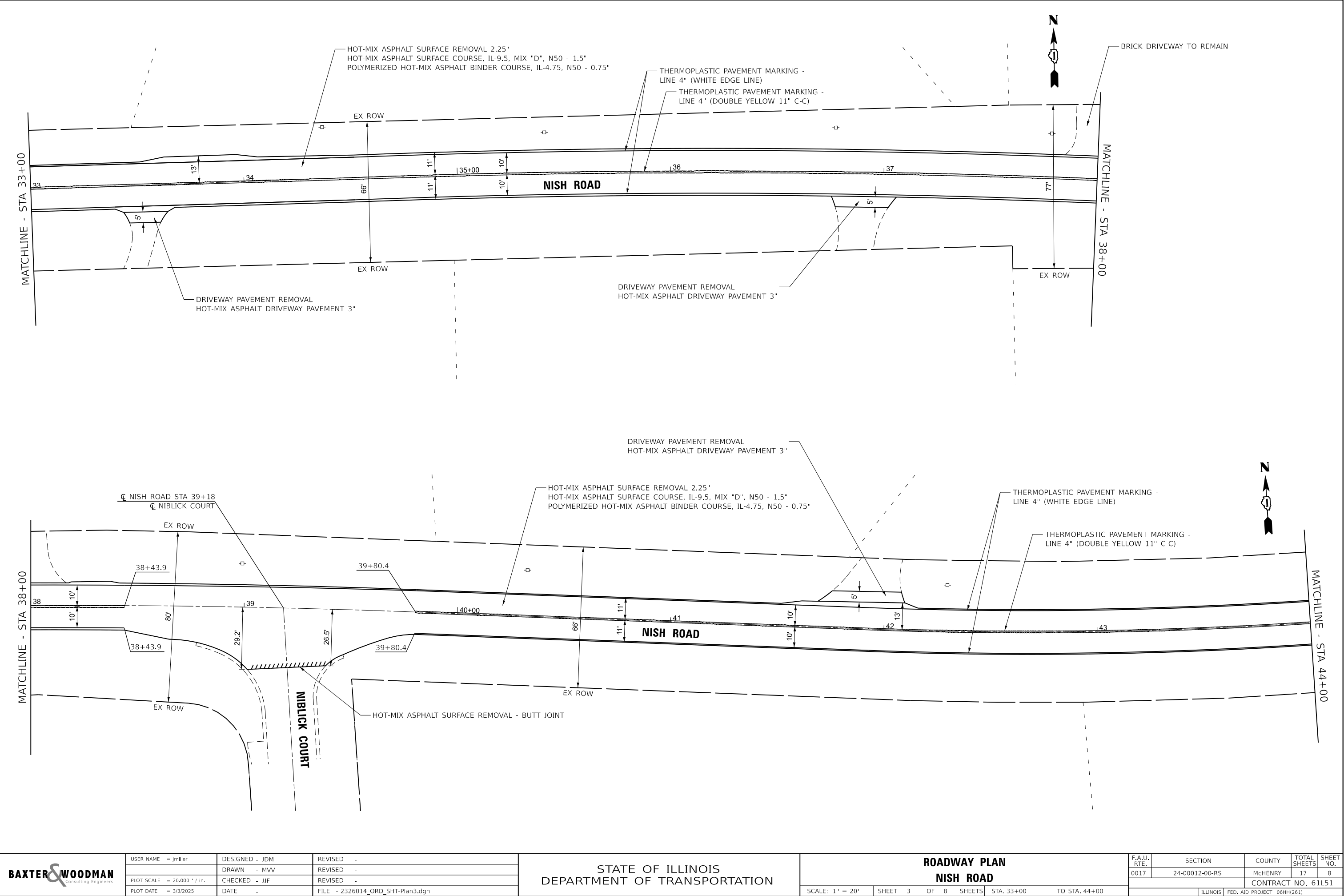
<div><div>BAXTER & WOODMAN</div><div>Consulting Engineers</div></div>	USER NAME = jmillier	DESIGNED - JDM	REVISED -	STATE OF ILLINOIS DEPARTMENT OF TRANSPORTATION	ROADWAY PLAN NISH ROAD			F.A.U. RTE.	SECTION	COUNTY	TOTAL SHEETS	SHEET NO.
	DRAWN - MVV	REVISIED -	REVISED -					0017	24-00012-00-R5	McHENRY	17	6
	PLOT SCALE = 20,000 ' / in.	CHECKED - JJF	REVISED -					CONTRACT NO. 61L51				
	PLOT DATE = 3/3/2025	DATE -	FILE - 2326014_ORD_SHT-Plan1.dgn		SCALE: 1" = 20'	SHEET 1	OF 8 SHEETS	STA. 10+44	TO STA. 21+00	ILLINOIS FED. AID PROJECT 06HH(261)		

STATE OF ILLINOIS - PROFESSIONAL DESIGN FIRM
LICENSE NO. - 184-001121 - EXPIRES 4/30/2026
J Miller
FILE NAME: P:\PRAGV\2326014-Nish Road Improvement\CAD\06_ORD\Sheets-ORD\2326014_ORD_SHT-Plan2.dgn
...\\DOT_PDF_Nolayers_BW.pltctg
...\\PRAGV\2326014_Plansect.dwg
P:\PRAGV\2326014-Nish Road Improvement\CAD\06_ORD\Sheets-ORD\2326014_ORD_SHT-Plan2.dgn



<div><div>BAXTER & WOODMAN</div><div>Consulting Engineers</div></div>	USER NAME = j.miller	DESIGNED - JDM	REVISED -	STATE OF ILLINOIS DEPARTMENT OF TRANSPORTATION		ROADWAY PLAN NISH ROAD		F.A.U. RTE.	SECTION	COUNTY	TOTAL SHEETS	SHEET NO.
		DRAWN - MVV	REVISED -					0017	24-00012-00-R5	McHENRY	17	7
	PLOT SCALE = 20.000 ' / in.	CHECKED - JJF	REVISED -					CONTRACT NO. 61L51				
	PLOT DATE = 3/3/2025	DATE -	FILE - 2326014_ORD_SHT-Plan2.dgn					ILLINOIS FED. AID PROJECT 06HH(261)				

STATE OF ILLINOIS - PROFESSIONAL DESIGN FIRM
LICENSE NO. - 184-001121 - EXPIRES 4/30/2026
J Miller
FILE NAME: P:\PRAG\2326014-Nish Road Improvement\CAD\06_ORD\Sheets-ORD\2326014_ORD_SHT-Plan3.dgn
...\\DOT_PDF_Nolayers_BW.pltctg
...\\PRAG\2326014_Plansect.tbl
P:\PRAG\2326014-Nish Road Improvement\CAD\06_ORD\Sheets-ORD\2326014_ORD_SHT-Plan3.dgn



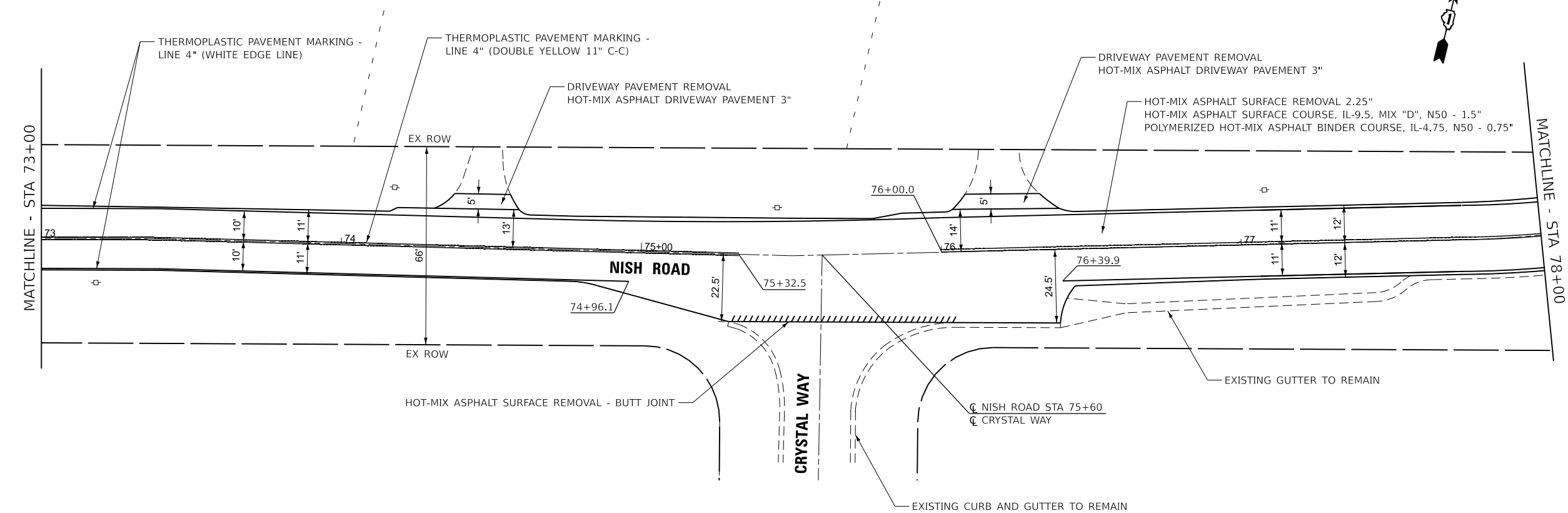
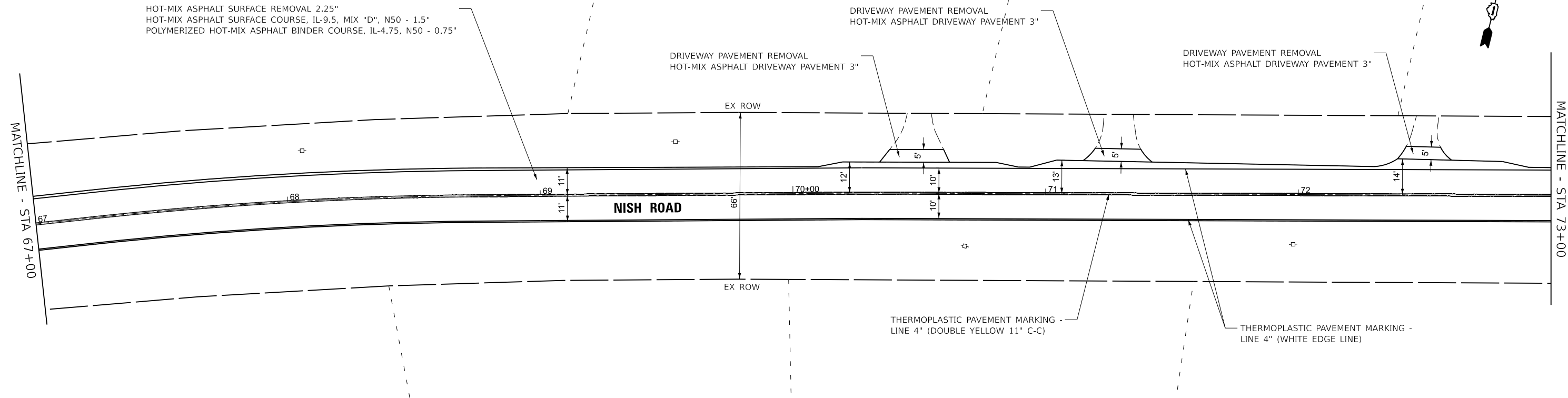
<div><div>BAXTER & WOODMAN</div><div>Consulting Engineers</div></div>	USER NAME = jmiller	DESIGNED - JDM	REVISED -	STATE OF ILLINOIS DEPARTMENT OF TRANSPORTATION	ROADWAY PLAN NISH ROAD				F.A.U. RTE.	SECTION	COUNTY	TOTAL SHEETS	SHEET NO.
		DRAWN - MVV	REVISED -						0017	24-00012-00-RS	MCHEPNRY	17	8
	PLOT SCALE = 20,000 ' / in.	CHECKED - JJF	REVISED -		CONTRACT NO. 61L51								
	PLOT DATE = 3/3/2025	DATE -	FILE - 2326014_ORD_SHT-Plan3.dgn		ILLINOIS FED. AID PROJECT 06HH(261)								
	SCALE: 1" = 20'		SHEET 3	OF 8 SHEETS	STA. 33+00	TO STA. 44+00							

STATE OF ILLINOIS - PROFESSIONAL DESIGN FIRM
LICENSE NO. - 184-001121 - EXPIRES 4/30/2026
J Miller
3/3/2025
FILE NAME: P:\PRAGV\2326014-Nish Road Improvement\CAD\06_ORD\Sheets-ORD\2326014_ORD_SHT-Plan6.dgn

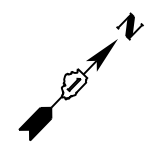
...IDOT_PDF NoLayers_BW.pltctg

...PRAGV\2326014_Plansect.tol

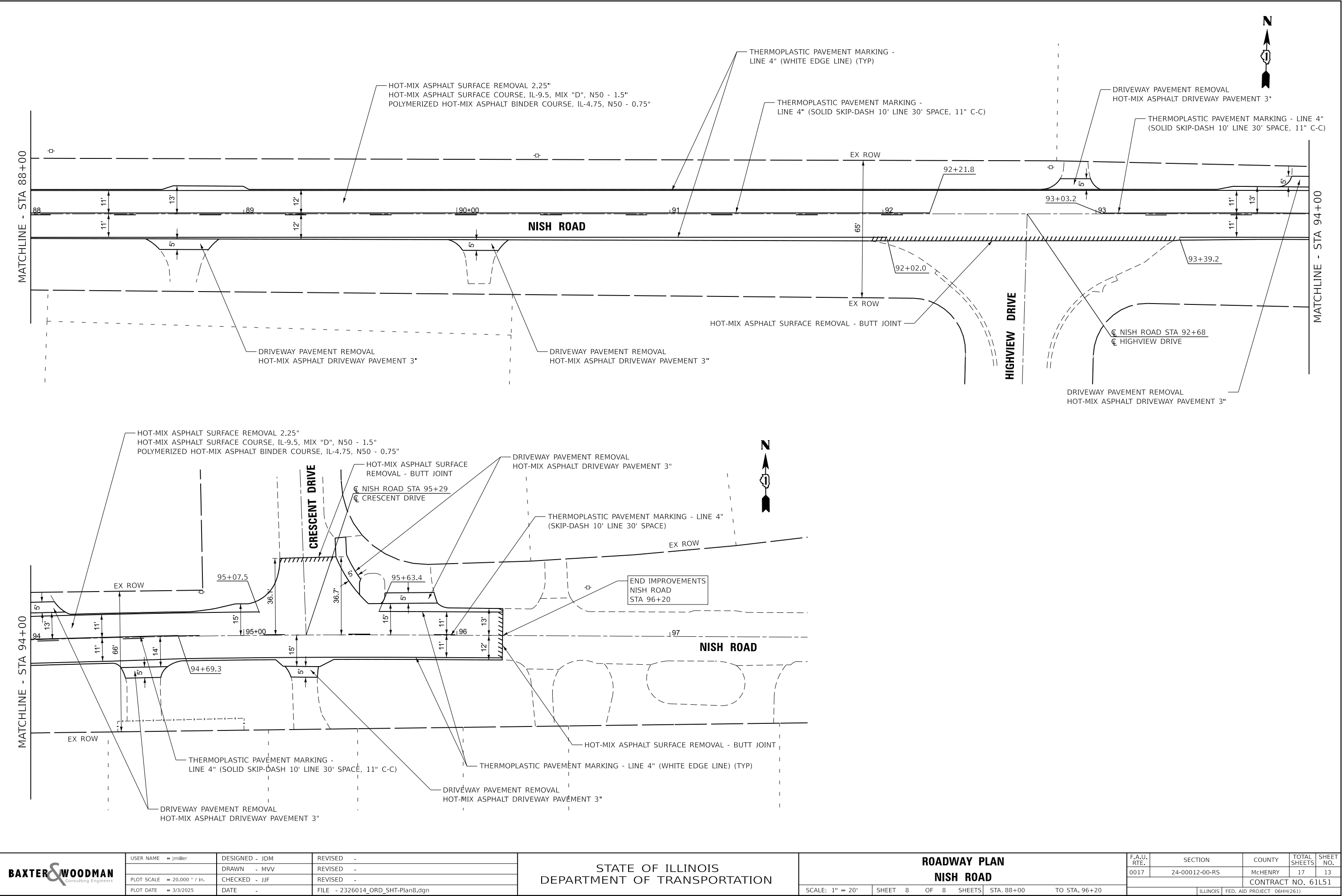
P:\PRAGV\2326014-Nish Road Improvement\CAD\06_ORD\Sheets-ORD\2326014_ORD_SHT-Plan6.dgn



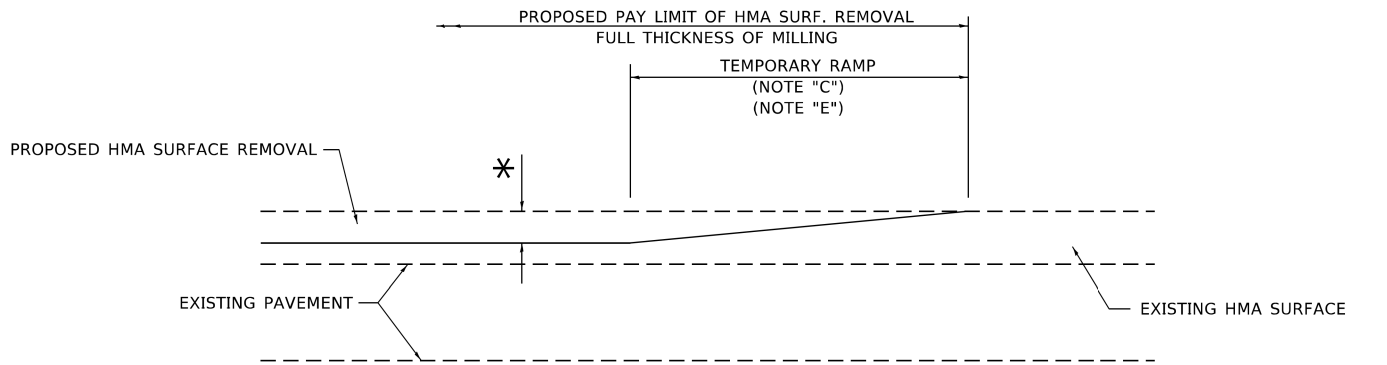
<div><div>BAXTER & WOODMAN</div><div>Consulting Engineers</div></div>	USER NAME = j.miller	DESIGNED - JDM	REVISED -	STATE OF ILLINOIS DEPARTMENT OF TRANSPORTATION		ROADWAY PLAN NISH ROAD		F.A.U. RTE.	SECTION	COUNTY	TOTAL SHEETS	SHEET NO.
	DRAWN - MVV	REVIS	REVISED -					0017	24-00012-00-R5	McHENRY	17	11
	PLOT SCALE = 20,000 ' / in.	CHECKED - JJF	REVISED -					CONTRACT NO. 61L51				
	PLOT DATE = 3/3/2025	DATE -	FILE - 2326014_ORD_SHT-Plan6.dgn					ILLINOIS FED. AID PROJECT 06HH(261)				
SCALE: 1" = 20'		SHEET 6	OF 8 SHEETS	STA. 67+00		TO STA. 78+00						



STATE OF ILLINOIS - PROFESSIONAL DESIGN FIRM
LICENSE NO. - 184-001121 - EXPIRES 4/30/2026
jrmiller
FILE NAME: P:\PRAGV\2326014-Nish Road Improvement\CAD\06_ORD\Sheets-ORD\2326014_ORD_SHT-Plan8.dgn
...\\DOT_PDF_Nolayers_BW.pltctg
...\\PRAGV\2326014_Plansect.tbl
P:\PRAGV\2326014-Nish Road Improvement\CAD\06_ORD\Sheets-ORD\2326014_ORD_SHT-Plan8.dgn

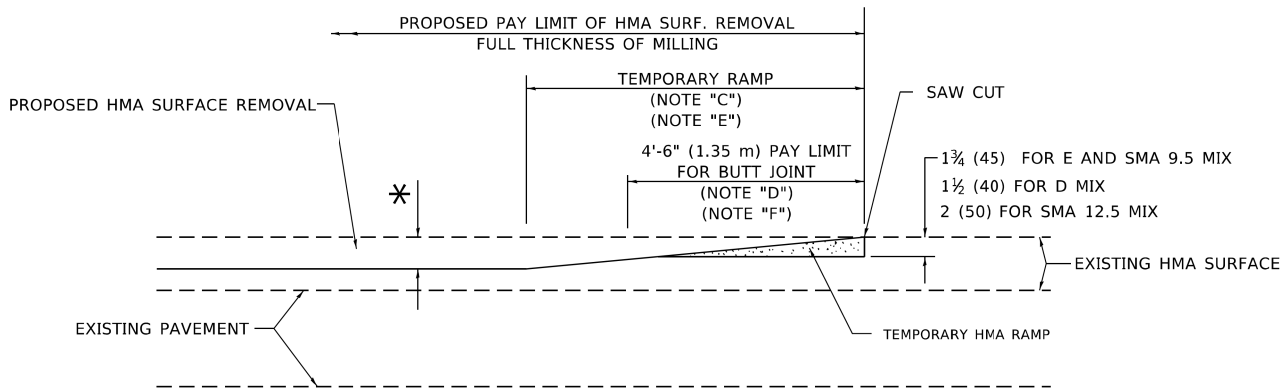


<div><div>BAXTERWOODMAN</div><div>Consulting Engineers</div></div>	USER NAME = jmiller	DESIGNED - JDM	REVISED -	STATE OF ILLINOIS DEPARTMENT OF TRANSPORTATION	ROADWAY PLAN NISH ROAD					F.A.U. RTE.	SECTION	COUNTY	TOTAL SHEETS	SHEET NO.
		DRAWN - MVV	REVISED -							0017	24-00012-00-RS	McHENRY	17	13
	PLOT SCALE = 20,000 ' / in.	CHECKED - JJF	REVISED -		CONTRACT NO. 61L51									
	PLOT DATE = 3/3/2025	DATE -	FILE - 2326014_ORD_SHT-Plan8.dgn		SCALE: 1" = 20' SHEET 8 OF 8 SHEETS STA. 88+00 TO STA. 96+20					ILLINOIS FED. AID PROJECT 06HH(261)				



MILLED TEMPORARY RAMP
(FOR BUTT JOINT AND HMA TAPER SEE DETAIL BELOW)

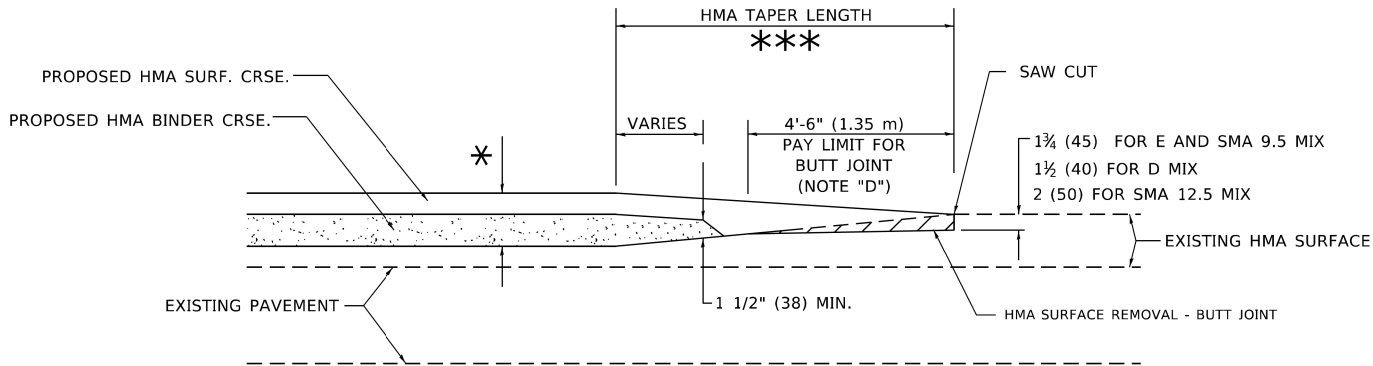
OPTION 1



HMA CONSTRUCTED TEMPORARY RAMP
(FOR BUTT JOINT AND HMA TAPER SEE DETAIL BELOW)

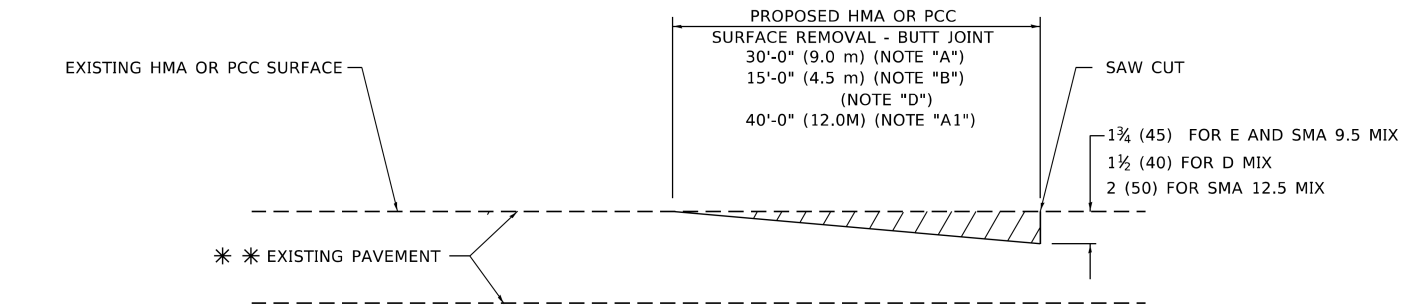
OPTION 2

TYPICAL TEMPORARY RAMP

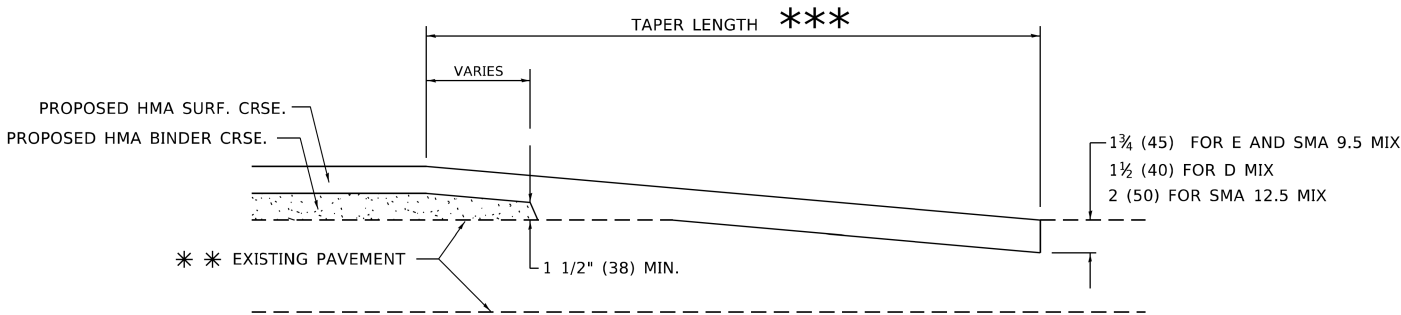


**BUTT JOINT AND
HMA TAPER**

**TYPICAL BUTT JOINT AND HMA TAPER
FOR MILLING AND RESURFACING**



BUTT JOINT DETAIL



HMA TAPER DETAIL

**TYPICAL BUTT JOINT AND HMA TAPER
FOR RESURFACING ONLY**

****** PC CONCRETE, HMA OR HMA RESURFACED PAVEMENT.

GENERAL NOTES

- A. MAINLINE ARTERIAL ROADWAYS AND MAJOR SIDE ROADS.
- A1. INTERSTATES
- B. MINOR SIDE ROADS.
- C. THE TEMP. RAMP SHALL BE CONSTRUCTED IMMEDIATELY UPON REMOVAL OF THE EXISTING HMA SURFACE.
- D. THE BUTT JOINT SHALL BE CONSTRUCTED IMMEDIATELY PRIOR TO PLACING THE PROPOSED HMA COURSES.
- E. TAPER THE TEMP. RAMP AT A RATE OF 3' - 4" (1.02m) PER 1 INCH (25 mm) OF MILLING THICKNESS.
***** SEE TYPICAL SECTIONS FOR MILLING THICKNESS.
- F. SEE ARTICLE 406.08 AND 406.14 OF THE STANDARD SPECIFICATIONS FOR "HMA AND/OR PCC SURFACE REMOVAL, BUTT JOINT".
******* 20'-0" (6.1 m) PER 1 (25) RESURFACING (NOTE "A")
10'-0" (3.0 m) PER 1 (25) RESURFACING (NOTE "B")

BASIS OF PAYMENT

- 1. THE BUTT JOINT WILL BE PAID FOR AT THE CONTRACT UNIT PRICE PER SQUARE YARD (SQUARE METER) FOR "HOT-MIX ASPHALT SURFACE REMOVAL - BUTT JOINT" OR FOR "PORTLAND CEMENT CONCRETE SURFACE REMOVAL- BUTT JOINT".
- 2. THE TEMPORARY RAMP AND SAW CUT SHALL BE INCLUDED IN THE UNIT COST FOR HMA OR PCC SURFACE REMOVAL-BUTT JOINT.

ALL DIMENSIONS ARE IN INCHES (MILLIMETERS) UNLESS OTHERWISE SHOWN.

MODEL: Default
FILE: \\miller-pw-bentley.com\\P\\DOT\\Documents\\DOT Office\\District 1\\Projects\\District 1\\Projects\\District 1\\CAD\\Drawings\\02.dgn

USER NAME = Lawrence.DeManche	DESIGNED - M. DE YONG	REVISED - A. ABBAS 03-21-97
	DRAWN -	REVISED - M. GOMEZ 04-06-01
PLOT SCALE = 100.0000' / in.	CHECKED -	REVISED - R. BORO 01-01-07
PLOT DATE = 11/18/2022	DATE - 06-13-90	REVISED - K. SMITH 11-18-22

STATE OF ILLINOIS
DEPARTMENT OF TRANSPORTATION

BUTT JOINT AND
HMA TAPER DETAILS

SCALE: NONE SHEET 1 OF 1 SHEETS STA. TO STA.

F.A. RTE.	SECTION	COUNTY	TOTAL SHEETS	SHEET NO.
0017	24-00012-00-R5	McHENRY	17	14
BD400-05 BD-32		CONTRACT NO. 61L51		
ILLINOIS		FED. AID PROJECT 06HH(261)		

MODEL Default
FILE Name: p:\w\llet-aw.bentley.com\PNIDOT\Documents\DOT Offices\District 1\Projects\Dis42723a\CADD\Data\CAD\Sheet\c10.dgn

USER NAME = Lawrence,DeManche	DESIGNED - L.H.A.	REVISED - T. RAMMACHER 01-06-00
	DRAWN -	REVISED - A. SCHUETZE 07-01-13
PLOT SCALE = 100.0000' / in.	CHECKED -	REVISED - A. SCHUETZE 09-15-16
PLOT DATE = 5/3/2024	DATE - 06-89	REVISED - D. SENDERAK 05-03-24

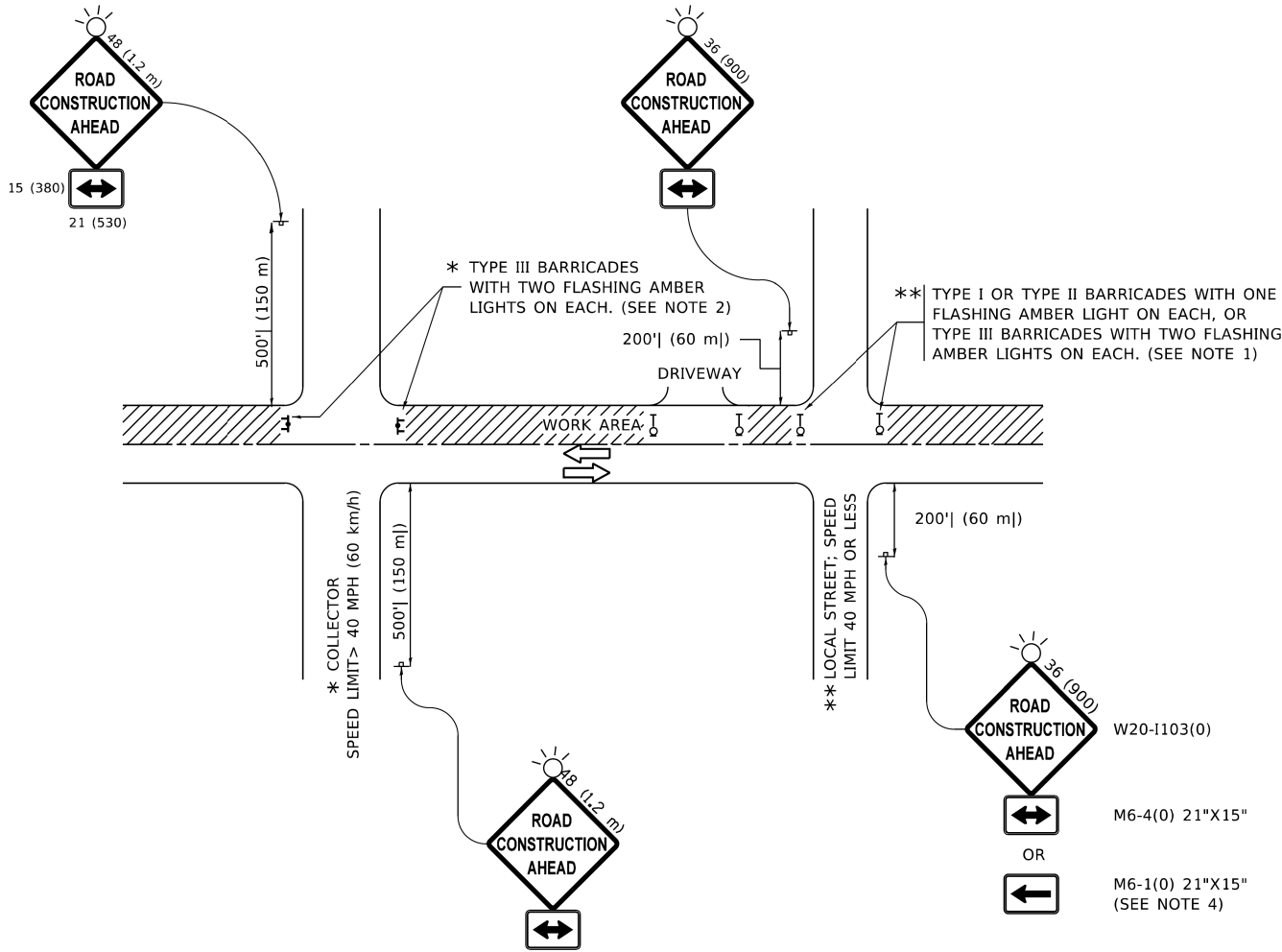
STATE OF ILLINOIS
DEPARTMENT OF TRANSPORTATION

TRAFFIC CONTROL AND PROTECTION FOR
SIDE ROADS, INTERSECTIONS, AND DRIVEWAYS

SCALE: NONE SHEET 1 OF 1 SHEETS STA. TO STA.

All dimensions are in inches (millimeters)
unless otherwise shown.

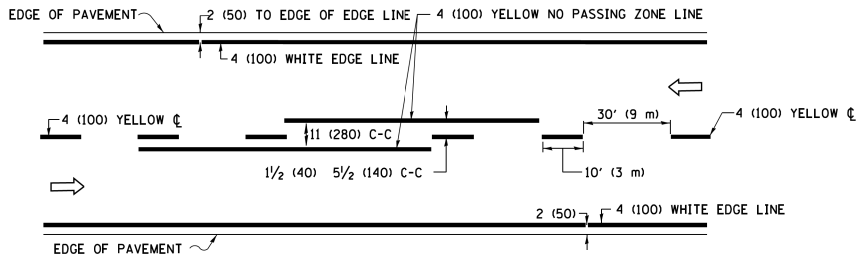
F.A. RTE.	SECTION	COUNTY	TOTAL SHEETS	SHEET NO.
0017	24-00012-00-R5	McHENRY	17	15
TC-10		CONTRACT NO. 61L51		
ILLINOIS		FED. AID PROJECT 06HH(261)		



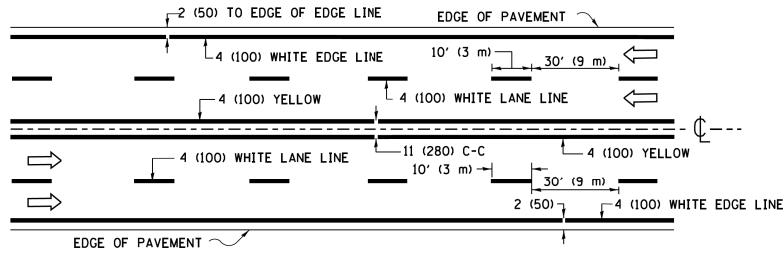
NOTES:

- SIDE ROAD WITH A SPEED LIMIT OF 40 MPH (60 km/h) OR LESS AS SHOWN ON THE DRAWING AND AS DIRECTED BY THE ENGINEER:
 - ONE "ROAD CONSTRUCTION AHEAD" SIGN 36 x 36 (900x900) WITH A FLASHER MOUNTED ON IT APPROXIMATELY 200' (60 m) IN ADVANCE OF THE MAIN ROUTE.
 - THE CLOSED PORTION OF THE MAIN ROUTE SHALL BE PROTECTED BY BLOCKING WITH TYPE I, TYPE II OR TYPE III BARRICADES, 1/3 OF THE CROSS SECTION OF THE CLOSED PORTION.
- SIDE ROAD WITH A SPEED LIMIT GREATER THAN 40 MPH (60 km/h) AS SHOWN ON THE DRAWING AND AS DIRECTED BY THE ENGINEER:
 - ONE "ROAD CONSTRUCTION AHEAD" SIGN 48 x 48 (1.2 m x 1.2 m) WITH A FLASHER MOUNTED ON IT APPROXIMATELY 500' (150 m) IN ADVANCE OF THE MAIN ROUTE.
 - THE CLOSED PORTION OF THE MAIN ROUTE SHALL BE PROTECTED BY BLOCKING WITH TYPE III BARRICADES, 1/2 OF THE CROSS SECTION OF THE CLOSED PORTION.
- CONES MAY BE SUBSTITUTED FOR BARRICADES OR DRUMS AT HALF THE SPACING DURING DAY OPERATIONS. CONES SHALL BE A MINIMUM OF 28 (710) IN HEIGHT.
- WHEN THE SIDE ROAD LIES BETWEEN THE BEGINNING OF THE MAINLINE
- SIGNING AND THE WORK ZONE, A SINGLE HEADED ARROW (M6-1) SHALL BE USED IN LIEU OF THE DOUBLE HEADED ARROW (M6-4).
- WHEN WORK IS BEING PERFORMED ON A SIDE ROAD OR DRIVEWAY, FOLLOW THE APPLICABLE STANDARD(S). THE DIRECTIONAL ARROW (M6-1 OR M6-4) SHALL BE COVERED OR REMOVED WHEN NO LONGER CONSISTENT WITH THE TRAFFIC CONTROL SET-UP.
- ADVANCE WARNING SIGNS ARE TO BE OMITTED ON DRIVEWAYS UNLESS OTHERWISE SPECIFIED IN THE PLANS OR BY THE ENGINEER.
- THE TRAFFIC CONTROL AND PROTECTION FOR SIDE ROADS, INTERSECTIONS, AND DRIVEWAYS SHALL BE INCLUDED IN THE COST OF SPECIFIED TRAFFIC CONTROL STANDARDS OR ITEMS.

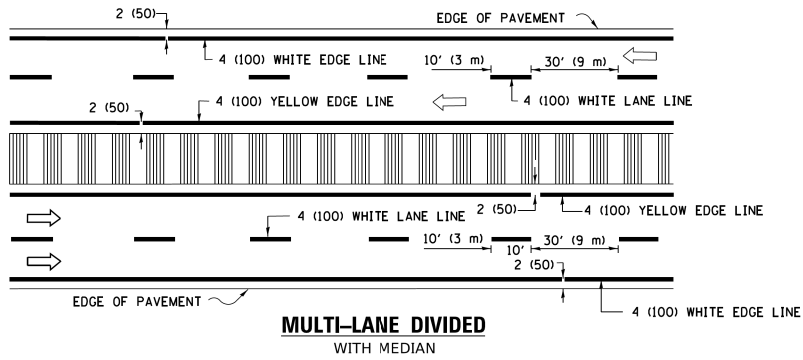
MODEL Default
FILE Name: pav01084EBIDNITEG Illinois.gov-PWDOT\Documents\DOT_Offices\District_1\Projects\DUHS422234\CADData\CADsheets\tc13.dgn
k13.dgn 3/4/2019 10:34:37 AM User:footeam



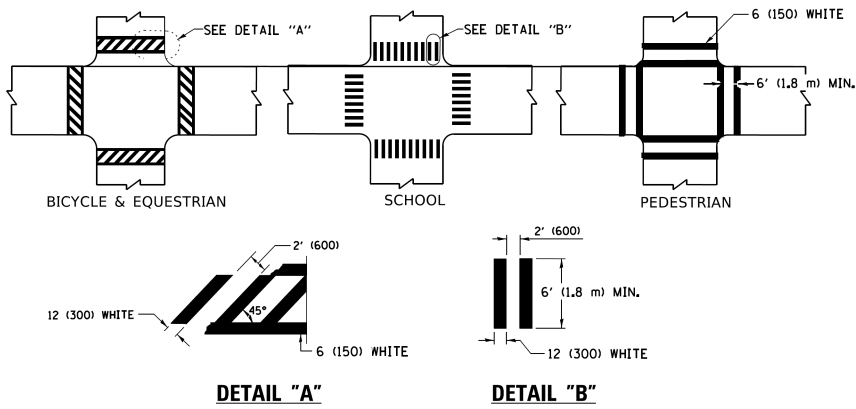
2-LANE ROADWAY



MULTI-LANE UNDIVIDED

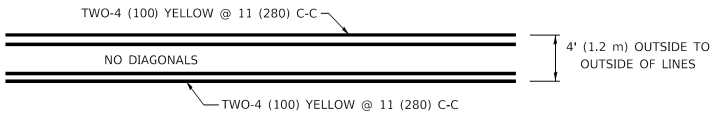


TYPICAL LANE AND EDGE LINE MARKING

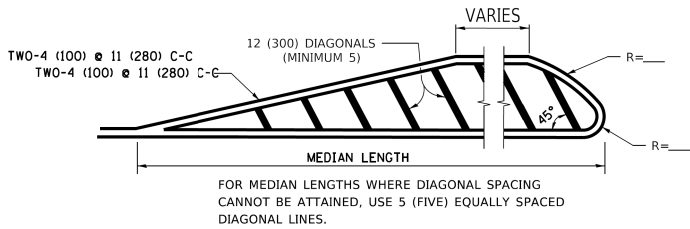


TYPICAL CROSSWALK MARKING

* MARKINGS SHALL BE INSTALLED PARALLEL TO THE CENTERLINE OF THE ROAD WHICH IT CROSSES

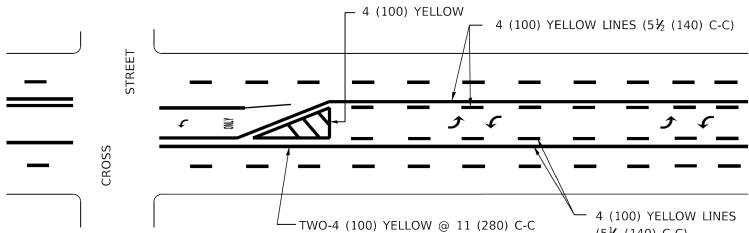


4' (1.2 m) WIDE MEDIANS ONLY

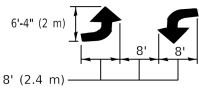


DIAGONAL LINE SPACING: 50' (15 m) C-C (LESS THAN 30MPH (50 km/h))
75' (25 m) C-C 30MPH (50 km/h) TO 45MPH (70 km/h))
150' (45 m) C-C (MORE THAN 45MPH (70 km/h))

MEDIANS OVER 4' (1.2 m) WIDE

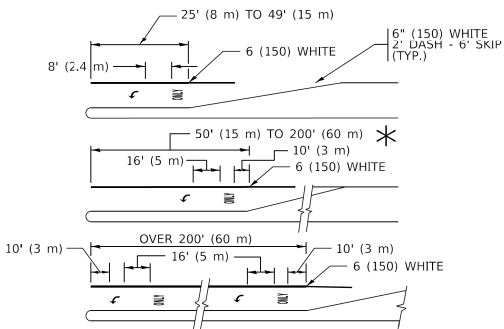


A MINIMUM OF TWO PAIRS OF TURN ARROWS SHALL BE USED, WHITE IN COLOR. ADDITIONAL PAIRS SHALL BE PLACED AT 200' (60 m) TO 300' (90 m) INTERVALS.



MEDIAN WITH TWO-WAY LEFT TURN LANE

TYPICAL PAINTED MEDIAN MARKING

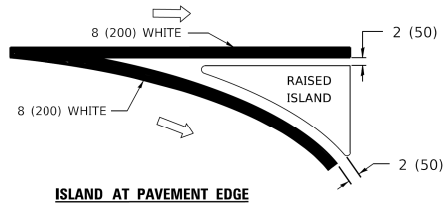
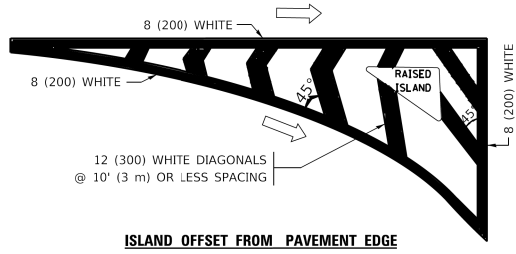


FULL SIZE LETTERS 8" (2.4 m) AND ARROWS SHALL BE USED.
AREA = 15.6 SQ. FT. (1.5 m²) ONLY AREA = 20.8 SQ. FT. (1.9 m²)

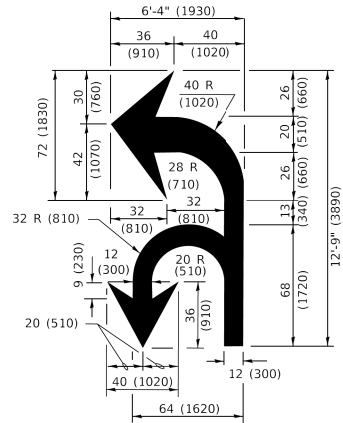
* TURN LANES IN EXCESS OF 400' (120 m) IN LENGTH MAY HAVE AN ADDITIONAL SET OF ARROW - "ONLY" INSTALLED MIDWAY BETWEEN THE OTHER TWO SETS OF ARROW - "ONLY".

TYPICAL LEFT (OR RIGHT) TURN LANE

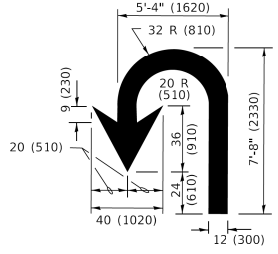
TYPICAL TURN LANE MARKING



TYPICAL ISLAND MARKING



COMBINATION LEFT AND U-TURN



LANE REDUCTION TRANSITION

* LANE REDUCTION ARROWS REQUIRED AT SPEEDS OF 45 MPH OR GREATER OR WHEN SPECIFIED IN PLANS.

D(FT)	SPEED LIMIT
345	30
425	35
500	40
580	45
665	50
750	55

TYPE OF MARKING	WIDTH OF LINE	PATTERN	COLOR	SPACING / REMARKS
CENTERLINE ON 2 LANE PAVEMENT	4 (100)	SKIP-DASH	YELLOW	10' (3 m) LINE WITH 30' (9 m) SPACE
CENTERLINE ON MULTI-LANE UNDIVIDED PAVEMENT	2 @ 4 (100)	SOLID	YELLOW	11 (280) C-C
NO PASSING ZONE LINES: FOR ONE DIRECTION FOR BOTH DIRECTIONS	4 (100) 2 @ 4 (100)	SOLID SOLID	YELLOW/ YELLOW	5 1/2 (140) C-C FROM SKIP-DASH CENTERLINE 11 (280) C-C OMIT SKIP-DASH CENTERLINE BETWEEN
LANE LINES	4 (100) 5 (125) ON FREEWAYS	SKIP-DASH SKIP-DASH	WHITE WHITE	10' (3 m) LINE WITH 30' (9 m) SPACE
DOTTED LINES (EXTENSIONS OF CENTER, LANE OR TURN LANE MARKINGS)	SAME AS LINE BEING EXTENDED	SKIP-DASH	SAME AS LINE BEING EXTENDED	2' (600) LINE WITH 6' (1.8 m) SPACE
EDGE LINES	4 (100)	SOLID	YELLOW-LEFT WHITE-RIGHT	OUTLINE MEDIANS IN YELLOW
TURN LANE MARKINGS	6 (150) LINE; FULL SIZE LETTERS & SYMBOLS (8' (2.4m))	SOLID	WHITE	SEE TYPICAL TURN LANE MARKING DETAIL
TWO WAY LEFT TURN MARKING	2 @ 4 (100) EACH DIRECTION 8' (2.4m) LEFT ARROW	SKIP-DASH AND SOLID IN PAIRS	YELLOW WHITE	10' (3 m) LINE WITH 30' (9 m) SPACE FOR SKIP-DASH; 5 1/2 (140) C-C BETWEEN SOLID LINE AND SKIP-DASH LINE SEE TYPICAL TWO-WAY LEFT TURN MARKING DETAIL
CROSSWALK LINES (PEDESTRIAN) A. DIAGONALS (BIKE & EQUESTRIAN) B. LONGITUDINAL BARS (SCHOOL)	2 @ 6 (150) 12 (300) @ 45° 12 (300) @ 90°	SOLID SOLID SOLID	WHITE WHITE WHITE	NOT LESS THAN 6' (1.8 m) APART 2' (600) APART 2' (600) APART SEE TYPICAL CROSSWALK MARKING DETAILS.
STOP LINES	24 (600)	SOLID	WHITE	PLACE 4' (1.2 m) IN ADVANCE OF AND PARALLEL TO CROSSWALK, IF PRESENT. OTHERWISE, PLACE AT DESIRED STOPPING POINT. PARALLEL TO CROSSROAD CENTERLINE, WHERE POSSIBLE.
PAINTED MEDIANS	2 @ 4 (100) WITH 12 (300) DIAGONALS @ 45° NO DIAGONALS USED FOR 4' (1.2 m) WIDE MEDIANS	SOLID	YELLOW: TWO WAY TRAFFIC WHITE: ONE WAY TRAFFIC	11 (280) C-C FOR THE DOUBLE LINE SEE TYPICAL PAINTED MEDIAN MARKING.
GORE MARKING AND CHANNELIZING LINES	8 (200) WITH 12 (300) DIAGONALS @ 45°	SOLID	WHITE	DIAGONALS: 15' (4.5 m) C-C (LESS THAN 30MPH (50 km/h)) 20' (6 m) C-C 30MPH (50 km/h) TO 45MPH (70 km/h)) 30' (9 m) C-C (OVER 45MPH (70 km/h))
RAILROAD CROSSING	24 (600) TRANSVERSE LINES: "RR" 15 6' (1.8 m) LETTERS; 16 (400) LINE FOR "X"	SOLID	WHITE	SEE STATE STANDARD 780001 AREA OF: "R"=3.6 SQ. FT. (0.33 m ²) EACH "X"=54.0 SQ. FT. (5.0 m ²)
SHOULDER DIAGONALS (REQUIRED FOR SHOULDERS ≥ 8')	12 (300) @ 45°	SOLID	WHITE - RIGHT YELLOW - LEFT	50' (15 m) C-C (LESS THAN 30MPH (50 km/h)) 75' (25 m) C-C (30 MPH (50 km/h) TO 45MPH (70 km/h)) 150' (45 m) C-C (OVER 45MPH (70 km/h))
U TURN ARROW	SEE DETAIL	SOLID	WHITE	16.3 SF
2 ARROW COMBINATION LEFT AND U TURN	SEE DETAIL	SOLID	WHITE	30.4 SF

FOR FURTHER DETAILS ON PAVEMENT MARKING REFER TO STANDARD SPECIFICATIONS FOR ROAD AND BRIDGE CONSTRUCTION AND STATE STANDARD 780001.

All dimensions are in inches (millimeters) unless otherwise shown.

USER NAME = footeam]	DESIGNED - EVERS	REVISED - C. JUCIUS 09-09-09
	DRAWN -	REVISED - C. JUCIUS 07-01-13
PLOT SCALE = 50.0000" / in.	CHECKED -	REVISED - C. JUCIUS 12-21-15
PLOT DATE = 3/4/2019	DATE - 03-19-90	REVISED - C. JUCIUS 04-12-16

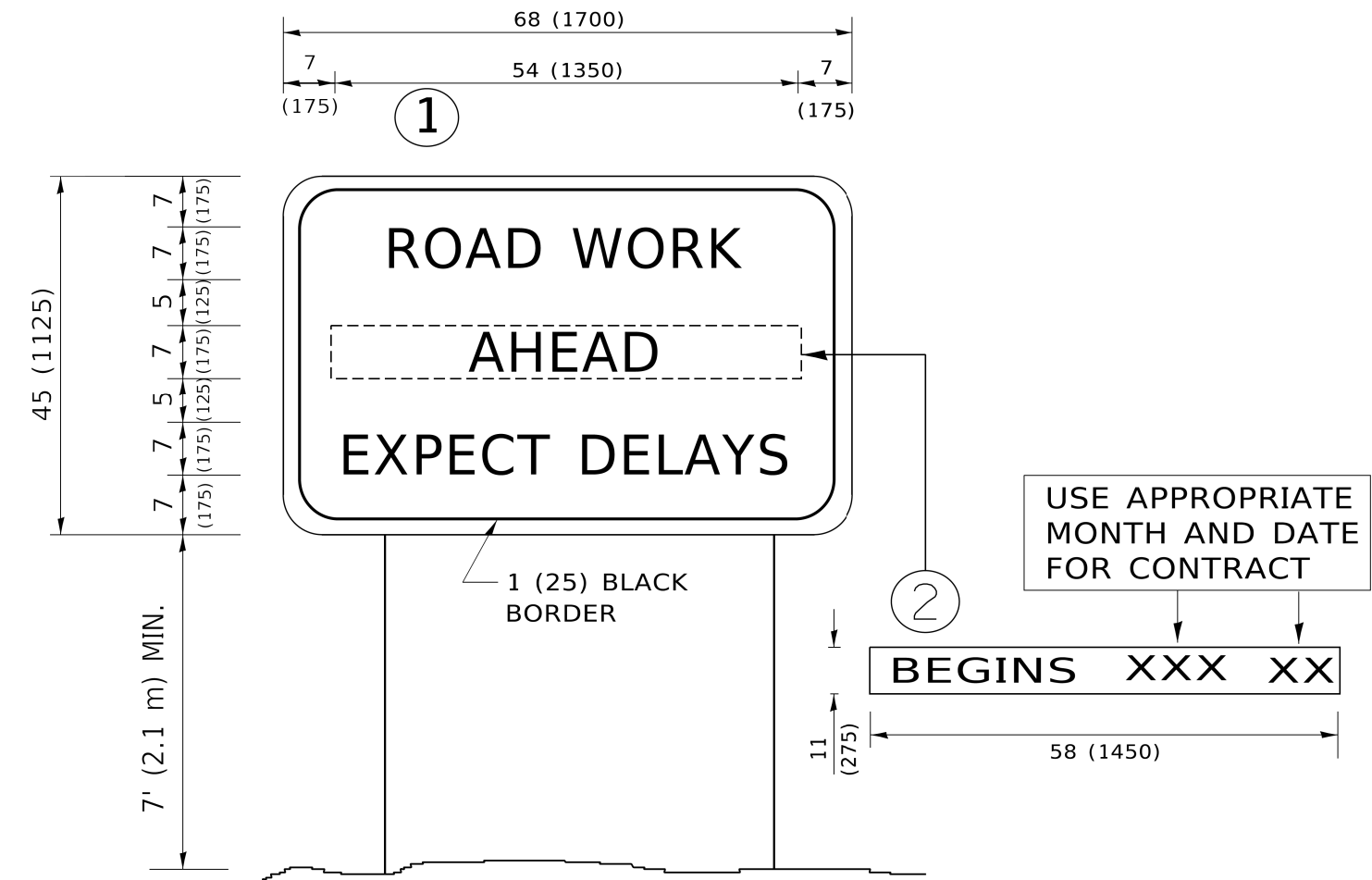
STATE OF ILLINOIS
DEPARTMENT OF TRANSPORTATION

DISTRICT ONE
TYPICAL PAVEMENT MARKINGS

SCALE: NONE SHEET 1 OF 2 SHEETS STA. TO STA.

F.A. RTE.	SECTION	COUNTY	TOTAL SHEETS	SHEET NO.
0017	24-00012-00-R5	McHENRY	17	16
TC-13		CONTRACT NO. 61L51		
		ILLINOIS	FED. AID PROJECT	06H(261)

MODEL Default
FILE Name: p:\u0084EBIDNTEG\Illinois.gov-PWD\DOT\Documents\DOT_Offices\District_1\Projects\DU15422\24\CAD\Bata\CAD\sheetstc22.dgn



NOTES:

1. USE BLACK LETTERING ON ORANGE BACKGROUND.
2. ERECT SIGNS IN ADVANCE OF THE LOCATION FOR THE "ROAD CONSTRUCTION AHEAD" SIGN AT LOCATIONS AS DIRECTED BY THE ENGINEER.
3. ERECT SIGN①WITH INSTALLED PANEL②ONE WEEK PRIOR TO THE START OF CONSTRUCTION.
4. REMOVE PANEL②SOON AFTER THE START OF CONSTRUCTION.
5. SEE SPECIAL PROVISION FOR "TEMPORARY INFORMATION SIGNING" FOR ADDITIONAL INFORMATION.
6. ONE SIGN ASSEMBLY EQUALS 25.70 SQ. FT. (2.3 SQ. M.)
7. SHALL BE PAID FOR AS TEMPORARY INFORMATION SIGNING.

ALL DIMENSIONS ARE IN INCHES (MILLIMETERS)
UNLESS OTHERWISE SHOWN.

	USER NAME = footemj	DESIGNED -	REVISED - R. MIRS 09-15-97	STATE OF ILLINOIS DEPARTMENT OF TRANSPORTATION	ARTERIAL ROAD INFORMATION SIGN				F.A. RTE.	SECTION	COUNTY	TOTAL SHEETS	SHEET NO.
		DRAWN -	REVISED - R. MIRS 12-11-97						0017	24-00012-00-R5	McHENRY	17	17
	PLOT SCALE = 50.0000 ' / in.	CHECKED -	REVISED -T. RAMMACHER 02-02-99		TC-22		CONTRACT NO. 61L51						
	PLOT DATE = 3/4/2019	DATE -	REVISED - C. JUCIUS 01-31-07		ILLINOIS FED. AID PROJECT 06HH(261)								
					SCALE: NONE	SHEET 1	OF 1 SHEETS	STA.	TO STA.				