

06-13-2025 LETTING ITEM 006

FOR INDEX OF SHEETS, SEE SHEET NO. 2

FOR INDEX OF HIGHWAY STANDARDS, SEE SHEET NO. 2

PROJECT IS LOCATED IN THE VILLAGE OF GLENVIEW.

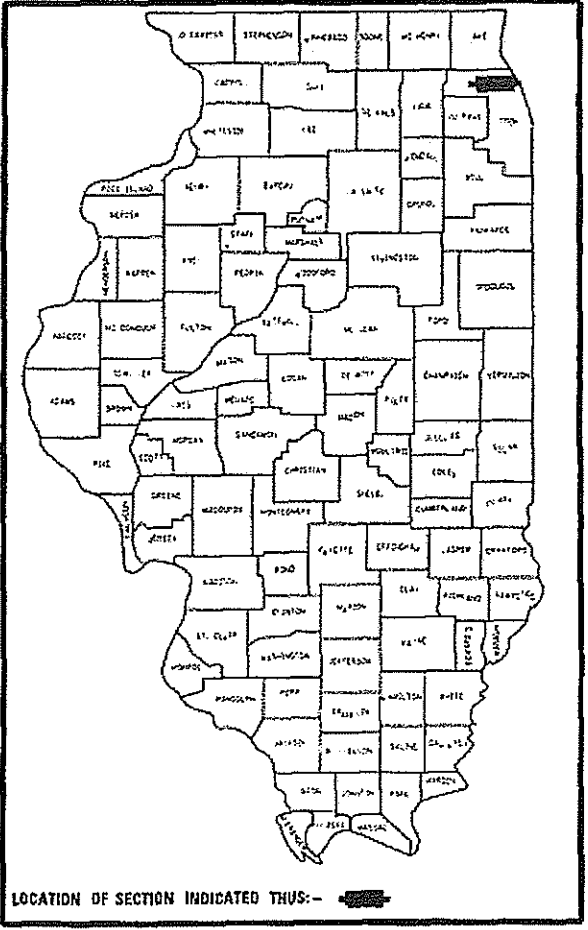
TRAFFIC DATA

GLENVIEW ROAD
POSTED AND DESIGN SPEED LIMIT = 35 MPH
ADT = 10,300 (2022)
ROADWAY CLASSIFICATION: MINOR ARTERIAL

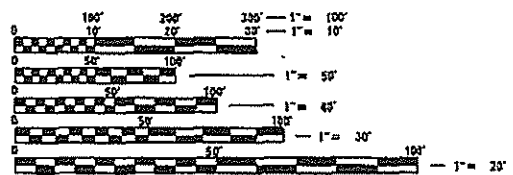
STATE OF ILLINOIS
DEPARTMENT OF TRANSPORTATION
**PLANS FOR PROPOSED
FEDERAL AID HIGHWAY**

F.A.U. 1297 (GLENVIEW RD)
MILWAUKEE AVENUE TO SHERMER ROAD
ROADWAY RESURFACING
SECTION: 24-00213-00-RS
PROJECT: RS2J(351)
VILLAGE OF GLENVIEW
COOK COUNTY C-91-141-25
LOCATION MAP

F.A.U. RTE.	SECTION	COUNTY	TOTAL SHEETS	SHEET NO.
1297	24-00213-00-RS	COOK	42	1
ILLINOIS			CONTRACT NO. 61L53	



LOCATION OF SECTION INDICATED THUS: -



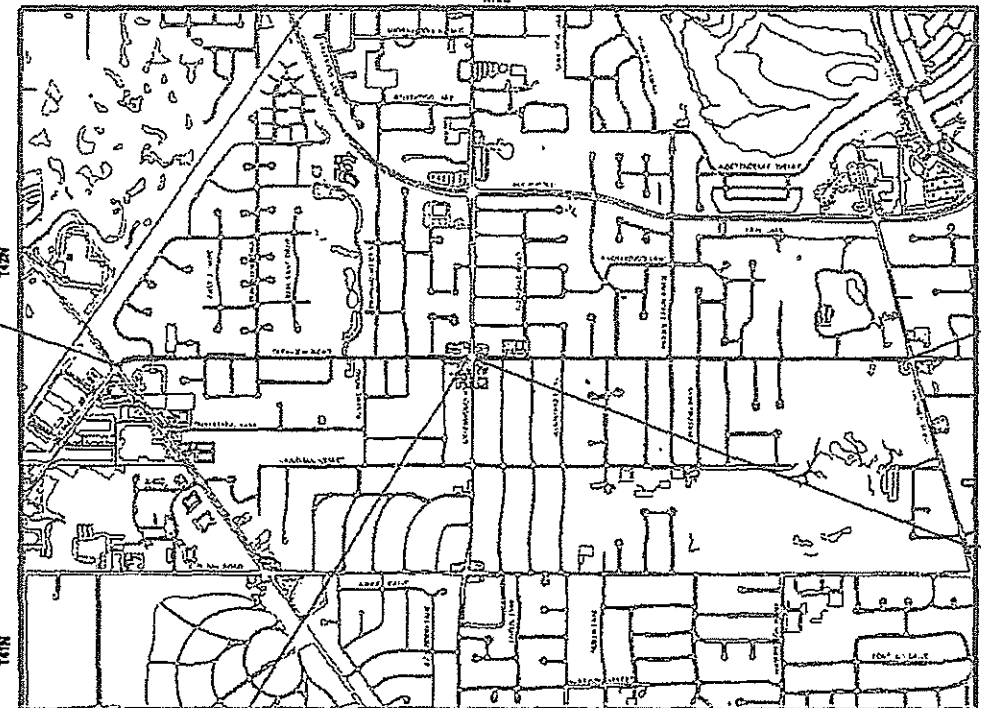
FULL SIZE PLANS HAVE BEEN PREPARED USING STANDARD ENGINEERING SCALES. REDUCED SIZED PLANS WILL NOT CONFORM TO STANDARD SCALES. IN MAKING MEASUREMENTS ON REDUCED PLANS, THE ABOVE SCALES MAY BE USED.
JULIE, DESIGN STAGE REQUEST
DIG. NO. X231040415



CONTACT JULIE AT 811 OR 800-892-0123 WITH THE FOLLOWING:
COUNTY = COOK
CITY-TOWNSHIP = Glenview
SEC. & 1/4 SEC. NO. = 12.34
48 HOURS (2 working days) BEFORE YOU DIG

PROJECT ENGINEER: SULLY HYDER
PROJECT MANAGER: JONATHAN TRENT, PE
CONTRACT NO. 61L53

BEGIN PROJECT OMISSION
STA. 53 + 30.00



PROJECT ENDS
STA. 108 + 18.05

END PROJECT OMISSION
STA. 55 + 50.95

SECTIONS 12, 31, AND 34, T42N, R12E OF THE THIRD PRINCIPAL MERIDIAN
GROSS LENGTH = 9,740.05 FT. = 1.844 MILE
PROJECT OMISSION = 220.95 = .042 MILE
NET LENGTH = 9,519.10 FT. = 1.816 MILE

BAXTER & WOODMAN
Consulting Engineers



SIGNED: 11/01/2024
PROJECT MANAGER
JONATHAN TRENT

STATE OF ILLINOIS
DEPARTMENT OF TRANSPORTATION
APPROVED: *[Signature]*
VILLAGE OF GLENVIEW
DEPUTY DIRECTOR OF PUBLIC WORKS
PASSED: *[Signature]*
DISTRICT 1 ENGINEER OF
LOCAL ROADS AND STREETS
RELEASING FOR BID
BASED ON LIMITED
REVIEW: *[Signature]*
REGIONAL ENGINEER

PRINTED BY THE AUTHORITY
OF THE STATE OF ILLINOIS
B&W PROJECT NO.: 220009.23 DATE: 03-03-2025

STATE OF ILLINOIS - PROFESSIONAL DESIGN FIRM
LICENSE NO. - 184-001121 - EXPIRES 4/30/2025
shyder 03-03-2025 11:41:03 AM \$FILE\$
MODEL Default
FILE Name: P:\CADD\220009-23_GenNotes.dgn

GENERAL NOTES

1. ALL CONSTRUCTION SHALL BE DONE IN ACCORDANCE WITH THE DETAILS IN THE PLANS, THE SPECIAL PROVISIONS INCLUDED IN THE CONTRACT DOCUMENTS, THE JANUARY 1, 2022 EDITION OF THE "THE STANDARD SPECIFICATIONS FOR ROAD AND BRIDGE CONSTRUCTION" (REFERRED TO AS THE "STANDARD SPECIFICATIONS"), THE JANUARY 1, 2025 EDITION OF THE "SUPPLEMENTAL SPECIFICATIONS AND RECURRING SPECIAL PROVISIONS", THE NOVEMBER 2021 REVISION OF THE "ILLINOIS SUPPLEMENT TO THE MANUAL ON UNIFORM TRAFFIC CONTROL DEVICES FOR STREETS AND HIGHWAYS", THE DECEMBER 1, 2022 EDITION OF THE "MANUAL OF TEST PROCEDURES FOR MATERIALS", AND THE 8TH EDITION OF THE "STANDARD SPECIFICATIONS FOR WATER AND SEWER MAIN CONSTRUCTION IN ILLINOIS".

2. THE LOCATIONS OF UTILITIES SHOWN ON THE PLANS REPRESENTS ONLY THE OPINION OF THE VILLAGE AND IS ONLY INCLUDED FOR THE CONVENIENCE OF THE BIDDER AND THE ACCURACY IS NOT GUARANTEED. THE CONTRACTOR SHALL BE RESPONSIBLE FOR THE PROTECTION OF ALL UNDERGROUND OR SURFACE UTILITIES, INCLUDING SPRINKLER SYSTEMS, EVEN THOUGH THEY MAY NOT BE SHOWN ON THE PLANS.

3. THE CONTRACTOR SHALL NOTIFY THE VILLAGE PUBLIC WORKS ADMINISTRATOR AT LEAST 48 HOURS IN ADVANCE OF BEGINNING WORK TO OBTAIN VILLAGE UTILITY LOCATIONS.

4. PER THE VILLAGE'S ORDINANCE (2023-5879), THE CONTRACTOR SHALL BE REQUIRED TO CONFINE THE WORK ACTIVITY BETWEEN 7:00 AM-7:00 PM MONDAY THROUGH FRIDAY, 9:00 AM-5:00 PM SATURDAYS. WORK ON SATURDAYS SHALL BE COORDINATED AND APPROVED IN WRITING BY THE ENGINEER AT LEAST 48 HOURS IN ADVANCE. NO WORK WILL BE PERMITTED ON SUNDAYS OR HOLIDAYS WITHOUT THE ENGINEER'S WRITTEN APPROVAL. WORK ACTIVITY, AS INTENDED HEREIN, INCLUDES WARMING/STARTING UP/IDLING OF ANY MACHINERY OR ENGINES.

5. THE CONTRACTOR SHALL SUBMIT PARTIAL WAIVERS OF LIEN FROM ALL SUBCONTRACTORS AND SUPPLIERS WITH EACH PARTIAL PAYMENT ESTIMATE AND CONTRACTOR'S AFFIDAVIT FOR SUBCONTRACTORS AND SUPPLIERS WITH SECOND PAYMENT REQUEST FOR THE PREVIOUS PAYMENT ESTIMATES AND THEN WITH ALL SUBSEQUENT PAYMENT ESTIMATES.

6. THE ENGINEER WILL FURNISH A RESIDENT ENGINEER (RE) TO ASSIST THE ENGINEER IN PROVIDING JOB-SITE OBSERVATION OF THE CONTRACTOR'S WORK. THE RE WILL PROVIDE BASE LINES, BENCHMARKS AND REFERENCE POINTS, ASSIST THE CONTRACTOR WITH INTERPRETATION OF THE PLANS AND SPECIFICATIONS, OBSERVE IN GENERAL IF THE CONTRACTOR'S WORK IS IN CONFORMITY WITH THE CONTRACT DOCUMENTS, AND MONITOR THE CONTRACTOR'S PROGRESS AS RELATED TO THE DATE OF COMPLETION. THE LIMITATIONS ON AUTHORITY AND RESPONSIBILITY OF THE ENGINEER SHALL ALSO APPLY TO THE ENGINEER'S CONSULTANTS, RESIDENT ENGINEER AND ASSISTANTS.

7. ACCESS TO PRIVATE DRIVEWAYS SHALL BE PROVIDED AT ALL TIMES EXCEPT DURING ACTUAL CONSTRUCTION ADJACENT THERE TO. AGGREGATE SURFACE COURSE FOR TEMPORARY ACCESS SHALL BE USED AS NEEDED, UTILIZING CRUSHED STONE OR CRUSHED GRAVEL. CONTRACTOR SHALL ALSO PROVIDE AGGREGATE SURFACE COURSE FOR TEMPORARY ACCESS AT SIDEWALK RAMPS AS NEEDED.

8. IT WILL BE THE CONTRACTOR'S RESPONSIBILITY TO NOTIFY THE ENGINEER, RESIDENTS AND THE VILLAGE WHEN ACCESS TO DRIVEWAYS WILL BE TEMPORARILY CLOSED DUE TO CURB AND GUTTER AND/OR DRIVEWAY REPLACEMENT. THE CONTRACTOR SHALL DISTRIBUTE NOTICES PROVIDED BY THE VILLAGE TO RESIDENTS AT LEAST 24 HOURS PRIOR TO PLANNED CLOSURE. EVERY EFFORT SHALL BE MADE TO ACCOMMODATE ACCESS TO THESE PROPERTIES INCLUDING KNOCKING ON DOORS WHEN DRIVEWAYS ARE ABOUT TO BE CLOSED.

9. THE TOP OF ALL NEW CURB BOXES ON DRAINAGE STRUCTURES SHALL BE STAMPED "DUMP NO WASTE - DRAINS TO RIVER".


10. THE CONTRACTOR WILL BE REQUIRED TO USE A STEEL PLATE OR PLATES TO CLOSE ANY GAPS OCCURRING WHEN A FRAME IS OFFSET FROM THE STRUCTURE. THE STEEL PLATE SHALL BE ½-INCH THICK AND APPROXIMATELY 6-INCH WIDE BY 24-INCH LONG. SOME ADJUSTMENT IN SIZE MAY BE NECESSARY TO PREVENT THE STEEL PLATE FROM OVERHANGING THE OUTSIDE OF THE STRUCTURE WALL. THE STEEL PLATE SHALL BE BEDDED IN AND COVERED WITH MORTAR.

11. NO OPEN TRENCH OR PIT SHALL REMAIN UNPROTECTED. IT IS THE CONTRACTOR'S RESPONSIBILITY TO BACKFILL THE TRENCH AND/OR PIT OR ERECT A STABLE AND SECURE SIX (6) FOOT HIGH CHAIN LINK FENCE AROUND THE PERIMETER OF EXCAVATION, ALONG WITH A STEEL PLATE OVER THE EXCAVATION TO PREVENT ANY ACCESS TO THE EXCAVATION WITHOUT THE CONTRACTOR'S PERMISSION. ALL EXCESS EXCAVATED MATERIAL AND DELIVERED MATERIAL FROM THE INSTALLATION OF UTILITIES AND/OR ROAD SHALL BE REMOVED AND DISPOSED OF OFF-SITE THE SAME DAY. CONTRACTOR IS NOT ALLOWED TO STOCKPILE MORE THAN 5 CUBIC YARDS OF MATERIAL OVERNIGHT. IF ANY MATERIAL STOCKPILES WILL REMAIN OVERNIGHT HIGHER THAN TWO (2) FEET, IT IS THE CONTRACTOR'S RESPONSIBILITY TO ERECT A STABLE AND SECURE SIX (6) FOOT HIGH CHAIN LINK FENCE AROUND THE PERIMETER OF THE STOCKPILED MATERIAL. THESE FENCES SHALL BE INSTALLED AND GATE/S LOCKED AT ALL TIMES EXCEPT WHEN ACCESS BY THE CONTRACTOR IS REQUIRED.

12. ALL POSTS, RAILROAD TIES, DECORATIVE TIMBER AND OTHER PRIVATE AMENITIES IN CONFLICT WITH THE PROPOSED IMPROVEMENTS SHALL BE REMOVED AND RELOCATED AS DETERMINED BY THE ENGINEER AT THE TIME OF CONSTRUCTION. EVERY EFFORT SHALL BE MADE BY THE CONTRACTOR WHEN REMOVING THESE ITEMS TO PRESERVE THEM FROM HARM. ITEMS NOT RELOCATED SHALL BE PROPERLY DISPOSED OF BY THE CONTRACTOR.

13. PRIOR TO CONSTRUCTION OF ANY PROPOSED UTILITIES, THE CONTRACTOR SHALL EXCAVATE AND LOCATE THE EXISTING UTILITIES TO VERIFY THEIR LOCATION, SIZE, AND DEPTH TO ENSURE THAT GRADE CONFLICTS WILL NOT OCCUR.

INDEX OF SHEETS



1	COVER
2	GENERAL NOTES, HIGHWAY STANDARDS, AND INDEX OF SHEETS
3 - 8	SUMMARY OF QUANTITIES
9 - 10	TYPICAL SECTIONS
11 - 19	ROADWAY PLAN
20	DETECTOR LOOP REPLACEMENT PLAN
21 - 22	VILLAGE DETAILS
23 - 24	MISCELLAENOUS DETAILS 
25 - 28	DISTRICT ONE DETAILS - BD
29 - 35	DISTRICT ONE DETAILS - TC
36 - 42	DISTRICT ONE DETAILS - TS

HIGHWAY STANDARDS

000001-08	STANDARD SYMBOLS, ABBREVIATIONS AND PATTERNS
424001-12	PERPENDICULAR CURB RAMPS FOR SIDEWALKS
424006-06	DIAGONAL CURB RAMPS FOR SIDEWALKS
424011-05	CORNER PARALLEL CURB RAMPS FOR SIDEWALKS
424016-06	MID-BLOCK CURB RAMPS FOR SIDEWALKS
424021-07	DEPRESSED CORNER FOR SIDEWALKS
442201-03	CLASS C AND D PATCHES
604001-05	FRAME AND LIDS TYPE 1
604091-05	FRAME AND GRATE TYPE 24
606001-08	CONCRETE CURB TYPE B AND COMBINATION CONCRETE CURB AND GUTTER
701006-05	OFF-RD OPERATIONS, 2L, 2W, 15' (4.5 m) TO 24" (600 mm) FROM PAVEMENT EDGE
701011-04	OFF-RD MOVING OPERATIONS, 2L, 2W, DAY ONLY
701101-05	OFF-RD OPERATIONS, MULTILANE, 15' (4.5 m) TO 24" (600 mm) FROM PAVEMENT EDGE
701301-04	LANE CLOSURE, 2L, 2W, SHORT TIME OPERATIONS
701311-03	LANE CLOSURE 2L, 2W MOVING OPERATIONS - DAY ONLY
701427-05	LANE CLOSURE, MULTILANE, INTERMITTENT OR MOVING OPER., FOR SPEEDS ≤ 40 MPH
701501-06	URBAN LANE CLOSURE, 2L, 2W, UNDIVIDED
701502-09	URBAN LANE CLOSURE, 2L, 2W, WITH BIDIRECTIONAL LEFT TURN LANE
701606-10	URBAN SINGLE LANE CLOSURE, MULTILANE, 2W WITH MOUNTABLE MEDIAN
701701-10	URBAN LANE CLOSURE, MULTILANE INTERSECTION
701801-06	SIDEWALK, CORNER OR CROSSWALK CLOSURE
701901-10	TRAFFIC CONTROL DEVICES
780001-05	TYPICAL PAVEMENT MARKINGS

DISTRICT ONE DETAILS

BD-08	FRAMES AND LIDS ADJUSTMENT WITH MILLING
BD-22	PAVEMENT PATCHING FOR HMA SURFACED PAVEMENT
BD-24	CURB OR CURB AND GUTTER REMOVAL AND REPLACEMENT
BD-32	BUTT JOINTS AND HMA TAPER
TC-10	TRAFFIC CONTROL AND PROTECTION FOR SIDE ROADS, INTERSECTIONS AND DRIVEWAYS
TC-11	RAISED REFLECTIVE PAVEMENT MARKERS (SNOW PLOW RESISTANT)
TC-13	DISTRICT ONE TYPICAL PAVEMENT MARKINGS
TC-14	TRAFFIC CONTROL AND PROTECTION AT TURN BAYS (TO REMAIN OPEN TO TRAFFIC)
TC-16	SHORT-TERM PAVEMENT MARKING LETTERS AND SYMBOLS
TC-22	ARTERIAL ROAD INFORMATION SIGN
TC-26	DRIVEWAY ENTRANCE SIGNING
TS-05	STANDARD TRAFFIC SIGNAL DESIGN DETAILS (7 SHEETS)
TS-07	DETECTOR LOOP INSTALLATION DETAIL FOR ROADWAY RESURFACING

	USER NAME = shyder	DESIGNED - SH	REVISED -  5/29/2025
		DRAWN - MVV	REVISED -
	PLOT SCALE = 40.0000 ' / in.	CHECKED - JBT	REVISED -
	PLOT DATE = 03-03-2025	DATE - 03-03-2025	FILE - 220009.23_SHT-GenNotes.dgn

STATE OF ILLINOIS
DEPARTMENT OF TRANSPORTATION

GENERAL NOTES, HIGHWAY STANDARDS, INDEX OF SHEETS

SCALE: N/A SHEET 1 OF 1 SHEETS STA. TO STA.

F.A.U. RTE.	SECTION	COUNTY	TOTAL SHEETS	SHEET NO.
1297	24-00213-00-R5	COOK	42	2
CONTRACT NO. 61L53				
ILLINOIS FED. AID PROJECT R52J(351)				

STATE OF ILLINOIS - PROFESSIONAL DESIGN FIRM
LICENSE NO. - 184-001121 - EXPIRES 4/30/2025
shyder 03-03-2025 11:41:05 AM \$FILE\$
MODEL Default
FILE NAME: P:\CU\HW220009-CIP Design\220009-23_Canview_RdCADDSheet13220009-23_SHT-SOQ.dgn



USER NAME = shyder	DESIGNED - SH	REVISED - 5/29/2025
	DRAWN - MVV	REVISED -
PLOT SCALE = 40.0000 ' / in.	CHECKED - JBT	REVISED -
PLOT DATE = 03-03-2025	DATE - 03-03-2025	FILE - 220009.23_SHT-SOQ.dgn

STATE OF ILLINOIS
DEPARTMENT OF TRANSPORTATION

SUMMARY OF QUANTITIES			
SCALE: N/A	SHEET 5	OF 6 SHEETS	STA. TO STA.

F.A.U. RTE.	SECTION	COUNTY	TOTAL SHEETS	SHEET NO.
1297	24-00213-00-R5	COOK	42	7
CONTRACT NO. 61L53				
ILLINOIS FED. AID PROJECT R52J(351)				

CODE NO.	ITEM	UNIT	TOTAL QUANTITY	CONSTRUCTION CODE
				80% STU 20% Village
				Roadway
				0005 Urban
* 78000100	THERMOPLASTIC PAVEMENT MARKING - LETTERS AND SYMBOLS	SQ FT	506	506
* 78000200	THERMOPLASTIC PAVEMENT MARKING - LINE 4"	FOOT	7,194	7,194
* 78000400	THERMOPLASTIC PAVEMENT MARKING - LINE 6"	FOOT	3,561	3,561
* 78000600	THERMOPLASTIC PAVEMENT MARKING - LINE 12"	FOOT	755	755
* 78000650	THERMOPLASTIC PAVEMENT MARKING - LINE 24"	FOOT	316	316
78300200	RAISED REFLECTIVE PAVEMENT MARKER REMOVAL	EACH	84	84
78300202	PAVEMENT MARKING REMOVAL - WATER BLASTING	SQ FT	5,542	5,542
X0327611	REMOVE AND REINSTALL BRICK PAVER	SQ FT	42	42
* X1400326	RECTANGULAR RAPID FLASHING BEACON ASSEMBLY (COMPLETE)	EACH	2	2
X4230710	PORTLAND CEMENT CONCRETE DRIVEWAY PAVEMENT, 6 INCH, (SPECIAL)	SQ YD	363	363
X4230800	PORTLAND CEMENT CONCRETE DRIVEWAY PAVEMENT, 8 INCH, (SPECIAL)	SQ YD	50	50
X4240800	DETECTABLE WARNINGS (SPECIAL)	SQ FT	620	620
X4021000	TEMPORARY ACCESS (PRIVATE ENTRANCE)	EACH	70	70
X4022000	TEMPORARY ACCESS (COMMERCIAL ENTRANCE)	EACH	14	14
X6030310	FRAMES AND LIDS TO BE ADJUSTED (SPECIAL)	EACH	24	24
X7200061	TEMPORARY INFORMATION SIGNING	SQ FT	155	155

* SPECIALTY ITEM


STATE OF ILLINOIS - PROFESSIONAL DESIGN FIRM
LICENSE NO. - 184-001121 - EXPIRES 4/30/2025
mvandervelden 03-03-2025 9:11:39 AM
MODEL Default
FILE NAME: R:\S\WV\220009\cjp_Design\220009.23_Glenview_Rd\CADD\Sheet\220009.23_SHT-SOQ.dgn

...\\plotdrv\pdf-BW_Default.plt
...\\plots\220009.23_Phase2.Tbl
\$FILES

BAXTER

WOODMAN

Consulting Engineers

USER NAME	= mvandervelden	DESIGNED -	SH	REVISED -	 5/29/2025
		DRAWN -	MVV	REVISED -	
PLOT SCALE	= 40.0000 ' / in.	CHECKED -	JBT	REVISED -	
PLOT DATE	= 03-03-2025	DATE -	03-03-2025	FILE -	220009.23_SHT-SOQ.dgn

STATE OF ILLINOIS
DEPARTMENT OF TRANSPORTATION

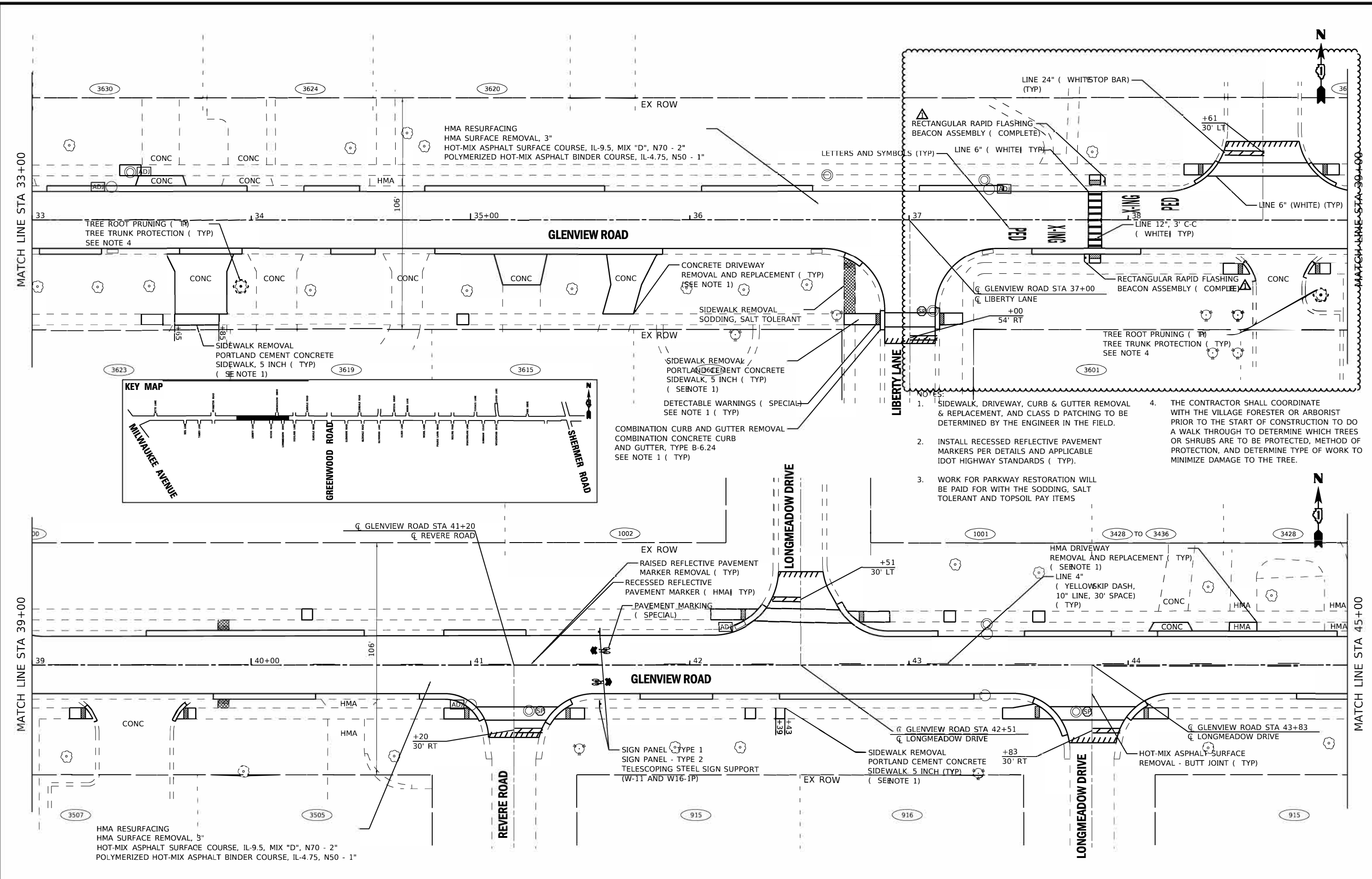
SUMMARY OF QUANTITIES			
SCALE: N/A	SHEET 6	OF 6 SHEETS	STA. TO STA.

F.A.U. RTE.	SECTION	COUNTY	TOTAL SHEETS	SHEET NO.
1297	24-00213-00-RS	COOK	42	8
CONTRACT NO. 61L53				
ILLINOIS FED. AID PROJECT RS2J(351)				

CODE NO.	ITEM	UNIT	TOTAL QUANTITY	CONSTRUCTION CODE
				80% STU 20% Village
				Roadway
				0005
				Urban
* X7810301	RECESSED REFLECTIVE PAVEMENT MARKER (HMA)	EACH	84	84
* X8780012	CONCRETE FOUNDATION, TYPE A 12-INCH DIAMETER	FOOT	12	12
X8860105	DETECTOR LOOP REPLACEMENT	FOOT	248	248
XX006947	HOT-MIX ASPHALT DRIVEWAY REMOVAL AND REPLACEMENT	SQ YD	413	413
XX008348	MORTAR EXISTING STRUCTURE	EACH	5	5
* XX008910	PAVEMENT MARKING (SPECIAL)	SQ FT	94	94
Z0013798	CONSTRUCTION LAYOUT	L SUM	1	1
Z0017400	DRAINAGE & UTILITY STRUCTURES TO BE ADJUSTED	EACH	51	51
Z0017700	DRAINAGE & UTILITY STRUCTURES TO BE RECONSTRUCTED	EACH	10	10

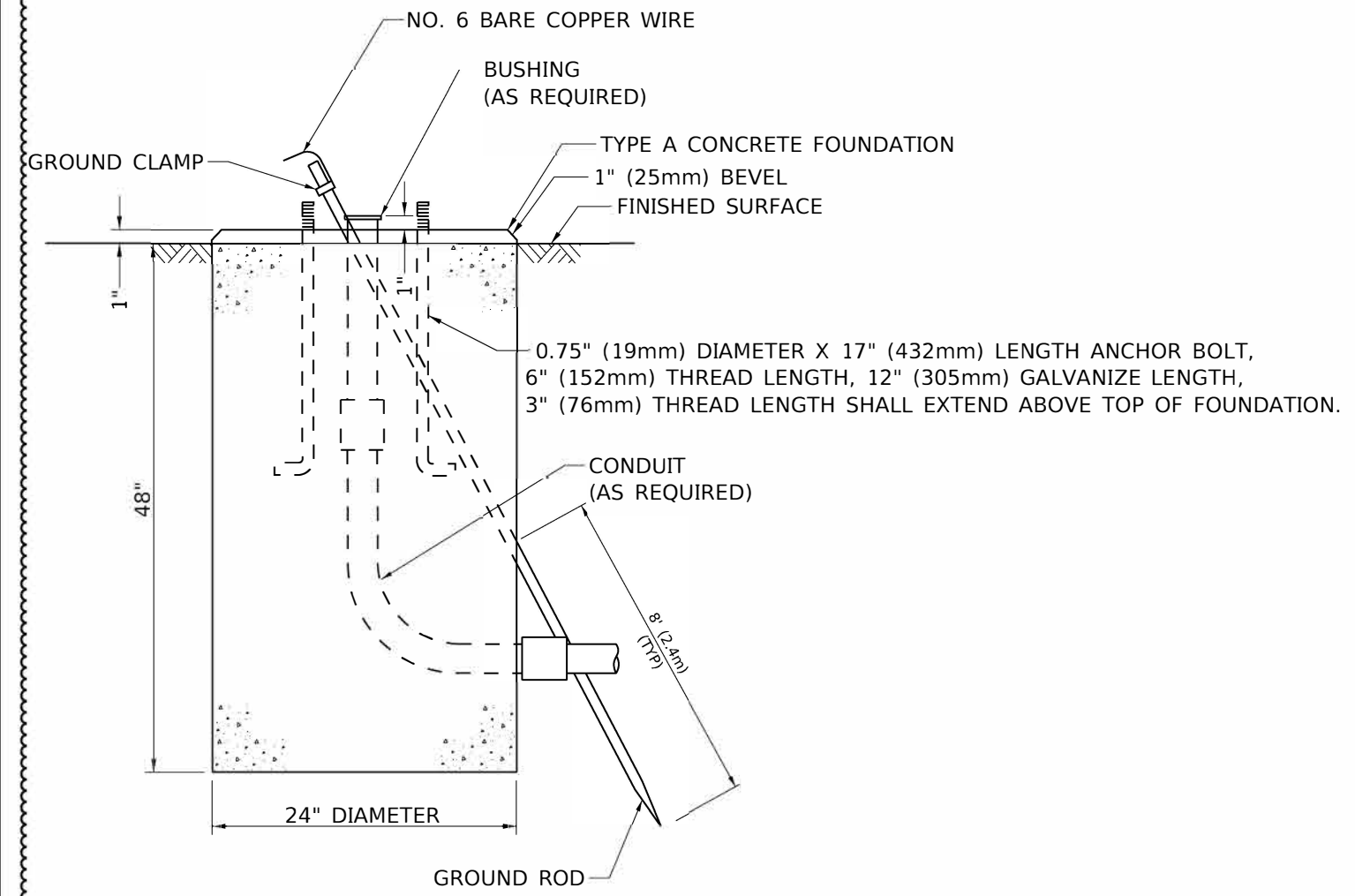
* SPECIALTY ITEM

STATE OF ILLINOIS - PROFESSIONAL DESIGN FIRM
...\\bldtrvpdf\B\W_Default.plt
...\\P01s220009.23_Phase2.TBL
SHYDER 03-03-2025 11:41:16 AM
\$FILE\$
MODEL Default
FILE Name: P:\G\HW0220009-CP Design\220009.23 Glenview_Rd\CA\DD\Sheet320009.23_SHT-Plan3-Glenview.dgn

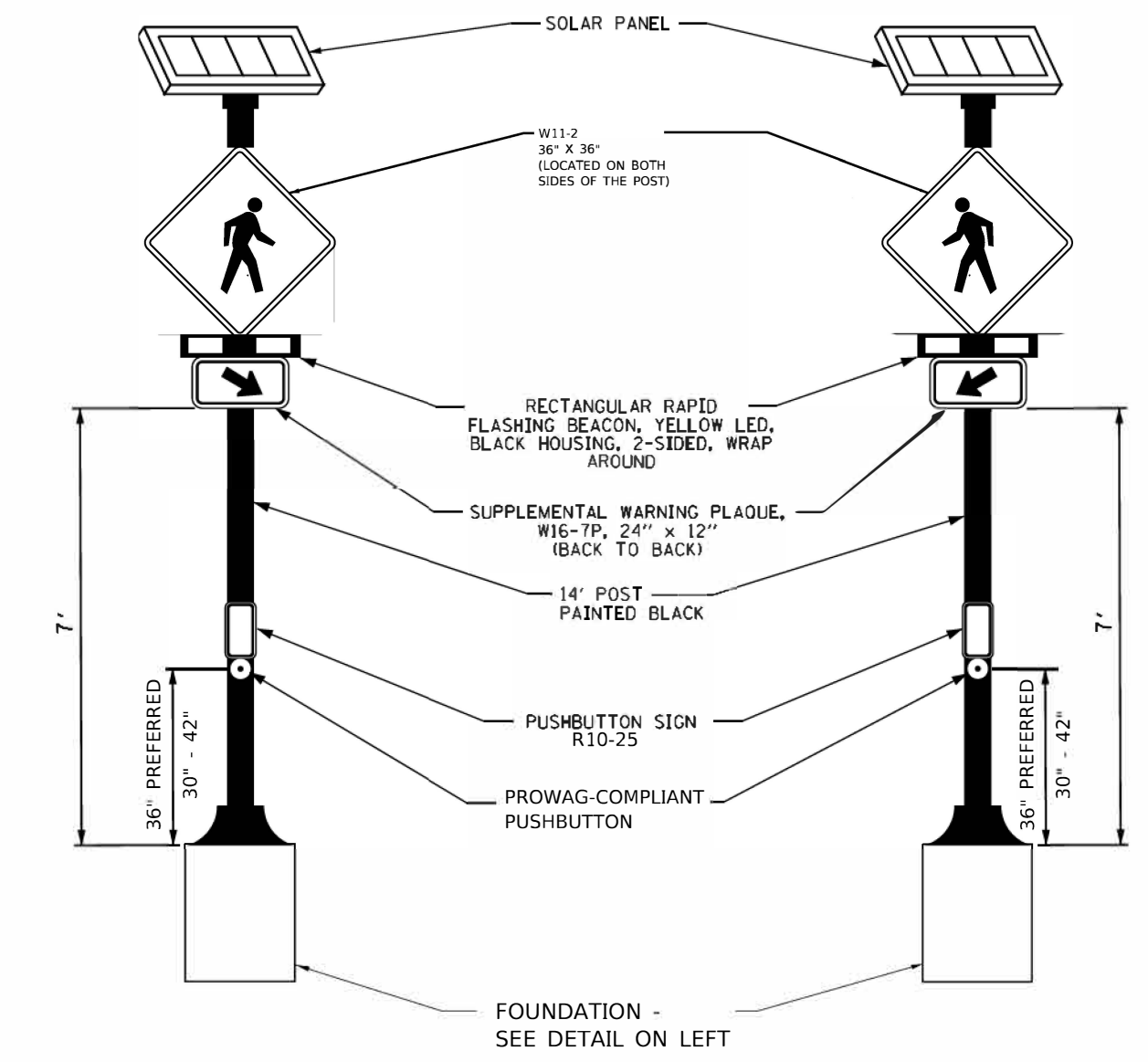


BAXTER & WOODMAN Consulting Engineers	USER NAME = shyder	DESIGNED - SH	REVISED - 5/29/2025	STATE OF ILLINOIS DEPARTMENT OF TRANSPORTATION	ROADWAY PLAN GLENVIEW ROAD	SCALE: 1" = 20'	SHEET 3 OF 9 SHEETS	STA. 33+00 TO STA. 45+00	F.A.U. RTE.	SECTION	COUNTY	TOTAL SHEETS	SHEET NO.
	DRAWN - MVV	REVIS	REVIS						1297	24-00213-00-RS	COOK	42	13
	PLOT SCALE = 40.0000' / in.	CHECKED - JBT	REVIS						CONTRACT NO. 61L53				
	PLOT DATE = 03-03-2025	DATE - 03-03-2025	FILE - 220009.23_SHT-Plan3-Glenview.dgn						ILLINOIS FED. AID PROJECT RS2(J351)				

STATE OF ILLINOIS - PROFESSIONAL DESIGN FIRM
LICENSE NO. - 184-001121 - EXPIRES 4/30/2025
SHYDER - Default
03-03-2025 11:41:34 AM
FILE NAME: P:\GLV\2009-23 Design\2009-23 Glenview_Rd\CD\Sheets\2009-23_SHT-MiscDetails.dgn



FOUNDATION DETAIL
(NOT TO SCALE)



RECTANGULAR RAPID FLASHING BEACON, POST MOUNTED, SOLAR POWERED INSTALLATION DETAIL
(NOT TO SCALE)