

F.A.U. RTE.	SECTION	COUNTY	TOTAL SHEETS	SHEET NO.
3520	21-00110-00-RS	COOK	24	1
FED. ROAD DIST. NO.	ILLINOIS	CONTRACT NO. 61L63		

INDEX OF SHEETS

SEE SHEET 2 FOR INDEX OF SHEETS

HIGHWAY STANDARDS

SEE SHEET 2 FOR LIST OF HIGHWAY STANDARDS

DISTRICT 1 DETAILS

SEE SHEET 2 FOR LIST OF DISTRICT 1 DETAILS

06-13-2025 LETTING ITEM 010

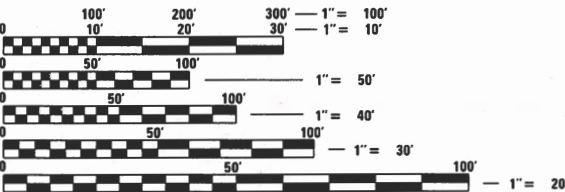
STATE OF ILLINOIS
DEPARTMENT OF TRANSPORTATION
**PLANS FOR PROPOSED
FEDERAL AID HIGHWAY**
FAU 3520 (GROSS POINT ROAD)
FAU 1332 (OAKTON STREET) TO MUN 4031 (MAIN STREET)
ROADWAY IMPROVEMENTS, RESURFACING
VILLAGE OF MORTON GROVE
SECTION NO. 21-00110-00-RS
PROJECT NO. NHVQ(365)
COOK COUNTY
C-91-133-25



DESIGN FIRM REGISTRATION NUMBER: 184-001016
8725 W. Higgins Road, Suite 600 | Chicago, IL 60631
P 773.775.4009 | www.ciorba.com

GROSS POINT ROAD: MINOR URBAN ARTERIAL

ADT (2022) = 16,600
DESIGN SPEED = 30 MPH
POSTED SPEED = 30 MPH
DESIGN DESIGNATION - 672(16) URBAN COLLECTOR



FULL SIZE PLANS HAVE BEEN PREPARED USING STANDARD
ENGINEERING SCALES. REDUCED SIZED PLANS WILL NOT
CONFORM TO STANDARD SCALES. IN MAKING MEASUREMENTS
ON REDUCED PLANS, THE ABOVE SCALES MAY BE USED.

J.U.L.I.E.
JOINT UTILITY LOCATION INFORMATION FOR EXCAVATION
1-800-892-0123
OR 811

CONTRACT NO. 61L63



PROJECT BEGINS
STA 201+28.00
GROSS POINT ROAD

PROJECT ENDS
STA 230+25.32
GROSS POINT ROAD

LOCATION MAP
(NOT TO SCALE)
PROJECT LENGTH

GROSS LENGTH (GROSS POINT ROAD) = 2,897 FT. = 0.55 MILE
NET LENGTH (GROSS POINT ROAD) = 2,897 FT. = 0.55 MILE



DATE: 2/28/2025
SEAL EXPIRES: 11/30/2025

Matthew J. Lehan



STATE OF ILLINOIS DEPARTMENT OF TRANSPORTATION

Approved: *[Signature]* DATE: 02/28/2025
Village of Morton Grove, Village Engineer

Passed: *[Signature]* DATE: APRIL 2 2025
District 1 Engineer of Local Roads & Streets

Releasing for Bid Based on Limited Review: *[Signature]* DATE: April 9 2025
Regional Engineer

PRINTED BY THE AUTHORITY
OF THE STATE OF ILLINOIS

INDEX OF SHEETS

SHEET NO	DESCRIPTION
1	COVER SHEET
2	INDEX, STANDARDS AND GENERAL NOTES
3 - 5	SUMMARY OF QUANTITIES
6 - 7	TYPICAL SECTIONS
8 - 10	PROPOSED PLAN
11	MAINTENANCE OF TRAFFIC GENERAL NOTES AND STAGING
12 - 14	PAVEMENT MARKING PLAN
15 - 24	IDOT DISTRICT 1 DETAILS

LIST OF IDOT STANDARD DRAWINGS

000001-08	STANDARD SYMBOLS, ABBREVIATIONS AND PATTERNS
001001-02	AREAS OF REINFORCEMENT BARS
001006	DECIMAL OF AN INCH TO A FOOT
424001-12	PERPENDICULAR CURB RAMPS FOR SIDEWALKS
424006-06	DIAGONAL CURB RAMPS
424011-05	CORNER PARALLEL CURB RAMPS FOR SIDEWALKS
424016-06	MID-BLOCK CURB RAMPS FOR SIDEWALKS
424021-07	DEPRESSED CORNER FOR SIDEWALKS
424026-04	ENTRANCE ALLEY PEDESTRIAN CROSSING
442201-03	CLASS C&D PATCHES
604001-05	FRAME AND LIDS TYPE 1
604051-04	FRAMES AND GRATE TYPE 11
606001-08	CONCRETE CURB AND COMBINATION CONCRETE CURB AND GUTTER
701006-05	OFF-RD OPERATIONS 2L 2W 15' TO 24" FROM PAVEMENT EDGE
701301-04	LANE CLOSURE, 2L, 2W, SHORT TIME OPERATIONS
701311-03	LANE CLOSURE 2L, 2W MOVING OPERATIONS - DAY ONLY
701427-05	LANE CLOSURE MULTILANE INTERMITTENT OR MOVING OPERATIONS 40MPH OR LESS
701501-06	URBAN LANE CLOSURE, 2L, 2W, UNDIVIDED
701606-10	URBAN SINGLE LANE CLOSURE MULTILANE, 2W WITH MOUNTABLE MEDIAN
701701-10	URBAN LANE CLOSURE MULTILANE INTERSECTION
701801-06	SIDEWALK, CORNER OR CROSSWALK CLOSURE
701901-10	TRAFFIC CONTROL DEVICES

LIST OF DISTRICT ONE DETAILS

BD-08	FRAMES AND LIDS ADJUSTMENT WITH MILLING
BD-22	PAVEMENT PATCHING FOR HMA SURFACED PAVEMENT
BD-24	CURB OR CURB AND GUTTER REMOVAL AND REPLACEMENT
BD-32	BUTT JOINTS AND HMA TAPER
TC-10	TRAFFIC CONTROL AND PROTECTION FOR SIDE ROADS, INTERSECTIONS, AND DRIVEWAYS
TC-11	RAISED REFLECTIVE PAVEMENT MARKERS (SNOW PLOW RESISTANT)
TC-13	TYPICAL PAVEMENT MARKINGS
TC-16	SHORT TERM PAVEMENT MARKING AND SYMBOLS
TC-22	ARTERIAL ROAD INFORMATION SIGN
TC-26	DRIVEWAY ENTRANCE SIGNING

GENERAL NOTES

1. IT IS THE CONTRACTOR'S RESPONSIBILITY TO ASCERTAIN EXISTING FIELD CONDITIONS PRIOR TO BIDDING ON THIS PROJECT.
2. WHEN THE PLANS OR SPECIAL PROVISIONS INCLUDE INFORMATION PERTAINING TO THE LOCATION AND ELEVATIONS OF UTILITY FACILITIES, SUCH INFORMATION REPRESENTS ONLY THE OPINION OF THE ENGINEER AS TO LOCATION AND ELEVATION OF SUCH UTILITIES AND IS ONLY INCLUDED FOR THE CONVENIENCE OF THE BIDDERS. THE ENGINEER AND THE OWNER ASSUME NO RESPONSIBILITY WHATEVER IN RESPECT TO THE SUFFICIENCY OR ACCURACY OF THE INFORMATION SHOWN ON THE PLANS RELATIVE TO THE LOCATION AND ELEVATION OF UTILITY FACILITIES, NOR THE MANNER IN WHICH THEY ARE TO BE REMOVED OR ADJUSTED.
3. THE CONTRACTOR SHALL CONTACT J.U.L.I.E. AT 1-800-892-0123AT LEAST 48 HOURS PRIOR TO START OF WORK.
4. ANY EXISTING ROADWAY PAVEMENT OR SHOULDER DISTURBED DURING CONSTRUCTION THAT IS NOT SCHEDULED TO BE REMOVED SHALL BE RESTORED IN ACCORDANCE WITH I.D.O.T. AND VILLAGE OF MORTON GROVE STANDARDS AT NO ADDITIONAL COST TO THE CONTRACT.
5. TACK COAT MUST BE INSTALLED NO EARLIER THAN TWENTY-FOUR (24) HOURS PRIOR TO PLACEMENT OF HOT-MIX ASPHALT.
6. THE CONTRACTOR SHALL MAKE ALL NECESSARY FINAL ADJUSTMENTS TO EXISTING AND PROPOSED FRAMES, GRATES, LIDS, AND STRUCTURES TO MEET FINAL FINISHED GRADES.
7. THE CONTRACTOR SHALL MAINTAIN AND KEEP UP TO DATE A SET OF "RECORD DRAWINGS" SHOWING ALL CHANGES FROM THE ORIGINAL PLANS. THE CONTRACTOR SHALL DELIVER THE "RECORD DRAWINGS" TO THE ENGINEER AT THE CONCLUSION OF THE PROJECT.
8. MILLING OF THE ROADWAY WILL TAKE PLACE BEFORE PAVEMENT PATCH LOCATIONS ARE DETERMINED. IF AFTER MILLING IT IS DETERMINED THAT PATCHES SHOWN ON THE PLANS ARE NOT REQUIRED, THEN THEY WILL BE REMOVED.
9. CONCRETE CURB AND GUTTER SHALL BE DEPRESSED AT ALL DRIVEWAYS AND ENTRANCES.
10. THE CONTRACTOR SHALL CONTACT KALPANA KANNAN-HOSADURGA, THE DISTRICT ONE TRAFFIC CONTROL SUPERVISOR, AT KALPANA.KANNAN-HOSADURGA@ILLINOIS.GOV A MINIMUM OF 72 HOURS IN ADVANCE OF BEGINNING WORK.
11. THE CONTRACTOR SHALL TAKE PRECAUTION BY PRESERVING EXISTING TREES WITHIN THE RIGHT OF WAY. IF ANY DAMAGE OCCURS, TREES SHALL BE REPLACED IN KIND PER ARTICLE 201.07 REPAIR OR REPLACEMENT OF EXISTING PLANT MATERIAL REQUIREMENTS STATED HEREIN.

DATE PLOTTED = 2/28/2025 1:36:19 PM
PEN TABLE = prof.tbl
PLOT CONFIG = IDOT_PDF_NetLayers_BW.pltcf
FILE NAME = p:\c\ciorba-pw\kentley.com\ciorba-pw-01\Documents\projects\ILL_Municipalities\Morton Grove\0021456.23\CADD Data\SH\MiscSheets\0021456.23-shl-gennotes.dgn



8725 W. Higgins Rd, Ste 600, Chicago, IL 60631
P 773.775.4009 | www.ciorba.com

USER NAME = aham	DESIGNED - AMH	REVISED -
	DRAWN - AMH	REVISED -
PLOT SCALE = 1" = 20'	CHECKED - EPS	REVISED -
PLOT DATE = 10/31/2024	DATE - 2/28/2025	REVISED -

STATE OF ILLINOIS
DEPARTMENT OF TRANSPORTATION

GROSS POINT ROAD LOCAL AGENCY FUNCTIONAL OVERLAY
INDEX, STANDARDS AND GENERAL NOTES

SCALE: NTS	SHEET	OF	SHEETS	STA.	TO STA.
------------	-------	----	--------	------	---------

F.A.U. RTE.	SECTION	COUNTY	TOTAL SHEETS	SHEET NO.
3520	21-00110-00-RS	COOK	24	2
		CONTRACT NO. 61L63		
		ILLINOIS FED. AID PROJECT		

DATE PLOTTED = 3/15/2025 12:29:45 PM
PEN TABLE = 300#180
PLOT CONFIG = CBT-PDF-plot-fg
MODEL = \$MODEL\MATRES
FILE NAME = pw\ciorba-pw-bentley.com\ciorba-pw-01\Documents\Project\ciorba-Municipalities\Martin Grove\0021456-23\CADD Data\Sheet\Sheet6021456-23-m-500.dgn

SPECIALTY ITEM	CODE NO.	ITEM	UNIT	TOTAL	ROADWAY 80% FED / 20% LOCAL 0005	ROADWAY 100% LOCAL 0005
	20101400	NITROGEN FERTILIZER NUTRIENT	POUND	12	12	
	20101600	POTASSIUM FERTILIZER NUTRIENT	POUND	12	12	
	20200100	EARTH EXCAVATION	CU YD	39	39	
	20201200	REMOVAL AND DISPOSAL OF UNSUITABLE MATERIAL	CU YD	115	115	
	21101615	TOPSOIL FURNISH AND PLACE, 4"	SQ YD	947	947	
	25200110	SODDING, SALT TOLERANT	SQ YD	947	947	
	25200200	SUPPLEMENTAL WATERING	UNIT	52	52	
	28000510	INLET FILTERS	EACH	69	69	
	30300001	AGGREGATE SUBGRADE IMPROVEMENT	CU YD	123	123	
	31101180	SUBBASE GRANULAR MATERIAL, TYPE B 2"	SQ YD	1,009	1,009	
	31101600	SUBBASE GRANULAR MATERIAL, TYPE B 8"	SQ YD	23	23	
	40600290	BITUMINOUS MATERIALS (TACK COAT)	POUND	9,038	9,038	
	40600370	LONGITUDINAL JOINT SEALANT	FOOT	9,099	9,099	
	40600400	MIXTURE FOR CRACKS, JOINTS, AND FLANGEWAYS	TON	15	15	
	40600982	HOT-MIX ASPHALT SURFACE REMOVAL - BUTT JOINT	SQ YD	273	273	
	40603200	POLYMERIZED HOT-MIX ASPHALT BINDER COURSE, IL-4.75, N50	TON	459	459	

SPECIALTY ITEM	CODE NO.	ITEM	UNIT	TOTAL	ROADWAY 80% FED / 20% LOCAL 0005	ROADWAY 100% LOCAL 0005
	40604062	HOT-MIX ASPHALT SURFACE COURSE, IL-9.5, MIX "D", N70	TON	1,229	1,229	
	42300200	PORTLAND CEMENT CONCRETE DRIVEWAY PAVEMENT, 6 INCH	SQ YD	23	23	
	42400200	PORTLAND CEMENT CONCRETE SIDEWALK 5 INCH	SQ FT	6,171	6,171	
	42400800	DETECTABLE WARNINGS	SQ FT	635	635	
	44000155	HOT-MIX ASPHALT SURFACE REMOVAL, 1 1/2"	SQ YD	3,721	3,721	
	44000158	HOT-MIX ASPHALT SURFACE REMOVAL, 2 1/4"	SQ YD	10,635	10,635	
	44000200	DRIVEWAY PAVEMENT REMOVAL	SQ YD	23	23	
	44000600	SIDEWALK REMOVAL	SQ FT	6,324	6,324	
	44201725	CLASS D PATCHES, TYPE I, 7 INCH	SQ YD	25	25	
	44201729	CLASS D PATCHES, TYPE II, 7 INCH	SQ YD	25	25	
	44201733	CLASS D PATCHES, TYPE III, 7 INCH	SQ YD	25	25	
	44201735	CLASS D PATCHES, TYPE IV, 7 INCH	SQ YD	797	797	
	44201749	CLASS D PATCHES, TYPE I, 9 INCH	SQ YD	25	25	
	44201753	CLASS D PATCHES, TYPE II, 9 INCH	SQ YD	22	22	
	44201757	CLASS D PATCHES, TYPE III, 9 INCH	SQ YD	59	59	
	44201759	CLASS D PATCHES, TYPE IV, 9 INCH	SQ YD	189	189	



USER NAME = aharn	DESIGNED - AMH	REVISED -
	DRAWN - AMH	REVISED -
PLOT SCALE = 1" = 20'	CHECKED - EPS	REVISED -
PLOT DATE = 10/31/2024	DATE - 3/25/2025	REVISED -

STATE OF ILLINOIS
DEPARTMENT OF TRANSPORTATION

GROSS POINT ROAD LOCAL AGENCY FUNCTIONAL OVERLAY
SUMMARY OF QUANTITIES

SCALE: NTS SHEET OF SHEETS STA. TO STA.

F.A.U. RTE. 3520	SECTION 21-00110-00-RS	COUNTY COOK	TOTAL SHEETS 24	SHEET NO. 3
CONTRACT NO. 61L63				
ILLINOIS FED. AID PROJECT				

DATE PLOTTED = 3/25/2025 12:40:00 PM
PLOT FILE = p:\proj\2025\proj2\101\p101.dwg
PLOTTER = HP DesignJet T120
MODEL = MODELNAME
FILE NAME = p:\proj\2025\proj2\101\p101.dwg



USERNAME = aham	DESIGNED - AMH	REVISED -
	DRAWN - AMH	REVISED -
PLOT SCALE = 1" = 20'	CHECKED - EPS	REVISED -
PLOT DATE = 10/31/2024	DATE - 3/25/2025	REVISED -

STATE OF ILLINOIS
DEPARTMENT OF TRANSPORTATION

GROSS POINT ROAD LOCAL AGENCY FUNCTIONAL OVERLAY
SUMMARY OF QUANTITIES

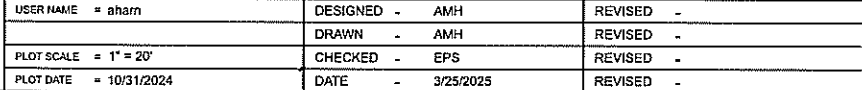
SCALE: NTS SHEET OF SHEETS STA. TO STA.

F.A.U. RTE.	SECTION	COUNTY	TOTAL SHEETS	SHEET NO.
3520	21-00110-00-RS	COOK	24	4
CONTRACT NO. 61L63				
ILLINOIS FED. AID PROJECT				

SPECIALTY ITEM	CODE NO.	ITEM	UNIT	TOTAL	ROADWAY 80% FED / 20% LOCAL 0005	ROADWAY 100% LOCAL 0005
	44201761	CLASS D PATCHES, TYPE I, 10 INCH	SQ YD	25	25	
	44201765	CLASS D PATCHES, TYPE II, 10 INCH	SQ YD	25	25	
	44201769	CLASS D PATCHES, TYPE III, 10 INCH	SQ YD	25	25	
	44201771	CLASS D PATCHES, TYPE IV, 10 INCH	SQ YD	227	227	
	60265700	VALVE VAULTS TO BE ADJUSTED	EACH	1	1	
	60266100	VALVE VAULTS TO BE RECONSTRUCTED	EACH	1	1	
	60404800	FRAMES AND GRATES, TYPE 11	EACH	5	5	
	60406000	FRAMES AND LIDS, TYPE 1, OPEN LID	EACH	5	5	
	60406100	FRAMES AND LIDS, TYPE 1, CLOSED LID	EACH	5	5	
*	66900200	NON-SPECIAL WASTE DISPOSAL	CU YD	50		50
*	66900530	SOIL DISPOSAL ANALYSIS	EACH	2		2
*	66901001	REGULATED SUBSTANCES PRE-CONSTRUCTION PLAN	L SUM	1		1
*	66901003	REGULATED SUBSTANCES FINAL CONSTRUCTION REPORT	L SUM	1		1
*	66901006	REGULATED SUBSTANCES MONITORING	CAL DA	4		4
	67100100	MOBILIZATION	L SUM	1	1	
	70102620	TRAFFIC CONTROL AND PROTECTION, STANDARD 701501	L SUM	1	1	

SPECIALTY ITEM	CODE NO.	ITEM	UNIT	TOTAL	ROADWAY 80% FED / 20% LOCAL 0005	ROADWAY 100% LOCAL 0005
	70102625	TRAFFIC CONTROL AND PROTECTION, STANDARD 701606	L SUM	1	1	
	70102635	TRAFFIC CONTROL AND PROTECTION, STANDARD 701701	L SUM	1	1	
	70102640	TRAFFIC CONTROL AND PROTECTION, STANDARD 701801	L SUM	1	1	
	70300100	SHORT TERM PAVEMENT MARKING	FOOT	2,014	2,014	
	70300150	SHORT TERM PAVEMENT MARKING REMOVAL	SQ FT	672	672	
	70300211	TEMPORARY PAVEMENT MARKING LETTERS AND SYMBOLS - PAINT	SQ FT	63	63	
	70300221	TEMPORARY PAVEMENT MARKING - LINE 4"- PAINT	FOOT	24,162	24,162	
	70300241	TEMPORARY PAVEMENT MARKING - LINE 6"- PAINT	FOOT	168	168	
	70300261	TEMPORARY PAVEMENT MARKING - LINE 12"- PAINT	FOOT	7,713	7,713	
	70300281	TEMPORARY PAVEMENT MARKING - LINE 24"- PAINT	FOOT	747	747	
*	78000100	THERMOPLASTIC PAVEMENT MARKING - LETTERS AND SYMBOLS	SQ FT	21	21	
*	78000200	THERMOPLASTIC PAVEMENT MARKING - LINE 4"	FOOT	8,054	8,054	
*	78000400	THERMOPLASTIC PAVEMENT MARKING - LINE 6"	FOOT	56	56	
*	78000600	THERMOPLASTIC PAVEMENT MARKING - LINE 12"	FOOT	2,571	2,571	
*	78000650	THERMOPLASTIC PAVEMENT MARKING - LINE 24"	FOOT	249	249	
*	78100100	RAISED REFLECTIVE PAVEMENT MARKER	EACH	123	123	

DATE PLOTTED = 3/25/2025 12:40:12 PM
 PLOT TABLE = P09#181
 PLOT TABLE = C:\PWS\p1cdg
 MODEL NUMBER NAME
 FILE NAME: c:\pws\pws-pw-bentivay.com\data-pw-01\Documents\Projects\01_Municipalities\Porton Grave\0011456-23-000D_Data\01Municipalities\0011456-23-00D.dgn



GROSS POINT ROAD LOCAL AGENCY FUNCTIONAL OVERLAY SUMMARY OF QUANTITIES

SCALE:	SHEET	OF	SHEETS	STA.	TO STA.
--------	-------	----	--------	------	---------

DATE PLOTTED = 3/26/2025 7:35:52 AM
PEN TABLE = plot.tbl
PLOT CONFIG = GdPlot.pltcf
PLOT FILE = \\s01delmaines
PLOT NAME = Proj\Gross-pt-bentley\consolidated\gross-pt-bentley\project\IL_Municipal\Hills/Morton Grove\0021456.23\CADD Data\SH\Typical\Sections\0021456.23_Typ_Sections



USER NAME =	aham	DESIGNED -	AMH	REVISED -	
		DRAWN -	AMH	REVISED -	
PLOT SCALE =	1" = 20'	CHECKED -	EPS	REVISED -	
PLOT DATE =	10/31/2024	DATE -	3/26/2025	REVISED -	

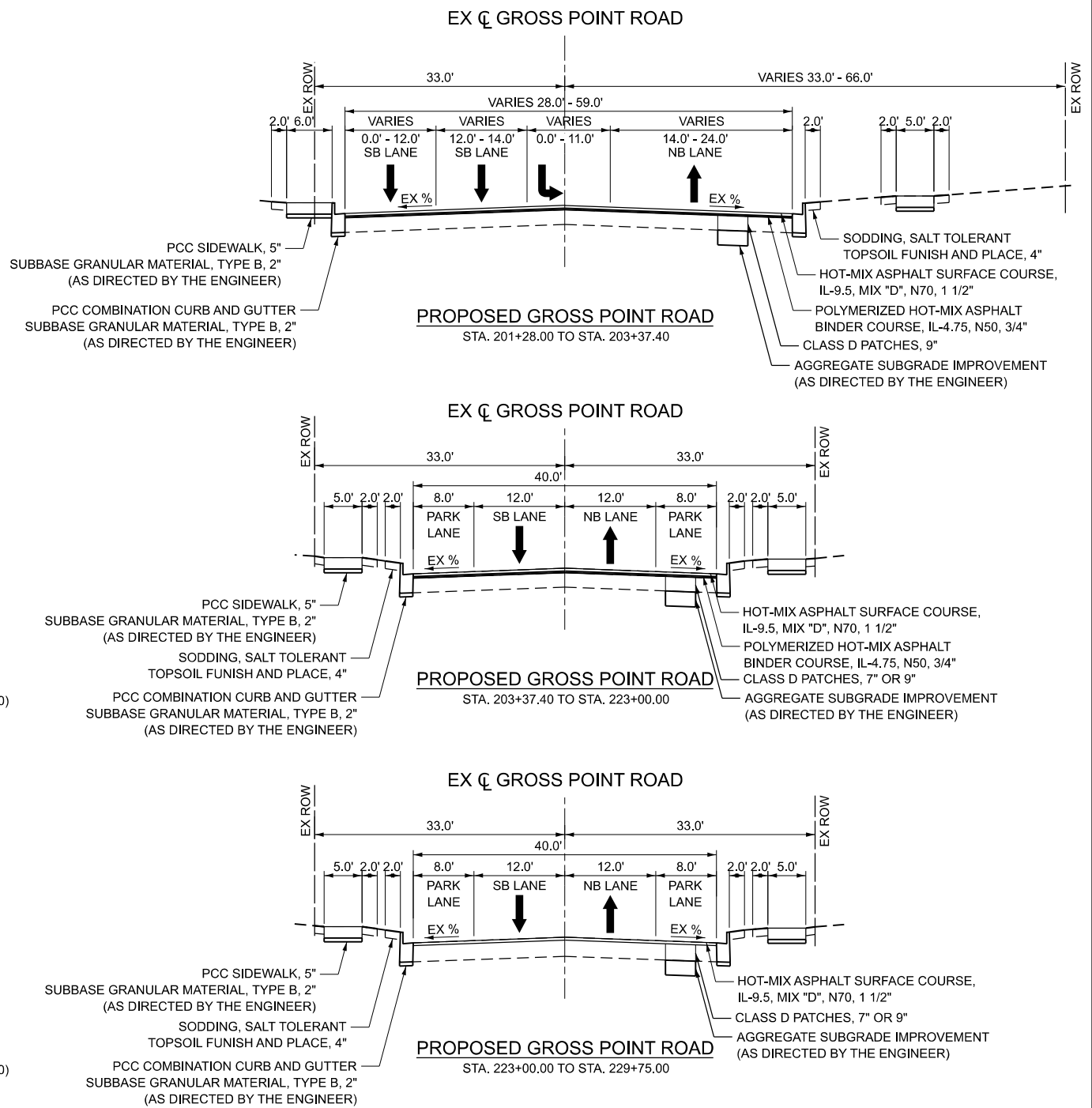
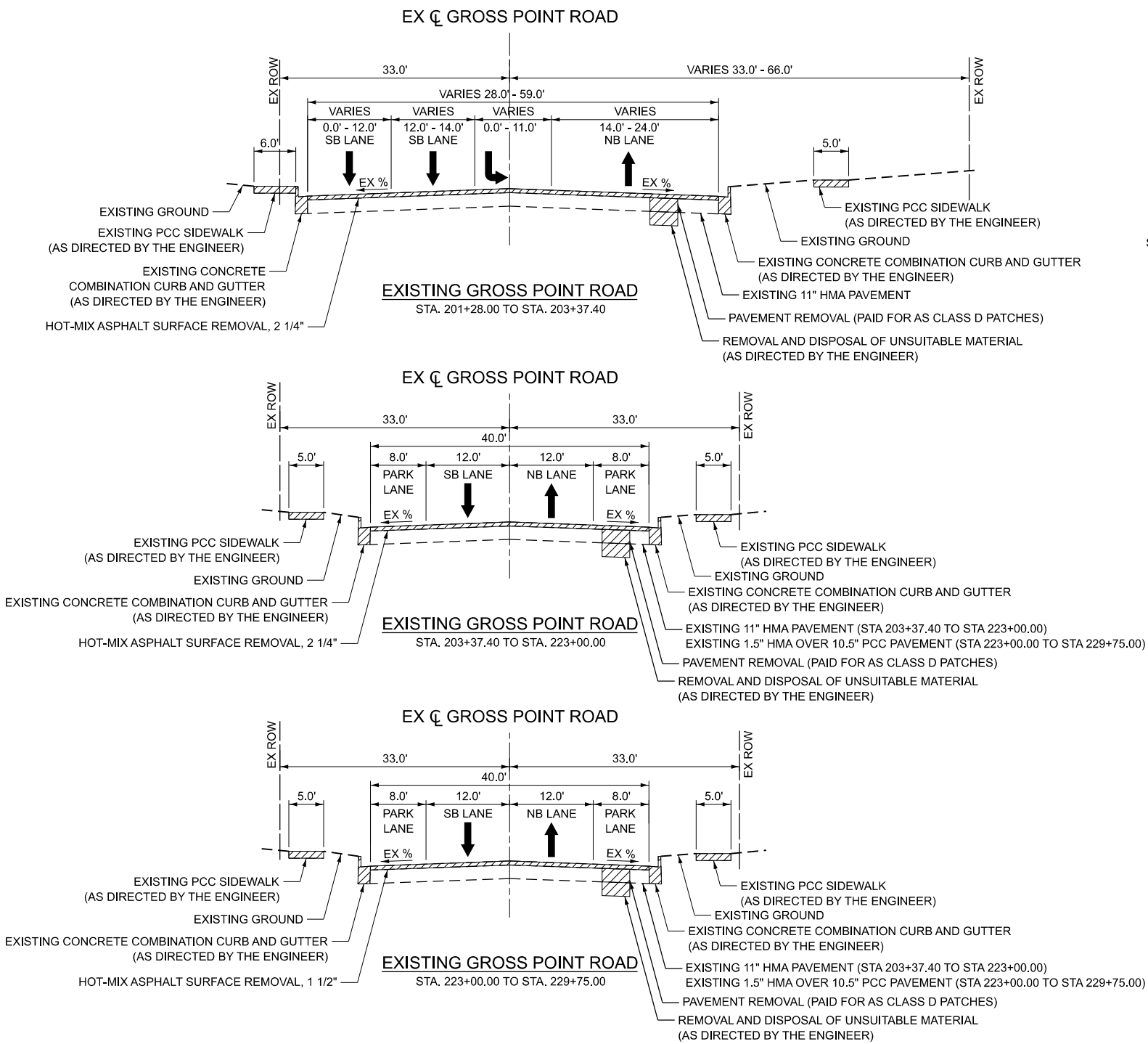
STATE OF ILLINOIS
DEPARTMENT OF TRANSPORTATION

GROSS POINT ROAD LOCAL AGENCY FUNCTIONAL OVERLAY
TYPICAL SECTIONS

SCALE: 1" = 20' SHEET OF SHEETS STA. TO STA.

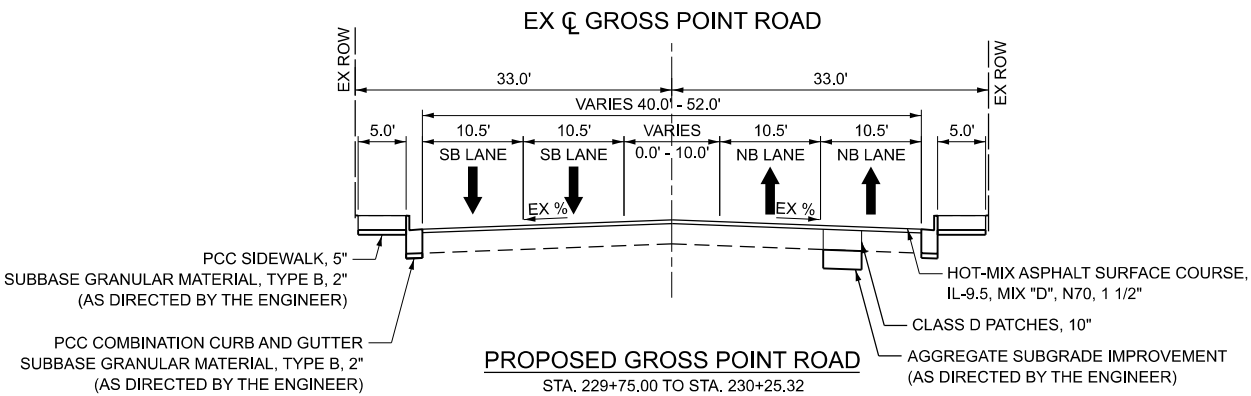
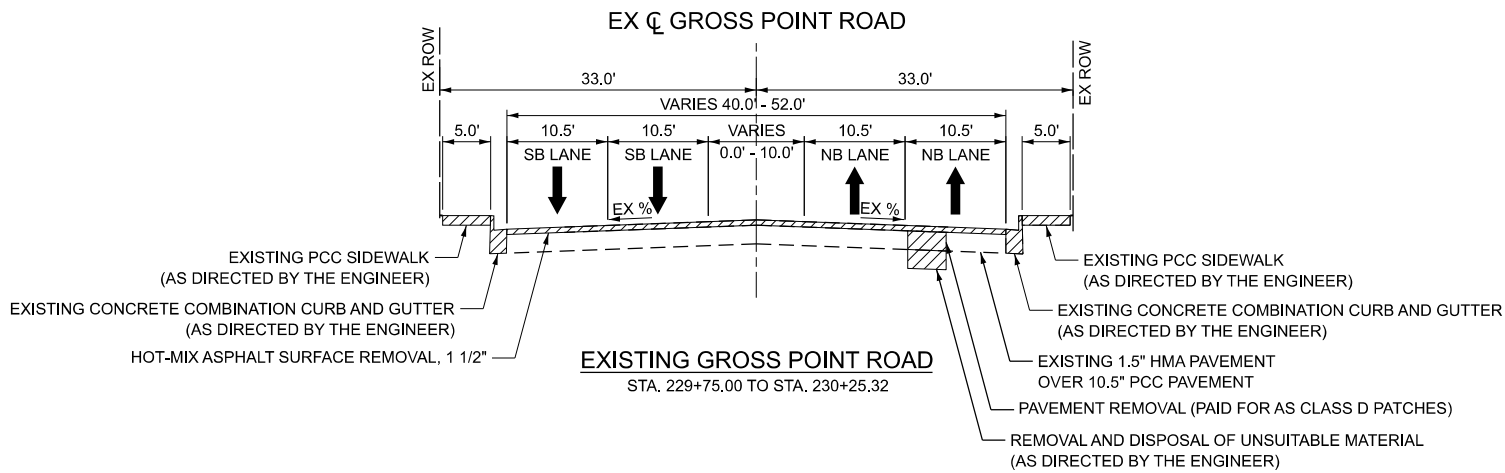
F.A.U. RTE.	SECTION	COUNTY	TOTAL SHEETS	SHEET NO.
3520	21-00110-00-RS	COOK	24	6
CONTRACT NO. 61L63				
ILLINOIS FED. AID PROJECT				

REMOVALS



HOT-MIX ASPHALT MIXTURE REQUIREMENTS		
MIXTURE TYPE		
PAVEMENT RESURFACING	AIR VOIDS	QMP
HOT-MIX ASPHALT SURFACE COURSE, IL-9.5, MIX "D", N70, 1 1/2"		
POLYMERIZED HOT-MIX ASPHALT BINDER COURSE, IL-4.75, N50, 3/4"	4% @ 70 GYR	LR 1030-2
PATCHING		
CLASS D PATCHES (HMA BINDER IL-19.0mm)	3.5% @ 50 GYR	LR 1030-2
	4% @ 70 GYR	LR 1030-2
QMP DESIGNATION: LOCAL QUALITY ASSURANCE / QUALITY MANAGEMENT QC/QA PER LR 1030-2		

- THE UNIT WEIGHT USED TO CALCULATE ALL HOT-MIX ASPHALT SURFACE MIXTURES QUANTITIES IS 112 LBS/SY YD/IN.
- THE "AC" FOR POLYMERIZED HMA MIXES SHALL BE "SBS/SBR PG 76-22" AND FOR NON-POLYMERIZED HMA THE "AC TYPE" SHALL BE "PG 64-22" UNLESS MODIFIED BY RECLAIMED MATERIAL SPECIFICATIONS.
- CONTRACTOR SHALL MILL BEFORE PATCHING.
- THE LONGITUDINAL JOINT SEALANT SHALL BE PLACED ON THE HMA BC IL-4.75 N50 FROM STA 201+28 TO STA 223+00, AND PLACED ON THE MILLED SURFACE FROM STA 223+00 TO STA 230+25.



 REMOVALS

DATE PLOTTED = 2/28/2025 1:36:33 PM
PEN TABLE =
PLOT CONFIG =
PLOT SCALE = 1" = 20'
PLOT DATE = 10/31/2024
PROJECT = 8725 W. Higgins Rd, Ste 600, Chicago, IL 60631
P 773.775.4009 | www.ciorba.com



USER NAME =	aham	DESIGNED -	AMH	REVISED -	
DRAWN -	AMH	REVISIED -			
PLOT SCALE =	1" = 20'	CHECKED -	EPS	REVISED -	
PLOT DATE =	10/31/2024	DATE -	2/28/2025	REVISED -	

STATE OF ILLINOIS
DEPARTMENT OF TRANSPORTATION

GROSS POINT ROAD LOCAL AGENCY FUNCTIONAL OVERLAY
TYPICAL SECTIONS

SCALE: 1" = 20' SHEET OF SHEETS STA. TO STA.

F.A.U. RTE.	SECTION	COUNTY	TOTAL SHEETS	SHEET NO.
3520	21-00110-00-RS	COOK	24	7
CONTRACT NO. 61L63				
ILLINOIS FED. AID PROJECT				

DATE PLOTTED = 3/17/2025 10:53:36 AM
PEN TABLE = proj.tbl
PLOT CONFIG = C:\P\proj\plctg
FILE NAME = p:\proj\grosspoint\grosspoint.dwg
PROJECT = 21-00110-00-RS
SHEET = 24 OF 24
DRAWN BY = JAH
CHECKED BY = EPS
DATE = 3/17/2025



USER NAME	= aharn
DESIGNED	- AMH
DRAWN	- AMH
CHECKED	- EPS
DATE	- 3/17/2025
PLOT SCALE	= 1" = 20'
PLOT DATE	= 10/25/2024

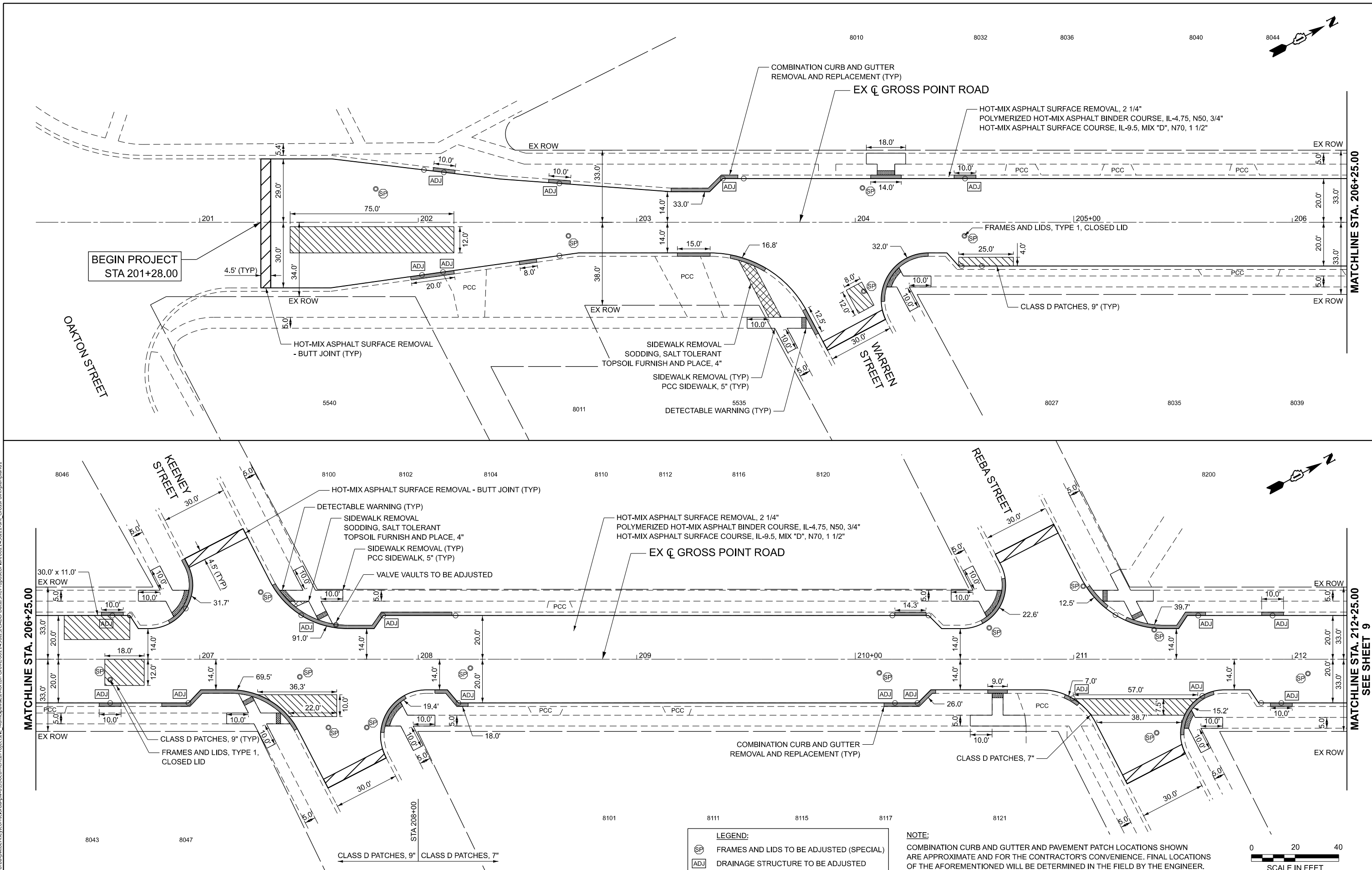
REVISED	-
REVISED	-
REVISED	-
REVISED	-

STATE OF ILLINOIS
DEPARTMENT OF TRANSPORTATION

GROSS POINT ROAD LOCAL AGENCY FUNCTIONAL OVERLAY
PROPOSED PLAN

SCALE: 1" = 20' SHEET OF SHEETS STA. 200+25.00 TO STA. 212+25.00

F.A.U. RTE.	SECTION	COUNTY	TOTAL SHEETS	SHEET NO.
3520	21-00110-00-RS	COOK	24	8
CONTRACT NO. 61L63				
ILLINOIS FED. AID PROJECT				



DATE PLOTTED = 2/28/2025 1:36:45 PM
PEN TABLE = prof.tbl
PLOT CONFIG = DOT_PDF_Netlayer_BW.ctb
FILE NAME = Proj\GrossPointRoad\Drawings\ProposedPlan\021456.22.dwg
FILE NAME = Proj\GrossPointRoad\Drawings\ProposedPlan\021456.22.dwg



USER NAME = aham
DESIGNED - AMH
DRAWN - AMH
PLOT SCALE = 1" = 20'
CHECKED - EPS
PLOT DATE = 10/25/2024
DATE - 2/28/2025

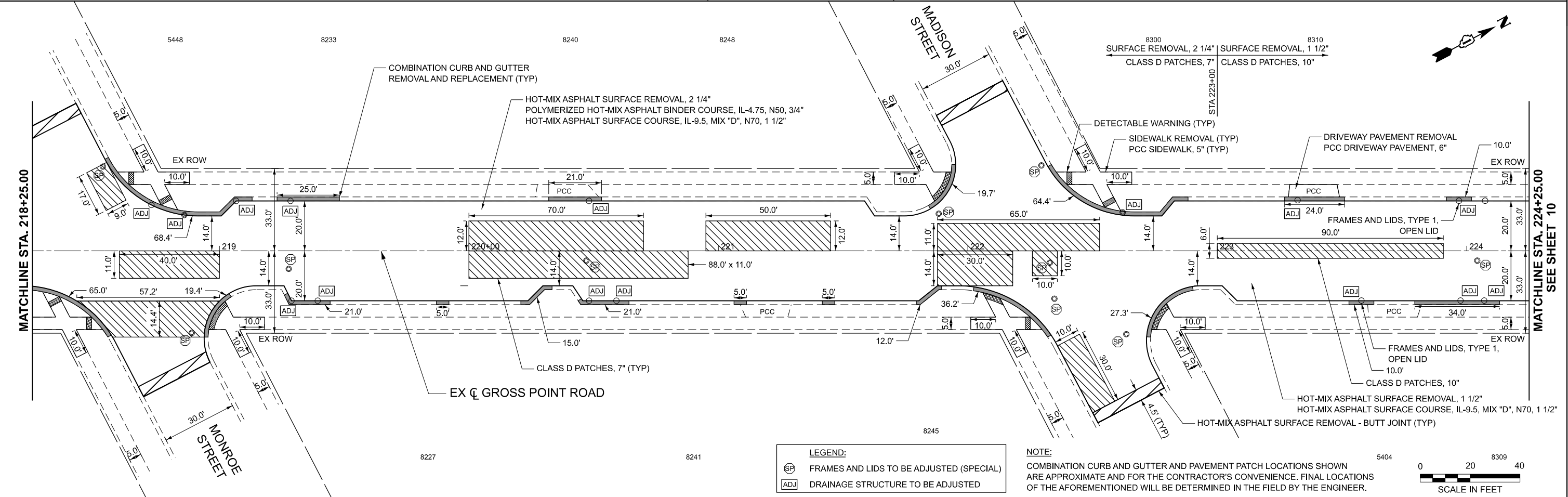
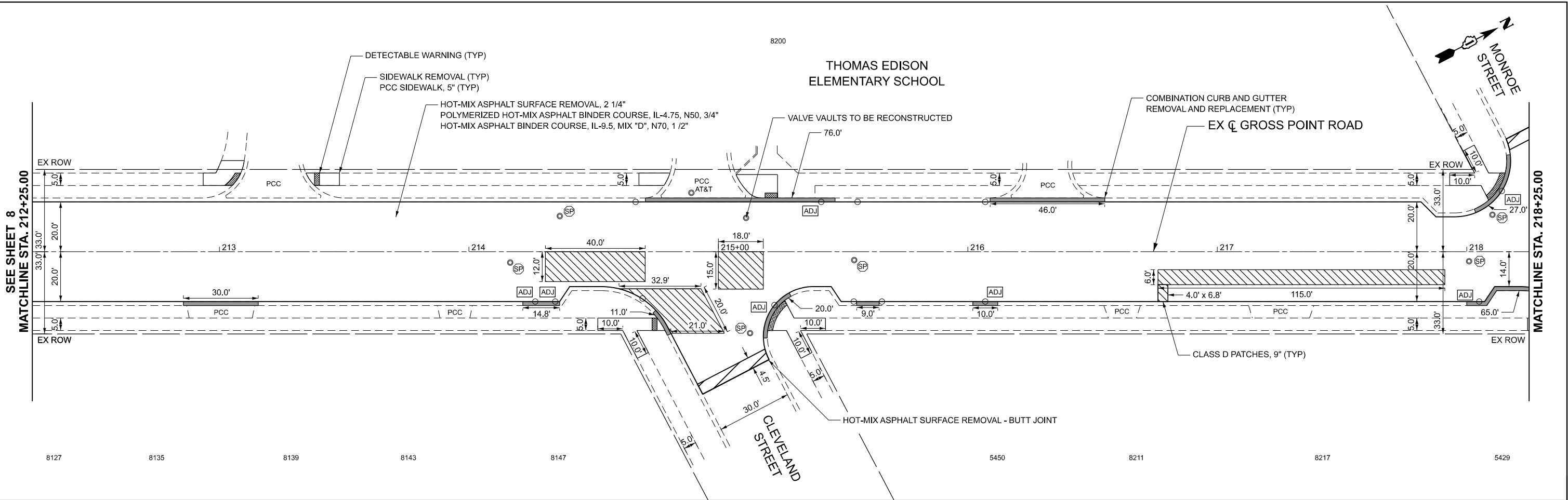
REVISD -
REVISD -
REVISD -
REVISD -

STATE OF ILLINOIS
DEPARTMENT OF TRANSPORTATION

GROSS POINT ROAD LOCAL AGENCY FUNCTIONAL OVERLAY
PROPOSED PLAN

SCALE: 1" = 20' SHEET OF SHEETS STA. 212+25.00 TO STA. 224+25.00

F.A.U. RTE.	SECTION	COUNTY	TOTAL SHEETS	SHEET NO.
3520	21-00110-00-RS	COOK	24	9
CONTRACT NO. 61L63				
ILLINOIS FED. AID PROJECT				



LEGEND:	
SP	FRAMES AND LIDS TO BE ADJUSTED (SPECIAL)
ADJ	DRAINAGE STRUCTURE TO BE ADJUSTED

NOTE:
COMBINATION CURB AND GUTTER AND PAVEMENT PATCH LOCATIONS SHOWN ARE APPROXIMATE AND FOR THE CONTRACTOR'S CONVENIENCE. FINAL LOCATIONS OF THE AFOREMENTIONED WILL BE DETERMINED IN THE FIELD BY THE ENGINEER.



STAGING AND TRAFFIC SEQUENCE OF CONSTRUCTION

- STAGE 1
- CONSTRUCTION
1. REMOVE EXISTING CURB AND GUTTER AND SIDEWALK ALONG THE EAST SIDE OF GROSS POINT ROAD.
 2. DRAINAGE STRUCTURES WITHIN CURB REMOVAL LIMITS TO BE ADJUSTED.
 3. FRAME AND POUR NEW CURB AND GUTTER AND SIDEWALK ALONG THE EAST SIDE OF GROSS POINT ROAD.
- TRAFFIC CONTROL
1. MAINTAIN TRAFFIC UTILIZING STANDARDS 701427, 701501, 701606, 701701 and 701801
 2. WORK AT ENTRANCES / ALLEYS WILL BE GAPPED TO ALLOW ACCESS FOR RESIDENTS.
- STAGE 2
- CONSTRUCTION
1. REMOVE EXISTING CURB AND GUTTER AND SIDEWALK ALONG THE WEST SIDE OF GROSS POINT ROAD.
 2. DRAINAGE STRUCTURES WITHIN CURB REMOVAL LIMITS TO BE ADJUSTED.
 3. FRAME AND POUR NEW CURB AND GUTTER AND SIDEWALK ALONG THE WEST SIDE OF GROSS POINT ROAD.
- TRAFFIC CONTROL
1. MAINTAIN TRAFFIC UTILIZING STANDARDS 701427, 701501, 701606, 701701 and 701801
 2. WORK AT ENTRANCES / ALLEYS WILL BE GAPPED TO ALLOW ACCESS FOR RESIDENTS.
- STAGE 3
- CONSTRUCTION
1. STRUCTURES WITHIN MAINLINE GROSS POINT ROAD WILL BE LOWERED PER IDOT D1 DETAIL BD-08.
 2. MILL GROSS POINT ROAD.
 3. APPLY TEMPORARY PAVEMENT MARKINGS.
- TRAFFIC CONTROL
1. MAINTAIN TRAFFIC UTILIZING STANDARDS 701311, 701427, 701501, 701606, 701701 and 701801

- STAGE 4
- CONSTRUCTION
1. PAVEMENT PATCHING
 2. STRUCTURES WITHIN MAINLINE GROSS POINT ROAD TO BE ADJUSTED.
- TRAFFIC CONTROL
1. MAINTAIN TRAFFIC UTILIZING STANDARDS 701311, 701427, 701501, 701606, 701701 and 701801
- STAGE 5
- CONSTRUCTION
1. PAVE BINDER COURSE.
 2. PAVE SURFACE COURSE.
 3. ESTABLISH PERMANENT PAVEMENT MARKINGS.
- TRAFFIC CONTROL
1. MAINTAIN TRAFFIC UTILIZING STANDARDS 701311, 701427, 701501, 701606, 701701 and 701801

DATE PLOTTED = 3/17/2025 10:54:53 AM
PEN TABLE = proj.tbl
PLOT CONFIG = C:\P\0\p\cfig
PROJECT NAME = 21-001110-00-RS
FILE NAME = 21-001110-00-RS-01\Drawings\Project\21-001110-00-RS-01-GrossPoint.pnk01



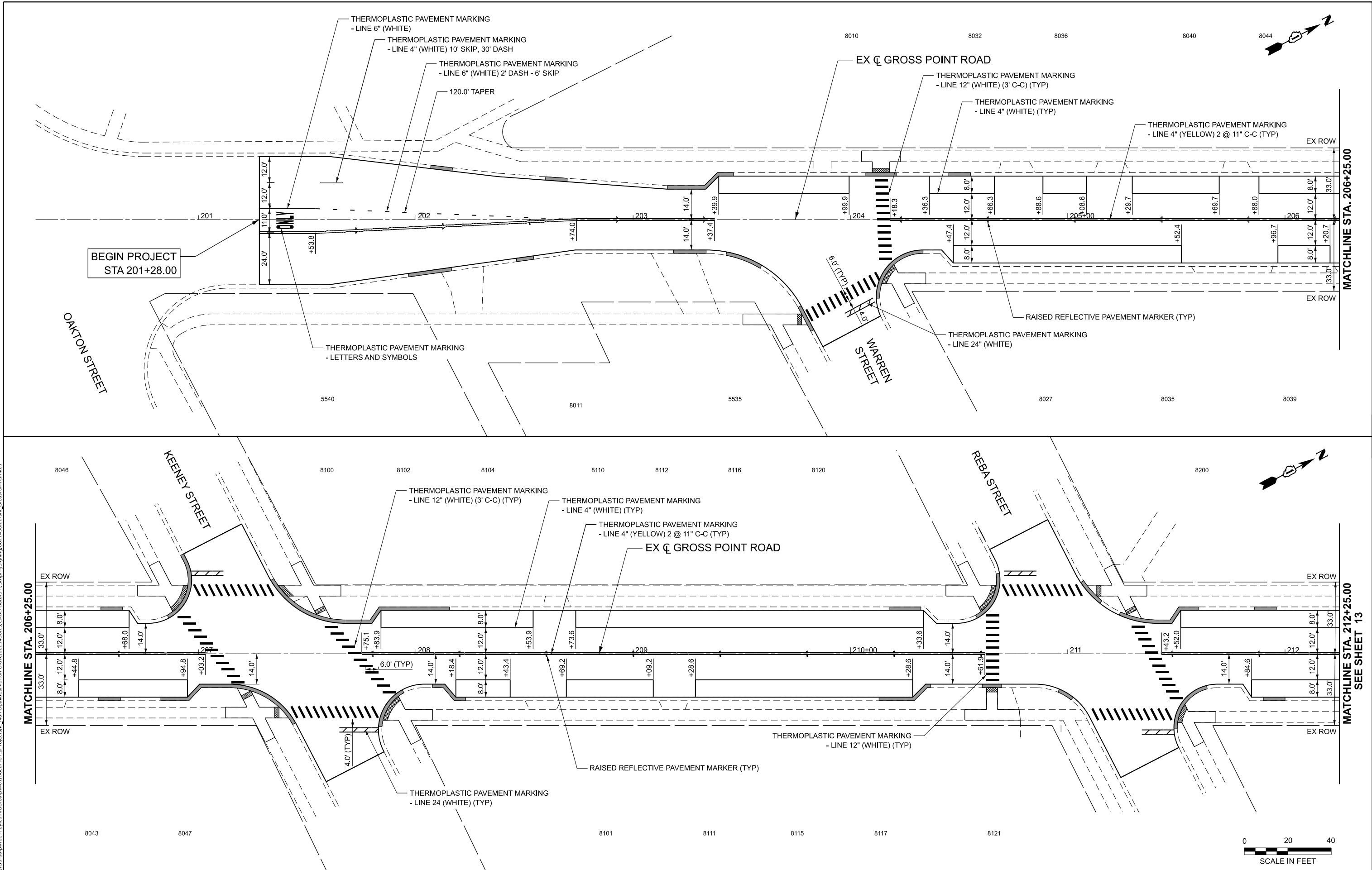
USER NAME	= aharn	DESIGNED	- AMH	REVISED	-
DRAWN	- AMH	REVIS	-	REVIS	-
PLOT SCALE	= 1" = 20'	CHECKED	- EPS	REVIS	-
PLOT DATE	= 10/25/2024	DATE	- 3/17/2025	REVIS	-

STATE OF ILLINOIS
DEPARTMENT OF TRANSPORTATION

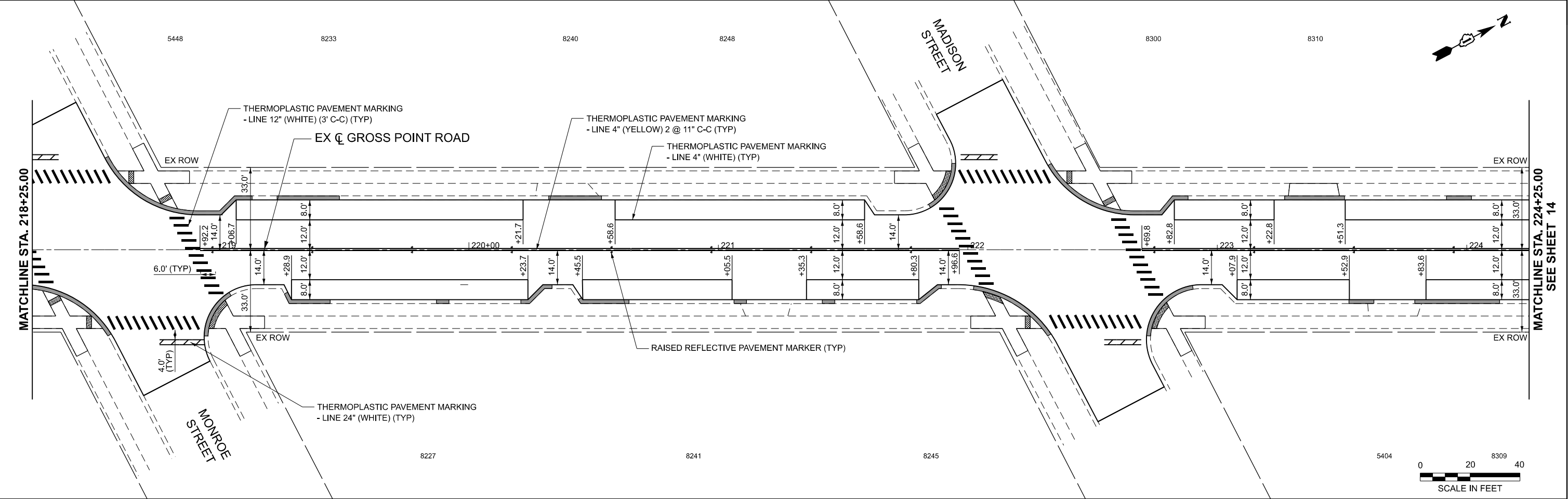
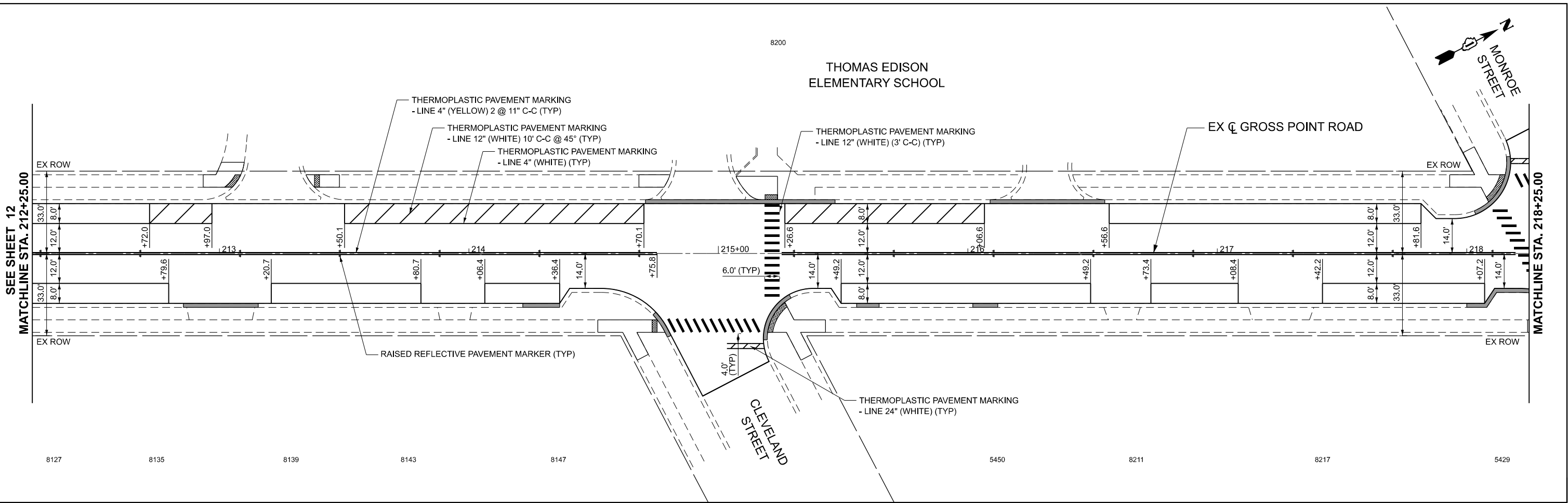
GROSS POINT ROAD LOCAL AGENCY FUNCTIONAL OVERLAY
PAVEMENT MARKING PLAN

SCALE: 1" = 20' SHEET OF SHEETS STA. 200+25.00 TO STA. 212+25.00

F.A.U. RTE.	SECTION	COUNTY	TOTAL SHEETS	SHEET NO.
3520	21-00110-00-RS	COOK	24	12
CONTRACT NO. 61L63				
ILLINOIS FED. AID PROJECT				

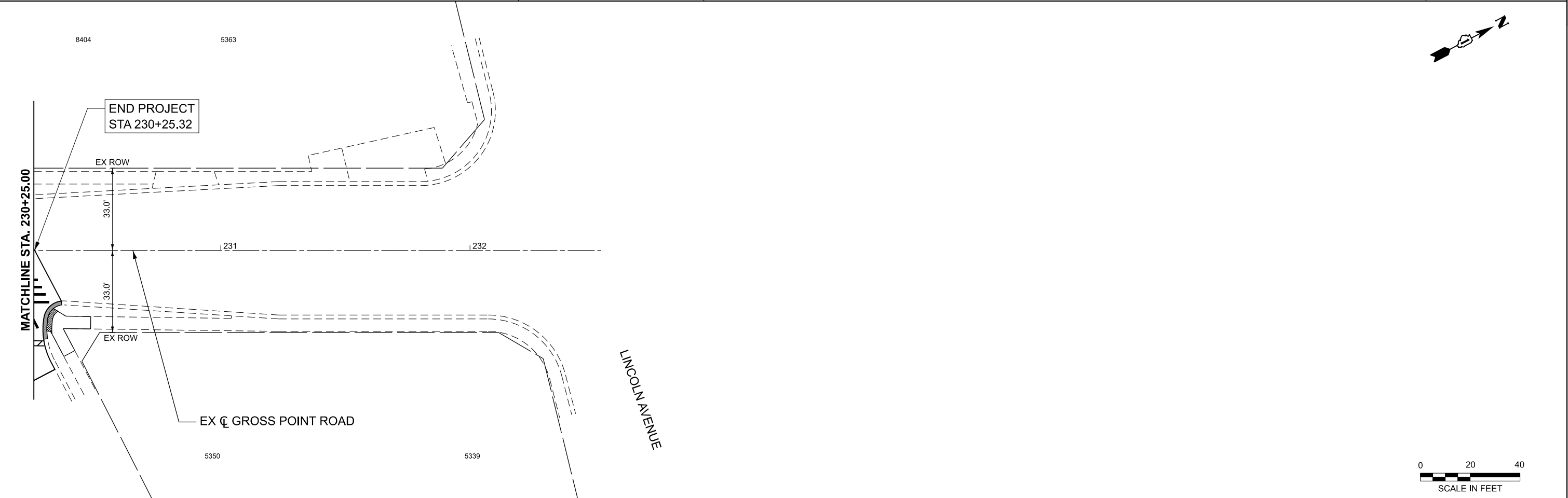
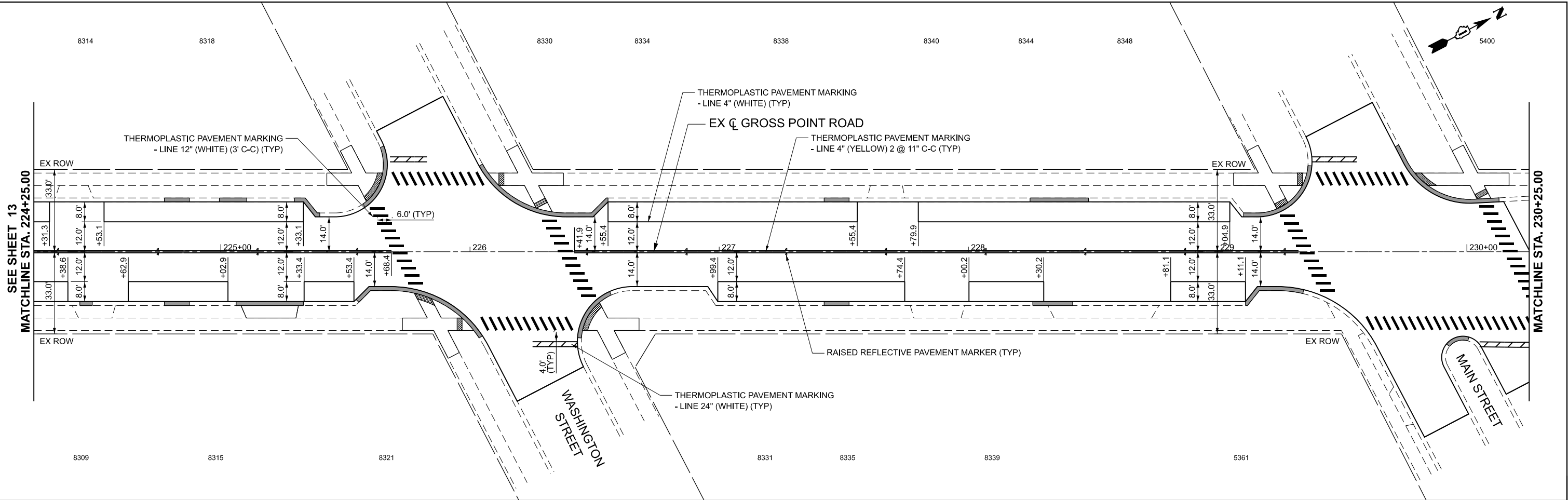


DATE PLOTTED = 2/28/2025 1:37:10 PM
PEN TABLE = prof.tbl
PLOT CONFIG = IDOT_PDF_Nlayers_BW.ctb
FILE NAME = C:\Users\jacob\Documents\Projects\Illinois\Monroe\GrossPoint\GrossPoint.mxd
FILE NAME = C:\Users\jacob\Documents\Projects\Illinois\Monroe\GrossPoint\GrossPoint.mxd



 <div>8725 W. Higgins Rd, Ste 600, Chicago, IL 60631 P 773.775.4009 www.ciorba.com</div>	USER NAME = aham		DESIGNED - AMH	REVISED -	STATE OF ILLINOIS DEPARTMENT OF TRANSPORTATION		GROSS POINT ROAD LOCAL AGENCY FUNCTIONAL OVERLAY PAVEMENT MARKING PLAN				F.A.U. RTE.	SECTION	COUNTY	TOTAL SHEETS	SHEET NO.
	PLOT SCALE = 1" = 20'		DRAWN - AMH	REVISED -			SCALE: 1" = 20'				3520	21-00110-00-RS	COOK	24	13
	PLOT DATE = 10/25/2024		CHECKED - EPS	REVISED -			SHEET OF SHEETS				CONTRACT NO. 61L63				
			DATE - 2/28/2025	REVISED -			STA. 212+25.00 TO STA. 224+25.00				ILLINOIS FED. AID PROJECT				

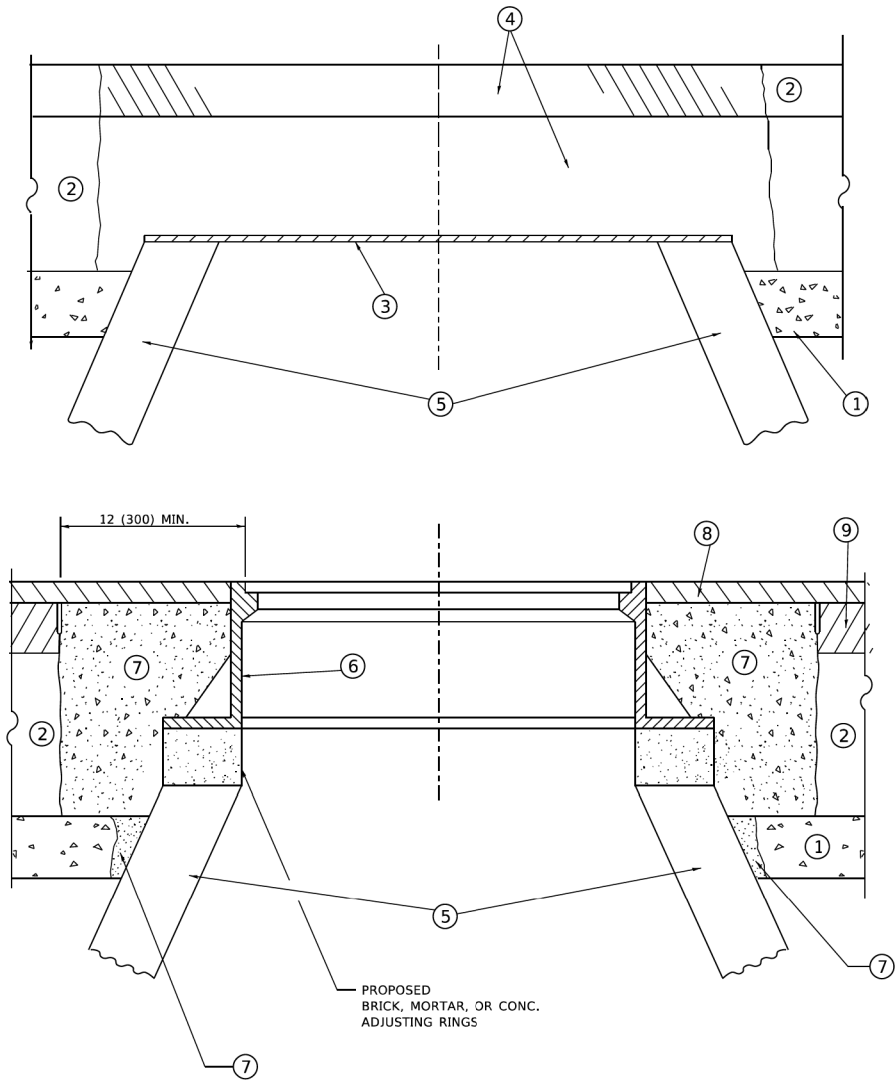
DATE PLOTTED = 2/28/2025 1:37:17 PM
PEN TABLE = prof.tbl
PLOT CONFIG = IDOT_PDF_Netlayer_BW.ctb
FILE NAME = procoradwubentley.comcorbacw401\Documents\Projects\ILL_Municipal\Hickory\Hickory\0021456.23\CADD Data\SHV\Shading\Signing\0021456.23-shl_GrossPntmplan03



 8725 W. Higgins Rd, Ste 600, Chicago, IL 60631 P 773.775.4009 www.ciorba.com	USER NAME = aham	DESIGNED - AMH	REVISED -	STATE OF ILLINOIS DEPARTMENT OF TRANSPORTATION	GROSS POINT ROAD LOCAL AGENCY FUNCTIONAL OVERLAY				F.A.U. RTE. 3520	SECTION 21-00110-00-RS	COUNTY COOK	TOTAL SHEETS 24	SHEET NO. 14
	PLOT SCALE = 1" = 20'	CHECKED - EPS	REVISED -		PAVEMENT MARKING PLAN				CONTRACT NO. 61L63				
	PLOT DATE = 10/25/2024	DATE - 2/28/2025	REVISED -		SCALE: 1" = 20'	SHEET OF SHEETS	STA. 224+25.00 TO STA. 236+25.00	ILLINOIS FED. AID PROJECT					

DATE PLOTTED = 2/28/2025 1:37:23 PM
PEN TABLE = 2/28/2025 1:37:23 PM
PLOT CONFIG = DOT_PDF_NetLayer_BW.ctb
FILE NAME = C:\Users\aham\OneDrive\Documents\Projects\Illinois\Gross Point Road Local Agency Functional Overlay\District One Details\BD-08.dgn
FILE NAME = C:\Users\aham\OneDrive\Documents\Projects\Illinois\Gross Point Road Local Agency Functional Overlay\District One Details\BD-08.dgn

MODEL: Default
FILE NAME: W:\d15180\22x34\bd08.dgn



DETAILS FOR FRAMES AND LIDS ADJUSTMENT WITH MILLING

NOTES

- EXISTING BROKEN FRAMES AND LIDS SHALL BE REMOVED AND DISPOSED OF BY THE CONTRACTOR AND SHALL BE REPLACED AS DIRECTED BY THE ENGINEER. REPLACEMENT FRAMES AND LIDS WILL BE PAID FOR IN ACCORDANCE WITH ARTICLE 109.04 OF THE STANDARD SPECIFICATIONS UNLESS A SEPARATE PAY ITEM HAS BEEN PROVIDED.
- IF THE EXISTING LIDS ARE OPEN, THE FRAME WILL BE ADJUSTED TO THE ELEVATION OF THE MILLED PAVEMENT SURFACE PRIOR TO THE MILLING OPERATION. THE FRAME WILL NOT BE REMOVED AND COVERED BY THE METAL PLATE.
- CITY OF CHICAGO CASTINGS ARE THE PROPERTY OF THE CITY AND THE CONTRACTOR SHALL NOTIFY THE CITY FOR REMOVAL AND DISPOSITION OF THE CASTINGS.
- THE METAL PLATE USED TO COVER THE STRUCTURE SHALL REMAIN THE PROPERTY OF THE CONTRACTOR.
- THE CONTRACTOR SHALL REMOVE ALL TRAFFIC CONTROL DEVICES BY THE END OF EACH WORK SHIFT.

CONSTRUCTION PROCEDURES

STAGE 1 (BEFORE PAVEMENT MILLING)

- REMOVE A MINIMUM OF 12 (300) OF THE PAVEMENT FROM AROUND THE STRUCTURE.
- REMOVE THE EXISTING FRAME AND LID FROM THE STRUCTURE.
- COVER THE STRUCTURE OPENING WITH A 36 (900) DIAMETER METAL PLATE.
- BACKFILL WITH CRUSHED STONE AND HMA SURFACE MIX APPROVED BY THE ENGINEER. (MIN. 3 (80) HMA TO REMAIN AFTER MILLING).

STAGE 2 (AFTER PAVEMENT MILLING)

- REMOVE THE HMA SURFACE MIX AND CRUSHED STONE.
- INSTALL THE FRAME AND LID; ADJUST THE FRAME TO ITS FINAL SURFACE ELEVATION.
- THE SURROUNDING SPACE SHALL BE FILLED WITH CLASS PP-2* CONCRETE TO THE ELEVATION OF THE SURFACE OF THE EXISTING BASE COURSE OR THE BINDER COURSE.

*UNLESS OTHERWISE SPECIFIED IN THE PLANS.

THE PROCEDURE EXPLAINED ABOVE SHALL CONFORM TO THE APPLICABLE PORTIONS OF SECTIONS 353, 406, 602, AND 603 OF THE STANDARD SPECIFICATIONS EXCEPT THAT "THE CONTRACTOR SHALL ADJUST THE STRUCTURES TO THE FINISHED PAVEMENT ELEVATION NO MORE THAN 5 CALENDAR DAYS PRIOR TO PLACEMENT OF THE FINAL LIFT OF SURFACE UNLESS APPROVED BY THE ENGINEER."

LEGEND

- | | |
|--|-------------------------------|
| ① SUB-BASE GRANULAR MATERIAL | ⑥ FRAME AND LID (SEE NOTES) |
| ② EXISTING PAVEMENT | ⑦ CLASS PP-2* CONCRETE |
| ③ 36 (900) DIAMETER METAL PLATE | ⑧ PROPOSED HMA SURFACE COURSE |
| ④ PROPOSED CRUSHED STONE AND HMA SURFACE MIX | ⑨ PROPOSED HMA BINDER COURSE |
| ⑤ EXISTING STRUCTURE | |

LOCATION OF STRUCTURES

THE CONTRACTOR WILL BE REQUIRED TO KEEP A RECORD OF THE LOCATIONS OF THE BURIED STRUCTURES ACCORDING TO THE STATION AND DISTANCE LEFT OR RIGHT OF THE CENTERLINE OF PAVEMENT. UPON COMPLETION OF THE WORK, THE CONTRACTOR WILL DELIVER THE RECORD TO THE ENGINEER.

BASIS OF PAYMENT

- REMOVING FRAMES AND LIDS ON DRAINAGE AND UTILITY STRUCTURES IN THE PAVEMENT PRIOR TO MILLING, AND ADJUSTING TO FINAL GRADE PRIOR TO PLACING THE SURFACE COURSE, WILL BE PAID FOR AT THE CONTRACT UNIT PRICE EACH FOR "FRAMES AND LIDS TO BE ADJUSTED (SPECIAL)."
- THIS WORK WILL NOT BE PAID FOR WHEN DRAINAGE AND UTILITY STRUCTURES ARE SPECIFIED FOR PAYMENT AS STRUCTURE RECONSTRUCTION.
- NEW FRAMES AND LIDS, WHEN SPECIFIED, WILL BE PAID FOR SEPARATELY.
- WHEN STRUCTURES ARE TO BE ADJUSTED OR RECONSTRUCTED, THE LOWERING AND RAISING OF THE FRAMES AND LIDS WILL NOT BE PAID FOR SEPARATELY BUT WILL BE INCLUDED IN THE COST OF THE CORRESPONDING PAY ITEM.

ALL DIMENSIONS ARE IN INCHES (MILLIMETERS) UNLESS OTHERWISE SHOWN

		USER NAME = Lawrence,DeManche	DESIGNED - R. SHAH	REVISED - R. BORO 03-09-11	STATE OF ILLINOIS DEPARTMENT OF TRANSPORTATION	DETAILS FOR FRAMES AND LIDS ADJUSTMENT WITH MILLING				F.A. RTE.	SECTION	COUNTY	TOTAL SHEETS	SHEET NO.
		DRAWN -	DRAWN -	REVISED - R. BORO 12-06-11										
		PLOT SCALE = 100.0000' / in.	CHECKED -	REVISED - K. SMITH 11-18-22		BD600-03 (BD-08)		CONTRACT NO.						
		PLOT DATE = 9/15/2023	DATE - 10-25-94	REVISED - K. SMITH 09-15-23		ILLINOIS FED. AID PROJECT								
		SCALE: NONE			SHEET 1	OF 1	SHEETS	STA.	TO STA.					

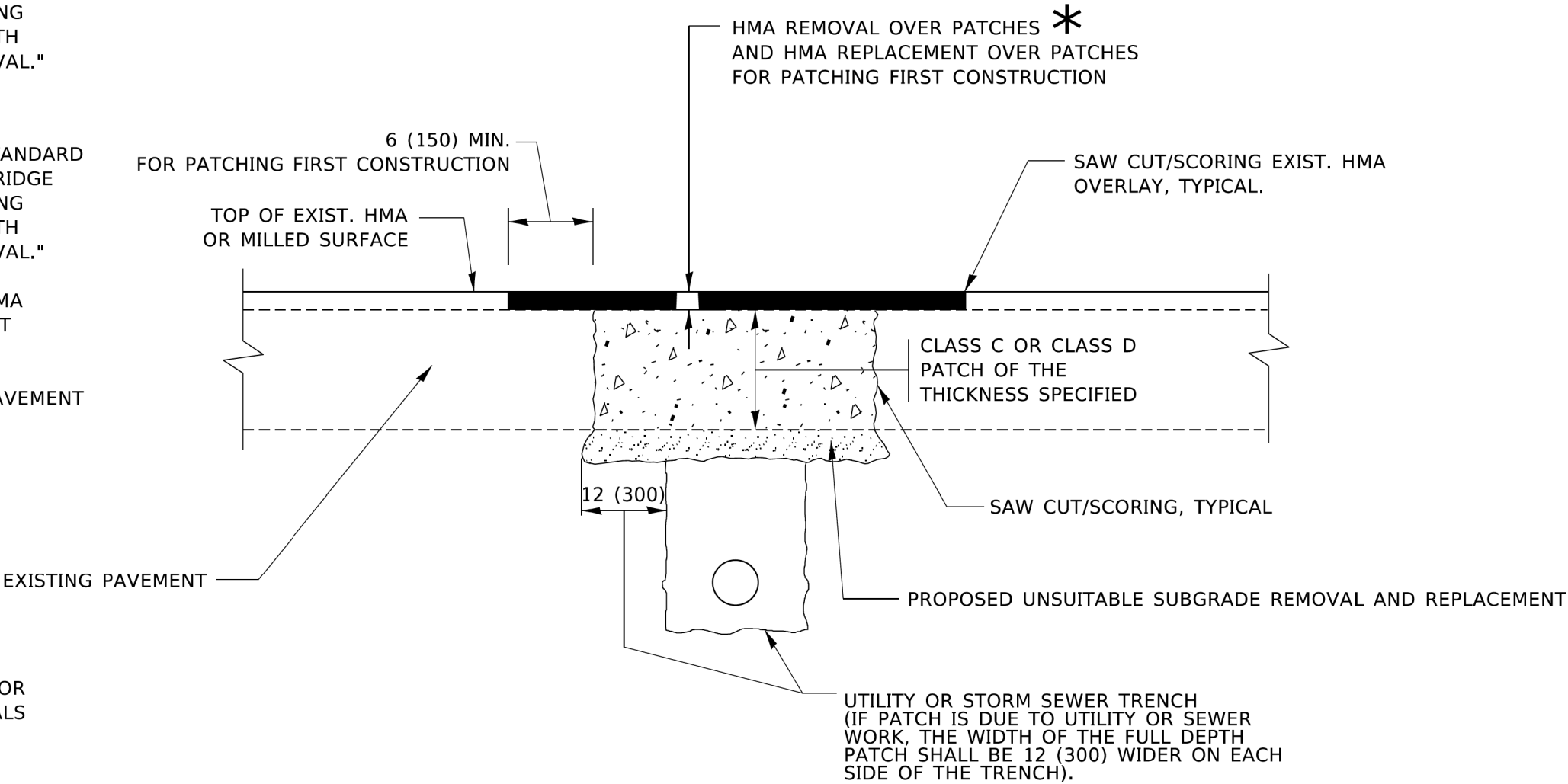
<div>CGroup</div> <div>Chicago, IL 60631</div> <div>ciorba.com</div>	USER NAME = aham	DESIGNED - AMH	REVISED -	STATE OF ILLINOIS DEPARTMENT OF TRANSPORTATION	GROSS POINT ROAD LOCAL AGENCY FUNCTIONAL OVERLAY DISTRICT ONE DETAILS - BD-08				F.A.U. RTE.	SECTION	COUNTY	TOTAL SHEETS	SHEET NO.
	DRAWN - AMH	DRAWN -	REVISED -						3520	21-00110-00-RS	COOK	24	15
	PLOT SCALE = 1" = 20'	CHECKED - EPS	REVISED -		CONTRACT NO. 61L63								
	PLOT DATE = 10/31/2024	DATE - 2/28/2025	REVISED -		ILLINOIS FED. AID PROJECT								
	SCALE: NTS				SHEET	OF	SHEETS	STA.	TO STA.				

METHOD OF MEASUREMENT

REFER TO SECTION 442 OF THE STANDARD SPECIFICATIONS FOR ROAD AND BRIDGE CONSTRUCTION AND THE RECURRING SPECIAL PROVISION "PATCHING WITH HOT-MIX ASPHALT OVERLAY REMOVAL."

BASIS OF PAYMENT

- 1. REFER TO SECTION 442 OF THE STANDARD SPECIFICATIONS FOR ROAD AND BRIDGE CONSTRUCTION AND THE RECURRING SPECIAL PROVISION "PATCHING WITH HOT-MIX ASPHALT OVERLAY REMOVAL."
- 2. SAW CUT/SCORING OF EXISTING HMA OVERLAY IS INCLUDED IN THE COST OF PAVEMENT PATCHING.
- 3. SAW CUT/SCORING OF EXISTING PAVEMENT IS INCLUDED IN THE COST OF PAVEMENT PATCHING.



SEQUENCE OF CONSTRUCTION (PATCHING FIRST)

- 1. REMOVE THE EXISTING HMA MATERIAL OVER THE AREA TO BE PATCHED.
- 2. REMOVE AND REPLACE WITH CLASS C OR D PATCH.
- 3. REPLACE HMA MATERIAL OVER THE AREA TO BE PATCHED.

SEQUENCE OF CONSTRUCTION (MILLING FIRST)

- 1. MILL HMA FIRST IF THERE IS AT LEAST 4½ INCHES OR MORE OF HMA MATERIAL ON TOP OF THE EXISTING PAVEMENT OR IF THE PAVEMENT IS FULL DEPTH HMA. A MINIMUM OF 2 INCHES OF HMA MATERIAL SHALL BE IN PLACE AFTER MILLING.
- 2. REMOVE AND REPLACE WITH FULL DEPTH CLASS D PATCHES TO TOP OF MILLED SURFACE.

ALL DIMENSIONS ARE IN INCHES (MILLIMETERS) UNLESS OTHERWISE SHOWN.

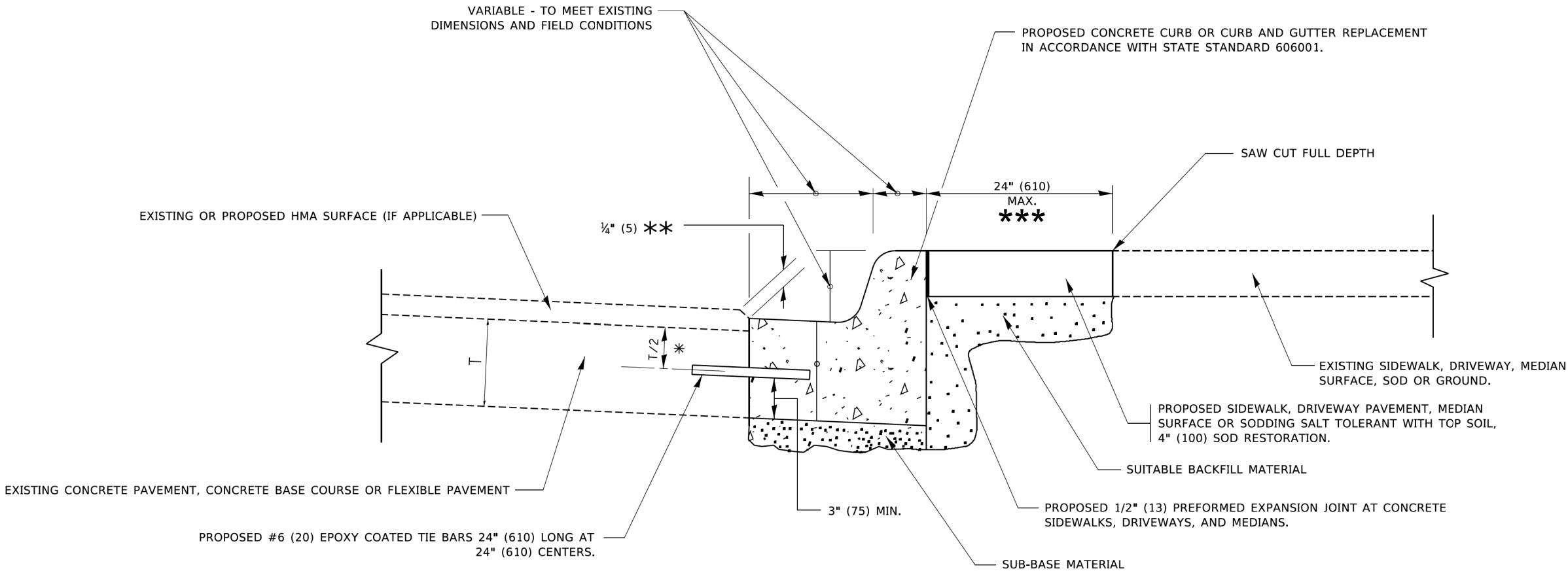
	USER NAME = Lawrence,DeManche	DESIGNED - R. SHAH	REVISED - R. BORO 01-01-07	STATE OF ILLINOIS DEPARTMENT OF TRANSPORTATION	PAVEMENT PATCHING FOR HMA SURFACED PAVEMENT	SCALE: NONE	SHEET 1 OF 1 SHEETS	STA. TO STA.	F.A.U. RTE.	SECTION	COUNTY	TOTAL SHEETS	SHEET NO.
		DRAWN -	REVISED - R. BORO 09-04-07										
	PLOT SCALE = 100.0000' / In.	CHECKED -	REVISED - K. ENG 10-27-08						BD400-04 (BD-22)				
	PLOT DATE = 11/18/2022	DATE - 10-25-94	REVISED - K. SMITH 11-18-22										

USER NAME = aham	DESIGNED - AMH	REVISED -
	DRAWN - AMH	REVISED -
PLOT SCALE = 1" = 20'	CHECKED - EPS	REVISED -
PLOT DATE = 10/31/2024	DATE - 2/28/2025	REVISED -

F.A.U. RTE.	SECTION	COUNTY	TOTAL SHEETS	SHEET NO.
3520	21-00110-00-RS	COOK	24	16
CONTRACT NO. 61L63				
ILLINOIS FED. AID PROJECT				

DATE PLOTTED = 2/28/2025 1:37:38 PM
PEN TABLE = prof#.tbl
PLOT CONFIG = DOT_PDF_Nlayers_BW.plt
FILE NAME = C:\Users\aham\OneDrive\Documents\Projects\Illinois\Gross Point Road Local Agency Functional Overlay\District One Details\BD-24.dgn
FILE NAME = C:\Users\aham\OneDrive\Documents\Projects\Illinois\Gross Point Road Local Agency Functional Overlay\District One Details\BD-24.dgn

MODEL: Default
FILE NAME: p:\projects\dot\illinois\gross point road local agency functional overlay\district one details\bd-24.dgn



- * 3" (75) MINIMUM FROM TOP AND BOTTOM OF THE CONCRETE PAVEMENT OR BASE COURSE.
- ** IF THE FINAL SURFACE OF THE PAVEMENT IS CONCRETE, THE GUTTER IS TO BE FLUSH WITH THE PAVEMENT.
- *** DRIVEWAY PAVEMENT RESTORATION WILL BE A MAXIMUM WIDTH OF 36"

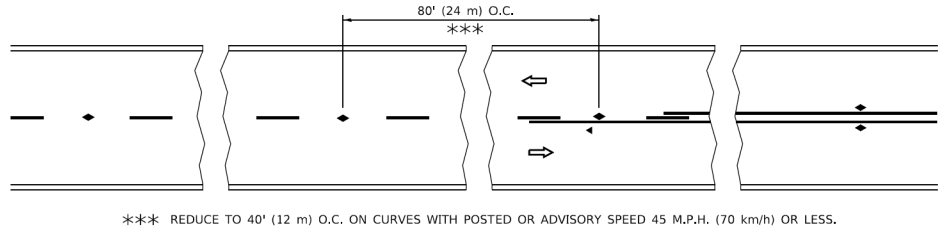
CURB OR CURB AND GUTTER REMOVAL AND REPLACEMENT

ALL DIMENSIONS ARE IN INCHES (MILLIMETERS) UNLESS OTHERWISE SHOWN.

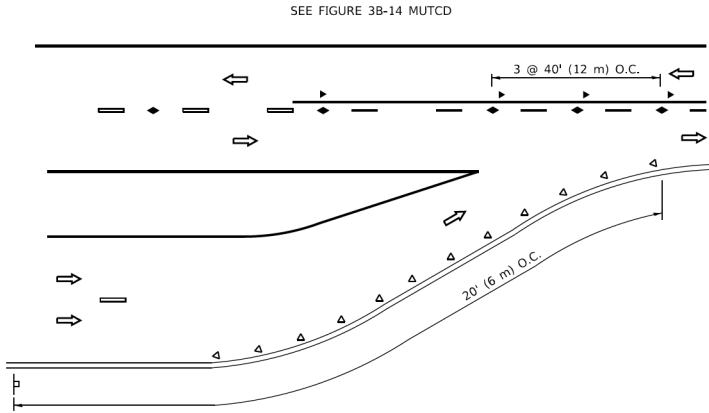
	USER NAME = aham	DESIGNED - AMH	REVISED -	STATE OF ILLINOIS DEPARTMENT OF TRANSPORTATION	CURB OR CURB AND GUTTER REMOVAL AND REPLACEMENT	SCALE: NONE	SHEET 1 OF 1 SHEETS	STA. TO STA.	F.A.U. RTE.	SECTION	COUNTY	TOTAL SHEETS	SHEET NO.
		DRAWN - AMH	REVISED -										
	PLOT SCALE = 1" = 20'	CHECKED - EPS	REVISED -						BD600-06 (BD-24)				
	PLOT DATE = 10/31/2024	DATE - 2/28/2025	REVISED -						ILLINOIS	FED. AID PROJECT			
 8725 W. Higgins Rd, Ste 600, Chicago, IL 60631 P 773.775.4009 www.ciorba.com	USER NAME = aham	DESIGNED - AMH	REVISED -	STATE OF ILLINOIS DEPARTMENT OF TRANSPORTATION	GROSS POINT ROAD LOCAL AGENCY FUNCTIONAL OVERLAY DISTRICT ONE DETAILS - BD-24	SCALE: NTS	SHEET OF SHEETS	STA. TO STA.	F.A.U. RTE.	SECTION	COUNTY	TOTAL SHEETS	SHEET NO.
		DRAWN - AMH	REVISED -										
	PLOT SCALE = 1" = 20'	CHECKED - EPS	REVISED -						3520	21-00110-00-RS	COOK	24	17
	PLOT DATE = 10/31/2024	DATE - 2/28/2025	REVISED -						ILLINOIS	FED. AID PROJECT			

DATE PLOTTED = 2/28/2025 1:38:02 PM
PEN TABLE = prof#_tbl
PLOT CONFIG = DOT_PDF_Nlayers_BW.ctb
FILE NAME = C:\Users\aham\OneDrive\Documents\Projects\Illinois\Projects\TC-11\Details\0021456.23\CAODD Data\SH\Details\0021456.23-shd01-TC11.dgn

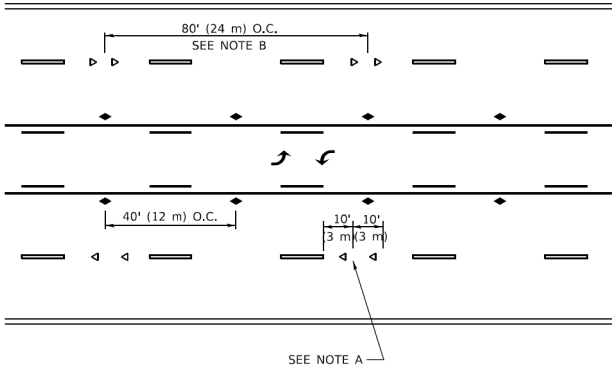
MODEL: Default
FILE NAME: p:\04\BID\ITEG_Illinois\pwr\PWIDOT\Documents\DOT Office\Detail\1\Projects\Details\022-34\CAODD\CAODD sheets\TC11.dgn



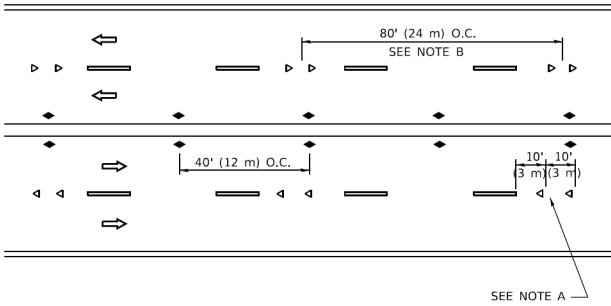
TWO-LANE/TWO-WAY



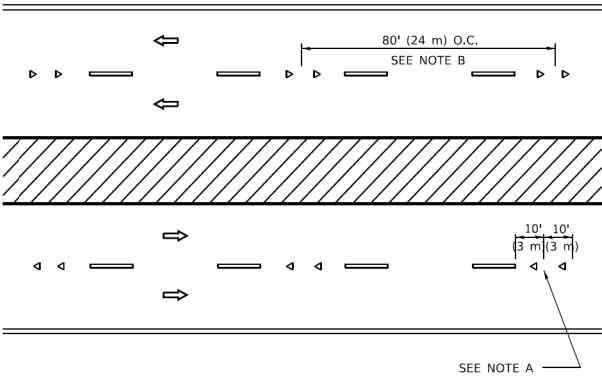
LANE REDUCTION TRANSITION



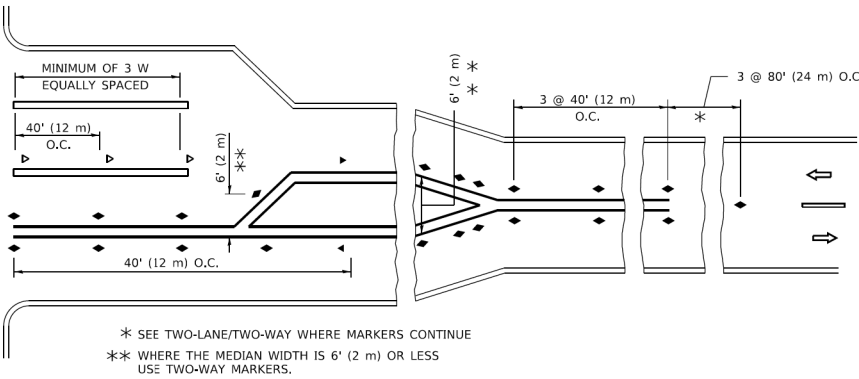
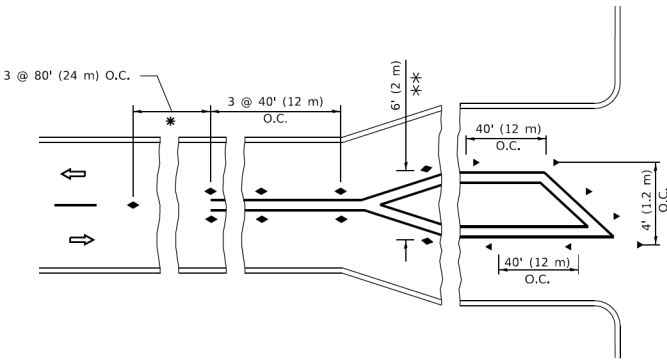
TWO-WAY LEFT TURN



MULTI-LANE/UNDIVIDED



MULTI-LANE/DIVIDED



TURN LANES

GENERAL NOTES

- MARKERS USED WITH DASHED LINES SHALL BE CENTERED IN THE GAP BETWEEN SEGMENTS.
- MARKERS USED ADJACENT TO SOLID LINES SHALL BE OFFSET 2 TO 3 (50 TO 75) TOWARD TRAFFIC AS SHOWN.
- MARKERS THROUGH TANGENTS LESS THAN 500' (150 m) IN LENGTH BETWEEN CURVES SHALL BE INSTALLED AT THE LESSER OF THE TWO CURVE SPACINGS.
- MARKERS ARE TO BE USED ADJACENT TO BOTH SOLID WHITE LINES IN DUAL LEFT TURN LANES

LANE MARKER NOTES

- A. USE DOUBLE LANE LINE MARKERS SPACED AS SHOWN.
- B. REDUCE TO 40' (12 m) O.C. ON CURVES WHERE ADVISORY SPEEDS ARE 10 M.P.H (20 km/h) LOWER THAN POSTED SPEEDS.

SYMBOLS

- YELLOW STRIPE
- WHITE STRIPE
- ONE-WAY AMBER MARKER
- ONE-WAY CRYSTAL MARKER (W/O)
- TWO-WAY AMBER MARKER

DESIGN NOTES

- DOUBLE LANE LINE MARKERS SHALL BE USED UNLESS SPECIFIED OTHERWISE.
- EXCEPT AS SHOWN ON THE LANE REDUCTION TRANSITION AND FREEWAY EXIT RAMP DETAIL, MARKERS ARE NOT TO BE SPECIFIED ON RIGHT EDGE LINES.
- THE EXACT MARKER LIMITS, SPACING, AND COLOR SHALL BE INCLUDED IN THE PLANS WHEN STANDARD SPECIFICATIONS ARE NOT BEING USED.
- MARKERS SHOULD NOT BE USED ALONGSIDE CURBS EXCEPT FOR EXTREMELY SHORT SECTIONS OF CURBS WHERE NOT MORE THAN TWO MARKERS WOULD BE INVOLVED.

All dimensions are in inches (millimeters) unless otherwise shown.

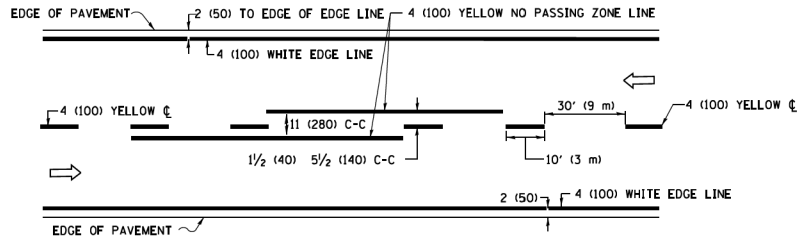
USER NAME = aham	DESIGNED - AMH	REVISED -
DRAWN -	REVISOR - T. RAMMACH	03-12-99
PLOT SCALE = 1" = 20'	CHECKED - EPS	REVISED -
PLOT DATE = 10/31/2024	DATE - 2/28/2025	REVISED -

STATE OF ILLINOIS DEPARTMENT OF TRANSPORTATION

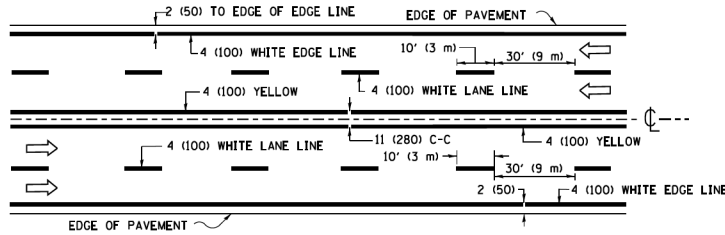
TYPICAL APPLICATIONS RAISED REFLECTIVE PAVEMENT MARKERS (SNOW-PLOW RESISTANT)
SCALE: NONE SHEET 1 OF 1 SHEETS STA. TO STA.

F.A.U. RTE.	SECTION	COUNTY	TOTAL SHEETS	SHEET NO.
3520	21-00110-00-RS	COOK	24	20
CONTRACT NO. 61L63				

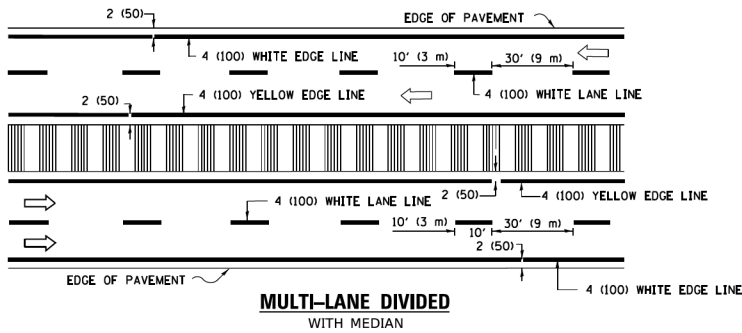
DATE PLOTTED = 2/28/2025 1:38:10 PM
PEN TABLE = prof.tbl
PLOT CONFIG = DOT_PDF_Nelayera_BW.ctb
FILE NAME = C:\Users\jrcorbin\OneDrive\Documents\Projects\Illinois\Projects\Local\Agency\Functional\Overlay\District One\Details\TC-13.dgn
MODEL: Default
FILE NAME: p:\projects\Illinois\Projects\Local\Agency\Functional\Overlay\District One\Details\TC-13.dgn



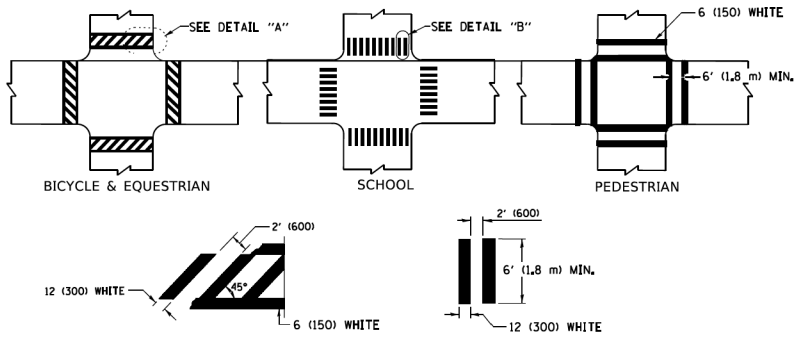
2-LANE ROADWAY



MULTI-LANE UNDIVIDED



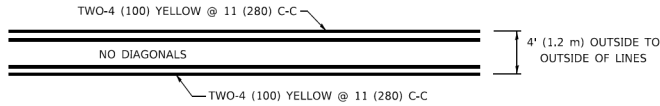
TYPICAL LANE AND EDGE LINE MARKING



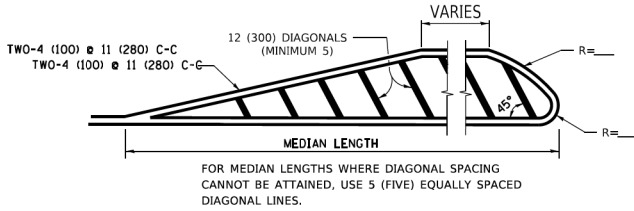
DETAIL "A" DETAIL "B"

TYPICAL CROSSWALK MARKING

* MARKINGS SHALL BE INSTALLED PARALLEL TO THE CENTERLINE OF THE ROAD WHICH IT CROSSES

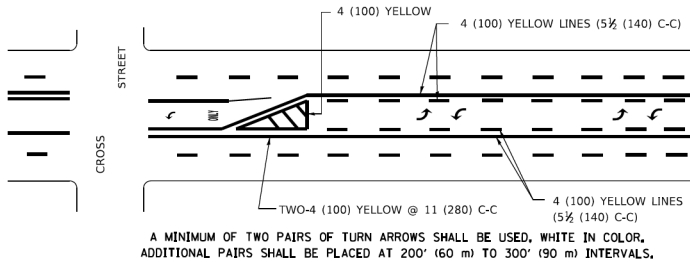


4' (1.2 m) WIDE MEDIANS ONLY

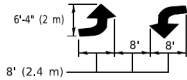


DIAGONAL LINE SPACING: 50' (15 m) C-C (LESS THAN 30MPH (50 km/h))
75' (25 m) C-C 30MPH (50 km/h) TO 45MPH (70 km/h))
150' (45 m) C-C (MORE THAN 45MPH (70 km/h))

MEDIANS OVER 4' (1.2 m) WIDE

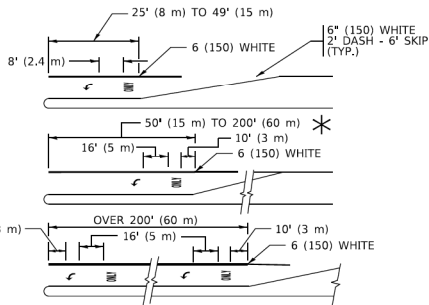


A MINIMUM OF TWO PAIRS OF TURN ARROWS SHALL BE USED, WHITE IN COLOR, ADDITIONAL PAIRS SHALL BE PLACED AT 200' (60 m) TO 300' (90 m) INTERVALS.



MEDIAN WITH TWO-WAY LEFT TURN LANE

TYPICAL PAINTED MEDIAN MARKING

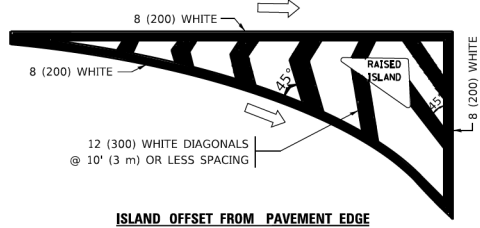


FULL SIZE LETTERS 8' (2.4 m) AND ARROWS SHALL BE USED.
AREA = 15.6 SQ. FT. (1.5 m²) ONLY AREA = 20.8 SQ. FT. (1.9 m²)

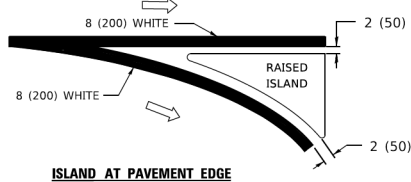
* TURN LANES IN EXCESS OF 400' (120 m) IN LENGTH MAY HAVE AN ADDITIONAL SET OF ARROW - "ONLY" INSTALLED MIDWAY BETWEEN THE OTHER TWO SETS OF ARROW - "ONLY".

TYPICAL LEFT (OR RIGHT) TURN LANE

TYPICAL TURN LANE MARKING

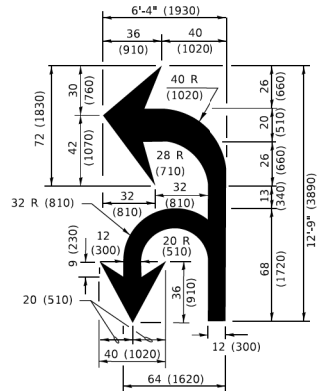


ISLAND OFFSET FROM PAVEMENT EDGE

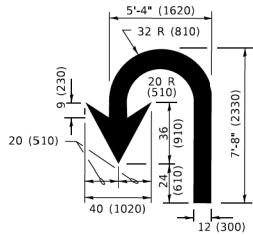


ISLAND AT PAVEMENT EDGE

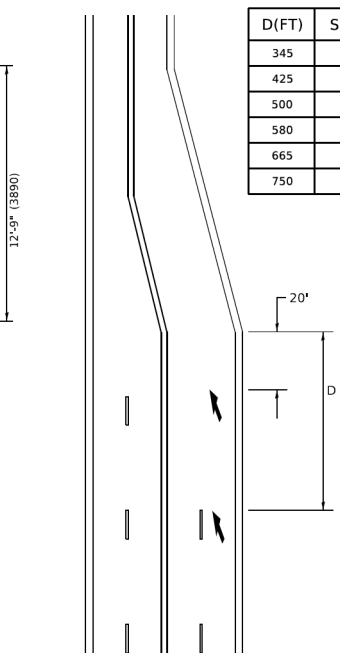
TYPICAL ISLAND MARKING



COMBINATION LEFT AND U-TURN



U-TURN



LANE REDUCTION TRANSITION

* LANE REDUCTION ARROWS REQUIRED AT SPEEDS OF 45 MPH OR GREATER OR WHEN SPECIFIED IN PLANS.

TYPE OF MARKING	WIDTH OF LINE	PATTERN	COLOR	SPACING / REMARKS
CENTERLINE ON 2 LANE PAVEMENT	4 (100)	SKIP-DASH	YELLOW	10' (3 m) LINE WITH 30' (9 m) SPACE
CENTERLINE ON MULTI-LANE UNDIVIDED PAVEMENT	2 @ 4 (100)	SOLID	YELLOW	11 (280) C-C
NO PASSING ZONE LINES: FOR ONE DIRECTION FOR BOTH DIRECTIONS	4 (100) 2 @ 4 (100)	SOLID SOLID	YELLOW YELLOW	5 1/2 (140) C-C FROM SKIP-DASH CENTERLINE 11 (280) C-C OMIT SKIP-DASH CENTERLINE BETWEEN
LANE LINES	4 (100) 5 (125) ON FREEWAYS	SKIP-DASH SKIP-DASH	WHITE WHITE	10' (3 m) LINE WITH 30' (9 m) SPACE
DOTTED LINES (EXTENSIONS OF CENTER, LANE OR TURN LANE MARKINGS)	SAME AS LINE BEING EXTENDED	SKIP-DASH	SAME AS LINE BEING EXTENDED	2' (600) LINE WITH 6' (1.8 m) SPACE
EDGE LINES	4 (100)	SOLID	YELLOW-LEFT WHITE-RIGHT	OUTLINE MEDIANS IN YELLOW
TURN LANE MARKINGS	6 (150) LINE; FULL SIZE LETTERS & SYMBOLS (8' (2.4m))	SOLID	WHITE	SEE TYPICAL TURN LANE MARKING DETAIL
TWO WAY LEFT TURN MARKING	2 @ 4 (100) EACH DIRECTION 8' (2.4m) LEFT ARROW	SKIP-DASH AND SOLID IN PAIRS	YELLOW WHITE	10' (3 m) LINE WITH 30' (9 m) SPACE FOR SKIP-DASH; 5 1/2 (140) C-C BETWEEN SOLID LINE AND SKIP-DASH LINE SEE TYPICAL TWO-WAY LEFT TURN MARKING DETAIL
CROSSWALK LINES (PEDESTRIAN) A. DIAGONALS (BIKE & EQUESTRIAN) B. LONGITUDINAL BARS (SCHOOL)	2 @ 6 (150) 12 (300) @ 45° 12 (300) @ 90°	SOLID SOLID SOLID	WHITE WHITE WHITE	NOT LESS THAN 6' (1.8 m) APART 2' (600) APART 2' (600) APART SEE TYPICAL CROSSWALK MARKING DETAILS.
STOP LINES	24 (600)	SOLID	WHITE	PLACE 4' (1.2 m) IN ADVANCE OF AND PARALLEL TO CROSSWALK, IF PRESENT. OTHERWISE, PLACE AT DESIRED STOPPING POINT. PARALLEL TO CROSSROAD CENTERLINE, WHERE POSSIBLE
PAINTED MEDIANS	2 @ 4 (100) WITH 12 (300) DIAGONALS @ 45° NO DIAGONALS USED FOR 4' (1.2 m) WIDE MEDIANS	SOLID	YELLOW: TWO WAY TRAFFIC WHITE: ONE WAY TRAFFIC	11 (280) C-C FOR THE DOUBLE LINE SEE TYPICAL PAINTED MEDIAN MARKING.
GORE MARKING AND CHANNELIZING LINES	8 (200) WITH 12 (300) DIAGONALS @ 45°	SOLID	WHITE	DIAGONALS: 15' (4.5 m) C-C (LESS THAN 30MPH (50 km/h)) 20' (6 m) C-C 30MPH (50 km/h) TO 45MPH (70 km/h)) 30' (9 m) C-C (OVER 45MPH (70 km/h))
RAILROAD CROSSING	24 (600) TRANSVERSE LINES: "RR" IS 6' (1.8 m) LETTERS: 16 (400) LINE FOR "X"	SOLID	WHITE	SEE STATE STANDARD 780001 AREA OF: "R"=3.6 SQ. FT. (0.33 m ²) EACH "X"=54.0 SQ. FT. (5.0 m ²)
SHOULDER DIAGONALS (REQUIRED FOR SHOULDERS ≥ 8')	12 (300) @ 45°	SOLID	WHITE - RIGHT YELLOW - LEFT	50' (15 m) C-C (LESS THAN 30MPH (50 km/h)) 75' (25 m) C-C (30 MPH (50 km/h) TO 45MPH (70 km/h)) 150' (45 m) C-C (OVER 45MPH (70 km/h))
U TURN ARROW	SEE DETAIL	SOLID	WHITE	16.3 SF
2 ARROW COMBINATION LEFT AND U TURN	SEE DETAIL	SOLID	WHITE	30.4 SF

FOR FURTHER DETAILS ON PAVEMENT MARKING REFER TO STANDARD SPECIFICATIONS FOR ROAD AND BRIDGE CONSTRUCTION AND STATE STANDARD 780001.

All dimensions are in inches (millimeters) unless otherwise shown.

USER NAME = footem	DESIGNED - EVERS	REVISED - C. JUCIUS 09-09-09
DRAWN -	REVISOR - C. JUCIUS 07-01-13	
PLOT SCALE = 50.0000' / in.	CHECKED -	REVISED - C. JUCIUS 12-21-15
PLOT DATE = 3/4/2019	DATE - 03-19-90	REVISED - C. JUCIUS 04-12-16

STATE OF ILLINOIS
DEPARTMENT OF TRANSPORTATION

DISTRICT ONE
TYPICAL PAVEMENT MARKINGS

SCALE: NONE SHEET 1 OF 2 SHEETS STA. TO STA.

F.A.U. RTE.	SECTION	COUNTY	TOTAL SHEETS	SHEET NO.
3520	21-00110-00-RS	COOK	24	21
CONTRACT NO. 61L63				

CiorbaGroup
8725 W. Higgins Rd, Ste 600, Chicago, IL 60631
P 773.775.4009 | www.ciorba.com

USER NAME = aham	DESIGNED - AMH	REVISED -
DRAWN - AMH	REVISOR -	
PLOT SCALE = 1" = 20'	CHECKED - EPS	REVISED -
PLOT DATE = 10/31/2024	DATE - 2/28/2025	REVISED -

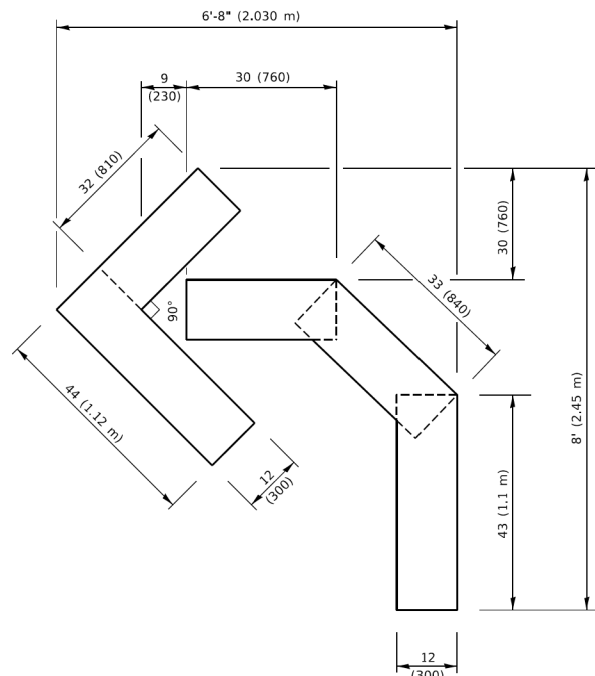
STATE OF ILLINOIS
DEPARTMENT OF TRANSPORTATION

GROSS POINT ROAD LOCAL AGENCY FUNCTIONAL OVERLAY
DISTRICT ONE DETAILS - TC-13

SCALE: NTS SHEET OF SHEETS STA. TO STA.

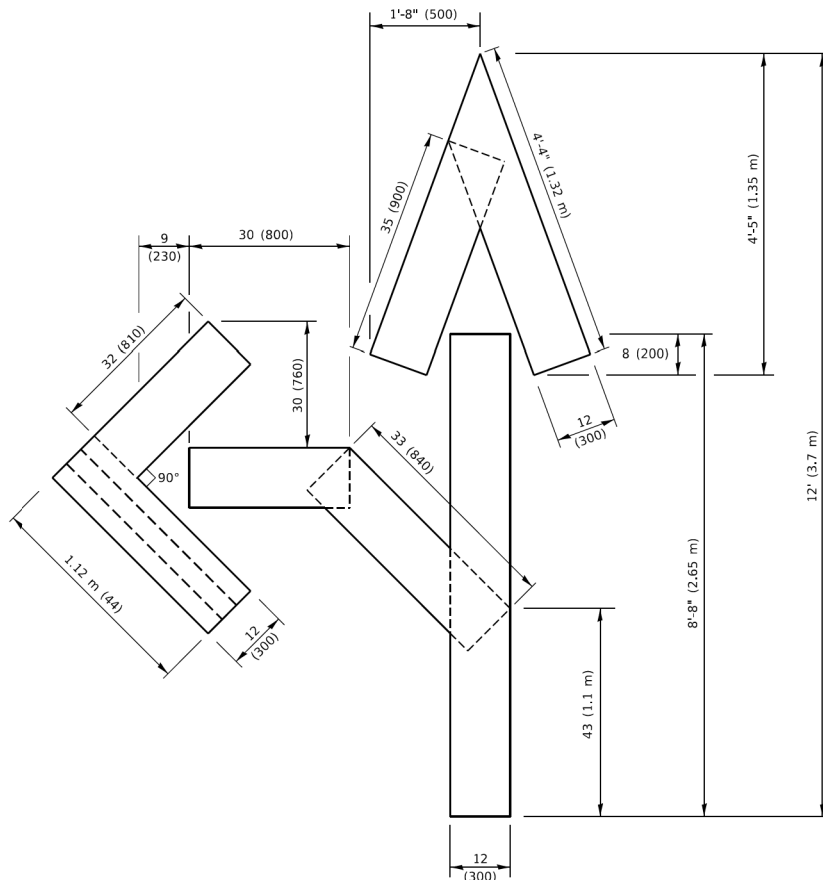
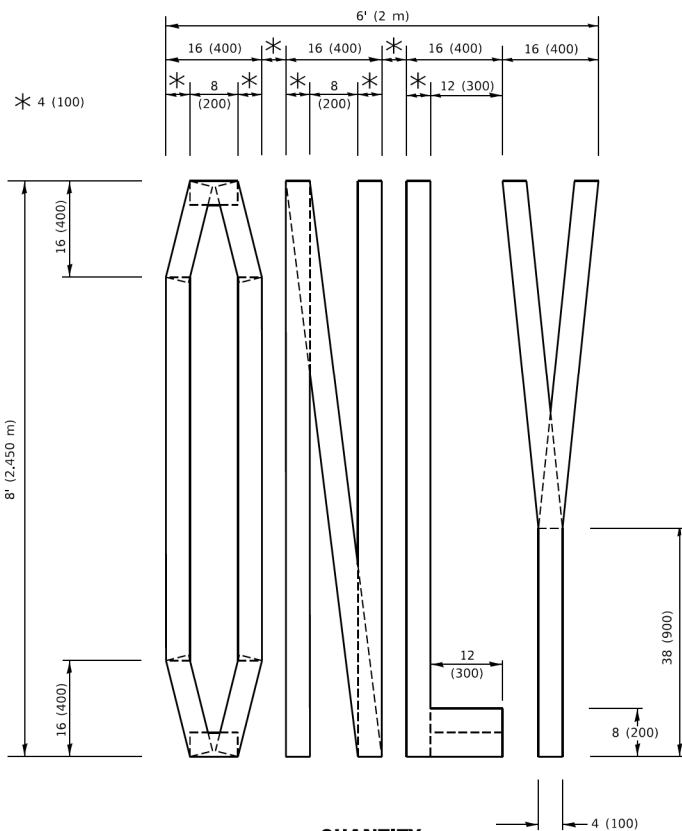
F.A.U. RTE.	SECTION	COUNTY	TOTAL SHEETS	SHEET NO.
3520	21-00110-00-RS	COOK	24	21
CONTRACT NO. 61L63				

ILLINOIS FED. AID PROJECT

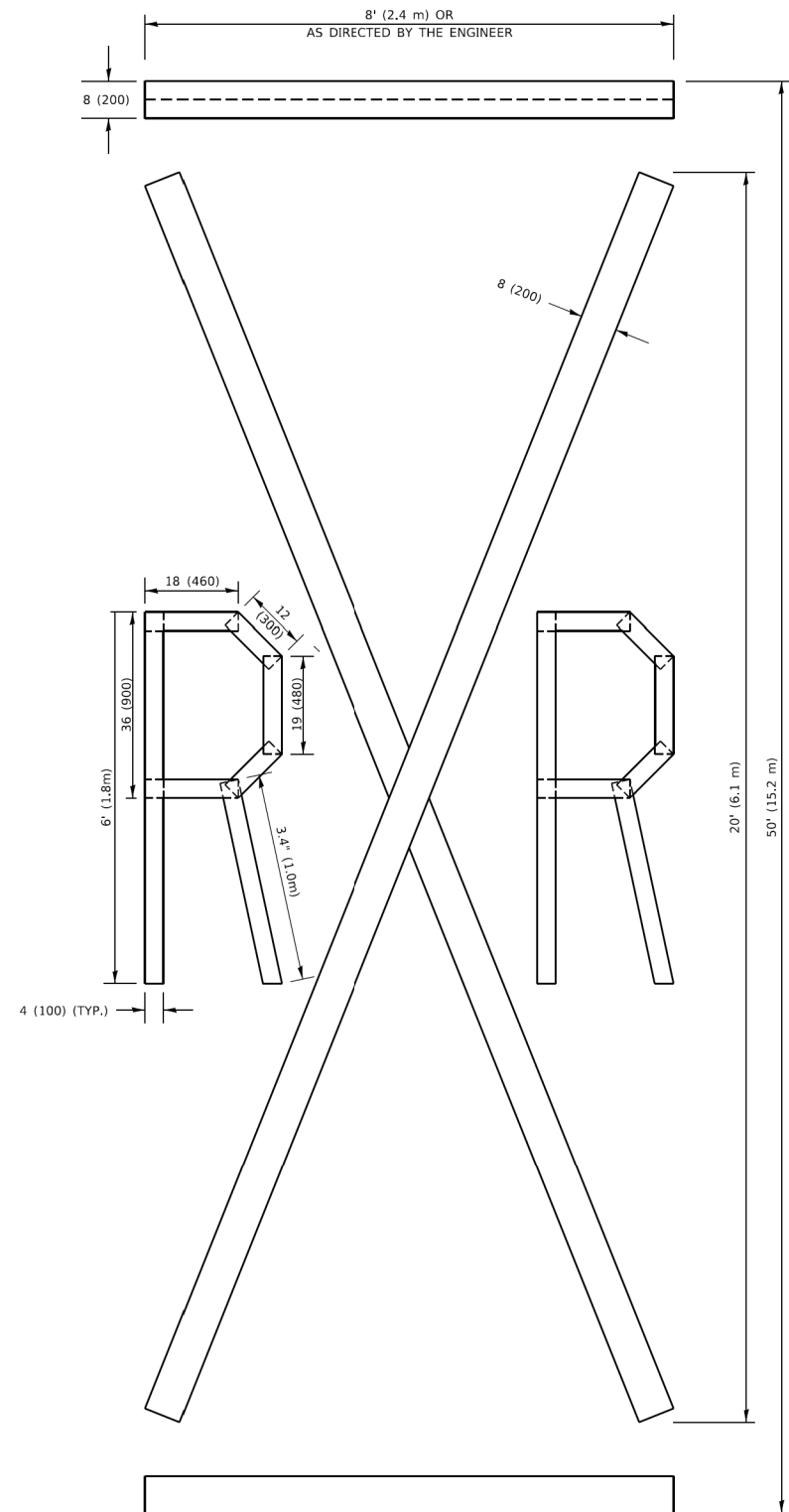


QUANTITY

4 (100) LINE = 45.5 ft. (13.9 m)
15.2 sq. ft. (1.41 sq. m)



NOTE:



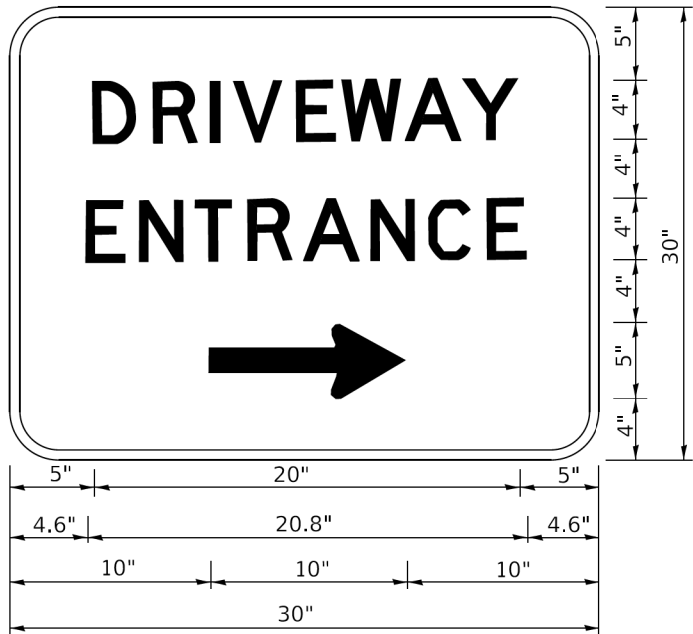
USER NAME = footemj	DESIGNED -	REVISED - T. RAMMACHER 03-02-98
	DRAWN -	REVISED - E. GOMEZ 08-28-00
PLOT SCALE = 50.0068' / in.	CHECKED -	REVISED - E. GOMEZ 08-28-00
PLOT DATE = 3/4/2019	DATE - 09-18-94	REVISED - A. SCHUETZE 09-15-16

F.A. RTE.	SECTION	COUNTY	TOTAL SHEETS	SHEET NO.
TC-16		CONTRACT NO.		
	ILLINOIS	FED. AID PROJECT		

F.A.U. RTE.	SECTION	COUNTY	TOTAL SHEETS	SHEET NO.
3520	21-00110-00-RS	COOK	24	22
		CONTRACT NO. 61L63		
ILLINOIS		FED. AID PROJECT		

DATE PLOTTED = 2/28/2025 1:38:34 PM
PEN TABLE = prof#-tbl
PLOT CONFIG = DOT_PDF_Netlayer_BW.pltcf
PROJECT SHEET NAMES
FILE NAME = p:\caddba-pw-bentley\coms\corba-pw-01\Documents\projects-ill_Munkba\lites\Morton Grove\0021456.23\CADD_Data\Sheet\0021456.23-ent-D1-TC16.dgn

MODEL: Default
FILE NAME: p:\caddba-pw-bentley\coms\corba-pw-01\Documents\projects-ill_Munkba\lites\Morton Grove\0021456.23\CADD_Data\Sheet\0021456.23-ent-D1-TC16.dgn



3.0" RADIUS, 0.5" BORDER, WHITE ON GREEN; REFLECTORIZED
"DRIVEWAY" D; "ENTRANCE" D; STANDARD ARROW CUSTOM 12.0" x 5.0"

NOTES:

1. HALF OF THE SIGNS WILL REQUIRE A LEFT HAND FACING ARROW.
2. TWO SIGNS SHALL BE USED AT EACH COMMERCIAL ENTRANCE
PLACED BACK-TO-BACK: ONE WITH A RIGHT HAND ARROW (SHOWN)
SHALL BE PLACED ON THE NEAR RIGHT SIDE THE DRIVEWAY
AND ONE WITH A LEFT HAND ARROW SHALL BE PLACED ON THE
FAR LEFT SIDE OF THE DRIVEWAY.
3. SIGNS TO BE PAID FOR AS ITEM "TEMPORARY INFORMATION SIGNING".

				STATE OF ILLINOIS DEPARTMENT OF TRANSPORTATION				DRIVEWAY ENTRANCE SIGNING				F.A. RTE.	SECTION		COUNTY	TOTAL SHEETS	SHEET NO.	
												TC-26		CONTRACT NO.				
												ILLINOIS		FED. AID PROJECT				