

STATE OF ILLINOIS  
DEPARTMENT OF TRANSPORTATION

F.A.U. RTE	SECTION	COUNTY	TOTAL SHEETS	SHEET NO.
2798	2024 1030 RS	COOK	28	1
ILLINOIS CONTRACT NO. 62X70				
* 28 + 1 = 29 TOTAL SHEETS				

FOR INDEX OF SHEETS, SEE SHEET NO. 2

THE PROJECT IS LOCATED IN THE VILLAGE  
OF SKOKIE

**TRAFFIC DATA:**

2023 ADT - 5600 TO 12700 VPD

SPEED LIMIT - 30 MPH

FUNCTIONAL CLASS: MAJOR COLLECTOR

**OMISSIONS:**

CHICAGO TRANSIT AUTHORITY (CTA YELLOW LINE)  
STA. 24+84 TO 25+01  
STA. 25+48 TO 25+66



FULL SIZE PLANS HAVE BEEN PREPARED USING STANDARD  
ENGINEERING SCALES. REDUCED SIZED PLANS WILL NOT  
CONFORM TO STANDARD SCALES. IN MAKING MEASUREMENTS  
ON REDUCED PLANS, THE ABOVE SCALES MAY BE USED.

J.U.L.I.E.  
JOINT UTILITY LOCATION INFORMATION FOR EXCAVATION  
1-800-892-0123  
OR 811

PROJECT ENGINEER: VESELIN VELICHKOV (847) 705-4432  
PROJECT MANAGER: FAWAD AQUEEL

CONTRACT NO. 62X70

# PROPOSED HIGHWAY PLANS

F.A.U. ROUTE 2798: NILES CENTER ROAD  
IL 58 (DEMPSTER STREET) TO MAIN STREET  
SECTION: 2024-1030-RS

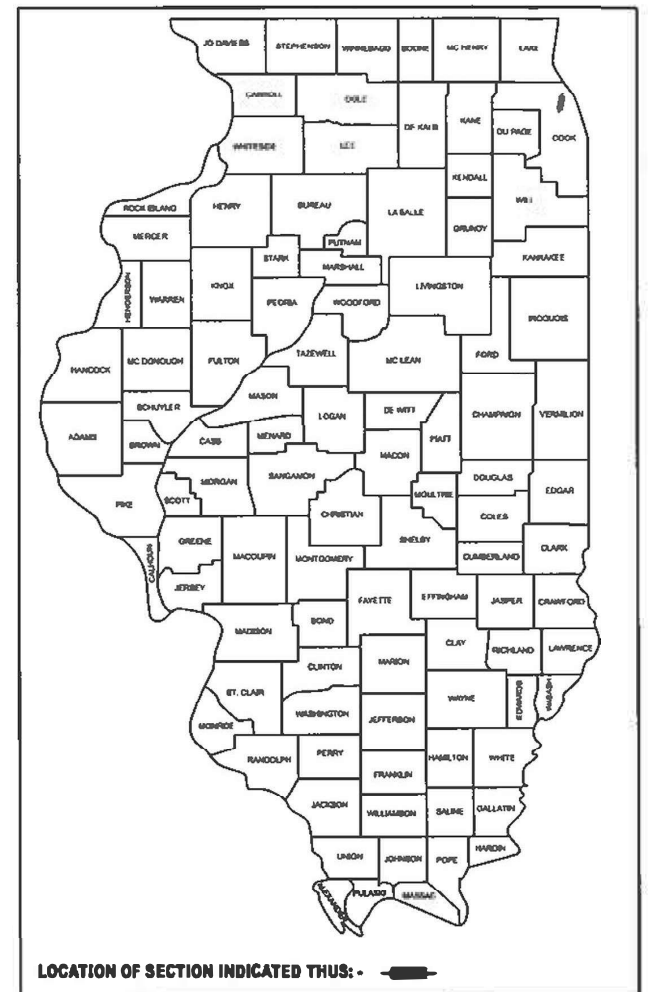
STANDARD OVERLAY, ADA IMPROVEMENTS  
COOK COUNTY

C-91-081-25



GROSS LENGTH OF PROJECT 2527 FEET - .44 MILES  
NET LENGTH OF PROJECT 2321 FEET - .44 MILES

D-91-061-25



STATE OF ILLINOIS  
DEPARTMENT OF TRANSPORTATION

SUBMITTED March 19<sup>th</sup> 2025  
James J. 112  
REGIONAL ENGINEER  
May 9 2025  
Scott A. Etk  
ENGINEER OF DESIGN AND ENVIRONMENT  
May 9 2025  
James J. 112  
DIRECTOR OF HIGHWAYS PROJECT IMPLEMENTATION

REVISED SHEET 5/29/2025

PRINTED BY THE AUTHORITY  
OF THE STATE OF ILLINOIS

REV-SEP

INDEX OF SHEETS

SHEET NO.	DESCRIPTION
1	COVER SHEET
2	INDEX OF SHEETS, STATE STANDARDS AND GENERAL NOTES
3-5	SUMMARY OF QUANTITIES
6-7	EXISTING AND PROPOSED TYPICAL SECTIONS
8-9	ROADWAY AND PAVEMENT MARKING PLANS
10	DETECTOR LOOP LOCATION AND APS DETAILS
11-12	ADA PEDESTRIAN SIDEWALK PLANS
13-18	ADA SIDEWALK CURB RAMP DETAILS
19	DETAILS FOR FRAMES AND LIDS TO BE ADJUSTED WITH MILLING (BD-08)
20	PAVEMENT PATCHING FOR HMA SURFACED PAVEMENT (BD-22)
21	CURB AND CURB AND GUTTER REMOVAL AND REPLACEMENT (BD-24)
22	BUTT JOINT AND HMA TAPER DETAILS (BD-32)
23	TRAFFIC CONTROL AND PROTECTION FOR SIDE ROADS, INTERSECTIONS AND DRIVEWAYS (TC-10)
24	TYPICAL APPLICATION FOR RAISED REFLECTIVE PAVEMENT MARKERS (SNOW-PLOW RESISTANT) (TC-11)
25	DISTRICT ONE TYPICAL PAVEMENT MARKING (TC-13)
26	TRAFFIC CONTROL AND PROTECTION AT TURN BAYS (TC-14)
27	SHORT-TERM PAVEMENT MARKING—LETTERS AND SYMBOLS (TC-16)
28	ARTERIAL ROAD INFORMATION SIGNING (TC-22)

STATE STANDARDS

000001-08	STANDARD SYMBOLS, ABBREVIATIONS AND PATTERNS
424001-12	PERPENDICULAR CURB RAMPS FOR SIDEWALKS
424006-06	DIAGONAL CURB RAMPS FOR SIDEWALKS
424011-05	CORNER PARALLEL CURB RAMPS FOR SIDEWALKS
424016-06	MID-BLOCK CURB RAMPS FOR SIDEWALKS
424021-07	DEPRESSED CORNER FOR SIDEWALKS
442201-03	CLASS C AND D PATCHES
604001-05	FRAMES AND LIDS, TYPE 1
604086-05	FRAME AND GRATE, TYPE 23
606001-08	CONCRETE CURB TYPE B AND COMBINATION CONCRETE CURB AND GUTTER
701006-05	OFF-ROAD OPERATIONS 2L, 2W, 15' TO 24' FROM PAVEMENT EDGE
701011-04	OFF-ROAD MOVING OPERATIONS, 2L, 2W, DAY ONLY
701301-04	LANE CLOSURE, 2L, 2W, SHORT TIME OPERATIONS
701311-03	LANE CLOSURE, 2L, 2W, MOVING OPERATIONS DAY ONLY
701501-06	URBAN LANE CLOSURE, 2L, 2W, UNDIVIDED
701502-09	URBAN LANE CLOSURE, 2L, 2W WITH BI-DIRECTIONAL LEFT TURN LANE
701701-10	URBAN LANE CLOSURE, MULTILANE INTERSECTION
701801-06	SIDEWALK OR SIDEWALK CLOSURE CORNER
701901-10	TRAFFIC CONTROL DEVICES
780001-05	TYPICAL PAVEMENT MARKINGS
781001-04	TYPICAL APPLICATION FOR RAISED REFLECTIVE PAVEMENT MARKERS
814001-03	HANDHOLES
886001-01	DETECTOR LOOP INSTALLATIONS
886006-01	TYPICAL LAYOUTS FOR DETECTION LOOPS

GENERAL NOTES

- 1) BEFORE STARTING ANY EXCAVATION, THE CONTRACTOR SHALL CALL "JULIE AT (800) 892-0123 OR 811 FOR FIELD LOCATIONS OF BURIED ELECTRIC, TELEPHONE AND GAS FACILITIES, (48 HOURS NOTIFICATION IS REQUIRED).
- 2) TEN (10) FOOT TRANSITION SHALL BE USED TO MATCH PROPOSED CURB AND GUTTER AND MEDIAN ITEMS OF WORK TO EXISTING CURBS AND GUTTERS AND MEDIANS IN THE FIELD, UNLESS OTHERWISE SHOWN. THE TRANSITION SHALL BE PAID FOR AT THE CONTRACT UNIT PRICE FOR THE PROPOSED ITEMS OF WORK SPECIFIED.
- 3) THE CONTRACTOR SHALL COORDINATE CONSTRUCTION ACTIVITIES WITH THE UTILITY COMPAINES AND THE VILLAGE OF SKOKIE.
- 4) THE CONTRACTOR WILL NOT BE ALLOWED TO SET UP A YARD OR FIELD OFFICE ON STATE PROPERTY WITHOUT WRITTEN PERMISSION FROM THE DEPARTMENT INCLUDING THE ROADSIDE DEVELOPMENT UNIT.
- 5) ANY PAVEMENT MARKINGS AND RAISED REFLECTIVE PAVEMENT MARKERS OBLITERATED BY MILLING AND RESURFACING OPERATIONS ON SIDE STREETS AND ENTRANCES SHALL BE REPLACED AND PAID FOR IN KIND.
- 6) ALL DAMAGE TO EXISTING PAVEMENT MARKINGS OR RAISED REFLECTIVE PAVEMENT MARKERS OUTSIDE THE REMOVAL LINE SHOWN ON THE PLANS SHALL BE REPLACED AT NO ADDITIONAL COST TO THE DEPARTMENT.
- 7) ALL PAVEMENT PATCHING LOCATIONS WILL BE DETERMINED IN THE FIELD BY THE ENGINEER.
- 8) LOCATION OF COMBINATION CONCRETE CURB AND GUTTER REMOVAL AND REPLACEMENT [OR COMBINATION CURB AND AND GUTTER (THE TYPE SPECIFIED ON THE PLANS)], WILL BE DETERMINED IN THE FIELD BY THE ENGINEER.
- 9) DRAINAGE ADJUSTMENT OR RECONSTRUCTION LOCATIONS WILL BE DETERMINED IN THE FIELD BY THE ENGINEER.
- 10) IT SHALL BE THE CONTRACTORS RESPONSIBILITY TO VERIFY ALL DIMENSIONS AND EXISTING CONDITIONS IN THE FIELD PRIOR TO CONSTRUCTION AND ORDERING OF MATERIALS.
- 11) FRAMES AND GRATES ADJUSTMENTS OF PRIVATE UTILITIES WITHIN THE LIMITS OF THE IMPROVEMENT SHALL BE DONE BY THEIR RESPECTIVE OWNERS AND ARE NOT IN PART OF THIS CONTRACT.
- 12) BEFORE BEGINNING ANY WORK, THE CONTRACTOR SHALL RETAIN AND RECORD FOR FUTURE REFERENCE, ALL EXISTING PAVEMENT MARKING LINES (RAISED REFLECTIVE PAVEMENT MARKERS) IN ORDER THAT THESE LOCATIONS CAN BE RE-ESTABLISHED FOR STRIPING. EXACT LOCATIONS OF ALL PAVEMENT MARKINGS SHALL BE AS SHOWN ON THE PLANS OR AS DIRECTED BY THE ENGINEER.
- 13) WHEN THE MILLED PAVEMENT IS OPEN TO TRAFFIC THE MAXIMUM GRADE DIFERENTIAL BETWEEN PASSES OF THE MILLING MACHINE SHALL NOT EXCEED 1 1/2 INCH (40 mm) WHERE THE SPEED LIMIT IS 40 MPH (80 km/ h) OR LESS AND 1 INCH (25 mm) WHERE THEN SPEED LIMIT IS GREATER THAN 40 MPH (80 km/ h). WITH WRITTEN APPROVAL OF THE ENGINEER, A MAXIMUM GRADE DIFFERENTIAL 3 INCHES (75 mm) MAY BE ALLOWED IF THE EDGE OF THE MILLING MACHINE IS SLOPED A MINIMUM OF (1:3).
- 14) THE CONTRACTOR SHALL CONTACT THE DISTRICT ONE TRAFFIC CONTROL SUPERVISOR FOR ARTERIALS AT KALPANA,KANNAN-HOSADURGA@ILLINOIS.GOV A MINIMUM OF 72 HOURS IN ADVANCE OF BEGINNING WORK.
- 15) PERMANENT PAVEMENT MARKINGS SHALL BE THERMOPLASTIC (OF THE EXTRUDED TYPE) AND SHOULD BE PLACED IN ACCORDANCE WITH THE "DISTRICT ONE TYPICAL PAVEMENT MARKINGS" DETAIL. (TC-13)
- 16) THE RESIDENT ENGINEER SHALL CONTACT MR. FADI SULTAN, AREA TRAFFIC ENGINEER, FADI.SULTAN@ILLINOIS.GOV, A MINIMUM OF TWO (2) WEEKS PRIOR TO THE PLACEMENT OF PERMANENT PAVEMENT MARKINGS.
- 17) THE CONTRACTOR SHALL MAINTAIN PEDESTRIAN ACCESS AT ALL TIMES DURING CONSTRUCTION.
- 18) THE CONTRACTOR SHALL CONTACT THE ROADSIDE DEVELOPMENT UNIT AT (847) 705-4171 AT LEAST TWO WEEKS PRIOR TO BEGINNING LANDSCAPE AND FORESTRY WORK FOR LAYOUT.
- 19) PAVEMENT MARKING TAPE, TYPE IV SHALL BE USED FOR SHORT-TERM PAVEMENT MARKING ON ALL FINAL SURFACES.
- 20) ALL MILLED SURFACES SHALL BE AT A UNIFORM CROSS SLOPE PER LANE AND FREE OF RIDGES BETWEEN PASSES. ANY DEVIATIONS SHALL BE CORRECTED AT NO COST TO THE DEPARTMENT.
- 21) THE "ROAD CONSTRUCTION AHEAD" SIGNS SHALL REMAIN INSTALLED UNTIL THE COMPLETION OF THE PROJECT OR WHEN NO ROADWAY HAZARDS REMAIN WITHIN THE WORK ZONE.
- 22) OVERNIGHT LANE CLOSURE SHALL NOT BE ALLOWED FOR REHABILITATION PROJECTS INVOLVING DAYTIME MILLING AND RESURFACING OPERATIONS AND CLASS D PATCHING UNLESS OTHER CONDITIONS WARRANT EXTENDED LANE CLOSURES AS DETERMINED AND APPROVED IN WRITING BY THE ENGINEER OR AS PROVIDED FOR IN THE CONTRACT SPECIFICATIONS.

16) THE RESIDENT ENGINEER SHALL CONTACT MR. FADI SULTAN, AREA TRAFFIC ENGINEER, FADI.SULTAN@ILLINOIS.GOV, A MINIMUM OF TWO (2) WEEKS PRIOR TO THE PLACEMENT OF PERMANENT PAVEMENT MARKINGS.

17) THE CONTRACTOR SHALL MAINTAIN PEDESTRIAN ACCESS AT ALL TIMES DURING CONSTRUCTION.

1

MODEL: Default  
FILE NAME: c:\pw\_work\pwktdolstedpaid1036957D106125-shh\ypcal.dgn

MODEL: Default  
FILE NAME: P:\11det-pw-bentley.com\FWIDOT\Documents\DOT 0 cas\Dist\ct\_1108D Projects\0106125\CADDData\CADsheets\0106125-rht-SQ0.dgn

SUMMARY OF QUANTITIES				TOTAL QUANTITIES	CONSTRUCTION TYPE CODE				
CODE NO	ITEM	UNIT	100% STATE		100% STATE				
			0005		0005				
20200100	EARTH EXCAVATION	CU YD	20	20					
21101615	TOPSOIL FURNISH AND PLACE, 4"	SQ YD	64	64					
25200110	SODDING, SALT TOLERANT	SQ YD	64	64					
40600290	BITUMINOUS MATERIALS (TACK COAT)	POUND	7635	7635					
40600370	LONGITUDINAL JOINT SEALANT	FOOT	4840	4840					
40600400	MIXTURE FOR CRACKS, JOINTS, AND	TON	17	17					
	FLANGEWAYS								
40600982	HOT-MIX ASPHALT SURFACE REMOVAL - BUTT	SQ YD	444	444					
	JOINT								
40603200	POLYMERIZED HOT-MIX ASPHALT BINDER	TON	467	467					
	COURSE, IL-4.75, N50								
40604062	HOT-MIX ASPHALT SURFACE COURSE, IL-9.5,	TON	951	951					
	MIX "D", N70								
42001300	PROTECTIVE COAT	SQ YD	176	176					
42400200	PORTLAND CEMENT CONCRETE SIDEWALK 5	SQ FT	920	920					
	INCH								
42400800	DETECTABLE WARNINGS	SQ FT	191	191					
44000158	HOT-MIX ASPHALT SURFACE REMOVAL, 2	SQ YD	11311	11311					
	1/4"								

SUMMARY OF QUANTITIES			TOTAL QUANTITIES	100% STATE	100% STATE				
CODE NO	ITEM	UNIT		0005	0005				
				0005	0005				
44000600	SIDEWALK REMOVAL	SQ FT	920	920					
44201803	CLASS D PATCHES, TYPE II, 13 INCH	SQ YD	566	566					
44201807	CLASS D PATCHES, TYPE III, 13 INCH	SQ YD	340	340					
44201809	CLASS D PATCHES, TYPE IV, 13 INCH	SQ YD	227	227					
60300105	FRAMES AND GRATES TO BE ADJUSTED	EACH	3	3					
60300305	FRAMES AND LIDS TO BE ADJUSTED	EACH	9	9					
★ 66900200	NON-SPECIAL WASTE DISPOSAL	CU YD	20	20					
★ 66900530	SOIL DISPOSAL ANALYSIS	EACH	1	1					
★ 66901001	REGULATED SUBSTANCES PRE-CONSTRUCTION	L SUM	1	1					
	PLAN								
★ 66901003	REGULATED SUBSTANCES FINAL CONSTRUCTION	L SUM	1	1					
	REPORT								
★ 66901006	REGULATED SUBSTANCES MONITORING	CAL DA	10	10					
67100100	MOBILIZATION	L SUM	1	1					
70102620	TRAFFIC CONTROL AND PROTECTION,	L SUM	1	1					
	STANDARD 701501								
70102622	TRAFFIC CONTROL AND PROTECTION,	L SUM	1	1					
	STANDARD 701502								

STATE OF ILLINOIS DEPARTMENT OF TRANSPORTATION		SUMMARY OF QUANTITIES FAU 2798 (NILES CENTER RD.)–IL 58 (DEMPSTER ST.) TO MAIN ST.				F.A.U. RTE. 2798	SECTION 2024-1030-RS	COUNTY COOK	TOTAL SHEETS 27	SHEET NO. 3	
		SCALE: NONE		SHEET	OF	SHEETS	STA.	TO STA.		CONTRACT NO. 62X70	
										ILLINOIS   FED. AID PROJECT	

1

REVISED SHEET

5/28/2025

★ SPECIALTY ITEMS

☐ NON PARTICIPATING ITEMS

MODEL: Default  
FILE NAME: p:\110101\110101.dwg  
PROJECT: 110101  
SHEET: 110101

SUMMARY OF QUANTITIES				TOTAL QUANTITIES	CONSTRUCTION TYPE CODE					SUMMARY OF QUANTITIES				TOTAL QUANTITIES	CONSTRUCTION TYPE CODE				
CODE NO	ITEM	UNIT	100% STATE		100% STATE					CODE NO	ITEM	UNIT	100% STATE		100% STATE				
			0005		0005								0005		0005				
70102635	TRAFFIC CONTROL AND PROTECTION,	L SUM	1	1						★ 78000200	THERMOPLASTIC PAVEMENT MARKING - LINE	FOOT	2309	2309					
	STANDARD 701701										4"								
70102640	TRAFFIC CONTROL AND PROTECTION,	L SUM	1	1						★ 78000400	THERMOPLASTIC PAVEMENT MARKING - LINE	FOOT	753	753					
	STANDARD 701801										6"								
70300100	SHORT TERM PAVEMENT MARKING	FOOT	846	846						★ 78000600	THERMOPLASTIC PAVEMENT MARKING - LINE	FOOT	1061	1061					
											12"								
70300150	SHORT TERM PAVEMENT MARKING	SQ FT	94	94						★ 78000650	THERMOPLASTIC PAVEMENT MARKING - LINE	FOOT	308	308					
	REMOVAL										24"								
70300211	TEMPORARY PAVEMENT MARKING LETTERS AND	SQ FT	984	984						★ 78100100	RAISED REFLECTIVE PAVEMENT MARKER	EACH	91	91					
	SYMBOLS - PAINT																		
70300221	TEMPORARY PAVEMENT MARKING - LINE 4"-	FOOT	6927	6927						78300200	RAISED REFLECTIVE PAVEMENT MARKER	EACH	82	82					
	PAINT										REMOVAL								
70300241	TEMPORARY PAVEMENT MARKING - LINE 6"-	FOOT	2259	2259						78300202	PAVEMENT MARKING REMOVAL - WATER	SQ FT	94	94					
	PAINT										BLASTING								
70300261	TEMPORARY PAVEMENT MARKING - LINE 12"-	FOOT	3183	3183						X0320050	CONSTRUCTION LAYOUT (SPECIAL)	L SUM	1	1					
	PAINT																		
70300281	TEMPORARY PAVEMENT MARKING - LINE 24"-	FOOT	924	924						X4400501	COMBINATION CURB AND GUTTER REMOVAL AND	FOOT	379	379					
	PAINT										REPLACEMENT LESS THAN OR EQUAL TO 10								
											FEET								
70307120	TEMPORARY PAVEMENT MARKING	FOOT	282	282						X5537800	STORM SEWERS TO BE CLEANED 12"	FOOT	475		475				
	- LINE 24" - TYPE IV TAPE																		
										X6030310	FRAMES AND LIDS TO BE ADJUSTED	EACH	26	26				REVISED SHEET 5/28/2025	
★ 78000100	THERMOPLASTIC PAVEMENT MARKING -	SQ FT	328	328							(SPECIAL)							★ SPECIALTY ITEMS	
	LETTERS AND SYMBOLS																	☐ NON PARTICIPATING ITEMS	

		USER NAME = Phillip.Steed		DESIGNED -		REVISED -		STATE OF ILLINOIS DEPARTMENT OF TRANSPORTATION				SUMMARY OF QUANTITIES				F.A.U. RTE.	SECTION		COUNTY	TOTAL SHEETS	SHEET NO.		
				DRAWN -		REVISED -						FAU 2798 (NILES CENTER RD.)-IL 58 (DEMPSTER ST.) TO MAIN ST.				2798	2024-1030-RS		COOK	27	4		
		PLOT SCALE = \$SCALE\$		CHECKED -		REVISED -						SCALE: NONE				SHEET OF SHEETS STA.				TO STA.			
		PLOT DATE = 3/21/2025		DATE -		REVISED -														ILLINOIS   FED. AID PROJECT			
												CONTRACT NO. 62X70											

[illegible]

MODEL: NilesCenterRd\_E\_Rcwy\_Plan\_1 [Sheet]  
FILE NAME: c:\pwworking\dot\steed\paid\1036957\106125-shh-plan.dgn

PAVEMENT MARKING LEGEND:

- ① THERMOPLASTIC PAVEMENT MARKING - SKIP DASH, 4", 10' DASH - 30' SKIP YELLOW (TYP.)

② THERMOPLASTIC PAVEMENT MARKING - DOUBLEYELLOW CENTERLINE, 4" (TYP.)

③ THERMOPLASTIC PAVEMENT MARKING - MEDIAN EDGELINE, 4" YELLOW (TYP.)

④ THERMOPLASTIC PAVEMENT MARKING - TURN LANE LINE, 6" WHITE (TYP.)

⑤ THERMOPLASTIC PAVEMENT MARKING - DOTTED DASHED LINE, 6", 2' DASH - 6' SKIP WHITE (TYP.)

⑥ THERMOPLASTIC PAVEMENT MARKING - CROSSWALK, 6" WHITE (TYP.)
- ⑦ THERMOPLASTIC PAVEMENT MARKING - DIAGONALS, 12" YELLOW (TYP.)

⑧ THERMOPLASTIC PAVEMENT MARKING - SCHOOL CROSSING, 12" WHITE (TYP.)

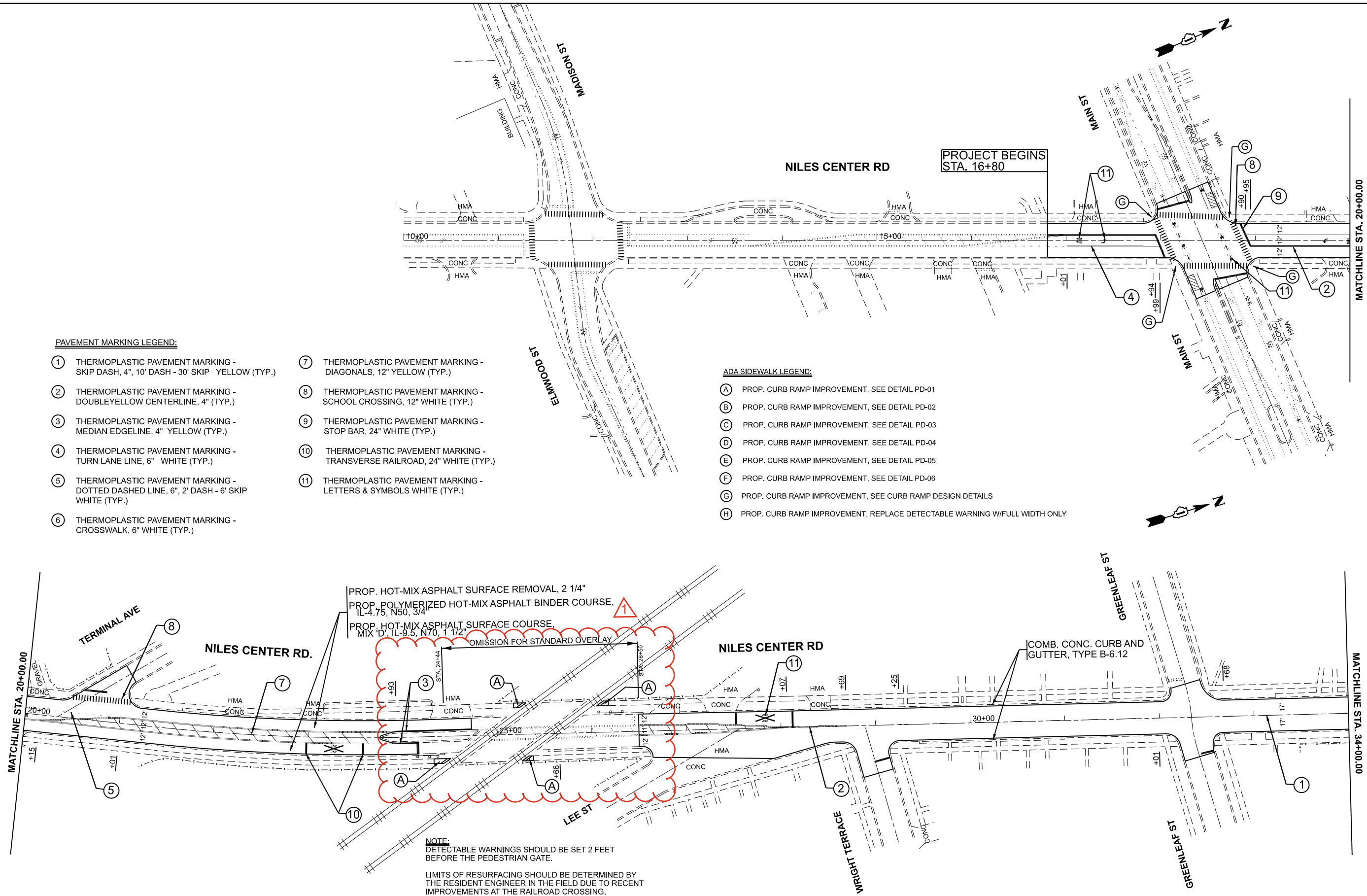
⑨ THERMOPLASTIC PAVEMENT MARKING - STOP BAR, 24" WHITE (TYP.)

⑩ THERMOPLASTIC PAVEMENT MARKING - TRANSVERSE RAILROAD, 24" WHITE (TYP.)

⑪ THERMOPLASTIC PAVEMENT MARKING - LETTERS & SYMBOLS WHITE (TYP.)

ADA SIDEWALK LEGEND:

- (A) PROP. CURB RAMP IMPROVEMENT, SEE DETAIL PD-01
- (B) PROP. CURB RAMP IMPROVEMENT, SEE DETAIL PD-02
- (C) PROP. CURB RAMP IMPROVEMENT, SEE DETAIL PD-03
- (D) PROP. CURB RAMP IMPROVEMENT, SEE DETAIL PD-04
- (E) PROP. CURB RAMP IMPROVEMENT, SEE DETAIL PD-05
- (F) PROP. CURB RAMP IMPROVEMENT, SEE DETAIL PD-06
- (G) PROP. CURB RAMP IMPROVEMENT, SEE CURB RAMP DESIGN DETAILS
- (H) PROP. CURB RAMP IMPROVEMENT, REPLACE DETECTABLE WARNING W/FULL WIDTH ONLY



NOTE:  
DETECTABLE WARNINGS SHOULD BE SET 2 FEET BEFORE THE PEDESTRIAN GATE.

LIMITS OF RESURFACING SHOULD BE DETERMINED BY THE RESIDENT ENGINEER IN THE FIELD DUE TO RECENT IMPROVEMENTS AT THE RAILROAD CROSSING.

REVIS 5/28/2025

USER NAME	= Phillip.Steed	DESIGNED	-	REVISED	- 5/23/2025
		DRAWN	-	REVISED	-
		CHECKED	-	REVISED	-
PLOT DATE	= 5/6/2025	DATE	-	REVISED	-

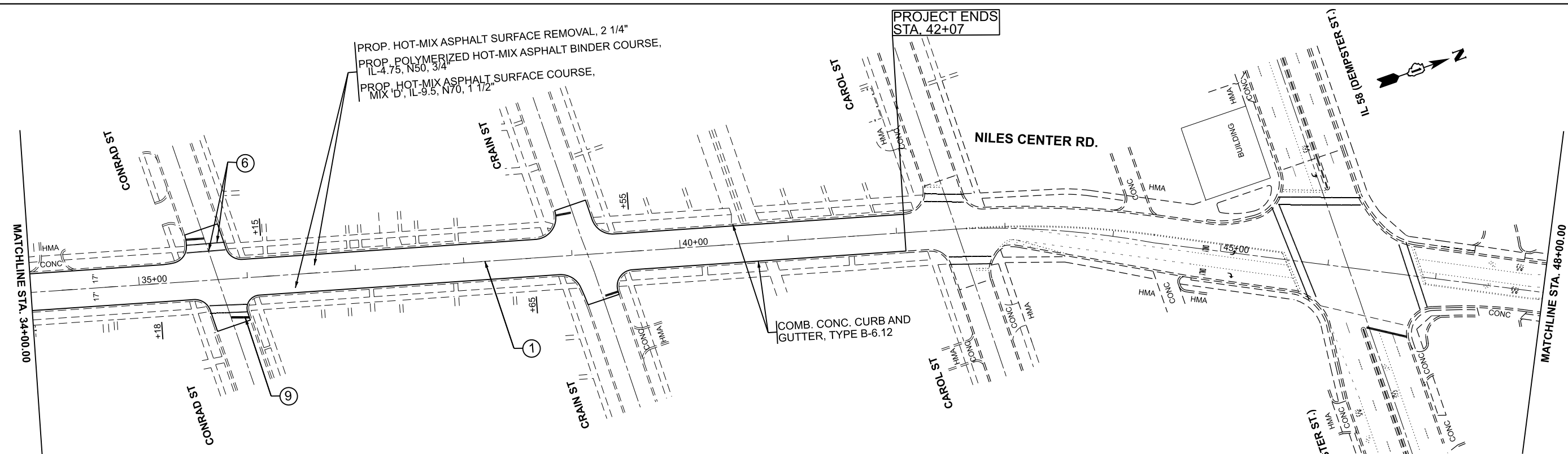
STATE OF ILLINOIS  
DEPARTMENT OF TRANSPORTATION

ROADWAY AND PAVEMENT MARKING PLANS  
NILES CENTER RD. (IL. ROUTE 58 (DEMPSTER ST.) TO MAIN ST.)

SCALE: 1"=50' SHEET 1 OF 2 SHEETS STA. 6+00.00 TO STA. 34+00.00

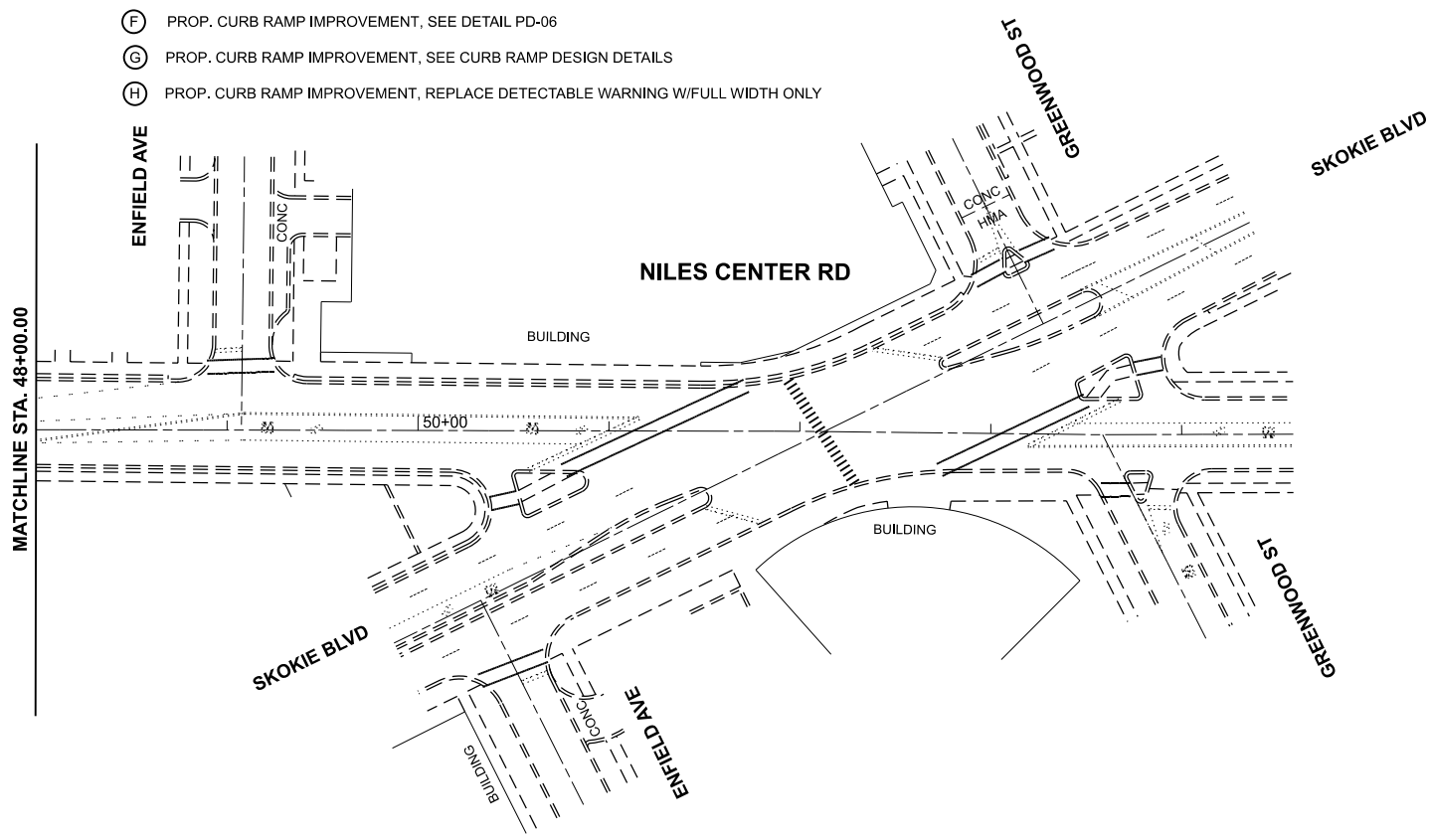
F.A.U. RTE.	SECTION	COUNTY	TOTAL SHEETS	SHEET NO.
2798	2024-1030-RS	COOK	28	8
CONTRACT NO. 62X70				
ILLINOIS FED. AID PROJECT				

MODEL: NilesCenterRd\_E\_Rcvy\_Plan\_3 [Sheet]  
FILE NAME: c:\pwworking\dot\std\paid\1038957\106125-shh-plan.dgn



ADA SIDEWALK LEGEND:

- (A) PROP. CURB RAMP IMPROVEMENT, SEE DETAIL PD-01
- (B) PROP. CURB RAMP IMPROVEMENT, SEE DETAIL PD-02
- (C) PROP. CURB RAMP IMPROVEMENT, SEE DETAIL PD-03
- (D) PROP. CURB RAMP IMPROVEMENT, SEE DETAIL PD-04
- (E) PROP. CURB RAMP IMPROVEMENT, SEE DETAIL PD-05
- (F) PROP. CURB RAMP IMPROVEMENT, SEE DETAIL PD-06
- (G) PROP. CURB RAMP IMPROVEMENT, SEE CURB RAMP DESIGN DETAILS
- (H) PROP. CURB RAMP IMPROVEMENT, REPLACE DETECTABLE WARNING W/FULL WIDTH ONLY



PAVEMENT MARKING LEGEND:

- |   |   |   |  |
|---|---|---|--|
| ① | THERMOPLASTIC PAVEMENT MARKING - SKIP DASH, 4", 10' DASH - 30' SKIP YELLOW (TYP.)       | ⑦ | THERMOPLASTIC PAVEMENT MARKING - DIAGONALS, 12" YELLOW (TYP.)          |
| ② | THERMOPLASTIC PAVEMENT MARKING - DOUBLE YELLOW CENTERLINE, 4" (TYP.)                    | ⑧ | THERMOPLASTIC PAVEMENT MARKING - SCHOOL CROSSING, 12" WHITE (TYP.)     |
| ③ | THERMOPLASTIC PAVEMENT MARKING - MEDIAN EDGE LINE, 4" YELLOW (TYP.)                     | ⑨ | THERMOPLASTIC PAVEMENT MARKING - STOP BAR, 24" WHITE (TYP.)            |
| ④ | THERMOPLASTIC PAVEMENT MARKING - TURN LANE LINE, 6" WHITE (TYP.)                        | ⑩ | THERMOPLASTIC PAVEMENT MARKING - TRANSVERSE RAILROAD, 24" WHITE (TYP.) |
| ⑤ | THERMOPLASTIC PAVEMENT MARKING - DOTTED DASHED LINE, 6", 2' DASH - 6' SKIP WHITE (TYP.) | ⑪ | THERMOPLASTIC PAVEMENT MARKING - LETTERS & SYMBOLS WHITE (TYP.)        |
| ⑥ | THERMOPLASTIC PAVEMENT MARKING - CROSSWALK, 6" WHITE (TYP.)                             |   |  |

△ REVISED ENTIRE SHEET 5/28/2025

PLOT DATE = 5/6/2025	USER NAME = Phillip, Steed	DESIGNED -	REVISED -
		DRAWN -	REVISED -
		CHECKED -	REVISED -
	DATE -	REVISED -	

STATE OF ILLINOIS  
DEPARTMENT OF TRANSPORTATION

ROADWAY AND PAVEMENT MARKING PLANS  
NILES CENTER RD. (IL. ROUTE 58 (DEMPSTER ST.) TO MAIN ST.)

SCALE: 1"=50' SHEET 2 OF 2 SHEETS STA. 34+00.00 TO STA. 62+00.00

F.A.U RTE.	SECTION	COUNTY	TOTAL SHEETS	SHEET NO.
2798	2024-1030-RS	COOK	28	9
CONTRACT NO. 62X70				
ILLINOIS		FED. AID PROJECT		