

INDEX OF SHEETS

- 1 . COVER SHEET
- 2 . GENERAL NOTES
- 3 - 4 . SUMMARY OF QUANTITIES
- 5 . TYPICAL SECTIONS
- 6 - 7 . SCHEDULES
- 8 . DETAIL "A"
- 9 - 11 . CLASS A PAVEMENT PATCHING DETAILS
- 12 . TRAFFIC CONTROL AND PROTECTION, STANDARD 701400
- 13 . TYPICAL PAVEMENT MARKING

HIGHWAY STANDARDS

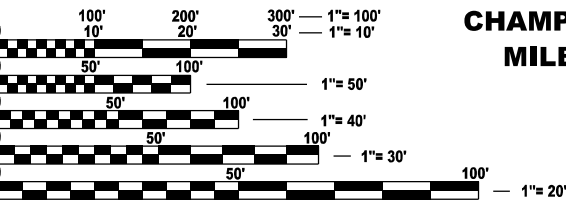
- 000001-08 STANDARD SYMBOLS, ABBREVIATIONS AND PATTERNS
- 001001-02 AREAS OF REINFORCEMENT BARS
- 001006 DECIMAL OF AN INCH AND OF A FOOT
- 701101-05 OFF-ROAD OPERATIONS, MULTILANE, 15' TO 24" FROM PAVEMENT EDGE
- 701106-02 OFF-ROAD OPERATIONS, MULTILANE, MORE THAN 15' AWAY
- 701401-13 LANE CLOSURE, FREEWAY/EXPRESSWAY
- 701411-09 LANE CLOSURE, MULTILANE, AT ENTRANCE OR EXIT RAMP  
FOR SPEEDS ≥ 45 MPH
- 701426-09 LANE CLOSURE, MULTILANE INTERMITTENT OR MOVING OPERATION,  
FOR SPEEDS ≥ 45 MPH
- 701420-01 TRAFFIC CONTROL, SETUP AND REMOVAL, FREEWAY/EXPRESSWAY
- 701901-10 TRAFFIC CONTROL DEVICES

STATE OF ILLINOIS  
DEPARTMENT OF TRANSPORTATION

PROPOSED  
HIGHWAY PLANS

F.A.I. ROUTE 57 (I-57)  
SECTION (10,27-38 & 1)PP-1  
PAVEMENT PATCHING  
FORD COUNTY

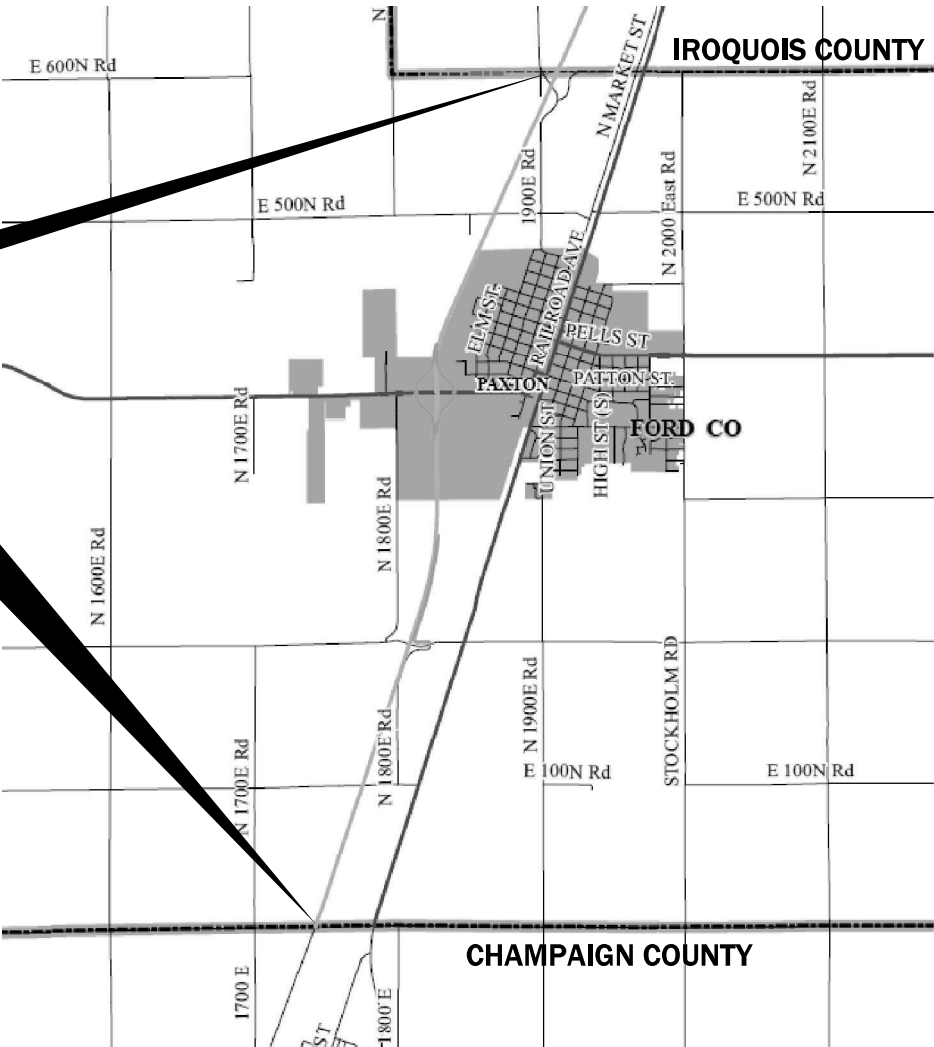
C-93-112-25



FULL SIZE PLANS HAVE BEEN PREPARED USING STANDARD  
ENGINEERING SCALES. REDUCED SIZED PLANS WILL NOT  
CONFORM TO STANDARD SCALES. IN MAKING MEASUREMENTS  
ON REDUCED PLANS, THE ABOVE SCALES MAY BE USED.

J.U.L.I.E.  
JOINT UTILITY LOCATION INFORMATION FOR EXCAVATION  
1-800-892-0123  
OR 811

PROJECT ENGINEER JUNIOR SENAT P.E.  
UNIT CHIEF RON WOODSHANK  
DISTRICT 3 (815) 434-6131  
CONTRACT NO. 66R54



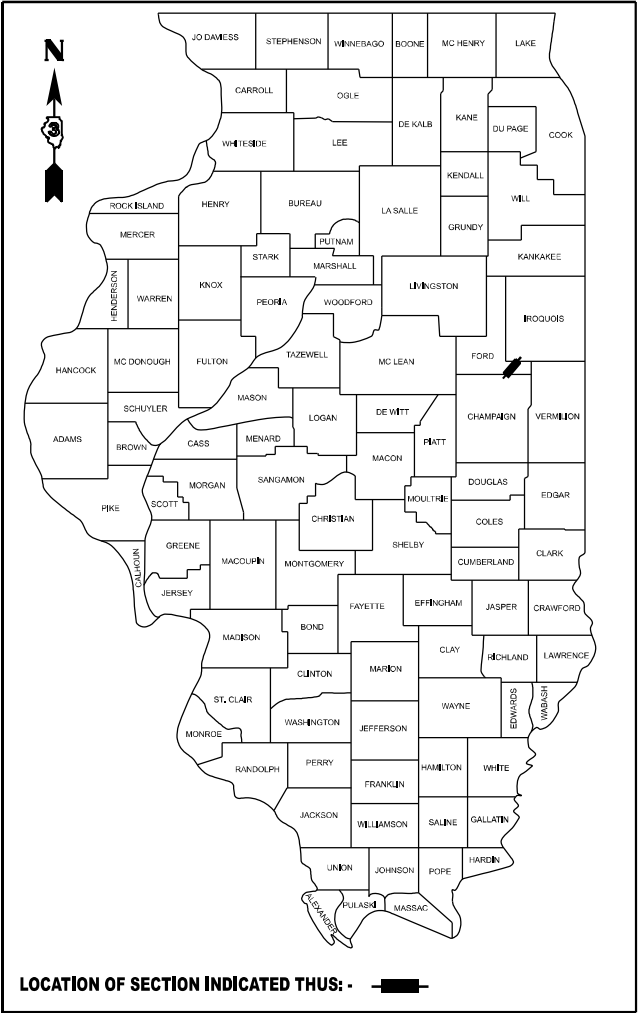
IMPROVEMENT ENDS  
IROQUOIS COUNTY LINE  
(MILE MARKER 263.51)

IMPROVEMENT BEGINS  
CHAMPAIGN COUNTY LINE  
MILE MARKER 257.08

GROSS LENGTH = 33,950 FT. = 6.43 MILES  
NET LENGTH = 811 FT. = 0.15 MILE

F.A.I. RTE.	SECTION	COUNTY	TOTAL SHEETS	SHEET NO.
57	(10,27-38&1)PP-1	FORD	13	1
ILLINOIS		CONTRACT NO. 66R54		

D-93-079-25



FUNCTIONAL CLASSIFICATION

RURAL - INTERSTATE

F.A.I. ROUTE 57 (I-57)

2023 ADT = 21,100

P.V. 68.6 % S.U. 3.0 % M.U. 28.4 %

STATE OF ILLINOIS  
DEPARTMENT OF TRANSPORTATION

SUBMITTED March 25, 2025  
*Trisha Thompson* REGIONAL ENGINEER  
May 9, 2025  
*Sec. A. Etk* ENGINEER OF DESIGN AND ENVIRONMENT  
May 9, 2025  
*Harry* DIRECTOR OF HIGHWAYS PROJECT IMPLEMENTATION

PRINTED BY THE AUTHORITY  
OF THE STATE OF ILLINOIS

GENERAL NOTES

ALL EXCAVATED MATERIAL, WHICH INCLUDES DIGGING OR GRADING OF ANY SOIL OR FILL MATERIAL, WITH THE EXCEPTION OF AGGREGATE FILLS, MUST BE INCORPORATED WITHIN THE IDOT RIGHT OF WAY.

THE CONTRACTOR SHALL NOTIFY THE DEPARTMENTS TRAFFIC SIGNAL SECTION WHEN PATCHING OPERATIONS ENCROACH NEAR INTERSTATE INTERCHANGES WITH OVERHEAD LIGHTING AT LEAST 72 HOURS PRIOR TO BEGINNING ANY PATCHING OPERATIONS NEAR THE IINTERCHANGE.

COMMITMENTS

NO COMMITMENTS

STATE OF ILLINOIS  
DEPARTMENT OF TRANSPORTATION  
DISTRICT THREE  
AS BUILT INFORMATION

SUPERVISING CONSTRUCTION FIELD ENGINEER

RESIDENT ENGINEER / TECHNICIAN

START & END DATES  
OF CONSTRUCTION:

INSPECTORS:

MODEL: Default  
FILE NAME: c:\pw\_work\pwid\woodshank\td1090629\66R54.dgn

	USER NAME = ronald.woodshank	DESIGNED - RW	REVISED -	STATE OF ILLINOIS DEPARTMENT OF TRANSPORTATION	GENERAL NOTES			F.A.I. RTE.	SECTION	COUNTY	TOTAL SHEETS	SHEET NO.
		DRAWN - RW	REVISED -					57	(10,27-38&1)PP-1	FORD	13	2
		CHECKED - JS	REVISED -					CONTRACT NO. 66R54				
	PLOT DATE = 3/4/2025	DATE - 2/6/2025	REVISED -		SCALE:	SHEET 1	OF 1	SHEETS	STA.	TO STA.	ILLINOIS FED. AID PROJECT	

MODEL: Default  
FILE NAME: c:\pw\_work\pwwd\woodshank\td02032\66R54.dgn

CODE NO.	ITEM	UNIT	TOTAL QUANTITY	CONSTRUCTION CODE
				CONTRACT MAINTENANCE
				100% STATE
				ROADWAY
				0006
				RURAL
44200565	CLASS A PATCHES, TYPE II, 11 INCH	SQ YD	206	206
44200569	CLASS A PATCHES, TYPE III, 11 INCH	SQ YD	163	163
44200571	CLASS A PATCHES, TYPE IV, 11 INCH	SQ YD	715	715
44213000	PATCHING REINFORCEMENT	SQ YD	1084	1084
44213200	SAW CUTS	FOOT	2486	2486
67100100	MOBILIZATION	L SUM	1	1
70100420	TRAFFIC CONTROL AND PROTECTION, STANDARD 701411	EACH	4	4
70100800	TRAFFIC CONTROL AND PROTECTION, STANDARD 701401	L SUM	1	1
70103815	TRAFFIC CONTROL SURVEILLANCE	CAL DA	15	15
70106700	TEMPORARY RUMBLE STRIPS	EACH	8	8
70107025	CHANGEABLE MESSAGE SIGN	CAL DA	15	15
* 78009004	MODIFIED URETHANE PAVEMENT MARKING - LINE 4"	FOOT	819	819
* 78009006	MODIFIED URETHANE PAVEMENT MARKING - LINE 6"	FOOT	200	200
Z0018911	DRILL AND GROUT #6 TIE BARS	EACH	178	178

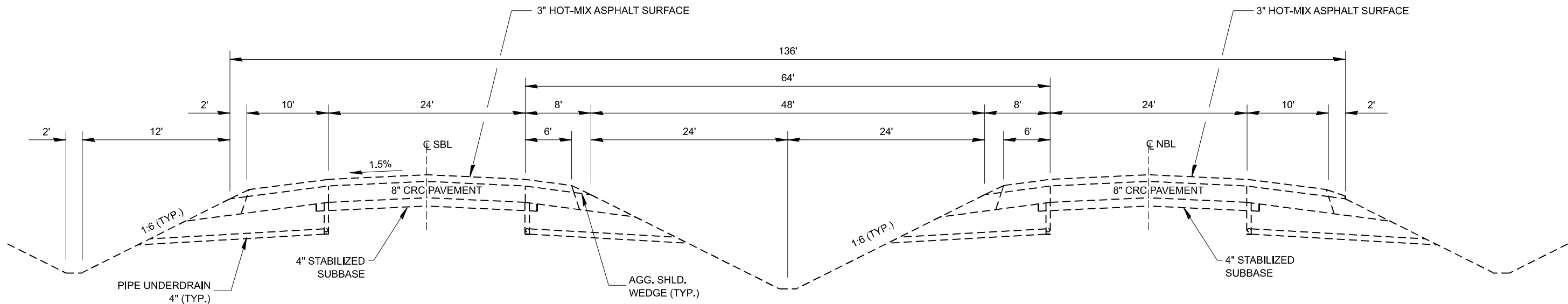
\*= SPECIALTY ITEM

	USER NAME = ronald.woodshank	DESIGNED - RW	REVISED -	STATE OF ILLINOIS DEPARTMENT OF TRANSPORTATION	SUMMARY OF QUANTITIES			F.A.I. RTE.	SECTION	COUNTY	TOTAL SHEETS	SHEET NO.
		DRAWN - RW	REVISED -					57	(10,27-38&1)PP-1	FORD	13	3
		CHECKED - JS	REVISED -					CONTRACT NO. 66R54				
	PLOT DATE = 2/7/2025	DATE - 2/6/2025	REVISED -		SCALE:	SHEET 1	OF 1	SHEETS	STA.	TO STA.	ILLINOIS FED. AID PROJECT	

MODEL: Default  
FILE NAME: c:\pw\_work\pwid\woodshank\td1090629\66R54.dgn

CODE NO.	ITEM	UNIT	TOTAL QUANTITY	CONSTRUCTION CODE
				CONTRACT MAINTENANCE
				100% STATE
				ROADWAY
				0006
				RURAL
Z0018913	DRILL AND GROUT #8 TIE BARS	EACH	864	864

	USER NAME = ronald.woodshank	DESIGNED - RW	REVISED -	STATE OF ILLINOIS DEPARTMENT OF TRANSPORTATION	SUMMARY OF QUANTITIES			F.A.I. RTE.	SECTION	COUNTY	TOTAL SHEETS	SHEET NO.
		DRAWN - RW	REVISED -					57	(10,27-38&1)PP-1	FORD	13	4
		CHECKED - JS	REVISED -					CONTRACT NO. 66R54				
	PLOT DATE = 3/4/2025	DATE - 2/6/2025	REVISED -		SCALE:	SHEET 1	OF 1	SHEETS	STA.	TO STA.	ILLINOIS FED. AID PROJECT	



**TYPICAL SECTION (F.A.I.57)**  
**MILE MARKER 257.08 - MILE MARKER 263.51**

MODEL: Default  
FILE NAME: c:\p\work\p\woodshank\fd092032\66R54.dgn

	USER NAME = ronald.woodshank	DESIGNED - RW	REVISED -	STATE OF ILLINOIS DEPARTMENT OF TRANSPORTATION	EXISTING TYPICAL SECTIONS			F.A.I. RTE.	SECTION	COUNTY	TOTAL SHEETS	SHEET NO.
		DRAWN - RW	REVISED -					57	(10,27-38&1)PP-1	FORD	13	5
		CHECKED - JS	REVISED -					CONTRACT NO. 66R54				
	PLOT DATE = 2/7/2025	DATE - 2/6/2025	REVISED -		SCALE:	SHEET 1 OF 1 SHEETS	STA.	TO STA.	ILLINOIS FED. AID PROJECT			

## PATCHING SCHEDULE

LOCATION	NORTHBOUND PASSING LANE											NORTHBOUND DRIVING LANE										
	PATCH LENGTH	PATCH WIDTH	CLASS A PATCHING			CLASS A PATCH EXPANSION JOINT	PATCH REINFORCEMENT	SAW CUTS	DRILL AND GROUT #6 TIE BARS	DRILL AND GROUT #8 TIE BARS	COMMENTS	PATCH LENGTH	PATCH WIDTH	CLASS A PATCHING			CLASS A PATCH EXPANSION JOINT	PATCH REINFORCEMENT	SAW CUTS	DRILL AND GROUT #6 TIE BARS	DRILL AND GROUT #8 TIE BARS	COMMENTS
			TYPE II 11"	TYPE III 11"	TYPE IV 11"									TYPE II 11"	TYPE III 11"	TYPE IV 11"						
MILE MARKER	FEET	FEET	SQ YD	SQ YD	SQ YD	FOOT	SQ YD	FOOT	EACH	EACH		FEET	FEET	SQ YD	SQ YD	SQ YD	FOOT	SQ YD	FOOT	EACH	EACH	
257.08	CHAMPAIGN COUNTY LINE																					
258.1												8	12	11				11	40		24	
258.4												10	12	13				13	44		24	
258.7	24	12			32		32	72	8	24	MATCH EXISTING DL PATCH											
258.7												10	12	13			12	13	44		24	REPLACE EXISTING EXPANSION JOINT
259.3												16	12		21			21	56		24	REMOVE EXISTING PATCH
*259.3	8	12	11				11	40		24		8	12	11				11	40		24	
260.4												8	12	11				11	40		24	
260.5												16	12		21			21	56		24	REMOVE EXISTING PATCH
260.5	30	12			40		40	84	10	24		30	12			40		40	84	10	24	
260.8												24	12			32		32	72	8	24	REMOV E EXISTING PATCHES
260.9												10	12	13				13	44		24	
*261.8	12	12		16			16	48		24		12	12		16			16	48		24	
261.9												8	12	11				11	40		24	
262.3												210	12			280		280	444	70	24	SEE DETAIL "A"
262.4												164	12			219		219	352	54	24	SEE DETAIL "A"
*262.4	12	12		16			16	48		24		12	12		16			16	48		24	
263.1												8	12	11				11	40		24	
263.51	IROQUOIS COUNTY LINE																					
NB TOTALS	86	60	11	32	72	0	115	292	18	120		554	192	94	74	571	12	739	1492	142	384	
INDICATES PATCH LOCATIONS ARE ADJACENT																						

INDICATES PATCH LOCATIONS AR ADJACENT

## PATCHING SCHEDULE

LOCATION	SOUTHBOUND PASSING LANE										SOUTHBOUND DRIVING LANE											
	PATCH LENGTH	PATCH WIDTH	CLASS A PATCHING			CLASS A PATCH EXPANSION JOINT	PATCH REINFORCEMENT	SAW CUT	DRILL AND GROUT #6 TIE BARS	DRILL AND GROUT #8 TIE BARS	COMMENTS	PATCH LENGTH	PATCH WIDTH	CLASS A PATCHING			CLASS A PATCH EXPANSION JOINT	PATCH REINFORCEMENT	SAW CUT	DRILL AND GROUT #6 TIE BARS	DRILL AND GROUT #8 TIE BARS	COMMENTS
			TYPE II 11"	TYPE III 11"	TYPE IV 11"									TYPE II 11"	TYPE III 11"	TYPE IV 11"						
MILE MARKER	FEET	FEET	SQ YD	SQ YD	SQ YD	FOOT	SQ YD	FOOT	EACH	EACH		FEET	FEET	SQ YD	SQ YD	SQ YD	FOOT	SQ YD	FOOT	EACH	EACH	
263.51	IROQUOIS COUNTY LINE																					
*263.4	6	12	8				8	36		24		6	12	8				8	36		24	
262.8												24	12			32		32	72	8	24	REMOVE EXISTING PATCHES
262.3												8	12	11				11	40		24	
262.1												8	12	11				11	40		24	
262.1	8	12	11				11	40		24		16	12		21			21	56		24	REMOVE EXISTING PATCH
261.7	6	12	8				8	36		24												
*259.2	8	12	11				11	40		24		8	12	11				11	40		24	
259.2												8	12	11				11	40		24	
258.9												14	12		19			19	52		24	
258.8	13	12		17			17	50		24												
258.8												30	12			40		40	84	10	24	
258.8											MATCH EXISTING DL PATCH	8	12	11				11	40		24	
257.08	CHAMPAIGN COUNTY LINE																					
SB PL TOTALS	41	60	38	17	0	0	55	202	0	120		130	120	63	40	72	0	175	500	18	240	

\*INDICATES PATCH LOCATIONS AR ADJACENT

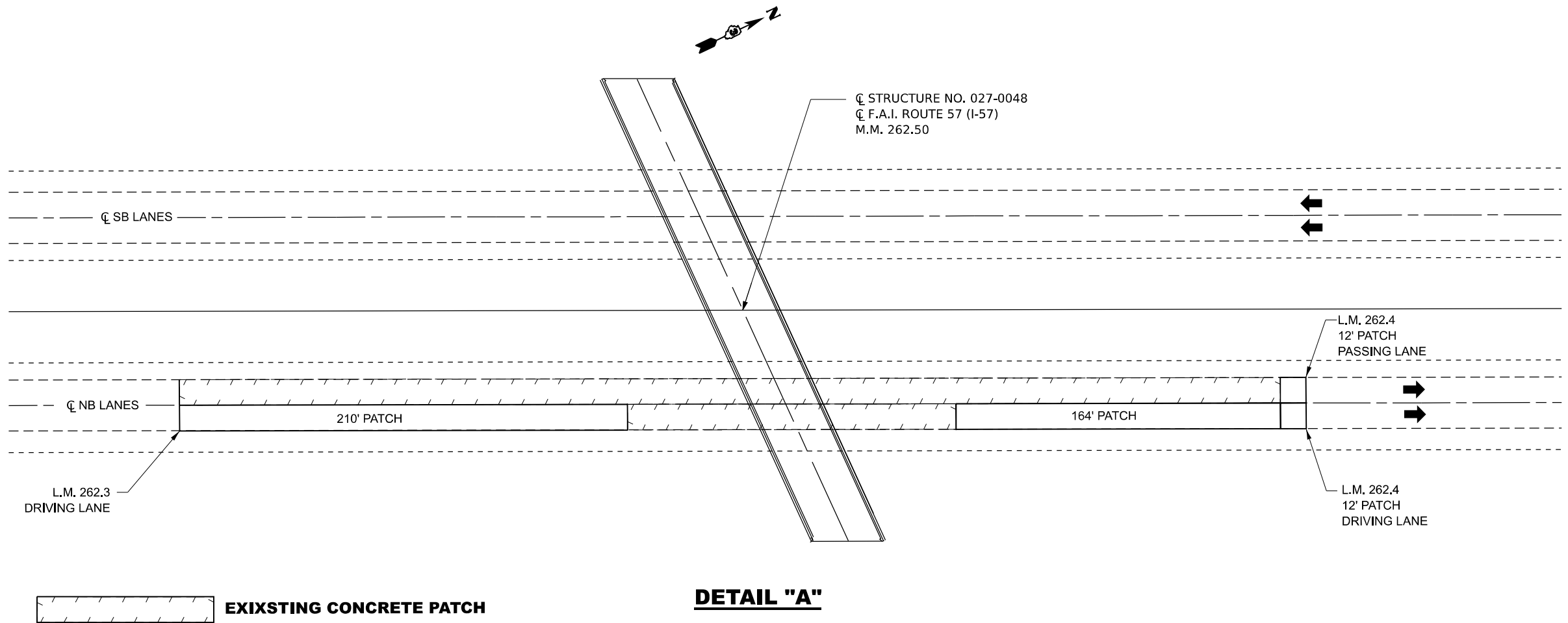
MODEL: Default  
FILE NAME: c:\pw\_work\pwwd\woodshank\td02032\66R54.dgn

SCHEDULE - PAVEMENT MARKING

LOCATION	NORTHBOUND LANE			
	PATCH LENGTH	MODIFIED URETHANE PAVEMENT MARKING LINE - 4"		MODIFIED URETHANE PAVEMENT MARKING LINE - 6"
	FEET	SQ YD		SQ YD
MILE MARKER		YELLOW	WHITE	WHITE
257.08	CHAMPAIGN COUNTY LINE			
258.1	8		8	
258.4	10		10	
258.7	24	24		30
258.7	10		10	
259.3	16		16	
*259.3	8	8	8	10
260.4	8		8	
260.5	16		16	
260.5	30	30	30	30
260.8	24		24	
260.9	10		10	
*261.8	12	12	12	20
261.9	8		8	
262.3	210		210	
262.4	164		164	
*262.4	12	12	12	20
263.1	8		8	
263.51	IROQUOIS COUNTY LINE			
NB TOTALS	578	86	554	110

SCHEDULE - PAVEMENT MARKING

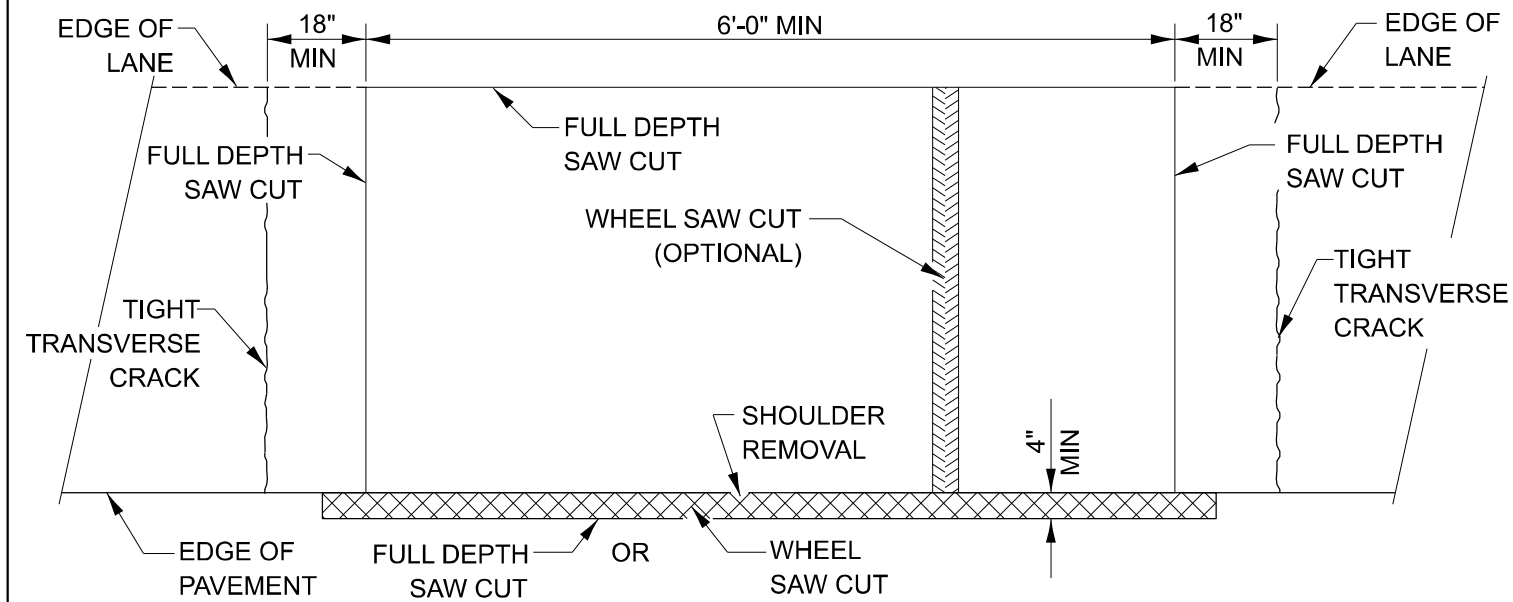
LOCATION	SOUTHBOUND LANE			
	PATCH LENGTH	MODIFIED URETHANE PAVEMENT MARKING LINE - 4"		MODIFIED URETHANE PAVEMENT MARKING LINE - 6"
	FEET	FEET		FEET
MILE MARKER		YELLOW	WHITE	WHITE
263.51	FORD COUNTY LINE			
*263.4	6	6	6	10
262.8	24		24	
262.3	8		8	
262.1	8		8	
262.1	16	16	16	20
261.7	6	6		10
*259.2	8	8	8	10
259.2	8		8	
258.9	14		14	
258.8	13	13		20
258.8	30		30	
258.8	8		8	20
257.08	CHAMPAIGN COUNTY LINE			
SB TOTALS	149	49	130	90



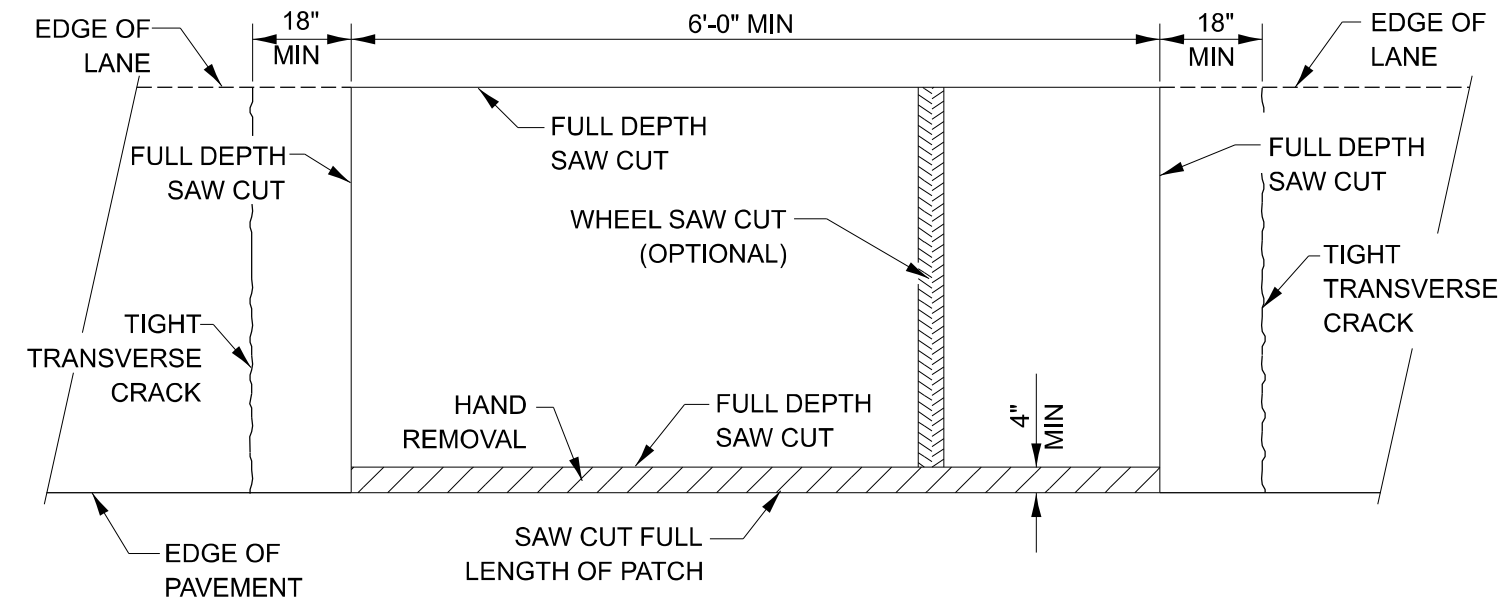
MODEL: Default  
FILE NAME: c:\pwworkspace\woodshank\1002032\66R54.dgn

	USER NAME = ronald.woodshank	DESIGNED - RW	REVISED -	STATE OF ILLINOIS DEPARTMENT OF TRANSPORTATION	DETAIL "A"			F.A.I. RTE.	SECTION	COUNTY	TOTAL SHEETS	SHEET NO.
		DRAWN - RW	REVISED -					57	(10,27-38&1)PP-1	FORD	13	8
		CHECKED - JS	REVISED -					CONTRACT NO. 66R54				
	PLOT DATE = 2/7/2025	DATE - 2/6/2025	REVISED -		SCALE:	SHEET 1	OF 1	SHEETS	STA.	TO STA.	ILLINOIS FED. AID PROJECT	

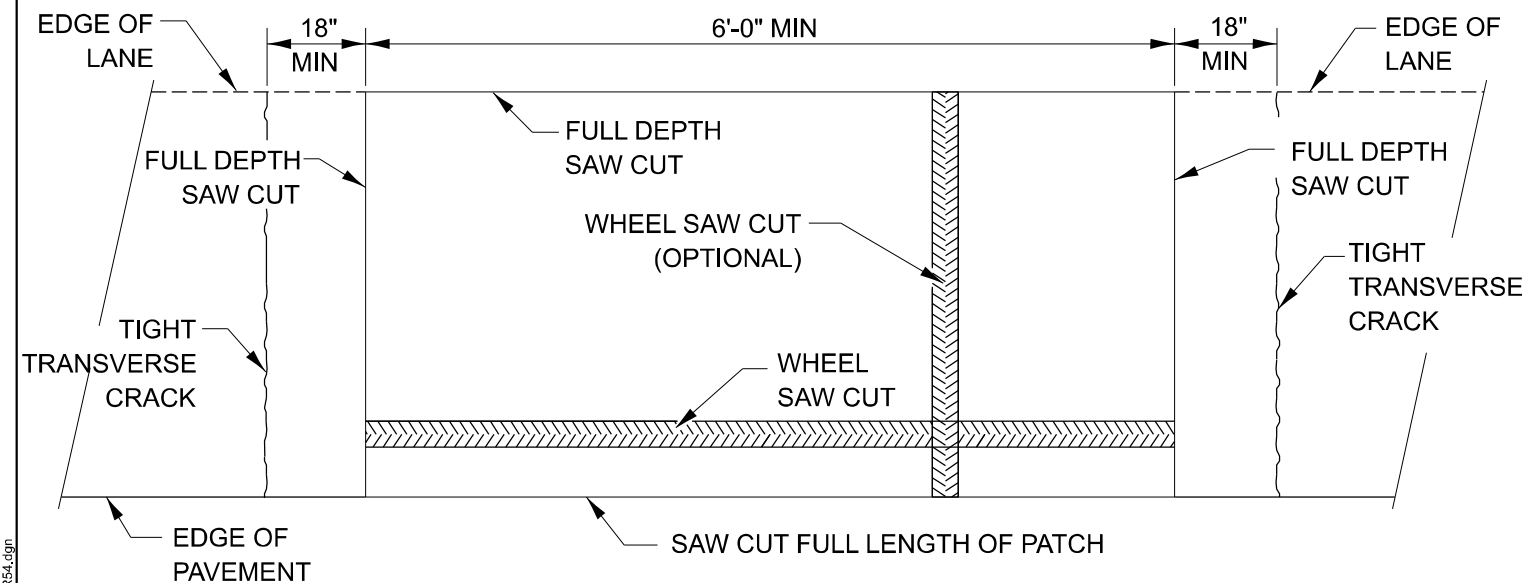




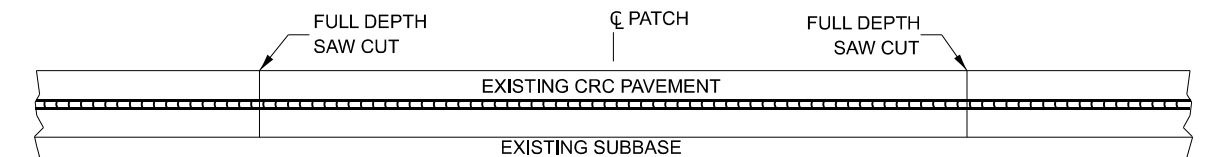
**PAVEMENT SAWING DETAIL**  
**(HMA SHOULDER)**



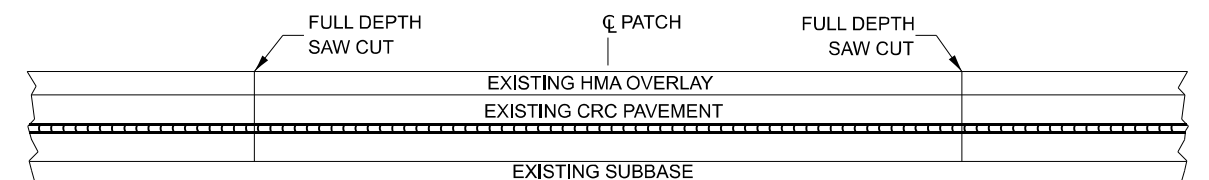
**PAVEMENT SAWING DETAIL**  
**(PCC SHOULDER)**



**ALTERNATE SAWING DETAIL**  
**(PCC SHOULDER)**



**EXISTING PAVEMENT WITHOUT HMA SURFACE**



**EXISTING PAVEMENT WITH HMA SURFACE**

**PAVEMENT SAWING DETAIL FOR CLASS A PATCHING**  
**(CRC PAVEMENT)**

MODEL: Default  
FILE NAME: c:\pwwork\woodshank\092032\66R54.dgn

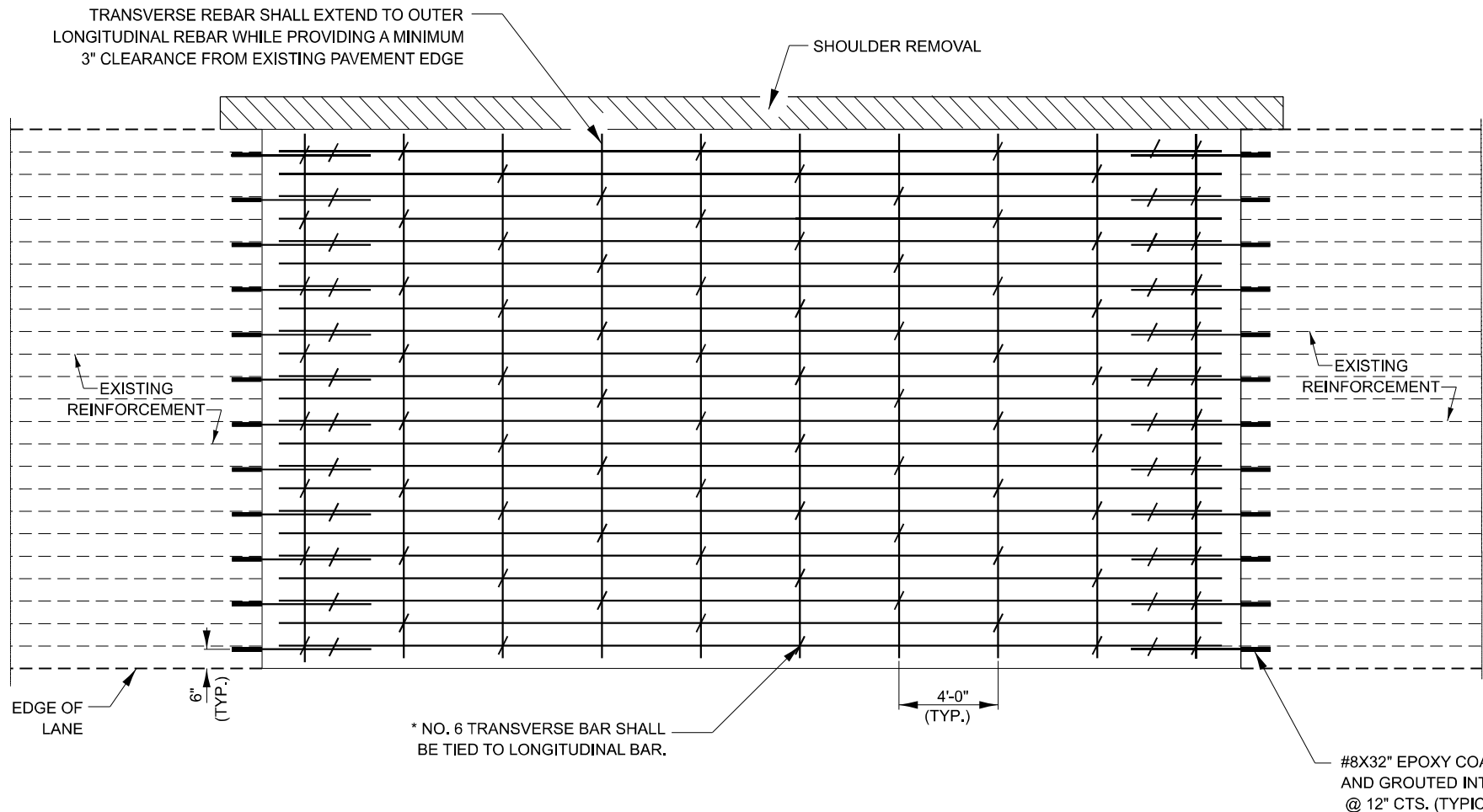
USER NAME = ronald.woodshank	DESIGNED - RW	REVISED -
	DRAWN - RW	REVISED -
	CHECKED - JS	REVISED -
PLOT DATE = 2/7/2025	DATE - 2/6/2025	REVISED -

STATE OF ILLINOIS  
DEPARTMENT OF TRANSPORTATION

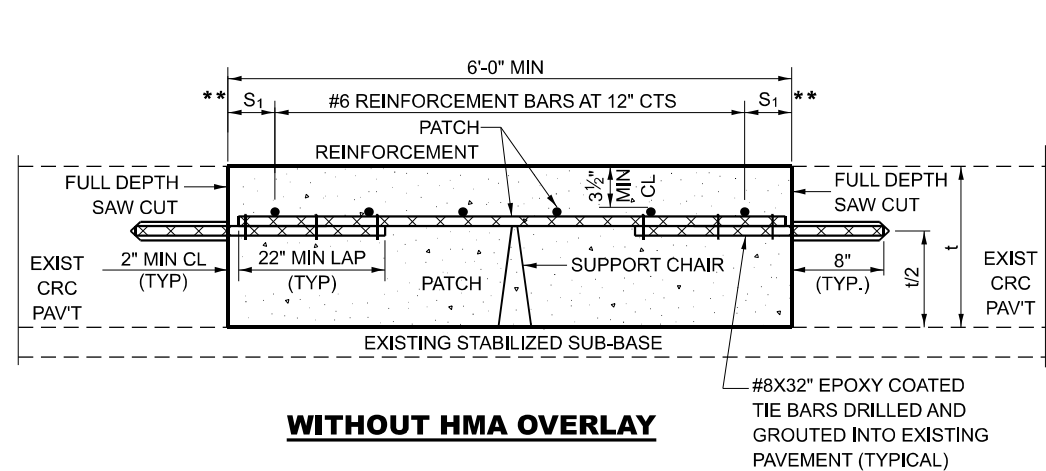
CLASS A PAVEMENT PATCHING DETAILS

SCALE: SHEET 1 OF 3 SHEETS STA. TO STA.

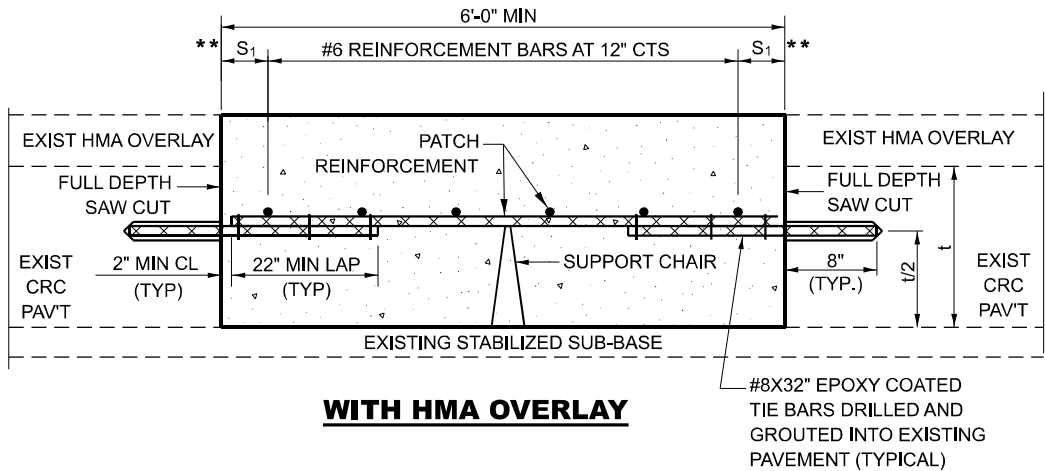
F.A.I. RTE.	SECTION	COUNTY	TOTAL SHEETS	SHEET NO.
57	(10,27-38&1)PP-1	FORD	13	9
CONTRACT NO. 66R54				
ILLINOIS FED. AID PROJECT				



**PAVEMENT REINFORCEMENT DETAIL**

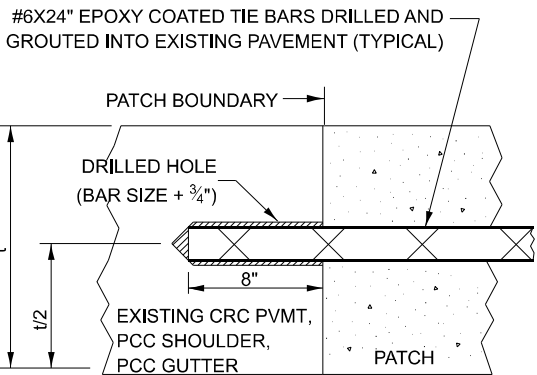


**WITHOUT HMA OVERLAY**



**WITH HMA OVERLAY**

**PATCHING DETAIL FOR CLASS A PATCHING  
(CRC PAVEMENT)**



**LONGITUDINAL CONSTRUCTION JOINT**

PATCHES MORE THAN 20' IN LENGTH SHALL BE TIED TO ADJACENT PAVEMENT, PCC SHOULDERS OR PCC CURB AND GUTTER WITH #6x24" EPOXY COATED TIE BARS AT 36" CENTERS.

**NOTES:**

SPACING OF NEW LONGITUDINAL REINFORCEMENT SHALL MATCH THE SPACING OF EXISTING REINFORCEMENT AND SHALL BE TIED TOGETHER WITH A MINIMUM OF TWO TIES PER BAR.

TRANSVERSE CONSTRUCTION JOINTS: #8 X 32" EPOXY COATED TIE BAR SHALL BE DRILLED AND GROUTED INTO THE EXISTING PCC PAVEMENT AT A SPACING OF ± TWICE THE SPACING OF EXISTING LONGITUDINAL REINFORCEMENT BARS AND SHALL BE TIED TO PROPOSED LONGITUDINAL REINFORCEMENT WITH A MINIMUM OF TWO TIES PER BAR WHEN PRACTICAL.

\* EVERY THIRD INTERSECTION MUST BE TIED. WHEN THE MINIMUM CLEARANCE CANNOT BE OBTAINED WITH THE TRANSVERSE REBAR ON TOP, THEN THE TRANSVERSE REBAR SHALL BE TIED TO THE BOTTOM OF THE LONGITUDINAL REBAR.

\*\* VARIABLE: WHERE S<sub>1</sub> IS 2½" MIN. AND 12" MAX.

MODEL: Default  
FILE NAME: c:\pwwork\woodshank\td1090629\66R54.dgn

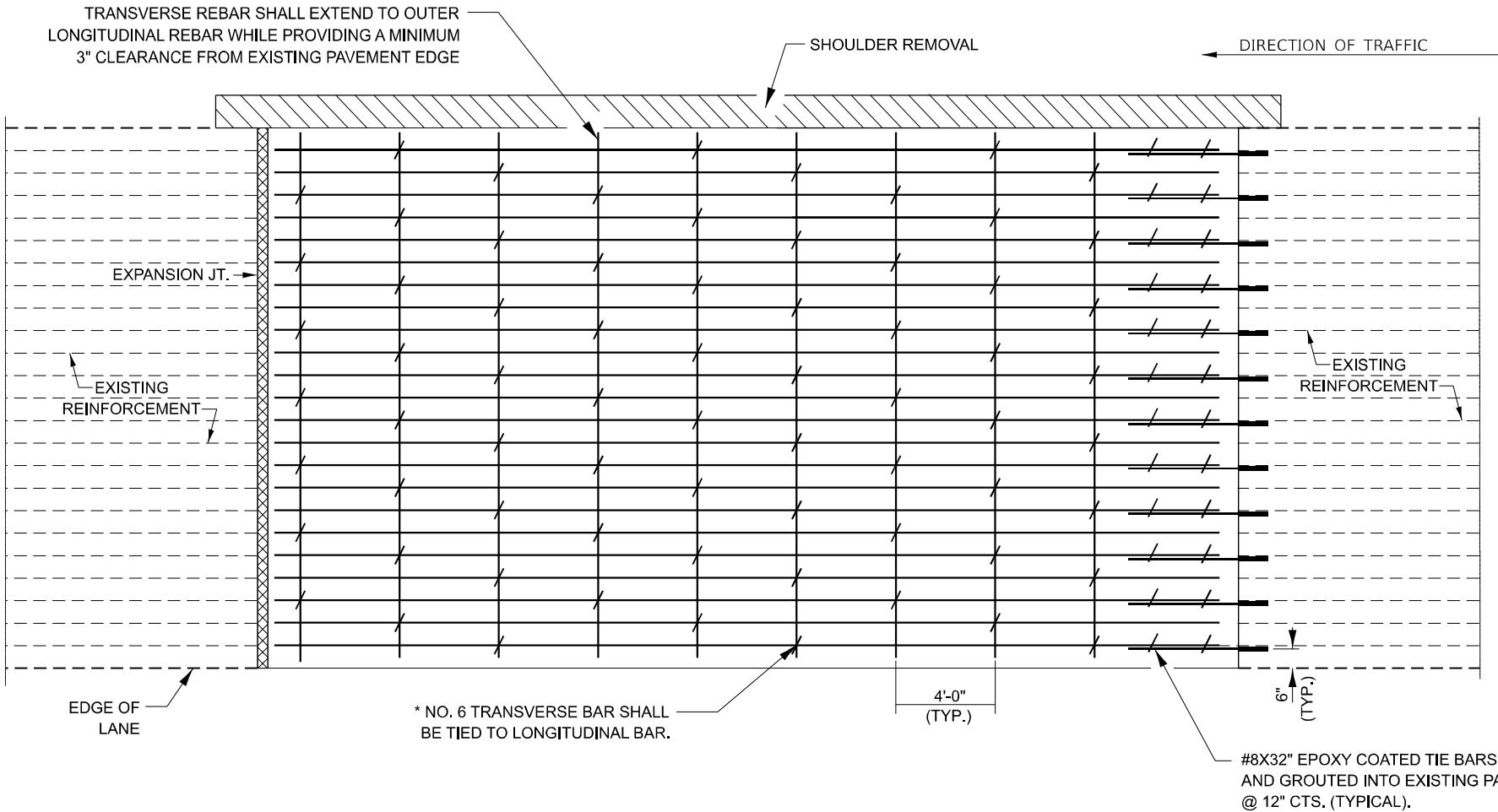
USER NAME = ronald.woodshank	DESIGNED - RW	REVISED -
	DRAWN - RW	REVISED -
	CHECKED - JS	REVISED -
PLOT DATE = 3/4/2025	DATE - 2/6/2025	REVISED -

STATE OF ILLINOIS  
DEPARTMENT OF TRANSPORTATION

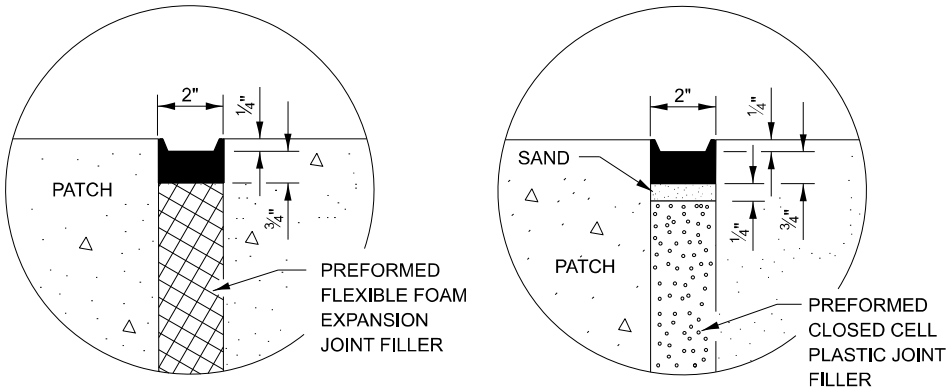
**CLASS A PAVEMENT PATCHING DETAILS**

SCALE: SHEET 2 OF 3 SHEETS STA. TO STA.

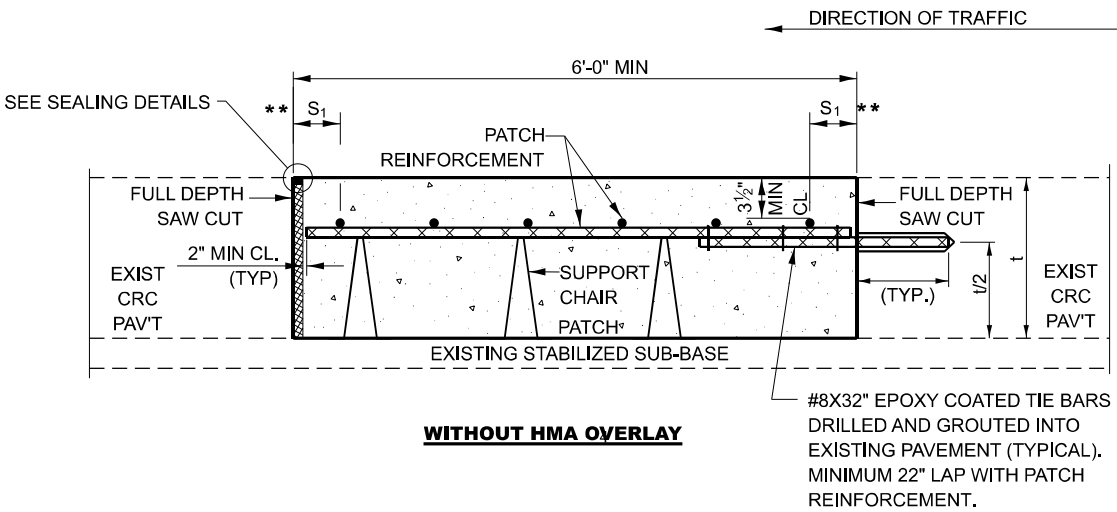
F.A.I. RTE.	SECTION	COUNTY	TOTAL SHEETS	SHEET NO.
57	(10,27-38&1)PP-1	FORD	13	10
CONTRACT NO. 66R54				
ILLINOIS FED. AID PROJECT				



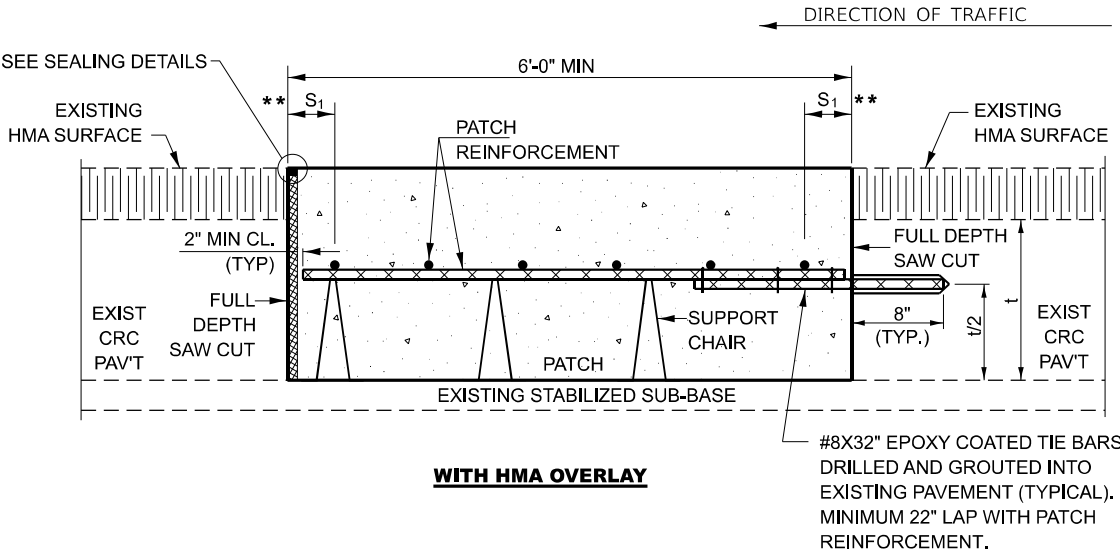
PAVEMENT REINFORCEMENT DETAIL



SEALING DETAILS



WITHOUT HMA OVERLAY



WITH HMA OVERLAY

CLASS A PATCH WITH EXPANSION JOINT

MODEL: Default  
FILE NAME: c:\pwworkspace\woodshank\1002032\66R54.dgn

USER NAME = ronald.woodshank	DESIGNED - RW	REVISED -
	DRAWN - RW	REVISED -
	CHECKED - JS	REVISED -
PLOT DATE = 2/7/2025	DATE - 2/6/2025	REVISED -

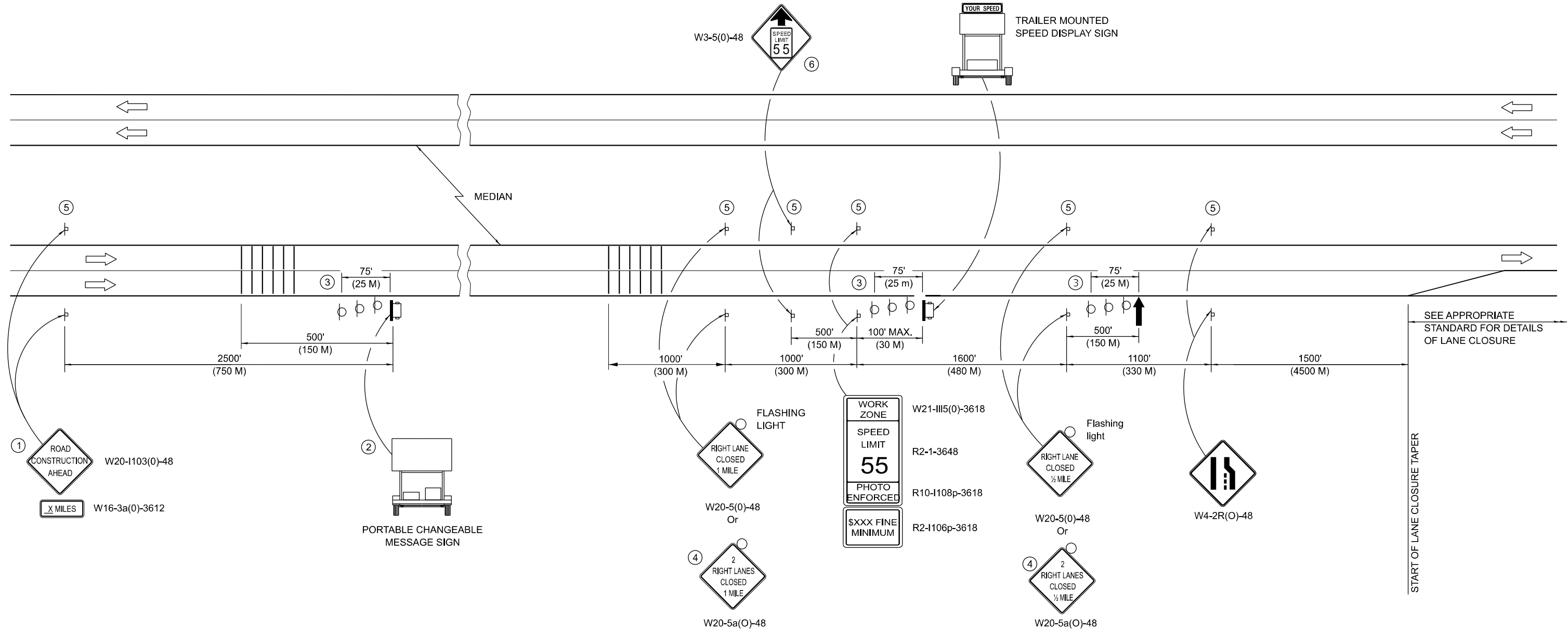
STATE OF ILLINOIS  
DEPARTMENT OF TRANSPORTATION

CLASS A PAVEMENT PATCHING DETAILS

SCALE: SHEET 3 OF 3 SHEETS STA. TO STA.

F.A.I. RTE.	SECTION	COUNTY	TOTAL SHEETS	SHEET NO.
57	(10,27-38&1)PP-1	FORD	13	11
CONTRACT NO. 66R54				
ILLINOIS FED. AID PROJECT				

MODEL: Default  
FILE NAME: c:\pwwork\woodshank\td1090629\66R54.dgn



### SYMBOLS

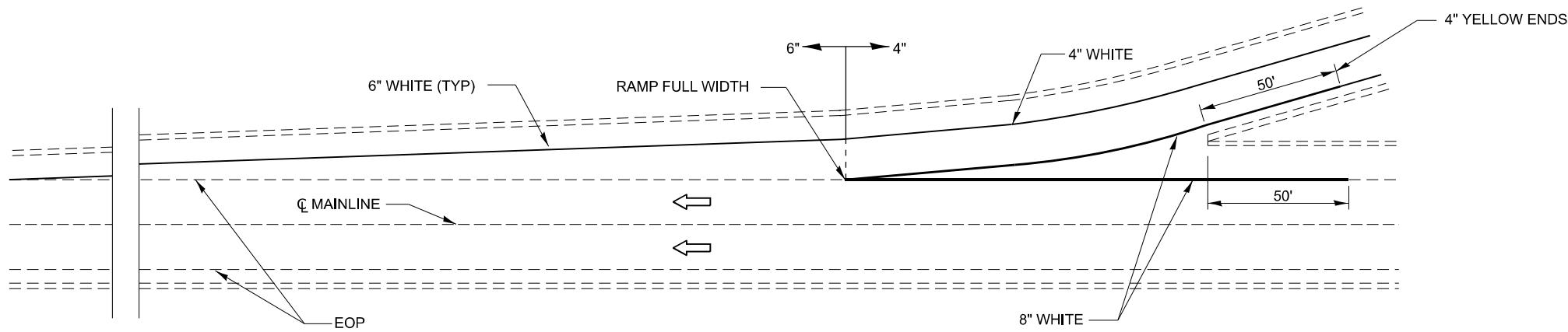
- ↑ ARROW BOARD
- ☐ TRAILER MOUNTED SIGN
- ☐ SIGN
- ☐ TYPE II BARRICADE, DRUM, OR VERTICAL BARRICADE WITH MONODIRECTIONAL FLASHING LIGHT
- ||||| TEMPORARY RUMBLE STRIP

- THE ROAD CONSTRUCTION AHEAD SIGN SHALL BE LOCATED 3 TO 5 MILES IN ADVANCE OF THE PROJECT LIMITS.
- THE MESSAGE BOARD SHALL BE USED TO DISPLAY STATUS OF LANES WITHIN THE PROJECT. THE PRIMARY MESSAGES SHALL BE:  
  
"RIGHT LANE CLOSED" / " X MILES AHEAD"  
"LEFT LANE CLOSED" / " X MILES AHEAD"  
"ALL LANES OPEN"
- THREE, TYPE II BARRICADES, DRUMS, OR VERTICAL BARRICADES AT 25' (8 M) CENTERS.
- THIS SIGN SHALL BE USED WHEN 2 LANES ARE CLOSED.
- THIS SIGN SHALL BE OMITTED WHEN MEDIAN WIDTH IS LESS THAN 10' (3 M).
- THIS SIGN SHALL ONLY BE USED IF THE EXISTING SPEED LIMIT IS GREATER THAN 65 MPH.

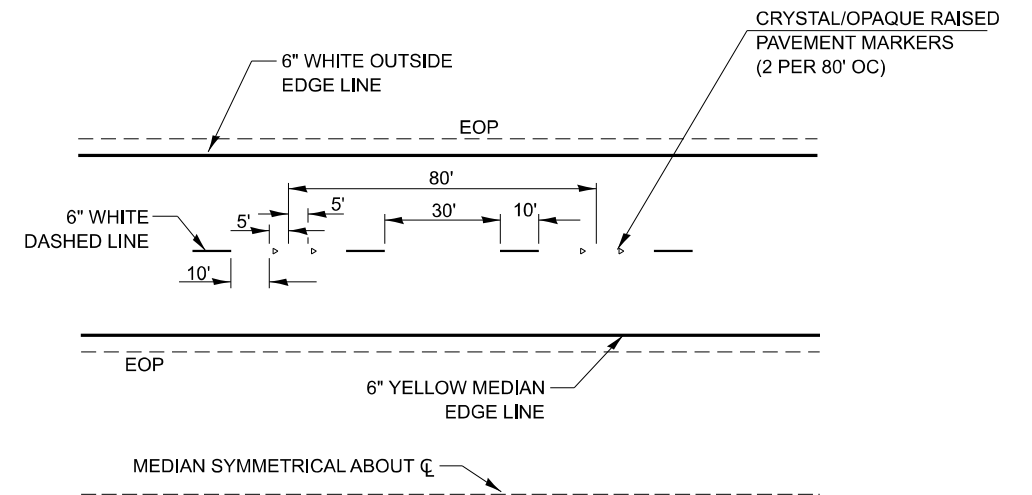
### GENERAL NOTES

- THIS STANDARD IS USED WHERE AT ANY TIME A LANE IS CLOSED ON A FREEWAY/EXPRESSWAY. WHEN THE LEFT LANE IS CLOSED, LEFT LANE CLOSED SIGNS SHALL BE SUBSTITUTED FOR THE RIGHT LANE CLOSED SIGNS.
- THE FIRST SIGN AND THE MESSAGE BOARD ARE STATIONARY.
- THE LAST FOUR SIGNS AND ARROW BOARD SHALL BE MOVED AS NECESSARY TO MAINTAIN THE REQUIRED DISTANCE FROM THE START OF THE LANE CLOSURE TAPER(S).
- ALL DIMENSIONS ARE IN INCHES (MILLIMETERS) UNLESS OTHERWISE SHOWN.

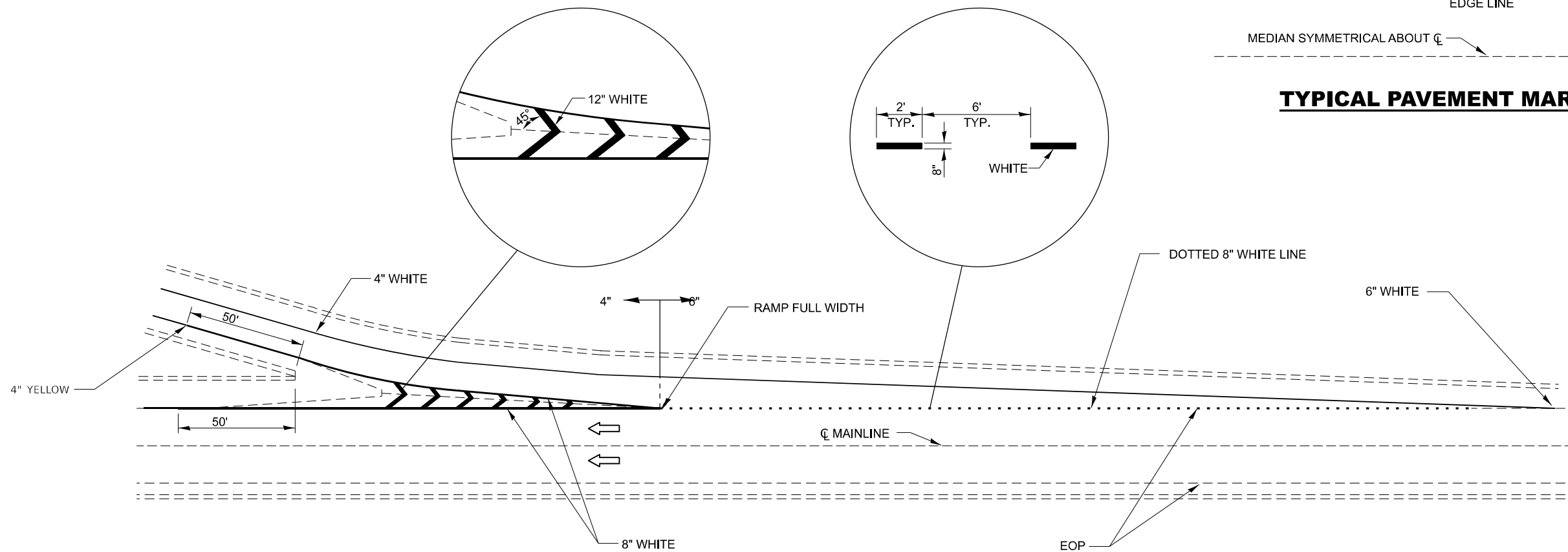
	USER NAME = ronald.woodshank	DESIGNED - RW	REVISED -	STATE OF ILLINOIS DEPARTMENT OF TRANSPORTATION	TRAFFIC CONTROL AND PROTECTION, STANDARD 701400			F.A.I. RTE.	SECTION	COUNTY	TOTAL SHEETS	SHEET NO.
		DRAWN - RW	REVISED -					57	(10,27-38&1)PP-1	FORD	13	12
		CHECKED - JS	REVISED -		CONTRACT NO. 66R54							
	PLOT DATE = 3/4/2025	DATE - 2/6/2025	REVISED -		ILLINOIS FED. AID PROJECT							
	SCALE:				SHEET 1 OF 1 SHEETS	STA.	TO STA.					



**TYPICAL PAVEMENT MARKING FOR ENTRANCE RAMP TERMINALS**



**TYPICAL PAVEMENT MARKINGS**



**TYPICAL PAVEMENT MARKINGS FOR EXIT RAMP TERMINALS**

MODEL: Default  
FILE NAME: c:\pwwork\woodshank\td0920202\66R54.dgn

USER NAME = ronald.woodshank	DESIGNED - RW	REVISED -
	DRAWN - RW	REVISED -
	CHECKED - JS	REVISED -
PLOT DATE = 2/7/2025	DATE - 2/6/2025	REVISED -

STATE OF ILLINOIS  
DEPARTMENT OF TRANSPORTATION

TYPICAL PAVEMENT MARKING

SCALE: SHEET 1 OF 1 SHEETS STA. TO STA.

F.A.I. RTE.	SECTION	COUNTY	TOTAL SHEETS	SHEET NO.
57	(10,27-38&1)PP-1	FORD	13	13
CONTRACT NO. 66R54				
ILLINOIS FED. AID PROJECT				