

06-13-2025 LETTING ITEM 077

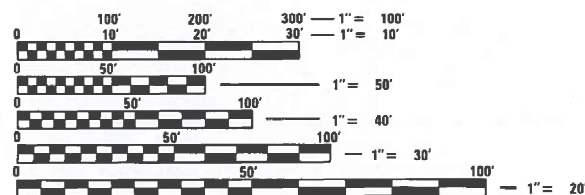
INDEX OF SHEETS

- 1 COVER SHEET
- 2 GENERAL NOTES AND COMMITMENTS
- 3 SUMMARY OF QUANTITIES
- 4 PLAN SHEET
- 5 PHOTOGRAPHS OF EXISTING CONDITIONS
- 6 STAGING TYPICAL SECTIONS
- 7 STRUCTURE INFORMATION

HIGHWAY STANDARDS

000001-08 STANDARD SYMBOLS, ABBREVIATIONS AND PATTERNS
701001-02 OFF-RD OPERATIONS, 2L, 2W, MORE THAN 15' (4.5 m) AWAY
701006-05 OFF-RD OPERATIONS, 2L, 2W, 15' (4.5 m) TO 24" (600 mm) FROM PAVEMENT EDGE
701011-04 OFF-RD MOVING OPERATIONS 2L, 2W, DAY ONLY
701201-05 LANE CLOSURE, 2L 2W, DAY ONLY, FOR SPEEDS \geq 45 MPH
701901-10 TRAFFIC CONTROL DEVICES

DESIGN DESIGNATION
IL 95: MINOR ARTERIAL
ADT: 1400 (2023)
SU: 70
MU: 20



FULL SIZE PLANS HAVE BEEN PREPARED USING STANDARD ENGINEERING SCALES. REDUCED SIZED PLANS WILL NOT CONFORM TO STANDARD SCALES. IN MAKING MEASUREMENTS ON REDUCED PLANS, THE ABOVE SCALES MAY BE USED.

J.U.L.I.E.
JOINT UTILITY LOCATION INFORMATION FOR EXCAVATORS
1-800-892-0123
OR 811

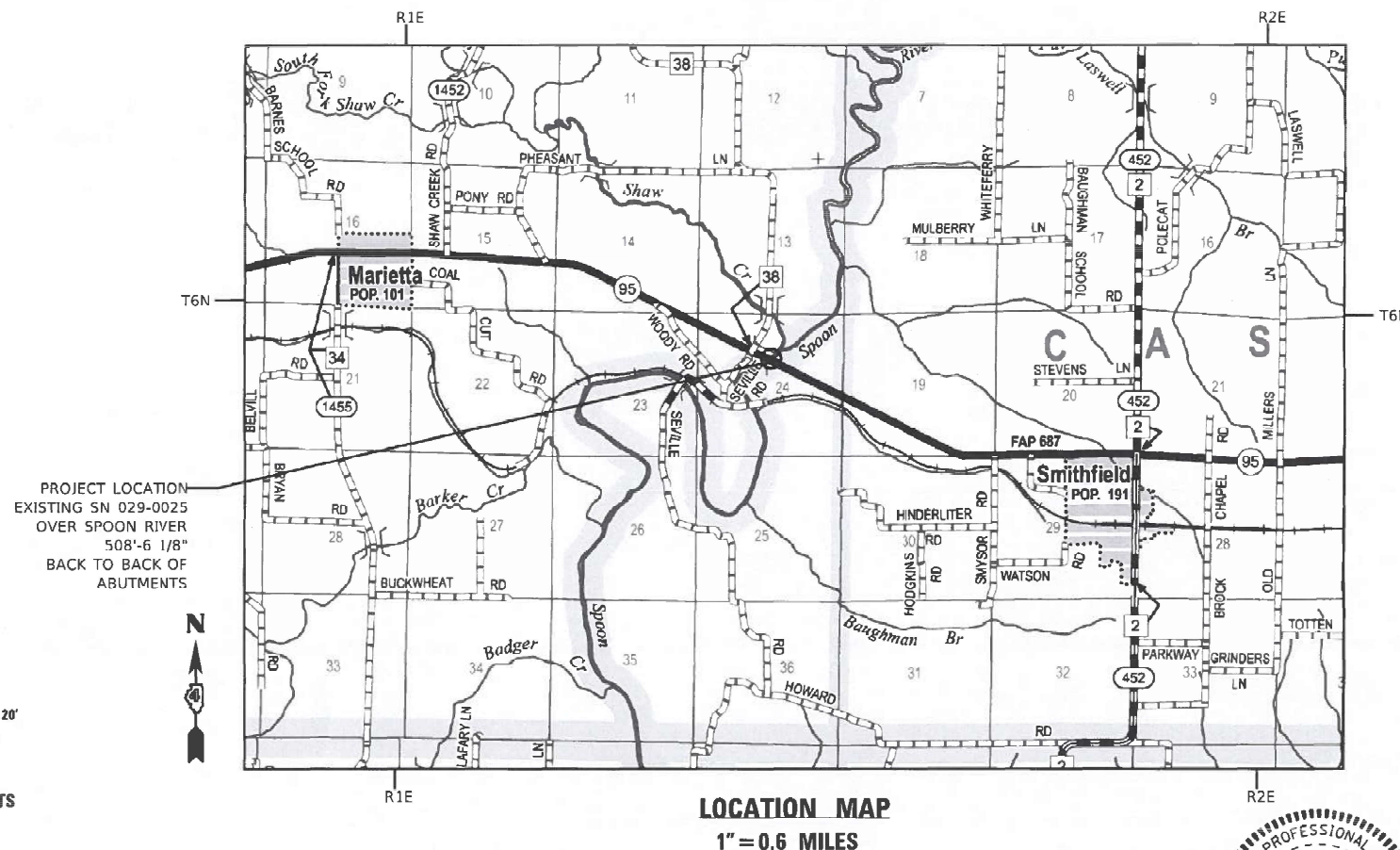
PROJECT ENGINEER: BEN TELLEFSON
PROJECT MANAGER: MARK ECKHOFF
CONTRACT NO. 68J44
CATALOG NO. 036548-00D

STATE OF ILLINOIS DEPARTMENT OF TRANSPORTATION DIVISION OF HIGHWAYS

PROPOSED HIGHWAY PLANS

FAP ROUTE 687 (IL 95)
SECTION (123B)I-2
DEBRIS REMOVAL
FULTON COUNTY

C-94-096-24

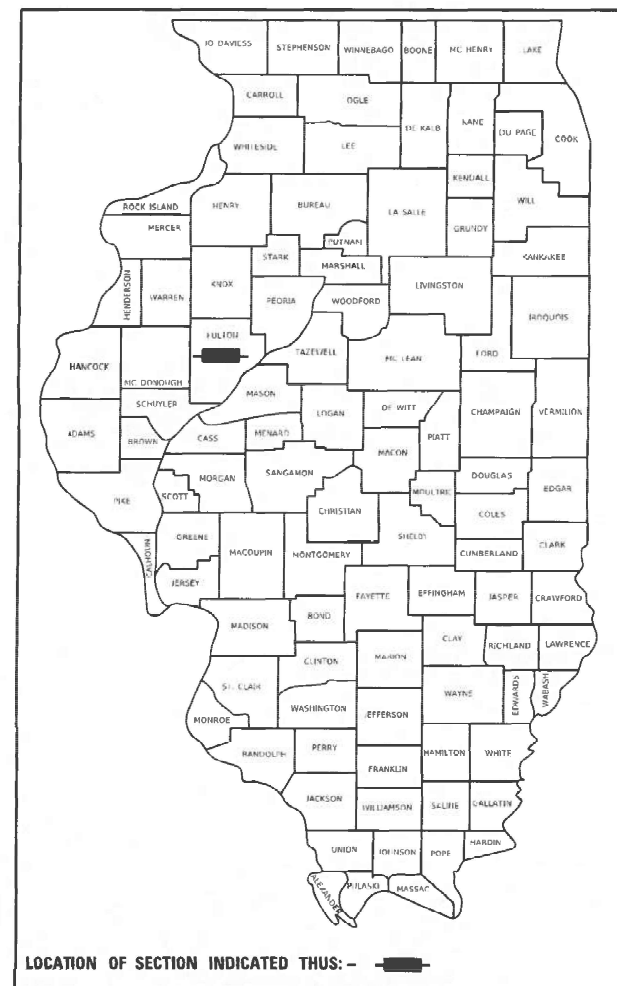


GROSS LENGTH = 508.57 FT. = 0.096 MILE
NET LENGTH = 508.57 FT. = 0.096 MILE

TIMOTHY B. PADGETT, P.E. EXPIRATION DATE
LICENSE NO. 062-049162 11-30-2025

F.A.P. RTE.	SECTION	COUNTY	TOTAL SHEETS	SHEET NO.
687	(123B)I-2	FULTON	7	1
		ILLINOIS	CONTRACT NO. 68J44	

D-94-068-24



PLANS PREPARED BY:



4940 Old Collinsville Road
Swansea, Illinois 62226
Tel: 618.624.4488
www.twm-inc.com
Illinois Professional Design Firm
No. 184-001220
License Expires: 4/30/2025
ILLINOIS - MISSOURI - TENNESSEE

STATE OF ILLINOIS DEPARTMENT OF TRANSPORTATION

SUBMITTED March 18, 2025
Timothy B. Padgett, P.E.
REGIONAL ENGINEER
May 9, 2025
Scott A. Etkin
ENGINEER OF DESIGN AND ENVIRONMENT
May 9, 2025
Timothy B. Padgett
DIRECTOR OF HIGHWAYS PROJECT IMPLEMENTATION

PRINTED BY THE AUTHORITY
OF THE STATE OF ILLINOIS

COMMITMENTS

COMMITMENTS ARE NOT TO BE ALTERED WITHOUT THE WRITTEN APPROVAL OF ALL PARTIES TO WHICH THE COMMITMENT WAS MADE.

NO COMMITMENTS HAVE BEEN MADE ON THIS PROJECT.

ENVIRONMENTAL REVIEWS

PRIOR TO THE USE OF ANY PROPOSED BORROW AREAS, USE AREAS (TEMPORARY ACCESS ROADS, DETOURS, RUN-AROUNDS, ETC.) AND/OR WASTE AREAS, THE CONTRACTOR SHALL FILE THE REQUIRED ENVIRONMENTAL RESOURCE REQUEST SURVEYS ACCORDING TO SECTION 107.22 OF THE STANDARD SPECIFICATIONS. THESE SURVEYS ARE REQUIRED IN ORDER FOR THE DEPARTMENT TO CONDUCT CULTURAL AND BIOLOGICAL RESOURCE SURVEYS FOR THE PROPOSED SITE.

THE REQUIRED ENVIRONMENTAL RESOURCE DOCUMENTATION SHALL INCLUDE THE FOLLOWING:

- BDE FORM 2289 (BORROW SITE REVIEW)
- BDE FORM 2290 (WASTE/USE AREA REVIEW)
- A LOCATION MAP SHOWING THE SIZE LIMITS AND LOCATION OF THE USE AREA
- COLOR PHOTOGRAPHS DEPICTING THE USE AREA
- BORROW AREA ENTRY AGREEMENT FORM - D4 PI0101

PRIOR TO ANY WASTE MATERIALS BEING REMOVED FROM THE CONSTRUCTION SITE THE REQUIRED ENVIRONMENTAL RESOURCE SURVEYS SHALL BE OBTAINED AND FILED BY THE CONTRACTOR. EXCESS WASTE PRODUCTS REMOVED FROM THE CONSTRUCTION SITE SHALL BE DISPOSED OF AS REQUIRED IN SECTION 202.03 OF THE STANDARD SPECIFICATIONS.

ANY PROTRUDING METAL BARS SHALL BE REMOVED PRIOR TO THE DISPOSAL OF BROKEN CONCRETE AT APPROVED DISPOSAL SITES.

PLEASE NOTE THAT A MINIMUM OF FOUR WEEKS SHALL BE ALLOWED FOR THE DISTRICT TO OBTAIN THE REQUIRED WASTE SITE ENVIRONMENTAL CLEARANCES AND SIX WEEKS FOR THE REQUIRED BORROW SITE ENVIRONMENTAL CLEARANCES.

PROJECT SPECIFIC NOTES

TWO CHANGEABLE MESSAGE SIGNS SHALL BE PLACED IN ADVANCE OF THE PROJECT. ONE PER EACH DIRECTION OF TRAVEL ON IL 95 ONE WEEK PRIOR TO CONSTRUCTION.

IF CONSTRUCTION ACTIVITY IS PLANNED DURING THE INDIANA BAT AND NORTHERN LONG EARED BAT ACTIVE SEASON - FROM APRIL 1 THROUGH SEPTEMBER 30 - THE DPEARTMENT SHALL PERFORM A FINAL INSPECTION OF THE BRIDGE NO MORE THAN 7 DAYS PRIOR TO THE START OF CONSTRUCTION ACTIVITY TO ENSURE BATS HAVE NOT STARTED TO USE THE AREA OF THE BRIDGE PROPOSED FOR WORK AFTER THE DEPARTMENT'S ORIGINAL INSPECTION.

THE USGS STREAM GAGE LOCATED ON THE BRIDGE SHALL NOT BE DISTURBED. ANY DAMAGES WILL BE REPAIRED AT THE CONTRACTOR'S EXPENSE.

MODEL: Default
FILE NAME: P:\2023\2309BAH - IL 95 over Spoon River (Debris Removal)\4 CADD - DWG\4.7 Tran\CADD Sheets\0468M4-sht-gennotes.dgn

<div><div><div><div><div><div></div></div></div><div><div><div></div></div></div><div><div><div></div></div></div></div></div><div><div>TWMENGINEERINGGEOSPATIAL SERVICES</div><div>IL DESIGN FIRM LICENSE NO: 184-001220</div></div></div> <div><div>TWM, INC. WWW.TWM-INC.COM</div><div>USER NAME = dlee</div></div> <div><div>DESIGNED - JCL</div><div>DRAWN - JCL</div><div>CHECKED - TBP</div><div>DATE - SEPT 2024</div></div> <div><div>REVISED -</div><div>REVISED -</div><div>REVISED -</div><div>REVISED -</div></div> <div><div>STATE OF ILLINOIS DEPARTMENT OF TRANSPORTATION</div></div> <div><div>GENERAL NOTES & COMMITMENTS</div></div> <div><div>SCALE: N/A</div><div>SHEET 1</div><div>OF 1</div><div>SHEETS</div><div>STA.</div><div>TO STA.</div></div> <div><div>F.A.P. RTE.</div><div>SECTION</div><div>COUNTY</div><div>TOTAL SHEETS</div><div>SHEET NO.</div></div> <div><div>687</div><div>(123B)I-2</div><div>FULTON</div><div>7</div><div>2</div></div> <div><div colspan="5">CONTRACT NO. 68J44</div></div> <div><div></div><div>ILLINOIS</div><div>FED. AID PROJECT</div></div>

MODEL: Default
FILE NAME: P:\2023\2308\411 - IL 95 over Spoon River (Debris Removal)\4 CAD - DWG\4.7 Tran\CADD Sheets\0468\44-sht-500.dgn



TWM, INC.
WWW.TWM-INC.COM

IL DESIGN FIRM
LICENSE NO:
184-001220

USER NAME = dlee	DESIGNED = JCL	REVISED =
	DRAWN = JCL	REVISED =
PLOT SCALE = 10.0000 ' / in.	CHECKED = TBP	REVISED =
PLOT DATE = 1/17/2025	DATE = SEPT 2024	REVISED =

STATE OF ILLINOIS
DEPARTMENT OF TRANSPORTATION

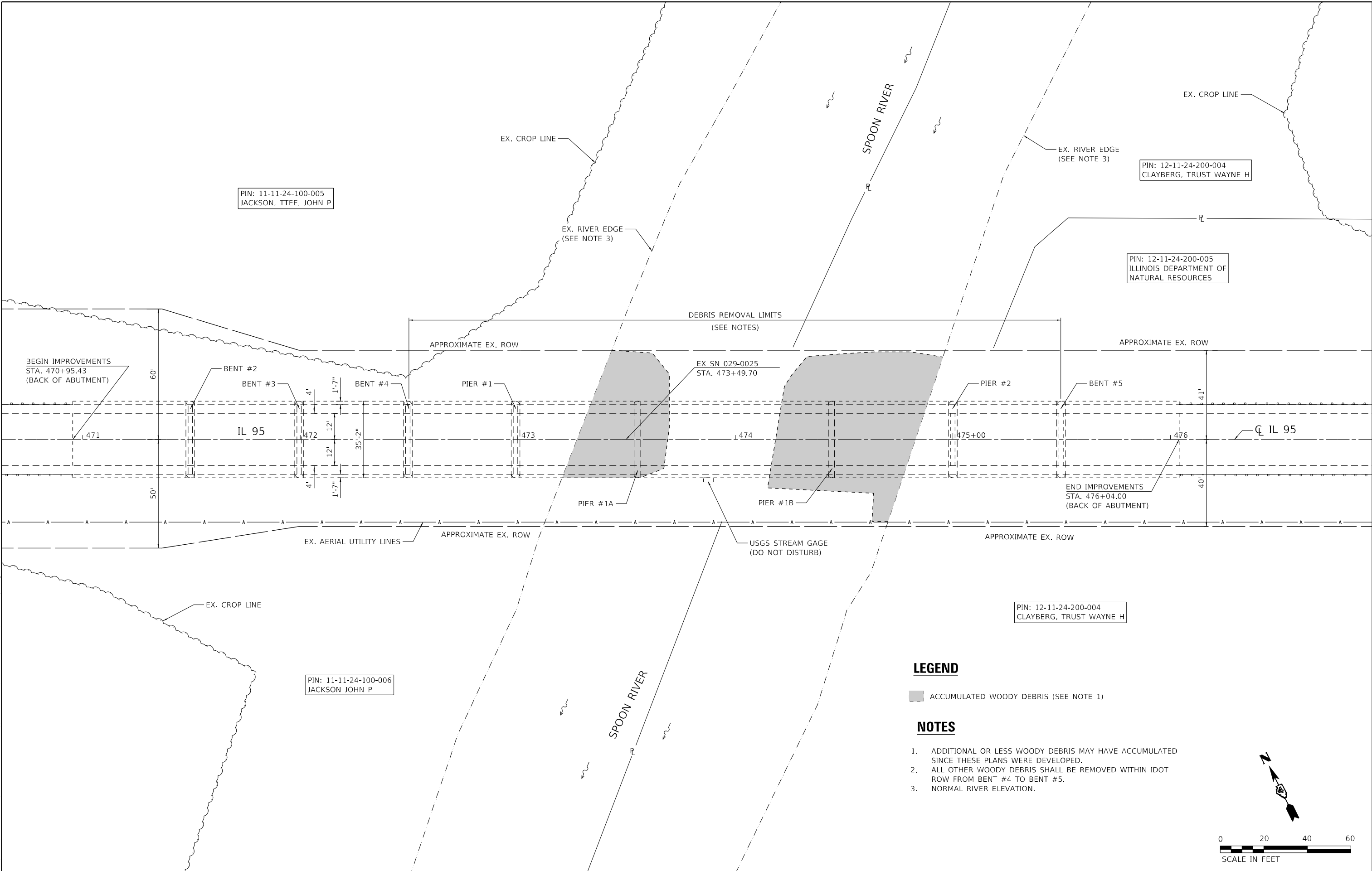
SUMMARY OF QUANTITIES

SCALE: N/A SHEET 1 OF 1 SHEETS STA. TO STA.

F.A.P. RTE.	SECTION	COUNTY	TOTAL SHEETS	SHEET NO.
687	(123B)I-2	FULTON	7	3
		CONTRACT NO. 68J44		
		ILLINOIS FED. AID PROJECT		

				CONSTRUCTION CODE
				IL 95 OVER SPOON RIVER
				SN 029-0025
				FULTON
				100% STATE
CODE NO.	PAY ITEM	UNIT	TOTAL QUANTITY	0047
25000200	SEEDING CLASS 2	ACRE	0.1	0.1
25100630	EROSION CONTROL BLANKET	SQ YD	250	250
28000400	PERIMETER EROSION BARRIER	FOOT	100	100
67100100	MOBILIZATION	L SUM	1	1
70100450	TRAFFIC CONTROL AND PROTECTION, STANDARD 701201	L SUM	1	1
70107025	CHANGEABLE MESSAGE SIGN	CAL DA	14	14
Z0015500	DEBRIS REMOVAL	L SUM	1	1

MODEL: Default
FILE NAME: P:\2023\23098AH - IL 95 over Spoon River (Debris Removal)\4 CAD - DWG\4.7 Tran\CADD Sheets\04804-1ht-2.dwg





ELEVATION VIEW OF BRIDGE
(LOOKING SOUTH)



ELEVATION VIEW OF BRIDGE
(LOOKING SOUTH)



USGS GAUGE (DO NOT DISTURB)
(LOOKING WEST)



TOP-DOWN VIEW
(DOWNSTREAM SIDE OF BRIDGE)



TOP-DOWN VIEW
(UPSTREAM SIDE OF BRIDGE)



TOP-DOWN VIEW
(UPSTREAM SIDE OF BRIDGE)

MODEL: Default
FILE NAME: D:\2023\230924\H - IL 95 over Spoon River (Debris Removal)\4 CAD - DWG\4.7 TranCAD\05 Sheets\048014-4-1-1.dgn



TWM, INC.
WWW.TWM-INC.COM
IL DESIGN FIRM
LICENSE NO:
184-001220

USER NAME	= dlee
PLOT SCALE	= 40,0000 * / in.
PLOT DATE	= 1/17/2025

DESIGNED -	JCL
DRAWN -	JCL
CHECKED -	TBP
DATE -	SEPT 2024

REVISED -	
REVISED -	
REVISED -	
REVISED -	

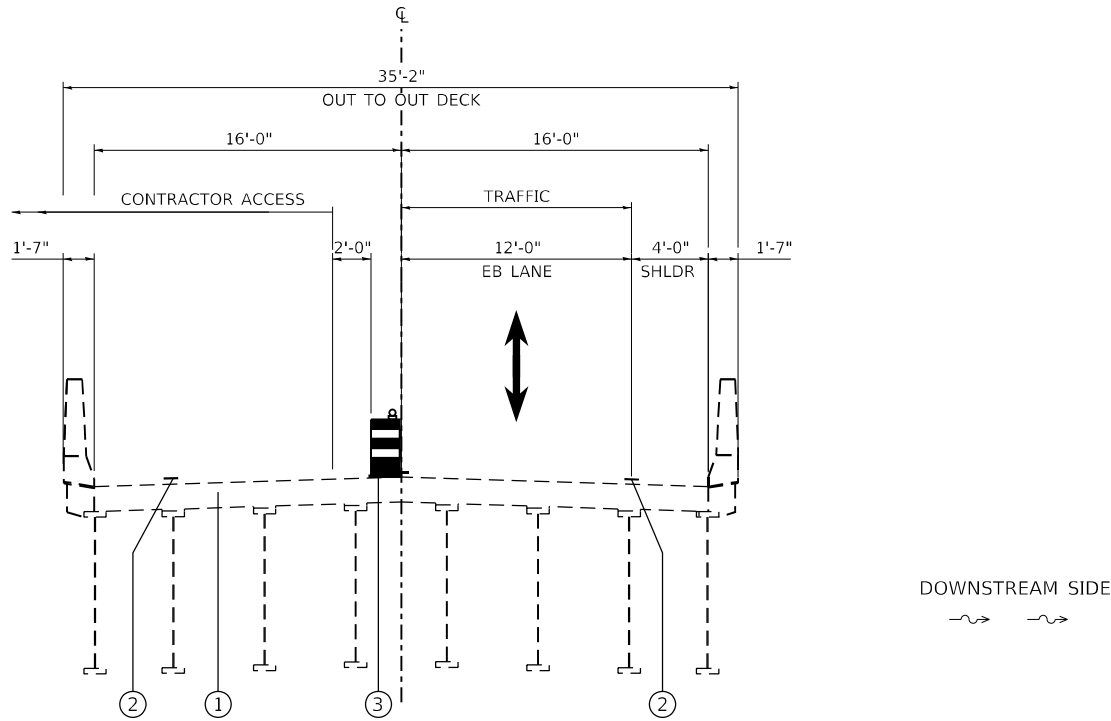
STATE OF ILLINOIS
DEPARTMENT OF TRANSPORTATION

PHOTOGRAPHS OF EXISTING CONDITIONS
(TAKEN 2024-07-26)

SCALE: N/A	SHEET 1	OF 1	SHEETS	STA.	TO STA.
------------	---------	------	--------	------	---------

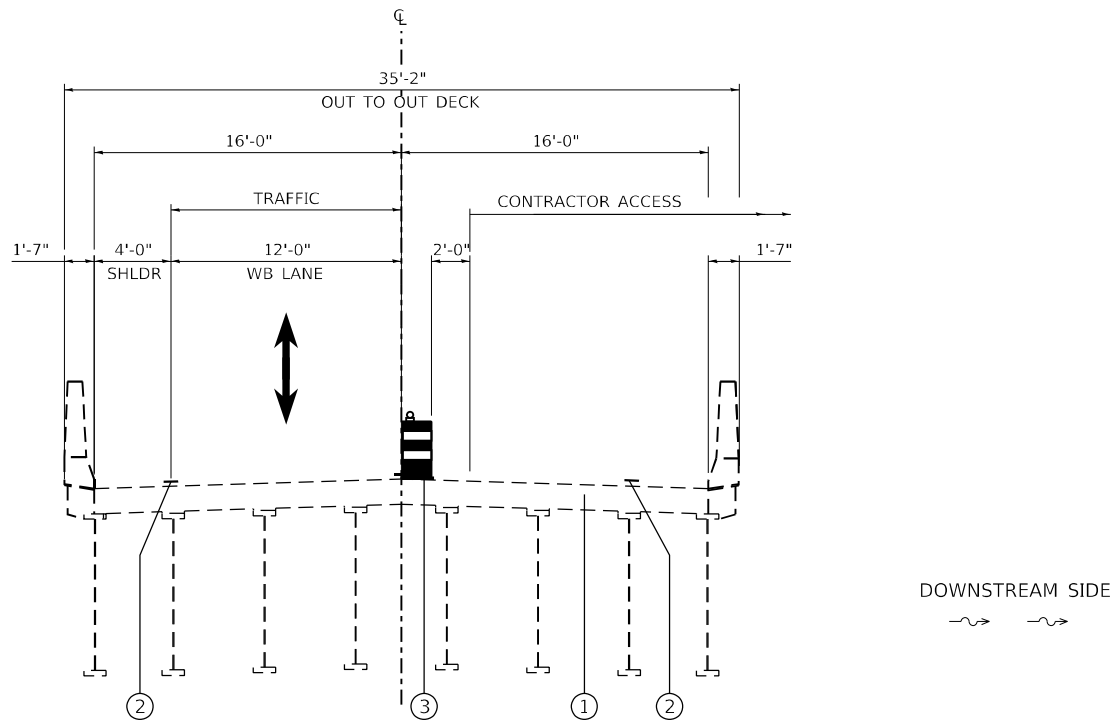
F.A.P. RTE.	SECTION	COUNTY	TOTAL SHEETS	SHEET NO.
687	(123B)I-2	FULTON	7	5
CONTRACT NO. 68J44				
ILLINOIS FED. AID PROJECT				

MODEL: Default
FILE NAME: P:\2023\23098AH - IL 95 over Spoon River (Debris Removal)\4 CADD - DWG\4.7 Tran\CADD Sheets\DA68M4-shl-zypic1.dgn



STAGING TYPICAL SECTION

IL 95 OVER SPOON RIVER (LOOKING EAST)
NORTH SIDE ACCESS



STAGING TYPICAL SECTION

IL 95 OVER SPOON RIVER (LOOKING EAST)
SOUTH SIDE ACCESS



TWM, INC.
WWW.TWM-INC.COM
IL DESIGN FIRM
LICENSE NO:
184-001220

USER NAME = dllee	DESIGNED - JCL	REVISED -
	DRAWN - JCL	REVISED -
PLOT SCALE = 10,0000' = 1 in.	CHECKED - TBP	REVISED -
PLOT DATE = 1/17/2025	DATE - SEPT 2024	REVISED -

DESIGNED - JCL	REVISED -
DRAWN - JCL	REVISED -
CHECKED - TBP	REVISED -
DATE - SEPT 2024	REVISED -

STATE OF ILLINOIS
DEPARTMENT OF TRANSPORTATION

STAGING TYPICAL SECTIONS

SCALE: NTS SHEET 1 OF 1 SHEETS STA. TO STA.

F.A.P. RTE.	SECTION	COUNTY	TOTAL SHEETS	SHEET NO.
687	(1238)I-2	FULTON	7	6
CONTRACT NO. 68J44				
ILLINOIS FED. AID PROJECT				

MODEL: Default
FILE NAME: P:\2023\230984\H - IL 95 over Spoon River (Debris Removal)\4 CADD - DWG\4.7 Tran(CADD Sheets)\4-4-sht-dtl-structural.dgn

F.A.P. RTE.	SECTION	COUNTY	TOTAL SHEETS	SHEET NO.
687	(123B)I-2	FULTON	7	7
		CONTRACT NO. 68J44		
ILLINOIS		FED. AID PROJECT		