

06-13-2025 LETTING ITEM 080

STATE OF ILLINOIS  
DEPARTMENT OF TRANSPORTATION

FAP RTE.	SECTION	COUNTY	TOTAL SHEETS	SHEET NO.
317	(116)TS-3	PEORIA	9	1
ILLINOIS CONTRACT NO. 68J80				

INDEX OF SHEETS:  
SEE SHEET 2 FOR INDEX OF SHEETS

HIGHWAY STANDARDS:  
SEE SHEET 2 FOR A LIST OF APPLICABLE  
HIGHWAY STANDARDS

PROPOSED  
HIGHWAY PLANS  
FAP ROUTE 317 (US 150)  
(116)TS-3  
PEORIA COUNTY

C-94-015-25

US 150 (WAR MEMORIAL DR.) & ALLEN RD./CHARTER OAK RD.

PROJECT DESCRIPTION:  
TRAFFIC SIGNAL MAST ARM  
REPLACEMENT AT US 150 (WAR  
MEMORIAL DR.) & ALLEN RD./CHARTER  
OAK R. IN PEORIA.

J.U.L.I.E.  
JOINT UTILITY LOCATION INFORMATION FOR EXCAVATION  
1-800-892-0123  
OR 811

PROJECT ENGINEER  
PROJECT MANAGER  
CATALOG NO. 036591-00D  
CONTRACT NO. 68J80

TREVOR HANSON 309-671-4466  
BENJAMIN TELLEFSON 309-671-4477



STATE OF ILLINOIS  
DEPARTMENT OF TRANSPORTATION

SUBMITTED March 20 2025  
Kensil S. Darnell  
REGIONAL ENGINEER

May 9 2025  
Scott A. Etkin  
ENGINEER OF DESIGN AND ENVIRONMENT

May 9 2025  
Quincy  
DIRECTOR OF HIGHWAYS PROJECT IMPLEMENTATION

PRINTED BY THE AUTHORITY  
OF THE STATE OF ILLINOIS

NO COMMITMENTS HAVE BEEN MADE IN CONJUNCTION WITH THIS PROJECT.

INDEX OF SHEETS	
SHEET	DESCRIPTION
1	COVER SHEET
2	COMMITMENTS, INDEX OF SHEETS, HIGHWAY STANDARDS, & TRAFFIC SIGNAL CONSTRUCTION STAGING NOTES
3	CONSTRUCTION NOTES
4	SUMMARY OF QUANTITIES
5 - 6	EXISTING TRAFFIC SIGNAL PLANS
7	EXISTING TRAFFIC SIGNAL PLANS & REMOVAL ITEMS
8	PROPOSED TRAFFIC SIGNAL PLANS
9	PROPOSED MAST ARM AND TRAFFIC SIGNAL POST DETAILS

HIGHWAY STANDARDS	
STANDARD	DESCRIPTION
000001-08	STANDARD SYMBOLS, ABBREVIATIONS AND PATTERNS
001006	DECIMAL OF AN INCH & FOOT
701001-02	OFF-ROAD OPERATIONS, 2L, 2W, MORE THAN 15' AWAY
701006-05	OFF-ROAD OPERATIONS, 2L, 2W, 15' TO 24" FROM PAVEMENT EDGE
701101-05	OFF-ROAD OPERATIONS, MULTILANE, 15' TO 24" FROM PAVEMENT EDGE
701106-02	OFF-ROAD OPERATIONS, MULTILANE, MORE THAN 15' AWAY
701601-09	URBAN LANE CLOSURE, MULTILANE, 1W OR 2W WITH NONTRAVERSABLE MEDIAN
701701-10	URBAN LANE CLOSURE, MULTILANE INTERSECTION
701901-10	TRAFFIC CONTROL DEVICES
720001-01	SIGN PANEL MOUNTING DETAILS
720016-04	MAST ARM MOUNTED STREET NAME SIGNS
821101-03	LUMINARE WIRING IN POLE
857001-01	STANDARD PHASE DESIGNATION DIAGRAMS AND PHASE SEQUENCES
873001-02	TRAFFIC SIGNAL GROUNDING & BONDING
877012-07	STEEL COMB. MAST ARM ASSEMBLY AND POLE 56' THROUGH 75'
878001-11	CONCRETE FOUNDATION DETAILS
880006-01	TRAFFIC SIGNAL MOUNTING DETAILS
701801-06	SIDEWALK, CORNER OR CROSSWALK CLOSURE

TRAFFIC SIGNAL CONSTRUCTION STAGING NOTES	
1.	THE CONTRACTOR WILL BE ALLOWED TO PLACE THE INTERSECTION INTO ALL-RED FLASH MODE TO FACILITATE THE INSTALLATION OF THE PROPOSED TRAFFIC SIGNAL MAST ARMS, POSTS, SIGNAL HEADS, ELECTRICAL CABLE AND OTHER COMPONENTS.
2.	THE CONTRACTOR SHALL FURNISH AND INSTALL A MINIMUM OF TWO STOP SIGNS PER APPROACH WHEN THE INTERSECTION IS OPERATING IN ALL-RED FLASH MODE. THE TRAFFIC SIGNALS MAY BE PLACED INTO ALL-RED FLASH MODE BETWEEN THE HOURS OF 8:30AM AND 3:00PM ONLY.
3.	THE CONTRACTOR SHALL RESTORE THE TRAFFIC SIGNALS TO NORMAL OPERATION AT ALL OTHER TIMES, UNLESS SPECIFICALLY DIRECTED OTHERWISE BY THE ENGINEER.
4.	THE CONTRACTOR WILL BE ALLOWED TO PLACE THE INTERSECTION INTO FLASH FOR A MAXIMUM OF FIVE DAYS PER EACH LOCATION.
5.	THE CONTRACTOR WILL BE ALLOWED TO MAKE TEMPORARY SPLICES AS NEEDED TO FACILITATE THE INSTALLATION OF THE PROPOSED TRAFFIC SIGNAL EQUIPMENT.
6.	ALL COSTS (LABOR, MATERIALS, AND EQUIPMENT) ASSOCIATED WITH THESE REQUIREMENTS SHALL BE INCLUDED IN THE CONTRACT BID PRICE FOR THE PAY ITEM "TRAFFIC CONTROL AND PROTECTION, (SPECIAL)." THERE WILL BE NO ADDITIONAL COMPENSATION FOR ITEMS REQUIRED TO IMPLEMENT STAGING, INCLUDING, BUT NOT LIMITED TO, TEMPORARY CABLE SPLICES, TEMPORARY TRAFFIC POSTS, AND PREMIUM TIME HOURS.

MODEL: Default  
FILE NAME: c:\p\work\pwtcd\hanson\0039664\Signals Complete.dgn

	USER NAME   = trevor.hanson	DESIGNED   -	REVISED   -	STATE OF ILLINOIS DEPARTMENT OF TRANSPORTATION	COMMITMENTS, INDEX OF SHEETS, HIGHWAY STANDARDS, & TRAFFIC SIGNAL CONSTRUCTION STAGING NOTES				F.A.P. RTE.	SECTION	COUNTY	TOTAL SHEETS	SHEET NO.	
		DRAWN    -	REVISED   -						317	(116)TS-3	PEORIA	9	2	
		CHECKED   -	REVISED   -		CONTRACT NO. 68J80									
	PLOT DATE   = 1/7/2025	DATE       -	REVISED   -		SCALE:	SHEET	OF	SHEETS	STA.	TO STA.	ILLINOIS FED. AID PROJECT			



MODEL: Default  
FILE NAME: c:\pwwork\pwwork\hanson\0039664\Signals Complete.dgn

CONSTRUCTION NOTES	
1.	THE LOCATION OF ALL UTILITIES AND PRIVATELY OWNED FACILITIES SHALL BE FIELD VERIFIED BY THE CONTRACTOR PRIOR TO THE INSTALLATION OF ANY COMPONENTS.
2.	THE CONTRACTOR SHALL BE RESPONSIBLE FOR LOCATING EXISTING IDOT ELECTRICAL FACILITIES AT HIS/HER OWN EXPENSE IF REQUIRED. THE CONTRACTOR SHALL ALSO BE LIABLE FOR ANY DAMAGE TO IDOT FACILITIES RESULTING FROM INACCURATE LOCATING.
3.	ELECTRICAL WORK SHALL CONFORM WITH NATIONAL, STATE, AND LOCAL CODES.
4.	THE LOCATIONS FOR CONCRETE FOUNDATIONS ARE PROVIDED FOR REFERENCE ONLY. THE ENGINEER OF TRAFFIC SHALL BE NOTIFIED FOR LOCATION VERIFICATION BEFORE INSTALLATION.
5.	ALL TRAFFIC SIGNAL SECTIONS SHALL HAVE 12" SINGLE LED LENSES.
6.	THE RED SECTIONS OF THE SIGNAL HEADS SHARING THE SAME MAST ARM SHALL BE LEVEL WITH ONE ANOTHER AND MAINTAIN A 16 FT. MINIMUM CLEARANCE FROM THE HIGHEST POINT OF THE ROADWAY TO BOTTOM OF THE SIGNAL BACKPLATE.
7.	ALL TRAFFIC SIGNAL HEAD BRACKETS ARE TO BE GALVANIZED STEEL WITH A NATURAL FINISH.
8.	ALL TRAFFIC SIGNAL STRUCTURES SHALL BE BONDED IN ACCORDANCE WITH NEC REQUIREMENTS. THIS WORK SHALL BE PAID FOR AT THE CONTRACT UNIT PRICE FOR "ELECTRIC CABLE IN CONDUIT, EQUIPMENT GROUNDING CONDUCTOR, NO. 6 1C" AND SHALL INCLUDE ALL LABOR, EQUIPMENT, AND MATERIALS (INCLUDING CLAMPS, HARDWARE, ELECTRICAL CABLE, AND ALL OTHER ITEMS REQUIRED TO BOND THE STRUCTURES).
9.	SDR 13.5 HDPE COILABLE DUCT MAY BE USED IN PLACE OF SCHEDULE 40 PVC CONDUIT.
10.	THE CONTRACTOR SHALL PROVIDE ELECTRICAL CABLE SLACK IN ACCORDANCE WITH ARTICLE 873.03.
11.	ELECTRICAL CABLE WILL BE MEASURED FOR PAYMENT IN ACCORDANCE WITH ARTICLE 873.04.
12.	THE CONTRACTOR SHALL VERIFY FIELD CONDITIONS PRIOR TO BIDDING. THERE WILL BE NO ADDITIONAL COMPENSATION PAID FOR CLAIMS THAT ARISE FROM A FAILURE TO FULLY INVESTIGATE EXISTING FIELD CONDITIONS.
13.	THE EXISTING TRAFFIC SIGNALS SHALL REMAIN IN OPERATION DURING THE CONSTRUCTION OF THE PROPOSED TRAFFIC SIGNALS.
14.	ANY MAINTENANCE OF EXISTING TRAFFIC SIGNALS WILL BE CONSIDERED EXTRA WORK IN ACCORDANCE WITH ARTICLE 109.04 OF THE STANDARD SPECIFICATIONS.
15.	ALL SURPLUS MATERIALS SHALL BE DISPOSED OF IN ACCORDANCE WITH ARTICLE 202.03 OF THE STANDARD SPECIFICATIONS.
16.	NO ADDITIONAL COMPENSATION WILL BE ALLOWED FOR PLACING CONDUIT AT GREATER THAN 2 FT. MINIMUM DEPTH TO AVOID OBSTACLES SUCH AS UNDERGROUND UTILITIES.
17.	THE CONTRACTOR IS RESPONSIBLE FOR THE COST OF UNCOVERING OR HAND DIGGING AROUND UTILITIES AS NECESSARY. THIS COST OF THIS WORK SHALL BE INCLUDED IN THE UNIT PRICES FOR THE CONDUITS.
18.	THE CONTRACTOR SHALL FURNISH AND INSTALL GROUT AROUND ALL DRILLED CONDUITS LOCATED INSIDE OF HANDHOLES TO PREVENT WATER AND DIRT INTRUSION INTO THE HANDHOLE. THE COST OF THIS WORK SHALL BE INCLUDED IN THE COST OF "DRILL EXISTING HANDHOLE."
19.	WITHIN THIRTY CALENDAR DAYS AFTER CONTRACT EXECUTION, THE CONTRACTOR SHALL SUBMIT J.U.L.I.E. TICKETS TO HAVE THE UNDERGROUND UTILITIES MARKED AT THE INTERSECTION AND THEN SCHEDULE AN ON-SITE MEETING WITH THE RESIDENT ENGINEER AND IDOT D4 TRAFFIC OPERATIONS TO DETERMINE AND MARK THE EXACT PLACEMENT OF THE PROPOSED TRAFFIC SIGNAL COMPONENTS.
20.	THE CONTRACTOR SHALL RELOCATE THE EXISTING LED LUMINAIRES FROM THE EXISTING MAST ARMS TO THE PROPOSED MAST ARMS. THE CONTRACTOR SHALL FURNISH AND INSTALL NEW SURGE ARRESTORS, FUSES, FUSEHOLDERS, AND POLE WIRING. THE COST OF THIS WORK SHALL BE INCLUDED IN THE BID PRICE FOR "RELOCATE EXISTING LUMINAIRE."
21.	THE CONTRACTOR SHALL FURNISH AND INSTALL ONE 20A 1-POLE CIRCUIT BREAKER, BUTTON PHOTOCELL, TERMINAL BLOCK WIRING, AND ALL OTHER ITEMS REQUIRED TO PROVIDE POWER TO THE RELOCATED LUMINAIRES. THESE ITEMS SHALL BE INSTALLED IN THE EXISTING TRAFFIC SIGNAL CABINET. ALL LUMINAIRES SHALL BE WIRED TO 120V. THE COST OF THIS WORK SHALL BE INCLUDED IN THE BID PRICE FOR "RELOCATE EXISTING LUMINAIRE."

	USER NAME = trevor.hanson	DESIGNED -	REVISED -	STATE OF ILLINOIS DEPARTMENT OF TRANSPORTATION	CONSTRUCTION NOTES		F.A.P. RTE.	SECTION	COUNTY	TOTAL SHEETS	SHEET NO.
		DRAWN -	REVISED -				317	(116)TS-3	PEORIA	9	3
		CHECKED -	REVISED -				CONTRACT NO. 68J80				
	PLOT DATE = 1/7/2025	DATE -	REVISED -		SCALE:	SHEET OF SHEETS	STA.	TO STA.	ILLINOIS   FED. AID PROJECT		

SUMMARY OF QUANTITIES

CODE 0021  
100% STATE  
0% CITY  
PEORIA

ITEM NUMBER	ITEM DESCRIPTION	UNIT	TOTAL QTY.	
67100100	MOBILIZATION	L SUM	1.0	1.0
* 72000200	SIGN PANEL - TYPE 2	SQ FT	23.8	23.8
81028370	UNDERGROUND CONDUIT, PVC, 3" DIA.	FOOT	9.0	9.0
81702110	ELECTRIC CABLE IN CONDUIT, 600V (XLP-TYPE USE) 1/C NO. 10	FOOT	801.0	801.0
87301245	ELECTRIC CABLE IN CONDUIT, SIGNAL NO. 14 5C	FOOT	883.0	883.0
87301900	ELECTRIC CABLE IN CONDUIT, EQUIPMENT GROUNDING CONDUCTOR, NO. 6 1C	FOOT	18.5	18.5
87502520	TRAFFIC SIGNAL POST, GALVANIZED STEEL 18 FT.	EACH	1.0	1.0
87703090	STEEL COMBINATION MAST ARM ASSEMBLY AND POLE 70 FT.	EACH	1.0	1.0
87800420	CONCRETE FOUNDATION, TYPE E 42-INCH DIAMETER	FOOT	25.0	25.0
87900200	DRILL EXISTING HANDHOLE	EACH	1.0	1.0
88040070	SIGNAL HEAD, POLYCARBONATE, LED, 1-FACE, 3-SECTION, BRACKET MOUNTED	EACH	1.0	1.0
88040090	SIGNAL HEAD, POLYCARBONATE, LED, 1-FACE, 3-SECTION, MAST ARM MOUNTED	EACH	3.0	3.0
88040110	SIGNAL HEAD, POLYCARBONATE, LED, 1-FACE, 4-SECTION, BRACKET MOUNTED	EACH	1.0	1.0
88102825	PEDESTRIAN SIGNAL HEAD, POLYCARBONATE, LED, 1-FACE, BRACKET MOUNTED WITH COUNT DOWN TIMER	EACH	2.0	2.0
88200510	TRAFFIC SIGNAL BACKPLATE, RETROREFLECTIVE	EACH	5.0	5.0
89500200	RELOCATE EXISTING PEDESTRIAN SIGNAL HEAD	EACH	1.0	1.0
89500300	RELOCATE EXISTING ILLUMINATED SIGN	EACH	1.0	1.0
89501250	RELOCATE EXISTING TRAFFIC SIGNAL EQUIPMENT	EACH	1.0	1.0
89501420	RELOCATE EXISTING EMERGENCY VEHICLE PRIORITY SYSTEM, COMPLETE	EACH	1.0	1.0
89502220	MODIFY EXISTING CONCRETE FOUNDATION	EACH	1.0	1.0
89502375	REMOVE EXISTING TRAFFIC SIGNAL EQUIPMENT	EACH	1.0	1.0
X7010216	TRAFFIC CONTROL AND PROTECTION, (SPECIAL)	L SUM	1.0	1.0
X8440102	RELOCATE EXISTING LUMINIARE	EACH	1.0	1.0
Z0033068	TRAFFIC SIGNAL BATTERY BACKUP SYSTEM	EACH	1.0	1.0

\* = SPECIALTY ITEM

MODEL: Default  
FILE NAME: c:\pwworkspace\hanson\1\0339654\SIGNALS Complete.dgn

USER NAME = trevor.hanson	DESIGNED -	REVISED -
	DRAWN -	REVISED -
	CHECKED -	REVISED -
PLOT DATE = 1/7/2025	DATE -	REVISED -

STATE OF ILLINOIS  
DEPARTMENT OF TRANSPORTATION

SUMMARY OF QUANTITIES

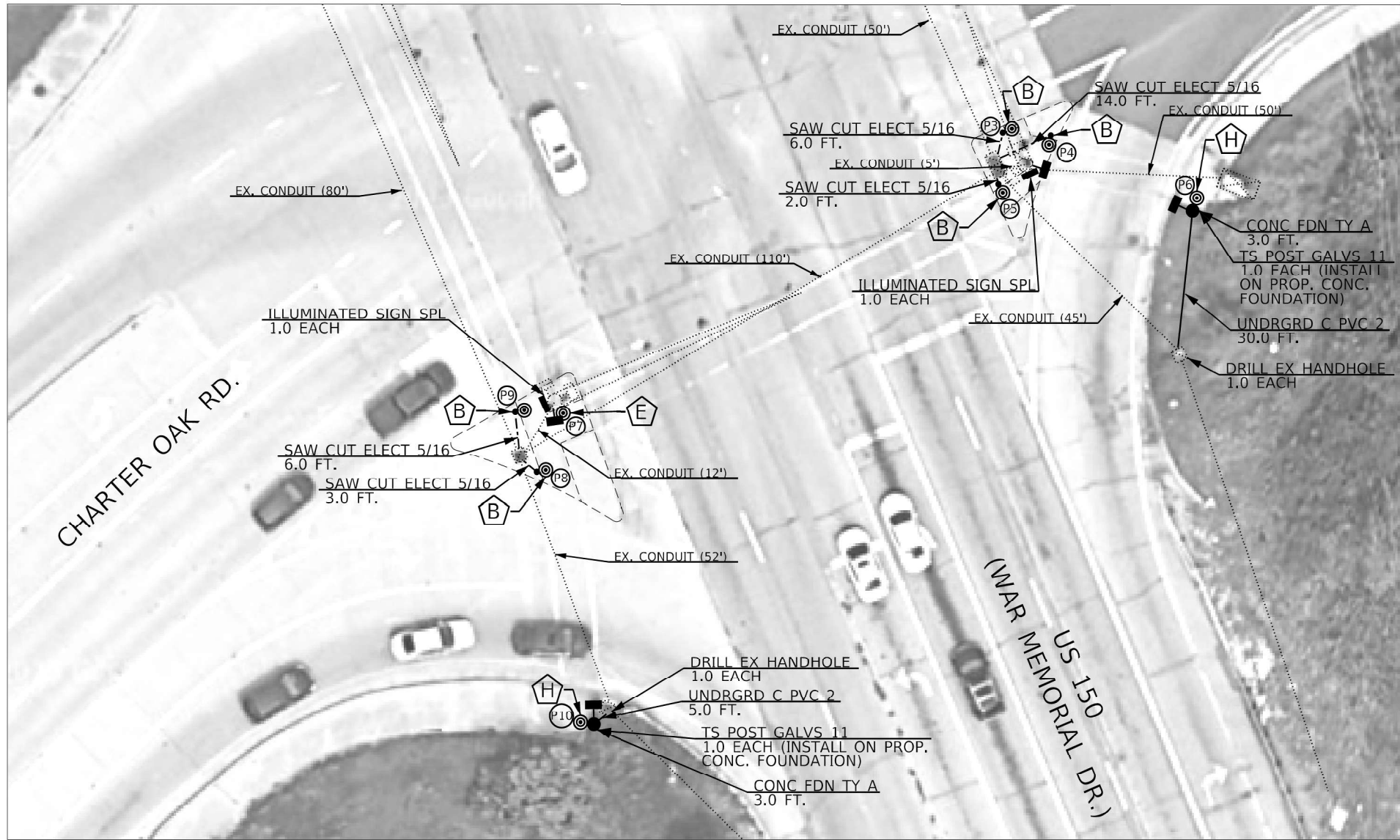
SCALE: SHEET OF SHEETS STA. TO STA.

F.A.P. RTE.	SECTION	COUNTY	TOTAL SHEETS	SHEET NO.
317	(116)TS-3	PEORIA	9	4
CONTRACT NO. 68J80				
ILLINOIS FED. AID PROJECT				





FOR INFORMATION ONLY



APS LEGEND	
	PROP. APS INSTALLED ON PROP. PEDESTRIAN PUSHBUTTON POST (NO FOUNDATION) ON EX. SIDEWALK, WITH ANCHOR BOLT SET, 1/2 DIAMETER, WITH WEDGE ANCHORS
	PROP. APS INSTALLED ON PROP. PEDESTRIAN PUSHBUTTON POST (NO FOUNDATION) ON EX. ISLAND SURFACE, WITH ANCHOR BOLT SET, 1/2 DIAMETER, WITH WEDGE ANCHORS
	PROP. APS INSTALLED ON PROP. PEDESTRIAN PUSHBUTTON POST (NO FOUNDATION) ON EX. SIDEWALK CURB, WITH ANCHOR BOLT SET 1/2 DIAMETER, WITH WEDGE ANCHORS
	PROP. APS INSTALLED ON PROP. PEDESTRIAN PUSHBUTTON POST (CONCRETE FOUNDATION)
	PROP. APS INSTALLED ON EX. MAST ARM STRAIN POLE
	PROP. APS INSTALLED ON EX. TRAFFIC SIGNAL POST OR LIGHT POLE
	PROP. APS INSTALLED ON EX. PEDESTRIAN PUSHBUTTON POST
	PROP. APS INSTALLED ON PROP. TRAFFIC SIGNAL POST

PEORIA TOWNSHIP  
40.759912, -89.638508

MODEL: Default  
FILE NAME: c:\pwwork\hanson\0039664\Signals Complete.dgn

USER NAME = trevor.hanson	DESIGNED -	REVISED -
	DRAWN -	REVISED -
	CHECKED -	REVISED -
	DATE -	REVISED -
PLOT SCALE = 23.8272' / in.		
PLOT DATE = 6/29/2023		

STATE OF ILLINOIS DEPARTMENT OF TRANSPORTATION	
---------------------------------------------------	--

PROPOSED ACCESSIBLE PEDESTRIAN SIGNALS (2 OF 2) US 150 & ALLEN RD./ CHARTER OAK RD. - PEORIA			
SCALE:	SHEET	OF	SHEETS
STA.	TO	STA.	

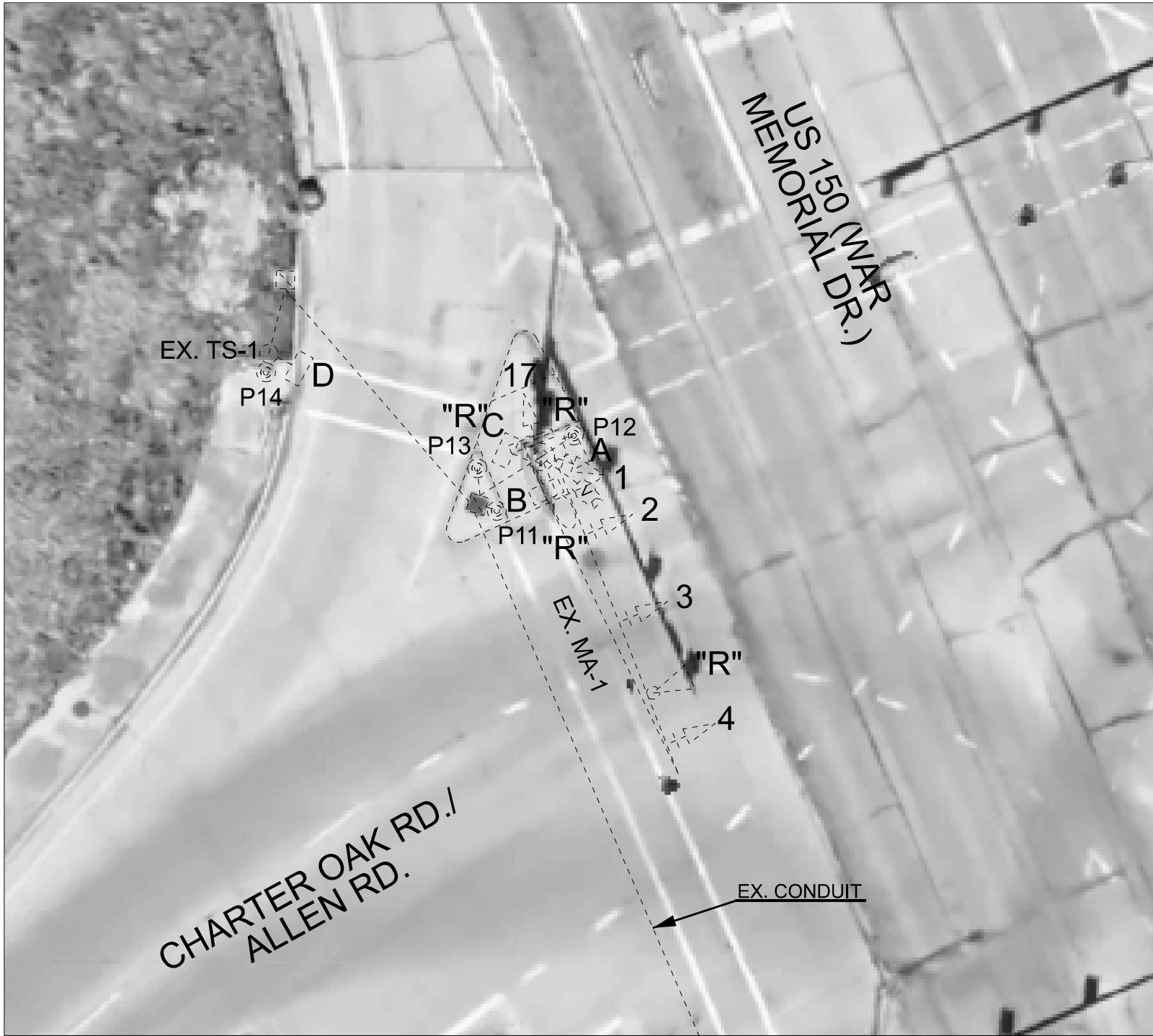
F.A.P. RTE. VAR.	SECTION	COUNTY	TOTAL SHEETS	SHEET NO.
	D4 ADA PUSHBUTTONS 2024	PEORIA	80	46
CONTRACT NO. 68H76				
ILLINOIS FED. AID PROJECT				

USER NAME = trevor.hanson	DESIGNED -	REVISED -
	DRAWN -	REVISED -
	CHECKED -	REVISED -
	DATE -	REVISED -
PLOT DATE = 1/7/2025		

STATE OF ILLINOIS DEPARTMENT OF TRANSPORTATION	
---------------------------------------------------	--

EXISTING TRAFFIC SIGNAL PLANS - CONTINUED			
SCALE:	SHEET	OF	SHEETS
STA.	TO	STA.	

F.A.P. RTE. VAR.	SECTION	COUNTY	TOTAL SHEETS	SHEET NO.
317	(116)TS-3	PEORIA	9	6
CONTRACT NO. 68J80				
ILLINOIS FED. AID PROJECT				



TRAFFIC SIGNALS LEGEND

- EX. LUMINAIRE
- EX. MAST ARM ASSEMBLY
- EX. HANDHOLE
- EX. EVP BEACON
- EX. TRAFFIC SIGNAL HEAD W/ BACKPLATE
- EX. PEDESTRIAN SIGNAL HEAD
- EX. TRAFFIC SIGNAL POST
- EX. ACCESSIBLE PEDESTRIAN SIGNAL
- EX. FLIR THERMAL VEHICLE DETECTOR
- EX. CONDUIT

"R" INDICATES ITEM TO BE RELOCATED

REMOVE EXISTING TRAFFIC SIGNAL EQUIPMENT - QTY. 1.0 EACH	
(INCLUDES ALL ITEMS LISTED BELOW)	
THE FOLLOWING ITEMS SHALL BE REMOVED AND DISPOSED OF BY THE CONTRACTOR OFF OF THE RIGHT-OF-WAY:	
QTY.	ITEM DESCRIPTION
2.0	SIGNAL HEAD, BRACKET MOUNTED (SIGNAL HEADS 1, 17)
3.0	SIGNAL HEAD, MAST ARM MOUNTED (SIGNAL HEADS 2, 3, 4)
2.0	PEDESTRIAN SIGNAL HEAD 1-FACE (SIGNAL HEADS A, B)
1.0	MAST ARM ASSEMBLY AND POLE (MA-1)
ALL	ELECTRICAL CABLE NOT USED IN PROPOSED PLANS
1.0	BATTERY BACKUP SYSTEM

BILL OF MATERIALS		
US 150 (WAR MEMORIAL) & ALLEN/CHARTER OAK - REMOVAL		
ITEM DESCRIPTION	UNIT	QTY.
REMOVE EXISTING TRAFFIC SIGNAL EQUIPMENT	EACH	1.0

NOT TO SCALE

MODEL: Default  
FILE NAME: c:\p\work\p\work\hanson\03939664\Signals Complete.dgn

	USER NAME   = trevor.hanson	DESIGNED   -	REVISED   -	STATE OF ILLINOIS DEPARTMENT OF TRANSPORTATION	EXISTING TRAFFIC SIGNAL PLANS & REMOVAL ITEMS				F.A.P. RTE.	SECTION	COUNTY	TOTAL SHEETS	SHEET NO.
		DRAWN    -	REVISED   -						317	(116)TS-3	PEORIA	9	7
		CHECKED   -	REVISED   -		CONTRACT NO. 68J80								
	PLOT DATE   = 1/7/2025	DATE       -	REVISED   -		SCALE:	SHEET	OF	SHEETS	STA.	TO STA.			
					ILLINOIS   FED. AID PROJECT								



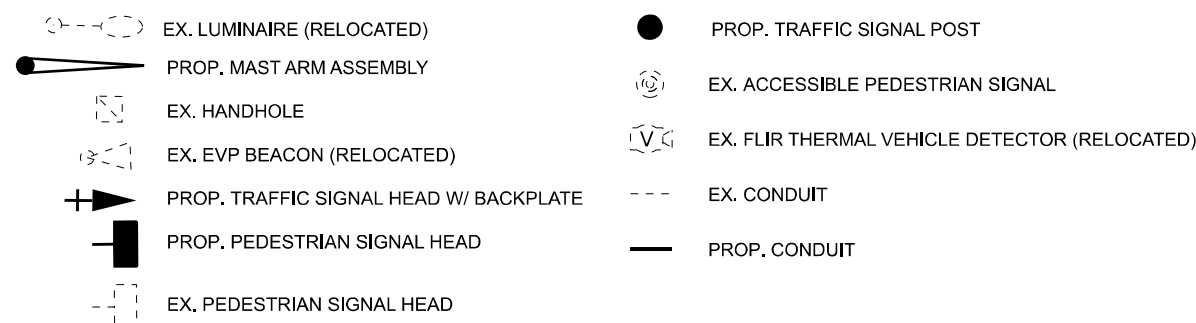


BILL OF MATERIALS		
US 150 (WAR MEMORIAL) & ALLEN/CHARTER OAK		
ITEM DESCRIPTION	UNIT	QTY.
SIGN PANEL - TYPE 2	SQ FT	23.8
UNDERGROUND CONDUIT, PVC, 3" DIA.	FOOT	9.0
ELECTRIC CABLE IN CONDUIT, 600V (XLP-TYPE USE) 1/C NO. 10	FOOT	801.0
ELECTRIC CABLE IN CONDUIT, SIGNAL NO. 14 5C	FOOT	883.0
ELECTRIC CABLE IN CONDUIT, EQUIPMENT GROUNDING CONDUCTOR, NO. 6 1C	FOOT	18.5
TRAFFIC SIGNAL POST, GALVANIZED STEEL 18 FT.	EACH	1.0
STEEL COMBINATION MAST ARM ASSEMBLY AND POLE 70 FT.	EACH	1.0
CONCRETE FOUNDATION, TYPE E 42-INCH DIAMETER	FOOT	25.0
DRILL EXISTING HANDHOLE	EACH	1.0
SIGNAL HEAD, POLYCARBONATE, LED, 1-FACE, 3-SECTION, BRACKET MOUNTED	EACH	1.0
SIGNAL HEAD, POLYCARBONATE, LED, 1-FACE, 3-SECTION, MAST ARM MOUNTED	EACH	3.0
SIGNAL HEAD, POLYCARBONATE, LED, 1-FACE, 4-SECTION, BRACKET MOUNTED	EACH	1.0
PEDESTRIAN SIGNAL HEAD, POLYCARBONATE, LED, 1-FACE, BRACKET MOUNTED WITH COUNT DOWN TIMER	EACH	2.0
TRAFFIC SIGNAL BACKPLATE, RETROREFLECTIVE	EACH	5.0
RELOCATE EXISTING PEDESTRIAN SIGNAL HEAD	EACH	1.0
RELOCATE EXISTING ILLUMINATED SIGN	EACH	1.0
RELOCATE EXISTING TRAFFIC SIGNAL EQUIPMENT	EACH	1.0
RELOCATE EXISTING EMERGENCY VEHICLE PRIORITY SYSTEM, COMPLETE	EACH	1.0
MODIFY EXISTING CONCRETE FOUNDATION	EACH	1.0
RELOCATE EXISTING LUMINIAIRE	EACH	1.0
TRAFFIC SIGNAL BATTERY BACKUP SYSTEM	EACH	1.0

TRAFFIC SIGNAL HEAD SCHEDULE			
SIGNAL HEAD	ITEM	CABLE TYPE	PROP. CABLE QTY. (FOOT)
1	PROP. SH P LED 1F 3S BM	SIGNAL NO. 14 5C (RE-USE EX.)	
2	PROP. SH P LED 1F 3S MAM	SIGNAL NO. 14 5C	444.5
3	PROP. SH P LED 1F 3S MAM	SIGNAL NO. 14 5C	432.5
4	PROP. SH P LED 1F 3S MAM	SIGNAL NO. 14 5C	12.0
17	PROP. SH P LED 1F 3S BM	SIGNAL NO. 14 7C (RE-USE EX.)	
A	PROP. SH P LED 1F 3S BM	SIGNAL NO. 14 5C (RE-USE EX.)	
B	PROP. SH P LED 1F 3S BM	SIGNAL NO. 14 5C (RE-USE EX.)	
C	RELOCATED EX. SH P LED 1F 3S BM	SIGNAL NO. 14 5C (RE-USE EX.)	
D	EX. SH P LED 1F 3S BM	SIGNAL NO. 14 5C (RE-USE EX.)	

MAST ARM AND TRAFFIC SIGNAL POST SCHEDULE						
NAME	DESCRIPTION	LENGTH	FOUNDATION DETAILS			LOCATION
			DIAMETER	TYPE	DEPTH	
MA-1	COMB. MAA&P	70 FT.	42 IN.	E	25 FT.	US 150 EB RT RADIUS
TS-2	TS POST GALVS	18 FT.	MODIFY EX. CONCRETE FOUNDATION			US 150 EB RT CORNER ISLAND

### TRAFFIC SIGNALS LEGEND



NOT TO SCALE

USER NAME = trevor.hanson	DESIGNED -	REVISED -
	DRAWN -	REVISED -
	CHECKED -	REVISED -
PLOT DATE = 1/7/2025	DATE -	REVISED -

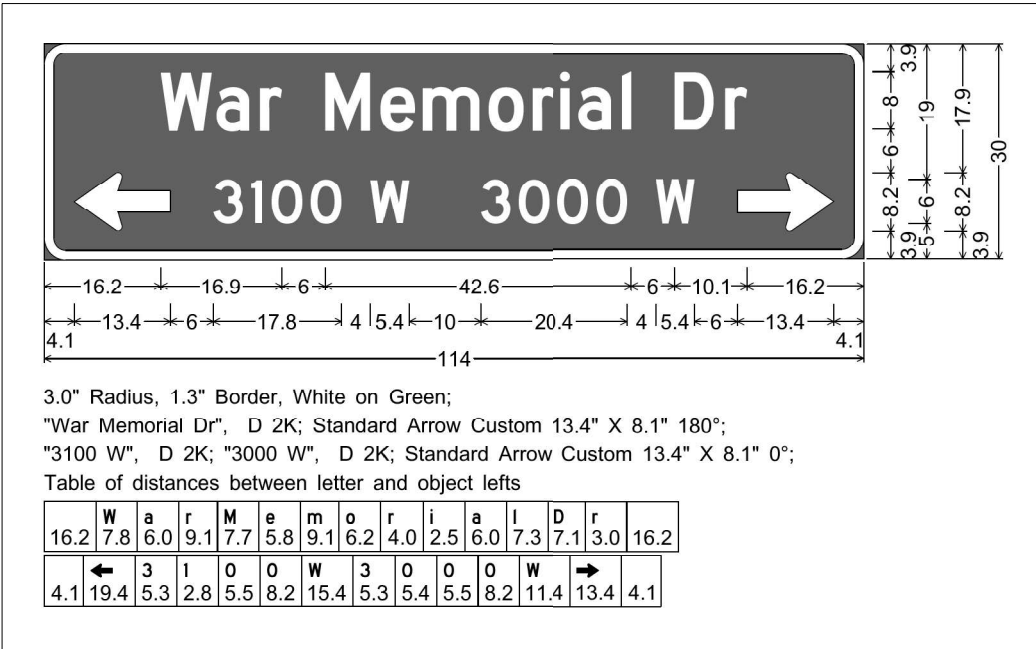
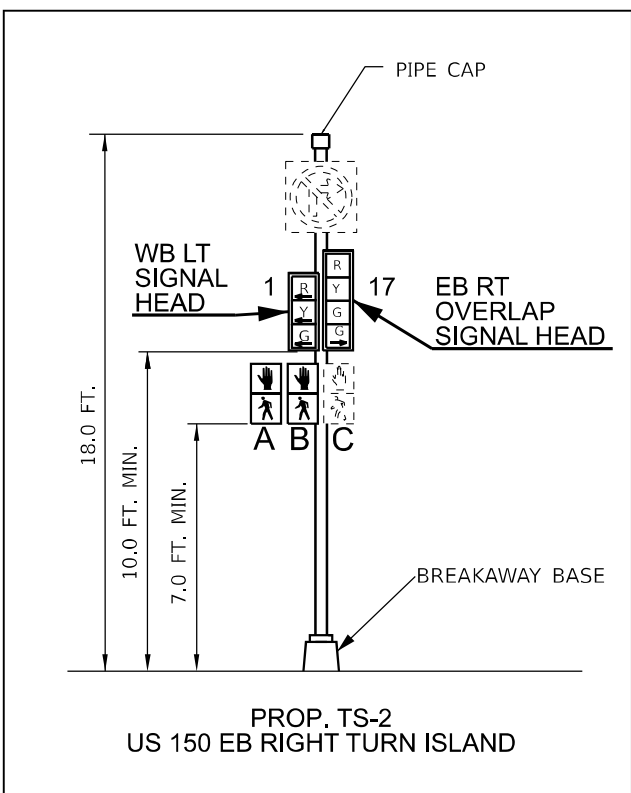
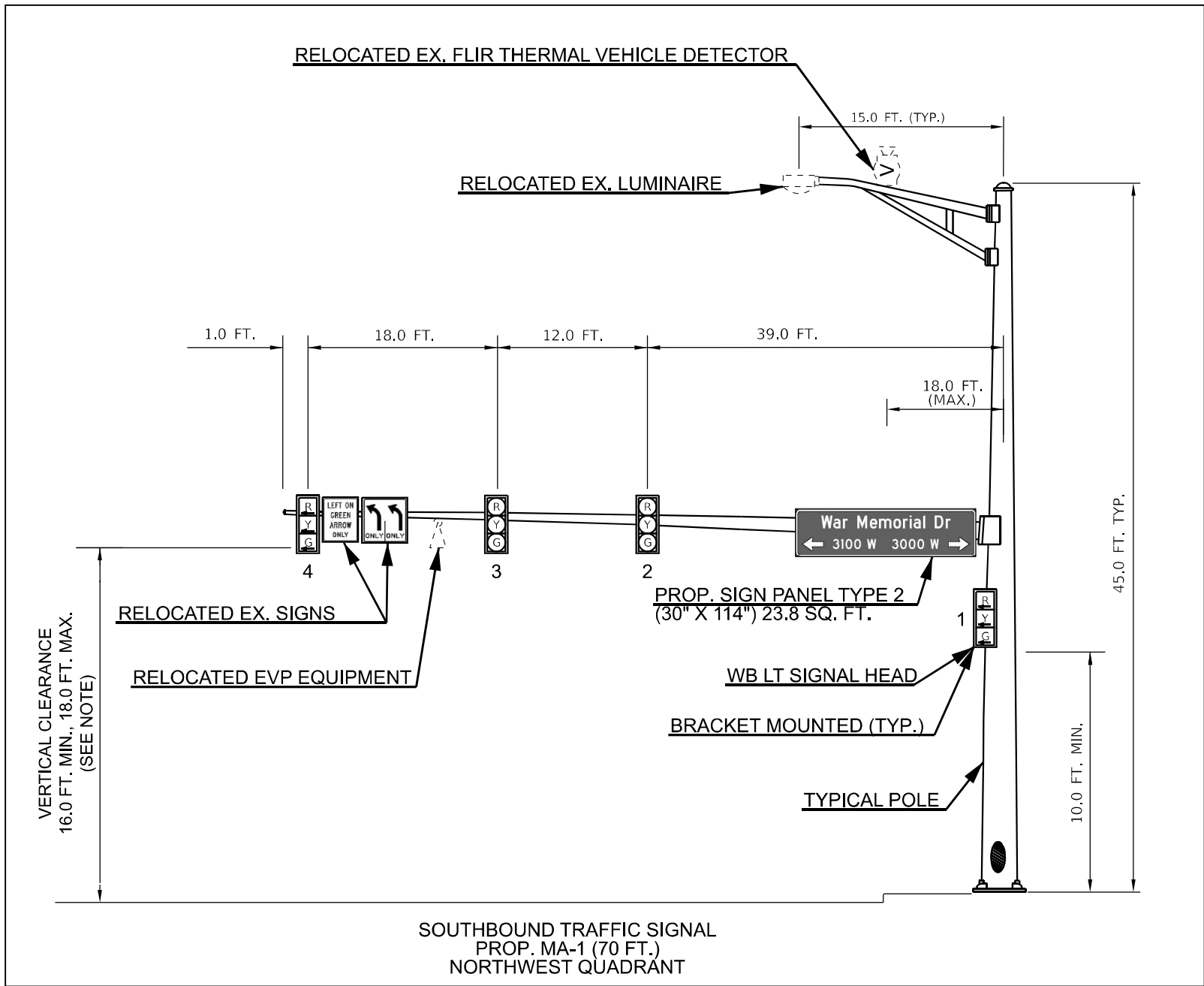
**STATE OF ILLINOIS**  
**DEPARTMENT OF TRANSPORTATION**

## PROPOSED TRAFFIC SIGNAL PLANS

SCALE:	SHEET	OF	SHEETS	STA.	TO STA.
--------	-------	----	--------	------	---------

F.A.P. RTE.	SECTION	COUNTY	TOTAL SHEETS	SHEET NO.
317	(116)TS-3	PEORIA	9	8
		CONTRACT NO. 68J80		
ILLINOIS		FED. AID PROJECT		

MODEL: Default  
FILE NAME: c:\pwwork\jwd\hanson\j0039664\Signals Complete.dgn



- NOTES:
1. THE VERTICAL CLEARANCE REQUIREMENTS BETWEEN THE BOTTOM OF THE LOWEST SIGNAL HEAD BACKPLATE AND THE HIGHEST POINT OF THE PAVEMENT ARE AS FOLLOWS: 16.0 FT. (MIN.) AND 18.0 FT. (MAX.)
  2. ALL TRAFFIC SIGNAL SECTIONS SHALL HAVE 12" RED SINGLE LED LENSES.
  3. THE RED SECTIONS OF THE SIGNAL HEADS SHARING THE SAME MAST ARM SHALL BE LEVEL WITH ONE ANOTHER.
  4. THE CONTRACTOR SHALL RELOCATE ALL OTHER EXISTING SIGNS FROM THE REMOVED MAST ARM TO THE PROPOSED MAST ARM. THIS WORK WILL NOT BE PAID FOR SEPARATELY, BUT SHALL BE INCLUDED IN THE COST OF THE PROPOSED MAST ARM.

NOT TO SCALE

	USER NAME   = trevor.hanson	DESIGNED   -	REVISED   -	STATE OF ILLINOIS DEPARTMENT OF TRANSPORTATION	PROPOSED MAST ARM AND TRAFFIC SIGNAL POST DETAILS				F.A.P. RTE.	SECTION		COUNTY	TOTAL SHEETS	SHEET NO.		
		DRAWN   -	REVISED   -						317	(116)TS-3		PEORIA	9	9		
		CHECKED  -	REVISED  -								CONTRACT NO. 68J80					
	PLOT DATE   = 1/7/2025	DATE   -	REVISED  -						SCALE:		SHEET	OF	SHEETS	STA.	TO STA.	
												ILLINOIS		FED. AID PROJECT		