

INDEX OF SHEETS

- 1 COVER SHEET
- 2 SUMMARY OF QUANTITIES
- 3 MISSOURI AVENUE PUMP STATION - COLLECTOR WELL CLEANING
- 4 GENERAL DETAILS

HIGHWAY STANDARDS

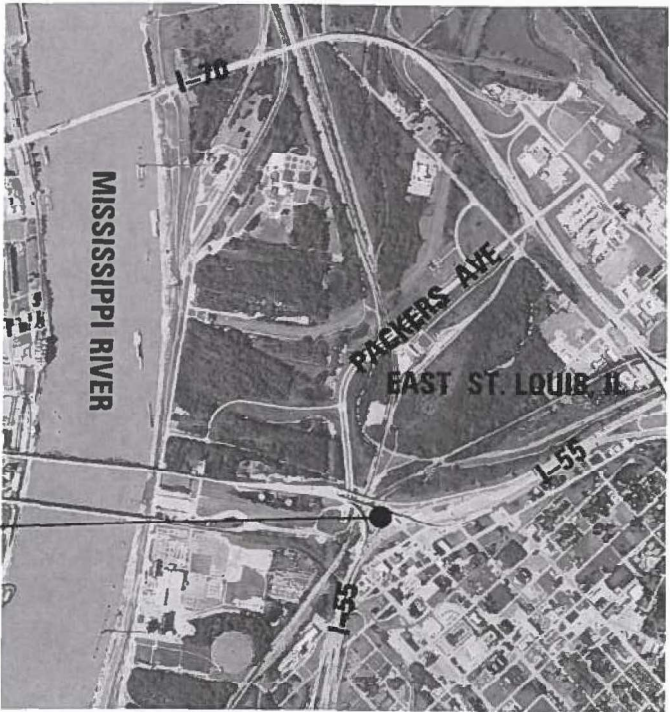
- 000001-06 STANDARD SYMBOLS, ABBREVIATIONS AND PATTERNS
- 701901-10 TRAFFIC CONTROL DEVICES

STATE OF ILLINOIS
DEPARTMENT OF TRANSPORTATION

PROPOSED
HIGHWAY PLANS

FAI 70 (I-55/I-64/IL 3)
SECTION 82-4PS-3
MISSOURI AVENUE PUMP STATION
COLLECTOR WELL CLEANING
ST. CLAIR COUNTY

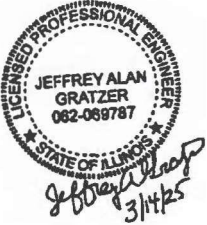
C-98-105-24



MISSOURI AVE.
PUMP STATION

ST. CLAIR COUNTY

GROSS LENGTH = N/A
NET LENGTH = N/A



JEFFREY A. GRATZER
REGISTERED PROFESSIONAL ENGINEER
STATE OF ILLINOIS NO. 062.069787
LICENSE EXPIRES NOVEMBER 30, 2025

DATE

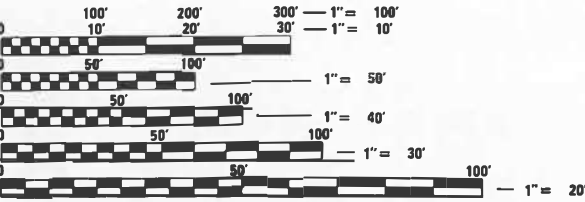
PLANS PREPARED BY:



F.A.J. RTE.	SECTION	COUNTY	TOTAL SHEETS	SHEET NO.
*	82-4PS-3	ST. CLAIR	4	1
		ILLINOIS	CONTRACT NO. 76T70	

WI-055/064/IL 003

D-98-043-24



FULL SIZE PLANS HAVE BEEN PREPARED USING STANDARD
ENGINEERING SCALES. REDUCED SIZED PLANS WILL NOT
CONFORM TO STANDARD SCALES. IN MAKING MEASUREMENTS
ON REDUCED PLANS, THE ABOVE SCALES MAY BE USED.

J.U.L.I.E.
JOINT UTILITY LOCATION INFORMATION FOR EXCAVATION
1-800-892-0123
OR 811

PROJECT ENGINEER: CHERYL KEPLAR
PROJECT MANAGER: RICHARD BARBEE

CONTRACT NO. 76T70

STATE OF ILLINOIS
DEPARTMENT OF TRANSPORTATION

SUBMITTED March 12, 2025
Lora Remy REGIONAL ENGINEER

May 9, 2025
Scott A. Etkin ENGINEER OF DESIGN AND ENVIRONMENT

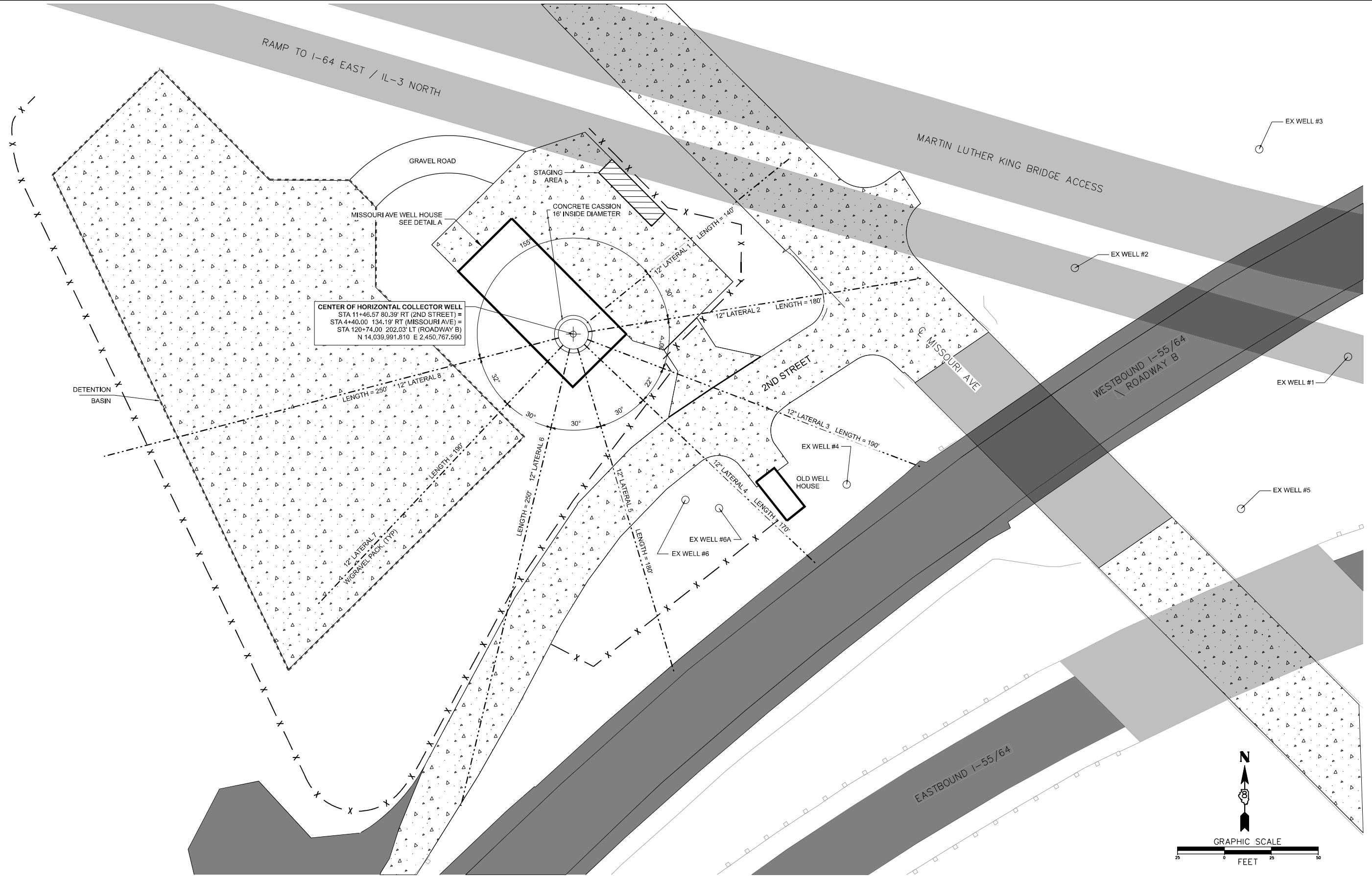
May 9, 2025
Cheryl Keplar DIRECTOR OF HIGHWAYS PROJECT IMPLEMENTATION

PRINTED BY THE AUTHORITY
OF THE STATE OF ILLINOIS

SUMMARY OF QUANTITIES

[illegible]

P:\Donohue\WD*5_IDOT - Missouri Avenue Pump Station - Collector Well Cleaning (Project)\12_CADD\DesignFiles\0876170-SHT-PLAN.dgn



m3
ENGINEERING GROUP

USER NAME = Mike.Brown
PLOT SCALE = 25 FEET PER INCH
PLOT DATE = 1/29/2025

DESIGNED - REK
DRAWN - MRB
CHECKED - JAG
DATE - 1/29/2025

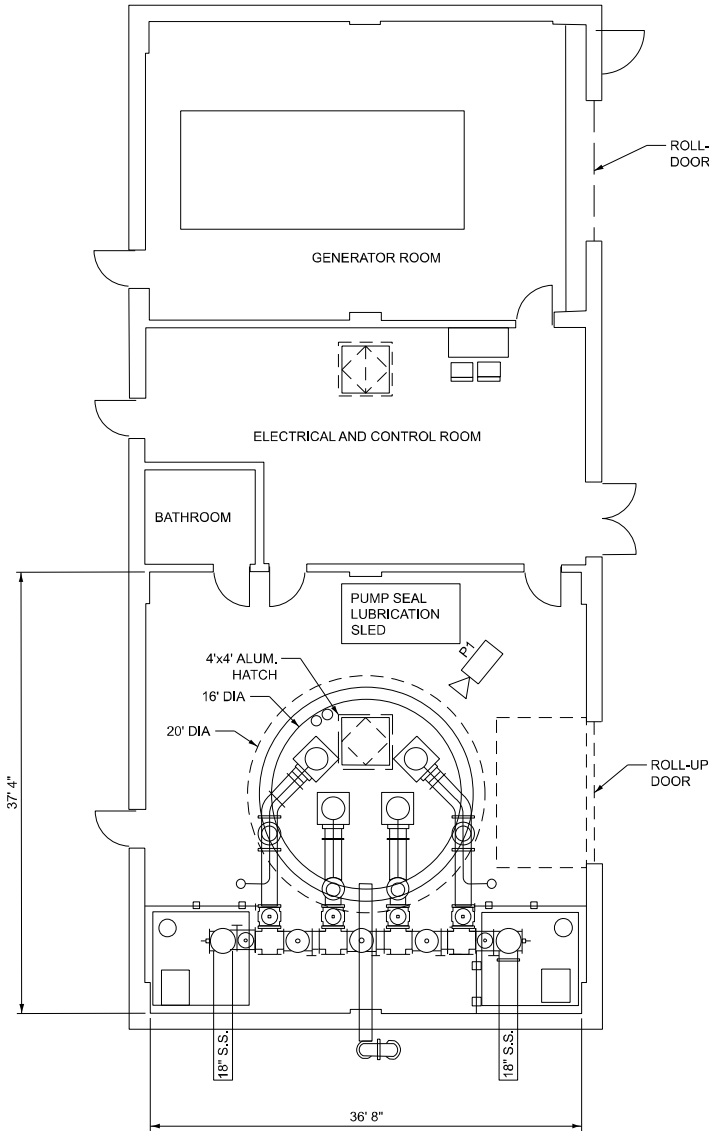
REVISED -
REVISED -
REVISED -
REVISED -

STATE OF ILLINOIS
DEPARTMENT OF TRANSPORTATION

MISSOURI AVENUE PUMP STATION
COLLECTOR WELL CLEANING

SCALE: SHEET OF SHEETS STA. TO STA.

F.A.I. RTE.	SECTION	COUNTY	TOTAL SHEETS	SHEET NO.
*	82-4PS-3	ST. CLAIR	4	3
* I-055/064/IL 003		CONTRACT NO. 76170		
ILLINOIS		FED. AID PROJECT		



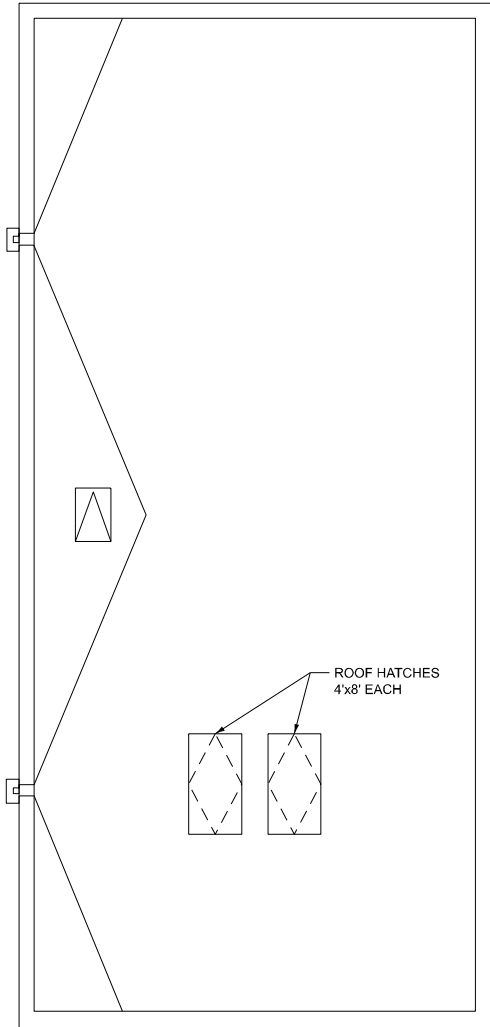
DETAIL A - FLOOR PLAN

CONTRACT 76099 MISSOURI AVE WELL HOUSE



P1

PUMP ROOM LAYOUT



DETAIL A - ROOF PLAN

CONTRACT 76099 MISSOURI AVE WELL HOUSE



GENERAL NOTES:

1. CONTRACTOR SHALL COORDINATE WITH DEPARTMENT FOR SHUT DOWN OF COLLECTOR WELL AND WELL PUMPS, PROVIDE DEPARTMENT WITH A MINIMUM OF 48 HOURS NOTICE PRIOR TO BEGINNING WORK.
2. CONTRACTOR SHALL SUPPORT EXISTING PIPING, VALVES, AND OTHER APPARATUS WHEN REMOVING EXISTING PUMPS FOR ACCESS. CONTRACTOR SHALL PROVIDE TEMPORARY CRANE FOR REMOVAL OF EXISTING PUMPS, AND PUMPS SHALL BE REMOVED THROUGH EXISTING ROOF HATCHES.
3. CONTRACTOR SHALL PROVIDE LOCATION OFF-SITE FOR THE STORAGE OF THE PUMPS WHILE THE COLLECTOR WELL IS BEING CLEANED.
4. CONTRACTOR SHALL PROTECT EXISTING PUMPS FROM DAMAGE DURING REMOVAL AND STORAGE. PROVIDE OWNER WITH STORAGE LOCATION. CONTRACTOR TO PROVIDE PROOF OF INSURANCE OF A VALUE THAT COVERS ALL PUMPS AND ASSOCIATED PARTS.
5. CONTRACTOR SHALL REINSTALL PUMPS, RECONNECT ALL EXISTING PIPES, VALVES, AND APPARATUS, UPON COMPLETION OF WORK. CONTRACTOR SHALL PROVIDE NEW GASKETS, BOLTS, AND OTHER COMPONENTS IF DAMAGED.
6. UPON COMPLETION OF WORK, CONTRACTOR SHALL RESTORE EXISTING FACILITIES BACK TO THE ORIGINAL WORKING CONDITION.