

STATE OF ILLINOIS  
DEPARTMENT OF TRANSPORTATION

F.A.P. RTE.	SECTION	COUNTY	TOTAL SHEETS	SHEET NO.
872	FAP 0872 23 SMART	LAKE	17	1
		ILLINOIS	CONTRACT NO. 62V39	

FOR INDEX OF SHEETS, SEE SHEET NO. 2

THIS PROJECT IS LOCATED IN THE VILLAGE OF  
ANTIOCH, AND THE TOWNSHIP OF ANTIOCH.

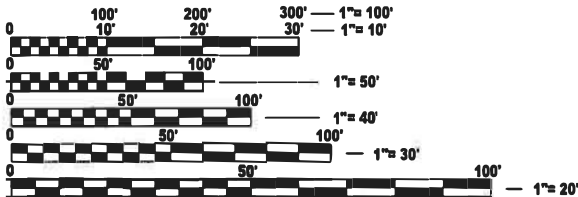
TRAFFIC DATA

FAP 872 (US 45): WISCONSIN STATE LINE TO IL 173  
ADT: 5,550 (2023)  
SPEED LIMIT: 55 MPH

PROPOSED  
HIGHWAY PLANS

FAP ROUTE 872 (US 45)  
LIMITS: WISCONSIN STATE LINE TO IL 173 (ROSECRANS RD)  
SECTION: FAP 0872 23 SMART  
SMART OVERLAY, NEW SHOULDERS  
LAKE COUNTY

C-91-019-24

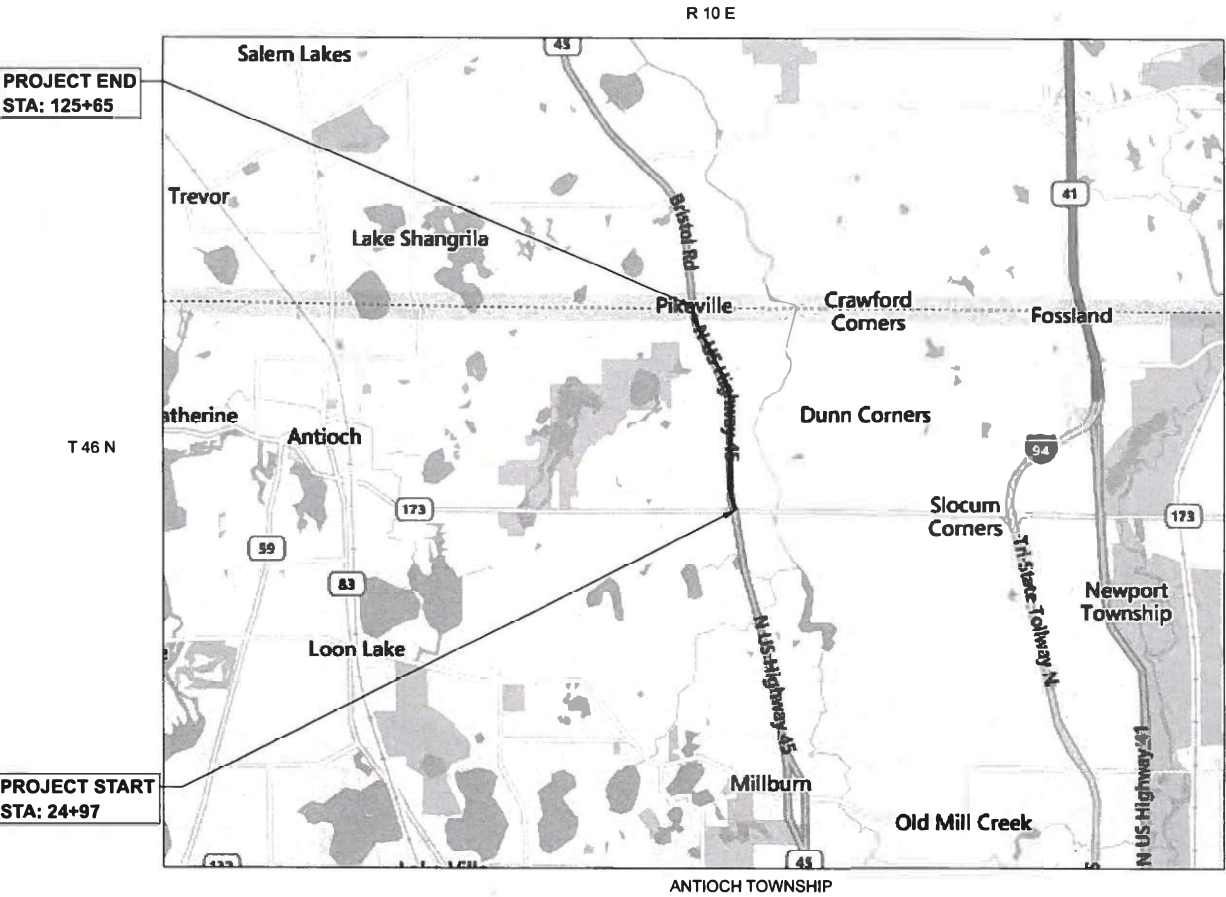


FULL SIZE PLANS HAVE BEEN PREPARED USING STANDARD  
ENGINEERING SCALES. REDUCED SIZED PLANS WILL NOT  
CONFORM TO STANDARD SCALES. IN MAKING MEASUREMENTS  
ON REDUCED PLANS, THE ABOVE SCALES MAY BE USED.

J.U.L.I.E.  
JOINT UTILITY LOCATION INFORMATION FOR EXCAVATION  
1-800-892-0123  
OR 811

PROJECT ENGINEER: RODRIGO LEDEZMA (847) 705-4580  
PROJECT MANAGER: J. ALAIN MIDY (847) 221-3056

CONTRACT NO. 62V39



GROSS LENGTH = 10,068 FT. = 1.907 MILE  
NET LENGTH = 10,068 FT. = 1.907 MILE



STATE OF ILLINOIS  
DEPARTMENT OF TRANSPORTATION

SUBMITTED March 17<sup>th</sup> 2025 Torres IR  
REGIONAL ENGINEER

May 9 2025 Sec Ed  
ENGINEER OF DESIGN AND ENVIRONMENT

May 9 2025 J. Midy  
DIRECTOR OF HIGHWAYS PROJECT IMPLEMENTATION

PRINTED BY THE AUTHORITY  
OF THE STATE OF ILLINOIS

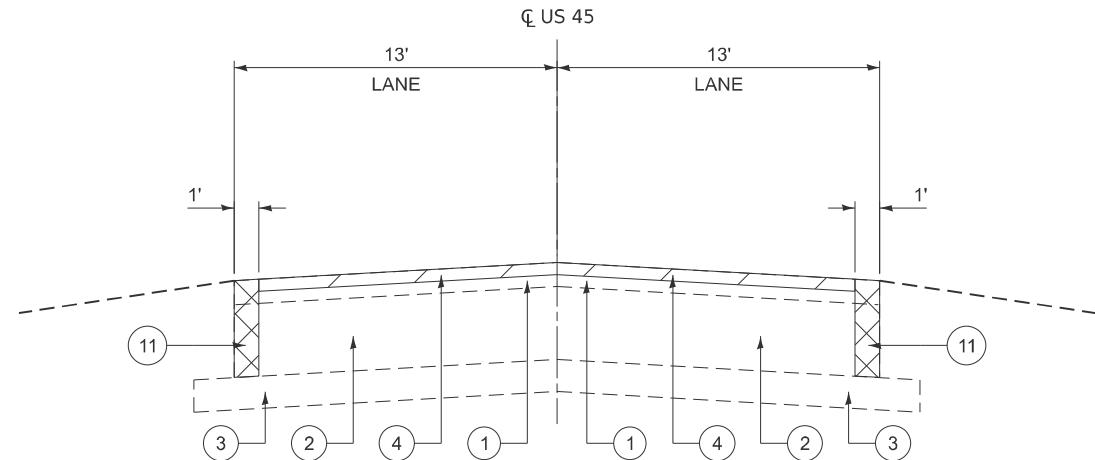


MODEL: SQO-Q1 (Sheet)  
FILE NAME: c:\p\work\kwid\illinois.gov\justin.king@illinois.gov\d1028534\ID101724-shl-SQO.dgn

SUMMARY OF QUANTITIES					TYPE      CODE					
					URBAN	URBAN	URBAN	URBAN	URBAN	URBAN
					ROADWAY					
					100% STATE					
	Code No.	Item	Unit	Total Quantity	0005					
	20200100	EARTH EXCAVATION	CU YD	4750	4750					
	31101400	SUBBASE GRANULAR MATERIAL, TYPE B 6"	SQ YD	8549	8549					
	35501308	HOT-MIX ASPHALT BASE COURSE, 6"	SQ YD	166	166					
	40600290	BITUMINOUS MATERIALS (TACK COAT)	POUND	12653	12653					
	40600370	LONGITUDINAL JOINT SEALANT	FOOT	10068	10068					
	40600400	MIXTURE FOR CRACKS, JOINTS, AND FLANGEWAYS	TON	43	43					
	40600982	HOT-MIX ASPHALT SURFACE REMOVAL - BUTT JOINT	SQ YD	83	83					
	40604062	HOT-MIX ASPHALT SURFACE COURSE, IL-9.5, MIX "D", N70	TON	2378	2378					
	44000100	PAVEMENT REMOVAL	SQ YD	2142	2142					
	44000155	HOT-MIX ASPHALT SURFACE REMOVAL, 1 1/2"	SQ YD	28183	28183					
	44000500	COMBINATION CURB AND GUTTER REMOVAL	FOOT	30	30					
	44201785	CLASS D PATCHES, TYPE I, 12 INCH	SQ YD	71	71					
	44201789	CLASS D PATCHES, TYPE II, 12 INCH	SQ YD	564	564					
	44201794	CLASS D PATCHES, TYPE III, 12 INCH	SQ YD	423	423					
	44201796	CLASS D PATCHES, TYPE IV, 12 INCH	SQ YD	353	353					
	48102100	AGGREGATE WEDGE SHOULDER, TYPE B	TON	364	364					
	48203029	HOT-MIX ASPHALT SHOULDERS, 8"	SQ YD	8549	8549					
	4200108	SHOULDER RUMBLE STRIPS, 8 INCH	FOOT	20136	20136					
*	66900200	NON-SPECIAL WASTE DISPOSAL	CU YD	1245	1245					
*	66900530	SOIL DISPOSAL ANALYSIS	EACH	4	4					
*	66901001	REGULATED SUBSTANCES PRE-CONSTRUCTION PLAN	L SUM	1	1					
*	66901003	REGULATED SUBSTANCES FINAL CONSTRUCTION REPORT	L SUM	1	1					

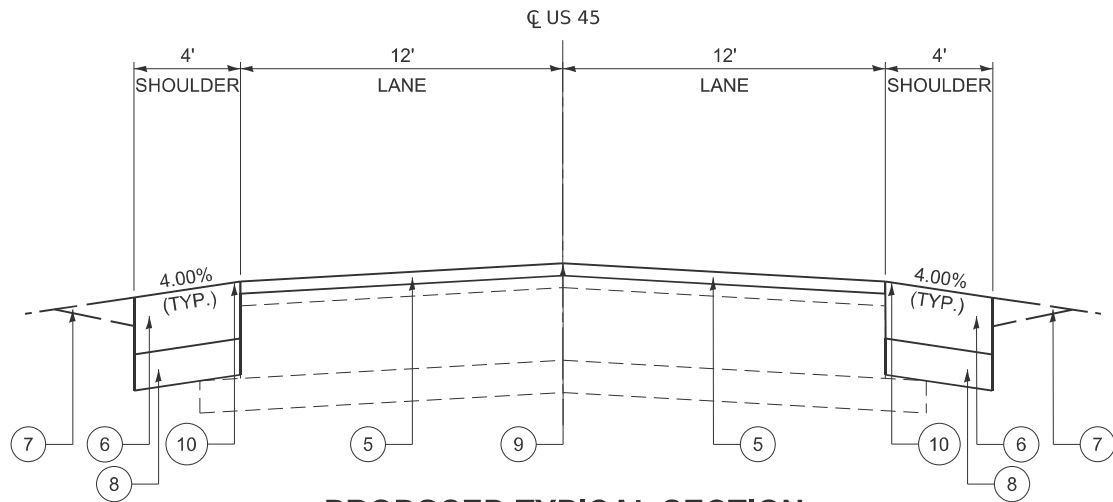
SUMMARY OF QUANTITIES					TYPE      CODE					
					URBAN	URBAN	URBAN	URBAN	URBAN	URBAN
					ROADWAY					
					100% STATE					
	Code No.	Item	Unit	Total Quantity	0005					
*	66901006	REGULATED SUBSTANCES MONITORING	CAL DA	10	10					
	67100100	MOBILIZATION	L SUM	1	1					
	70100450	TRAFFIC CONTROL AND PROTECTION, STANDARD 701201	L SUM	1	1					
	70100460	TRAFFIC CONTROL AND PROTECTION, STANDARD 701306	L SUM	1	1					
	70100500	TRAFFIC CONTROL AND PROTECTION, STANDARD 701326	L SUM	1	1					
	70300100	SHORT TERM PAVEMENT MARKING	FOOT	11048	11048					
	70300150	SHORT TERM PAVEMENT MARKING REMOVAL	SQ FT	736.5	736.5					
	70300211	TEMPORARY PAVEMENT MARKING LETTERS AND SYMBOLS - PAINT	SQ FT	232.2	232.2					
	70300221	TEMPORARY PAVEMENT MARKING - LINE 4"- PAINT	FOOT	93828	93828					
	70300241	TEMPORARY PAVEMENT MARKING - LINE 6"- PAINT	FOOT	894	894					
	70300281	TEMPORARY PAVEMENT MARKING - LINE 24"- PAINT	FOOT	117	117					
*	78000100	THERMOPLASTIC PAVEMENT MARKING - LETTERS AND SYMBOLS	SQ FT	77.4	77.4					
*	78000200	THERMOPLASTIC PAVEMENT MARKING - LINE 4"	FOOT	23144	23144					
*	78000400	THERMOPLASTIC PAVEMENT MARKING - LINE 6"	FOOT	298	298					
*	78000650	THERMOPLASTIC PAVEMENT MARKING - LINE 24"	FOOT	39	39					
*	78100100	RAISED REFLECTIVE PAVEMENT MARKER	EACH	241	241					
	78300200	RAISED REFLECTIVE PAVEMENT MARKER REMOVAL	EACH	241	241					
	X2020110	GRADING AND SHAPING SHOULDERS	UNIT	202	202					
	X6420114	CENTER LINE - RUMBLE STRIP - 16"	FOOT	7665	7665					
	X6700407	ENGINEER'S FIELD OFFICE, TYPE A (D1)	CAL MO	12	12					
*	X7800815	HOT SPRAY THERMOPLASTIC PAVEMENT MARKING LINE - 4"	FOOT	8133	8133					
	X7200061	TEMPORARY INFORMATION SIGNING	SQ FT	154.2	154.2					

				STATE OF ILLINOIS DEPARTMENT OF TRANSPORTATION				SUMMARY OF QUANTITIES US 45 - WISCONSIN STATE LINE TO IL 173 (ROSECRANS RD)				F.A.P RTE.	SECTION	COUNTY	TOTAL SHEETS	SHEET NO.
												872	FAP 0872 23 SMART	LAKE	17	3
												CONTRACT NO. 62V39				
												ILLINOIS   FED. AID PROJECT				



EXISTING TYPICAL SECTION

STA. 24+97 TO STA. 125+65



PROPOSED TYPICAL SECTION

STA. 24+97 TO STA. 125+65

LEGEND

- 1 EXISTING SURFACE COURSE, ±4"
- 2 EXISTING BASE COURSE, ±9"
- 3 EXISTING SUBBASE
- 4 PROPOSED SURFACE REMOVAL, 1 ½"
- 5 PROPOSED HMA SURFACE COURSE, IL-9.5, MIX "D", N70, 1 ½"
- 6 PROPOSED HMA SHOULDERS, 8"
- 7 PROPOSED AGGREGATE WEDGE SHOULDERS
- 8 PROPOSED SUBBASE GRANULAR MATERIAL, TYPE B, 6"
- 9 PROPOSED CENTER LINE RUMBLE STRIPS, 16"
- 10 PROPOSED SHOULDER RUMBLE STRIPS, 8"
- 11 PROPOSED PAVEMENT REMOVAL

NOTE:

- 1. THE CONTRACTOR SHALL MILL BEFORE PATCHING.
- 2. THE LONGITUDINAL JOINT SEALANT SHALL BE PLACED ON THE MILLED SURFACE.

HOT-MIX ASPHALT MIXTURE REQUIREMENTS		QMP
MIXTURE TYPE	AIR VOIDS @ N <sub>design</sub>	
PAVEMENT RESURFACING		
HOT-MIX ASPHALT SURFACE COURSE, IL-9.5, MIX "D", N70, 1 ½"	4% @ 70 Gyr.	QCP
HMA SHOULDERS, 8"		
HOT-MIX ASPHALT SURFACE COURSE, IL-9.5, MIX "D", N70, 1 ½"	4% @ 70 Gyr.	QC/QA
HOT-MIX ASPHALT BINDER COURSE IL-19.0, N70, 6 ½"	4% @ 70 Gyr.	QC/QA
DRIVEWAYS		
HOT-MIX ASPHALT SURFACE COURSE, IL-9.5, MIX "D", N70, 2"	4% @ 70 Gyr.	QC/QA
HOT-MIX ASPHALT BASE COURSE IL-19.0, N70, 6"	4% @ 70 Gyr.	QC/QA
PATCHING		
CLASS D PATCHES (HMA BINDER IL-19 mm)	4% @ 70 Gyr.	QC/QA
QMP Designations: Quality Control/Quality Assurance (QC/QA); Quality Control for Performance (QCP); Pay for Performance (PFP)		

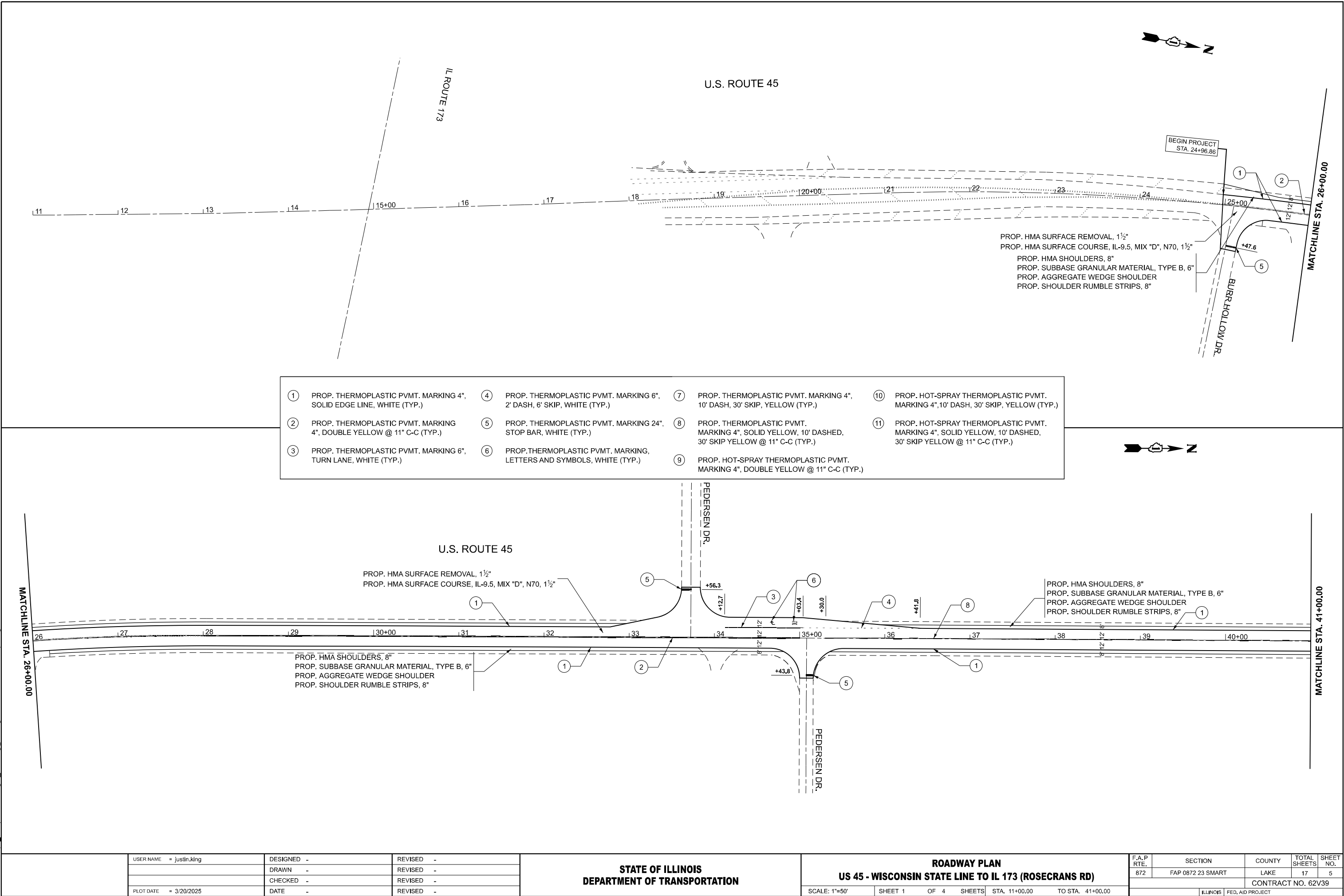
THE UNIT WEIGHT USED TO CALCULATE ALL HMA SURFACE MIXTURE QUANTITIES IS 112 LBS/SQ YD/IN.

THE "AC TYPE" FOR POLYMERIZED HMA MIXES SHALL BE "SBS/SBR PG 76-22" AND FOR NON-POLYMERIZED HMA THE "AC TYPE" SHALL BE "PG 64-22" UNLESS MODIFIED BY RECLAIMED MATERIALS SPECIFICATIONS.

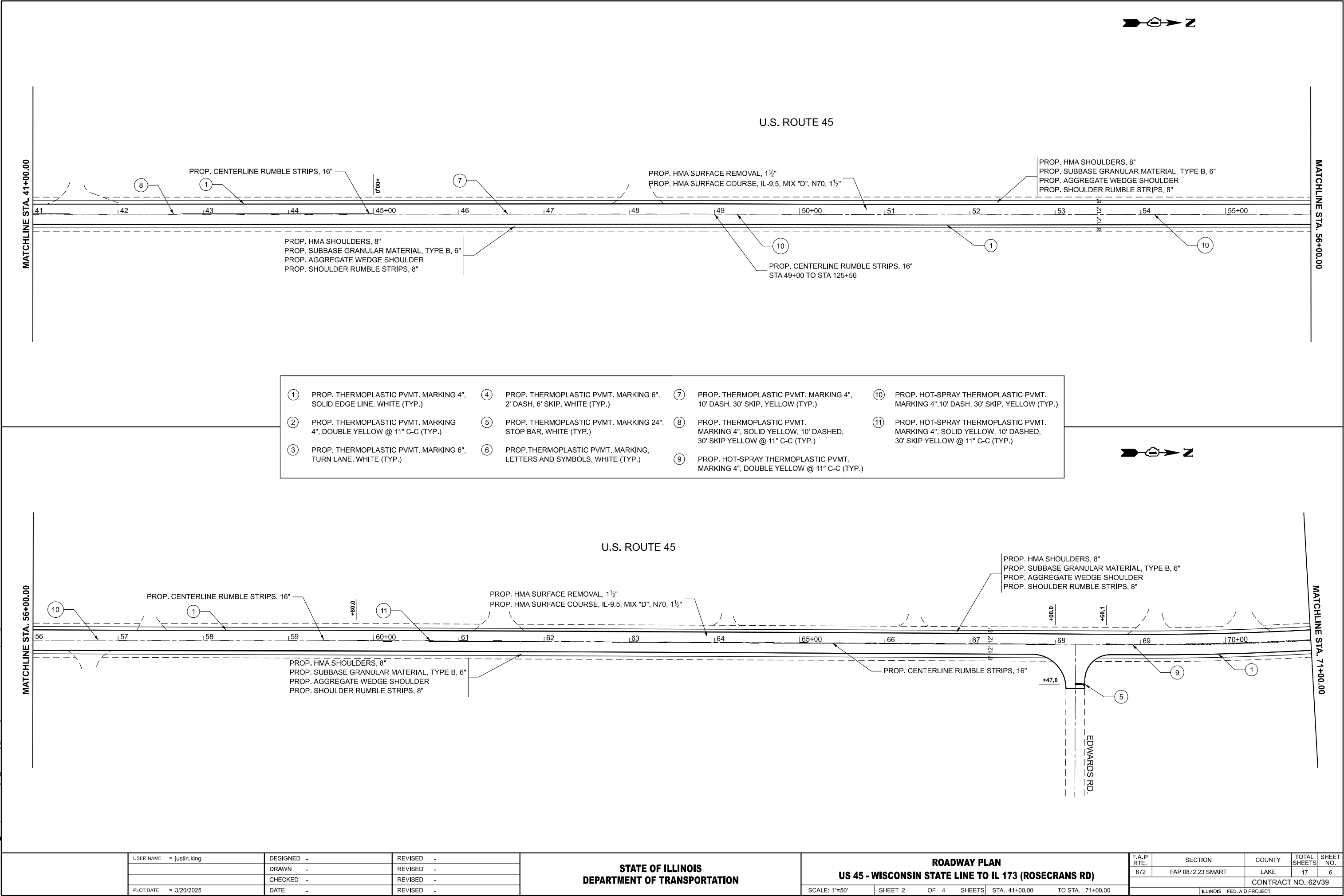
MODEL: TypSec-01 (Sheet)  
FILE NAME: c:\p\work\pvt\illinois.gov\justin.king@illinois.gov\d1028534\101724-sh-typical.dgn

	USER NAME = Jacob,Roth	DESIGNED -	REVISED -	STATE OF ILLINOIS DEPARTMENT OF TRANSPORTATION	TYPICAL SECTIONS US 45 - WISCONSIN STATE LINE TO IL 173 (ROSECRANS RD)		F.A.P RTE.	SECTION	COUNTY	TOTAL SHEETS	SHEET NO.
		DRAWN -	REVISED -				872	FAP 0872 23 SMART	LAKE	17	4
		CHECKED -	REVISED -				CONTRACT NO. 62V39				
	PLOT DATE = 3/14/2025	DATE -	REVISED -				ILLINOIS FED. AID PROJECT				
SCALE:		SHEET 1	OF 1	SHEETS	STA.	TO STA.					

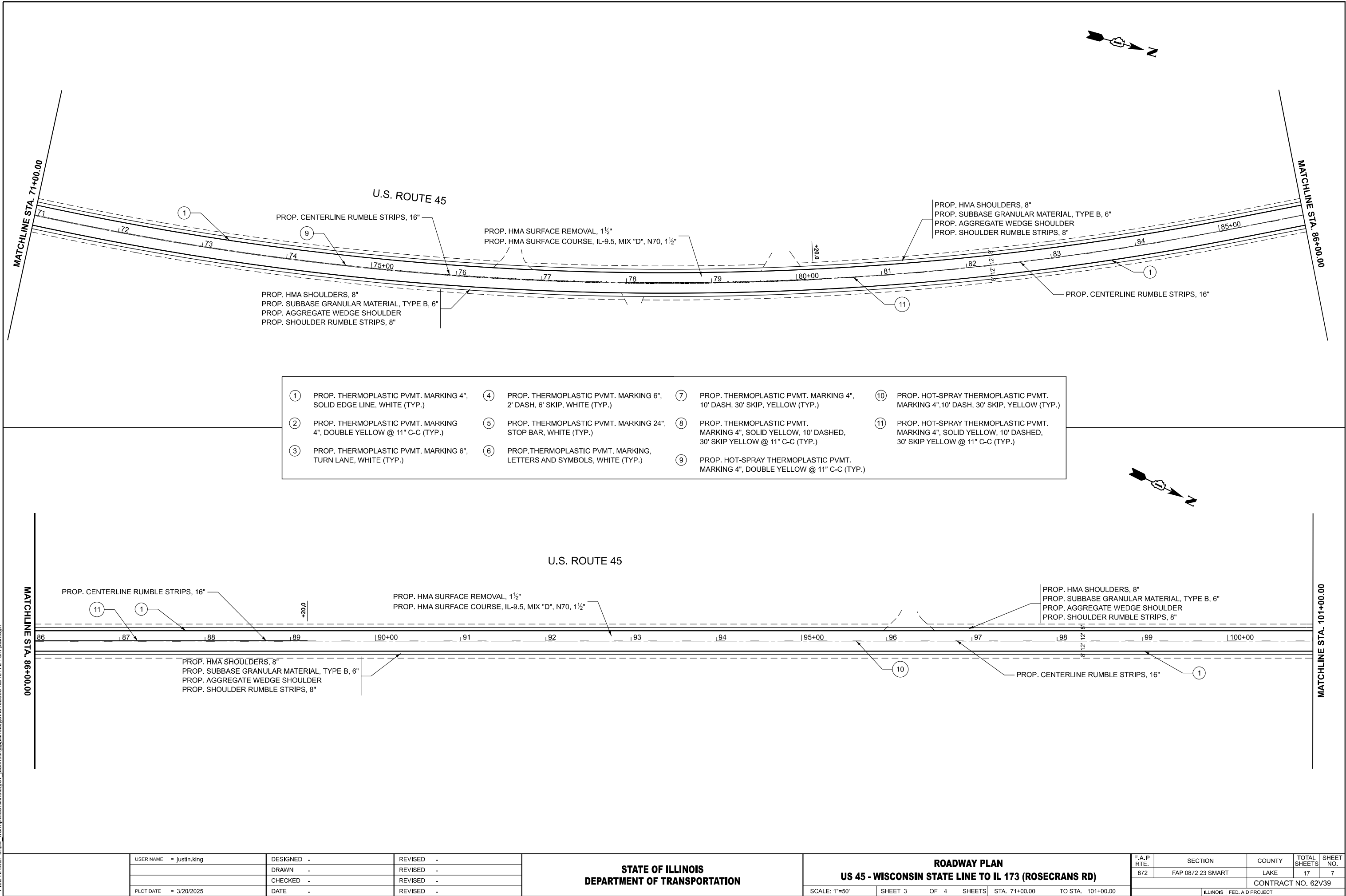
MODEL: US45 - RdwyPlan01  
FILE NAME: c:\p\work\pwrtd\illinois.gov\1028534\101724-shp-plan.dgn



MODEL: US45 - RdwyPlan02  
FILE NAME: c:\p\work\pilot\illinois.gov\justin.king@illinois.gov\101724-shr-plan.dgn



MODEL: US45 - RdwyPlan03  
FILE NAME: c:\pwworking\illinois.gov\1028534\101724-shp-plan.dgn



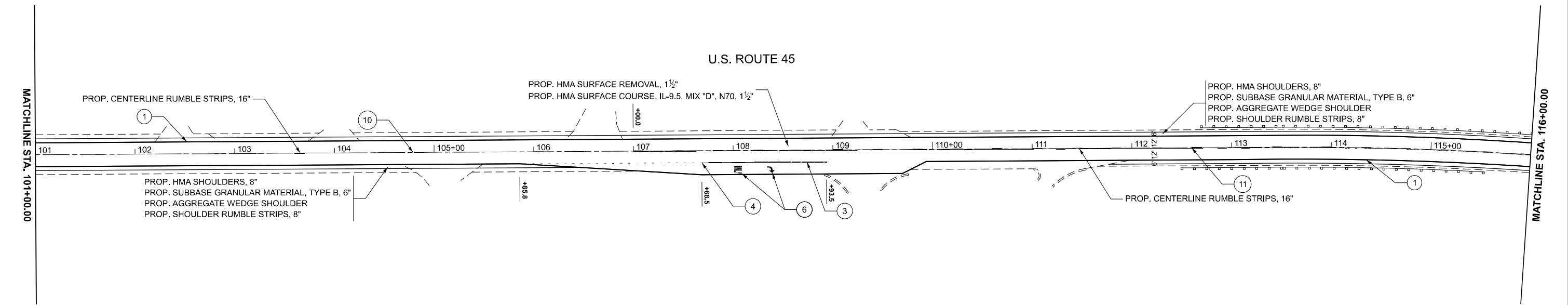
	USER NAME	= justin.king	DESIGNED	-	REVISED	-
	DRAWN	-	REVISION	-	REVISION	-
	CHECKED	-	REVISION	-	REVISION	-
	PLOT DATE	= 3/20/2025	DATE	-	REVISION	-

STATE OF ILLINOIS	
DEPARTMENT OF TRANSPORTATION	

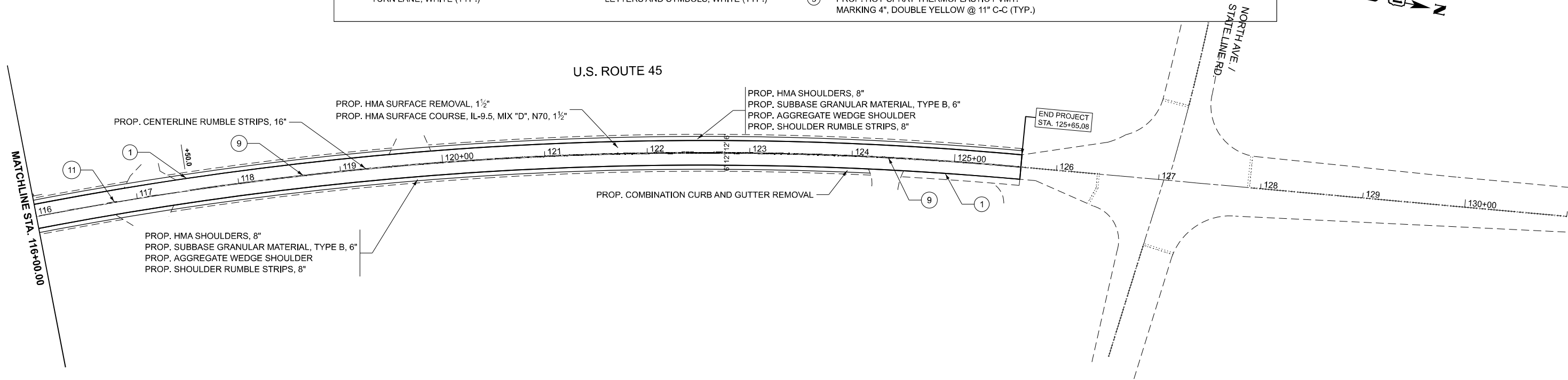
ROADWAY PLAN	
US 45 - WISCONSIN STATE LINE TO IL 173 (ROSECRANS RD)	
SCALE: 1"=50'	SHEET 3 OF 4 SHEETS
STA. 71+00.00	TO STA. 101+00.00

F.A.P. RTE.	SECTION	COUNTY	TOTAL SHEETS	SHEET NO.
872	FAP 0872 23 SMART	LAKE	17	7
CONTRACT NO. 62V39				
ILLINOIS FED. AID PROJECT				

MODEL: US45 - RdwyPlan04  
FILE NAME: c:\p\work\pilot\illinois.gov\102853\101724-shp-plan.dgn



- |                                                                        |                                                                        |                                                                                                    |                                                                                                              |
|------------------------------------------------------------------------|------------------------------------------------------------------------|----------------------------------------------------------------------------------------------------|--------------------------------------------------------------------------------------------------------------|
| ① PROP. THERMOPLASTIC PVMT. MARKING 4", SOLID EDGE LINE, WHITE (TYP.)  | ④ PROP. THERMOPLASTIC PVMT. MARKING 6", 2' DASH, 6' SKIP, WHITE (TYP.) | ⑦ PROP. THERMOPLASTIC PVMT. MARKING 4", 10' DASH, 30' SKIP, YELLOW (TYP.)                          | ⑩ PROP. HOT-SPRAY THERMOPLASTIC PVMT. MARKING 4", 10' DASH, 30' SKIP, YELLOW (TYP.)                          |
| ② PROP. THERMOPLASTIC PVMT. MARKING 4", DOUBLE YELLOW @ 11" C-C (TYP.) | ⑤ PROP. THERMOPLASTIC PVMT. MARKING 24", STOP BAR, WHITE (TYP.)        | ⑧ PROP. THERMOPLASTIC PVMT. MARKING 4", SOLID YELLOW, 10' DASHED, 30' SKIP YELLOW @ 11" C-C (TYP.) | ⑪ PROP. HOT-SPRAY THERMOPLASTIC PVMT. MARKING 4", SOLID YELLOW, 10' DASHED, 30' SKIP YELLOW @ 11" C-C (TYP.) |
| ③ PROP. THERMOPLASTIC PVMT. MARKING 6", TURN LANE, WHITE (TYP.)        | ⑥ PROP. THERMOPLASTIC PVMT. MARKING, LETTERS AND SYMBOLS, WHITE (TYP.) | ⑨ PROP. HOT-SPRAY THERMOPLASTIC PVMT. MARKING 4", DOUBLE YELLOW @ 11" C-C (TYP.)                   |                                                                                                              |



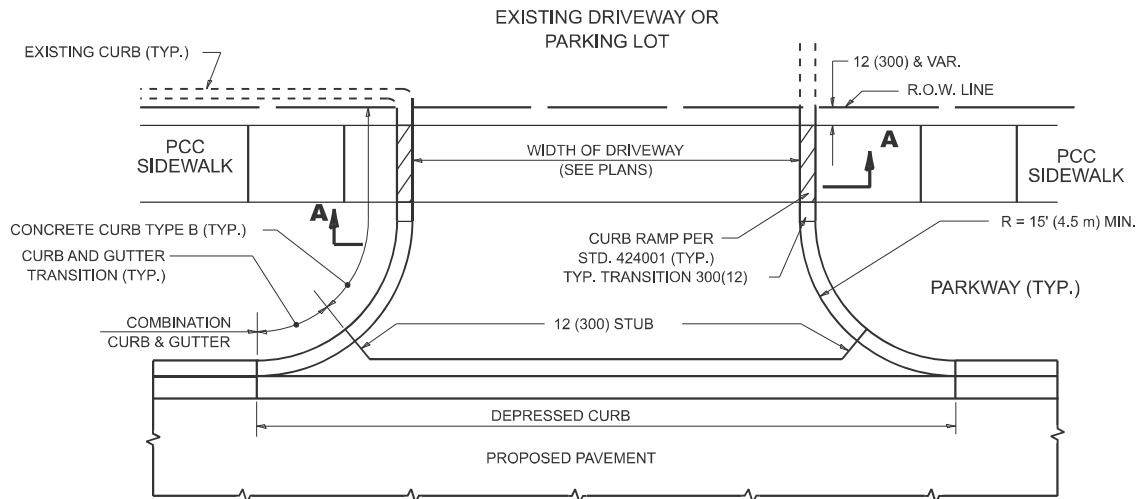
	USER NAME = justin.king	DESIGNED -	REVISED -
		DRAWN -	REVISED -
		CHECKED -	REVISED -
	PLOT DATE = 3/20/2025	DATE -	REVISED -

STATE OF ILLINOIS  
DEPARTMENT OF TRANSPORTATION

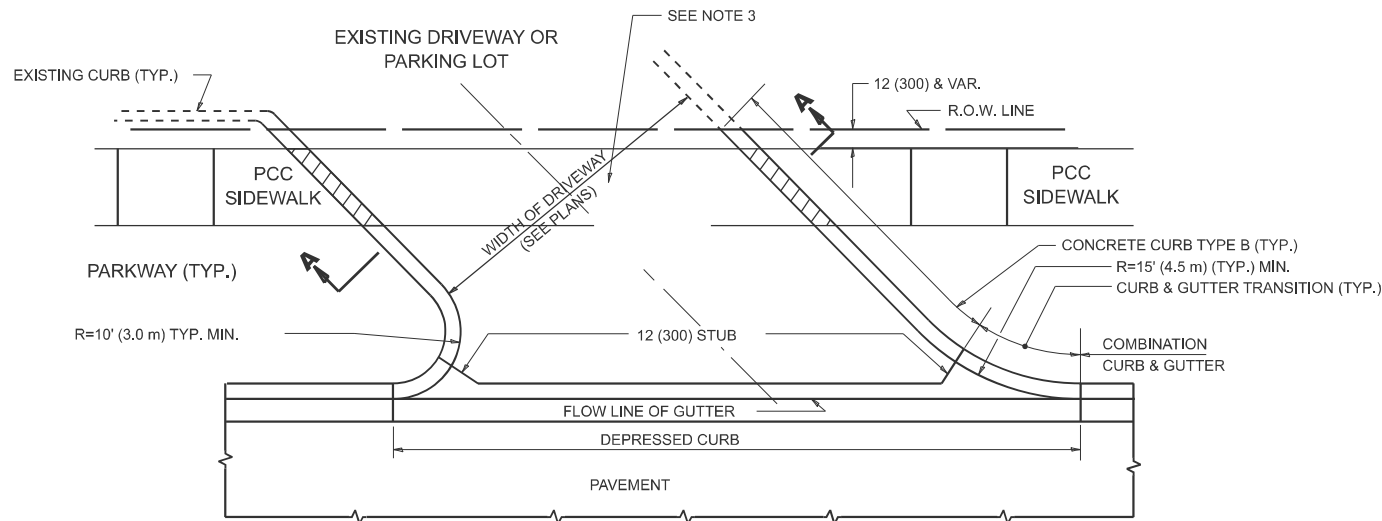
ROADWAY PLAN  
US 45 - WISCONSIN STATE LINE TO IL 173 (ROSECRANS RD)

SCALE: 1"=50' SHEET 4 OF 4 SHEETS STA. 101+00.00 TO STA. 131+00.00

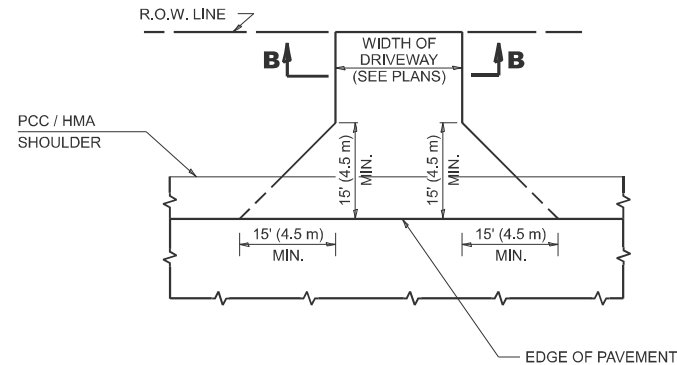
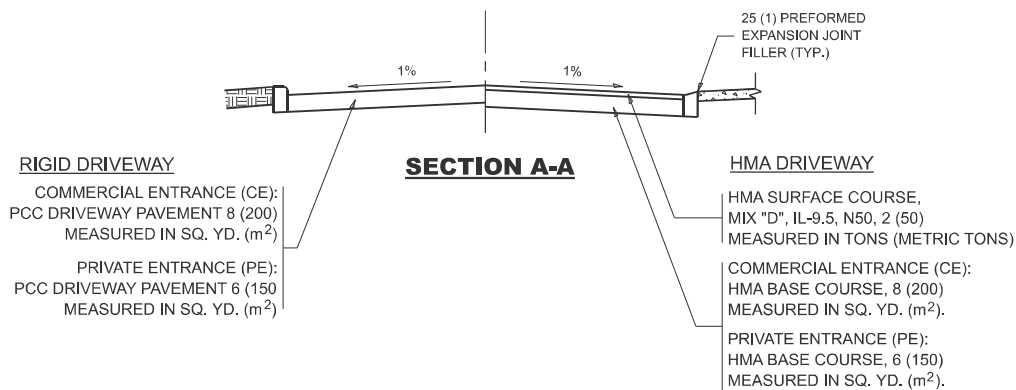
F.A.P. RTE.	SECTION	COUNTY	TOTAL SHEETS	SHEET NO.
872	FAP 0872 23 SMART	LAKE	17	8
CONTRACT NO. 62V39				
ILLINOIS FED. AID PROJECT				



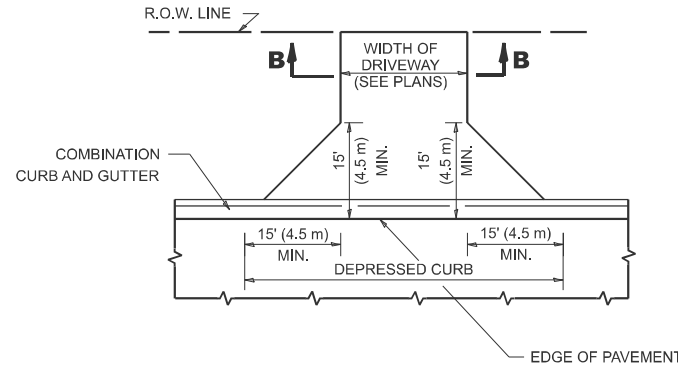
**WITH CONCRETE CURB, TYPE B**



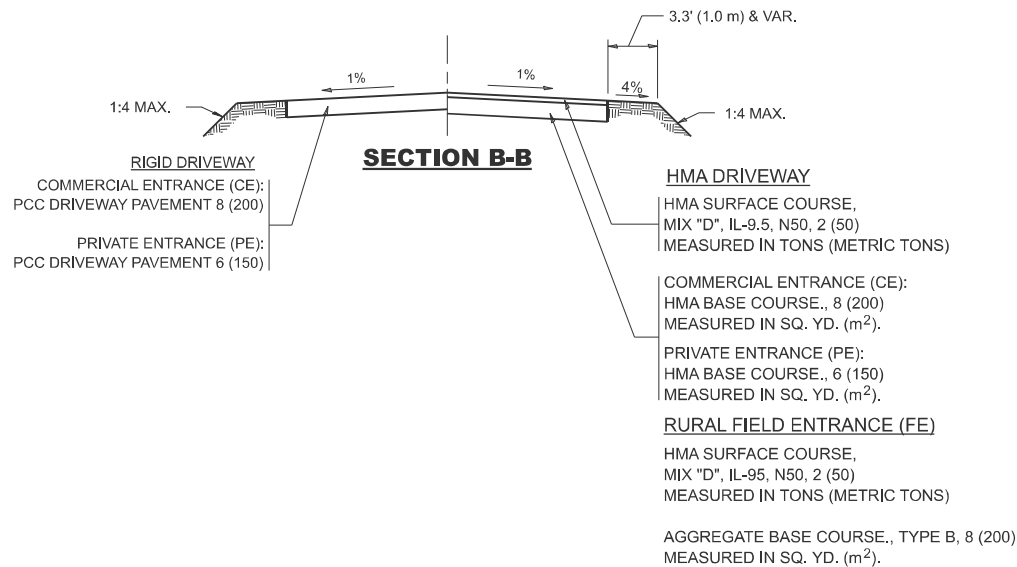
**WITH CONCRETE CURB, TYPE B**



**ADJACENT TO PCC / HMA SHOULDER**



**ADJACENT TO CURB AND GUTTER**



**GENERAL NOTES**

- DRIVEWAY SLOPES, LOCATIONS, & GEOMETRIC LAYOUT SHALL BE IN ACCORDANCE WITH THE LATEST EDITION OF THE "HANDBOOK FOR POLICY ON PERMITS FOR ACCESS DRIVEWAYS TO STATE HIGHWAYS". FOR FURTHER LAYOUT REQUIREMENTS, REFER TO ILLUSTRATIONS IN THE PERMIT HANDBOOK. DRIVEWAYS SHALL BE REPLACED IN KIND, UNLESS OTHERWISE NOTED ON THE PLANS.
- COMMERCIAL DRIVEWAYS SHALL BE CONSTRUCTED WITH CONCRETE CURB, TYPE B RETURNS EXCEPT WHEN THE SIDEWALK EDGE IS 4 FEET (1.2 METERS) OR LESS FROM THE BACK OF CURB, CONSTRUCT A FLARE DRIVEWAY WITHOUT CURB.

ALL DIMENSIONS ARE IN INCHES (MILLIMETERS) UNLESS OTHERWISE NOTED.

MODEL: BD-01 [Sheet]  
FILE NAME: c:\p\work\proj\road\proj\1028334\101724-shd-DistShts.dgn

USER NAME = Jacob,Roth	DESIGNED - R. SHAH	REVISED - R. BORO 06-11-08
	DRAWN -	REVISED - R. BORO 09-06-11
	CHECKED -	REVISED - K. SMITH 08-28-19
PLOT DATE = 3/14/2025	DATE - 11-04-95	REVISED - K. SMITH 11-18-22

**STATE OF ILLINOIS  
DEPARTMENT OF TRANSPORTATION**

**DRIVEWAY DETAILS - DISTANCE BETWEEN R.O.W.  
AND FACE OF CURB & EDGE OF SHOULDER >15'(4.5m)**

SCALE: NONE SHEET 1 OF 1 SHEETS STA. TO STA.

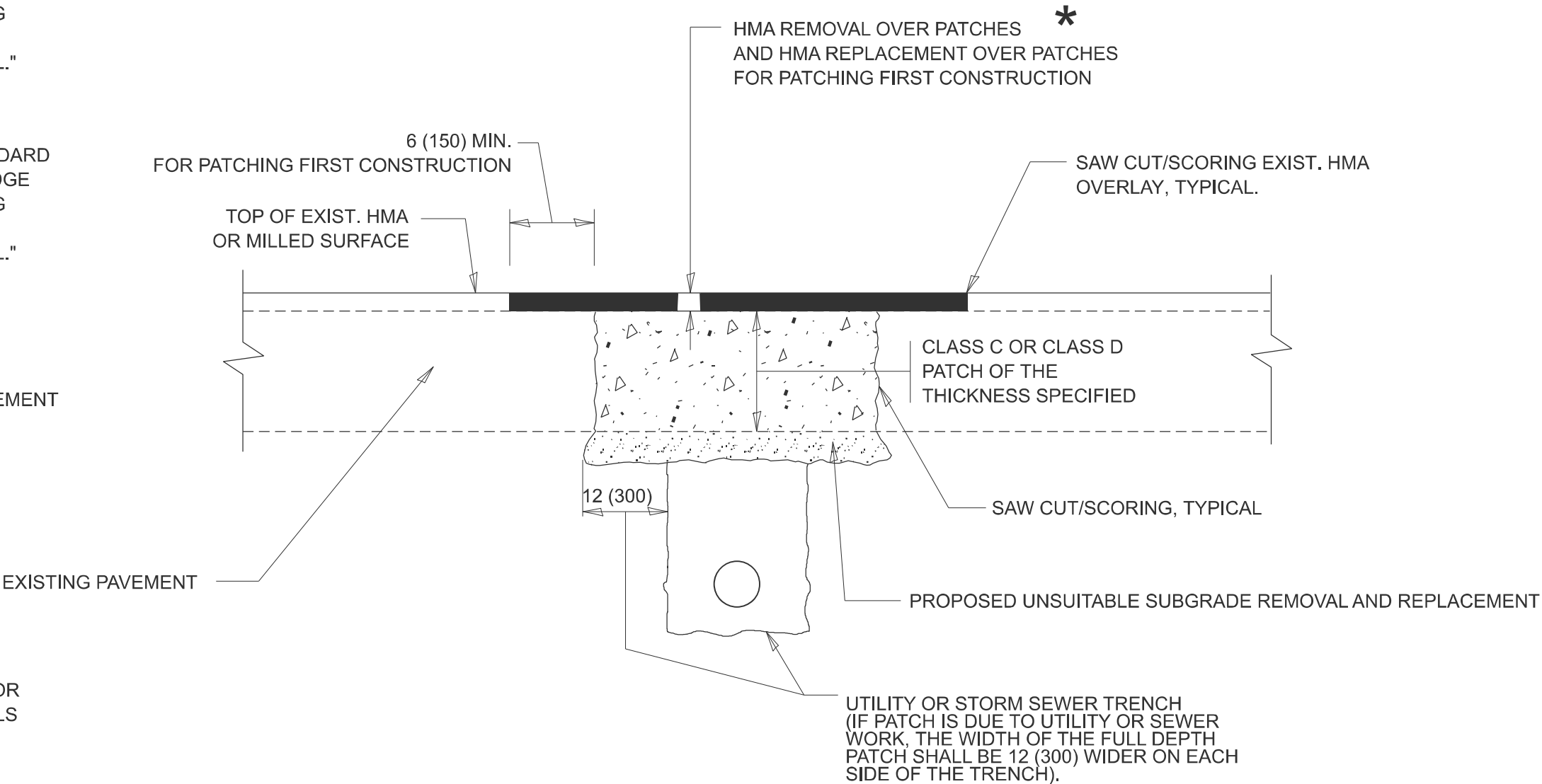
F.A.P RTE.	SECTION	COUNTY	TOTAL SHEETS	SHEET NO.
872	FAP 0872 23 SMART	LAKE	17	9
<b>BD400-01 (BD-01)</b>		CONTRACT NO. 62V39		
ILLINOIS		FED. AID PROJECT		

METHOD OF MEASUREMENT

REFER TO SECTION 442 OF THE STANDARD SPECIFICATIONS FOR ROAD AND BRIDGE CONSTRUCTION AND THE RECURRING SPECIAL PROVISION "PATCHING WITH HOT-MIX ASPHALT OVERLAY REMOVAL."

BASIS OF PAYMENT

- 1. REFER TO SECTION 442 OF THE STANDARD SPECIFICATIONS FOR ROAD AND BRIDGE CONSTRUCTION AND THE RECURRING SPECIAL PROVISION "PATCHING WITH HOT-MIX ASPHALT OVERLAY REMOVAL."
- 2. SAW CUT/SCORING OF EXISTING HMA OVERLAY IS INCLUDED IN THE COST OF PAVEMENT PATCHING.
- 3. SAW CUT/SCORING OF EXISTING PAVEMENT IS INCLUDED IN THE COST OF PAVEMENT PATCHING.



\* SEE TYPICAL SECTIONS FOR THICKNESS AND MATERIALS

SEQUENCE OF CONSTRUCTION (PATCHING FIRST)

- 1. REMOVE THE EXISTING HMA MATERIAL OVER THE AREA TO BE PATCHED.
- 2. REMOVE AND REPLACE WITH CLASS C OR D PATCH.
- 3. REPLACE HMA MATERIAL OVER THE AREA TO BE PATCHED.

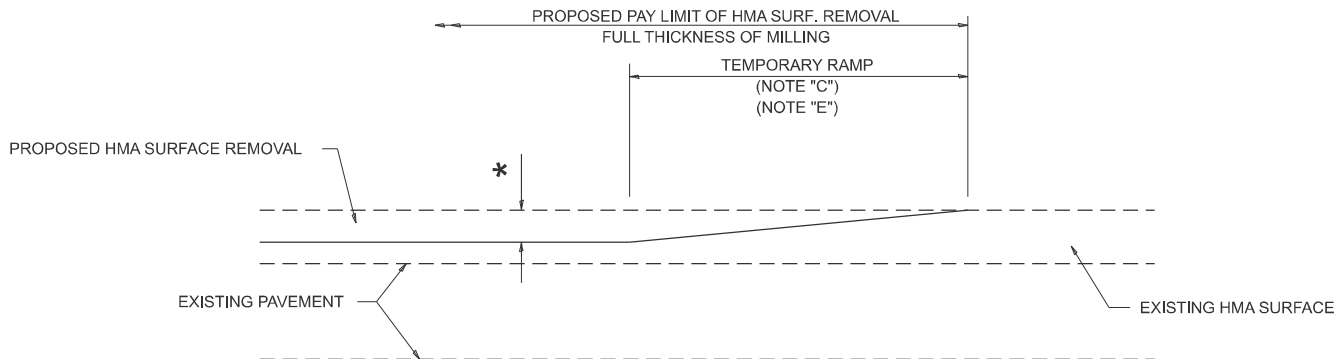
SEQUENCE OF CONSTRUCTION (MILLING FIRST)

- 1. MILL HMA FIRST IF THERE IS AT LEAST 4 1/2 INCHES OR MORE OF HMA MATERIAL ON TOP OF THE EXISTING PAVEMENT OR IF THE PAVEMENT IS FULL DEPTH HMA. A MINIMUM OF 2 INCHES OF HMA MATERIAL SHALL BE IN PLACE AFTER MILLING.
- 2. REMOVE AND REPLACE WITH FULL DEPTH CLASS D PATCHES TO TOP OF MILLED SURFACE.

ALL DIMENSIONS ARE IN INCHES (MILLIMETERS) UNLESS OTHERWISE SHOWN.

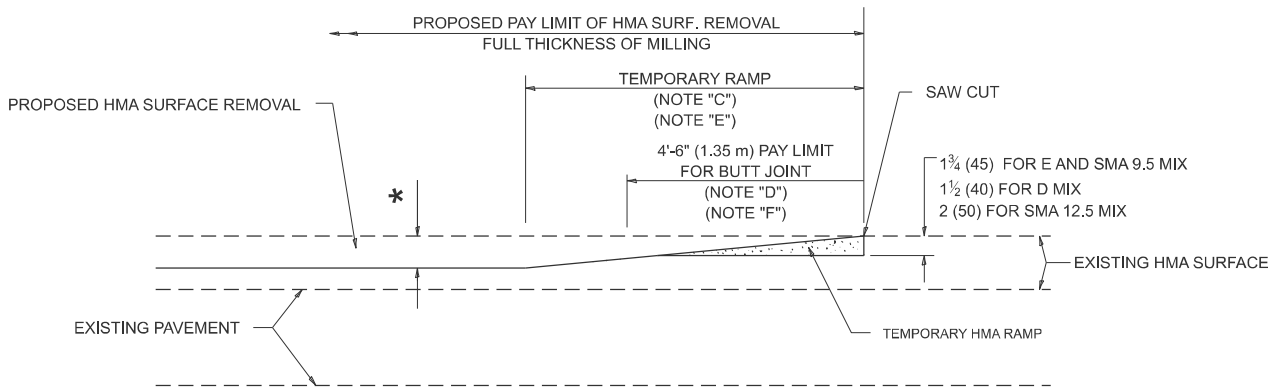
MODEL: BD-22 (Sheet)  
FILE NAME: c:\pav\_work\pav\tdot\roth\pjd\1028534\101724-shd-DistSids.dgn

	USER NAME   = Jacob.Roth	DESIGNED   -   R. SHAH	REVISED   -   R. BORO 01-01-07	STATE OF ILLINOIS DEPARTMENT OF TRANSPORTATION	PAVEMENT PATCHING FOR HMA SURFACED PAVEMENT					F.A.P RTE.	SECTION	COUNTY	TOTAL SHEETS	SHEET NO.
		DRAWN       -	REVISED   -   R. BORO 09-04-07							872	FAP 0872 23 SMART	LAKE	17	10
		CHECKED   -	REVISED   -   K. ENG 10-27-08							BD400-04 (BD-22)				
	PLOT DATE   = 3/14/2025	DATE       -   10-25-94	REVISED   -   K. SMITH 11-18-22		ILLINOIS					FED. AID PROJECT				
					SCALE: NONE	SHEET   1	OF   1	SHEETS	STA.	TO STA.				



**MILLED TEMPORARY RAMP**  
(FOR BUTT JOINT AND HMA TAPER SEE DETAIL BELOW)

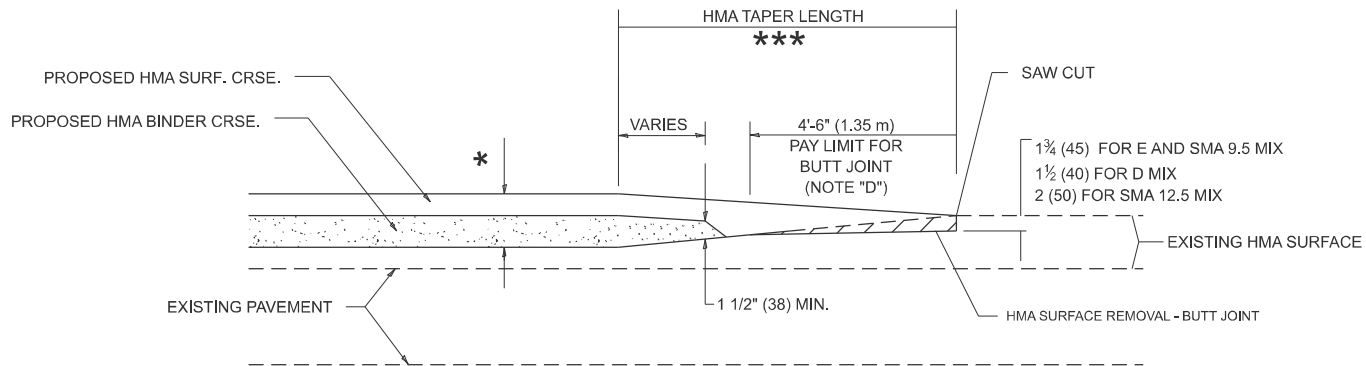
**OPTION 1**



**HMA CONSTRUCTED TEMPORARY RAMP**  
(FOR BUTT JOINT AND HMA TAPER SEE DETAIL BELOW)

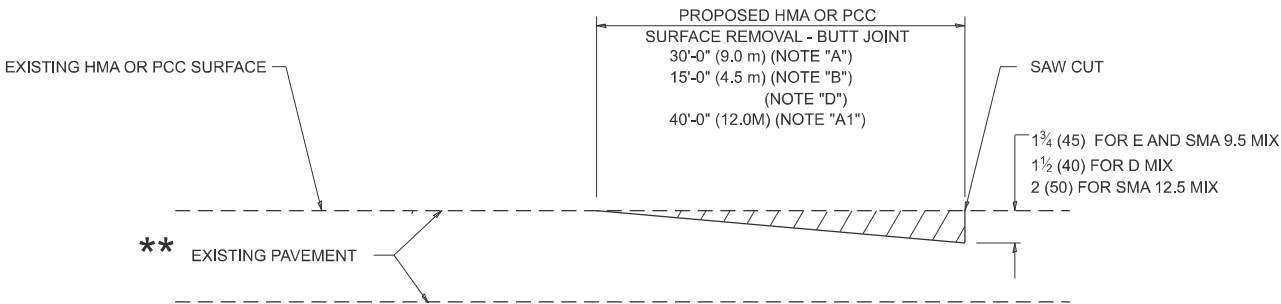
**OPTION 2**

**TYPICAL TEMPORARY RAMP**

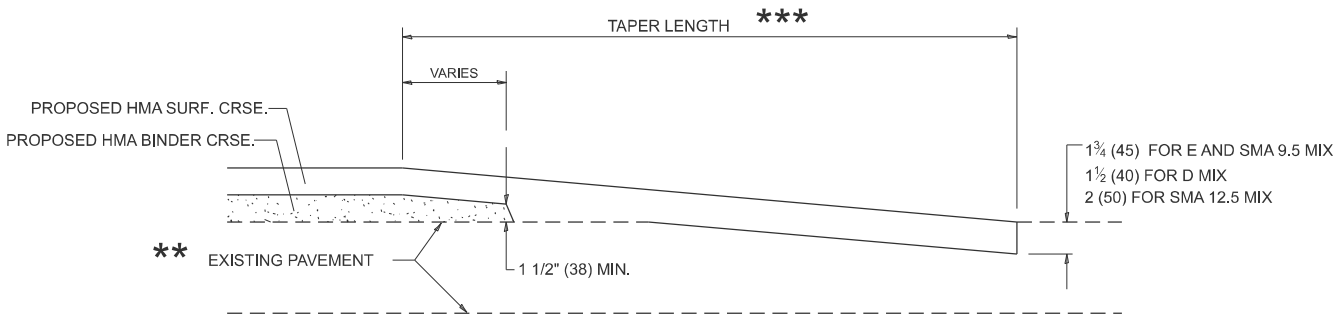


**BUTT JOINT AND  
HMA TAPER**

**TYPICAL BUTT JOINT AND HMA TAPER  
FOR MILLING AND RESURFACING**



**BUTT JOINT DETAIL**



**HMA TAPER DETAIL**

**TYPICAL BUTT JOINT AND HMA TAPER  
FOR RESURFACING ONLY**

**\*\*** PC CONCRETE, HMA OR HMA RESURFACED PAVEMENT.

**GENERAL NOTES**

- A. MAINLINE ARTERIAL ROADWAYS AND MAJOR SIDE ROADS.
- A1. INTERSTATES
- B. MINOR SIDE ROADS.
- C. THE TEMP. RAMP SHALL BE CONSTRUCTED IMMEDIATELY UPON REMOVAL OF THE EXISTING HMA SURFACE.
- D. THE BUTT JOINT SHALL BE CONSTRUCTED IMMEDIATELY PRIOR TO PLACING THE PROPOSED HMA COURSES.
- E. TAPER THE TEMP. RAMP AT A RATE OF 3' - 4" (1.02m) PER 1 INCH (25 mm) OF MILLING THICKNESS.  
**\*** SEE TYPICAL SECTIONS FOR MILLING THICKNESS.
- F. SEE ARTICLE 406.08 AND 406.14 OF THE STANDARD SPECIFICATIONS FOR "HMA AND/OR PCC SURFACE REMOVAL, BUTT JOINT".  
**\*\*\***  
20'-0" (6.1 m) PER 1 (25) RESURFACING (NOTE "A")  
10'-0" (3.0 m) PER 1 (25) RESURFACING (NOTE "B")

**BASIS OF PAYMENT**

- 1. THE BUTT JOINT WILL BE PAID FOR AT THE CONTRACT UNIT PRICE PER SQUARE YARD (SQUARE METER) FOR "HOT-MIX ASPHALT SURFACE REMOVAL - BUTT JOINT" OR FOR "PORTLAND CEMENT CONCRETE SURFACE REMOVAL- BUTT JOINT".
- 2. THE TEMPORARY RAMP AND SAW CUT SHALL BE INCLUDED IN THE UNIT COST FOR HMA OR PCC SURFACE REMOVAL-BUTT JOINT.

ALL DIMENSIONS ARE IN INCHES (MILLIMETERS) UNLESS OTHERWISE SHOWN.

MODEL: BD-32 [Sheet]  
FILE NAME: c:\pav\_work\pav\road\road\pjd\1028534\101724-shd-DistStd.dgn

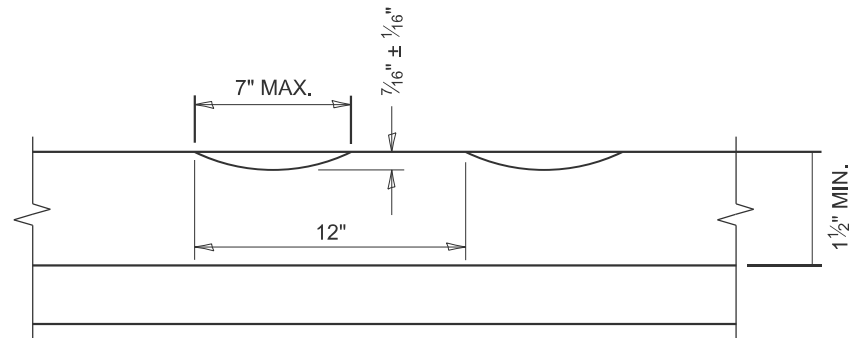
USER NAME = Jacob,Roth	DESIGNED - M. DE YONG	REVISED - A. ABBAS 03-21-97
	DRAWN - M. GOMEZ 04-06-01	REVISED - R. BORO 01-01-07
	CHECKED -	REVISED - K. SMITH 11-18-22
PLOT DATE = 3/14/2025	DATE - 06-13-90	

STATE OF ILLINOIS  
DEPARTMENT OF TRANSPORTATION

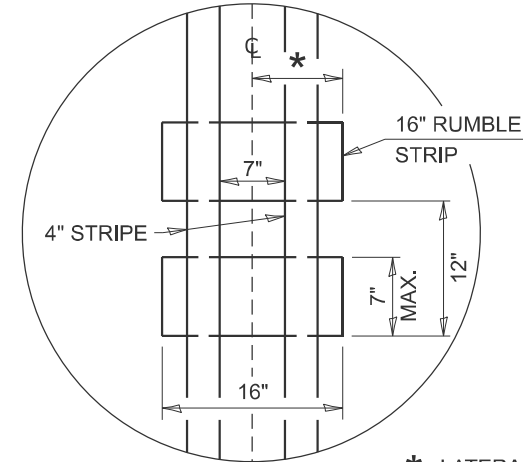
BUTT JOINT AND  
HMA TAPER DETAILS

SCALE: NONE SHEET 1 OF 1 SHEETS STA. TO STA.

F.A.P RTE.	SECTION	COUNTY	TOTAL SHEETS	SHEET NO.
872	FAP 0872 23 SMART	LAKE	17	11
BD400-05 BD-32		CONTRACT NO. 62V39		
		ILLINOIS FED. AID PROJECT		



**SECTION A-A**



\* LATERAL DEVIATION SHALL NOT EXCEED ONE INCH IN 100 FEET.

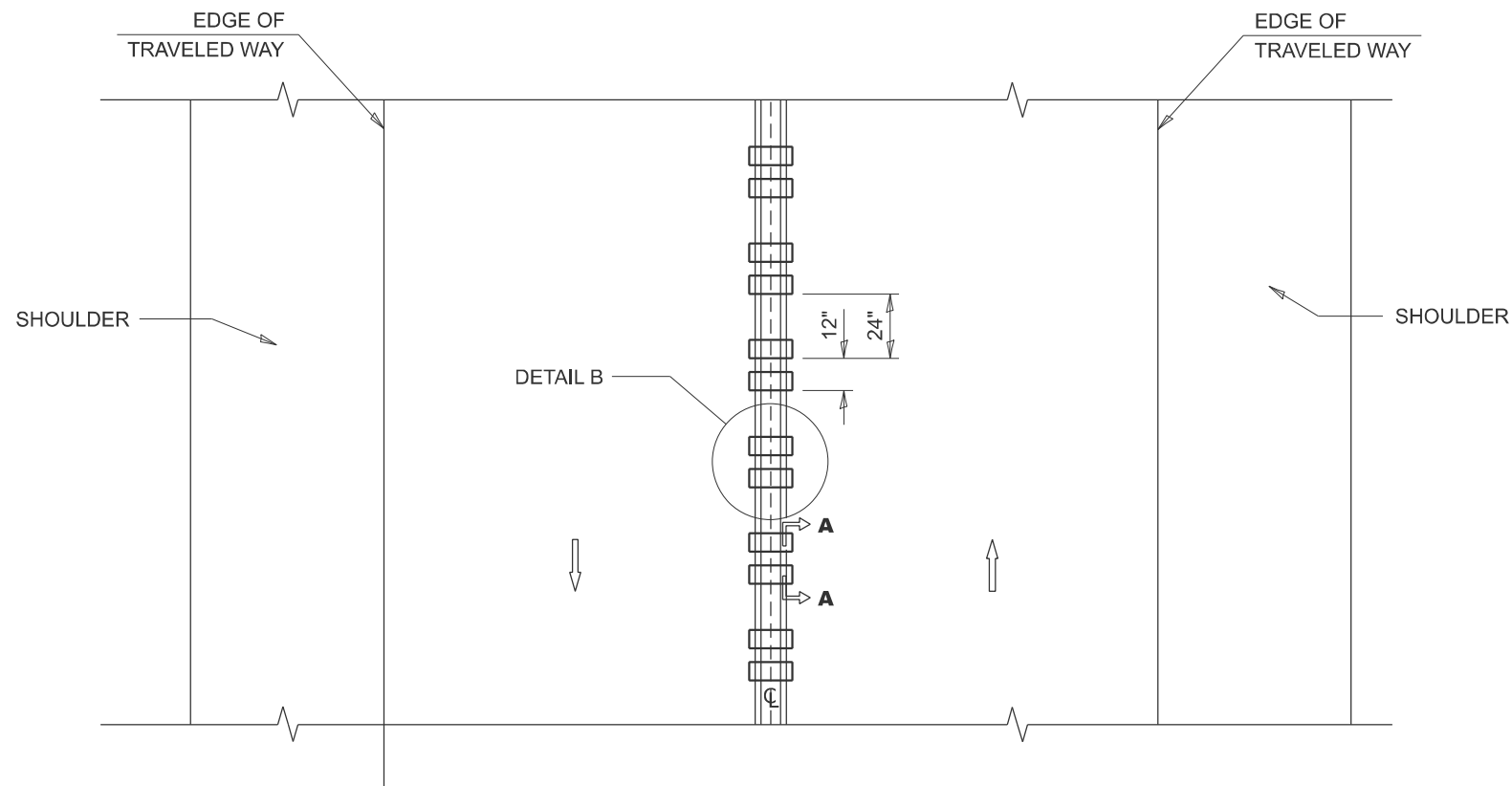
**DETAIL B**

**GENERAL NOTES**

- CENTERLINE RUMBLE STRIPS SHALL BE CONSTRUCTED ACCORDING TO SECTION 642 ALONG THE CENTERLINE OF PAVEMENT.
- SEE STANDARD 780001 FOR OTHER STRIPING LAYOUTS.
- RUMBLE STRIPS SHALL NOT BE PLACED ON BRIDGES.
- ALL RUMBLE STRIPS SHALL BE MILLED.
- CENTERLINE RUMBLE STRIPS SHALL BE CONTINUOUS THROUGH CONNECTIONS OF SIDEROADS WITH NO LEFT TURN LANES.
- DISCONTINUE CENTERLINE RUMBLE STRIPS THROUGH THE LIMITS OF ALL LEFT TURN LANES, INCLUDING ANY LANE TAPER SECTIONS.
- AFTER RUMBLE STRIPS ARE INSTALLED, THE PAVEMENT SURFACE SHALL BE SWEEPED CLEAN PRIOR TO THE PLACEMENT OF THE NEW PAVEMENT MARKINGS.
- WHERE USED, ADJUST SPACING OF RAISED REFLECTIVE PAVEMENT MARKERS TO FALL IN WIDER GAP BETWEEN RUMBLE STRIPS.

**BASIS OF PAYMENT**

- THIS WORK WILL BE PAID FOR AT THE CONTRACT UNIT PRICE PER FOOT FOR CENTERLINE-RUMBLE STRIP OF THE WIDTH SPECIFIED.
- HOT-SPRAY THERMOPLASTIC PAVEMENT MARKING WILL BE USED OVER THE RUMBLE STRIPS, AND WILL BE PAID FOR SEPARATELY.



**TWO-WAY ROAD**

STATE OF ILLINOIS  
DEPARTMENT OF TRANSPORTATION

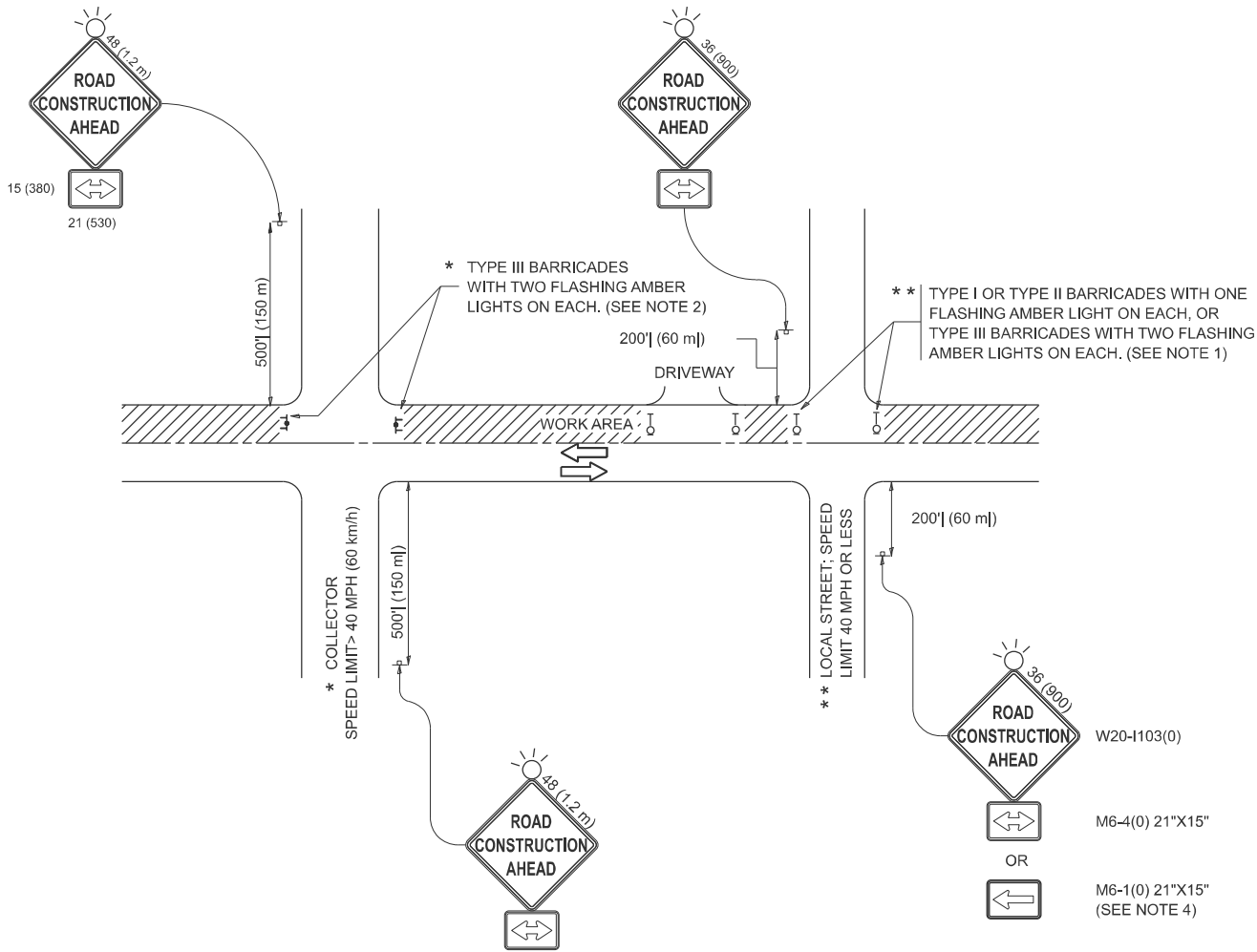
RUMBLE STRIPS FOR CENTERLINE, NON-FREEWAY

SCALE: NONE SHEET 1 OF 1 SHEETS STA. TO STA.

F.A.P RTE.	SECTION	COUNTY	TOTAL SHEETS	SHEET NO.
872	FAP 0872 23 SMART	LAKE	17	12
BD 55		CONTRACT NO. 62V39		
ILLINOIS		FED. AID PROJECT		

USER NAME = Jacob.Roth	DESIGNED - R. BORO	REVISED - K. SMITH 11-18-22
	DRAWN -	REVISED -
	CHECKED -	REVISED -
PLOT DATE = 3/14/2025	DATE - 08-06-2012	REVISED -

MODEL: TC-10 (Sheet)  
FILE NAME: c:\pwwork\pwwork\roth\pjd\1028534\101724-shd-DistShts.dgn

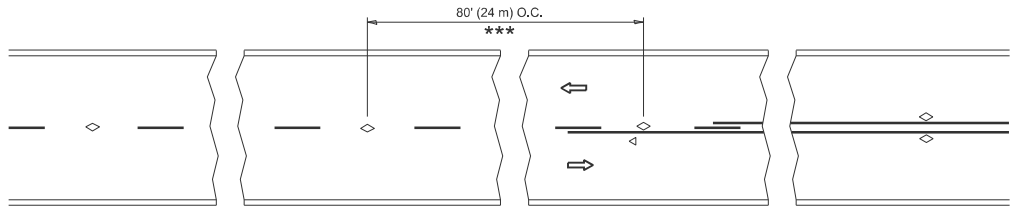


NOTES:

- SIDE ROAD WITH A SPEED LIMIT OF 40 MPH (60 km/h) OR LESS AS SHOWN ON THE DRAWING AND AS DIRECTED BY THE ENGINEER:
  - ONE "ROAD CONSTRUCTION AHEAD" SIGN 36 x 36 (900x900) WITH A FLASHER MOUNTED ON IT APPROXIMATELY 200' (60 m) IN ADVANCE OF THE MAIN ROUTE.
  - THE CLOSED PORTION OF THE MAIN ROUTE SHALL BE PROTECTED BY BLOCKING WITH TYPE I, TYPE II OR TYPE III BARRICADES, 1/3 OF THE CROSS SECTION OF THE CLOSED PORTION.
- SIDE ROAD WITH A SPEED LIMIT GREATER THAN 40 MPH (60 km/h) AS SHOWN ON THE DRAWING AND AS DIRECTED BY THE ENGINEER:
  - ONE "ROAD CONSTRUCTION AHEAD" SIGN 48 x 48 (1.2 m x 1.2 m) WITH A FLASHER MOUNTED ON IT APPROXIMATELY 500' (150 m) IN ADVANCE OF THE MAIN ROUTE.
  - THE CLOSED PORTION OF THE MAIN ROUTE SHALL BE PROTECTED BY BLOCKING WITH TYPE III BARRICADES, 1/2 OF THE CROSS SECTION OF THE CLOSED PORTION.
- CONES MAY BE SUBSTITUTED FOR BARRICADES OR DRUMS AT HALF THE SPACING DURING DAY OPERATIONS. CONES SHALL BE A MINIMUM OF 28 (710) IN HEIGHT.
- WHEN THE SIDE ROAD LIES BETWEEN THE BEGINNING OF THE MAINLINE SIGNING AND THE WORK ZONE, A SINGLE HEADED ARROW (M6-1) SHALL BE USED IN LIEU OF THE DOUBLE HEADED ARROW (M6-4).
- WHEN WORK IS BEING PERFORMED ON A SIDE ROAD OR DRIVEWAY, FOLLOW THE APPLICABLE STANDARD(S). THE DIRECTIONAL ARROW (M6-1 OR M6-4) SHALL BE COVERED OR REMOVED WHEN NO LONGER CONSISTENT WITH THE TRAFFIC CONTROL SET-UP.
- ADVANCE WARNING SIGNS ARE TO BE OMITTED ON DRIVEWAYS UNLESS OTHERWISE SPECIFIED IN THE PLANS OR BY THE ENGINEER.
- THE TRAFFIC CONTROL AND PROTECTION FOR SIDE ROADS, INTERSECTIONS, AND DRIVEWAYS SHALL BE INCLUDED IN THE COST OF SPECIFIED TRAFFIC CONTROL STANDARDS OR ITEMS.

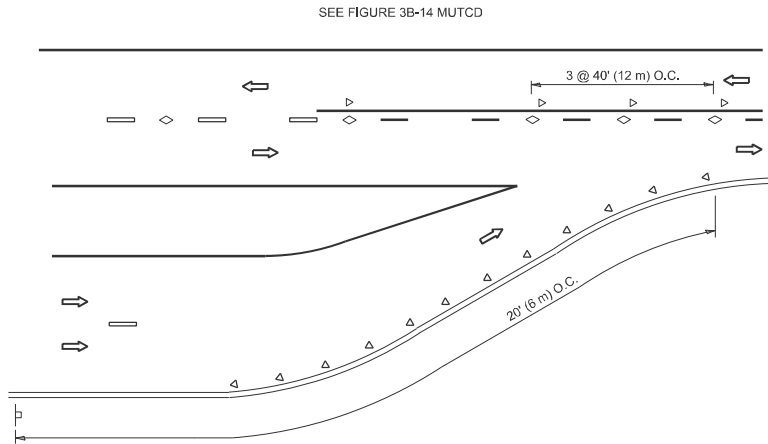
All dimensions are in inches (millimeters) unless otherwise shown.

	USER NAME   = Jacob,Roth	DESIGNED   -   L.H.A.	REVISED   - T. RAMMACHER 01-06-00	STATE OF ILLINOIS DEPARTMENT OF TRANSPORTATION	TRAFFIC CONTROL AND PROTECTION FOR SIDE ROADS, INTERSECTIONS, AND DRIVEWAYS				F.A.P RTE.	SECTION	COUNTY	TOTAL SHEETS	SHEET NO.			
		DRAWN       -	REVISED   - A. SCHUETZE 07-01-13						872	FAP 0872 23 SMART	LAKE	17	13			
		CHECKED   -	REVISED   - A. SCHUETZE 09-15-06						TC-10					CONTRACT NO. 62V39		
	PLOT DATE   = 3/14/2025	DATE       -   06-89	REVISED   - D. SENDERAK 05-03-24						ILLINOIS FED. AID PROJECT							
	SCALE:		SHEET       OF       SHEETS						STA.		TO STA.					

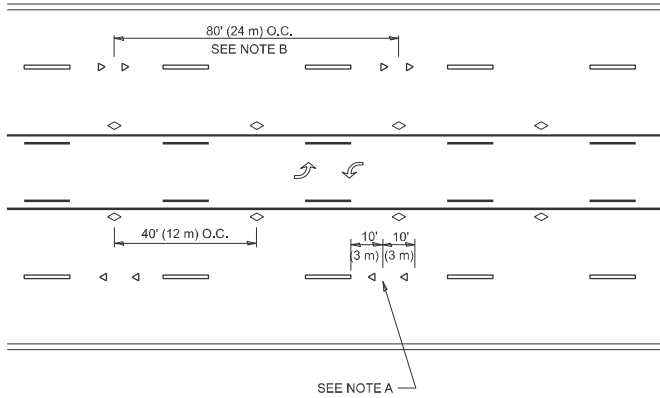


\*\*\* REDUCE TO 40' (12 m) O.C. ON CURVES WITH POSTED OR ADVISORY SPEED 45 M.P.H. (70 km/h) OR LESS.

## TWO-LANE/TWO-WAY

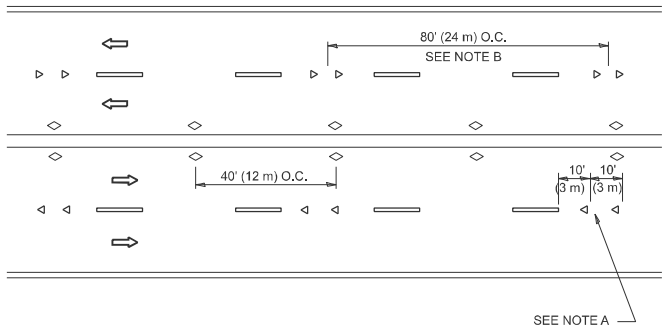


## LANE REDUCTION TRANSITION



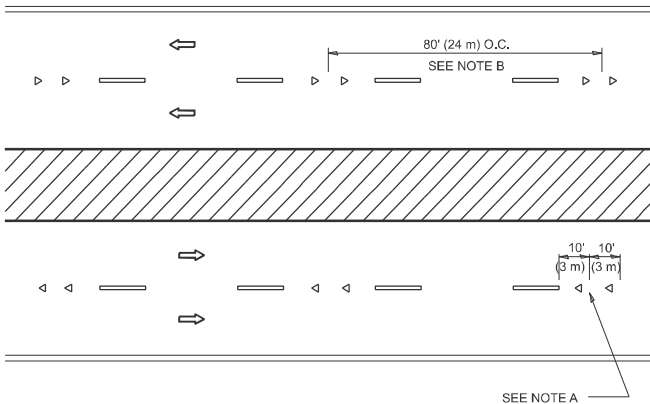
SEE NOTE A

## TWO-WAY LEFT TURN



SEE NOTE A

## MULTI-LANE/UNDIVIDED



SEE NOTE A

## MULTI-LANE/DIVIDED

## GENERAL NOTES

- MARKERS USED WITH DASHED LINES SHALL BE CENTERED IN THE GAP BETWEEN SEGMENTS.
- MARKERS USED ADJACENT TO SOLID LINES SHALL BE OFFSET 2 TO 3 (50 TO 75) TOWARD TRAFFIC AS SHOWN.
- MARKERS THROUGH TANGENTS LESS THAN 500' (150 m) IN LENGTH BETWEEN CURVES SHALL BE INSTALLED AT THE LESSER OF THE TWO CURVE SPACINGS.
- MARKERS ARE TO BE USED ADJACENT TO BOTH SOLID WHITE LINES IN DUAL LEFT TURN LANES

## SYMBOLS

- YELLOW STRIPE
- WHITE STRIPE
- ONE-WAY AMBER MARKER
- ONE-WAY CRYSTAL MARKER (W/O)
- TWO-WAY AMBER MARKER

## LANE MARKER NOTES

- USE DOUBLE LANE LINE MARKERS SPACED AS SHOWN.
- REDUCE TO 40' (12 m) O.C. ON CURVES WHERE ADVISORY SPEEDS ARE 10 M.P.H (20 km/h) LOWER THAN POSTED SPEEDS.

## DESIGN NOTES

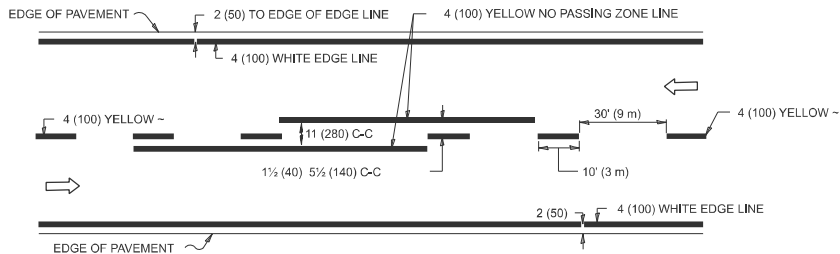
- DOUBLE LANE LINE MARKERS SHALL BE USED UNLESS SPECIFIED OTHERWISE.
- EXCEPT AS SHOWN ON THE LANE REDUCTION TRANSITION AND FREEWAY EXIT RAMP DETAIL, MARKERS ARE NOT TO BE SPECIFIED ON RIGHT EDGE LINES.
- THE EXACT MARKER LIMITS, SPACING, AND COLOR SHALL BE INCLUDED IN THE PLANS WHEN STANDARD SPECIFICATIONS ARE NOT BEING USED.
- MARKERS SHOULD NOT BE USED ALONGSIDE CURBS EXCEPT FOR EXTREMELY SHORT SECTIONS OF CURBS WHERE NOT MORE THAN TWO MARKERS WOULD BE INVOLVED.

All dimensions are in inches (millimeters) unless otherwise shown.

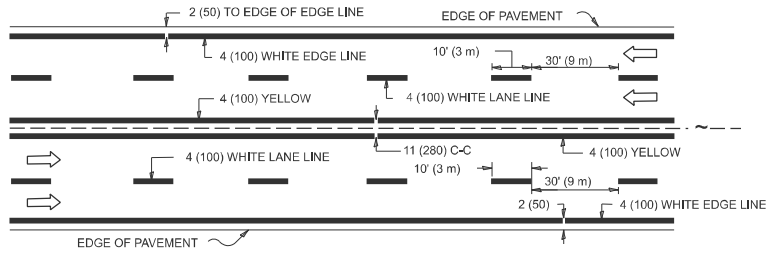
MODEL: TC-11 [Sheet]  
FILE NAME: c:\p\work\p\work\proj\p\1028534\101724-sh-DisStds.dgn

	USER NAME   = Jacob,Roth	DESIGNED   -	REVISED   - T. RAMMACHER 03-12-99	STATE OF ILLINOIS DEPARTMENT OF TRANSPORTATION	TYPICAL APPLICATIONS RAISED REFLECTIVE PAVEMENT MARKERS (SNOW-PLOW RESISTANT)				F.A.P RTE.	SECTION		COUNTY	TOTAL SHEETS	SHEET NO.
		DRAWN    -	REVISED   - T. RAMMACHER 01-06-00						872	FAP 0872 23 SMART		LAKE	17	14
		CHECKED   -	REVISED   - C. JUCIUS 09-09-09						TC-11		CONTRACT NO. 62V39			
	PLOT DATE   = 3/14/2025	DATE       -	REVISED   - C. JUCIUS 07-01-13		SCALE: NONE		SHEET   1	OF   1	SHEETS	STA.	TO STA.			
							ILLINOIS   FED. AID PROJECT							

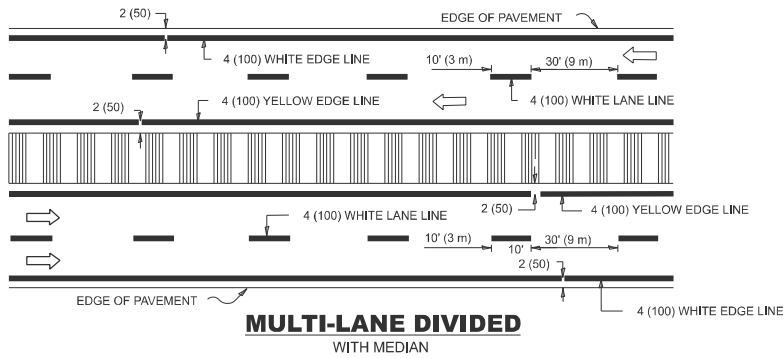
MODEL: TC-13 (Sheet)  
FILE NAME: c:\pawork\pawork\proj\pawork\1028534\101724-sh-TYP-PAV-MARKS.dgn



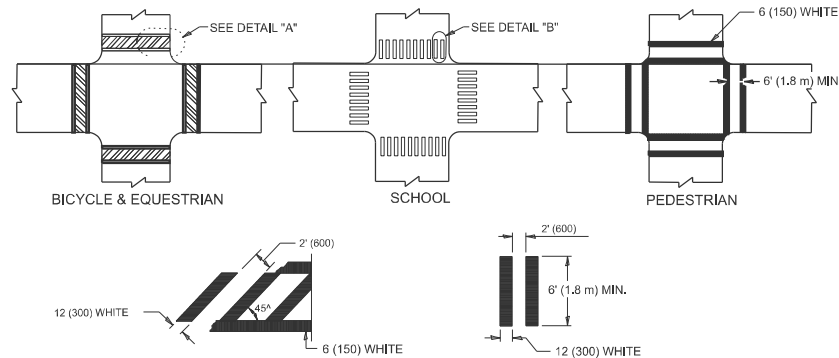
## 2-LANE ROADWAY



## MULTI-LANE UNDIVIDED



## TYPICAL LANE AND EDGE LINE MARKING

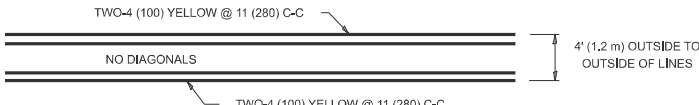


### DETAIL "A"

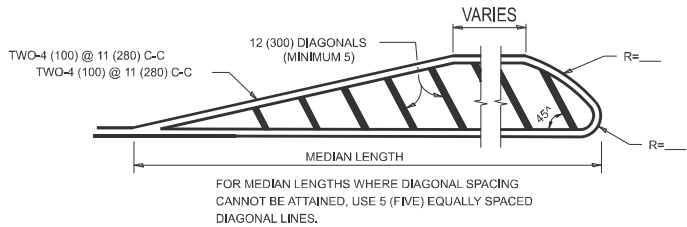
### DETAIL "B"

## TYPICAL CROSSWALK MARKING

\* MARKINGS SHALL BE INSTALLED PARALLEL TO THE CENTERLINE OF THE ROAD WHICH IT CROSSES

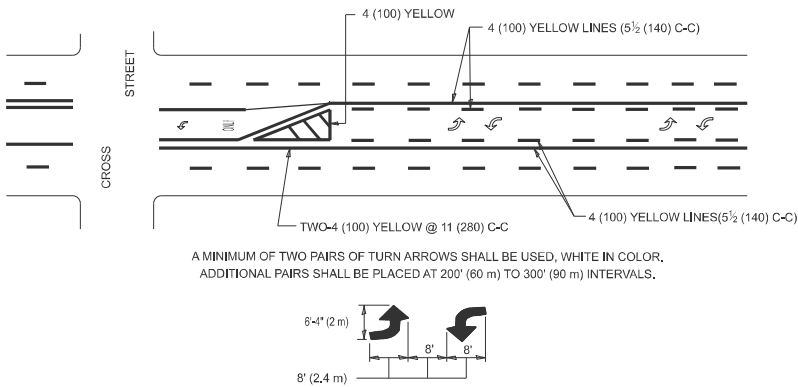


## 4' (1.2 m) WIDE MEDIANS ONLY

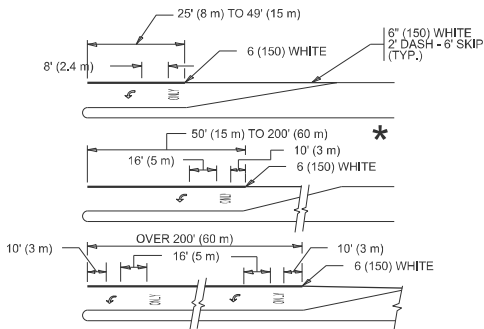


DIAGONAL LINE SPACING: 50' (15 m) C-C (LESS THAN 30MPH (50 km/h))  
75' (25 m) C-C 30MPH (50 km/h) TO 45MPH (70 km/h)  
150' (45 m) C-C (MORE THAN 45MPH (70 km/h))

## MEDIANS OVER 4' (1.2 m) WIDE



## MEDIAN WITH TWO-WAY LEFT TURN LANE TYPICAL PAINTED MEDIAN MARKING

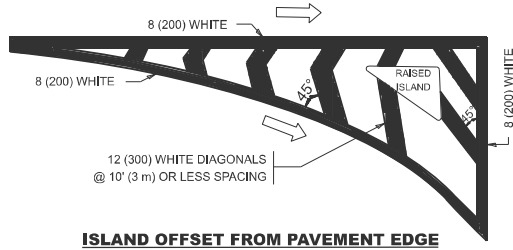


FULL SIZE LETTERS 8' (2.4 m) AND ARROWS SHALL BE USED.  
AREA = 15.6 SQ. FT. (1.5 m<sup>2</sup>) ONLY AREA = 20.8 SQ. FT. (1.9 m<sup>2</sup>)

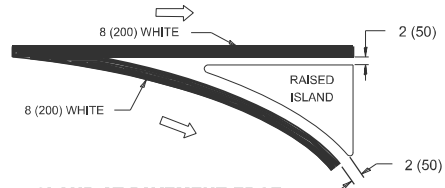
\* TURN LANES IN EXCESS OF 400' (120 m) IN LENGTH MAY HAVE AN ADDITIONAL SET OF ARROW - "ONLY" INSTALLED MIDWAY BETWEEN THE OTHER TWO SETS OF ARROW - "ONLY".

## TYPICAL LEFT (OR RIGHT) TURN LANE

## TYPICAL TURN LANE MARKING

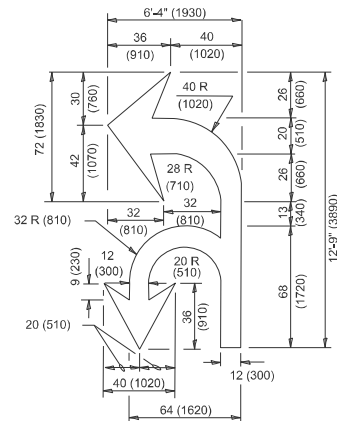


### ISLAND OFFSET FROM PAVEMENT EDGE

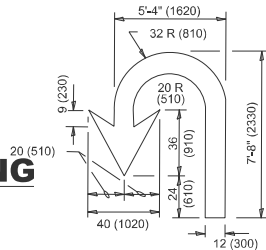


### ISLAND AT PAVEMENT EDGE

## TYPICAL ISLAND MARKING



## COMBINATION LEFT AND U-TURN



## U-TURN

## LANE REDUCTION TRANSITION

\* LANE REDUCTION ARROWS REQUIRED AT SPEEDS OF 45 MPH OR GREATER OR WHEN SPECIFIED IN PLANS.

TYPE OF MARKING	WIDTH OF LINE	PATTERN	COLOR	SPACING / REMARKS
CENTERLINE ON 2 LANE PAVEMENT	4 (100)	SKIP-DASH	YELLOW	10' (3 m) LINE WITH 30' (9 m) SPACE
CENTERLINE ON MULTI-LANE UNDIVIDED PAVEMENT	2 @ 4 (100)	SOLID	YELLOW	11 (280) C-C
NO PASSING ZONE LINES: FOR ONE DIRECTION FOR BOTH DIRECTIONS	4 (100) 2 @ 4 (100)	SOLID SOLID	YELLOW YELLOW	5 1/2 (140) C-C FROM SKIP-DASH CENTERLINE 11 (280) C-C OMIT SKIP-DASH CENTERLINE BETWEEN
LANE LINES	4 (100) 5 (125) ON FREEWAYS	SKIP-DASH SKIP-DASH	WHITE WHITE	10' (3 m) LINE WITH 30' (9 m) SPACE
DOTTED LINES (EXTENSIONS OF CENTER, LANE OR TURN LANE MARKINGS)	SAME AS LINE BEING EXTENDED	SKIP-DASH	SAME AS LINE BEING EXTENDED	2' (600) LINE WITH 6' (1.8 m) SPACE
EDGE LINES	4 (100)	SOLID	YELLOW-LEFT WHITE-RIGHT	OUTLINE MEDIANS IN YELLOW
TURN LANE MARKINGS	6 (150) LINE: FULL SIZE LETTERS & SYMBOLS (8' (2.4m))	SOLID	WHITE	SEE TYPICAL TURN LANE MARKING DETAIL
TWO WAY LEFT TURN MARKING	2 @ 4 (100) EACH DIRECTION 8' (2.4m) LEFT ARROW	SKIP-DASH AND SOLID IN PAIRS	YELLOW WHITE	10' (3 m) LINE WITH 30' (9 m) SPACE FOR SKIP-DASH: 5 1/2 (140) C-C BETWEEN SOLID LINE AND SKIP-DASH LINE SEE TYPICAL TWO-WAY LEFT TURN MARKING DETAIL
CROSSWALK LINES (PEDESTRIAN) A. DIAGONALS (BIKE & EQUESTRIAN) B. LONGITUDINAL BARS (SCHOOL)	2 @ 6 (150) 12 (300) @ 45° 12 (300) @ 90°	SOLID SOLID SOLID	WHITE WHITE WHITE	NOT LESS THAN 6' (1.8 m) APART 2' (600) APART 2' (600) APART SEE TYPICAL CROSSWALK MARKING DETAILS.
STOP LINES	24 (600)	SOLID	WHITE	PLACE 4' (1.2 m) IN ADVANCE OF AND PARALLEL TO CROSSWALK, IF PRESENT. OTHERWISE, PLACE AT DESIRED STOPPING POINT, PARALLEL TO CROSSROAD CENTERLINE, WHERE POSSIBLE.
PAINTED MEDIANS	2 @ 4 (100) WITH 12 (300) DIAGONALS @ 45° NO DIAGONALS USED FOR 4' (1.2 m) WIDE MEDIANS	SOLID	YELLOW: TWO WAY TRAFFIC WHITE: ONE WAY TRAFFIC	11 (280) C-C FOR THE DOUBLE LINE SEE TYPICAL PAINTED MEDIAN MARKING.
GORE MARKING AND CHANNELIZING LINES	8 (200) WITH 12 (300) DIAGONALS @ 45°	SOLID	WHITE	DIAGONALS: 15' (4.5 m) C-C (LESS THAN 30MPH (50 km/h)) 20' (6 m) C-C 30MPH (50 km/h) TO 45MPH (70 km/h) 30' (9 m) C-C (OVER 45MPH (70 km/h))
RAILROAD CROSSING	24 (600) TRANSVERSE LINES: "RR" IS 6' (1.8 m) LETTERS: 16 (400) LINE FOR "X"	SOLID	WHITE	SEE STATE STANDARD 780001 AREA OF: *R*=3.6 SQ. FT. (0.33 m <sup>2</sup> ) EACH *X*=54.0 SQ. FT. (5.0 m <sup>2</sup> )
SHOULDER DIAGONALS (REQUIRED FOR SHOULDERS ≥ 8')	12 (300) @ 45°	SOLID	WHITE - RIGHT YELLOW - LEFT	50' (15 m) C-C (LESS THAN 30MPH (50 km/h)) 75' (25 m) C-C (30 MPH (50 km/h) TO 45MPH (70 km/h)) 150' (45 m) C-C (OVER 45MPH (70 km/h))
U TURN ARROW	SEE DETAIL	SOLID	WHITE	16.3 SF
2 ARROW COMBINATION LEFT AND U TURN	SEE DETAIL	SOLID	WHITE	30.4 SF

FOR FURTHER DETAILS ON PAVEMENT MARKING REFER TO  
STANDARD SPECIFICATIONS FOR ROAD AND BRIDGE  
CONSTRUCTION AND STATE STANDARD 780001.

All dimensions are in inches (millimeters)  
unless otherwise shown.

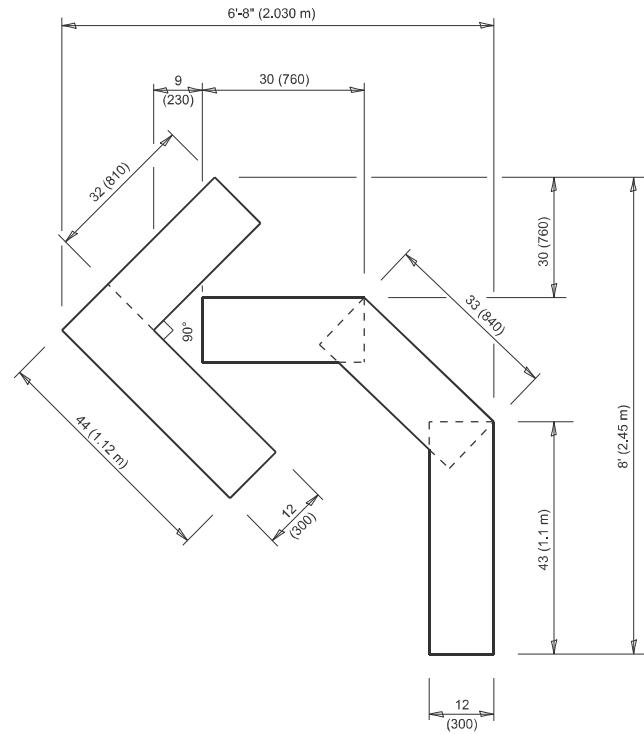
USER NAME = Jacob,Roth	DESIGNED - EVERS	REVISED - C. JUCIUS 09-09-09
	DRAWN -	REVISED - C. JUCIUS 07-01-13
	CHECKED -	REVISED - C. JUCIUS 12-21-15
PLOT DATE = 3/14/2025	DATE - 03-19-90	REVISED - C. JUCIUS 04-12-16

## STATE OF ILLINOIS DEPARTMENT OF TRANSPORTATION

## DISTRICT ONE TYPICAL PAVEMENT MARKINGS

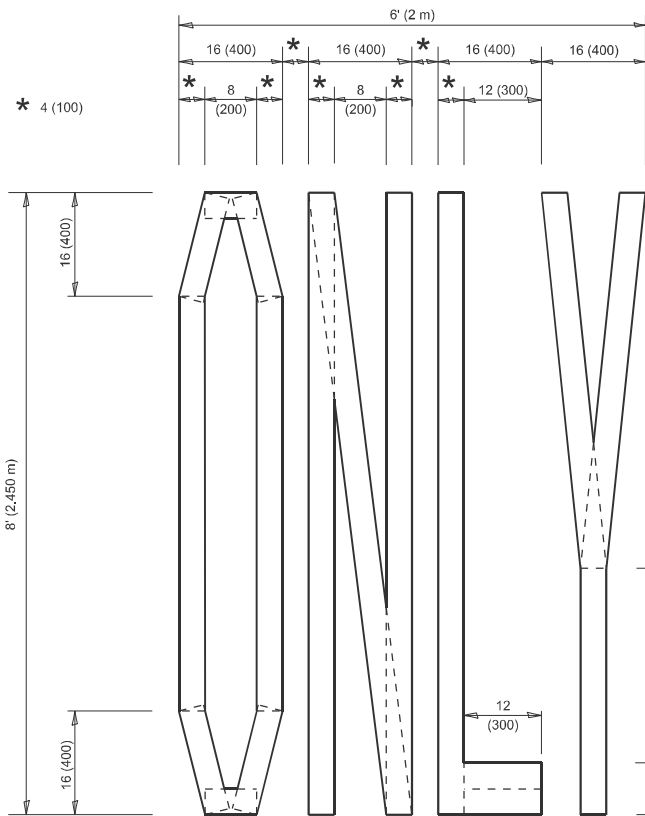
SCALE: NONE SHEET 1 OF 1 SHEETS STA. TO STA.

F.A.P RTE.	SECTION	COUNTY	TOTAL SHEETS	SHEET NO.
872	FAP 0872 23 SMART	LAKE	17	15
TC-13		CONTRACT NO. 62V39		
ILLINOIS		FED. AID PROJECT		



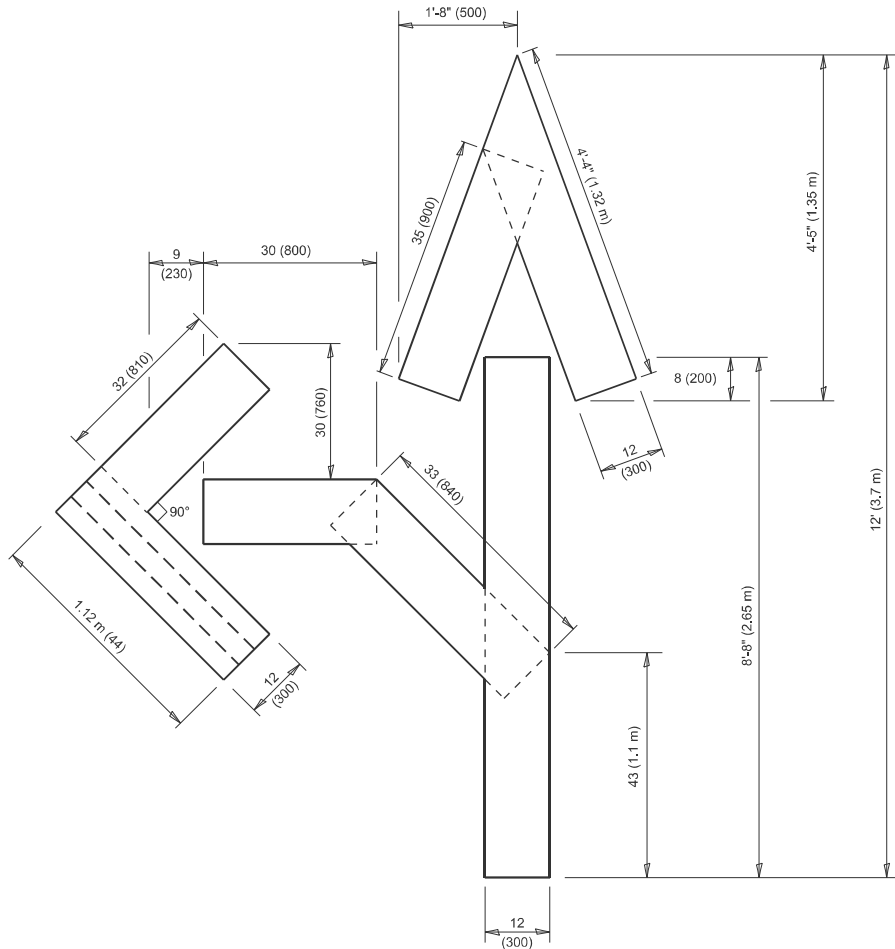
**QUANTITY**

4 (100) LINE = 45.5 ft. (13.9 m)  
15.2 sq. ft. (1.41 sq. m)



**QUANTITY**

4 (100) LINE = 64.1 ft. (19.5 m)  
21.4 sq. ft. (1.99 sq. m)

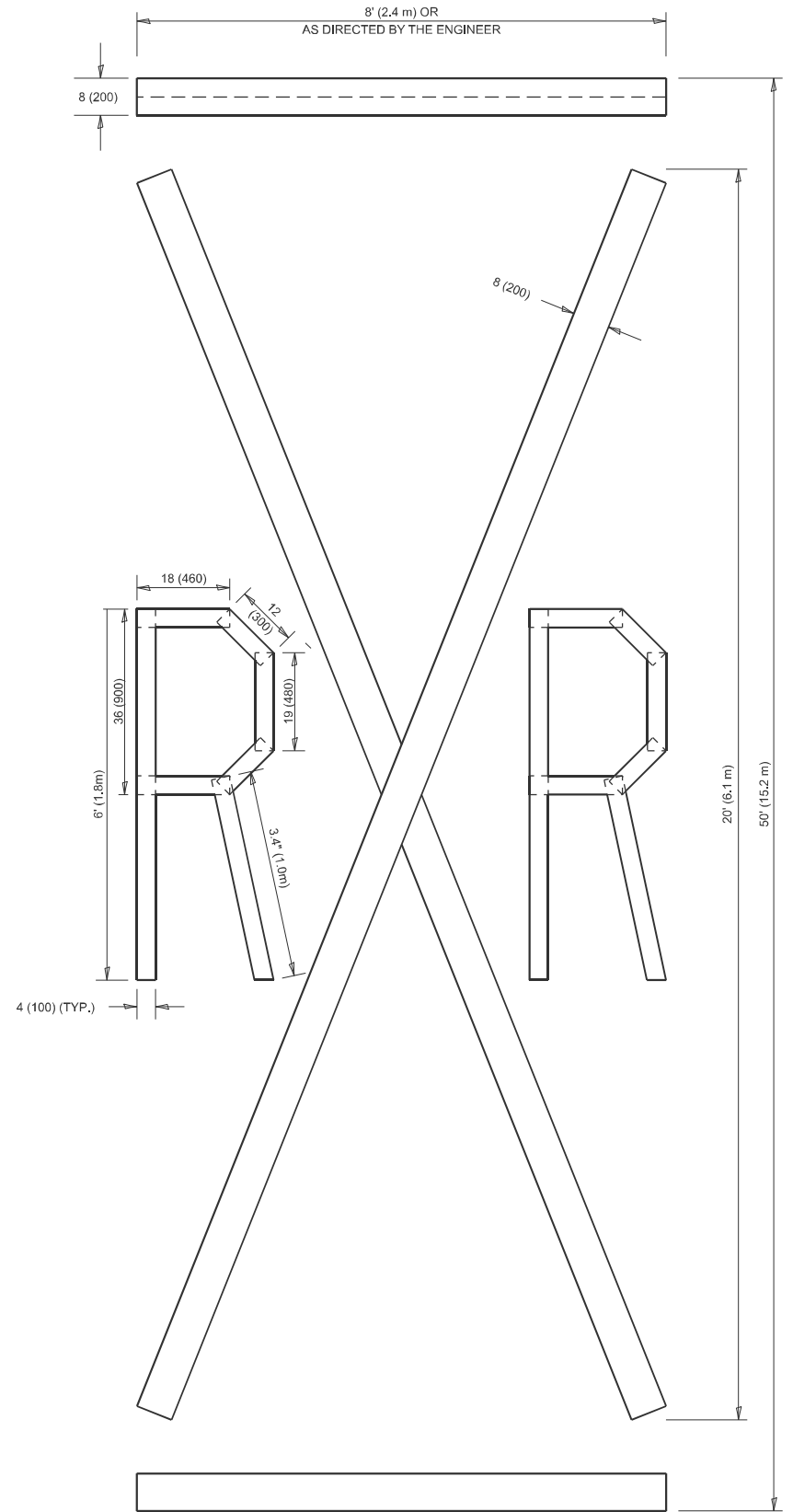


**QUANTITY**

4 (100) LINE = 82.5 ft. (25.1 m)  
27.5 sq. ft. (2.53 sq. m)

**NOTE:**

ALL QUANTITIES OF PLACEMENT ARE REPRESENTED  
IN LINEAR FEET OF 4" LINES TO MATCH THE  
4" TEMPORARY TAPE PAY ITEM AND REPRESENTS  
THE TOTAL QUANTITY OF 4" TAPE REQUIRED.



**QUANTITY**

4 (100) LINE = 225.9 ft. (68.9 m)  
75.3 sq. ft. (6.99 sq. m)

All dimensions are in inches (millimeters)  
unless otherwise shown.

MODEL: TC-16 (Sheet)  
FILE NAME: c:\p\work\proj\proj\proj\1028534\101724-shr-Dwg\Std.dgn

USER NAME	= Jacob,Roth	DESIGNED	-	REVISED	- T. RAMMACHER 03-02-98
		DRAWN	-	REVISED	- E. GOMEZ 08-28-00
		CHECKED	-	REVISED	- E. GOMEZ 08-28-00
PLOT DATE	= 3/14/2025	DATE	- 09-18-94	REVISED	- A. SCHUETZE 09-15-16

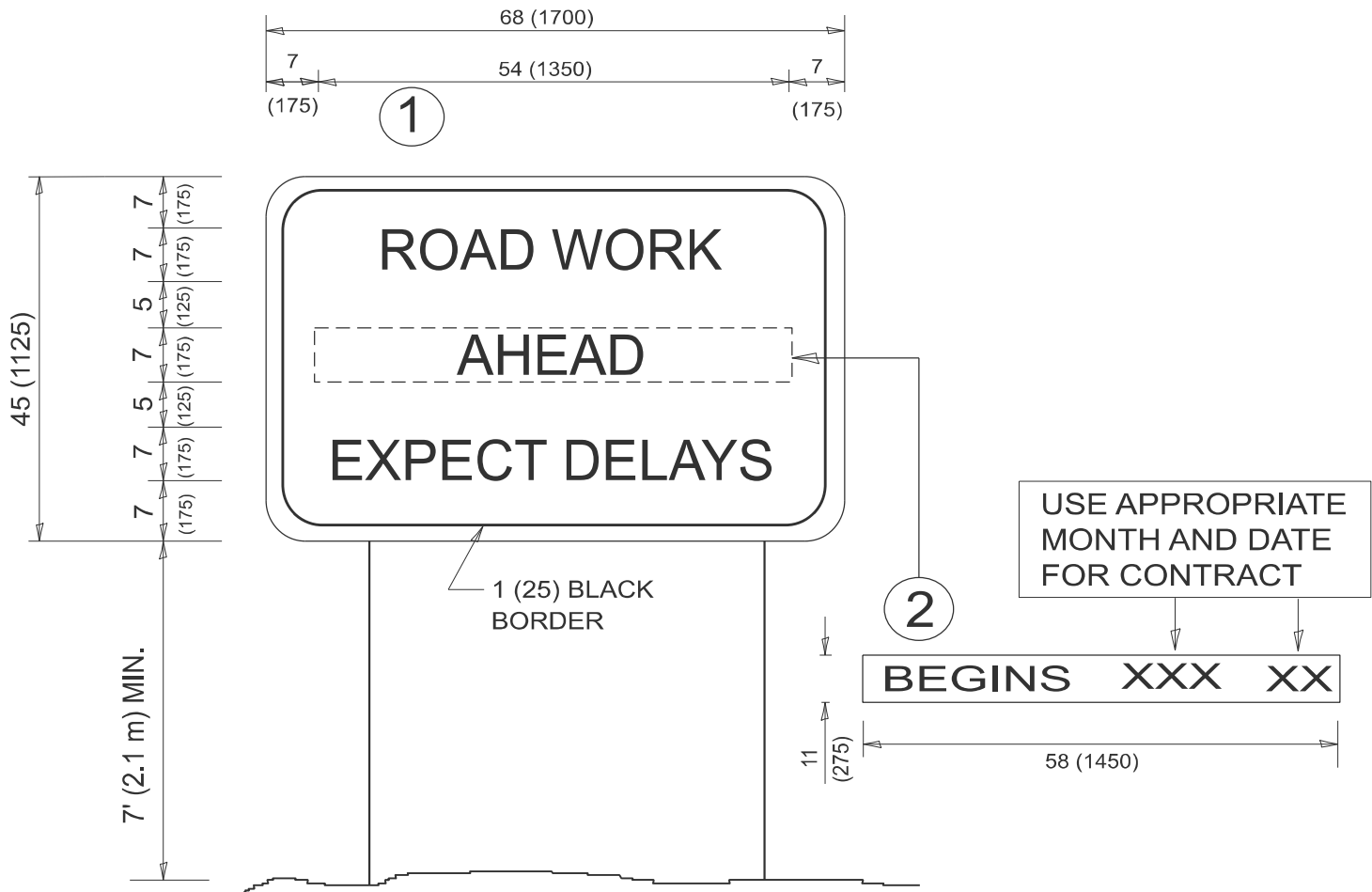
STATE OF ILLINOIS  
DEPARTMENT OF TRANSPORTATION

**SHORT TERM PAVEMENT MARKING LETTERS AND SYMBOLS**

SCALE: NONE SHEET 1 OF 1 SHEETS STA. TO STA.

F.A.P RTE.	SECTION	COUNTY	TOTAL SHEETS	SHEET NO.
872	FAP 0872 23 SMART	LAKE	17	16
TC-16		CONTRACT NO. 62V39		
		ILLINOIS	FED. AID PROJECT	

MODEL: TC-22 [Sheet]  
FILE NAME: c:\p\work\pwork\roth\p\1028534\101724-shd-DistSigs.dgn



NOTES:

1. USE BLACK LETTERING ON ORANGE BACKGROUND.
2. ERECT SIGNS IN ADVANCE OF THE LOCATION FOR THE "ROAD CONSTRUCTION AHEAD" SIGN AT LOCATIONS AS DIRECTED BY THE ENGINEER.
3. ERECT SIGN ① WITH INSTALLED PANEL ② ONE WEEK PRIOR TO THE START OF CONSTRUCTION.
4. REMOVE PANEL ② SOON AFTER THE START OF CONSTRUCTION.
5. SEE SPECIAL PROVISION FOR "TEMPORARY INFORMATION SIGNING" FOR ADDITIONAL INFORMATION.
6. ONE SIGN ASSEMBLY EQUALS 25.70 SQ. FT. (2.3 SQ. M.)
7. SHALL BE PAID FOR AS TEMPORARY INFORMATION SIGNING.

ALL DIMENSIONS ARE IN INCHES (MILLIMETERS)  
UNLESS OTHERWISE SHOWN.

	USER NAME   = Jacob,Roth	DESIGNED   -	REVISED   -   R. MIRS 09-15-97	STATE OF ILLINOIS DEPARTMENT OF TRANSPORTATION	ARTERIAL ROAD INFORMATION SIGN				F.A.P RTE.	SECTION	COUNTY	TOTAL SHEETS	SHEET NO.
		DRAWN       -	REVISED   -   R. MIRS 12-11-97						872	FAP 0872 23 SMART	LAKE	17	17
		CHECKED   -	REVISED   - T. RAMMACHER 02-02-99						TC-22		CONTRACT NO. 62V39		
	PLOT DATE   = 3/14/2025	DATE        -	REVISED   -   C. JUCIUS 01-31-07		ILLINOIS FED. AID PROJECT								
					SCALE: NONE	SHEET   1	OF   1	SHEETS	STA.	TO STA.			