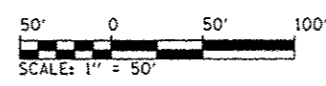
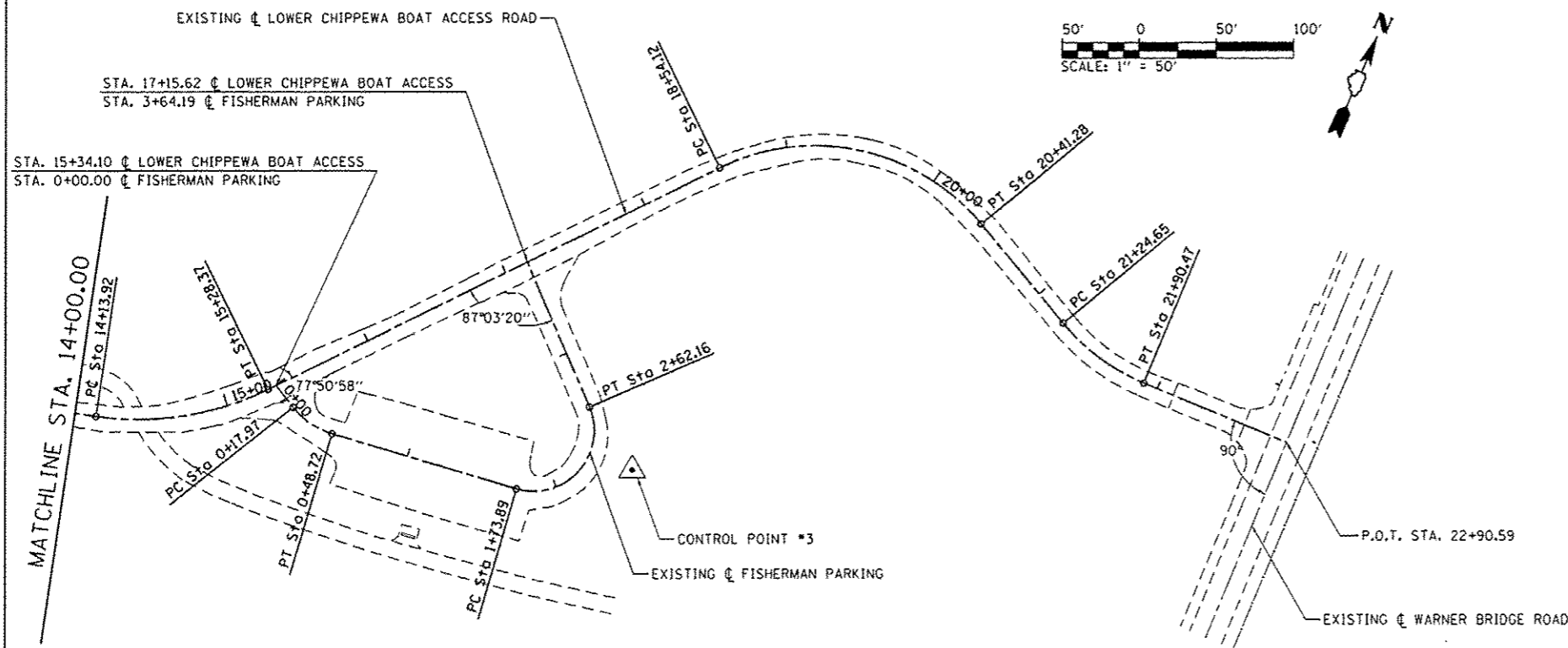


**BILL OF MATERIALS -
LOWER CHIPPEWA BOAT ACCESS ROAD**

ITEM	UNIT	TOTAL
EARTH EXCAVATION	CU YD	161
REMOVAL AND DISPOSAL OF UNSUITABLE MATERIAL	CU YD	475
FURNISHED EXCAVATION	CU YD	5
TRENCH BACKFILL	CU YD	14.9
TOPSOIL FURNISH AND PLACE, 4"	SO YD	1,594
GRADING AND SHAPING DITCHES	FOOT	2,062
STONE RIPRAP, CLASS A3	SO YD	45
FILTER FABRIC	SO YD	45
AGGREGATE BASE COURSE, TYPE A	TON	15.0
AGGREGATE BASE COURSE, TYPE A 2"	SO YD	5,821
AGGREGATE BASE COURSE, TYPE A 6"	SO YD	76
AGGREGATE BASE COURSE, TYPE A 12"	SO YD	137
AGGREGATE BASE COURSE, TYPE B	TON	975.0
LEVELING BINDER (MACHINE METHOD), N50	TON	2.7
HOT-MIX ASPHALT SURFACE REMOVAL - BUTT JOINT	SO YD	46
HOT-MIX ASPHALT BINDER COURSE, IL 19.0, N50	TON	782.9
HOT-MIX ASPHALT SURFACE COURSE, MIX "C", N50	TON	600.1
PAVEMENT REMOVAL	SO YD	199
AGGREGATE WEDGE SHOULDER, TYPE B	TON	159.3
PIPE CULVERT REMOVAL	FOOT	86
PIPE CULVERTS, CLASS D, TYPE 1 12"	FOOT	198
END SECTIONS 12"	EACH	10
SIGN PANEL - TYPE 1	SO FT	29
WOOD SIGN SUPPORT	FOOT	105
PAINT PAVEMENT MARKING - LINE 4"	FOOT	922
PAINT PAVEMENT MARKING - LINE 24"	FOOT	12
REMOVE EXISTING GATE	EACH	1
REMOVE EXISTING PARKING BLOCKS	EACH	89
PRECAST CONCRETE PARKING BLOCK	EACH	36
TUBULAR STEEL GATE	EACH	1
SCARIFY EXISTING SURFACE	SO YD	5,912
FOLD DOWN BOLLARDS	EACH	1
BOLLARD REMOVAL	EACH	1
PIPE CULVERTS TO BE CLEANED 15"	FOOT	41
PIPE CULVERTS TO BE CLEANED 18"	FOOT	59
REMOVE SIGN COMPLETE	EACH	6
CONCRETE REMOVAL (SPECIAL)	SO YD	2
BITUMINOUS MATERIALS (PRIME COAT)	POUND	14,967

* FULL-DEPTH BASE REPAIR QUANTITIES ARE ESTIMATED AND SHALL BE USED ONLY AT THE DISCRETION OF THE ENGINEER



FILE NAME : L:\1001\106610\1510\04\CA00_Sheets\46251-shk-Lower-Chippewa-881\Alignment.dgn	USER NAME : Brad Downen	DESIGNED - MJ0	REVISED -
		DRAWN - RAH	REVISED -
		CHECKED - BJD	REVISED -
		DATE - 3/29/2013	REVISED -

**STATE OF ILLINOIS
DEPARTMENT OF TRANSPORTATION**

**ALIGNMENT AND BILL OF MATERIALS
LOWER CHIPPEWA BOAT ACCESS ROAD
KANKAKEE RIVER STATE PARK**

SCALE: 1" = 50' SHEET 1 OF 7 SHEETS STA. TO STA.

F.A. RTE.	SECTION	COUNTY	TOTAL SHEETS	SHEET NO.
	PARK ROADS		140	37
* WILL & KANKAKEE			CONTRACT NO. 46251	
ILLINOIS FED. AID PROJECT				