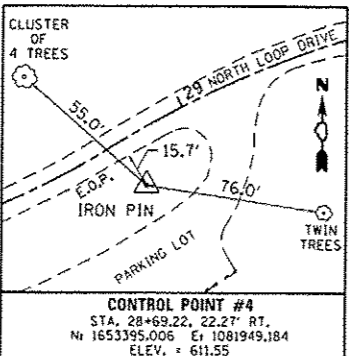
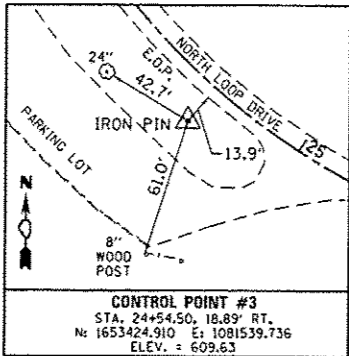
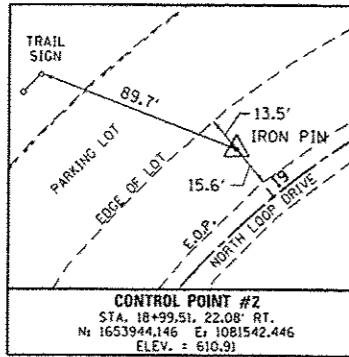
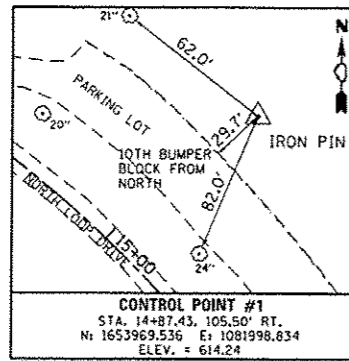


CONTROL POINTS



CURVE DATA

EXIST. ϕ NORTH LOOP
 CURVE-1 DATA
 PI STA. = 4+40.41
 $\Delta = 67^\circ 25' 22''$ (LT)
 D = 14° 41' 28"
 R = 390.00'
 T = 260.21'
 L = 458.93'
 E = 78.84'
 P.C. STA. = 1+80.20
 P.T. STA. = 6+39.13

EXIST. ϕ NORTH LOOP
 CURVE-2 DATA
 PI STA. = 8+12.42
 $\Delta = 28^\circ 52' 30''$ (RT)
 D = 15° 41' 51"
 R = 365.00'
 T = 93.97'
 L = 183.95'
 E = 11.90'
 P.C. STA. = 7+18.45
 P.C.C. STA. = 9+02.40

EXIST. ϕ NORTH LOOP
 CURVE-3 DATA
 PI STA. = 9+75.39
 $\Delta = 13^\circ 19' 25''$ (RT)
 D = 9° 10' 02"
 R = 625.00'
 T = 73.00'
 L = 145.34'
 E = 4.25'
 P.C.C. STA. = 9+02.40
 P.R.C. STA. = 10+47.73

EXIST. ϕ NORTH LOOP
 CURVE-4 DATA
 PI STA. = 12+28.54
 $\Delta = 40^\circ 53' 24''$ (LT)
 D = 11° 48' 49"
 R = 485.00'
 T = 180.80'
 L = 346.13'
 E = 32.61'
 P.R.C. STA. = 10+47.73
 P.C.C. STA. = 13+93.86

EXIST. ϕ NORTH LOOP
 CURVE-5 DATA
 PI STA. = 14+86.65
 $\Delta = 15^\circ 32' 27''$ (LT)
 D = 8° 25' 33"
 R = 690.00'
 T = 92.79'
 L = 184.44'
 E = 6.30'
 P.C.C. STA. = 13+93.86
 P.C.C. STA. = 15+78.30

EXIST. ϕ NORTH LOOP
 CURVE-6 DATA
 PI STA. = 16+11.07
 $\Delta = 23^\circ 08' 53''$ (LT)
 D = 35° 48' 36"
 R = 160.00'
 T = 32.77'
 L = 64.64'
 E = 3.32'
 P.C.C. STA. = 15+78.30
 P.C.C. STA. = 16+42.94

EXIST. ϕ NORTH LOOP
 CURVE-7 DATA
 PI STA. = 17+21.95
 $\Delta = 30^\circ 59' 24''$ (LT)
 D = 20° 06' 14"
 R = 285.00'
 T = 79.01'
 L = 154.15'
 E = 10.75'
 P.C.C. STA. = 16+42.94
 P.C.C. STA. = 17+97.09

EXIST. ϕ NORTH LOOP
 CURVE-8 DATA
 PI STA. = 18+43.20
 $\Delta = 20^\circ 29' 49''$ (LT)
 D = 22° 28' 08"
 R = 255.00'
 T = 46.10'
 L = 91.22'
 E = 4.13'
 P.C.C. STA. = 17+97.09
 P.C.C. STA. = 18+88.32

EXIST. ϕ NORTH LOOP
 CURVE-9 DATA
 PI STA. = 83+42.00
 $\Delta = 174^\circ 19' 22''$ (LT)
 D = 17° 54' 18"
 R = 320.00'
 T = 6,453.68'
 L = 973.60'
 E = 6,141.61'
 P.C.C. STA. = 18+88.32
 P.R.C. STA. = 28+61.92

EXIST. ϕ NORTH LOOP
 CURVE-10 DATA
 PI STA. = 29+17.28
 $\Delta = 14^\circ 01' 41''$ (RT)
 D = 12° 43' 57"
 R = 450.00'
 T = 55.36'
 L = 110.18'
 E = 3.39'
 P.R.C. STA. = 28+61.92
 P.C.C. STA. = 29+72.09

EXIST. ϕ NORTH LOOP
 CURVE-11 DATA
 PI STA. = 30+00.30
 $\Delta = 23^\circ 36' 15''$ (RT)
 D = 42° 26' 29"
 R = 135.00'
 T = 28.21'
 L = 55.62'
 E = 2.92'
 P.C.C. STA. = 29+72.09
 P.T. STA. = 30+27.71

COORDINATE DATA

P.O.T. STA. 0+00.00
 N. : 1652539.001
 E. : 1082173.964

P.C. STA. 1+80.20
 N. : 1652697.354
 E. : 1082259.962

P.I. STA. 4+40.41
 N. : 1652926.019
 E. : 1082384.145

P.T. STA. 6+39.13
 N. : 1653128.476
 E. : 1082220.682

P.C. STA. 7+18.45
 N. : 1653190.189
 E. : 1082170.855

P.I. STA. 8+12.42
 N. : 1653263.304
 E. : 1082111.822

P.C.C. STA. 9+02.40
 N. : 1653355.835
 E. : 1082095.436

P.I. STA. 9+75.39
 N. : 1653427.714
 E. : 1082082.707

P.R.C. STA. 10+47.73
 N. : 1653500.593
 E. : 1082086.885

P.I. STA. 12+28.54
 N. : 1653681.100
 E. : 1082097.234

P.C.C. STA. 13+93.86
 N. : 1653824.332
 E. : 1081986.896

P.I. STA. 14+86.65
 N. : 1653897.841
 E. : 1081930.269

P.C.C. STA. 15+78.30
 N. : 1653953.490
 E. : 1081856.017

P.I. STA. 16+11.07
 N. : 1653973.142
 E. : 1081829.796

P.C.C. STA. 16+42.94
 N. : 1653980.903
 E. : 1081797.961

P.I. STA. 17+21.96
 N. : 1653999.619
 E. : 1081721.199

P.C.C. STA. 17+97.09
 N. : 1653976.140
 E. : 1081645.758

P.I. STA. 18+43.20
 N. : 1653934.191
 E. : 1081601.736

P.C.C. STA. 18+88.32
 N. : 1653934.191
 E. : 1081565.299

P.I. STA. 83+42.00
 N. : 1649980.061
 E. : 1076464.824

P.R.C. STA. 28+61.92
 N. : 1653410.231
 E. : 1081931.443

P.I. STA. 29+17.28
 N. : 1653439.658
 E. : 1081978.340

P.C.C. STA. 29+72.09
 N. : 1653456.839
 E. : 1082030.971

P.I. STA. 30+00.30
 N. : 1653465.593
 E. : 1082057.786

P.O.T. STA. 30+27.71
 N. : 1653462.877
 E. : 1082085.864

FILE NAME : L:\1001\1186618\10.15\Draw\CAD00_Sheets\046251-sh1-NorthLoop-082\Alignment.dgn	USER NAME : Brad Downen	DESIGNED - MJO	REVISED -	STATE OF ILLINOIS DEPARTMENT OF TRANSPORTATION	ALIGNMENT - NORTH LOOP KANKAKEE RIVER STATE PARK		P.A. RTE.	SECTION	COUNTY	TOTAL SHEETS	SHEET NO.	
Default	PLT SCALE : 100.0000' / in	CHECKED - BJD	REVISED -		SCALE: N.T.S.	SHEET 2 OF 5 SHEETS	STA.	TO STA.	PARK ROADS	*	140	74
	PLT DATE : 4/6/2013	DATE - 3/29/2013	REVISED -						* WILL & KANKAKEE			CONTRACT NO. 46251
												ILLINOIS FED. AID PROJECT