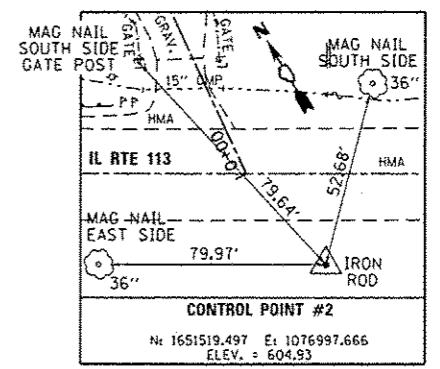
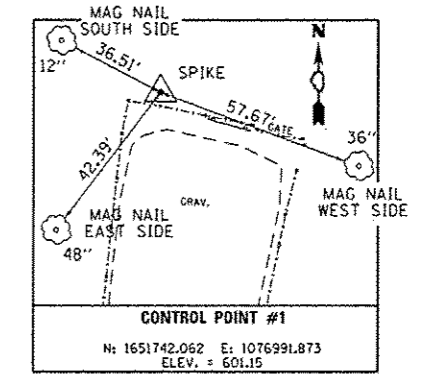
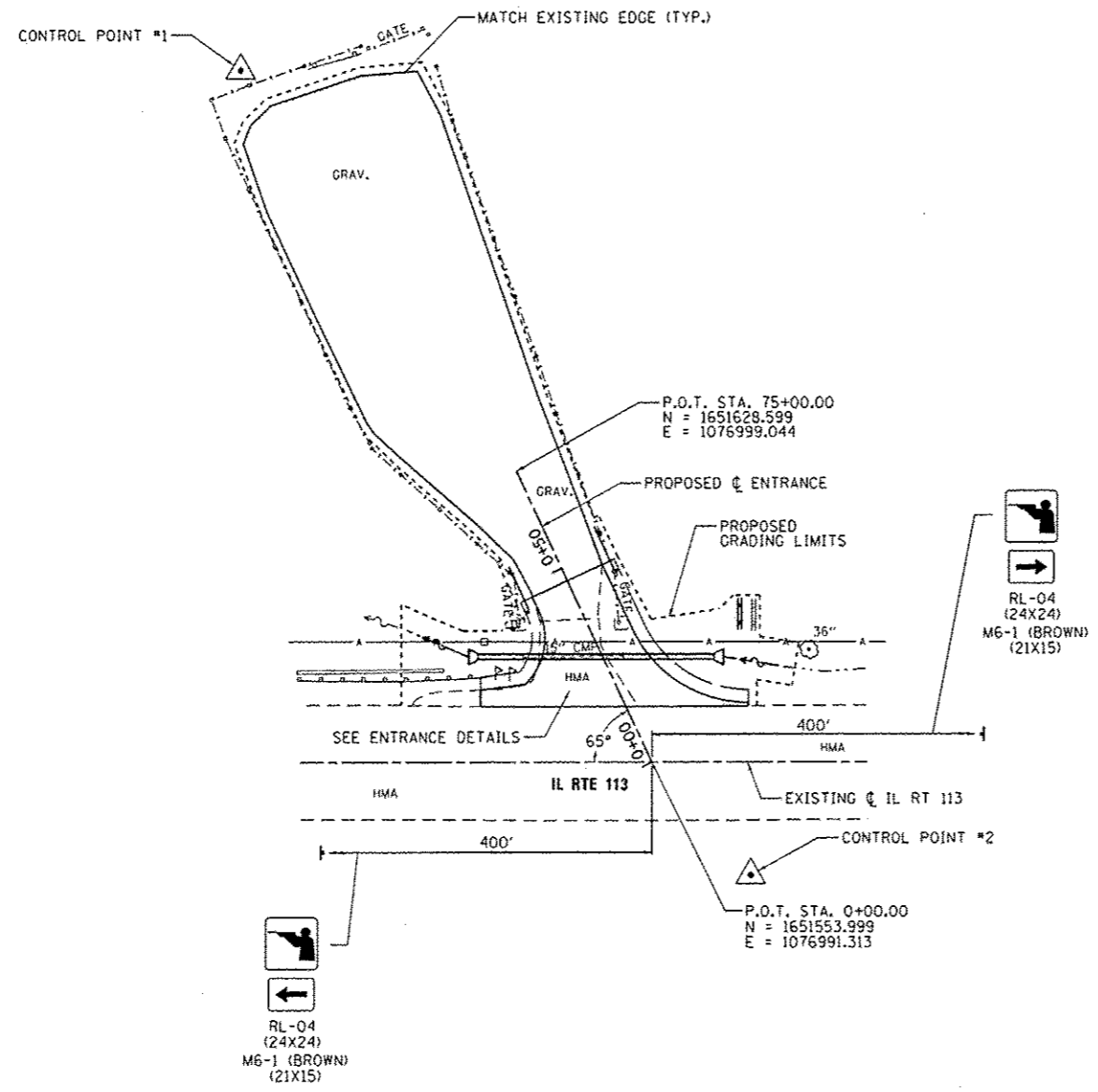
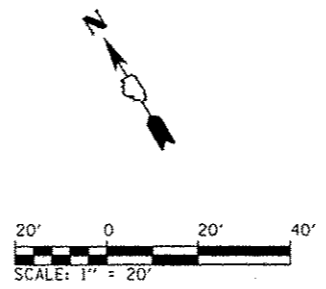


BILL OF MATERIALS - AREA 3

ITEM	UNIT	TOTAL
TREE REMOVAL (OVER 15 UNITS DIAMETER)	UNIT	36
EARTH EXCAVATION	CU YD	36
FURNISHED EXCAVATION	CU YD	12
TRENCH BACKFILL	CU YD	3.4
TOPSOIL FURNISH AND PLACE, 4"	SQ YD	56
GRADING AND SHAPING DITCHES	FOOT	30
AGGREGATE BASE COURSE, TYPE A 12"	SQ YD	103
PREPARATION OF BASE	SQ YD	523
AGGREGATE SURFACE COURSE, TYPE A 4"	SQ YD	567
HOT-MIX ASPHALT BINDER COURSE, IL 19.0, N50	TON	23.4
HOT-MIX ASPHALT SURFACE COURSE, MIX "C", N50	TON	9.6
PAVEMENT REMOVAL	SQ YD	47
AGGREGATE WEDGE SHOULDER, TYPE B	TON	13.2
PIPE CULVERT REMOVAL	FOOT	24
PIPE CULVERTS, CLASS D, TYPE 1 15"	FOOT	56
END SECTIONS 15"	EACH	2
SIGN PANEL - TYPE 1	SQ FT	19
WOOD SIGN SUPPORT	FOOT	74
PAINT PAVEMENT MARKING - LINE 24"	FOOT	10
REMOVE EXISTING GATE	EACH	1
TUBULAR STEEL GATE	EACH	1
SIGN PANEL - TYPE 1 (SPECIAL)	SQ FT	12
REMOVE SIGN COMPLETE	EACH	1
BITUMINOUS MATERIALS (PRIME COAT)	POUND	243



FILE NAME: L:\1001\1106610\W0.15\0-a\CADD_Sheets\046251-shc-Area3-R01SitePlan.dgn	USER NAME: Brad Downen	DESIGNED: MJJ	REVISED: -	STATE OF ILLINOIS DEPARTMENT OF TRANSPORTATION	SITE PLAN - AREA 3 KANKAKEE RIVER STATE PARK		F.A. RTE.	SECTION	COUNTY	TOTAL SHEETS	SHEET NO.	
Default	PLOT SCALE: 48.0000' / in.	CHECKED: BJD	REVISED: -		SCALE: 1" = 20'	SHEET 1 OF 2 SHEETS	STA.	TO STA.	WILL & KANKAKEE	140	99	
	PLOT DATE: 4/6/2013	DATE: 3/29/2013	REVISED: -		CONTRACT NO. 46251							
					ILLINOIS FED. AID PROJECT							