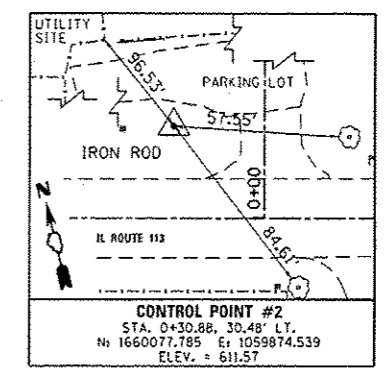
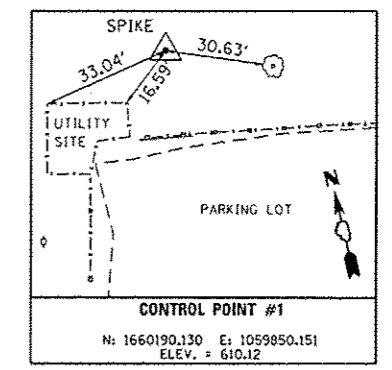
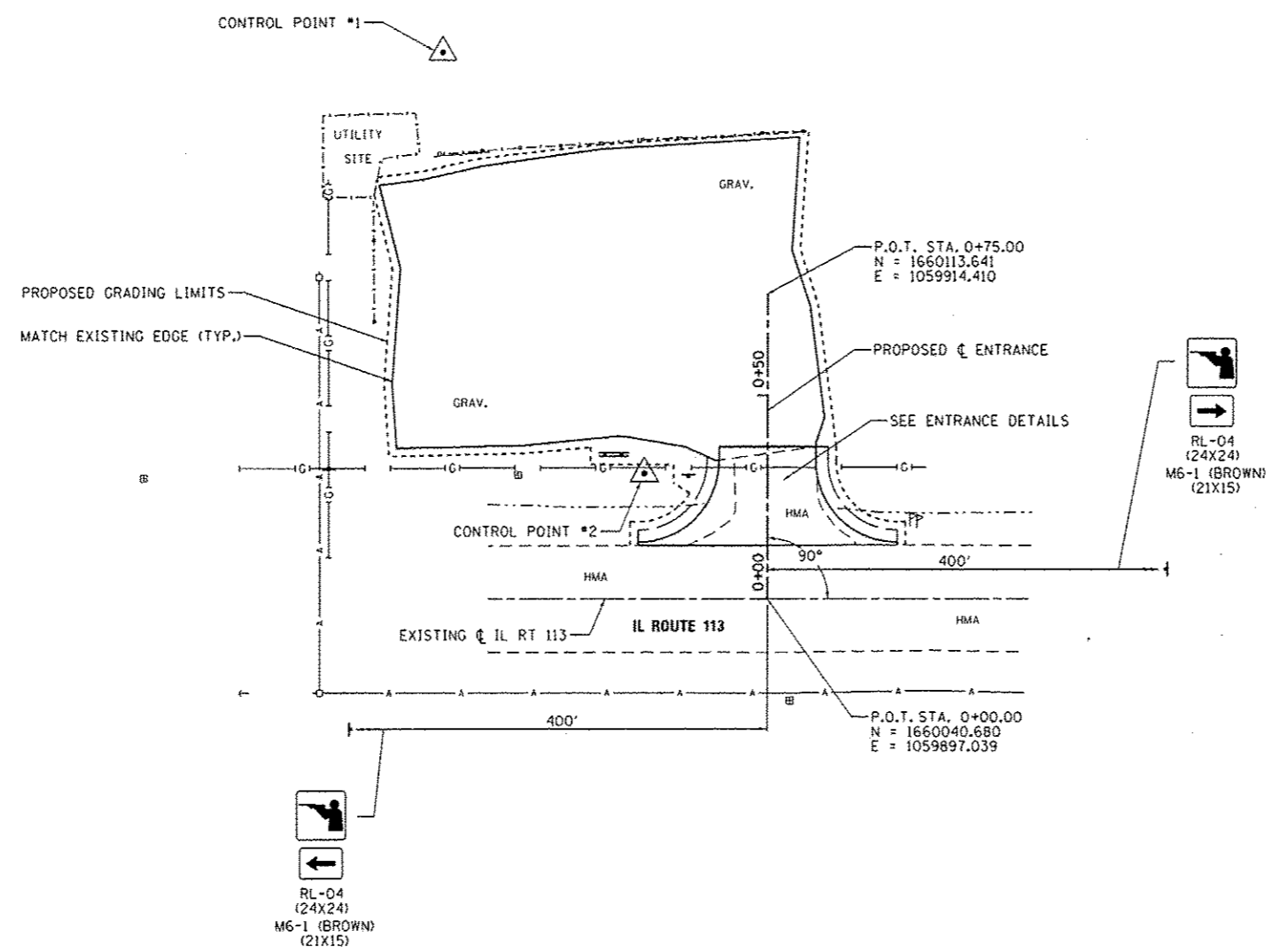
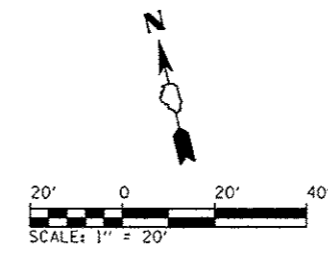


**BILL OF MATERIALS - AREA 10**

ITEM	UNIT	TOTAL
EARTH EXCAVATION	CU YD	46
FURNISHED EXCAVATION	CU YD	2
TOPSOIL FURNISH AND PLACE, 4"	SQ YD	64
AGGREGATE BASE COURSE, TYPE A 12"	SQ YD	96
PREPARATION OF BASE	SQ YD	812
AGGREGATE SURFACE COURSE, TYPE A 4"	SQ YD	861
HOT-MIX ASPHALT BINDER COURSE, IL 19.0, N50	TON	21.7
HOT-MIX ASPHALT SURFACE COURSE, MIX "C", N50	TON	9.0
PAVEMENT REMOVAL	SQ YD	62
AGGREGATE WEDGE SHOULDER, TYPE B	TON	10.4
SIGN PANEL - TYPE 1	SQ FT	19
WOOD SIGN SUPPORT	FOOT	74
PAINT PAVEMENT MARKING - LINE 24"	FOOT	13
SIGN PANEL - TYPE 1 (SPECIAL)	SQ FT	12
BITUMINOUS MATERIALS (PRIME COAT)	POUND	226



FILE NAME : L:\1001\1186G10\W0.15\Draw\CA00_Sheets\146251-sh1-draw\10-0010-0010-0010-0010.dgn	USER NAME : Brad Downen	DESIGNED - MJJ	REVISED -	<b>STATE OF ILLINOIS DEPARTMENT OF TRANSPORTATION</b>	<b>SITE PLAN - AREA 10 KANKAKEE RIVER STATE PARK</b>		F.A. RTE.	SECTION	COUNTY	TOTAL SHEETS	SHEET NO.	
Default	PLOT SCALE = 48,0000' / in.	DRAWN - RAH	REVISED -		SCALE: 1" = 20'	SHEET 1 OF 2 SHEETS	STA.	TO STA.	PARK ROADS	*	140	122
	PLOT DATE = 4/6/2013	CHECKED - BJD	REVISED -						* WILL & KANKAKEE			
		DATE - 3/29/2013	REVISED -						CONTRACT NO. 46251			