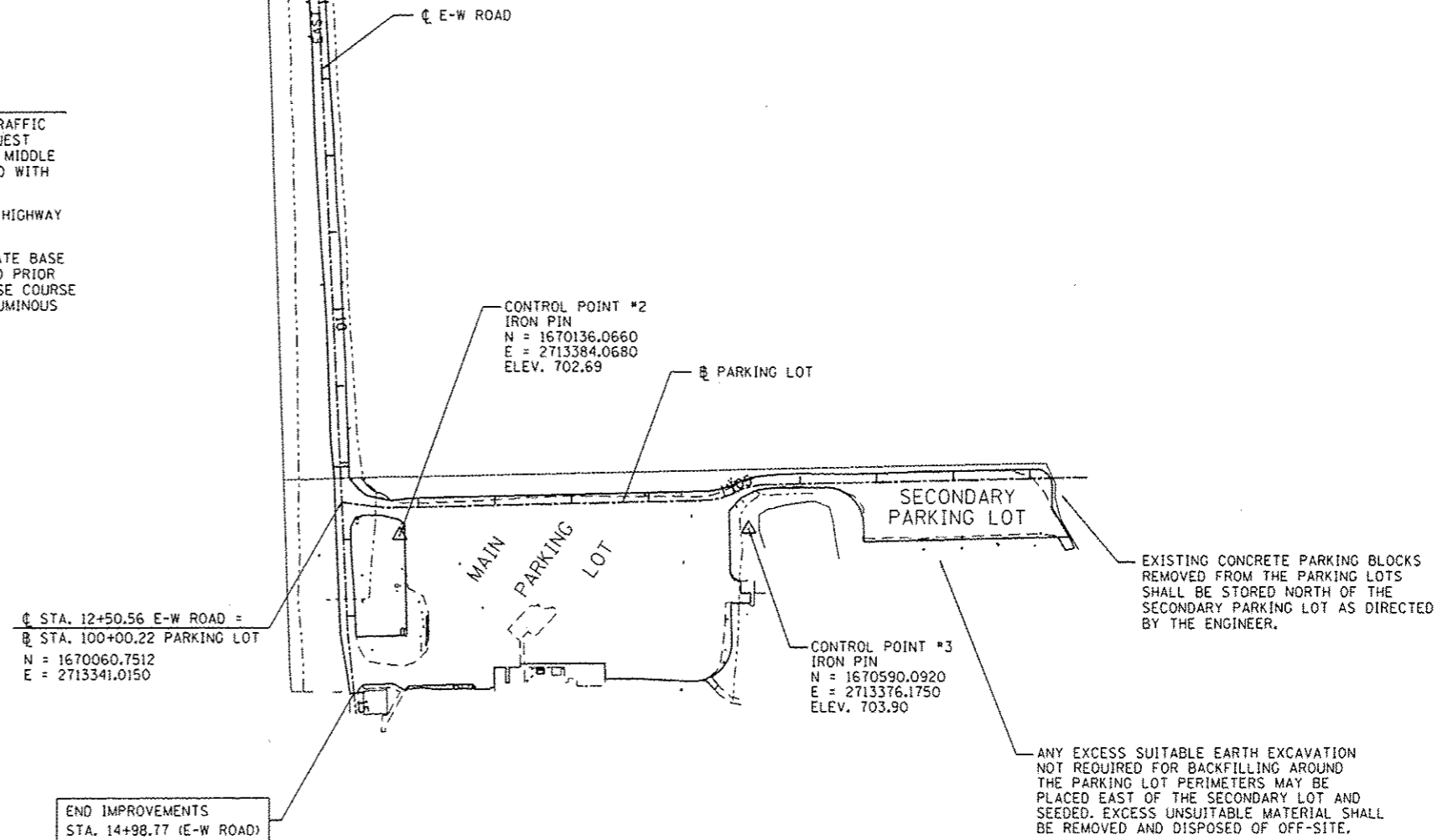


BENCHMARK LOCATIONS

- BM 1
CHISELED "O" ON THE TOP AND CENTER OF THE OLD BOAT RAMP OR THE SOUTH RAMP.
ELEV. 701.87
- BM 2
CHISELED "X" ON THE NORTHWEST BOLT OF THE NORTHEAST RAILROAD CROSSING SIGNAL LOCATED WEST OF LASALLE LAKE ENTRANCE ROAD.
ELEV. 709.73

CONSTRUCTION SEQUENCE AND TRAFFIC CONTROL

1. IT IS ANTICIPATED THAT THE MAJORITY OF THE WORK SHALL BE COMPLETED UNDER TRAFFIC WHILE MAINTAINING ACCESS TO LASALLE LAKE FACILITIES. THE CONTRACTOR MAY REQUEST A ONE TO TWO WEEK FULL CLOSURE OF THE PARK SITE BETWEEN LATE JUNE AND THE MIDDLE OF AUGUST FOR FINAL GRADING AND PAVING OPERATIONS. THIS SHALL BE COORDINATED WITH IDOT & IDNR AT LEAST THREE WEEKS IN ADVANCE OF ANY CLOSURE.
2. TRAFFIC CONTROL SHALL BE PROVIDED AT ALL TIMES IN ACCORDANCE WITH THE IDOT HIGHWAY STANDARDS, THE STANDARD SPECIFICATIONS AND THE CONTRACT SPECIAL PROVISIONS.
3. THE EXISTING AGGREGATE SURFACE SHALL BE PREPARED AND THE ADDITIONAL AGGREGATE BASE COURSE FURNISHED AND PLACED ON THE NORTH-SOUTH AND EAST-WEST ENTRANCE ROAD PRIOR TO COMPLETING WORK ON THE PARKING LOTS TO ALLOW TIME FOR THE AGGREGATE BASE COURSE TO DRY AND BE COMPACTED BY CONSTRUCTION TRAFFIC PRIOR TO RECEIVING THE BITUMINOUS SURFACE TREATMENT.



FILE NAME =	USER NAME = Matt Overbay	DESIGNED - MJO	REVISED -	STATE OF ILLINOIS DEPARTMENT OF TRANSPORTATION	SITE PLAN IDNR LASALLE LAKE STATE FISH & WILDLIFE AREA			F.A. RTE.	SECTION	COUNTY	TOTAL SHEETS	SHEET NO.
L:\IDOT\1106610\WD_9\0-e\1\CAD00_Sheets\06_SITE PLAN.dgn		DRAWN - GLD	REVISED -		N/A	PARKS ROADS	LASALLE	20	6			
Default	PLOT SCALE = 200.0000' / in.	CHECKED - SPH	REVISED -		SCALE: 1" = 200'			SHEET 1 OF 1 SHEETS STA. TO STA.			CONTRACT NO. 46254	
	PLOT DATE = 2/11/2013	DATE - 2/8/2013	REVISED -		ILLINOIS FED. AID PROJECT							